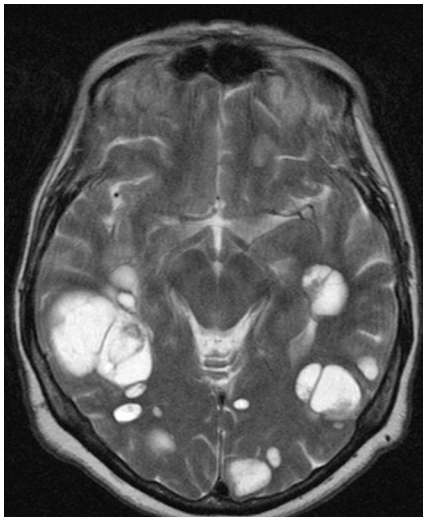


# MINERVA

Arseny A Sokolov *resident internal medicine*<sup>1</sup>, Holger Hetterich *resident radiology*<sup>2</sup>, Maximilian Reiser *department head of radiology*<sup>2</sup>, Martin Reincke *department head of internal medicine*,<sup>1</sup>

<sup>1</sup>Medizinische Klinik und Poliklinik IV, Campus Innenstadt, Ludwig Maximilians University Hospital, Munich, Germany; <sup>2</sup>Institute for Clinical Radiology, Ludwig Maximilians University Hospital



her brain showed multiple cystic lesions affecting both hemispheres and the cerebellum. Given her history of breast cancer, brain metastases was the most likely diagnosis. However, neurocysticercosis is another cause of multiple cystic lesions. Stereotactic biopsy confirmed the diagnosis of invasive ductal breast carcinoma metastases, and combined radio-chemotherapy was started. Breast and lung adenocarcinoma and melanoma are the commonest primary tumours causing cystic brain metastases.

Patient consent obtained.

Cite this as: *BMJ* 2012;345:e7052

© BMJ Publishing Group Ltd 2012

A 67 year old woman presented with a severe panic attack and progressively depressed mood. Magnetic resonance imaging of