



# Comorbidities may offset expected improved survival after transcatheter aortic valve replacement

Pierre Lantelme <sup>1,2,\*</sup>, Matthieu Aubry <sup>1,2</sup>, Jacques Chan Peng<sup>3</sup>, Benjamin Riche<sup>4,5</sup>, Géraud Souteyrand<sup>6</sup>, Philippe Jaafar<sup>3</sup>, Muriel Rabilloud<sup>4,5</sup>, Brahim Harbaoui <sup>1,2</sup>, Olivier Muller <sup>7</sup>, Benoit Cosset<sup>8</sup>, Mattia Pagnoni<sup>7</sup>, and Thibaut Manigold<sup>3</sup>

<sup>1</sup>Service de Cardiologie, Hôpital de la Croix-Rousse et Hôpital Lyon Sud, Hospices Civils de Lyon, 103 Grande Rue de la Croix-Rousse, 69004 Lyon, France; <sup>2</sup>CREATIS UMR5220, INSERM U1044, INSA-15, Université de Lyon, Lyon, France; <sup>3</sup>Département de cardiologie, Centre Hospitalo-Universitaire de Nantes, Nantes, France; <sup>4</sup>Centre National de la Recherche Scientifique, UMR 5558, Laboratoire de Biométrie et Biologie Évolutive, Équipe Biostatistique-Santé, Université Lyon 1, Villeurbanne, France; <sup>5</sup>Hospices Civils de Lyon, Pôle Santé Publique, Service de Biostatistique-Bioinformatique, Lyon, France; <sup>6</sup>Département de cardiologie, Centre Hospitalo-Universitaire Gabriel Montpied, Image Science for Interventional Techniques, Cardiovascular Interventional Therapy and Imaging, Centre National de la Recherche Scientifique UMR 6284, Université d'Auvergne, Clermont-Ferrand, France; <sup>7</sup>Département de cardiologie, Centre Hospitalier Universitaire Vaudois, Lausanne, Switzerland; and <sup>8</sup>Department of Cardiac Surgery, Hôpital Louis Pradel, Hospices Civils de Lyon, Lyon, France

Received 19 November 2021; revised 12 March 2022; online publish-ahead-of-print 16 April 2022

Handling Editor: Patrizio Lancellotti

## Aims

After transcatheter aortic valve replacement (TAVR), cardiovascular and non-cardiovascular comorbidities may offset the survival benefit from the procedure. We aimed to describe the relationships between that benefit and patient comorbidities.

## Methods and results

The study pooled two European cohorts of patients with severe aortic stenosis (AS-pooled): one with patients who underwent (cohort of AS patients treated by TAVR,  $N = 233$ ) and another with patients who did not undergo TAVR (cohort of AS patients treated medically;  $N = 291$ ). The investigators collected the following: calcification prognostic impact (CAPRI) and Charlson scores for cardiovascular and non-cardiovascular comorbidities, activities of daily living (ADL)/instrumental activities of daily living (IADL) scores for frailty as well as routine Society of Thoracic Surgeons (STS) score and Logistic Euroscore. Unlike ADL/IADL scores, CAPRI and Charlson scores were found to be independent predictors of 1-year all-cause death in the AS-pooled cohort, with and without adjustment for STS score or Logistic Euroscore; they were thus retained to define a three-level prognostic scale (good, intermediate, and poor). The survival benefit from TAVR—vs. no TAVR—was stratified according to these three prognosis categories. The beneficial effect of TAVR on 1-year all-cause death was significant in patients with good and intermediate prognosis, hazard ratio (95% confidence interval): 0.36 (0.18; 0.72) and 0.32 (0.15; 0.67). That effect was reduced and not statistically significant in patient with poor prognosis [0.65 (0.22; 1.88)].

## Conclusion

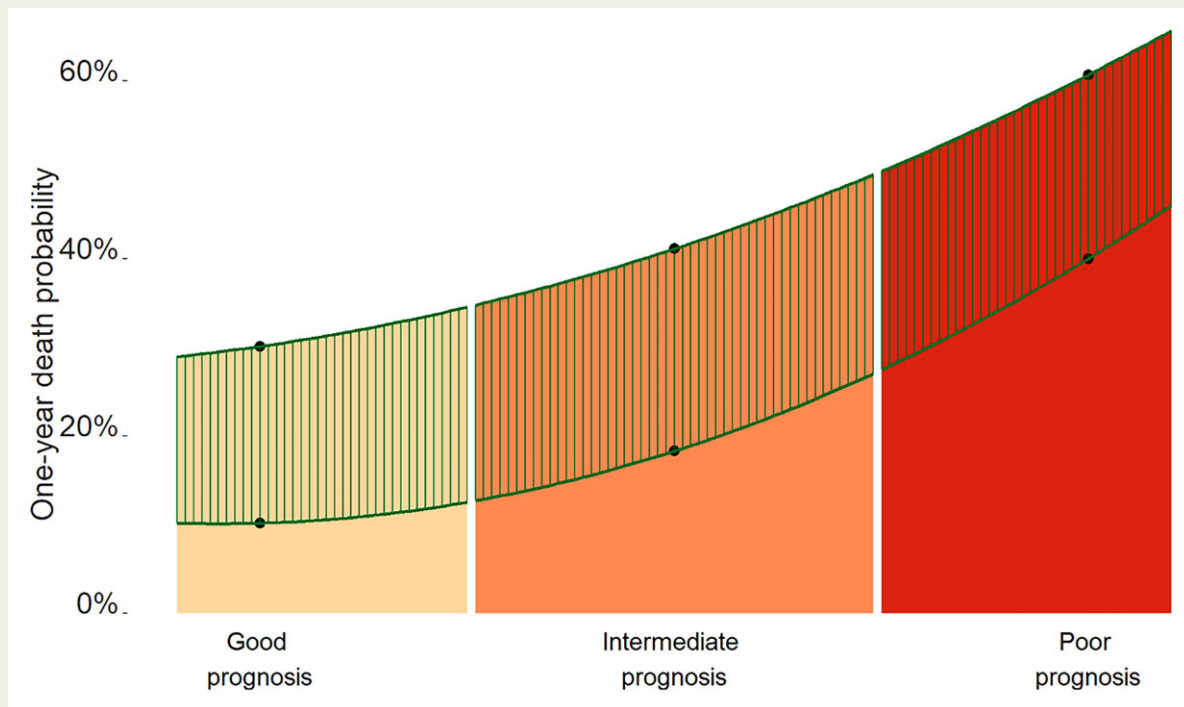
The study showed that, beyond a given comorbidity burden (as assessed by CAPRI and Charlson scores), the probability of death within a year was high and poorly reduced by TAVR. This indicates the futility of TAVR in patients in the poor prognosis category.

\* Corresponding author. Tel: +33 472 071 667, Fax: +33 472 071 674, Email: [pierre.lantelme@chu-lyon.fr](mailto:pierre.lantelme@chu-lyon.fr)

© The Author(s) 2022. Published by Oxford University Press on behalf of the European Society of Cardiology.

This is an Open Access article distributed under the terms of the Creative Commons Attribution-NonCommercial License (<https://creativecommons.org/licenses/by-nc/4.0/>), which permits non-commercial re-use, distribution, and reproduction in any medium, provided the original work is properly cited. For commercial re-use, please contact [journals.permissions@oup.com](mailto:journals.permissions@oup.com)

## Graphical Abstract



Relationship between prognosis category and the transcatheter aortic valve replacement (TAVR) effect. Prognosis categories were defined using the tertiles of calcification prognostic impact and Charlson scores. The estimates of 1-year all-cause death probabilities in each cohort (cohort of AS patients treated medically and cohort of AS patients treated by TAVR) were obtained using a multivariable Cox regression model. The mortality curves were obtained using an interpolated polynomial of degree 2 based on those estimates. The hatched area indicates the difference in the probability of 1-year death between the two cohorts and illustrates mainly the TAVR effect. While both TAVR and the prognosis category contributed to 1-year all-cause death, the contribution of TAVR was not uniform across the range of prognoses; the poorer was the prognosis category, the lower was the benefit from TAVR.

### Keywords

Transcatheter aortic valve replacement • Mortality • Comorbidities • Medical futility • Organ dysfunction scores

## Introduction

Transcatheter aortic valve replacement (TAVR) is undoubtedly able to change the course of aortic stenosis (AS) disease.<sup>1</sup> However, in highly comorbid patients often seen in this setting, solving the valvular problem may not achieve a meaningful improvement in terms of survival. In such patients, TAVR might be deemed 'futile'.

Futility is a complex issue that encompasses ethical, economical, and technical facets. In the context of TAVR, futility was defined as death within the first year post-TAVR<sup>2</sup> and would concern up to 20% of patients.<sup>3</sup> To date, it cannot be easily assessed with surgical risk scores<sup>4,5</sup> but would rather rely on the more common notion of 'comorbidity burden'. Thus, one way of evaluating futility would be to define a comorbidity burden threshold above which the benefit from TAVR would be largely offset by the risk of short-term death. This threshold is currently unknown and has been rarely investigated,<sup>6</sup> but is worth being searched for.

In elderly AS patients, survival is influenced by the valvular disease and its cure (i.e. dependent on TAVR), the residual cardiovascular status (left ventricle ejection fraction—LVEF, pulmonary hypertension, etc.), non-cardiac comorbidities, and frailty. In the TAVR setting, a prognosis based on cardiac and non-cardiac comorbidities may be

approached by dedicated scores such as the calcification prognostic impact (CAPRI),<sup>7</sup> Charlson score,<sup>8</sup> and activities of daily living (ADL)/instrumental activities of daily living (IADL) scores.<sup>9</sup>

The present study aimed to describe the relationships between TAVR benefit, score-assessed comorbidity, and 1-year all-cause death in patients with severe AS.

## Methods

### The study cohorts

The study cohort (AS-pooled) combined two cohorts [cohort of AS patients treated medically (AS-MED) and cohort of AS patients treated by TAVR (AS-TAVR)] of symptomatic patients with severe AS. The latter condition was defined by the usual criteria: aortic surface area  $<1 \text{ cm}^2$  or aortic surface area indexed to body surface area  $<0.6 \text{ cm}^2/\text{m}^2$  or mean aortic gradient  $>40 \text{ mm Hg}$  with normal LVEF. Low-gradient AS patients were not excluded because CAPRI score applies to these patients too.<sup>7</sup>

The AS-MED cohort is a multicentre cohort of 291 consecutive severe AS patients who did not undergo TAVR. They were seen at three French university hospitals (Nantes, Clermont-Ferrand, and

Lyon Croix-Rousse) between January 2013 and August 2018. The decision not to perform TAVR was made by the local heart team on the basis of their analyses of pre-operative work-up and on the patient's will. This study excluded the patients who underwent TAVR within a first year after the initial decision, those scheduled for a TAVR but who deceased before the procedure, and those without or with no assessable computed tomography (CT)-scan (Figure 1).

The AS-TAVR cohort is a single centre cohort of 233 consecutive severe AS patients who underwent TAVR at Lausanne University Hospital between June 2013 and September 2018. Their characteristics were close to those of French patients with TAVR.<sup>10,11</sup>

## The study data

Patient demographic and baseline characteristics were obtained from the medical charts of pre-operative work-up.

The CAPRI score is a TAVR-dedicated score designed to predict mortality 1 year after TAVR or heart failure.<sup>7,12</sup> It includes cardiovascular variables and comorbidities related to the pulmonary status and renal impairment. Its peculiarity is to include thoracic aortic calcification burden as an objective and highly prognostic marker of post-TAVR death.<sup>13–16</sup> For its calculation, pre-operative CTs were collected, anonymized, and transferred to a single core lab as previously described.<sup>7,16</sup> Calcification prognostic impact score was not built with the Swiss data but only with the French Lyon and Clermont-Ferrand data.<sup>7</sup>

The Charlson score, the IADL, and the ADL scores were calculated by a geriatrician as part of usual patient management. The Society of Thoracic Surgeons (STS) score and the Logistic Euroscore were calculated as part of the routine patient work-up. Note here that, in the AS-TAVR cohort, IADL and ADL scores were regularly collected only after 2015 and that the Mini-Mental state (MMS) score was available for the AS-MED cohort only.

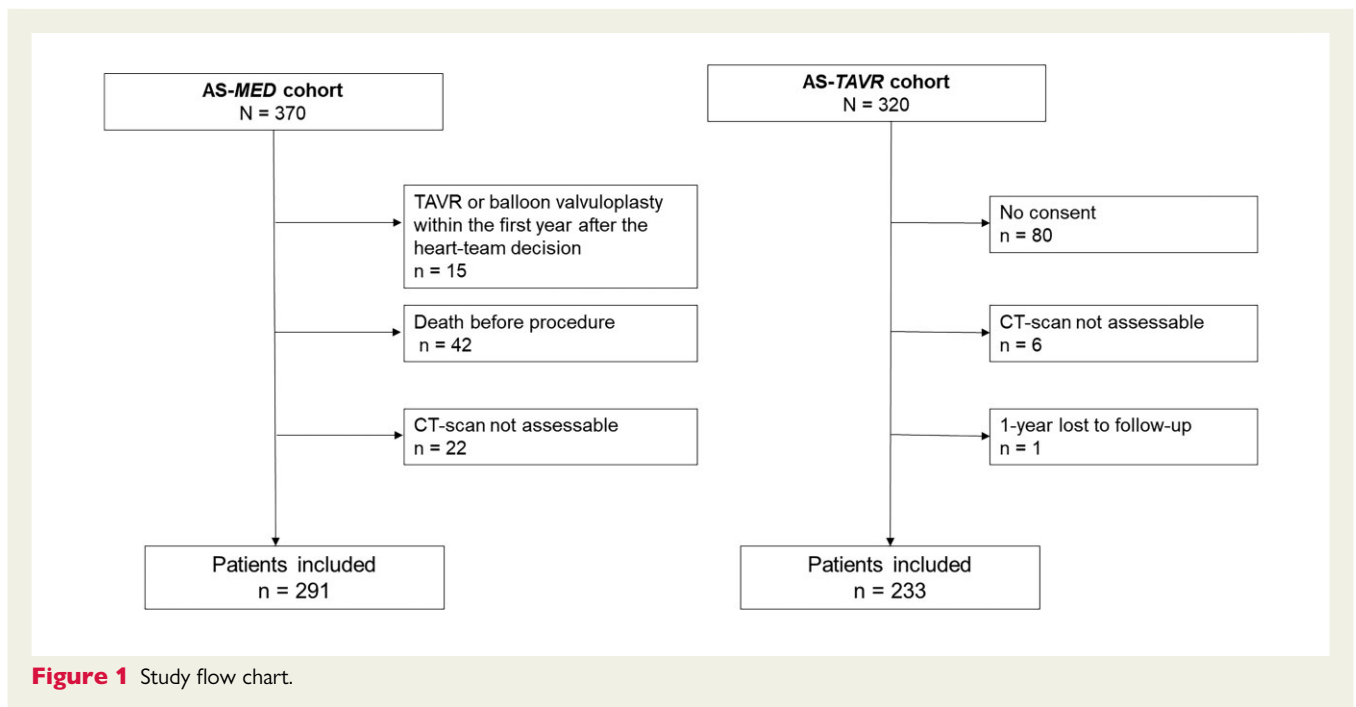
Mortality data were obtained from medical records or by direct phone with the patients' families or referring physicians. The primary outcome was 1-year all-cause death. The follow-up started on the day of the decision not to indicate TAVR in patients treated medically and on the day of the procedure in patients treated by TAVR.

## Data analysis

Patient characteristics were described using the median (interquartile range) or the absolute and relative frequencies, as appropriate. Between-cohort comparisons used Student t-test or Wilcoxon test for continuous variables and  $\chi^2$  test or Fisher exact test for discrete variables (Table 1). Spearman correlations between various scores were calculated to test for multicollinearity and prevent over-adjustment in multivariable models (Figure 2).

Cox models were built with variables TAVR, CAPRI score, Charlson score, and IADL or ADL, with or without adjustments on STS or the Logistic Euroscore, according to the contents of Table 2. Among CAPRI, Charlson, and frailty scores, those found to be independent predictors of 1-year all-cause death were considered to build a three-level prognosis scale as follows: (i) poor prognosis: all scores above the second tertile of their distributions; (ii) intermediate prognosis: one score above the second tertile and the others equal to or below it; (iii) good prognosis: all scores equal to or below the second tertile. 'TAVR effect' was assessed considering the probability of all-cause death in each prognosis category using Kaplan–Meier method and a multivariable Cox model adjusted for the retained prognostic scores.

All statistical analyses were carried out with R statistical software, version 3.5 (R: A language and environment for statistical computing. R Foundation for Statistical Computing, Vienna, Austria. URL <https://www.R-project.org/>).



**Table 1** Baseline characteristics of the two cohorts

	AS-MED cohort		AS-TAVR cohort		P
	Total	Value	Total	Value	
Age	291	85.6 (81.2; 88.8)	233	83.0 (79.0; 87.0)	<0.001
Males	291	124 (42.6)	233	109 (46.8)	0.387
BMI, kg/m <sup>2</sup>	291	25.4 (22.6; 29.2)	233	25.3 (22.5; 29.9)	0.572
NYHA (III/IV)	291	143 (49.1)	233	176 (75.5)	<0.001
Clinical history					
Previous CABG	291	13 (4.5)	233	41 (17.6)	<0.001
Previous PTCA	291	61 (21.0)	233	63 (27.0)	0.128
Peripheral vascular disease	291	73 (25.1)	233	59 (25.3)	1.000
Stroke or TIA	291	35 (12.0)	233	47 (20.2)	0.015
COPD	291	35 (12.0)	233	36 (15.5)	0.313
Diabetes	291	82 (28.2)	233	66 (28.3)	1.000
Atrial fibrillation	291	120 (41.2)	233	93 (39.9)	0.828
Permanent pacemaker	291	41 (14.1)	233	29 (12.4)	0.674
eGFR, mL/min	291	43.0 (33.0; 58.5)	233	43.8 (33.4; 58.4)	0.904
Echocardiographic findings					
Mean gradient, mm Hg	291	45.0 (35.0; 55.0)	233	38.0 (26.0; 50.0)	<0.001
LVEF, %	291	60.0 (45.0; 65.0)	232	60.0 (48.0; 66.2)	0.005
Moderate/severe MR	291	28 (9.6)	232	8 (3.4)	0.009
Pulmonary pressure, mm Hg	221	45.0 (35.0; 55.0)	168	40.0 (32.0; 51.2)	0.056
Diseased coronary vessels	266		233		0.031
None		132 (49.6)		134 (57.5)	
1		63 (23.7)		59 (25.3)	
2		41 (15.4)		29 (12.4)	
3		30 (11.3)		11 (4.7)	
Risk scores					
Logistic Euroscore	291	15.0 (9.2; 23.9)	233	8.9 (5.4; 15.7)	<0.001
STS score	266	4.6 (2.9; 7.3)	231	5.0 (3.4; 8.5)	0.081
CAPRI score	266	0.06(−0.41; 0.55)	231	0.14(−0.31; 0.53)	0.346
Charlson score	291	4 (3; 6)	233	2 (1; 3)	<0.001
ADL score	254	5.5 (4.5; 6.0)	101	6.0 (5.0; 6.0)	0.012
IADL score	241	3 (1; 3)	102	3 (2; 4)	0.021
MMS score	257	25 (20; 28)	—	—	
Patients per period					0.429
2013–2014		65 (22.3)		52 (22.3)	
2015–2016		127 (43.6)		90 (38.6)	
2017–2018		99 (34.0)		91 (39.1)	
Outcome					
1-year all-cause death	291	118 (40.5)	233	32 (13.7)	

Values are median (IQR) or *n* (%). BMI, body mass index; NYHA, New York Heart Association class of heart failure; CABG, coronary artery bypass graft; PTCA, percutaneous transluminal coronary angioplasty; TIA, transient ischaemic attack; COPD, chronic obstructive pulmonary disease; eGFR, estimated glomerular filtration rate (Cockcroft-Gault formula); LVEF, left ventricular ejection fraction; MR, mitral regurgitation; CAPRI, calcification prognostic impact score; ADL, activities of daily living score; IADL, instrumental activities of daily living scores.

## Ethics

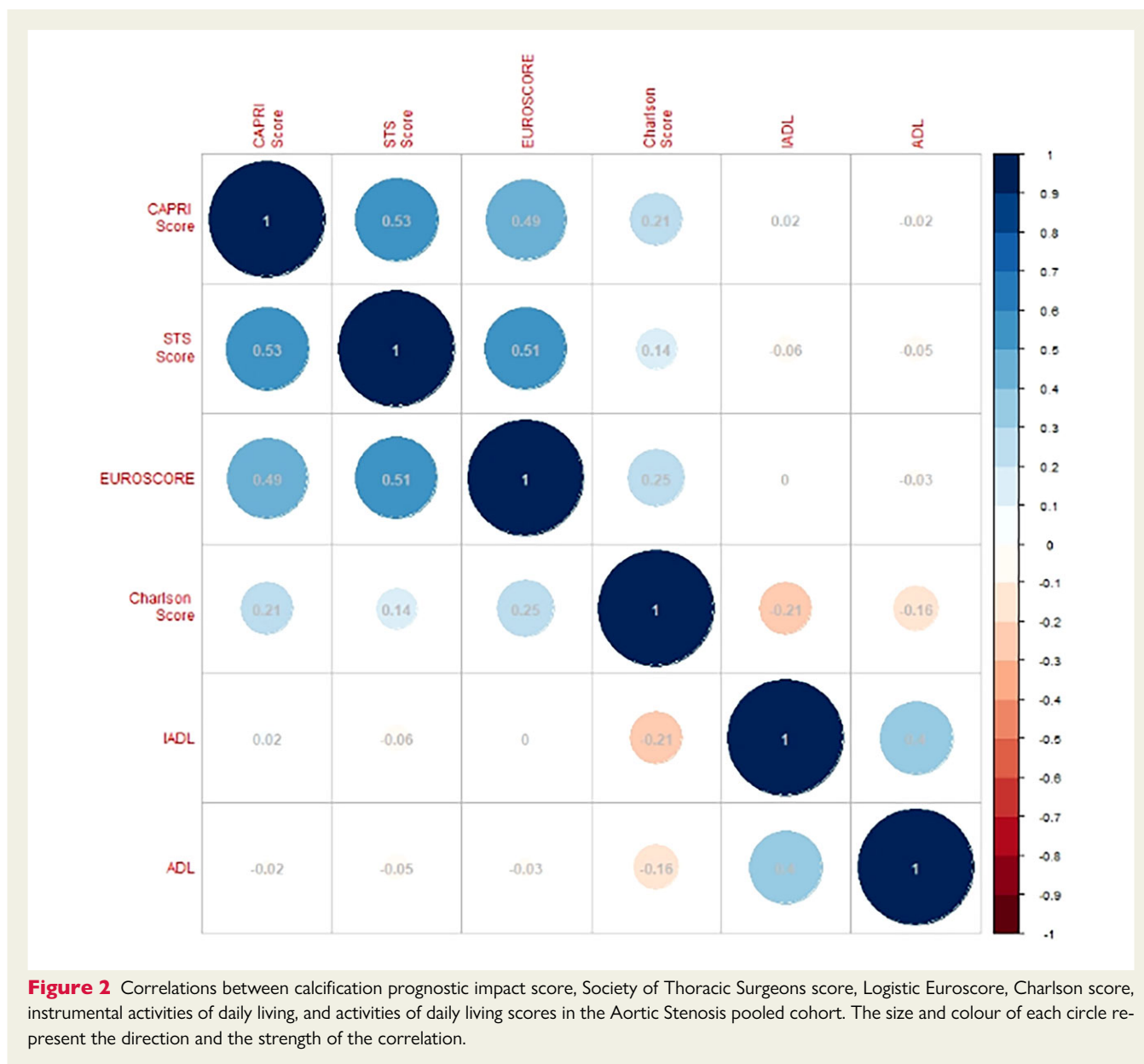
This study was approved by the ethics committee of Nantes University hospital in France (#20190701) and by the ethics committee of Canton de Vaud in Switzerland (#211/13). All patients gave informed consent to participate.

According to the current EU General Data Protection Regulation, subjects' data were anonymized before analysis and all data that

could lead to participants' identification were kept confidential and securely stored.

## Results

The AS-MED cohort comprised 291 patients and the AS-TAVR cohort, 233 patients (see the flow chart in [Figure 1](#)). The most frequent



reasons for not receiving TAVR in the AS-MED cohort were extracardiac comorbidities and/or frailty (66.6%), patient refusal (24.4%), impaired cardiovascular status (19.6%), uncertainty regarding AS severity (18.2%), and unfavourable anatomy (15.8%) (Supplementary material online, Figure 1).

Table 1 shows comparisons between the baseline characteristics of the two cohorts. Versus AS-TAVR patients, AS-MED patients were older, belonged less frequently to NYHA Class III/IV, had less frequently CABG, had higher median mean aortic gradients, and a somewhat higher median pulmonary pressure (Table 1). The median Logistic Euroscore and Charlson score were higher in AS-MED than in AS-TAVR patients. The median ADL and IADL scores were lower in AS-MED than in AS-TAVR patients but the median CAPRI and the median STS scores were similar. Finally, the median (IQR) of the MMS was 25 (20; 28) in the AS-MED cohort (41.6% had scores <24) (nota: no possible comparison with AS-TAVR patients). Regarding mortality, the frequency of 1-year all-cause death was

markedly higher in the AS-MED than in the AS-TAVR cohort (40.5% vs. 13.7%) (Table 1).

In the AS-pooled cohort, there were low correlations between various scores except the correlations between CAPRI, Logistic Euroscore, and STS scores ( $\rho$ : +0.49 to +0.52) and the correlation between IADL and ADL ( $\rho$  = +0.4) (Figure 2).

In the multivariable Cox models that included IADL or ADL, CAPRI and Charlson scores were found to be significant predictors of 1-year all-cause death but neither IADL nor ADL (Table 2). Similar results were obtained after adjustment for the STS score or the Logistic Euroscore (Table 2). Calcification prognostic impact and Charlson scores were retained to build the three-level prognosis scale. Figure 3 shows the distribution of these prognosis categories in the AS-TAVR and in the AS-MED cohorts; patients with poor prognosis formed 4.3% of the AS-TAVR cohort but 21.1% of the AS-MED cohort (Figure 3).

Figure 4 shows that the probability of death increased progressively in AS-MED cohort together with the severity of the prognosis

**Table 2** Hazard ratio (95% confidence interval) for all-cause death in the aortic stenosis pooled cohort (AS-pooled)

Model	TAVR effect	CAPRI score	Charlson score	IADL score	ADL score
1	0.33 (0.18; 0.62)	1.68 (1.24; 2.27)	1.13 (1.01; 1.26)	1.00 (0.86; 1.16)	—
2	0.31 (0.16; 0.59)	1.71 (1.27; 2.32)	1.13 (1.02; 1.25)	—	1.01 (0.89; 1.16)
3	0.29 (0.15; 0.55)	1.47 (1.06; 2.04)	1.13 (1.01; 1.26)	1.01 (0.87; 1.18)	—
4	0.27 (0.14; 0.52)	1.51 (1.09; 2.08)	1.12 (1.02; 1.24)	—	1.03 (0.9; 1.17)
5	0.36 (0.19; 0.69)	1.48 (1.06; 2.07)	1.14 (1.02; 1.26)	0.99 (0.86; 1.15)	—
6	0.34 (0.18; 0.66)	1.50 (1.07; 2.1)	1.14 (1.03; 1.25)	—	1.01 (0.88; 1.15)

CAPRI, calcification prognostic impact score; ADL, activities of daily living score; IADL, instrumental activities of daily living scores. Model 1, with IADL; Model 2, with ADL; Model 3, with IADL adjusted for STS; Model 4, with ADL adjusted for STS score; Model 5, with IADL adjusted for Logistic Euroscore; Model 6, with ADL adjusted for Logistic Euroscore.

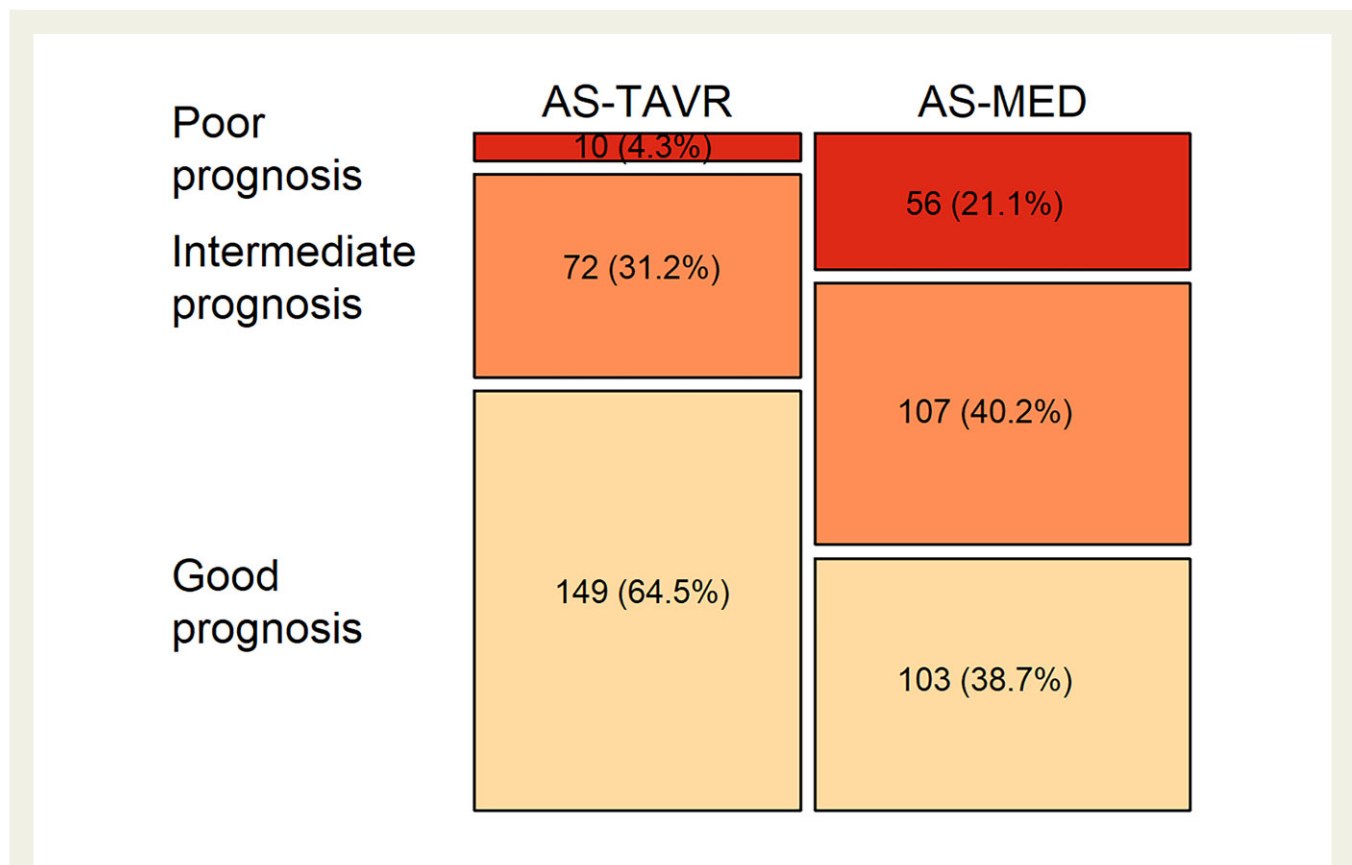
categories and that it was significantly decreased by TAVR ( $p$  log-rank  $< 0.01$ ) in good and intermediate prognosis categories (Figure 3, upper and middle panels) and only mildly decreased in the poor prognosis category. The small number of observations in the poor prognosis category precluded statistical comparisons (Figure 3, lower panel).

In a Cox model, the TAVR effect adjusted for CAPRI and Charlson scores corresponded to a 64% and 68% decrease in the rate of all-cause death in the good and intermediate prognosis categories [HR (95% confidence interval): 0.36 (0.18; 0.72) and 0.32 (0.15; 0.67), respectively] but only 35% (non-significant) decrease in the poor prognosis category [0.65 (0.22; 1.88)].

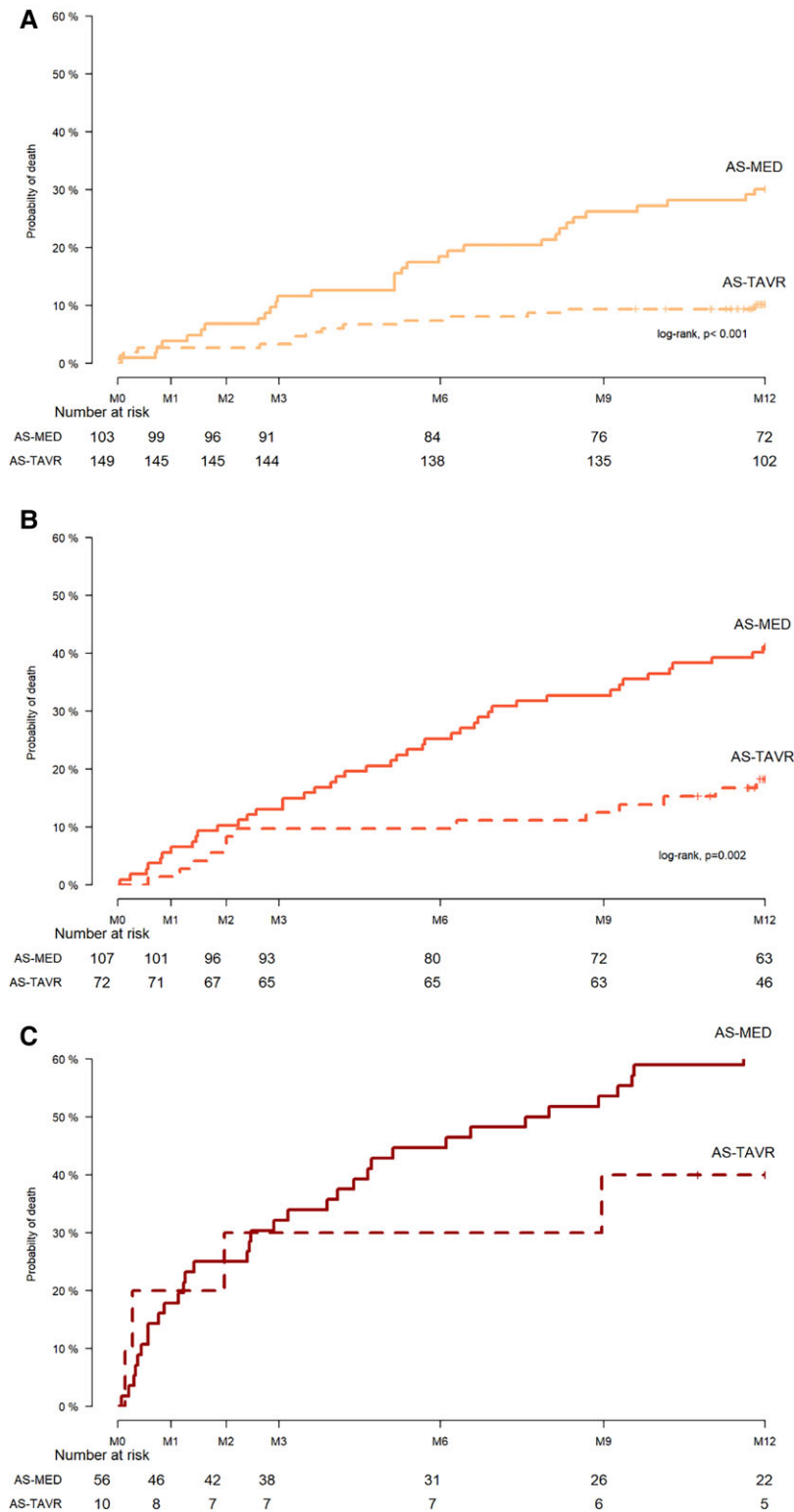
## Discussion

This study showed that, beyond a certain comorbidity burden determinable with CAPRI and Charlson scores, mortality was high and poorly reduced by TAVR. In our opinion, this would suggest an objective situation of futility.

In this study, in agreement with the previous literature, TAVR had a positive effect vs. no-TAVR; it decreased by 66% the rate of all-cause death.<sup>17</sup> However, undergoing TAVR was linked with specific patient characteristics; essentially, the comorbidity burden. Indeed, as expected, this comorbidity burden was lower in patients who



**Figure 3** Distribution of the three prognosis categories in the aortic stenosis cohort treated medically and the aortic stenosis cohort treated by transcatheter aortic valve replacement.



**Figure 4** Probability of death in cohort of aortic stenosis patients treated by transcatheter aortic valve replacement vs. cohort of aortic stenosis patients treated medically in the good (upper panel), intermediate (middle panel), and poor (lower panel) prognosis categories.

received TAVR than in those who did not, which had a beneficial effect on survival. This was illustrated by the Charlson score that appeared prognostic of all-cause death; it has already been proposed

for risk stratification in patients offered TAVR.<sup>18</sup> Precisely, a threshold of 5 (i.e. identical to the one that defines 'poor prognosis' in the present study) was considered as a meaningful value associated with

an increased risk of 1-year mortality.<sup>19</sup> This was also true for the CAPRI score which encompasses cardiac and non-cardiac comorbidities. This result is the first validation of the CAPRI score as prognostic factor in an external TAVR cohort.

Surprisingly, ADL/IADL frailty indices were not found predictive of 1-year all-cause death. This contrasts with a previous report<sup>9</sup> but confirms that frailty is difficult to standardize.<sup>20</sup> Combining Charlson and CAPRI scores seemed appropriate to establish the three prognosis categories (good, intermediate, poor). The TAVR effect was not uniform across that range of prognoses. In the presence of a high comorbidity level (poor prognosis vs. intermediate and good), TAVR effect seemed to decrease but not disappear. Nevertheless, caution should be taken in interpreting the trends suggested by the poor prognosis category because of a lack of power due to the small sample size of this category. With this limitation in mind, it seems that the lower is the prognosis (or, the higher is the comorbidity burden), the lower is the benefit from TAVR and the higher is the residual risk of death.

This observation does not apply to other medical conditions (such as hypertension) where the higher the risk, the higher the benefit from an intervention.<sup>21</sup> In the case of TAVR, there is a negative association between risk and benefit, which suggests that the greatest part of the risk does not come from the valvular problem<sup>22</sup> but from the comorbidity burden. In the PARTNER trial, one of few studies on TAVR vs. medical treatment, a similar observation was made; there was a significant unfavourable association between STS score and 2-year mortality and the survival benefit from TAVR decreased as the STS score increased.<sup>6</sup> However, the STS score was not associated with mortality in the medically treated arm<sup>6</sup>; this suggests that STS score is not as integrative as the CAPRI–Charlson combination. This is probably the reason for which adjusting the analysis for the STS score or the Logistic Euroscore did not change the prognostic value of CAPRI and Charlson scores. Other studies addressing futility were previously performed in TAVR cohorts but in the absence of medically treated arm<sup>2</sup>; this did not allow investigating the benefit from TAVR. In the present study, nearly 5% of the patients in the AS-TAVR cohort would not have had a TAVR given their ‘poor’ prognosis. This is close to the 7% futility found in a previous French nationwide survey.<sup>23</sup>

In the good and intermediate prognosis categories (as defined above), survival can be markedly improved by TAVR with a low residual risk; these categories would be the most suitable for the intervention. One unexpected observation of the present study is that, in the AS-MED cohort, an important proportion had a good or intermediate prognosis and could have theoretically benefited from TAVR. The decision not to undertake TAVR is complex; the most frequent reasons are patients’ frailty and the presence of comorbidities as attested by higher Charlson scores and lower ADL/IADL scores in AS-MED than in AS-TAVR cohort. Another reason might be cognitive impairment because 40% of the patients of the AS-MED cohort had a MMS < 24. Not less complex is the subjective part of the decision; that is, the patient’s wish and the physician’s common sense. However, although common sense acts as a safeguard, the heart team decision is not free from bias or judgement errors and the relatively high survival in the AS-MED cohort might put into question the process of decision-making regarding TAVR.

## Study limitations

First, this is not a randomized study; thus, the scores used for adjusting the analysis might not encompass all potential confounders. Yet, these scores have considered more than 30 variables that could not be all included to avoid a detrimental effect of variable number vs. cohort size disequilibrium. Another approach would have been to perform a propensity score matching on CAPRI and Charlson scores, but it has been shown that this grants no significant benefit over the classical adjustment performed herein.<sup>24</sup> Second, IADL and ADL scores were available in less than half the AS-TAVR cohort; this decreased the statistical power but did not introduce a bias because the collection of these indices was systematic after 2015 and not spread over the whole inclusion period. Importantly, the reduced statistical power did not prevent CAPRI and Charlson scores from being the major determinants of 1-year all-cause death (which perhaps may not be as pertinent as the quality of life in a very elderly population). More generally, the use of AS-MED and AS-TAVR cohorts from different centres could have introduced confounders related to differences in medical practice; however, the patients of the two cohorts were equally distributed over the inclusion period, and the AS-TAVR cohort had similar characteristics and showed similar 1-year mortality rate than the patients managed by TAVR in France.<sup>10</sup>

Finally, the benefit from TAVR is not limited to improved survival; other aspects such as functional improvement, symptom relief, or quality of life are also important but could not be analyzed in this cohort. They may undoubtedly shed a different light on the issue of futility.

In conclusion, the benefit from TAVR is possibly predictable from objective parameters and these should be used for decision-making. While the clinical judgment remains essential, it should be the final step after an objective appraisal of TAVR benefits for a given patient condition in a given environment.

## Lead author biography



Pierre Lantelme, MD, PhD, is an interventional cardiologist at Lyon University Hospital, Lyon, France. He is also the Head of the Lyon ESH Excellence Center of Hypertension. His research mainly focuses on vascular issues, such as pulse wave velocity or calcification burden, and their clinical applications in terms of risk prediction. Concerning structural heart diseases, he is committed to improve patient outcome after transcatheter aortic valve replacement (TAVR) by refining patient selection and avoiding futile indications. He has developed the CAPRI score for predicting 1-year outcome after TAVR, a dedicated score largely based on aorta calcification burden.

## Data availability

The data will be shared on reasonable request to the corresponding author.



## Supplementary material

Supplementary material is available at *European Heart Journal Open* online.

## Acknowledgements

We are greatly indebted to Philip Robinson and Jean Iwaz for their critical reading and editing of the manuscript.

**Conflict of interest:** O.M. received consulting fees and grants from Edwards. The other authors had no conflicts of interest to disclose.

## References

- Baumgartner H, Falk V, Bax JJ, De Bonis M, Hamm C, Holm PJ, Lung B, Lancellotti P, Lansac E, Rodriguez Muñoz D, Rosenhek R, Sjögren J, Tornos Mas P, Vahanian A, Walther T, Wendler O, Windecker S, Zamorano JL, Roffi M, Alfieri O, Agewall S, Ahlsson A, Barbato E, Bueno H, Collet J-P, Coman IM, Czerny M, Delgado V, Fritsimons D, Folliguet T, Gaemperli O, Habib G, Harringer W, Haude M, Hindricks G, Katus HA, Knuuti J, Kolh P, Leclercq C, McDonagh TA, Piepoli MF, Pierard LA, Ponikowski P, Rosano GMC, Ruschitzka F, Shlyakhto E, Simpson IA, Sousa-Uva M, Stepińska J, Tarantini G, Tchéché D, Aboyans V, Windecker S, Aboyans V, Agewall S, Barbato E, Bueno H, Coca A, Collet J-P, Coman IM, Dean V, Delgado V, Fritsimons D, Gaemperli O, Hindricks G, Lung B, Jüni P, Katus HA, Knuuti J, Lancellotti P, Leclercq C, McDonagh T, Piepoli MF, Ponikowski P, Richter DJ, Roffi M, Shlyakhto E, Simpson IA, Zamorano JL, Kzhdryan HK, Mascherbauer J, Samadov F, Shumavets V, Camp GV, Lončar D, Lovric D, Georgiou GM, Linhartova K, Ihlemann N, Abdelhamid M, Pern T, Turpeinen A, Srbinska-Kostovska E, Cohen A, Bakhtashvili Z, Ince H, Vavuranakis M, Temesvári A, Gudnason T, Mylotte D, Kuperstein R, Indolfi C, Pya Y, Bajraktari G, Kerimkulova A, Rudzitis A, Mizariene V, Lebrun F, Demarco DC, Oukerraj L, Bouma BJ, Steigen TK, Komar M, De Moura Branco LM, Popescu BA, Uspenskiy V, Foscoli M, Jovicic L, Simkova I, Bunc M, de Prada JAV, Stagno M, Kaufmann BA, Mahdhaoui A, Bozkurt E, Nesukay E, Brecker SJD. 2017 ESC/EACTS Guidelines for the management of valvular heart disease. *Eur Heart J* 2017;**38**: 2739–2791.
- Puri R, Lung B, Cohen DJ, Rodes-Cabau J. TAVI or No TAVI: identifying patients unlikely to benefit from transcatheter aortic valve implantation. *Eur Heart J* 2016;**37**: 2217–2225.
- Gilard M, Eltchaninoff H, Lung B, Donzeau-Gouge P, Chevreul K, Fajadet J, Leprince P, Leguerrier A, Lieve M, Prat A, Teiger E, Lefevre T, Himbert D, Tchetche D, Carrié D, Albat B, Cribier A, Rioufol G, Sudre A, Blanchard D, Collet F, Santos PD, Meneveau N, Tirouvanziam A, Caussin C, Guyon P, Boschat J, Le Breton H, Collart F, Houel R, Delpine S, Souteyrand G, Favereau X, Ohlmann P, Doisy V, Grollier G, Gommeaux A, Claudel J-P, Bourlon F, Bertrand B, Van Belle E, Laskar M. Registry of transcatheter aortic-valve implantation in high-risk patients. *N Engl J Med* 2012;**366**:1705–1715.
- Durand E, Borz B, Godin M, Tron C, Litzler PY, Bessou JP, Dacher J-N, Bauer F, Cribier A, Eltchaninoff H. Performance analysis of EuroSCORE II compared to the original logistic EuroSCORE and STS scores for predicting 30-day mortality after transcatheter aortic valve replacement. *Am J Cardiol* 2013;**111**:891–897.
- Ludman PF, Moat N, de Belder MA, Blackman DJ, Duncan A, Banya W, MacCarthy PA, Cunningham D, Wendler O, Marlee D, Hildick-Smith D, Young CP, Kovac J, Uren NG, Spyt T, Trivedi U, Howell J, Gray H. Transcatheter aortic valve implantation in the United Kingdom. *Circulation* 2015;**131**:1181–1190.
- Makkar RR, Fontana GP, Jilaihawi H, Kapadia S, Pichard AD, Douglas PS, Thourani VH, Babaliaros VC, Webb JG, Herrmann HC, Bavaria JE, Kodali S, Brown DL, Bowers B, Dewey TM, Svensson LG, Tuzcu M, Moses JW, Williams MR, Siegel RJ, Akin JJ, Anderson WN, Pocock S, Smith CR, Leon MB. Transcatheter aortic-valve replacement for inoperable severe aortic stenosis. *N Engl J Med* 2012;**366**: 1696–1704.
- Lantelme P, Eltchaninoff H, Rabilloud M, Souteyrand G, Dupre M, Spaziano M, Bonnet M, Beclé C, Riche B, Durand E, Bouvier E, Dacher J-N, Courand P-Y, Cassagnes L, Dávila Serrano EE, Motreff P, Bussel L, Lefevre T, Harbaoui B. Development of a risk score based on aortic calcification to predict 1-year mortality after transcatheter aortic valve replacement. *JACC Cardiovasc Imaging* 2019;**12**: 123–132.
- Munoz-Garcia AJ, Hernandez-Garcia JM, Jimenez-Navarro MF, Alonso-Briales JH, Dominguez-Franco AJ, Rodriguez-Bailon I, Molina-Mora MJ, Hernández-Rodríguez P, Such-Martínez M, de Teresa-Galván E. Survival and predictive factors of mortality after 30 days in patients treated with percutaneous implantation of the corevalve aortic prosthesis. *Am Heart J* 2012;**163**:28–294.
- Roca F, Durand E, Eltchaninoff H, Chassagne P. Predictive value for outcome and evolution of geriatric parameters after transcatheter aortic valve implantation. *J Nutr Health Aging* 2020;**24**:598–605.
- Lantelme P, Bisson A, Lacour T, Herbert J, Ivanov F, Bourguignon T, Angoulvant D, Harbaoui B, Bonnet M, Babuty D, Saint Etienne C, Deharo P, Fauchier L. Timing of coronary revascularization and transcatheter aortic valve replacement. *JACC Cardiovasc Intervent* 2021;**14**:484–486.
- Attinger-Toller A, Ferrari E, Tueller D, Templin C, Müller O, Nietlispach F, Toggweiler S, Noble S, Roffi M, Jeger R, Huber C, Carrel T, Pilgrim T, Wenaweser P, Togni M, Cook S, Heg D, Windecker S, Goy J-J, Stortecky S. Age-related outcomes after transcatheter aortic valve replacement. *JACC: Cardiovasc Intervent* 2021;**14**: 952–960.
- Harbaoui B, Durand E, Dupre M, Rabilloud M, Souteyrand G, Courand PY, Bussel L, Lefevre T, Eltchaninoff H, Lantelme P. Significance of the CAPRI risk score to predict heart failure hospitalization post-TAVI: the CAPRI-HF study. *Int J Cardiol* 2019;**296**: 98–102.
- Harbaoui B, Courand PY, Charles P, Dauphin R, Bussel L, Jegaden O, Dubreuil O, de Gevigny G, Lantelme P. Aortic calcifications present the next challenge after TAVR. *J Am Coll Cardiol* 2015;**65**:1058–1060.
- Gegenava T, Vollema EM, Abou R, Goedemans L, van Rosendael A, van der Kley F, de Weger A, Ajmone Marsan N, Bax JJ, Delgado V. Prognostic value of thoracic aorta calcification burden in patients treated with TAVR. *JACC Cardiovasc Imaging* 2019;**12**(1):216–217.
- Hamandi M, Amiens P, Grayburn PA, Al-Aziki K, van Zyl JS, Lanfear AT, Rabilloud M, Riche B, Gopal A, Szerlip MA, Potluri S, DiMaio JM, Mack MJ, Harbaoui B, Lantelme P. Usefulness of thoracic aortic calcium to predict 1-year mortality after transcatheter aortic valve implantation. *Am J Cardiol* 2021;**140**:103–109.
- Harbaoui B, Montoy M, Charles P, Bussel L, Liebgott H, Girerd N, Courand P-Y, Lantelme P. Aorta calcification burden: towards an integrative predictor of cardiac outcome after transcatheter aortic valve implantation. *Atherosclerosis* 2016;**246**: 161–168.
- Leon MB, Smith CR, Mack M, Miller DC, Moses JW, Svensson LG, Tuzcu EM, Webb JG, Fontana GP, Makkar RR, Brown DL, Block PC, Guyton RA, Pichard AD, Bavaria JE, Herrmann HC, Douglas PS, Petersen JL, Akin JJ, Anderson WN, Wang D, Pocock S. Transcatheter aortic-valve implantation for aortic stenosis in patients who cannot undergo surgery. *N Engl J Med* 2010;**363**:1597–1607.
- Bagur R, Martin GP, Nombela-Franco L, Doshi SN, George S, Toggweiler S, Sponga S, Cotton JM, Khogali SS, Ratib K, Kinnaird T, Anderson RA, Chu MWA, Kiaii B, Biagioli C, Schofield-Kelly L, Loretz L, Torracchi L, Sekar B, Kwok CS, Sperrin M, Ludman PF, Mamas MA. Association of comorbid burden with clinical outcomes after transcatheter aortic valve implantation. *Heart* 2018;**104**:2058–2066.
- Hermiller Jr JB, Yakubov SJ, Reardon MJ, Deeb GM, Adams DH, Afilalo J, Huang J, Popma JJ. Predicting early and late mortality after transcatheter aortic valve replacement. *J Am Coll Cardiol* 2016;**68**:343–352.
- Afilalo J, Alexander KP, Mack MJ, Maurer MS, Green P, Allen LA, Popma JJ, Ferrucci L, Forman DE. Frailty assessment in the cardiovascular care of older adults. *J Am Coll Cardiol* 2014;**63**:747–762.
- Ogden LG, He J, Lydick E, Whelton PK. Long-term absolute benefit of lowering blood pressure in hypertensive patients according to the JNC VI risk stratification. *Hypertension* 2000;**35**:539–543.
- Urena M, Webb JG, Eltchaninoff H, Munoz-Garcia AJ, Boulet C, Tamburino C, Nombela-Franco L, Nietlispach F, Moris C, Ruel M, Dager AE, Serra V, Cheema AN, Amat-Santos IJ, de Brito FS, Lemos PA, Abizaid A, Sarmento-Leite R, Ribeiro HB, Dumont E, Barbanti M, Durand E, Alonso Briales JH, Himbert D, Vahanian A, Immé S, Garcia E, Maisano F, del Valle R, Benitez LM, García del Blanco B, Gutiérrez H, Perin MA, Siqueira D, Bernardi G, Philippon F, Rodés-Cabau J. Late cardiac death in patients undergoing transcatheter aortic valve replacement. *J Am Coll Cardiol* 2015;**65**:437–448.
- Lantelme P, Lacour T, Bisson A, Herbert J, Ivanov F, Bourguignon T, Quilliet L, Angoulvant D, Harbaoui B, Babuty D, Etienne CS, Deharo P, Bernard A, Fauchier L. Futility risk model for predicting outcome after transcatheter aortic valve implantation. *Am J Cardiol* 2020;**130**:100–107.
- Elze MC, Gregson J, Baber U, Williamson E, Sartori S, Mehran R. Comparison of propensity score methods and covariate adjustment: evaluation in 4 cardiovascular studies. *J Am Coll Cardiol* 2017;**69**:345–357.