

Serveur Académique Lausannois SERVAL serval.unil.ch

Author Manuscript

Faculty of Biology and Medicine Publication

This paper has been peer-reviewed but does not include the final publisher proof-corrections or journal pagination.

Published in final edited form as:

Title: Common variants near MC4R are associated with fat mass, weight and risk of obesity.

Authors: Loos RJ, Lindgren CM, Li S, Wheeler E, Zhao JH, Prokopenko I, Inouye M, Freathy RM, Attwood AP, Beckmann JS, Berndt SI, Prostate, Lung, Colorectal, and Ovarian (PLCO) Cancer Screening Trial., Jacobs KB, Chanock SJ, Hayes RB, Bergmann S, Bennett AJ, Bingham SA, Bochud M, Brown M, Cauchi S, Connell JM, Cooper C, Smith GD, Day I, Dina C, De S, Dermitzakis ET, Doney AS, Elliott KS, Elliott P, Evans DM, Sadaf Farooqi I, Froguel P, Ghorji J, Groves CJ, Gwilliam R, Hadley D, Hall AS, Hattersley AT, Hebebrand J, Heid IM, KORA., Lamina C, Gieger C, Illig T, Meitinger T, Wichmann HE, Herrera B, Hinney A, Hunt SE, Jarvelin MR, Johnson T, Jolley JD, Karpe F, Keniry A, Khaw KT, Luben RN, Mangino M, Marchini J, McArdle WL, McGinnis R, Meyre D, Munroe PB, Morris AD, Ness AR, Neville MJ, Nica AC, Ong KK, O'Rahilly S, Owen KR, Palmer CN, Papadakis K, Potter S, Pouta A, Qi L, Nurses'

In the absence of a copyright statement, users should assume that standard copyright protection applies, unless the article contains an explicit statement to the contrary. In case of doubt, contact the journal publisher to verify the copyright status of an article.

Published in final edited form as:

Nat Genet. 2008 June ; 40(6): 768–775. doi:10.1038/ng.140.

Common variants near *MC4R* are associated with fat mass, weight and risk of obesity

Ruth J F Loos^{1,2,73}, Cecilia M Lindgren^{3,4,73}, Shengxu Li^{1,2,73}, Eleanor Wheeler⁵, Jing Hua Zhao^{1,2}, Inga Prokopenko^{3,4}, Michael Inouye⁵, Rachel M Freathy^{6,7}, Antony P Attwood^{5,8}, Jacques S Beckmann^{9,10}, Sonja I Berndt¹¹, The Prostate, Lung, Colorectal, and Ovarian (PLCO) Cancer Screening Trial⁷¹, Sven Bergmann^{9,12}, Amanda J Bennett^{3,4}, Sheila A Bingham¹³, Murielle Bochud¹⁴, Morris Brown¹⁵, Stéphane Cauchi¹⁶, John M Connell¹⁷, Cyrus Cooper¹⁸, George Davey Smith¹⁹, Ian Day¹⁸, Christian Dina¹⁶, Subhajyoti De²⁰, Emmanouil T Dermizakis⁵, Alex S F Doney²¹, Katherine S Elliott³, Paul Elliott^{22,23}, David M Evans^{3,19}, I Sadaf Farooqi^{2,24}, Philippe Froguel^{16,25}, Jilur Ghorji⁵, Christopher J Groves^{3,4}, Rhian Gwilliam⁵, David Hadley²⁶, Alistair S Hall²⁷, Andrew T Hattersley^{6,7}, Johannes Hebebrand²⁸, Iris M Heid^{29,30}, KORA⁷¹, Blanca Herrera^{3,4}, Anke Hinney²⁸, Sarah E Hunt⁵, Marjo-Riitta Jarvelin^{22,23,31}, Toby Johnson^{9,12,14}, Jennifer D M Jolley⁸, Fredrik Karpe⁴, Andrew Keniry⁵, Kay-Tee Khaw³², Robert N Luben³², Massimo Mangino³³, Jonathan Marchini³⁴, Wendy L McArdle³⁵, Ralph McGinnis⁵, David Meyre¹⁶, Patricia B Munroe³⁶, Andrew D Morris²¹, Andrew R Ness³⁷, Matthew J Neville⁴, Alexandra C Nica⁵, Ken K Ong^{1,2}, Stephen O'Rahilly^{2,24}, Katharine R Owen⁴, Colin N A Palmer³⁸, Konstantinos Papadakis²⁶, Simon Potter⁵, Anneli Pouta^{31,39}, Lu Qi⁴⁰, Nurses' Health Study⁷¹, Joshua C Randall^{3,4}, Nigel W Rayner^{3,4}, Susan M Ring³⁵, Manjinder S Sandhu^{1,32}, André Scherag⁴¹, Matthew A Sims^{1,2}, Kijoung Song⁴², Nicole Soranzo⁵, Elizabeth K Speliotes^{43,44}, Diabetes Genetics Initiative⁷¹, Holly E Syddall¹⁸, Sarah A Teichmann²⁰, Nicholas J Timpson^{3,19}, Jonathan H Tobias⁴⁵, Manuela Uda⁴⁶, The SardiNIA Study⁷¹, Carla I Ganz Vogel²⁸, Chris

© 2008 Nature Publishing Group

Correspondence should be addressed to I.B. (ib1@sanger.ac.uk), N.J.W. (nick.wareham@mrc-epid.cam.ac.uk) or M.I.M. (mark.mccarthy@drl.ox.ac.uk).

⁷¹A full list of authors is provided at the end of the reference list.

⁷²A full list of authors is provided in the **Supplementary Note** online.

⁷³These authors contributed equally to this work.

AUTHOR CONTRIBUTIONS

Writing team: R.J.F.L., C.M.L., S.L., M.I.M., N.J.W., I.B.

Project management: R.J.F.L., C.M.L., P.D., M.I.M., N.J.W., I.B.

Genome-wide association sampling, genotyping and analysis: R.J.F.L., C.M.L., S.L., E.W., J.H.Z., I.P., M.I., A.P.A., J.S.B., S.B., S.A.B., M. Bochud, M. Brown, J.M.C., D.M.E., J.G., R.G., D.H., A.S.H., A.T.H., S.E.H., T.J., J.D.M.J., A.K., K.-T.K., R.L., M.M., J.M., W.L.M., R.M., P.B.M., A.C.N., K.K.O., K.P., S.P., S.M.R., M.S.S., M.A.S., K.S., N.S., N.J.T., C.W., D.M.W., M.N.W., The Wellcome Trust Case Control Consortium, X.Y., E.Z., D.P.S., W.H.O., M.J.C., N.J.S., T.M.F., P.V., G.W., V.M., P.D., M.I.M., N.J.W., I.B., A.J.B.

Replication samples, genotyping and analysis in adults: R.J.F.L., C.M.L., S.L., R.M.F., A.P.A., A.B., S.C., C.C., G.D.S., I.D., C.D., A.S.F.D., P.E., D.M.E., P.F., C.J.G., A.T.H., M.-R.J., J.D.M.J., F.K., D.M., A.D.M., M.J.N., K.K.O., S.O., K.R.O., C.N.A.P., A.P., A.R.N., S.M.R., M.S.S., M.A.S., H.E.S., N.J.T., M.N.W., V.L.W., E.Z., W.H.O., T.M.F., M.I.M., N.J.W., I.B.

GIANT Consortium samples, genotyping and analysis: S.I.B., K.B.J., S.J.C., R.B.H., I.M.H., C.L., C.G., T.I., T.M., H.-E.W., L.Q., P.K., S.E.H., D.J.H., F.B.H., E.K.S., H.N.L., B.F.V., M.R., L.G., J.N.H., M.U., P.S., S.S., G.R.A., G.A., R.N., D.S., C.J.W., A.U. J., J.T., F.S.C., M. Boehnke, K.L.M., FUSION, DGI, PLCO, NHS, SardiNIA.

Replication samples, analysis and genotyping in children: R.M.F., S.C., G.D.S., I.D., C.D., I.S.F., P.F., A.T.H., J.H., A.H., D.M., A.R.N., K.K.O., S.O., S.M.R., A.S., N.J.T., J.H.T., V.L.W., T.M.F., C.I.G.V.

Statistical analysis and informatics: R.J.F.L., C.M.L., S.L., J.H.Z., I.P., R.M.F., S.D., E.T.D., K.S.E., B.H., S.E.H., T.J., J.M., R.M., S.P., J.C.R., N.W.R., A.S., S.A.T., N.J.T., E.Z., M.I.M., N.J.W., I.B.

COMPETING INTERESTS STATEMENT

The authors declare competing financial interests: details accompany the full-text HTML version of the paper at <http://www.nature.com/naturegenetics/>.

Reprints and permissions information is available online at <http://npg.nature.com/reprintsandpermissions>

Supplementary information is available on the Nature Genetics website.

Wallace³⁶, Dawn M Waterworth⁴², Michael N Weedon^{6,7}, The Wellcome Trust Case Control Consortium⁷², Cristen J Willer⁴⁷, FUSION⁷¹, Vicki L Wraight^{2,24}, Xin Yuan⁴², Eleftheria Zeggini³, Joel N Hirschhorn^{44,48,51}, David P Strachan²⁶, Willem H Ouwehand⁸, Mark J Caulfield³⁶, Nilesh J Samani³³, Timothy M Frayling^{6,7}, Peter Vollenweider⁵², Gerard Waeber⁵², Vincent Mooser⁴², Panos Deloukas⁵, Mark I McCarthy^{3,4,73}, Nicholas J Wareham^{1,2,73}, Inês Barroso^{5,73}, Kevin B Jacobs⁵³, Stephen J Chanock^{11,54}, Richard B Hayes¹¹, Claudia Lamina²⁹, Christian Gieger^{29,30}, Thomas Illig²⁹, Thomas Meitinger^{55,56}, H-Erich Wichmann^{29,30}, Peter Kraft⁵⁷, Susan E Hankinson⁵⁸, David J Hunter^{40,44,57,58}, Frank B Hu^{40,58}, Helen N Lyon^{44,48,50}, Benjamin F Voight^{44,59,60,61}, Martin Ridderstrale⁶², Leif Groop^{62,63}, Paul Scheet⁶⁴, Serena Sanna⁴⁶, Goncalo R Abecasis⁶⁴, Giuseppe Albai⁴⁶, Ramaiah Nagaraja⁶⁵, David Schlessinger⁶⁵, Anne U Jackson⁴⁷, Jaakko Tuomilehto^{66,68}, Francis S Collins⁶⁹, Michael Boehnke⁴⁷, and Karen L Mohlke⁷⁰

¹MRC Epidemiology Unit, Addenbrooke's Hospital, Cambridge CB2 0QQ, UK. ²Institute of Metabolic Science, Addenbrooke's Hospital, Cambridge CB2 0QQ, UK. ³Wellcome Trust Centre for Human Genetics, University of Oxford, Roosevelt Drive, Oxford OX3 7BN, UK. ⁴Oxford Centre for Diabetes, Endocrinology and Metabolism, University of Oxford, Churchill Hospital, Oxford OX3 7LJ, UK. ⁵Wellcome Trust Sanger Institute, Hinxton, Cambridge CB10 1SA, UK. ⁶Genetics of Complex Traits, Institute of Biomedical and Clinical Science, Peninsula Medical School, Magdalen Road, Exeter EX1 2LU, UK. ⁷Diabetes Genetics, Institute of Biomedical and Clinical Science, Peninsula Medical School, Barrack Road, Exeter EX2 5DW, UK. ⁸Department of Haematology, University of Cambridge, and NHS (National Health Service) Blood and Transplant, Cambridge Centre, Long Road, Cambridge, UK. ⁹Department of Medical Genetics, University of Lausanne, 1011, Switzerland. ¹⁰Service of Medical Genetics, Centre Hospitalier Universitaire Vaudois (CHUV), Lausanne, 1011, Switzerland. ¹¹Division of Cancer Epidemiology and Genetics, National Cancer Institute (NCI), National Institutes of Health (NIH), Department of Health and Human Services (DHHS), Bethesda, Maryland. ¹²Swiss Institute of Bioinformatics, Lausanne 1015, Switzerland. ¹³MRC Dunn Human Nutrition Unit, Wellcome Trust/MRC Building, Cambridge CB2 0XY, UK. ¹⁴University Institute of Social and Preventive Medicine, Centre Hospitalier Universitaire Vaudois (CHUV), Lausanne, 1011 Switzerland. ¹⁵Clinical Pharmacology Unit, University of Cambridge, Addenbrooke's Hospital, Cambridge, UK. ¹⁶CNRS-8090-Institute of Biology, Pasteur Institute, Lille 5900, France. ¹⁷BHF Glasgow Cardiovascular Research Centre, University of Glasgow, Glasgow G12 8TA, UK. ¹⁸MRC Epidemiology Resource Centre, University of Southampton, Southampton SO16 6YD, UK. ¹⁹The MRC Centre for Causal Analyses in Translational Epidemiology, University of Bristol, Bristol BS8 2PR, UK. ²⁰MRC Laboratory of Molecular Biology, Cambridge CB2 2QH, UK. ²¹Diabetes Research Group, Division of Medicine and Therapeutics, Ninewells Hospital and Medical School, University of Dundee, Dundee DD1 9SY, UK. ²²Department of Epidemiology and Public Health, Imperial College London, Norfolk Place, London W2 1PG, UK. ²³Department of Public Health Science and General Practice, Fin-90014, University of Oulu, Finland. ²⁴Metabolic Research Laboratories, University of Cambridge, Cambridge CB2 0QQ, UK. ²⁵Genomic Medicine, Hammersmith Hospital, Imperial College London, London W12 0NN, UK. ²⁶Division of Community Health Sciences, St George's, University of London, London SW17 0RE, UK. ²⁷LIGHT Research Institutes, Faculty of Medicine and Health, University of Leeds, Leeds LS2 9JT, UK. ²⁸Department of Child and Adolescent Psychiatry, University of Duisburg-Essen, D45147 Essen, Germany. ²⁹GSF-Institute of Epidemiology, D-85764 Neuherberg-Munich, Germany. ³⁰IBE Chair of Epidemiology, University of Munich, D-81377 Munich, Germany. ³¹Department of Child and Adolescent Health, National Public Health Institute, Oulu 90221, Finland. ³²Department of Public Health and Primary Care, Institute of Public Health, University of Cambridge, Cambridge CB2 2SR, UK. ³³Department of Cardiovascular Sciences, University of Leicester, Glenfield Hospital, Groby Road, Leicester LE3 9QP, UK. ³⁴Department of Statistics, University of Oxford, 1 South Parks Road, Oxford OX1 3TG, UK. ³⁵Department of Social Medicine, University of Bristol, Canynge Hall, Whiteladies Road,

Bristol BS8 2PR, UK. ³⁶Clinical Pharmacology and Barts and The London Genome Centre, William Harvey Research Institute, Barts and The London, Queen Mary's School of Medicine, Charterhouse Square, London EC1M 6BQ, UK. ³⁷Department of Oral and Dental Science, Bristol Dental School, University of Bristol, Lower Maudlin Street, Bristol BS1 2LY, UK. ³⁸Population Pharmacogenetics Group, Biomedical Research Centre, Ninewells Hospital and Medical School, University of Dundee, Dundee DD1 9SY, UK. ³⁹Department of Obstetrics and Gynaecology, University Hospital of Oulu, P.P. Box 22, Oulu 90221, Finland. ⁴⁰Department of Nutrition, Harvard School of Public Health, Boston, Massachusetts 02115, USA. ⁴¹Institute of Medical Informatics, Biometry and Epidemiology, University of Duisburg-Essen, 45122 Essen, Germany. ⁴²Medical Genetics/Clinical Pharmacology and Discovery Medicine, King of Prussia, Pennsylvania 19406, USA. ⁴³Department of Gastroenterology, Massachusetts General Hospital and Harvard Medical School, Boston, Massachusetts 02114, USA. ⁴⁴Broad Institute at MIT and Harvard, Boston, Massachusetts 02115, USA. ⁴⁵Clinical Science at South Bristol, University of Bristol, Bristol BS2 8AE, UK. ⁴⁶Istituto di Neurogenetica e Neurofarmacologia, Consiglio Nazionale delle Ricerche, Cagliari 09100, Italy. ⁴⁷Department of Biostatistics and Center for Statistical Genetics, University of Michigan, Ann Arbor, Michigan 48109, USA. ⁴⁸Department of Genetics, Harvard Medical School, Boston, Massachusetts 02115, USA. ⁴⁹Division of Genetics, Children's Hospital, Boston, Massachusetts 02115, USA. ⁵⁰Department of Pediatrics, Harvard Medical School, Boston, Massachusetts 02115, USA. ⁵¹Division of Endocrinology, Children's Hospital, Boston, Massachusetts 02115, USA. ⁵²Department of Medicine and Internal Medicine, Centre Hospitalier Universitaire Vaudois (CHUV), Lausanne, 1011, Switzerland. ⁵³Bioinformed Consulting Services, Gaithersburg, Maryland 20877, USA. ⁵⁴Pediatric Oncology Branch, Center for Cancer Research, NCI, NIH, DHHS, Bethesda, Maryland 20892, USA. ⁵⁵GSF-Institute of Human Genetics, D-85764 Neuherberg-Munich, Germany. ⁵⁶Institute of Human Genetics, Technical University Munich, Munich D-81671, Germany. ⁵⁷Program in Molecular and Genetic Epidemiology, Harvard School of Public Health, Boston, Massachusetts 02115, USA. ⁵⁸Channing Laboratory, Department of Medicine, Brigham and Women's Hospital, Boston, Massachusetts 02115, USA. ⁵⁹Center for Human Genetic Research, Massachusetts General Hospital, Boston, Massachusetts 02114, USA. ⁶⁰Department of Medicine, Massachusetts General Hospital and Harvard Medical School Boston, Massachusetts 02114, USA. ⁶¹Department of Molecular Biology, Massachusetts General Hospital, Boston, Massachusetts 02114, USA. ⁶²Department of Clinical Sciences, Diabetes and Endocrinology Research Unit, University Hospital Malmö, Lund University, Malmö S-205 02, Sweden. ⁶³Department of Medicine, Helsinki University Hospital, University of Helsinki, Helsinki 00029, Finland. ⁶⁴Center for Statistical Genetics, Department of Biostatistics, University of Michigan, Ann Arbor, Michigan 48109, USA. ⁶⁵Gerontology Research Center, National Institute on Aging, Baltimore, Maryland 21244, USA. ⁶⁶Diabetes Unit, Department of Epidemiology and Health Promotion, National Public Health Institute, 00300 Helsinki, Finland. ⁶⁷Department of Public Health, University of Helsinki, 00014 Helsinki, Finland. ⁶⁸South Ostrobothnia Central Hospital, 60220 Seinäjoki, Finland. ⁶⁹Genome Technology Branch, National Human Genome Research Institute, Bethesda, Maryland 20892, USA. ⁷⁰Department of Genetics, University of North Carolina, Chapel Hill, North Carolina 27599, USA.

Abstract

To identify common variants influencing body mass index (BMI), we analyzed genome-wide association data from 16,876 individuals of European descent. After previously reported variants in *FTO*, the strongest association signal ($rs17782313$, $P = 2.9 \times 10^{-6}$) mapped 188 kb downstream of *MC4R* (melanocortin-4 receptor), mutations of which are the leading cause of monogenic severe childhood-onset obesity. We confirmed the BMI association in 60,352 adults (per-allele effect = 0.05 *Z*-score units; $P = 2.8 \times 10^{-15}$) and 5,988 children aged 7–11 (0.13 *Z*-score units; $P = 1.5 \times 10^{-8}$). In case-control analyses ($n = 10,583$), the odds for severe childhood obesity reached 1.30 ($P = 8.0 \times 10^{-11}$). Furthermore, we observed overtransmission of the risk allele to obese

offspring in 660 families (P (pedigree disequilibrium test average; PDT-avg) = 2.4×10^{-4}). The SNP location and patterns of phenotypic associations are consistent with effects mediated through altered *MC4R* function. Our findings establish that common variants near *MC4R* influence fat mass, weight and obesity risk at the population level and reinforce the need for large-scale data integration to identify variants influencing continuous biomedical traits.

Although BMI is highly heritable, progress in identifying specific variants involved in regulating weight has largely been confined to rare mutations causing severe, early-onset monogenic forms of obesity¹⁻⁶. Recently, the *FTO* gene was identified as the first locus harboring common variants with an unequivocal impact on obesity predisposition and fat mass at the population level⁷⁻⁹. To increase power to detect additional common variants associated with these traits, and to improve our understanding of the molecular mechanisms responsible, we carried out a large-scale meta-analysis of genome-wide association data available for 16,876 individuals phenotyped for adult BMI.

Meta-analysis, under an additive model, of data from four European population-based studies ($n = 11,012$) and three disease-case series ($n = 5,864$), all genotyped on the Affymetrix GeneChip 500K array (Supplementary Table 1, Supplementary Fig. 1 and Supplementary Note online), demonstrated that *FTO* variants had the strongest association with BMI (for example, rs1121980: beta = 0.060 (95% CI = 0.039–0.082) Z -score units (that is, \log_{10} -transformed BMI, standardized by gender and age, per-allele); $P = 3.6 \times 10^{-8}$) (Supplementary Table 2, Supplementary Fig. 2 and Supplementary Note online). Among the nine remaining signals with $P < 10^{-5}$ (Supplementary Table 2 and Supplementary Figs. 2 and 3 online), we focused our initial attention on a cluster of associated SNPs on chromosome 18q21 for which the most significant association resides at rs17782313 ($P = 2.9 \times 10^{-6}$).

This region seemed to contain at least two independent association signals (rs17782313 and rs17700633: minor allele frequencies 24% and 30% respectively; Supplementary Table 3 online) with low pair-wise linkage disequilibrium (LD; $r^2 = 0.08$, $D' = 0.33$ in CEU HapMap) mapping 109–188 kb from the coding sequence of *MC4R* (Fig. 1). *MC4R* represents a compelling biological candidate, as rare coding mutations in the gene are the leading cause of monogenic obesity in humans¹⁰.

Association analysis of imputed genotype data¹¹, based on 16,876 samples from the seven populations, for untyped HapMap SNPs across the region (55.7–56.4 Mb NCBI build 35) showed that rs17782313 has the strongest association overall and that there were no other (imputed or directly genotyped) SNPs with markedly stronger association than either rs17782313 or rs17700633 (Fig. 1). Analyses of LD relationships, as well as haplotypic and conditional analyses, established that these associations were not secondary to previously reported associations with the V103I and I251L coding variants, of which the (rare) minor alleles are weakly protective for obesity at the population level¹²⁻¹⁴ (Supplementary Note). Several lines of evidence indicated that our association was unlikely to reflect latent population substructure (Supplementary Note). Consequently, we focused follow-up efforts on these two SNPs, seeking evidence for replication in 60,352 samples with measures of adult BMI.

First, we genotyped both SNPs in ten adult population-based studies (combined $n = 40,717$) and three disease-case series ($n = 3,757$) (Supplementary Fig. 1, Supplementary Table 1 and Supplementary Note) of individuals all of European descent. Across all 44,474 individuals, rs17782313 was strongly associated with BMI (combined per-allele effect = 0.049 (95% CI = 0.033–0.065) Z -score units, $P = 1.3 \times 10^{-9}$; Supplementary Fig. 4a online), with less

marked evidence for replication at rs17700633 (0.025 (0.011–0.040) *Z*-score units, $P=0.0007$; Supplementary Fig. 4b).

Second, we obtained additional genotypes from six population-based studies ($n=13,240$) and two disease-case series ($n=2,638$), all individuals of European origin undergoing genome-wide association analysis within the Genetic Investigation of Anthropometric Traits (GIANT) Consortium (Supplementary Table 1 and Supplementary Note). In these 15,878 individuals, rs17782313 was again associated with BMI (combined per-allele effect = 0.035 (0.006–0.063) *Z*-score units, $P=0.02$; Supplementary Fig. 4c), with comparable effect size and evidence for replication at rs17700633 (0.041 (0.015–0.067) *Z*-score units, $P=0.002$; Supplementary Fig. 4d).

Combining data across all 77,228 genotyped adults, we found that each copy of the rs17782313 C allele was associated with a difference in BMI of 0.049 (0.037–0.061) *Z*-score units ($P=2.8 \times 10^{-15}$; Fig. 2 and Table 1), equivalent to $\sim 0.22 \text{ kg m}^{-2}$. Evidence for association at rs17700633 was weaker (0.033 (0.022–0.045) *Z*-score units or $\sim 0.15 \text{ kg m}^{-2}$; $P=4.6 \times 10^{-9}$) (Supplementary Fig. 4e and Supplementary Table 4 online). Although initial assessment based on LD patterns from the HapMap had suggested that the effect at rs17700633 was independent of that at rs17782313, conditional analysis conducted on our data show that the effect of the former is substantially attenuated and no longer reaches a strong degree of statistical significance ($P=0.002$ for rs17700633 after conditioning on rs17782313; Supplementary Fig. 4f,g and Supplementary Note). We did not find any evidence for a significant difference in effect size ($P=0.11$) between men (0.058 (0.041–0.076) *Z*-score units) and women (0.039 (0.022–0.055)) at rs17782313 (Supplementary Fig. 4h,i).

The C allele at rs17782313 was positively associated with adult height (per-allele effect = 0.030 (0.018–0.042) *Z*-score units; $P=8.7 \times 10^{-7}$; equivalent to $\sim 0.21 \text{ cm}$) (Supplementary Fig. 4j). Consequently, the association with weight was even stronger than that with BMI (per-allele effect for rs17782313[C] = 0.059 (0.047–0.071) *Z*-score units, $P=2.8 \times 10^{-21}$; equivalent to $\sim 760 \text{ g}$), indicating that rs17782313 influences overall adult size (Supplementary Fig. 4k). Across the 77,228 adult samples, rs17782313 was associated with an $\sim 8\%$ per-allele increase in the odds of being overweight (BMI $\geq 25 \text{ kg m}^{-2}$; $\text{OR}_{\text{overweight}} = 1.08$ (1.05–1.11), $P=1.6 \times 10^{-9}$) and $\sim 12\%$ of being obese (BMI $\geq 30 \text{ kg m}^{-2}$; $\text{OR}_{\text{obesity}} = 1.12$ (1.08–1.16), $P=5.2 \times 10^{-9}$) (Supplementary Fig. 4l,m). In a separate obesity case-control study of 2,766 French adults (Supplementary Table 1), there was a 31% per-allele increase in the odds of being morbidly obese (BMI $\geq 40 \text{ kg m}^{-2}$; $\text{OR}_{\text{morbid-obesity}} = 1.31$ (1.15–1.49), $P=5.6 \times 10^{-5}$).

To understand the effect of rs17782313 on regulation of weight in early life, we first examined 5,988 children from the Avon Longitudinal Study of Parents and Children (Supplementary Table 1). There was no association with birth weight or weight up to 42 months (Supplementary Table 5 online). However, in children aged 7–11 y, each additional copy of rs17782313[C] was associated with a BMI difference of between 0.10 and 0.13 *Z*-score units ($P < 7.3 \times 10^{-6}$) (Fig. 3 and Supplementary Table 5), twice that observed in adults ($P=0.001$). In these children, the association with BMI was mediated exclusively through an effect on weight, with no detectable effect on height (Supplementary Table 5). Body composition data for 5,281 9-year-old children showed that genotype-associated differences in weight and BMI reflected disproportionate effects on fat mass (per-allele effect of rs17782313[C] on percentage body fat = 0.10 (0.05–0.14) *Z*-score units, $P=3.0 \times 10^{-5}$; Fig. 3 and Supplementary Table 5).

These findings were confirmed in three case-control studies of children and adolescents with severe early-onset obesity (Supplementary Note, Supplementary Fig. 1 and Supplementary Table 1). In each, rs17782313 was associated with a significant increase in the risk of extreme obesity: the combined estimate of the OR was 1.30 (1.20–1.41; $P = 8.0 \times 10^{-11}$; Fig. 3 and Supplementary Table 1). In 660 nuclear families, ascertained through children or adolescents with extreme obesity (BMI > 95th percentile), there was a significant overtransmission of the C allele to the obese offspring (56% transmission rate, PDT-avg = 2.42×10^{-4}), providing further evidence that the association does not reflect population stratification (Supplementary Note, Supplementary Fig. 1 and Supplementary Table 1).

Common variants near *MC4R* and *FTO* seem to have additive effects on BMI (Fig. 4). When comparing individuals with no risk alleles at either locus (19% of the population) with those homozygous at both (1%), the point estimate of the BMI difference amounts to 0.26 Z-score units (or $\sim 1.17 \text{ kg m}^{-2}$) in adults and 0.56 Z-score units in children.

Having observed convincing BMI and obesity associations in both adults and children, we next sought refinement of the association signal through meta-analyses of genotyped and imputed data and analysis of LD patterns (Supplementary Fig. 5a online) across 1 Mb of flanking sequence (including the coding region of *MC4R* itself). In contrast to the original analysis of all seven studies (Fig. 1), the meta-analysis restricted to the four population-based studies (Supplementary Fig. 5b) identified three SNPs (rs12955983, rs718475, rs9956279) that had association signals of comparable or stronger magnitude to rs17700633 and rs17782313. When we extended this meta-analysis to include data on all 32,301 individuals with available regional data (Supplementary Fig. 5c), only rs718475 and rs9956279 showed more significant association results compared to rs17700633 and rs17782313. However, direct genotyping of these SNPs, as well as conditional analysis, showed that these estimates of association were inflated and indicated that rs17782313 remains the most significantly associated variant for which imputed or typed data are currently available (Supplementary Note). Our findings cannot be explained by previously reported associations at rare variants such as V103I and I251L, which have only modest allelic association with rs17782313 ($r^2 = 0.001$; $D' = 0.48$ and $r^2 = 0.001$; $D' = 0.49$, respectively; Supplementary Note). Comprehensive resequencing and fine mapping will be required to unambiguously identify the causal variants, although these probably lie within a 190-kb recombination interval between the coding sequences of *PMAIP1* and *MC4R* (Supplementary Fig. 5a). *PMAIP1*, encoding the protein Noxa, is a putative *HIF1A* (hypoxia-inducible factor, alpha)-regulated proapoptotic gene¹⁵ and a relatively unlikely candidate for a role in weight regulation. In contrast, humans with rare functional mutations in *MC4R* sequence are known to develop severe early-onset obesity¹⁶, and analogous phenotypes are seen in murine models of *Mc4r* disruption¹⁷. This strong biological candidacy points to disruption of the transcriptional control of *MC4R* as the likely functional mechanism, even though the associated variants lie 109–188 kb downstream of the *MC4R* coding sequence. Low or absent *MC4R* expression in available expression QTL datasets (derived from lymphocytes^{18–20} and cerebral cortex²¹) precluded efforts to obtain evidence for *cis*-transcriptional phenotypes associated with rs17782313 or other nearby SNPs. There was no evidence for *cis* effects between any of the SNPs within this interval and expression of *PMAIP1* in lymphocytes (refs. 18–20 and E.T.D., unpublished data) or cerebral cortex²¹.

In the absence of direct functional evidence relating these variants to *MC4R* expression, we asked whether they recapitulated phenotypic patterns characteristic of rare, severe coding mutations in *MC4R*. These include early-onset obesity, increases in lean mass and bone mineral density and enhanced linear growth¹⁶. The rs17782313-related associations with adult height clearly indicate an impact on linear growth and are consistent with the phenotype seen in rare, severe coding mutations in *MC4R*. Furthermore, the

disproportionate BMI effect size in children (as compared to adults) is also consistent with the early-onset obesity characteristic of rare *MC4R* mutations. Neither such effect was observed for variants at *FTO8*. Children carrying the C allele at rs17782313 had modest increases in lean and bone mass, although these were similar to those observed for variants at *FTO* (Fig. 3, Supplementary Note and Supplementary Table 6 online).

These findings have implications for ongoing efforts to identify variants influencing common continuous traits such as weight and BMI. First, as with variants in *FTO*, common variants near *MC4R* make only a modest contribution to overall variance (~0.14% for adult BMI, and ~0.26% for fat mass at age 9). Of the other eight signals emerging from our meta-analysis of 16,876 individuals, there was clear evidence of replication of the SNP within *FTO* in additional ($n > 34,000$) samples, whereas SNPs rs10498767 (chromosome 6; replication $P = 0.009$; meta-analysis $P = 2.3 \times 10^{-5}$) and rs748192 (chromosome 3; replication $P = 0.05$; meta-analysis $P = 2.9 \times 10^{-5}$) showed some nominal evidence of replication; these signals, in particular, will benefit from further replication studies to establish their contribution to obesity-related phenotypes (Supplementary Table 7 online). Second, our finding provides a powerful example of overlap in the genetic determinants of monogenic and multifactorial forms of the same condition. Third, as with recent findings in diseases such as prostate cancer²² and type 2 diabetes²³⁻²⁶, our study suggests that variants mapping tens or hundreds of kilobases from adjacent coding sequence can have convincing phenotypic effects, presumably via remote effects on expression or translation. Finally, primary identification of these signals involved analysis of genome-wide association data from over 16,000 individuals, with further confirmation and initial characterization of the locus using over 90,000 samples. Although more substantial influences on weight and BMI may have been overlooked as a result of the incomplete coverage offered by contemporary genotyping arrays, especially for structural and low frequency variants, this study illustrates the scale of the endeavor that will be required for detection of additional variants influencing traits such as these.

METHODS

Genome-wide association samples

Five of the seven genome-wide scan studies were part of the Wellcome Trust Case Control Consortium (WTCCC) and have been described previously²⁶: the type 2 diabetes (WTCCC-T2D, $n = 1,924$), hypertension (WTCCC-HT, $n = 1,952$) and coronary artery disease (WTCCC-CAD, $n = 1,988$) case samples, and the UK Blood Service (WTCCC-UKBS, $n = 1,485$) and British 1958 Birth Cohort (WTCCC-BC58, $n = 1,479$) controls. The EPIC Obesity study comprises a representative sample ($n = 2,566$) nested within the EPIC-Norfolk Study²⁷, a population-based cohort study of 25,663 men and women of European descent aged 39–79 y recruited in Norfolk, UK between 1993 and 1997. Of these, 2,415 were included in the analyses. The CoLaus study²⁸ is a cross-sectional study of a random sample of 6,188 extensively phenotyped European men and women, aged 35–75 y, living in Lausanne, Switzerland, of whom 5,633 were included in the analyses. Height and weight were measured using standard anthropometric techniques in all studies, except for WTCCC-CAD and WTCCC-UKBS, for which height and weight were self reported. Basic descriptive characteristics for all genome-wide association studies are presented in Supplementary Table 1. All participants gave written informed consent, and project protocols were approved by the appropriate research ethics committees (Supplementary Note).

Genome-wide SNP genotyping and quality control

All seven genome-wide association (GWA) studies were genotyped using Affymetrix GeneChip 500K array set. Genotypes were called using the CHIAMO genotype calling software²⁶ for all studies, apart from the EPIC-Obesity and CoLaus studies, for which the BRLMM algorithm was used. Here, we report 359,062 SNPs that passed quality control in all four population-based studies (EPIC-Obesity, British 1958 Birth Cohort, CoLaus and UK Blood Services) and 344,883 SNPs that passed quality control in all seven (four population-based plus three case-series studies, WTCCC-HT, WTCCC-T2D and WTCCC-CAD). Each study had applied genotyping quality control criteria and done tests for population stratification: correction for population substructure was done by principal components in the CoLaus cohort (Supplementary Note). Each study had excluded individuals with evidence of non-European ancestry on the basis of genome-wide association data (for example, through multidimensional scaling)²⁶. The genomic inflation factor (λ) of each GWA study ranged from 1.009 to 1.024, indicating that the extent of residual population substructure is modest (Supplementary Fig. 3). In addition, none of the markers recently shown to be informative for geographical origin in the UK²⁶ associated with BMI (all $P > 0.01$). Additional details are available in Supplementary Note.

Replication genotyping

Initial replication of rs17782313 and rs17700633 was done in 13 collections ($n = 44,474$) for which DNA was available for genotyping (Supplementary Table 1 and Supplementary Note). We also sought replication in 18,878 individuals from eight additional samples for which rs17782313 and rs17700633 genotypes were available as part of ongoing GWA studies (Supplementary Table 1 and Supplementary Note). Further, we genotyped rs17782313 in samples from a French adult obesity case-control study ($n = 2,766$), from the Essen Obesity Family study ($n = 2,280$) and in three samples informative for childhood or adolescent BMI ($n = 9,654$). Genotypes for a fourth study of childhood BMI (Essen Obesity Study, $n = 929$) were available from their genome-wide association data. In total, 59,174 individuals were directly genotyped, and 16,807 individuals provided genotypes from their respective GWA scans (Supplementary Table 1 and Supplementary Note). Of the former, 37,819 samples were genotyped using TaqMan SNP genotyping assay (Applied Biosystems) according to the manufacturer's protocol, and 21,355 were genotyped by KBiosciences using a fluorescence-based competitive allele-specific PCR (KASPar). Duplicates were assayed with $>99\%$ concordance rates. Of the nine samples providing genotypes from genome-wide association data, five (SardiNIA, KORA, DGI T2D cases, DGI controls and Essen Obesity Study) were genotyped on the Affymetrix GeneChip 500K, and four were genotyped on the HumanHap300 (FUSION T2D cases, FUSION controls and PLCO), HumanHap240 (also PLCO) or HumanHap550 (NHS) Illumina arrays. As rs17782313 and rs17700633 were not present on the Illumina platforms, unobserved genotypes were imputed with high accuracy (predicted $r^2 = 0.89$) using MACH. Of the SardiNIA population, 1,412 individuals were genotyped for the Affymetrix GeneChip 500K; the remaining individuals were genotyped with the Affymetrix Mapping 100K array, and these marker data were used to impute genotypes at SNPs in the '500K' set for the remaining 2,893 individuals not typed with this technology^{9,29}. Residual relatedness in the SardiNIA and FUSION samples was dealt with statistically (see below). Overall call rates across studies averaged 98.1%, and there were no departures from Hardy-Weinberg equilibrium ($P > 0.01$ in each study) (Supplementary Table 3 and Supplementary Note). Informed consent and ethical approval was obtained for all studies. Additional details are available in Supplementary Note.

Genome-wide association analyses and meta-analyses

BMI was \log_{10} -transformed and standardized to Z scores before analyses. EPIC-Obesity, British BC58 and CoLaus calculated sex- and age-specific Z scores, and WTCCC-UKBS,

WTCCC-T2D, WTCCC-HT and WTCCC-CAD used sex-specific Z scores, adjusting for age in the analyses. Each GWA study performed linear regression (additive model) to test for association between each SNP and BMI Z score using PLINK (WTCCC-T2D, WTCCC-UKBS, WTCCC-CAD, CoLaus), SAS/Genetics 9.1 (EPIC-Obesity Study), STATA 8.1 (British 1958 BC) or R (WTCCC-HT). Subsequently, summary statistics of the SNP-BMI associations of each GWA study were combined in meta-analyses using the inverse variance-weighted method with a fixed-effects model³⁰. Meta-analyses were done by combining the four population-based studies (EPIC-Obesity, British 1958 BC, CoLaus and WTCCC/UKBS) as well as all seven GWA studies. Variants that showed marked evidence of heterogeneity ($P < 0.10$) across the studies were not considered for replication. Meta-analyses were done with SAS 9.1. The overall results of the meta-analysis were visualized using PLINK (Supplementary Fig. 2), and the top hits from our scan and the replication data are presented in Supplementary Table 2. Additional details are available Supplementary Note.

Replication in adult population-based studies and case series and meta-analyses

Replication analyses were also based on sex-specific \log_{10} BMI Z scores, using linear regression (additive model) while adjusting for age (and other appropriate covariates such as 'center'). Analyses were also done with BMI \log_{10} -transformed (but not standardized) for presentation of geometric means and 95% CIs (Table 1 and Supplementary Table 4). For relevant analyses, height was standardized to sex-specific Z scores, whereas weight was \log_{10} -transformed before standardizing. Again, association was tested using linear regression assuming an additive model, adjusted for age and other appropriate covariates. Case-control analyses (for obesity and over-weight) within population-based samples were done by comparing overweight (BMI ≥ 25 kg m⁻²) and obese (BMI ≥ 30 kg m⁻²) to normal-weight (BMI < 25 kg m⁻²) individuals. Logistic regression was used to test for association between genotype and overweight/obesity, adjusted for age and sex. Similar methods were used to test for association with case status in the French adult obesity case-control study. All analyses were also done for men and women separately. In samples featuring appreciable numbers of individuals with significant degrees of relatedness (SardinIA, FUSION), residual kinship was accounted for using a score test as previously described²⁹. Analyses were done in Stata/s.e.m. 9.2 for Windows, PLINK, SPSS 14.1 software and SAS/Genetics 9.1. The summary statistics (beta (or OR) and s.e.m. (or 95% CI)) for each of the separate studies were combined in meta-analyses using the inverse variance-weighted method assuming a fixed-effects model, conducted in SAS 9.1. To provide approximate effect-size estimates expressed in BMI units (kg m⁻²), we translated from the Z -score unit differences using the s.d. of raw BMI (a mean s.d. of 4.5 kg m⁻² in the population-based cohorts). This method was also applied to provide approximate effect size estimates for reporting height (mean s.d. of 7 cm) and weight (mean s.d. of 13.4 kg) data. Conditional analyses were done to investigate the dependencies between the BMI effects at rs17782313 and rs17700633: we tested for association between rs17700633 and BMI (sex-specific \log_{10} -transformed), while adjusting for age and rs17782313 (and vice versa). Summary statistics were, as before, meta-analyzed using the inverse variance-weighted method with Stata 9.2.

Analyses in childhood studies

The population-based ALSPAC study was used to test for association between rs17782313 and measures of anthropometry and body composition. Weight and height during the first 42 months of life were expressed as SDS relative to British 1990 scales. Birth weight was standardized by sex and gestational age. BMI and weight between age 7 and 11, as well as body fat percentage, DXA fat mass, DXA lean mass and DXA bone mass at age 9 were \log_{10} -transformed, whereas height remained untransformed before calculation of sex-

specific *Z* scores. Linear regression (additive model) was used to test for association between rs17782313 genotypes and these anthropometric measures. Analyses were done in Stata/s.e.m. 9.2 for Windows. In the three childhood or adolescent case-control series, we used logistic regression to test for association with severe obesity. Although the three studies used slightly different definitions of severe obesity (3 s.d. above population mean and age of onset < 10 y in SCOOP-UK, BMI > 95th percentile in the Essen Obesity study, and BMI 97th percentile in the French Childhood Obesity study), there was no detectable heterogeneity between the estimates derived, and the summary statistics (ORs and 95% CIs) of each study were combined in meta-analyses as described above. In a separate set of 660 nuclear families of the Essen Obesity Family study, we used a pedigree transmission disequilibrium test (PDT average) to test for overtransmission of the rs17782313 C allele to the obese offspring. In addition, we determined genotype relative risks (GRR), which are robust against deviations from Hardy-Weinberg equilibrium.

Additional consortium authors are as follows:

The Prostate, Lung, Colorectal, and Ovarian (PLCO) Cancer Screening Trial: Kevin B Jacobs, Stephen J Chanock & Richard B Hayes

KORA: Claudia Lamina, Christian Gieger, Thomas Illig, Thomas Meitinger & H-Erich Wichmann

Nurses' Health Study: Peter Kraft, Susan E Hankinson, David J Hunter & Frank B Hu

Diabetes Genetics Initiative: Helen N Lyon, Benjamin F Voight, Martin Ridderstrale & Leif Groop

The SardinIA Study: Paul Scheet, Serena Sanna, Goncalo R Abecasis, Giuseppe Albai, Ramaiah Nagaraja & David Schlessinger

FUSION: Anne U Jackson, Jaakko Tuomilehto, Francis S Collins, Michael Boehnke & Karen L Mohlke

Supplementary Material

Refer to Web version on PubMed Central for supplementary material.

Acknowledgments

We acknowledge support of the UK Medical Research Council, the Wellcome Trust, Diabetes UK, Cancer Research United Kingdom, BDA Research, UK National Health Service Research and Development, the European Commission, the Academy of Finland, the British Heart Foundation, the National Institutes of Health, the Novartis Institutes for BioMedical Research, GlaxoSmithKline and the German National Genome Research Net. Personal support was provided by NIDDK (E.K.S., H.N.L., J.N.H., F.S.C.), the Wellcome Trust (A.T.H., E.Z.), Diabetes UK (R.M.F.), the Throne-Holst Foundation (C.M.L.), the Vandervell Foundation (M.N.W.), American Diabetes Association (C.J.W.), Unilever Corporate Research (S.L.) and the British Heart foundation (N.J.S).

References

1. Jackson RS, et al. Obesity and impaired prohormone processing associated with mutations in the human prohormone convertase 1 gene. *Nat. Genet.* 1997; 16:303–306. [PubMed: 9207799]
2. Montague CT, et al. Congenital leptin deficiency is associated with severe early-onset obesity in humans. *Nature.* 1997; 387:903–908. [PubMed: 9202122]
3. Clement K, et al. A mutation in the human leptin receptor gene causes obesity and pituitary dysfunction. *Nature.* 1998; 392:398–401. [PubMed: 9537324]

4. Krude H, et al. Severe early-onset obesity, adrenal insufficiency and red hair pigmentation caused by *POMC* mutations in humans. *Nat. Genet.* 1998; 19:155–157. [PubMed: 9620771]
5. Vaisse C, Clement K, Guy-Grand B, Froguel P. A frameshift mutation in human *MC4R* is associated with a dominant form of obesity. *Nat. Genet.* 1998; 20:113–114. [PubMed: 9771699]
6. Yeo GSH, et al. A frameshift mutation in *MC4R* associated with dominantly inherited human obesity. *Nat. Genet.* 1998; 20:111–112. [PubMed: 9771698]
7. Frayling TM, et al. A common variant in the *FTO* gene is associated with body mass index and predisposes to childhood and adult obesity. *Science.* 2007; 316:889–894. [PubMed: 17434869]
8. Dina C, et al. Variation in *FTO* contributes to childhood obesity and severe adult obesity. *Nat. Genet.* 2007; 39:724–726. [PubMed: 17496892]
9. Scuteri A, et al. Genome-wide association scan shows genetic variants in the *FTO* gene are associated with obesity-related traits. *PLoS Genet.* 2007; 3:e115. [PubMed: 17658951]
10. Farooqi IS, et al. Dominant and recessive inheritance of morbid obesity associated with melanocortin 4 receptor deficiency. *J. Clin. Invest.* 2000; 106:271–279. [PubMed: 10903343]
11. Marchini J, Howie B, Myers S, McVean G, Donnelly P. A new multipoint method for genome-wide association studies by imputation of genotypes. *Nat. Genet.* 2007; 39:906–913. [PubMed: 17572673]
12. Young EH, et al. The V103I polymorphism of the *MC4R* gene and obesity: population based studies and meta-analysis of 29,563 individuals. *Int. J. Obes.* 2007; 31:1437–1441.
13. Stutzmann F, et al. Non-synonymous polymorphisms in melanocortin-4 receptor protect against obesity: the two facets of a Janus obesity gene. *Hum. Mol. Genet.* 2007; 16:1837–1844. [PubMed: 17519222]
14. Geller F, et al. Melanocortin 4 receptor gene variant I103 is negatively associated with obesity. *Am. J. Hum. Genet.* 2004; 74:572–581. [PubMed: 14973783]
15. Kim JY, Ahn HJ, Ryu JH, Suk K, Park JH. BH3-only protein Noxa is a mediator of hypoxic cell death induced by hypoxia-inducible factor 1 α . *J. Exp. Med.* 2004; 199:113–124. [PubMed: 14699081]
16. Farooqi IS, et al. Clinical spectrum of obesity and mutations in the melanocortin 4 receptor gene. *N. Engl. J. Med.* 2003; 348:1085–1095. [PubMed: 12646665]
17. Huszar D, et al. Targeted disruption of the melanocortin-4 receptor results in obesity in mice. *Cell.* 1997; 88:131–141. [PubMed: 9019399]
18. Dixon AL, et al. A genome-wide association study of global gene expression. *Nat. Genet.* 2007; 39:1202–1207. [PubMed: 17873877]
19. Stranger BE, et al. Population genomics of human gene expression. *Nat. Genet.* 2007; 39:1217–1224. [PubMed: 17873874]
20. Goring HHH, et al. Discovery of expression QTLs using large-scale transcriptional profiling in human lymphocytes. *Nat. Genet.* 2007; 39:1208–1216. [PubMed: 17873875]
21. Myers AJ, et al. A survey of genetic human cortical gene expression. *Nat. Genet.* 2007; 39:1494–1499. [PubMed: 17982457]
22. Gudmundsson J, et al. Genome-wide association study identifies a second prostate cancer susceptibility variant at 8q24. *Nat. Genet.* 2007; 39:631–637. [PubMed: 17401366]
23. Zeggini E, et al. Replication of genome-wide association signals in UK samples reveals risk loci for type 2 diabetes. *Science.* 2007; 316:1336–1341. [PubMed: 17463249]
24. Scott LJ, et al. A genome-wide association study of type 2 diabetes in Finns detects multiple susceptibility variants. *Science.* 2007; 316:1341–1345. [PubMed: 17463248]
25. Diabetes Genetics Initiative of Broad Institute of Harvard and MIT, Lund University and Novartis Institutes of BioMedical Research. et al. Genome-wide association analysis identifies loci for type 2 diabetes and triglyceride levels. *Science.* 2007; 316:1331–1336. [PubMed: 17463246]
26. The Wellcome Trust Case Control Consortium. Genome-wide association study of 14,000 cases of seven common diseases and 3,000 shared controls. *Nature.* 2007; 447:661–678. [PubMed: 17554300]
27. Day NE, et al. EPIC-Norfolk: study design and characteristics of the cohort. *European Prospective Investigation of Cancer. Br. J. Cancer.* 1999; 80:95–103. [PubMed: 10466767]

28. Vollenweider P, et al. Health examination survey of the Lausanne population: first results of the CoLaus study. *Rev. Med. Suisse*. 2006; 2:2528–2530. [PubMed: 17168040]
29. Chen WM, Abecasis G. Family-based association tests for genomewide association scans. *Am. J. Hum. Genet.* 2007; 81:913–926. [PubMed: 17924335]
30. Sutton, A.; Abrams, KR.; Jones, DR.; Sheldon, TA.; Song, F. *Methods for Meta-Analysis in Medical Research*. John Wiley & Sons; Chichester, UK: 2000.

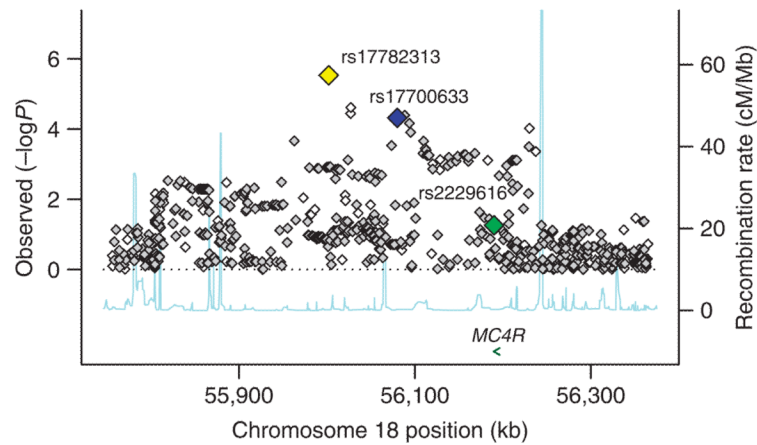


Figure 1.

Regional plot of chromosome 18q21 (55,700–56,400 kb), showing the association signals for obesity for the meta-analysis of all 16,876 samples with genome-wide association scans. On the x axis is chromosomal position in kilobases (as NCBI build 35 coordinates), and on the y axis is the P value for association (expressed as $-\log_{10} P$ value). The imputed data signals are shown in gray diamonds and the directly genotyped signals in white. Estimated recombination rates (taken from HapMap) are plotted (light blue) to reflect the local LD structure around the associated SNP. Gene annotations were taken from the University of California Santa Cruz genome browser. The yellow diamond corresponds to the directly genotyped SNP in this region, which shows the strongest association with obesity (rs17782313, $P = 2.9 \times 10^{-6}$), the lower blue diamond represents the result from rs17700633 ($P = 4.8 \times 10^{-5}$, directly genotyped), and the green diamond represents the result from rs2229616 (or V103I, $P = 0.056$, imputed). LD structure across the interval, as calculated by D' , and r^2 measures are shown in Supplementary Figure 5a.

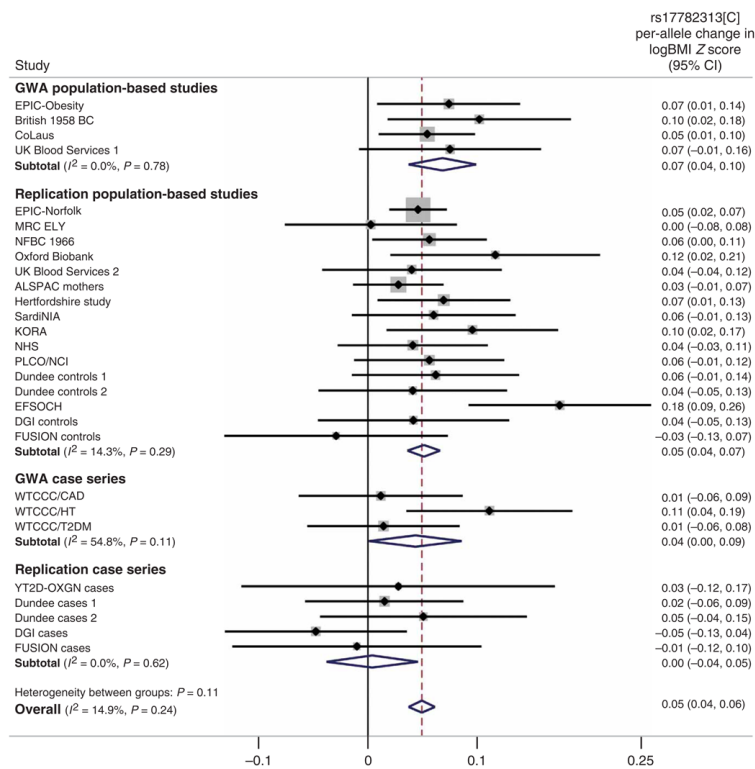


Figure 2. Meta-analysis plot showing the rs17782313[C] per-allele effect size on BMI in 77,228 adults, expressed in log₁₀BMI sex-specific Z-score units.

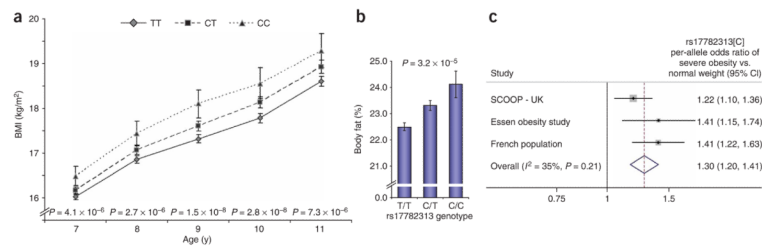


Figure 3.

Effects of rs17782313 on regulation of weight in early life. **(a)** Longitudinal data for BMI at age 7–11 for children in the ALSPAC study by rs17782313 genotypes. Mean values represented as geometric means and back-transformed 95% confidence intervals. *P* values represent significance of the additive model (per-allele effect) of log₁₀-transformed data, adjusted for sex. **(b)** Association between rs17782313 and body fat percentage in 9-year-old children from the ALSPAC study. Mean values represented as geometric means and back-transformed 95% confidence intervals. *P* values represent significance of the additive model (per-allele effect) of log₁₀-transformed data, adjusted for sex. **(c)** Meta-analysis plot showing the rs17782313[C] per-allele effect size on risk of severe obesity in childhood and adolescence in 10,583 children from three studies.

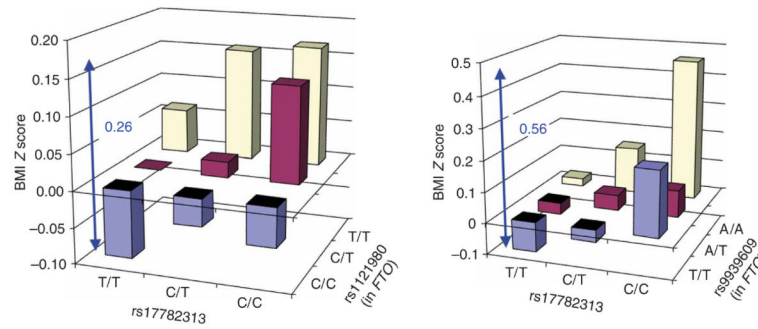


Figure 4.

Association between the combined rs17782313 and *FTO* genotypes and BMI in adults (EPIC-Norfolk, $n = 15,622$) and children (ALSPAC age 7 years, $n = 5,779$). BMI is expressed in \log_{10} BMI Z-score units adjusted for age (in adults) and sex. Both SNPs have a significant additive effect on BMI in adults (rs17782313, $P = 4.0 \times 10^{-4}$; rs1121980, $P = 2.0 \times 10^{-14}$) and in children (rs17782313, $P = 8.0 \times 10^{-6}$; rs9939609, $P = 7.6 \times 10^{-5}$).

Table 1
Association between rs17782313 and BMI in populations with genome-wide association data and in replication populations

	<i>n</i>	MAF (%)			<i>P</i>	
		T/T	C/T	C/C		
GWA population-based studies						
EPIC-Obesity study	2,416	24	26.0 (25.9–26.2)	26.3 (26.1–26.5)	26.5 (26.0–27.1)	0.029
CoLaus	5,631	24	25.4 (25.3–25.6)	25.6 (25.4–25.8)	25.8 (25.3–26.3)	0.016
British 1958 Birth Cohort	1,479	23	26.9 (26.6–27.2)	27.2 (26.8–27.6)	28.0 (26.8–29.2)	0.017
WTCCC/UK Blood Services 1	1,456	24	25.7 (25.5–26.0)	26.1 (25.7–26.4)	26.3 (25.4–27.1)	0.08
Replication population-based studies						
EPIC-Norfolk	15,834	23	26.0 (25.9–26.0)	26.1 (26.0–26.2)	26.3 (26.1–26.5)	0.0006
MRC-Ely	1,696	25	26.8 (26.6–27.1)	26.9 (26.7–27.3)	26.6 (25.8–27.4)	0.95
Northern Finnish Birth Cohort of 1966	4,830	18	24.3 (24.2–24.5)	24.5 (24.3–24.7)	24.9 (24.2–25.5)	0.034
Oxford Biobank	1,165	24	25.6 (25.3–25.9)	26.0 (25.6–26.4)	26.7 (25.7–27.7)	0.018
UK Blood Services 2	1,562	24	25.9 (25.6–26.1)	25.9 (25.6–26.2)	26.4 (25.6–27.3)	0.34
ALSPAC Mothers	6,264	24	22.7 (22.6–22.8)	22.7 (22.6–22.9)	22.9 (22.6–23.3)	0.19
Hertfordshire study	2,842	24	26.9 (26.7–27.1)	27.3 (27.1–27.5)	27.2 (26.6–27.8)	0.03
Sardinia	1,412	12	24.5 (24.2–24.9)	24.7 (24.1–25.3)	23.4 (21.7–25.2)	0.11
KORA	1,642	26	26.9 (26.6–27.1)	27.2 (26.9–27.5)	27.6 (26.9–28.3)	0.02
NHS	2,265	24	24.6 (24.4–24.8)	25.1 (24.8–25.4)	24.1 (23.5–24.8)	0.24
PLCO	2,238	24	27.2 (27.0–27.4)	27.2 (27.0–27.5)	28.0 (27.3–28.7)	0.11

	<i>n</i>	MAF (%)	T/T	C/T	C/C	<i>P</i> ^b
			Mean BMI ^a (95% CI)	Mean BMI ^a (95% CI)	Mean BMI ^a (95% CI)	
Dundee controls 1	1,913	22	26.2 (26.0–26.5)	26.4 (26.1–26.7)	27.0 (26.1–27.9)	0.11
Dundee controls 2	1,501	22	26.5 (26.2–26.8)	26.8 (26.4–27.2)	26.5 (25.6–27.5)	0.35
EFSOCH	1,639	23	24.6 (24.3–24.8)	25.3 (24.9–25.6)	25.9 (25.0–26.8)	0.00004
DGI controls	1,503	22	26.3 (26.1–26.6)	26.6 (26.3–26.9)	26.3 (25.5–27.2)	0.35
FUSION controls	1,291	19	26.8 (26.5–27.0)	26.8 (26.4–27.2)	26.4 (25.5–27.3)	0.58
Meta-analyses of population-based studies ($I^2 = 2.5\%$, <i>P</i> for heterogeneity = 0.43)						
GWA case series						
WTCCC/T2D cases	1,923	26	30.6 (30.3–31.0)	30.7 (30.3–31.1)	30.8 (29.9–31.8)	0.69
WTCCC/CAD cases	1,974	25	27.3 (27.1–27.6)	27.2 (26.9–27.5)	27.7 (27.0–28.5)	0.76
WTCCC/HT cases	1,947	23	27.0 (26.8–27.2)	27.6 (27.3–27.9)	27.5 (26.8–28.3)	0.004
Replication case series						
Dundee cases 1	1,909	24	30.9 (30.6–31.3)	30.9 (30.5–31.3)	31.7 (30.6–32.8)	0.68
Dundee cases 2	1,067	24	31.0 (30.6–31.5)	31.5 (30.9–32.1)	31.3 (29.9–32.7)	0.29
YT2D–OXGN cases	617	25	31.4 (30.7–32.1)	31.7 (30.9–32.5)	31.4 (29.3–33.6)	0.71
DGI cases	1,543	23	28.3 (28.0–28.6)	28.0 (27.7–28.4)	28.0 (27.1–29.0)	0.26
FUSION cases	1,094	18	29.8 (29.4–30.1)	30.1 (29.6–30.6)	29.0 (27.4–30.7)	0.86
Meta-analyses of case series ($I^2 = 20\%$, <i>P</i> for heterogeneity = 0.27)						
Meta-analyses of all studies ($I^2 = 15\%$, <i>P</i> for heterogeneity = 0.24)						
						0.11
						2.8×10^{-15}

^aBMI is presented as geometric means and log-inverse 95% confidence intervals.

^b*P* values represent significance of the additive model (per-allele effect) with standardized log₁₀-transformed BMI, adjusted for age.