

Serveur Académique Lausannois SERVAL serval.unil.ch

Author Manuscript

Faculty of Biology and Medicine Publication

This paper has been peer-reviewed but does not include the final publisher proof-corrections or journal pagination.

Published in final edited form as:

Title: Microfluidic-based immunohistochemistry for breast cancer diagnosis: a comparative clinical study.

Authors: Aimi F, Procopio MG, Alvarez Flores MT, Brouland JP, Piazzon N, Brajkovic S, Dupouy DG, Gijs M, de Leval L

Journal: Virchows Archiv : an international journal of pathology

Year: 2019 Jul 2

DOI: [10.1007/s00428-019-02616-7](https://doi.org/10.1007/s00428-019-02616-7)

In the absence of a copyright statement, users should assume that standard copyright protection applies, unless the article contains an explicit statement to the contrary. In case of doubt, contact the journal publisher to verify the copyright status of an article.

This is a post-peer-review, pre-copyedit version of an article published in Virchows Archiv.

The final authenticated version is available online at <http://dx.doi.org/10.1007/s00428-019-02616-7>.

Microfluidic-based Immunohistochemistry for Breast Cancer Diagnosis: a Comparative Clinical Study

Aimi Fabio, PhD¹, Procopio Maria-Giuseppina, PhD³, Alvarez Flores Maria Teresa, MD², Brouland Jean-Philippe, MD², Piazzon Nathalie, PhD², Brajkovic Saska, PhD⁴, Dupouy Diego Gabriel, PhD⁴, Gijs Martin, Prof¹ and de Leval Laurence, Prof²

Affiliation

1. Laboratory of Microsystems, Ecole Polytechnique Fédérale de Lausanne, CH-1015 Lausanne, Switzerland
2. Institute of Pathology, Centre Hospitalier Universitaire Vaudois, CH-1011 Lausanne, Switzerland
3. Institute of Pathology and Molecular Pathology, University Hospital Zurich, CH-8091 Zurich, Switzerland
4. Lunaphore Technologies SA, EPFL Innovation Park-Building C, CH-1015 Lausanne, Switzerland

Corresponding author

Brajkovic Saska, PhD: Lunaphore Technologies SA, EPFL Innovation Park, Building C, CH-1015 Lausanne, Switzerland. Phone: +41 (0) 21 353 58 11. Email: saska.brajkovic@lunaphore.com

ACKNOWLEDGMENTS

The authors thank Noguet Véronique and Prod'Hom Nicole for performing BenchMark stainings, Cloé Bregnard and Monica Esteves for performing FISH analysis and Jean-Daniel Roman for the support provided with digital imaging

ABSTRACT

Breast cancer is a highly heterogeneous disease. The efficacy of tailored therapeutic strategies relies on the precise detection of diagnostic biomarkers by immunohistochemistry (IHC). Therefore, considering the increasing incidence of breast cancer cases, a concomitantly time-efficient and accurate diagnosis is clinically highly relevant.

Microfluidics is a promising innovative technology in the field of tissue diagnostic, enabling for rapid, reliable and automated immunostaining. We previously reported the microfluidic-based HER2 (human epidermal growth factor receptor 2) detection in breast carcinomas to greatly correlate with the *HER2* gene amplification level.

Here, we aimed to develop a panel of microfluidic-based IHC protocols for prognostic and therapeutic markers routinely assessed for breast cancer diagnosis, namely HER2, estrogen/progesterone receptor (ER/PR) and Ki67 proliferation factor.

The microfluidic IHC protocol for each marker was optimized to reach high staining quality comparable to the standard procedure, while concomitantly shortening the staining time to 16 minutes - excluding deparaffinization and antigen retrieval step - with a turnaround time reduction up to 7 folds.

Comparison of the diagnostic score on 50 formaldehyde-fixed paraffin-embedded breast tumor resections by microfluidic versus standard staining showed high concordance (overall agreement: HER2 94%, ER 95.6%, PR 93.6%, Ki67 93.7%) and strong correlation (ρ coefficient: ER 0.89, PR 0.88, ki67 0.87; $p < 0.0001$) for all the analyzed markers. Importantly, *HER2* genetic reflex test for all discordant cases confirmed the scores obtained by the microfluidic technique.

Overall, the microfluidic-based IHC represents a clinically validated equivalent approach to the standard chromogenic staining for rapid, accurate and automated breast cancer diagnosis.

Keywords

microfluidic tissue processor, immunohistochemistry, breast cancer

INTRODUCTION

Breast cancer is the most commonly diagnosed tumor and leading cause of cancer death in women world-wide [1], accounting for almost one quarter of female cancer cases [2].

In combination with histological evaluation of standard hematoxylin-eosin staining, immunohistochemistry (IHC) of formaldehyde-fixed paraffin-embedded (FFPE) tissue biopsies has become an essential tool in oncologic pathology to guide personalized clinical management of patients. To analyze any putative breast cancer tissue, the expression of prognostic and therapeutic markers is routinely assessed, including the human epidermal growth factor receptor 2 (HER2), estrogen receptor (ER), progesterone receptor (PR) and proliferation factor Ki67 [3]–[5]. The efficacy of the therapeutic strategies relies on the precise detection and quantification of these diagnostic markers. Therefore, considering the increasing incidence of breast cancer cases, a concomitantly time-efficient and accurate assessment of biomarkers on tumor samples is of high clinical relevance.

Recently, we developed a microfluidic tissue processor (MTP) device and used to perform IHC and immunofluorescence (IF) staining on FFPE and frozen histological samples [6]–[8]. The microfluidic-based device is a pressure-driven system that allows reagents to be delivered on a biological sample via the fast-fluidic exchange (FFEX) technology, enabling for a precisely controlled immune-reaction to take place in an extremely short incubation time. In fact, the microfluidic IHC staining on frozen samples lasts less than 12 minutes [8]. Furthermore, the employment of the microfluidic-based device resulted in a better repartition of HER2 positive/negative breast carcinoma cases, thus reducing the number of equivocal HER2 scores by 90% and allowing for *HER2* gene copy number prediction [6], [7]. Here, we aimed to develop and validate a panel of microfluidic IHC protocols for the breast cancer diagnostic markers HER2, ER, PR and Ki67. To this purpose, we performed a comparative clinical study using 50 successive eligible FFPE breast cancer resections to assess whether (i) the clinical diagnostic score and (ii) analytical performance achieved by the microfluidic staining device were equivalent to a routinely used BenchMark ULTRA automated stainer.

MATERIAL and METHODS

Breast cancer tissues

A total of 50 FFPE breast tumor resections retrieved from the files of Pathology Institute of the University Hospital of Lausanne (CHUV) were included in this study (ethical committee approval protocol number 511-12). Successive eligible cases were collected from January 2016 without any pre-selection criteria for biomarkers grading. Tissue specimens were anonymized before being stained and blindly scored by a pathologist. The standard IHC and FISH assay were repeated for the purpose of the study, rather than reanalyzing the slides prepared during the diagnostic procedure.

Tissue slide pre-processing for MTP-based IHC

Tissue sections were dried for 10 minutes at 65°C, dewaxed for 10 minutes 30 seconds in HistoClear (National Diagnostic, HS200) and rehydrated by consecutive washes in ethanol: 100% for 30 seconds, 100%, 95%, 70% and 40% vol/vol for 10 seconds and then placed in MilliQ water. Heat-induced antigen retrieval was performed at 95°C for 40 minutes at pH6 (Dako, pH6, S1699) for CK and Ki67 staining, and at pH9 (Dako, pH9, S2367) for ER, HER2 and PR staining. After cooling down to room temperature for 20 minutes, the samples were transferred in TBS before being placed on the microfluidic device.

Microfluidic-based IHC staining

The microfluidic device prototype used in this study was designed and manufactured by Lunaphore Technologies SA. The principle of operation of the microfluidic device employed for the IHC stainings is described in **Fig. 1a**. Optimized incubation time for all protocol step and primary antibody dilutions for the MTP-device are reported in **Fig. 1b**. MTP-based stainings were performed using custom-made HRP-conjugated secondary antibodies and DAB chromogenic substrates. Counterstaining was performed with 20% Hematoxylin solution (Thermo Scientific, Gill3, 72604) in MilliQ water. All protocol steps were performed at 37°C.

Primary antibodies

The primary antibody used in the study are as follows: mouse anti-human cytokeratin (CK) clone AE1/AE3 (Dako M3515, 1.07 mg/L); mouse anti-human ER clone 6F11 (Novocastra NCL-L-ER-6F11,

1.50 mg/L); rabbit anti-human HER2 clone 4B5 (Ventana 709-2991, ready to use); mouse anti-human Ki67 clone MIB-1 (Dako M7240, 0.92 mg/L); mouse anti-human PR clone PgR-636 (Dako M3569, 0.81 mg/L). Primary antibodies were diluted in TBS 0.1% Tween (Fisher Bio-Reagents, BP337); working dilutions are reported in **Fig. 1b**. Same primary antibody batches were used both for standard and MTP-based stainings. The alternative primary antibody clones used for ER and PR standard staining on discordant cases were rabbit anti-human ER clone SP1 (Ventana 790-4325, ready to use) and PR clone 1E2 (Ventana 790-4296, ready to use).

Standard IHC pre-processing and staining

Standard IHC assays were performed on a BenchMark ULTRA automated stainer (Roche Ventana) according to manufacturer recommendations. Detailed protocols are provided in **Suppl. Material and Methods**.

Tissue slide IHC post-processing and image acquisition

The stained slides were rinsed with MilliQ water and dehydrated in ethanol 95% - ethanol absolute (Reactolab SA, 99570) – xylol (VWR Chemicals, 28973.363) baths (3x5 seconds each step). The slides were then mounted with Glas Mounting Medium (Sakura, Tissue-Tek, 1408) and coverslip 24x50 mm (VWR, ECN 631-1574) by using Tissue-Tek Glas g2-E2 (Sakura Finetek, 6502). The images were acquired with the digital slide scanner NanoZoomer S60 (Hamamatsu, C13210-01) and visualized with the Leica Biosystems Version 4.0.7 (Leica Biosystems).

IHC quality parameters, diagnostic scoring and exclusion criteria

The quality of IHC staining was evaluated on each slide, as perceived by an experienced pathologist, based on the following parameters: intensity, background, specificity, contrast, sharpness, morphology and counterstaining. Intensity and sharpness were not evaluated in negative-scored samples. For each parameter a mark from 1 (insufficient) to 5 (excellent) was assigned.

CK was scored in a binary way as positive or negative. The diagnostic scores for ER/PR, HER2 and Ki67 were evaluated according to 2010 ASCO/CAP guideline [9], 2013 ASCO/CAP guideline [10] and 2015

St. Gallen Conference recommendations [11], respectively. Detailed IHC quality and scoring parameters are provided in **Suppl. Material and Methods**.

Negative cases without internal positive control were considered technically unsatisfactory and discarded from the analysis (ER n=1, Ki67 n=1). Tissue sections that were ruined during the pre- or post-staining procedure resulting in unreadable stained cases were also excluded from the scoring comparison (CK n=1, PR n=3, Ki67 n=1). All excluded cases are shown as strikethrough boxes in **Suppl.**

Table 1.

Discordant scores

The diagnostic score was considered to be discordant when being inversely classified by the two employed staining techniques as positive/negative for ER and PR (cut-off 1% positive tumor nuclei), or high/low for Ki67 (cut-off 15% positive tumor nuclei). HER2 status was considered discordant when differently classified as negative, equivocal or positive according to the scoring criteria defined above. HER2 discordant cases (n=3) were further analyzed by FISH reflex test, according to the 2013 ASCO/CAP guideline recommendations [10]. Discordant cases for ER (n=2), PR (n=5) and Ki67 (n=8) were blindly reviewed by a pathologist. For ER and PR, the cases remained discordant after rescoring where stained with an alternative primary antibody clone by the standard automated stainer; however, the resulting score was not used to redefine the overall agreement or correlation coefficient. Discordant diagnostic score values are shown in bold case in **Suppl. Table 1**.

Dual-probe *HER2/CEP17* FISH

FISH assay was performed as previously reported [12] using the *HER2/CEP17* dual-labeled DNA probe (PathVysion *HER2* DNA Probe Kit, Abbott Molecular). Images were acquired using the Zeiss fluorescent microscope at high resolution (63x objective, 1.4 numerical aperture). Results were interpreted according to 2013 ASCO/CAP recommendations [10].

RESULTS

Optimization of the IHC protocol for microfluidic-based staining of breast cancer diagnostic markers

The microfluidic device is an automated pressure-driven system allowing for fast and uniform delivery of reagents on the tissue section, thus resulting in a precisely controlled immune-reaction within an extremely short incubation time enabled by the fast-fluidic exchange technology (**Fig. 1a**).

Microfluidic IHC for pan-cytokeratin (CK), commonly used to identify tumor epithelial cells, was firstly developed as a positive control marker on FFPE breast carcinoma cases (**Suppl. Fig. S1**). Microfluidic staining protocol for the diagnostic markers HER2, ER, PR and Ki67 was subsequently optimized to reach a detection level comparable to the reference staining obtained from a routinely used standard automated stainer (**Suppl. Fig. S2**). In parallel, a negative control was performed by using the same staining protocols without adding the primary antibody. The obtained stainings displayed the absence of chromogenic signal and adequate counterstaining (**Suppl. Fig. S2 and S3**). The optimized staining conditions for all markers assessed in this study are reported in **Fig. 1b**, in comparison to routinely used standard protocols. Staining time for the optimized microfluidic protocol was shortened to 16 minutes, resulting in 5 to 7 folds decrease in time with respect to the BenchMark ULTRA protocols (**Fig. 1b**) – not including the tissue section deparaffinization and antigen retrieval pre-processing steps.

Reproducibility of the microfluidic-based IHC

To assess the reproducibility of the IHC protocol performed on the microfluidic device, a day-to-day repeatability test was run on three different days (with unchanged operator and location) for (i) CK using 3 different breast carcinomas - in parallel with negative controls without primary antibody (**Suppl. Fig. S4a**), and (ii) HER2, PR and Ki67 on two different tissues (**Suppl. Fig. S4b**). The multiple IHC assays performed on different days resulted in comparable pattern of expression and quality of staining on all tissue replicates for the assessed markers. Furthermore, to evaluate the consistency of the microfluidic staining for diagnostic purposes, the HER2, PR and Ki-67 stained tissues were clinically scored. HER2 score for both samples (0 and 3+) was identical on the three replicates; one sample triplicates showed equal score for PR (80%) and Ki67 (10-15%), while the other sample varying score

(PR: 100-95-95%; Ki67: 40-35-30%), with a standard deviation of 3 (coefficient of variation, CV: 0.03) and 5% (CV: 0.14), respectively.

Analytical and Diagnostic Performance Comparison

To assess the clinical reliability of the stainings performed by the microfluidic device, 50 FFPE surgically resected invasive breast carcinoma specimens were stained for CK, HER2, ER, PR, Ki67 and subsequently scored for both analytical and diagnostic performance, in comparison to a standard automated stainer routinely used in tumor diagnostics (**Fig. 1c**). The optimized protocols, as defined in the above paragraph, were employed for the microfluidic-based assays. The brown tone of the microfluidic staining shifted towards a reddish brown, whereas the standard staining towards brown-black, possibly due to the usage of the copper sulfate signal enhancer on the BenchMark-stained samples. Yet, the developed microfluidic protocol achieved high qualitative performance equivalent to the routine assay for all assessed markers (**Suppl. Fig. S5**).

As expected for breast carcinomas, all stained samples with both the MTP and BenchMark devices were cytokeratin positive (**Suppl. Table 1**).

HER2. Employment of the microfluidic device resulted in a high-quality HER2 staining comparable to the standard assay (**Fig. 2a-b**) for all considered parameters as shown in **Suppl. Fig. S5**. Staining results for HER2 IHC were evaluated according to the 2013 ASCO/CAP guideline recommendations, with HER2 status being classified as positive (3+ score), equivocal (2+ score) or negative (1+ and 0 score). Comparison of HER2 diagnostic score for microfluidic-based versus standard staining assay showed an overall agreement of 94%, with 47 cases (35 negative, 9 equivocal and 3 positive) out of 50 concordantly classified by the two techniques (**Fig. 2c** and **Suppl. S6a**). One of the 3 discordant cases was classified negative (1+) by the standard staining and equivocal (2+) by the microfluidic staining; vice versa, the other two discordant cases were classified equivocal (2+) by the routine assay and negative (1+) by the MTP-based assay (**Fig. 2d** and **Suppl. Table 1**). FISH analysis confirmed the *HER2* status to be concordant with the scoring assessed by the microfluidic staining assay for all 3 analyzed cases (**Fig. 2d** and **Suppl. Table 1**). As recommended by the ASCO/CAP

guidelines, all 8 cases concordantly scored as equivocal by both IHC techniques were also analyzed via FISH assay (one case was not assessed due to lack of biological material). Six cases were confirmed to be *HER2* equivocal by FISH analysis, one was *HER2* amplified and one was *HER2* negative (**Suppl. Fig. S6b**).

ER. The microfluidic-based assay showed a high qualitative ER staining performance comparable to the standard staining (**Fig. 3a-b**) for all considered parameters (**Suppl. Fig. S5**). Evaluation of the ER positive/negative status (cut-off: 1% positive tumor nuclei) for the microfluidic-based versus standard staining techniques showed an overall agreement of 95.9%, with 47 out of 49 concordantly scored cases (**Fig. 3c** and **Suppl. Table 1**). Two out of 49 specimens were differently classified for ER status using the two staining techniques: ER-negative (both 0%) by standard staining and ER-positive (2 and 20%) by MTP staining (**Fig. 3c**). The microfluidic-based staining detected a higher percentage of ER positive nuclei in samples with low to moderate positivity by standard assay. Nevertheless, pairwise comparison of the assessed percentage of positive tumor nuclei employing the two staining techniques resulted in a strong positive correlation with a Pearson coefficient (ρ) equal to 0.89 (p -value < 0.0001).

PR. The MTP-based assay showed a high qualitative PR staining performance comparable to routine methodology as shown in **Fig. 4a-b** and **Suppl. Fig. S5**. Evaluation of the PR positive/negative status (cut-off: 1% positive tumor nuclei) as assessed by the microfluidic versus standard assay showed an overall agreement of 93.6%, with 3 out of 47 cases being discordantly classified (**Fig. 4c** and **Suppl. Table 1**). The 3 discordant case were classified as PR-negative (all scored 0%) after standard IHC while PR-positive (one case 3% and two cases 5%) after microfluidic-based assay (**Fig. 4c**). The MTP-based PR staining, although using four times less concentrated (1:100) primary antibody than the BenchMark (1:25), resulted in higher percentage of PR positive nuclei in samples displaying low to moderate positivity by standard assay. Nonetheless, pairwise comparison of the scored percentage of positive tumor nuclei resulting from two assays showed a strong positive correlation with a Pearson coefficient (ρ) equal to 0.88 (p -value < 0.0001).

Ki67. The MTP-based immunoreaction resulted in a high qualitative Ki67 staining performance (**Fig. 5a**) equivalent to the standard assay (**Suppl. Fig. S5**). The Ki67 proliferative index was computed as the percentage of positive tumor cell nuclei (**Fig. 5b**), as it is regularly evaluated as a continuum value for clinical decisions contingently to its intended use. Pairwise comparison of the percentage of Ki67-stained tumor nuclei as assessed by two IHC techniques resulted in a strong positive correlation with a Pearson coefficient (ρ) equal to 0.87 (p -value < 0.0001). For Ki67 score dichotomization as high/low, it was defined a data-derived cut-off point of 15% Ki67-positive nuclei, corresponding to the sample population median value as per standard assay; an equal median value resulted from the microfluidic-stained population. Three cases out of 48 were differentially classified as Ki67 high/low with an overall agreement of 93.7%. All 3 discordant cases were classified as Ki67-low (score 10%) by standard assay, while Ki67-high (one case 20% and two 15%) by microfluidic-based IHC (**Suppl. Table 1**).

DISCUSSION

In this study we proved the clinical validity of the microfluidic-based IHC assay as an equivalent approach to the standard chromogenic staining, allowing for breast cancer diagnosis by automated, rapid and accurate detection of HER2, ER, PR and Ki67.

Immunohistochemistry is a fundamental methodology in the diagnostic process of solid tumors. The need for IHC is constantly intensifying due to increasing cancer incidence and higher number of biomarker assessments per patient, according to recent trends in personalized medicine. The instruments commonly used for IHC on clinical specimen require hours to perform the staining process. Employment of the microfluidic tissue processor device allowed to perform IHC staining of breast cancer biopsies in less than 16 minutes - apart from deparaffinization and antigen retrieval step - with a time reduction down to 7 folds. A turnaround time lower than the state-of-the-art techniques opens the possibility of obtaining higher throughputs in clinical laboratories, reducing the congestion in healthcare systems.

The configuration of the microfluidic device prototype, at the time of this study, required a reagent volume double as compared to the standard automated stainer, resulting in economic disadvantage other conditions being equal. However, this was in part counterbalanced by the lower concentration of the primary antibody used in the microfluidic device protocols, e.g. down to four times less for PR. Moreover, the next generation of the microfluidic device includes improvements for reducing the reagent consumption to be leastwise comparable to the standard techniques.

The HER2 microfluidic staining in breast carcinoma was previously reported to better correlate with the *HER2* gene amplification status as assessed by FISH [6], [7]. Consistently with prior observations, all discordant cases were confirmed to be correctly classified by MTP staining when re-analyzed by FISH assay, both for lower (1+ versus 2+) and higher (2+ versus 1+) HER2 scored samples.

Being the primary aim of the study to prove the equivalency of the microfluidic IHC to the standard assay in a real clinical setting, the specimens were collected from a hospital diagnostic facility as chronologically accessible. Of note, the distribution of the cases across the scoring categories was unbalanced with a small proportion of HER2-positive carcinomas (i.e. 3/50 cases), providing limited statistical power in consideration of individual categories; however this was inherent to the design of the study and reflected the biomarker distribution in the actual population.

Stratification of HER2-negative results by the assigned score, 0 or 1+, showed about half of the cases (15/35) differentially scored by the two IHC assays, with most of the cases (13/15) scored as 1+ by the MTP while 0 by standard HER2 staining. In a similar manner, the MTP staining could detect a higher number of ER and PR positive nuclei in samples showing low to moderate percentage of positivity by standard assay, being for PR even more remarkable due to four times lower primary antibody concentration in the MTP staining. These data suggested for the microfluidic device to enable for higher sensitivity as compared to the standard assay. This feature could partially account for the ER and PR discordantly scored samples, which were in all cases classified as negative by BenchMark while positive by MTP device. Among others, sensitivity and specificity of different primary antibodies clones are important parameters for IHC accuracy [9], [13]. The anti-human ER rabbit monoclonal SP1

antibody was previously reported to exert a greater sensitivity compared with other clones, including 6F11 [13]. Standard IHC assay of the ER discordant cases with the SP1 clone confirmed one case to be positive as assessed by MTP, while the other one remained negative (data not shown). In previous studies, the anti-human PR rabbit monoclonal 1E2 antibody showed higher analytical affinity for PR with respect to the 636 clone [13], [14]. Standard staining of PR discordant cases with the 1E2 clone confirmed two of the three cases to be positive as assessed by microfluidic assay, while one remained negative as by standard staining (data not shown). Remarkably, the two cases reassessed with the 1E2 clone as positive, showed the same percentage of positive nuclei as for the MTP-based assay (5% for both samples). Keeping the detection system fixed for the standard assay when performing the staining with a different primary antibody clone, ruled out the possibility that apparently higher sensitivity was due to the employment of different detection system for the two assays. The ER/PR positivity after standard staining with alternative clones suggested for higher sensitivity of the MTP that could be counter-balanced by supposedly more sensitive primary antibodies for the standard assay. Unlike for HER2, there is no accepted alternative assay for assessing ER and PR status for discordant cases [13]; therefore, the score resulting from alternative clones was not used to redefine the agreement or concordance. Higher sensitivity of the microfluidic device could represent a high added value with potential economic and health benefits, e.g. false negative proportion for hormone receptor ER/PR status in breast cancer was reported to be 20-30% [15]. Testing of such a possibility will require further investigation on a validation set enriched in low-expression and negative samples to be correlated with clinical outcome. The three Ki67 discordant cases were classified as high by the MTP while low by standard assay; however, in this case there was not a trend for higher Ki67 percentage detected by the microfluidic device in the analyzed sample population.

Semi-quantitative measurement of HER2, ER/PR and Ki67 is relevant for IHC-based surrogate subtype classification of breast cancer in HER2-positive, luminal A-/B-like or triple negative for prognosis and therapeutic strategy determination. According to the latest criteria proposed by Prat et al. [16] and accepted in the 13th St Gallen International Breast Cancer Conference [17], one case would be

discordantly subtyped as luminal B versus A and two cases as luminal A versus B according to PR (cut-off 20%) and Ki67 (cut-off 14%) status as determined by standard or microfluidic assay, respectively. Overall, here we proved the rapidity and non-inferiority of the microfluidic IHC with respect to standard assay for breast cancer diagnosis. Furthermore, being the microfluidic device an open-system, it represents an effective tool for validation and clinical use of any current and emerging biomarkers for tissue diagnostics.

AUTHOR CONTRIBUTUONS AND ETHICAL RESPONSABILITIES

S.B., D.G.D., M.G., N.P. and L.d.L designed the study; S.B., and N.P. supervised study execution; F.A. ran the experiments; M.T.A.F. and J.P.B. blindly scored the assessed cases; M.G.P. interpreted the results, F.A. and M.G.P designed the figures, M.G.P and F.A. wrote the paper; all authors contributed to manuscript writing and revision, and they all approved the submitted version. The authors declare that the article is presently not under consideration for publication in another journal and has not been published previously.

COMPLIANCE WIT ETHICAL STANDARD

Statement of Ethical Approval A total of 50 FFPE breast cancer tissue specimens were retrieved from the Pathology Institute of the University Hospital of Lausanne (CHUV) between January 2016 and April 2017 with the ethical committee approval (protocol number 511-12).

Conflict of Interest At the submission of the paper, DGD and SB are employed by Lunaphore Technologies SA, which is commercializing a microfluidic-based staining device. DGD and MAMG have equity interest in Lunaphore Technologies SA. The other authors declare no conflict of interest.

REFERENCES

- [1] A. McGuire, J. Brown, C. Malone, R. McLaughlin, and M. Kerin, "Effects of Age on the Detection and Management of Breast Cancer," *Cancers (Basel)*, vol. 7, no. 2, pp. 908–929, 2015.
- [2] J. Ferlay *et al.*, "Cancer incidence and mortality worldwide: Sources, methods and major patterns in GLOBOCAN 2012," *Int. J. Cancer*, vol. 136, no. 5, pp. E359–E386, 2015.
- [3] B. K. Banin Hirata, J. M. Oda, R. Losi Guembarovski, C. B. Ariza, C. E. de Oliveira, and M. A. Watanabe, "Molecular markers for breast cancer: prediction on tumor behavior," *Dis Markers*, vol. 2014, p. 513158, 2014.
- [4] D. C. Zaha, "Significance of immunohistochemistry in breast cancer," *World J. Clin. Oncol.*, vol. 5, no. 3, p. 382, 2014.
- [5] S. Bandyopadhyay, M. H. Bluth, and R. Ali-Fehmi, "Breast Carcinoma: Updates in Molecular Profiling 2018," *Clin. Lab. Med.*, vol. 38, no. 2, pp. 401–420, 2018.
- [6] A. T. Ciftlik, H.-A. Lehr, and M. A. M. Gijs, "Microfluidic processor allows rapid HER2 immunohistochemistry of breast carcinomas and significantly reduces ambiguous (2+) read-outs," *Proc. Natl. Acad. Sci.*, vol. 110, no. 14, pp. 5363–5368, 2013.
- [7] D. G. Dupouy *et al.*, "Continuous quantification of HER2 expression by microfluidic precision immunofluorescence estimates HER2 gene amplification in breast cancer," *Sci. Rep.*, vol. 6, 2016.
- [8] S. Brajkovic, D. G. Dupouy, L. De Leval, and M. A. M. Gijs, "Microfluidics for rapid cytokeratin immunohistochemical staining in frozen sections," *Lab. Investig.*, vol. 97, no. 8, pp. 983–991, 2017.
- [9] M. E. H. Hammond *et al.*, "American society of clinical oncology/college of american pathologists guideline recommendations for immunohistochemical testing of estrogen and progesterone receptors in breast cancer," *J. Clin. Oncol.*, vol. 28, no. 16, pp. 2784–2795, 2010.
- [10] A. C. Wolff *et al.*, "Recommendations for human epidermal growth factor receptor 2 testing in breast cancer: American Society of Clinical Oncology/College of American Pathologists clinical practice guideline update. TL - 31," *J. Clin. Oncol.*, vol. 31, no. 31, pp. 3997–4013, 2013.
- [11] A. S. Coates *et al.*, "Tailoring therapies-improving the management of early breast cancer: St Gallen International Expert Consensus on the Primary Therapy of Early Breast Cancer 2015," *Ann. Oncol.*, 2015.
- [12] H. T. Nguyen *et al.*, "Microfluidics-assisted fluorescence in situ hybridization for advantageous human epidermal growth factor receptor 2 assessment in breast cancer," *Lab. Investig.*, vol. 97, no. 1, pp. 93–103, 2017.
- [13] M. L. Troxell, T. Long, J. L. Hornick, A. B. Ambaye, and K. C. Jensen, "Comparison of Estrogen and Progesterone Receptor Antibody Reagents Using Proficiency Testing Data," *Arch. Pathol. Lab. Med.*, vol. 141, no. 10, pp. 1402–1412, 2017.
- [14] B. C. Calhoun *et al.*, "Analytical and clinical performance of progesterone receptor antibodies in breast cancer," *Ann. Diagn. Pathol.*, vol. 35, pp. 21–26, 2018.
- [15] P. Roepman *et al.*, "Microarray-based determination of estrogen receptor, progesterone receptor, and HER2 receptor status in breast cancer," *Clin. Cancer Res.*, vol. 15, no. 22, pp. 7003–7011, 2009.
- [16] A. Prat *et al.*, "Prognostic significance of progesterone receptor-positive tumor cells within immunohistochemically defined luminal a breast cancer," *J. Clin. Oncol.*, 2013.
- [17] A. Goldhirsch *et al.*, "Personalizing the treatment of women with early breast cancer: Highlights of the st gallen international expert consensus on the primary therapy of early breast Cancer 2013," *Ann. Oncol.*, 2013.

FIGURE LEGENDS

Figure 1 Schematic representation of microfluidic tissue processor (MTP) device, optimized protocols and clinical study design (a) The MTP device is based on an automated pressurized system allowing for rapid and uniform sequential delivery of reagents in a reaction chamber. The chamber of reaction (100 μm in height) is created at the interface between a microfluidic chip (MTP) and the glass slide carrying the tissue sample. This open-system allows the allocation of any suitable reagents either in four different 50 ml reservoirs (e.g. buffers) or in eight 1.5-2 ml reservoirs (e.g. antibodies). Reagents are dispensed and washed out by a pressure-driven flow via the microtubing system which is connected to the reagent delivery system (RDS) component. Reagents flow through the MTP system to reach the reaction chamber where the immunological reaction takes place. The exchange of reagents is done in a timeframe of 1 second due to the fast-fluidic exchange (FFEX) technology, which allows the immune-reaction to occur in an extremely short incubation time. After the incubation, the reagents were collected in the waste tube. (b) Microfluidic IHC staining protocols for CK, HER2, ER, PR and Ki67 on FFPE breast cancer resections. Optimized incubation time for all protocol step and primary antibody dilutions are shown as compared to routinely used standard (STD) protocols. H₂O₂: oxygen peroxidase; AbI/II: primary/secondary antibody; DAB: 3, 3'-diaminobenzidine; CuSO₄: copper sulfate; HTX: hematoxylin. (c) Clinical study workflow.

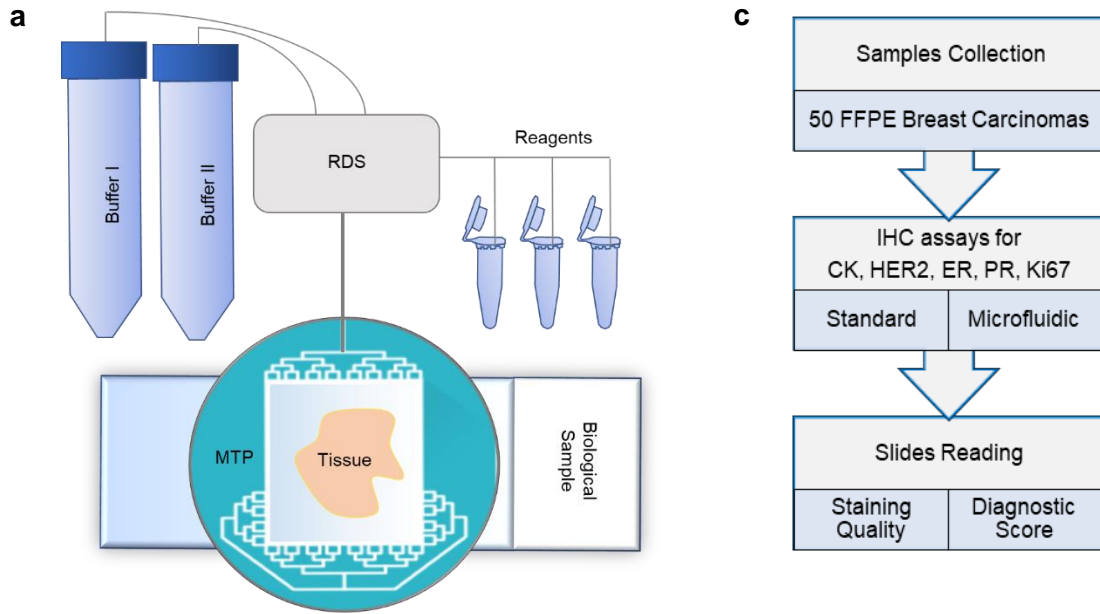
Figure 2 HER2 staining comparison (a-b) Shown is a representative breast carcinoma (a) HER2 positive (score 3+) and (a) HER2 negative (score 0) by standard (upper panels) or MTP-based (bottom panels) IHC assay. Scale bar: 1 mm, 100 μm and 10 μm (left to right). (c) HER2 IHC scoring table. Shown are concordantly scored cases (highlighted in grey) by MTP and standard assay: 35 negative (0-1+), 9 equivocal (2+) and 3 positive (3+); discordantly scored cases are in blue. (d) HER2 scoring comparison: IHC versus FISH. Shown is HER2 scoring by standard (STD), microfluidic (MTP) and dual probe (*HER2/CEP17*) FISH assay for the 3 discordant cases in (c); highlighted in grey are HER2 concordantly scored cases by MTP and FISH assay. The HER2 diagnostic score values for all cases arranged by chronological order (1-50) are reported in **Suppl. Table 1**.

Figure 3 ER staining comparison (a-b) Shown is a representative breast carcinoma (a) ER positive (90% positive nuclei) and (b) ER negative by standard (upper panels) or MTP-based (bottom panels) IHC assay. Scale bar: 1 mm, 100 μm and 10 μm (left to right). (c) ER scoring comparison. Shown is the percentage of ER positive tumor cell nuclei as assessed by a standard or microfluidic (MTP) assay on evaluable cases (n=49); cases are arranged by increasing ER scoring as per standard assay. The ER diagnostic score values for all cases arranged by chronological order (1-50) are reported in **Suppl. Table 1**.

Figure 4 PR staining comparison (a) Shown is a representative breast carcinoma positive for PR by standard (upper panels, 60% positive nuclei) or MTP-based (bottom panels, 40% positive nuclei) IHC assay. Scale bar: 1 mm, 100 μm and 10 μm (left to right). (b) Shown is a representative breast carcinoma negative for PR by standard (upper panels) or MTP-based (bottom panels) IHC assay. Scale bar: 1 mm, 100 μm and 10 μm (left to right). (c) PR scoring comparison. Shown is the percentage of PR positive tumor cell nuclei as assessed by standard or microfluidic (MTP) assay on evaluable cases (n=47); cases are arranged by increasing PR scoring as per standard assay. The PR diagnostic score values for all cases arranged by chronological order (1-50) are reported in **Suppl. Table 1**.

Figure 5 Ki67 staining comparison (a) Shown is a representative breast carcinoma stained for Ki67 (90% positive nuclei) by standard (upper panels) or MTP-based (bottom panels) IHC assay. Scale bar: 1 mm, 100 μm and 10 μm (left to right). (b) Ki67 scoring comparison. Shown is the percentage of Ki67 positive tumor cell nuclei as assessed by standard or microfluidic (MTP) assay on FFPE breast carcinoma (n=48); cases are arranged by increasing Ki67 scoring by standard assay. The Ki67 diagnostic score values for all cases arranged by chronological order (1-50) are reported in **Suppl. Table 1**.

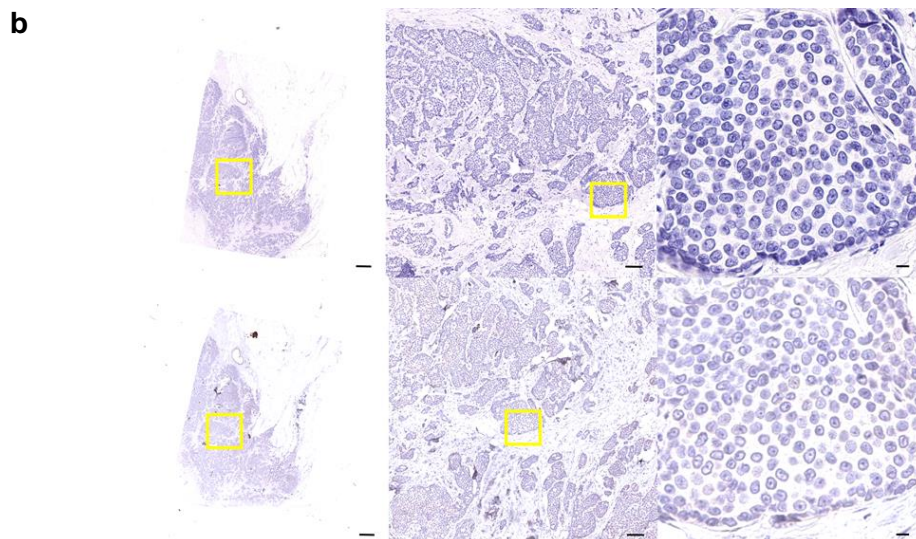
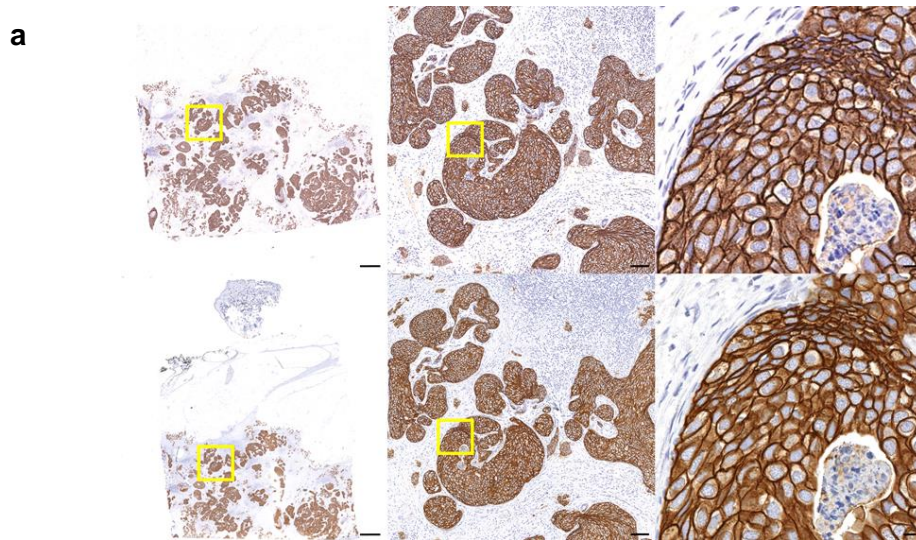
Figure 1



b

| Marker (Clone) | CK (AE1/AE3) | | HER2 (4B5) | | ER (6F11) | | PR (PgR-636) | | Ki67 (MIB-1) | |
|-------------------------------|--------------|-----------|------------|-----------|------------|-----------|--------------|-----------|--------------|-----------|
| | STD | MTP | STD | MTP | STD | MTP | STD | MTP | STD | MTP |
| Abl Dilution | 1:100 | 1:67 | RTU | RTU | 1:50 | 1:50 | 1:25 | 1:100 | 1:50 | 1:50 |
| Protocol Steps | | | | | | | | | | |
| H ₂ O ₂ | 4 | | 4 | | 4 | | 4 | | 4 | |
| Abl | 32 | 4 | 16 | 4 | 32 | 4 | 32 | 4 | 32 | 4 |
| AbII | 8 | 4 | 8 | 4 | 8 | 4 | 8 | 4 | 8 | 4 |
| DAB | 8 | 2.5 | 8 | 2.5 | 8 | 2.5 | 8 | 2.5 | 8 | 2.5 |
| CuSO ₄ | 4 | | 4 | | 4 | | 4 | | 4 | |
| HTX | 8 | 0.25 | 8 | 0.25 | 12 | 0.25 | 8 | 0.25 | 4 | 0.25 |
| Total Time (min) | 102 | 16 | 84 | 16 | 114 | 16 | 114 | 16 | 102 | 16 |

Figure 2



c

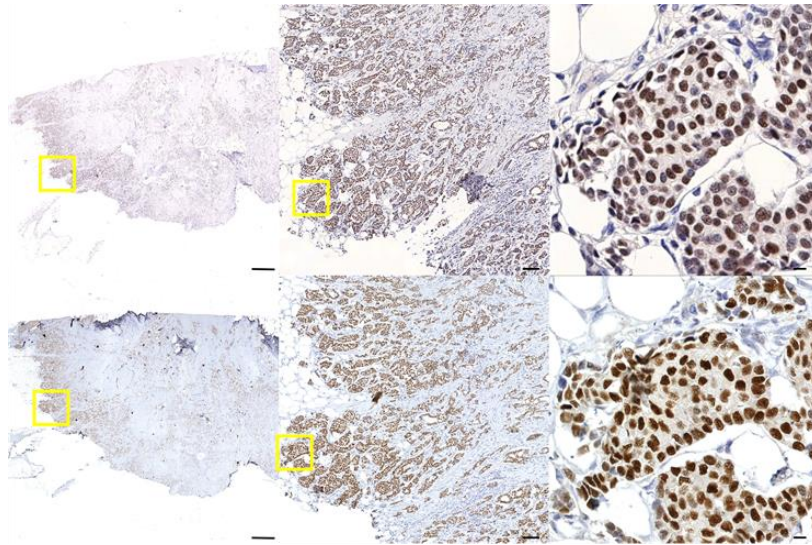
| HER2 Scoring | | Standard IHC | | |
|--------------|------|--------------|----|----|
| | | 0-1+ | 2+ | 3+ |
| MTP IHC | 0-1+ | 35 | 2 | 0 |
| | 2+ | 1 | 9 | 0 |
| | 3+ | 0 | 0 | 3 |

d

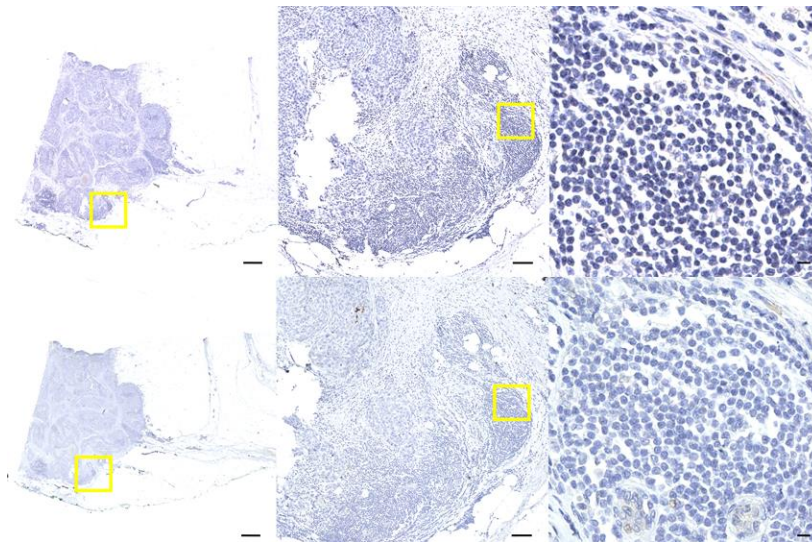
| HER2 Score for Discordant Cases | | |
|---------------------------------|---------|-----------|
| STD IHC | MTP IHC | FISH |
| 1+ | 2+ | Equivocal |
| 2+ | 1+ | Negative |
| 2+ | 1+ | Negative |

Figure 3

a



b



c

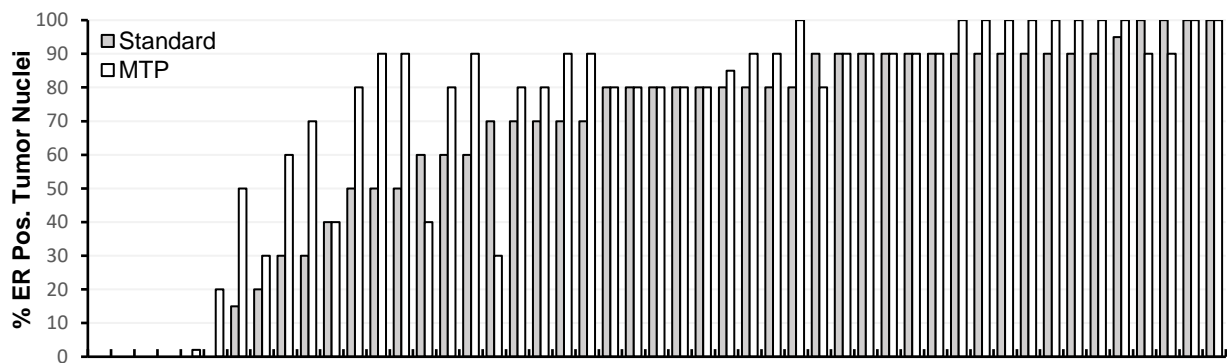
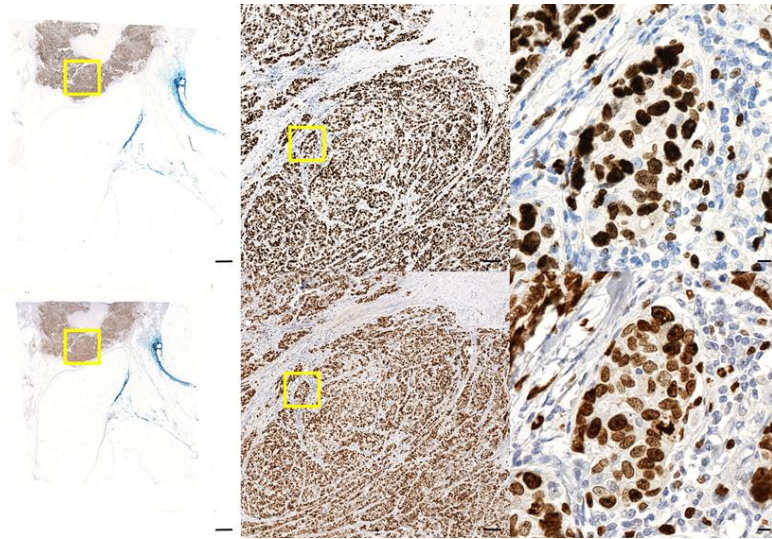
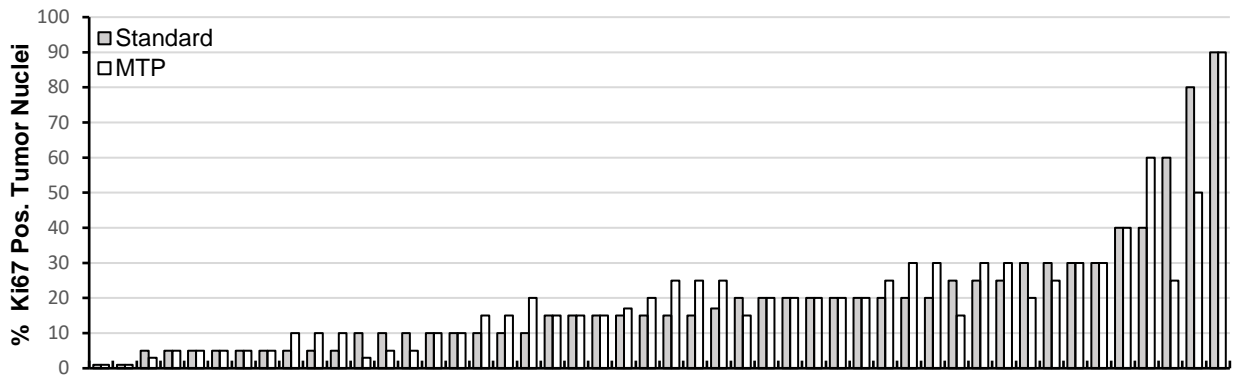


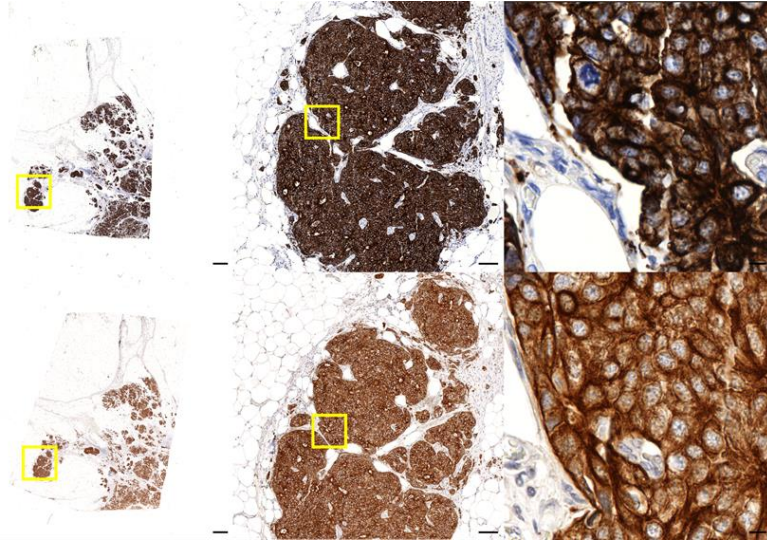
Figure 5

a

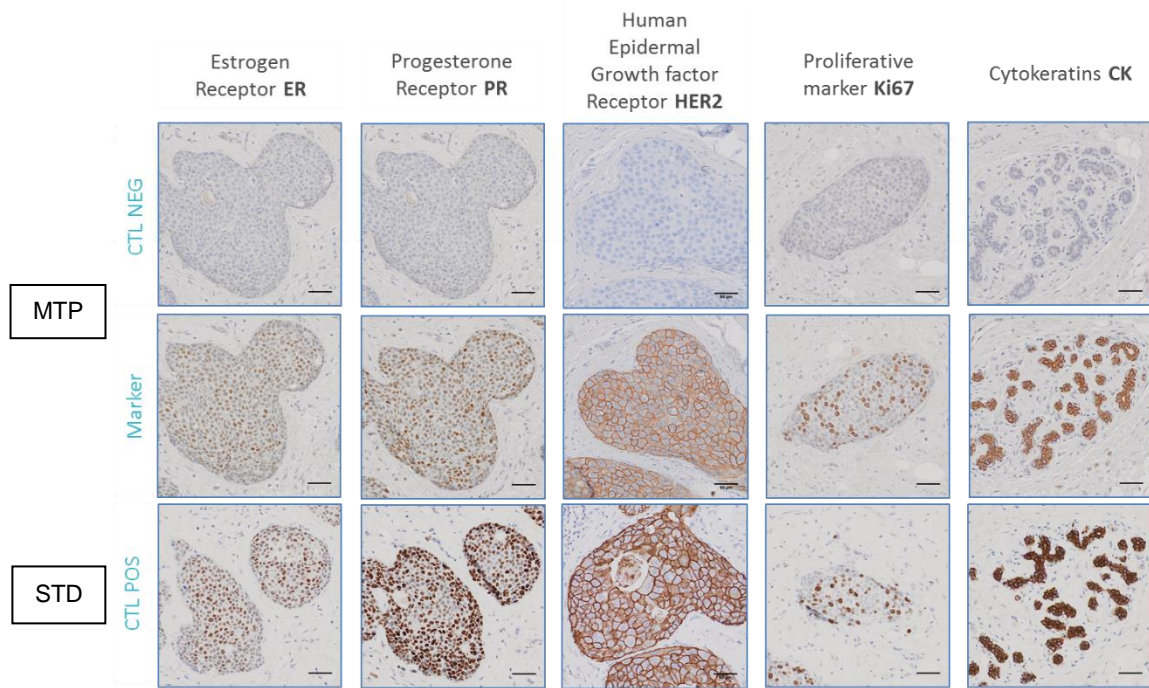


b

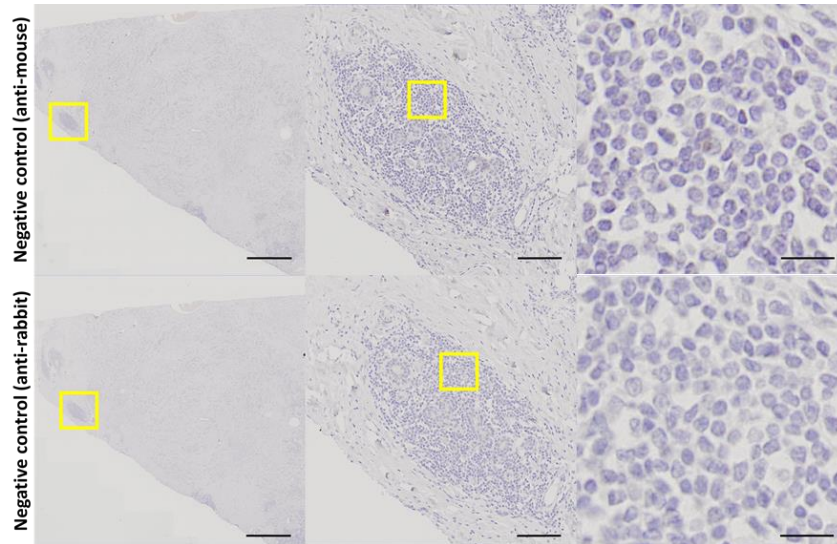




Supplementary Figure S1 CK staining comparison Shown is a representative breast carcinoma stained for CK by standard (upper panels) or MTP-based (bottom panels) IHC assay. Scale bar: 1 mm, 100 μm and 10 μm (left to right). The CK status – as expected classified as positive (score 1) for all carcinoma cases – is reported in **Suppl. Table 1**.

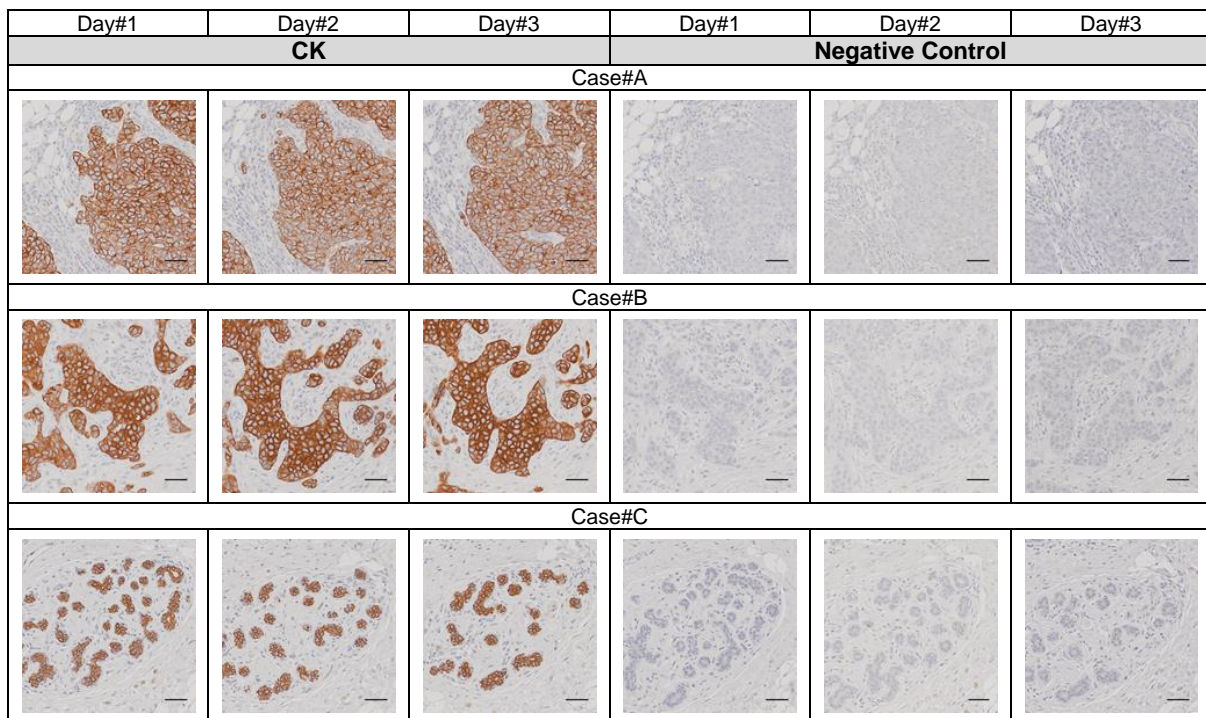


Supplementary Figure S2 Breast cancer diagnostic markers panel Representative IHC staining for ER, PR, HER2, Ki67 and CK (left to right). Shown are negative controls (CTL NEG) obtained by the microfluidic (MTP) staining protocol without use of the primary antibody (first row) and IHC staining of each marker by using the MTP-device (second row) or standard (STD) benchmark machine (third row) used as a reference (CTL POS). Scale bar 50 μ m.

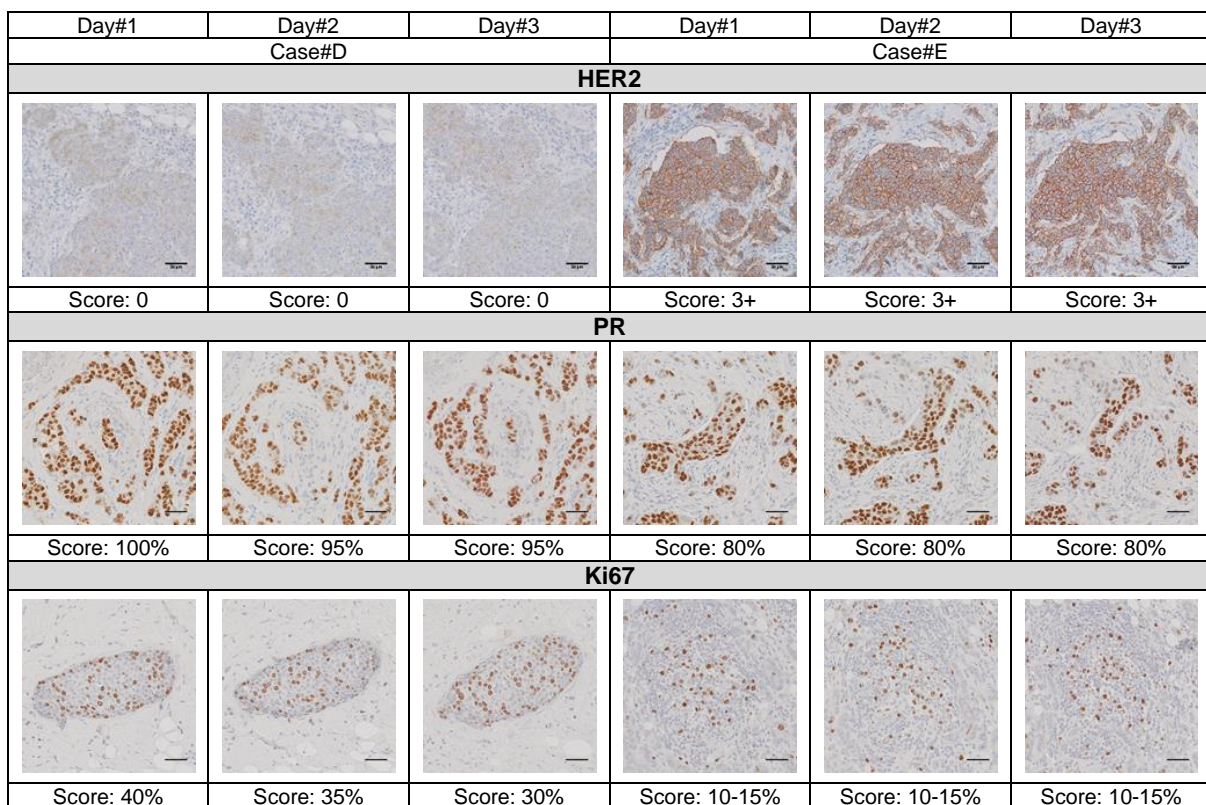


Supplementary Figure S3 Microfluidic negative controls. Representative negative controls obtained by running the staining protocols without the primary antibody using either anti-mouse (upper panels) or anti-rabbit (lower panels) secondary antibodies. Scale bar: 1 mm, 100 μm and 10 μm (left to right).

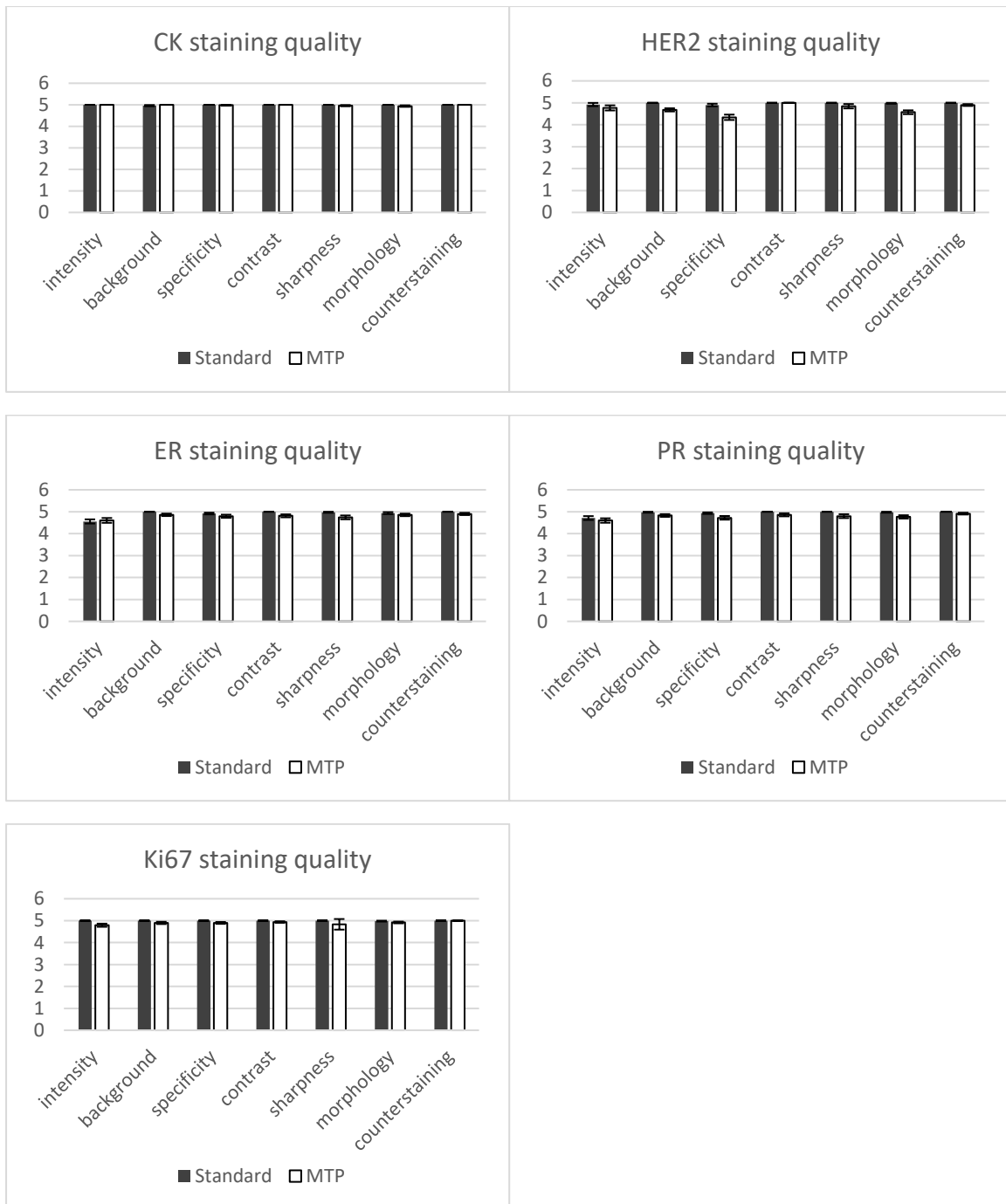
a



b



Supplementary Figure S4 Reproducibility of the microfluidic-based IHC Shown are representative images of microfluidic IHC for (a) CK and the negative control without primary antibody on three cases (#A-B-C) or (b) HER2 (upper), PR (middle) and Ki67 (bottom) on two cases (#D-E) performed on three different days (#1-2-3). The HER2, PR and Ki67 diagnostic score is shown below each image. Scale bar: 50 μ m.



Supplementary Figure S5 Analytical performance comparison All tissue slides stained by the standard or microfluidic (MTP) device for CK, HER2, ER, PR and Ki67 were evaluated for the staining quality based on the following parameters: intensity, background, specificity, contrast, sharpness, morphology and counterstaining. For each parameter a mark from 1 (insufficient) to 5 (excellent) was assigned; mean \pm s.e.m.

a

| HER2 Scoring | | Standard IHC | | | |
|--------------|----|--------------|----|----|----|
| | | 0 | 1+ | 2+ | 3+ |
| MTP IHC | 0 | 11 | 2 | 0 | 0 |
| | 1+ | 13 | 9 | 2 | 0 |
| | 2+ | 0 | 1 | 9 | 0 |
| | 3+ | 0 | 0 | 0 | 3 |

b

| STD IHC Score | MTP IHC Score | FISH Score | HER2 Copy | CEP17 Copy | HER2/CEP17 Ratio | Nr of Scored Nuclei |
|---------------|---------------|------------|-----------|------------|------------------|---------------------|
| 2+ | 2+ | Equivocal | 5.08 | 3.43 | 1.48 | 40 |
| 2+ | 2+ | Equivocal | 4.3 | 2.95 | 1.46 | 40 |
| 1+ | 2+ | Equivocal | 4.1 | 3.2 | 1.28 | 40 |
| 2+ | 2+ | Equivocal | 4.9 | 3.05 | 1.61 | 40 |
| 2+ | 2+ | Equivocal | 4.7 | 3.53 | 1.33 | 80 |
| 2+ | 2+ | Negative | 3.89 | 3.28 | 1.19 | 80 |
| 2+ | 1+ | Negative | 3.91 | 2.69 | 1.46 | 80 |
| 2+ | 1+ | Negative | 3.88 | 2.61 | 1.48 | 80 |
| 2+ | 2+ | NA | -- | -- | -- | -- |
| 2+ | 2+ | Positive | 5.57 | 2.57 | 2.17 | 60 |
| 2+ | 2+ | Equivocal | 5.26 | 3.06 | 1.72 | 80 |
| 2+ | 2+ | Equivocal | 5.81 | 3.14 | 1.85 | 80 |

Supplementary Figure S6 Detailed HER2 cross-methodology scoring comparison (a) HER2 IHC scoring table. Shown are concordantly scored cases (highlighted in grey) by MTP and standard assay: 35 negative (0-1+), 9 ambiguous (2+, in red) and 3 positive (3+); 3 discordantly scored cases are in blue. (b) HER2 scoring comparison: IHC versus FISH. Shown is HER2 scoring by standard (STD), microfluidic (MTP) and dual probe (*HER2/CEP17*) FISH assay for 3 discordant cases (blue) and 8 concordant ambiguous cases (red). Raw values for *HER2/CEP17* copy number and ratio are reported. Total number of scored nuclei is reported in the last column.

| Case | CK | | HER2 | | ER | | PR | | Ki67 | |
|------|-----|-----|-----------|-----------|----------|-----------|----------|----------|-----------|-----------|
| | STD | MTP | STD | MTP | STD | MTP | STD | MTP | STD | MTP |
| #1 | 1 | 1 | 0 | 1+ | 90 | 90 | 40 | 90 | 20 | 15 |
| #2 | 1 | 1 | 0 | 1+ | 30 | 60 | 5 | 30 | 30 | 20 |
| #3 | 1 | 1 | 0 | 0 | 0 | 0 | 0 | 0 | 80 | 50 |
| #4 | 1 | 1 | 3+ | 3+ | 0 | 0 | 0 | 0 | 60 | 25 |
| #5 | 1 | 1 | 0 | 0 | 80 | 90 | 90 | 90 | 20 | 20 |
| #6 | 1 | 1 | 0 | 0 | 95 | 100 | 70 | 70 | 25 | 15 |
| #7 | 1 | 1 | 0 | 0 | 15 | 50 | 0 | 0 | 30 | 25 |
| #8 | 1 | 1 | 1+ | 1+ | 90 | 90 | 1 | 20 | 20 | 20 |
| #9 | 1 | 1 | 0 | 1+ | 100 | 90 | 0 | 0 | 1 | 1 |
| #10 | 1 | 1 | 0 | 0 | 80 | 80 | 90 | 80 | 25 | 15 |
| #11 | 1 | 1 | 0 | 1+ | 100 | 90 | 5 | 60 | 20 | 20 |
| #12 | 1 | 1 | 2+ | 2+ | 80 | 80 | 60 | 50 | 20 | 15 |
| #13 | 1 | 1 | 2+ | 2+ | 90 | 90 | 10 | 2 | 10 | 20 |
| #14 | 1 | 1 | 1+ | 2+ | 70 | 30 | 80 | 80 | 10 | 5 |
| #15 | 1 | 1 | 2+ | 2+ | 70 | 80 | 90 | 80 | 5 | 5 |
| #16 | 1 | 1 | 1+ | 1+ | 80 | 85 | 60 | 40 | | |
| #17 | 1 | 1 | 3+ | 3+ | 30 | 70 | 10 | 20 | 5 | 5 |
| #18 | 1 | 1 | 0 | 0 | 70 | 80 | 1 | 3 | 5 | 5 |
| #19 | 1 | 1 | 1+ | 0 | 0 | 20 | 100 | 100 | 10 | 15 |
| #20 | 1 | 1 | 0 | 1+ | 0 | 0 | 0 | 3 | 40 | 60 |
| #21 | 1 | 1 | 0 | 0 | 0 | 2 | 0 | 0 | 90 | 90 |
| #22 | 1 | 1 | 1+ | 1+ | 60 | 80 | 100 | 100 | 40 | 40 |
| #23 | 1 | 1 | 2+ | 2+ | 90 | 100 | 3 | 10 | 15 | 20 |
| #24 | 1 | 1 | 0 | 0 | 90 | 100 | 70 | 80 | 20 | 20 |
| #25 | 1 | 1 | 0 | 1+ | | | 0 | 0 | 15 | 15 |
| #26 | 1 | 1 | 0 | 0 | 80 | 80 | 60 | 80 | 15 | 20 |
| #27 | 1 | 1 | 1+ | 1+ | 90 | 100 | 20 | 20 | 30 | 30 |
| #28 | 1 | 1 | 0 | 1+ | 40 | 40 | 80 | 60 | 10 | 3 |
| #29 | 1 | 1 | 1+ | 1+ | 80 | 80 | 0 | 0 | 1 | 1 |
| #30 | 1 | 1 | 2+ | 2+ | 80 | 100 | 0 | 0 | 5 | 5 |
| #31 | 1 | 1 | 0 | 1+ | 50 | 90 | 50 | 90 | 10 | 15 |
| #32 | 1 | 1 | 2+ | 1+ | 90 | 80 | 0 | 5 | 30 | 30 |
| #33 | | | 0 | 0 | 80 | 80 | | | 5 | 10 |
| #34 | 1 | 1 | 2+ | 1+ | 90 | 100 | | | | |
| #35 | 1 | 1 | 0 | 1+ | 0 | 0 | 0 | 0 | 15 | 15 |
| #36 | 1 | 1 | 2+ | 2+ | 80 | 90 | | | 15 | 15 |
| #37 | 1 | 1 | 3+ | 3+ | 50 | 80 | 20 | 30 | 10 | 10 |
| #38 | 1 | 1 | 1+ | 0 | 90 | 90 | 20 | 20 | 25 | 30 |
| #39 | 1 | 1 | 1+ | 1+ | 90 | 100 | 80 | 90 | 5 | 3 |
| #40 | 1 | 1 | 2+ | 2+ | 70 | 90 | 2 | 10 | 10 | 10 |
| #41 | 1 | 1 | 1+ | 1+ | 50 | 90 | 60 | 50 | 25 | 15 |
| #42 | 1 | 1 | 2+ | 2+ | 90 | 90 | 20 | 40 | 30 | 15 |
| #43 | 1 | 1 | 0 | 1+ | 60 | 90 | 30 | 50 | 10 | 5 |
| #44 | 1 | 1 | 2+ | 2+ | 100 | 100 | 40 | 100 | 20 | 30 |
| #45 | 1 | 1 | 1+ | 1+ | 20 | 30 | 0 | 5 | 15 | 20 |
| #46 | 1 | 1 | 0 | 1+ | 90 | 100 | 5 | 5 | 15 | 20 |
| #47 | 1 | 1 | 0 | 1+ | 90 | 100 | 70 | 100 | 5 | 10 |
| #48 | 1 | 1 | 0 | 0 | 60 | 40 | 20 | 30 | 20 | 30 |
| #49 | 1 | 1 | 1+ | 1+ | 70 | 90 | 15 | 30 | 5 | 5 |
| #50 | 1 | 1 | 0 | 1+ | 100 | 100 | 40 | 70 | 5 | 10 |

Supplementary Table 1. Shown are diagnostic score values for all markers as assessed by standard (STD) or microfluidic (MTP) assay on FFPE breast carcinomas arranged by chronological order (case #1-50). CK (0: negative, 1: positive); HER2 (0-1+: negative, 2+: equivocal, 3+: positive); ER and PR positive tumor nuclei percentage (<1% negative, ≥1% positive); Ki67 positive tumor nuclei percentage (<15% low, ≥15% high). Strikethrough boxes are cases excluded during the scoring process according to the exclusion criteria as described in the materials and methods section. Discordantly scored samples are in bold case.

Supplementary M&M

Standard IHC pre-processing and staining

Standard IHC assays were performed on a BenchMark ULTRA automated stainer (Roche Ventana) according to manufacturer recommendations. The sample was initially heated up for 4 minutes at 72°C and placed in EZ prep solution (Roche Ventana, 950-102) for deparaffinization. Heat-induced antigen retrieval was performed at 95°C in Cell Conditioning Solution 1 (CC1, Roche Ventana, 950-124) for 8 (PR staining) or 30 minutes (CK, ER, HER2 and Ki67 staining). Incubation time for all staining steps and primary antibody dilutions are reported in **Fig. 1b**. The ultraView Universal DAB detection kit (Roche Ventana, 760-900) was used as detection system. Tissue counterstaining was performed with Hematoxylin solution (Millipore, 75290; 1:1 with acetic acid 100% in double MilliQ water volume). All staining steps were performed at 36°C. Staining for ER and PR with alternative primary antibody clones on discordantly scored cases were performed on the BenchMark as detailed in **Fig. 1b**, except for primary antibody and hematoxylin incubation lasting 16 and 8 minutes, respectively.

IHC quality parameters

The quality of IHC staining was evaluated based on the following parameters: intensity (level of detected signal in the target structures); background (non-specific staining); specificity (absence of unexpected reactivity); contrast (blurry, diffuse or monochromatic staining not allowing distinction of tissue structures); sharpness (absence of overstaining allowing clear visualization of the target protein); morphology (adequacy of tissue morphology); counterstaining (clear visualization of tissue structures).

IHC diagnostic scoring

ER, PR and HER2 were evaluated according to ASCO/CAP guideline recommendations [1], [2].

ER and PR were considered positive when >1 % of the tumor cells showed a nuclear staining. The intensity of the staining was also evaluated as faint, moderate or strong.

HER2 staining was considered negative (score 0), when no staining or membrane staining that was incomplete and faint/barely perceptible was seen in <10% of tumor cells. HER2 was interpreted as negative (score 1+), if incomplete membrane staining that was faint/barely perceptible and within > 10% of tumor cells was present. In case of an incomplete and/or weak/moderate circumferential membrane staining within > 10% of tumor cells or an intense complete and circumferential membrane staining and within <10% of tumor cells, it was scored as equivocal (score 2+). Cases considered positive (score 3+) were those showing complete and intense circumferential membrane staining within >10% of tumor cells. For equivocal cases, a reflex *HER2* FISH test was performed.

The Ki67 (MIB-1) index represents the percentage of positively staining cells among the total number of invasive cells in the scored area. At least 3 high-power (×40 objective) fields, including hot spots if present, were evaluated. Only nuclear staining was considered positive and the staining intensity was not considered relevant for the Ki67 index. Each case was reported as Ki67-high when displaying at least 15% of positive tumor cell nuclei, and Ki67-low when less than 15%; the cut-off point of 15% was a data-derived threshold, corresponding to the sample population median value in accordance with the 2015 St. Gallen Conference recommendations [3].

References

- [1] M. E. H. Hammond *et al.*, "American society of clinical oncology/college of american pathologists guideline recommendations for immunohistochemical testing of estrogen and progesterone receptors in breast cancer," *J. Clin. Oncol.*, vol. 28, no. 16, pp. 2784–2795, 2010.
- [2] A. C. Wolff *et al.*, "Recommendations for human epidermal growth factor receptor 2 testing in breast cancer: American Society of Clinical Oncology/College of American Pathologists clinical practice guideline update. TL - 31," *J. Clin. Oncol.*, vol. 31, no. 31, pp. 3997–4013, 2013.
- [3] A. S. Coates *et al.*, "Tailoring therapies-improving the management of early breast cancer: St Gallen International Expert Consensus on the Primary Therapy of Early Breast Cancer 2015," *Ann. Oncol.*, 2015.
- [4] H. T. Nguyen *et al.*, "Microfluidics-assisted fluorescence in situ hybridization for advantageous human epidermal growth factor receptor 2 assessment in breast cancer," *Lab. Investig.*, vol. 97, no. 1, pp. 93–103, 2017.