

Serveur Académique Lausannois SERVAL [serval.unil.ch](http://serval.unil.ch)

## Author Manuscript

Faculty of Biology and Medicine Publication

**This paper has been peer-reviewed but does not include the final publisher proof-corrections or journal pagination.**

Published in final edited form as:

**Title:** Cytological features of uterine tumors resembling ovarian sex-cord tumors in liquid-based cervical cytology: a potential pitfall. Report of a unique and rare case.

**Authors:** Dubruc E, Alvarez Flores MT, Bernier Y, Gherasimiuc L, Ponti A, Mathevet P, Bongiovanni M

**Journal:** Diagnostic cytopathology

**Year:** 2019 Feb 13

**DOI:** [10.1002/dc.24153](https://doi.org/10.1002/dc.24153)

In the absence of a copyright statement, users should assume that standard copyright protection applies, unless the article contains an explicit statement to the contrary. In case of doubt, contact the journal publisher to verify the copyright status of an article.



**Cytological features of uterine tumors resembling ovarian sex cord tumors (UTROSCTs) in liquid-based cervical cytology: a potential pitfall. Report of a unique and rare case.**

Journal:	<i>Diagnostic Cytopathology</i>
Manuscript ID	DC-18-394.R1
Wiley - Manuscript type:	Brief Report
Date Submitted by the Author:	n/a
Complete List of Authors:	Dubruc, Estelle; Lausanne University Hospital, Service of Clinical Pathology Alvarez Flores, Maria Teresa ; Lausanne University Hospital, Service of Clinical Pathology Bernier, Yannick; Lausanne University Hospital, Service of Clinical Pathology Gherasimiuc, Lucia; Lausanne University Hospital, Service of Gynecology Ponti, Alexandre; Lausanne University Hospital, Service of Radiology Mathevet, Patrice; Lausanne University Hospital, Service of Gynecology Bongiovanni, Massimo; Lausanne University Hospital, Service of Clinical Pathology
Keywords:	liquid-based cytology, Pap smears, uterine tumor resembling ovarian sex-cord tumor, UTROSCT, differential diagnosis

SCHOLARONE™  
Manuscripts

1  
2  
3 **Cytological features of uterine tumors resembling ovarian sex cord tumors (UTROSCTs) in**  
4 **liquid-based cervical cytology: a potential pitfall. Report of a unique and rare case.**  
5  
6  
7  
8

9 Estelle Dubruc, MD<sup>1</sup>, Maria Teresa Alvarez Flores, MD<sup>1</sup>, Yannick Bernier, CT<sup>1</sup>, Lucia Gherasimiuc,  
10 MD<sup>2</sup>, Alexandre Ponti, MD<sup>3</sup>, Patrice Mathevet, MD PhD<sup>2</sup>, Massimo Bongiovanni, MD<sup>1</sup>  
11  
12  
13

14  
15 <sup>1</sup>Service of Clinical Pathology, Lausanne University Hospital, Institute of Pathology, Lausanne,  
16 Switzerland.  
17

18  
19 <sup>2</sup>Service of Gynecology, Lausanne University Hospital, Lausanne, Switzerland.  
20

21  
22 <sup>3</sup>Service of Radiology, Lausanne University Hospital, Lausanne, Switzerland.  
23  
24  
25  
26  
27

28 **Corresponding author:**  
29

30 Massimo Bongiovanni, MD  
31

32  
33 Service of Clinical Pathology, Institute of Pathology, Lausanne University Hospital,  
34

35  
36 Rue du Bugnon 25, CH-1011, Lausanne, Switzerland.  
37  
38

39 E-mail: [massimo.bongiovanni@chuv.ch](mailto:massimo.bongiovanni@chuv.ch)  
40  
41  
42  
43  
44  
45  
46

47 **Funding:** this study did not receive any funding.  
48

49 **Disclosure:** all the authors have nothing to disclose.  
50  
51  
52  
53  
54  
55  
56  
57  
58  
59  
60

**Abstract:**

Uterine tumors resembling ovarian sex cord tumors (UTROSCTs) are rare uterine neoplasms of uncertain etiology that resemble the well-known sex cord tumors of the ovary and display a combined sex cord, epithelial, and smooth muscle immunophenotype. Most tumors are associated with a benign clinical course. Here, we report the first cytological description of uterine UTROSCTs in liquid-based cervical cytology. A 56-year-old menopausal woman who complained of vaginal bleeding was admitted to the emergency room and was discovered to have a uterine intraluminal polypoid mass protruding through the vagina. A Papanicolaou (Pap) test was performed, and the liquid-based cytology (LBC) (ThinPrep) preparation showed isolated tumor cells with scant cytoplasm and slightly irregular, ovoid nuclei with fine chromatin and small nucleoli. Mitotic figures were not observed. The background was hemorrhagic without necrosis. These features raised the differential diagnosis of cervical adenocarcinoma, endometrioid adenocarcinoma and, less likely, an epithelial component of a malignant mixed Müllerian tumor (MMMT) (as clinically suspected). Polypectomy and subsequent hysterectomy were performed, and the final histological evaluation identified a UTROSCT. This is the first case describing the cytological features of a UTROSCT consisting of malignant-appearing adenocarcinomatous cells in LBC Pap smears. This diagnostic possibility, albeit rare, should be included in the differential diagnosis when isolated atypical cells are seen in women in the above scenario. As these features are not specific, they may result in misinterpretation with tumors that are more common and aggressive.

**Key words:** liquid-based cytology, Pap smears, uterine tumor resembling ovarian sex-cord tumor, UTROSCT, differential diagnosis.

## Introduction

Uterine tumors resembling ovarian sex-cord tumors (UTROSCTs) are rare uterine neoplasms that were first reported by Clement and Scully in 1976.<sup>1</sup> Since then, this tumor entity has been delineated into two distinct subtypes. Type I tumors, known as endometrial stromal tumors with sex cord-like elements (ESTSCLs), have been recognized to have malignant potential, as they have a conventional component of endometrial stromal neoplasia that, if invasive, determines the prognosis of the patient. Type II tumors comprise tumors composed exclusively of sex cord-like elements, and most are considered to behave in a benign fashion, with some showing metastasis and recurrence.<sup>2</sup> The last World Health Organization (WHO) Classification of Tumors of the Female Reproductive Organs placed UTROSCTs in the category of 'endometrial stromal and related neoplasms'.<sup>3</sup> Approximately 43 cases have been reported histologically in the literature.<sup>4,5</sup> However, only two reports have described the cytological features with touch imprint,<sup>6,7</sup> and none have been described with conventional or liquid-based cytology (LBC). Current cervical screening programs using LBC increase the possibility of encountering UTROSCTs in such specimens, thus leading to potential diagnostic pitfalls.

Here, we report a unique case of a UTROSCT with preoperative LBC, in which the diagnosis was not expected. The cytological features and the differential cytological diagnosis are discussed.

## Case report

A 56-year-old menopausal woman with no particular medical history presented to her family gynecologist with vaginal bleeding. During the gynecological examination, a hemorrhagic and necrotic mass protruding through the vagina was noted, and the cervix was difficult to reach behind the mass. The patient was transferred to our gynecological emergency department for further examination, and a Papanicolaou (Pap) test was initially performed. As the patient presented with severe menorrhagia, an excision of the vaginal mass was first performed. During surgery, a necrotic mass (7 cm) was observed inside the vagina, with a pedicle coming from the endocervix. Excision of the mass and hemostasis were performed via a vaginal approach. The protruded mass was sent for pathology. The surgery was followed by a pelvic MRI. This approach demonstrated a residual solid mass of 2.6 cm originating from the right uterine wall and protruding inside the lumen (Figure 1A and 1B). The lesion appeared to be isosignal to the myometrium on T1- and T2-weighted imaging with homogeneous enhancement after a gadolinium injection. On diffusion-weighted planes, we observed a restricted diffusion limited to the pediculated component (Supplemental Figure 1). The uterine wall was thus not suspected to be invaded. Apart from an obstructive hematometra and some physiological free pelvic fluid, no other abnormalities were seen. A secondary hysterectomy and bilateral salpingo-oophorectomy were performed following the final pathological report.

### *Cytological Findings*

The cytological specimen was processed using the ThinPrep technique (Hologic Inc., Marlborough, Mass., USA). The Pap test showed a hemorrhagic background with atypical cells. The cells were often isolated (Figure 1C) or arranged in small clusters (Figure 1D), with scant cytoplasm. The nuclei were slightly irregular and ovoid, with fine granular chromatin and conspicuous nucleoli. Mitotic figures or necrosis were not observed. These cells were more consistent with cells of glandular origin; thus, the preliminary diagnosis was that of “atypical glandular cells consistent with adenocarcinoma, NOS”.

### *Histological findings:*

Macroscopically, the mass was fragmented and hemorrhagic. Microscopic examination showed a tumor organized in papillary structures as well as slit-like spaces, trabeculae and solid areas (Figure 1E). The tumor cells were small and regular with eosinophilic cytoplasm, although some had clear cytoplasm. Frequent dense eosinophilic intracytoplasmic (rhabdoid) inclusions were noted (Figure 1F). The nuclei were oval, with finely distributed chromatin and one clearly visible nucleolus, and the overall appearance was bland and monotonous (Figure 1E, inset). Rare mitoses were found. The intervening stroma was scant and fibroblastic, with associated scattered foamy histiocytes.

The tumor cells showed diffuse positivity for CKAE1/AE (Figure 1F, upper right inset) and estrogen receptors, patchy staining for smooth muscle markers (AML and desmin), and focal expression of sex cord markers (calretinin, inhibin (Figure 1F, lower right inset), MelanA, CD99, CD56, and WT1). No staining was observed for neuroendocrine markers (synaptophysin and chromogranin), PAX8, S100, HMB-45, EMA, CK7, CK20, CD117, CD30, CEA, or glypican3. The final diagnosis was a UTROSCT. A hysterectomy showed that the tumor originated from the right uterine wall and protruded into the cavity. The greatest dimension of the tumor was 2.6 cm. The cut surface was yellowish with hemorrhagic areas. Microscopically, the tumor showed similar histological features. There was neither myometrial invasion nor cervical involvement, and the peritoneal lavage did not exhibit tumor cells. The patient remained under radiological surveillance with a short follow up (4 months).

### **Discussion:**

A UTROSCT is an uncommon uterine neoplasm that accounts for less than 0.5% of all uterine malignancies and 10-15% of mesenchymal uterine malignancies. Most UTROSCTs exhibit benign behavior but occasionally recur or metastasize; hence, these tumors are considered neoplasms of uncertain malignant potential that rarely behave in an aggressive manner.<sup>5,8</sup> Histogenesis remains uncertain, and postulated theories include derivation from ovarian sex cord cells that have been displaced during embryogenesis, derivation from uncommitted mesenchymal stem cells, and overgrowth of sex cord elements within an endometrial stromal neoplasm or an adenosarcoma.<sup>9</sup> The last hypothesis appears unlikely because UTROSCTs lack *JAZF1-JJAZ1* gene fusion or *PFHI*

1  
2  
3 rearrangement, in contrast to endometrial stromal tumors with or without sex cord elements, suggesting  
4 an independent origin.<sup>10</sup> The tumors are often polypoid and submucosal but can be intramyometrial,  
5 subserosal, or cervical.<sup>11</sup> Given the rarity of this tumor, the diagnosis of UTROSCT is usually made  
6 postoperatively via histopathological analysis. Morphologically, these tumors closely resemble the  
7 morphological spectrum of ovarian sex cord-stromal tumors, with organization in sheets, cords, nests,  
8 trabeculae or tubules. Neoplastic cells are epithelioid with scant eosinophilic, clear cytoplasm or, rarely,  
9 with a rhabdoid appearance.<sup>12</sup> The nuclei are bland with minimal atypia and rare mitoses. These tumors  
10 characteristically exhibit polyphenotypic immunophenotypes with coexpression of cytokeratins, smooth  
11 muscle markers, hormone receptors, and markers, which are commonly positive in ovarian sex cord-  
12 stromal neoplasms.<sup>12,13</sup>

13  
14 We could find only 2 cases in the literature that described cytological features obtained by touch imprint.  
15 Nishikimi et al. reported the intraoperative touch imprint of ESTSCLEs.<sup>6</sup> Cytological examination  
16 revealed abundant hyaline-like substances and tumor cells aligned in a cord or glandular form, with  
17 scant cytoplasm and ovoid-to-spindle-shaped nuclei with little atypia. More recently, Kondo et al.  
18 described stump smears from resected lung metastases of a UTROSCT.<sup>7</sup> In their case, imprint cytology  
19 of the tumor showed round to short spindle-shaped cells with bare nuclei and no atypia. These cells were  
20 organized in diverse patterns: isolated, scattered or in sheets with poor cohesion; cords or glandular  
21 forms were not seen.

22  
23 In the present case, however, cytological examination demonstrated neoplastic small epithelial cells that  
24 were isolated or in clustered formation. At first glance, these cells appeared slightly atypical: scant  
25 cytoplasm, ovoid nuclei with nuclear membrane irregularities, fine chromatin and conspicuous nucleoli  
26 (Figure 1C). No mitoses or necrosis were seen, and the background was clean. The abundance of cells  
27 present and the clinical presentation of a protruding mass into the uterine cavity were all together  
28 suspicious for us in the sense of a neoplasm. Therefore, the diagnosis of atypical glandular cells  
29 consistent with well-differentiated adenocarcinoma was first suspected. In the differential diagnosis, we  
30 suggested the possibility of cervical adenocarcinoma or an epithelial component of an MMMT.  
31 However, retrospectively, large sheets of glandular cells or crowded groups of tumor cells with feathery  
32 edges were not present. Clinical presentation with a necrotic mass protruding in the vaginal cavity raises  
33 the possibility of a diagnosis of MMMT.<sup>14</sup> In fact, the sarcomatous component does not easily shed, and  
34 Pap tests may only show the malignant epithelial component.<sup>15</sup> In the present case, neoplastic cells could  
35 represent an epithelial component. However, the morphological characteristics of endometrial  
36 adenocarcinoma were missing. There were no chromatin abnormalities; additionally, macronucleoli are  
37 uncommon in this entity, and watery diathesis is frequently seen (Table 1). Moreover, tumor diathesis,  
38 which is a characteristic cytological finding of MMMT, was not present.

39  
40  
41  
42  
43  
44  
45  
46  
47  
48  
49  
50  
51  
52  
53  
54  
55  
56  
57  
58  
59  
60  
In conclusion, we describe the first case of a UTROSCT on preoperative LBC. Pap tests usually cannot  
detect mesenchymal tumors of the female genital tract since characteristic cells rarely exfoliate. When

1  
2  
3 exfoliation occurs due to several factors, such as necrosis, ulceration, and tumor location, as in the  
4 present case, tumor cells can be recognized but are difficult to classify by cytology alone. UTROSCTs  
5 in a Pap test could give rise to important diagnostic pitfalls. Cytopathologists should include this entity  
6 in the differential diagnosis in cases that contain isolated, mildly atypical cells without other cytological  
7 findings oriented to more common malignant diagnosis and in the presence of characteristic cytological  
8 findings. Indeed, the distinction among other malignant tumors is important because the postoperative  
9 management of a UTROSCT is different, as this tumor has a benign course with limited potential for  
10 recurrence.<sup>5,16</sup>  
11  
12  
13  
14  
15  
16  
17  
18  
19  
20  
21  
22  
23  
24  
25  
26  
27  
28  
29  
30  
31  
32  
33  
34  
35  
36  
37  
38  
39  
40  
41  
42  
43  
44  
45  
46  
47  
48  
49  
50  
51  
52  
53  
54  
55  
56  
57  
58  
59  
60

For Peer Review



1  
2  
3 **Acknowledgments**  
4

5 We thank Dr. Esther Oliva (Department of Pathology, Massachusetts General Hospital, Boston,  
6 Massachusetts, USA) for confirming our diagnosis and Dr. Amedeo Sciarra (Service of Clinical  
7 Pathology, Lausanne University Hospital, Institute of Pathology, Lausanne, Switzerland) for technical  
8 assistance in image preparation.  
9  
10  
11  
12  
13  
14  
15  
16  
17  
18  
19  
20  
21  
22  
23  
24  
25  
26  
27  
28  
29  
30  
31  
32  
33  
34  
35  
36  
37  
38  
39  
40  
41  
42  
43  
44  
45  
46  
47  
48  
49  
50  
51  
52  
53  
54  
55  
56  
57  
58  
59  
60

For Peer Review

## References

- [1] Clement PB, Scully RE. Uterine tumors resembling ovarian sex-cord tumors. A clinicopathologic analysis of fourteen cases. *Am J Clin Pathol.* 1976;66:512–25.
- [2] Czernobilsky B, Mamet Y, David MB, Atlas I, Gitstein G, Lifschitz-Mercer B. Uterine retiform sertoli-leydig cell tumor: report of a case providing additional evidence that uterine tumors resembling ovarian sex cord tumors have a histologic and immunohistochemical phenotype of genuine sex cord tumors. *Int J Gynecol Pathol.* 2005;24:335–40.
- [3] Kurman RJ, Carcangiu M, Herrington C, Young RH. WHO Classification of Tumours of Female Reproductive Organs. *Lyon: International Agency for Research on Cancer;* 2014.
- [4] Umeda S, Tateno M, Miyagi E, et al. Uterine tumors resembling ovarian sex cord tumors (UTROSCT) with metastasis: clinicopathological study of two cases. *Int J Clin Exp Pathol.* 2014;7:1051–9.
- [5] Blake EA, Sheridan TB, Wang KL, et al. Clinical characteristics and outcomes of uterine tumors resembling ovarian sex-cord tumors (UTROSCT): a systematic review of literature. *Eur J Obstet Gynecol Reprod Biol.* 2014;181:163–70.
- [6] Nishikimi K, Habuka N, Okazima Y, et al. Cytologic findings of low grade endometrial stromal sarcoma with sex cord-like differentiation: a case report. *Acta Cytol.* 2010;54:85–8.
- [7] Kondo Y, Sakaguchi S, Mikubo M, et al. Lung metastases of a uterine tumor resembling ovarian sex-cord tumor: Report of a rare case. *Diagn Cytopathol.* 2018;46:88–91.
- [8] Moore M, McCluggage WG. Uterine tumour resembling ovarian sex cord tumour: first report of a large series with follow-up. *Histopathology.* 2017;71:751–9.
- [9] Croce S, de Kock L, Boshari T, et al. Uterine Tumor Resembling Ovarian Sex Cord Tumor (UTROSCT) Commonly Exhibits Positivity With Sex Cord Markers FOXL2 and SF-1 but Lacks FOXL2 and DICER1 Mutations. *Int Soc Gynecol Pathol.* 2016;35:301–8.
- [10] Staats PN, Garcia JJ, Dias-Santagata DC, et al. Uterine tumors resembling ovarian sex cord tumors (UTROSCT) lack the JAZF1-JJAZ1 translocation frequently seen in endometrial stromal tumors. *Am J Surg Pathol.* 2009;33:1206–12.
- [11] Kabbani W, Deavers MT, Malpica A, et al. Uterine tumor resembling ovarian sex-cord tumor: report of a case mimicking cervical adenocarcinoma. *Int Soc Gynecol Pathol.* 2003;22:297–302.
- [12] Hurrell DP, McCluggage WG. Uterine tumour resembling ovarian sex cord tumour is an immunohistochemically polyphenotypic neoplasm which exhibits coexpression of epithelial, myoid and sex cord markers. *J Clin Pathol.* 2007;60:1148–54.
- [13] de Leval L, Lim GSD, Waltregny D, Oliva E. Diverse phenotypic profile of uterine tumors resembling ovarian sex cord tumors: an immunohistochemical study of 12 cases. *Am J Surg Pathol.* 2010;34:1749–61.
- [14] Bongiovanni M, Vitale VA, Grassi P, Mazzucchelli L. Malignant mixed Müllerian tumor with an extensive squamous-cell carcinomatous component: a potential pitfall in liquid-based cervical cytology. *Acta Cytol.* 2014;58:413–8.
- [15] Casey MB, Caudill JL, Salomão DR. Cervicovaginal (Papanicolaou) smear findings in patients with malignant mixed Müllerian tumors. *Diagn Cytopathol.* 2003;28:245–9.

1  
2  
3  
4  
5  
6  
7  
8  
9  
10  
11  
12  
13  
14  
15  
16  
17  
18  
19  
20  
21  
22  
23  
24  
25  
26  
27  
28  
29  
30  
31  
32  
33  
34  
35  
36  
37  
38  
39  
40  
41  
42  
43  
44  
45  
46  
47  
48  
49  
50  
51  
52  
53  
54  
55  
56  
57  
58  
59  
60

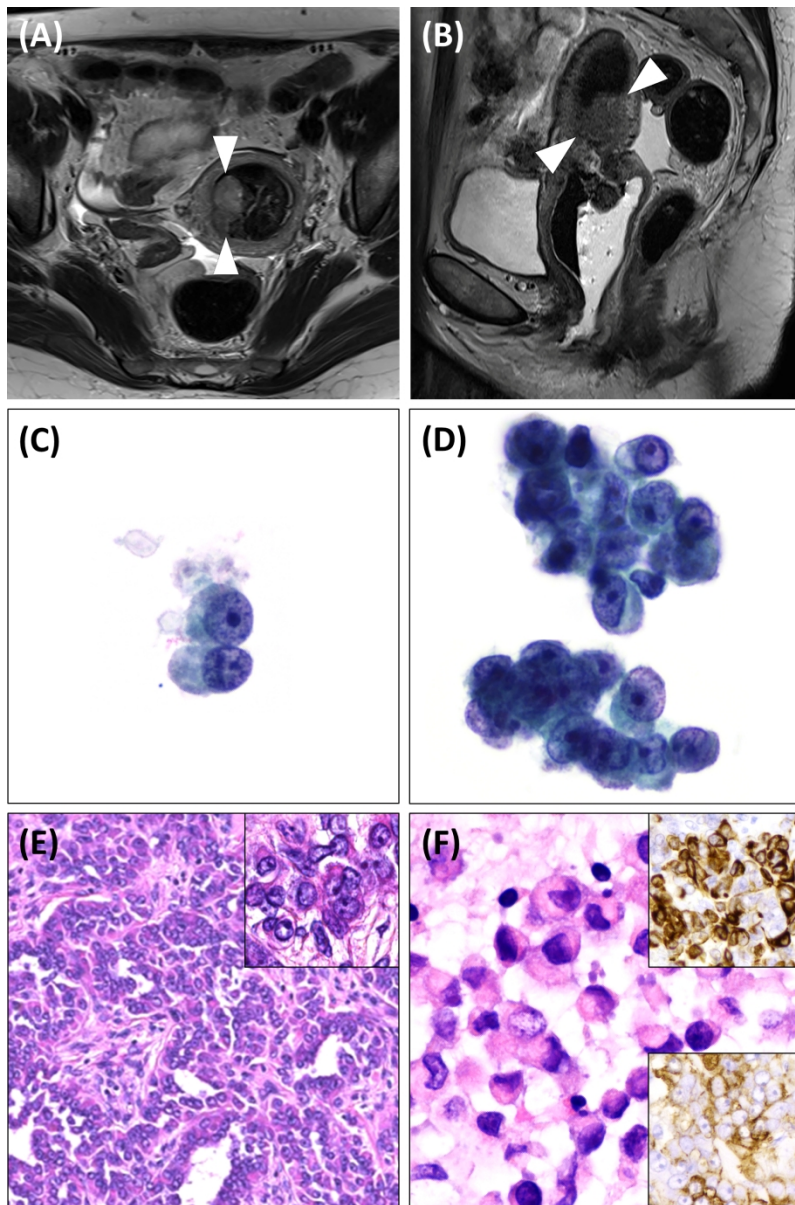
[16] Conklin CMJ, Longacre TA. Endometrial stromal tumors: the new WHO classification. *Adv Anat Pathol.* 2014 Nov;21:383–93.

For Peer Review

**Table 1.** Cytomorphological features of uterine tumors resembling ovarian sex cord tumors (UTROSCTs) and differential diagnosis.

	<b>Uterine tumors resembling ovarian sex cord tumors (UTROSCTs)</b>	<b>Endocervical adenocarcinoma</b>	<b>Endometrial adenocarcinoma (serous and endometrioid)</b>
<b>Architecture</b>	Isolated or poor cohesion. Rosette-like or trabecular arrangement (touch imprint)	Sheets, feathering, marked cellular crowding	Small cluster, spheres
<b>Cells</b>	Medium sized, round	Abundant endocervical cells, columnar	Sparse, round
<b>Cytoplasm</b>	Scanty	Abundant, foamy or granular	Scant or abundant, vacuolated and cytoplasmic neutrophils
<b>Nuclei</b>	Finely granular chromatin, no mitosis	Large, pale or hyperchromatic	hyperchromatic
<b>Nucleoli</b>	Sometimes one, prominent	Multiple, large	Single, prominent
<b>N/C ratio</b>	High	High	High
<b>Background</b>	Clear	Coarse tumor diathesis	Histiocytes, watery tumor diathesis
<b>IHC, positive</b>	CK, hormone receptors, smooth muscle and sex cord-like markers (inhibin, calretinine)	CEA, p16	Vimentin, hormone receptors.
<b>IHC, negative</b>		hormone receptors, sex cord-like and smooth muscle markers	sex cord-like and smooth muscle markers
<b>Molecular findings</b>	Lacks <i>FOXL2</i> and <i>DICER1</i> mutations. No <i>JAZF1-SUZ12</i> fusion No <i>PHF1</i> gene rearrangements		<i>POLE</i> (ultramutated), MSI (hypermuted), copy-number low (endometrioid), copy-number high (serous-like)

Legend: UTROSCTs: uterine tumors resembling ovarian sex cord tumors; CK: cytokeratin; N/C: nuclear/cytoplasmic; IHC: immunohistochemistry.

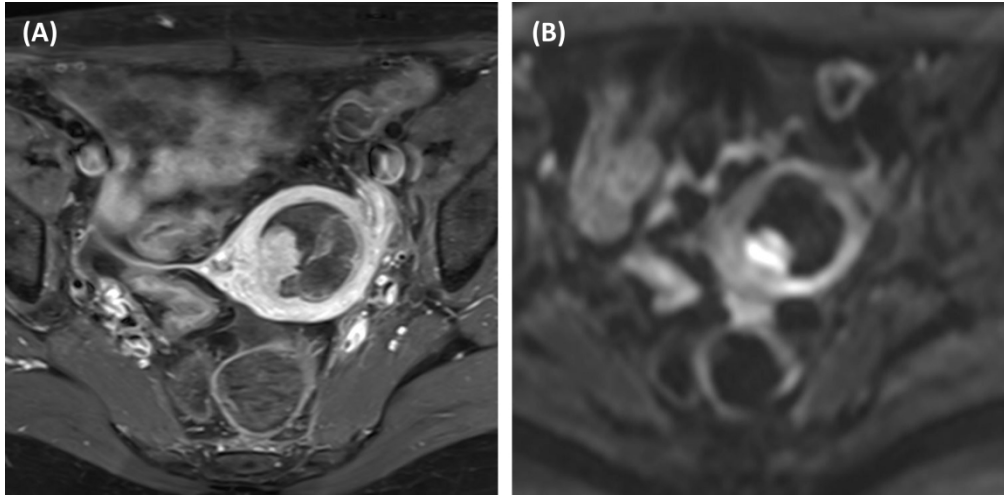


Radiological, cytological, histological and immunohistochemical aspects of UTROSCT. A: Pelvic MRI with vaginal ultrasound gel filling in T2-weighted transverse and (B) sagittal planes. A residual broad-based solid mass of 2.6 cm is seen (white arrowheads) originating from the right uterine wall and protruding inside the uterine cavity. The cavity is dilated by an organized hematometra, which partially protrude through the cervix. Pelvic free fluid is also present. C: Pap test demonstrated isolated atypical cells or in some clusters (D) with scanty cytoplasm, oval nuclei with fine chromatin and conspicuous nucleoli (C and D, liquid-based cytology, Papanicolaou staining, x200). E: Histologically, a uniform population of tumor cells organized in trabeculae or solid areas with occasional round and slit-like spaces was present (hematoxylin and eosin staining, x100). E, inset: Tumor cells were small with oval nuclei with one clearly visible nucleolus (hematoxylin and eosin staining, x400). F: A different area of the tumor showed cells with rhabdoid features (hematoxylin and eosin staining, x400). F, upper right inset: immunohistochemical expression of cytokeratin AE1/AE3 and (F, lower right inset) of Alpha-inhibin by tumor cells (x100).

182x274mm (300 x 300 DPI)

1  
2  
3  
4  
5  
6  
7  
8  
9  
10  
11  
12  
13  
14  
15  
16  
17  
18  
19  
20  
21  
22  
23  
24  
25  
26  
27  
28  
29  
30  
31  
32  
33  
34  
35  
36  
37  
38  
39  
40  
41  
42  
43  
44  
45  
46  
47  
48  
49  
50  
51  
52  
53  
54  
55  
56  
57  
58  
59  
60

1  
2  
3  
4  
5  
6  
7  
8  
9  
10  
11  
12  
13  
14  
15  
16  
17  
18  
19  
20  
21  
22  
23  
24  
25  
26  
27  
28  
29  
30  
31  
32  
33  
34  
35  
36  
37  
38  
39  
40  
41  
42  
43  
44  
45  
46  
47  
48  
49  
50  
51  
52  
53  
54  
55  
56  
57  
58  
59  
60



T1-weighted post-gadolinium transverse (A) and diffusion-weighted transverse (B, b = 800) images. After injection (A), there is a homogeneous enhancement of the lesion, equal to that of the adjacent uterine wall, but well circumscribed restricted diffusion (B) limited to the pediculated component.

338x166mm (300 x 300 DPI)