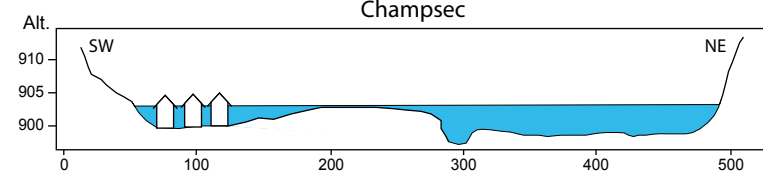
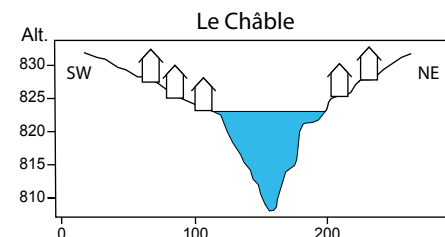
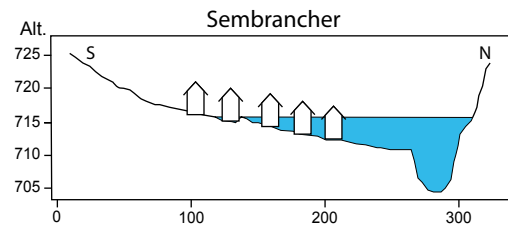
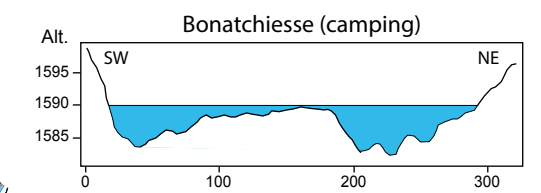
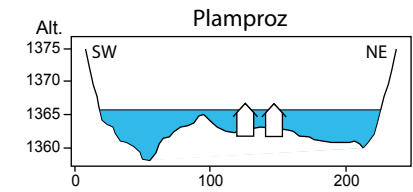
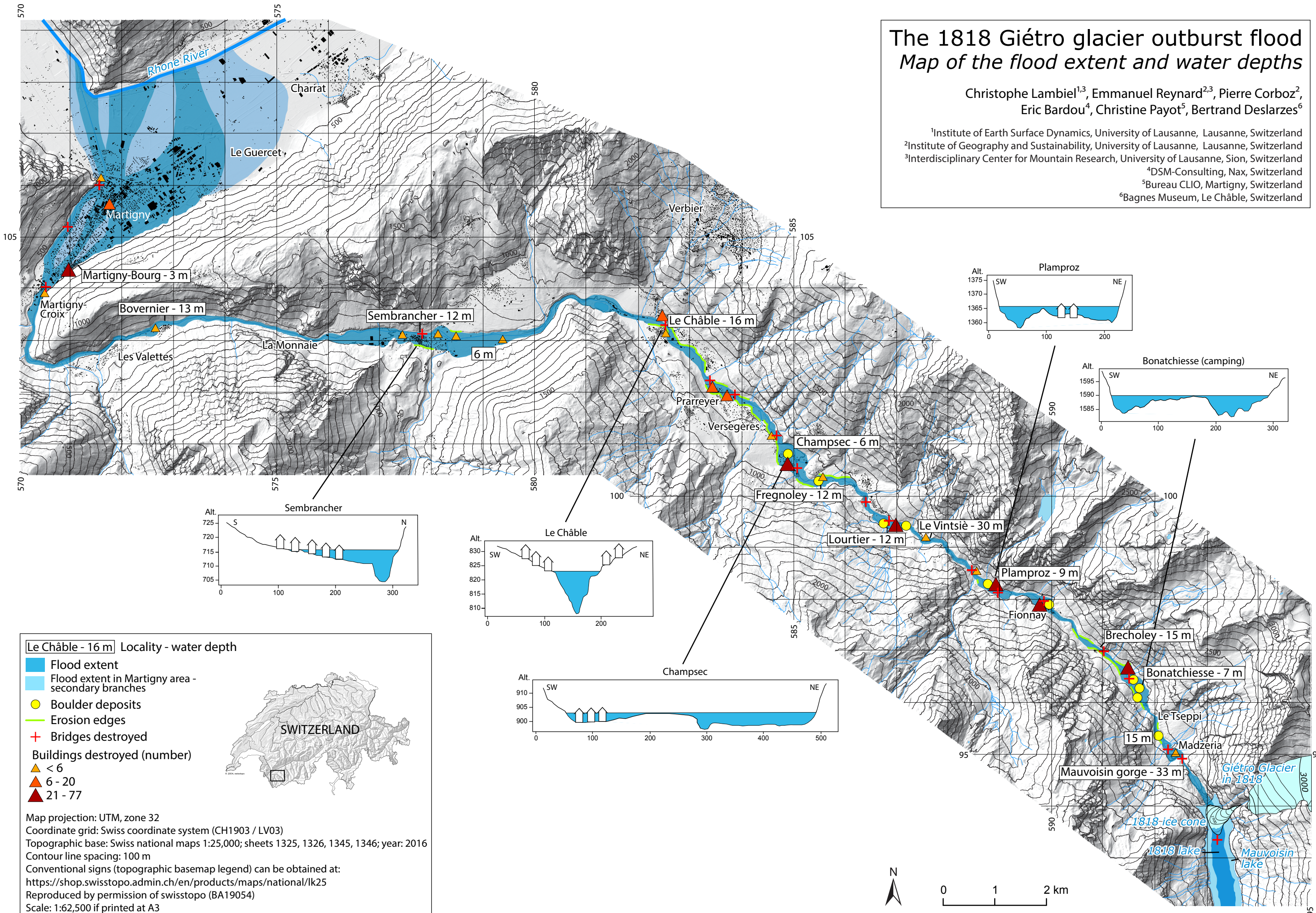


# The 1818 Giétro glacier outburst flood

## Map of the flood extent and water depths

Christophe Lambiel<sup>1,3</sup>, Emmanuel Reynard<sup>2,3</sup>, Pierre Corboz<sup>2</sup>,  
Eric Bardou<sup>4</sup>, Christine Payot<sup>5</sup>, Bertrand Deslarzes<sup>6</sup>

<sup>1</sup>Institute of Earth Surface Dynamics, University of Lausanne, Lausanne, Switzerland  
<sup>2</sup>Institute of Geography and Sustainability, University of Lausanne, Lausanne, Switzerland  
<sup>3</sup>Interdisciplinary Center for Mountain Research, University of Lausanne, Sion, Switzerland  
<sup>4</sup>DSM-Consulting, Nax, Switzerland  
<sup>5</sup>Bureau CLIO, Martigny, Switzerland  
<sup>6</sup>Bagnes Museum, Le Châble, Switzerland



### Le Châble - 16 m Locality - water depth

- Flood extent
- Flood extent in Martigny area - secondary branches
- Boulder deposits
- Erosion edges
- + Bridges destroyed
- Buildings destroyed (number)
- ▲ < 6
- ▲ 6 - 20
- ▲ 21 - 77



Map projection: UTM, zone 32  
 Coordinate grid: Swiss coordinate system (CH1903 / LV03)  
 Topographic base: Swiss national maps 1:25,000; sheets 1325, 1326, 1345, 1346; year: 2016  
 Contour line spacing: 100 m  
 Conventional signs (topographic basemap legend) can be obtained at:  
<https://shop.swisstopo.admin.ch/en/products/maps/national/lk25>  
 Reproduced by permission of swisstopo (BA19054)  
 Scale: 1:62,500 if printed at A3

