

**Serveur Académique Lausannois SERVAL [serval.unil.ch](http://serval.unil.ch)**

## **Author Manuscript**

### **Faculty of Biology and Medicine Publication**

**This paper has been peer-reviewed but does not include the final publisher proof-corrections or journal pagination.**

Published in final edited form as:

**Title:** Mirror extreme BMI phenotypes associated with gene dosage at the chromosome 16p11.2 locus.

**Authors:** Jacquemont S, Reymond A, Zufferey F, Harewood L, Walters RG, Kutalik Z, Martinet D, Shen Y, Valsesia A, Beckmann ND, Thorleifsson G, Belfiore M, Bouquillon S, Campion D, de Leeuw N, de Vries BB, Esko T, Fernandez BA, Fernández-Aranda F, Fernández-Real JM, Gratacòs M, Guilmatre A, Hoyer J, Jarvelin MR, Kooy RF, Kurg A, Le Caignec C, Männik K, Platt OS, Sanlaville D, Van Haelst MM, Villatoro Gomez S, Walha F, Wu BL, Yu Y, Aboura A, Addor MC, Alembik Y, Antonarakis SE, Arveiler B, Barth M, Bednarek N, Béna F, Bergmann S, Beri M, Bernardini L, Blaumeiser B, Bonneau D, Bottani A, Boute O, Brunner HG, Cailley D, Callier P, Chiesa J, Chrast J, Coin L, Coutton C, Cuisset JM, Cuvellier JC, David A, de Freminville B, Delobel B, Delrue MA, Demeer B, Descamps D, Didelot G, Dieterich K, Disciglio V, Doco-Fenzy M, Drunat S, Duban-Bedu B, Dubourg C, El-Sayed Moustafa JS,

In the absence of a copyright statement, users should assume that standard copyright protection applies, unless the article contains an explicit statement to the contrary. In case of doubt, contact the journal publisher to verify the copyright status of an article.



Nature. Author manuscript; available in PMC 2013 May 1.

PMCID: PMC3637175

Published in final edited form as:

HALMS: HALMS619240

[Nature, 2011 Oct; 478\(7367\): 97–102.](#)

Published online 2011 Aug 31. doi: [10.1038/nature10406](https://doi.org/10.1038/nature10406)

INSERM Subrepository

## Mirror extreme BMI phenotypes associated with gene dosage at the chromosome 16p11.2 locus

Sébastien Jacquemont,<sup>1</sup> Alexandre Reymond,<sup>2</sup> Flore Zufferey,<sup>1</sup> Louise Harewood,<sup>2</sup> Robin G. Walters,<sup>3</sup> Zoltán Kutalik,<sup>4,5</sup> Danielle Martinet,<sup>1</sup> Yiping Shen,<sup>6,7</sup> Armand Valsesia,<sup>4,5,8</sup> Noam D. Beckmann,<sup>1</sup> Gudmar Thorleifsson,<sup>9</sup> Marco Belfiore,<sup>1</sup> Sonia Bouquillon,<sup>10</sup> Dominique Campion,<sup>11,12</sup> Nicole De Leeuw,<sup>13</sup> Bert B. A. De Vries,<sup>13</sup> Tõnu Esko,<sup>12,14</sup> Bridget A. Fernandez,<sup>15</sup> Fernando Fernández-Aranda,<sup>16</sup> José Manuel Fernández-Real,<sup>17</sup> Mònica Gratacòs,<sup>18</sup> Audrey Guilmatre,<sup>11,12</sup> Juliane Hoyer,<sup>19</sup> Marjo-Riitta Jarvelin,<sup>20</sup> Frank R. Kooy,<sup>21</sup> Ants Kurg,<sup>14</sup> Cédric Le Caignec,<sup>22</sup> Katrin Männik,<sup>14</sup> Orah S. Platt,<sup>6</sup> Damien Sanlaville,<sup>23</sup> Mieke M. Van Haelst,<sup>3,24</sup> Sergi Villatoro Gomez,<sup>18</sup> Faida Walha,<sup>2</sup> Bai-Lin Wu,<sup>6,25</sup> Yongguo Yu,<sup>6,26</sup> Azzedine Aboura,<sup>27</sup> Marie-Claude Addor,<sup>1</sup> Yves Alembik,<sup>28</sup> Stylianos E. Antonarakis,<sup>29</sup> Benoît Arveiler,<sup>30,31</sup> Magalie Barth,<sup>32</sup> Nathalie Bednarek,<sup>33</sup> Frédérique Béna,<sup>29</sup> Sven Bergmann,<sup>4,5,34</sup> Mylène Beri,<sup>35</sup> Laura Bernardini,<sup>36</sup> Bettina Blaumeiser,<sup>21</sup> Dominique Bonneau,<sup>32</sup> Armand Bottani,<sup>29</sup> Odile Boute,<sup>37</sup> Han G. Brunner,<sup>13</sup> Dorothée Cailley,<sup>31</sup> Patrick Callier,<sup>38</sup> Jean Chiesa,<sup>39</sup> Jacqueline Chrast,<sup>2</sup> Lachlan Coin,<sup>3</sup> Charles Coutton,<sup>40,41,42</sup> Jean-Marie Cuisset,<sup>43</sup> Jean-Christophe Cuvelier,<sup>43</sup> Albert David,<sup>22</sup> Bénédicte De Freminville,<sup>44</sup> Bruno Delobel,<sup>45</sup> Marie-Ange Delrue,<sup>30,31</sup> Bénédicte Demeer,<sup>46</sup> Dominique Descamps,<sup>47</sup> Gérard Didelot,<sup>2</sup> Klaus Dieterich,<sup>48</sup> Vittoria Disciglio,<sup>49</sup> Martine Doco-Fenzy,<sup>50</sup> Séverine Drunat,<sup>27</sup> Bénédicte Duban-Bedu,<sup>45</sup> Christèle Dubourg,<sup>51</sup> Julia S. El-Sayed Moustafa,<sup>3</sup> Paul Elliott,<sup>52</sup> Brigitte H. W. Faas,<sup>13,53</sup> Laurence Faivre,<sup>54</sup> Anne Faudet,<sup>55</sup> Florence Fellmann,<sup>1</sup> Alessandra Ferrarini,<sup>1</sup> Richard Fisher,<sup>56</sup> Elisabeth Flori,<sup>28</sup> Lukas Forer,<sup>57</sup> Dominique Gaillard,<sup>50</sup> Marion Gerard,<sup>27</sup> Christian Gieger,<sup>58</sup> Stefania Gimelli,<sup>29,59</sup> Giorgio Gimelli,<sup>60</sup> Hans J. Grabe,<sup>61</sup> Agnès Guichet,<sup>32</sup> Olivier Guillin,<sup>11</sup> Anna-Liisa Hartikainen,<sup>59</sup> Delphine Heron,<sup>55</sup> Loyse Hippolyte,<sup>1</sup> Muriel Holder,<sup>37</sup> Georg Homuth,<sup>62</sup> Bertrand Isidor,<sup>22</sup> Sylvie Jaillard,<sup>51</sup> Zdenek Jaros,<sup>63</sup> Susana Jiménez-Murcia,<sup>16</sup> Géraldine Joly Helas,<sup>64</sup> Philippe Jonveaux,<sup>35</sup> Satu Kaksonen,<sup>65</sup> Boris Keren,<sup>55</sup> Anita Kloss-Brandstätter,<sup>57</sup> Nine V. A. M. Knoers,<sup>24</sup> David A. Koolen,<sup>13</sup> Peter M. Kroisel,<sup>66</sup> Florian Kronenberg,<sup>57</sup> Audrey Labalme,<sup>23</sup> Emilie Landais,<sup>50</sup> Elisabetta Lapi,<sup>67</sup> Valérie Layet,<sup>68</sup> Solenn Legallic,<sup>11</sup> Bruno Leheup,<sup>69</sup> Barbara Leube,<sup>70</sup> Suzanne Lewis,<sup>71</sup> Josette Lucas,<sup>51</sup> Kay D. Macdermot,<sup>72</sup> Pall Magnusson,<sup>73</sup> Christian R. Marshall,<sup>74</sup> Michèle Mathieu-Dramard,<sup>46</sup> Mark I. McCarthy,<sup>75,76</sup> Thomas Meitinger,<sup>77</sup> Maria Antonietta Mencarelli,<sup>49</sup> Giuseppe Merla,<sup>78</sup> Alexandre Moerman,<sup>37</sup> Vincent Mooser,<sup>79</sup> Fanny Morice-Picard,<sup>30,31</sup> Mafalda Mucciolo,<sup>49</sup> Matthias Nauck,<sup>80</sup> Ndeye Coumba Ndiaye,<sup>81</sup> Ann Nordgren,<sup>82</sup> Laurent Pasquier,<sup>51</sup> Florence Petit,<sup>37</sup> Rolf Pfundt,<sup>13</sup> Ghislaine Plessis,<sup>83</sup> Evica Rajcan-Separovic,<sup>84</sup> Gian Paolo Ramelli,<sup>85</sup> Anita Rauch,<sup>86</sup> Roberto Ravazzolo,<sup>87</sup> Andre Reis,<sup>19</sup> Alessandra Renieri,<sup>49</sup> Cristobal Richart,<sup>88</sup> Janina S. Ried,<sup>58</sup> Claudine Rieubland,<sup>89</sup> Wendy Roberts,<sup>90</sup> Katharina M. Roetzer,<sup>66</sup> Caroline Rooryck,<sup>30,31</sup> Massimiliano Rossi,<sup>23</sup> Evald Saemundsen,<sup>91</sup> Véronique Satre,<sup>40,41</sup> Claudia Schurmann,<sup>62</sup> Engilbert Sigurdsson,<sup>92</sup> Dimitri J. Stavropoulos,<sup>93</sup> Hreinn Stefansson,<sup>9</sup> Carola Tengström,<sup>94</sup> Unnur Thorsteinsdóttir,<sup>9</sup> Francisco J. Tinahones,<sup>95</sup> Renaud Touraine,<sup>44</sup> Louis Vallée,<sup>43</sup> Ellen Van Binsbergen,<sup>24</sup> Nathalie Van Der Aa,<sup>21</sup> Catherine Vincent-Delorme,<sup>96</sup> Sophie Visvikis-Siest,<sup>81</sup> Peter Vollenweider,<sup>97</sup> Henry Völzke,<sup>98</sup> Anneke T. Vulto-Van Silfhout,<sup>13</sup> Gérard Waeber,<sup>97</sup> Carina Wallgren-Pettersson,<sup>99</sup> Robert M. Witwicky,<sup>2</sup> Simon Zwolinski,<sup>56</sup> Joris Andrieux,<sup>10</sup> Xavier Estivill,<sup>18</sup> James F. Gusella,<sup>7</sup> Omar Gustafsson,<sup>9</sup> Andres Metspalu,<sup>12,14</sup> Stephen W. Scherer,<sup>100</sup> Kari Stefansson,<sup>9</sup> Alexandra I. F. Blakemore,<sup>3</sup> Jacques S. Beckmann,<sup>1,4,\*</sup> and Philippe Froguel,<sup>3,101</sup>

<sup>1</sup> Service de génétique médicale CHU Vaudois, 1011 Lausanne, CH

<sup>2</sup> Centre de génomique intégrative Université de Lausanne, 1015 Lausanne, CH

<sup>3</sup> Department of Genomics of Common Disease Imperial College London, Hammersmith hospital, London W12 0NN, GB

<sup>4</sup> Department of Medical Genetics University of Lausanne, CH

<sup>5</sup> SIB, Swiss Institute of Bioinformatics Swiss Institute of Bioinformatics, Quartier Sorge - Batiment Genopode 1015 Lausanne Switzerland, CH

<sup>6</sup> Laboratory Medicine Children's Hospital Boston, Boston, Massachusetts 02115, US

<sup>7</sup> Center for Human Genetic Research Massachusetts General Hospital, Boston, Massachusetts 02114, US

<sup>8</sup> Ludwig Institute for Cancer Research Université de Lausanne, 1015 Lausanne, CH

<sup>9</sup> deCODE Genetics deCODE genetics, Reykjavik, IS

<sup>10</sup> Laboratoire de Génétique Médicale Hôpital Jeanne de Flandre, CHRU Lille, 59037 Lille Cedex, FR

<sup>11</sup> Génétique médicale et fonctionnelle du cancer et des maladies neuropsychiatriques INSERM : U614, Université de Rouen, UFR de Médecine et de Pharmacie 22, Boulevard Gambetta 76183 Rouen cedex, FR

<sup>12</sup> Estonian Genome and Medicine University of Tartu, 51010 Tartu, EE

<sup>13</sup> Department of human genetics Radboud University Nijmegen Medical Centre, Nijmegen Centre for Molecular Life Sciences, Institute for Genetic and Metabolic Disorders, 6500 HB Nijmegen, NL

<sup>14</sup> Institute of Molecular and Cell Biology University of Tartu, 51010 Tartu, EE

- 15 Disciplines of Genetics and Medicine Memorial University of Newfoundland, St. John's Newfoundland, CA
- 16 IDIBELL, Department of Psychiatry University Hospital of Bellvitge, CIBERobn Fisiopatología de la Obesidad y Nutrición, 08907 Barcelona, ES
- 17 Section of Diabetes, Endocrinology and Nutrition University Hospital of Girona, Biomedical Research Institute "Dr Josep Trueta", CIBERobn Fisiopatología de la Obesidad y Nutrición, 17007 Girona, ES
- 18 CRG-UPF, Center for Genomic Regulation CIBER de Epidemiología y Salud Pública (CIBERESP), C/ Dr. Aiguader, 88 08003 Barcelona, Catalonia, Spain, ES
- 19 Institute of Human Genetics Friedrich-Alexander University Erlangen-Nuremberg, 91054 Erlangen, DE
- 20 Department of child and adolescent health National Institute for Health and Welfare, University of Oulu, Institute of Health Sciences and Biocenter Oulu, Box 310, 90101 Oulu, FI
- 21 Department of Medical Genetics University Hospital Antwerp, 2650 Edegem, BE
- 22 Service d'ORL et de Chirurgie Cervicofaciale INSERM : U587, Hôpital d'Enfants Armand-Trousseau, Université Pierre et Marie Curie - Paris 6, Paris, FR
- 23 Service de cytogénétique constitutionnelle Hospices Civils de Lyon, CHU de Lyon, Centre Neurosciences et Recherche, 69000 Lyon, FR
- 24 Department of Medical Genetics University Medical Center Utrecht, 3584 EA Utrecht, NL
- 25 Institutes of Biomedical Science Fudan University, Children's Hospital, 200032 Shanghai, CN
- 26 Shanghai Children's Medical Center Shanghai Children's Medical Center, 200127 Shanghai, CN
- 27 Département de génétique Assistance publique - Hôpitaux de Paris (AP-HP), Hôpital Robert Debré, Université Paris VII - Paris Diderot, 48, boulevard Sérurier 75935 Paris cedex 19, FR
- 28 Service de cytogénétique CHU Strasbourg, Hôpital de Hautepierre, 1 Av Moliere 67098 Strasbourg Cedex, FR
- 29 Génétique médicale Hôpitaux Universitaires de Genève, 1205 Geneva, CH
- 30 MRGM, Maladies Rares - Génétique et Métabolisme Hôpital Pellegrin, Service de Génétique Médicale du CHU de Bordeaux, Université Victor Segalen - Bordeaux II : EA4576, 146 rue Léo-Saignat - 33076 Bordeaux Cedex, FR
- 31 Service de génétique médicale CHU Bordeaux, Groupe hospitalier Pellegrin, Université de Bordeaux, Bordeaux, FR
- 32 Service de génétique [Angers] CHU Angers, Université d'Angers, rue Larrey, 49100 Angers, FR
- 33 URCA, Université de Reims Champagne-Ardenne Ministère de l'Enseignement Supérieur et de la Recherche Scientifique, 9 boulevard Paix - 51097 Reims cedex, FR
- 34 Department of Molecular Genetics Weizmann Institute of Science, Rehovot, IL
- 35 Laboratoire de Génétique CHU Nancy, Vandoeuvre les Nancy, FR
- 36 Mendel Laboratory IRCCS Casa Sollievo della Sofferenza Hospital, 71013 San Giovanni Rotondo, IT
- 37 Service de Génétique clinique Hôpital Jeanne de Flandre, CHRU Lille, 2 avenue Oscar Lambret, 59000 Lille, FR
- 38 Laboratoire de cytogénétique CHU Dijon, FR
- 39 Laboratoire de Cytogénétique CHU Nîmes, 30029 Nimes, FR
- 40 Département de génétique et procréation CHU Grenoble, Université Joseph Fourier - Grenoble I, faculté de médecine-pharmacie, Domaine de la Merci, 38706 Grenoble, FR
- 41 AGIM, AGEing and IMagery, CNRS FRE3405 Université Joseph Fourier - Grenoble I, Ecole Pratique des Hautes Etudes, CNRS : UMR5525, Faculté de médecine de Grenoble, 38700 La Tronche, FR
- 42 Laboratoire de biochimie et génétique moléculaire CHU Grenoble, 38043 Grenoble, FR
- 43 Service de Neuropédiatrie CHRU Lille, Hôpital Roger Salengro, 59037 Lille, FR
- 44 Service de génétique CHU Saint-Etienne, Hôpital nord, 42055 St Etienne, FR
- 45 Centre de Génétique Chromosomique GHICL, Hôpital Saint Vincent de Paul, Boulevard de Belfort B.P. 387 59020 LILLE CEDEX, FR
- 46 Service de génétique médicale CHU AMIENS, Place Victor Pauchet, 80054 Amiens Cedex 1, FR
- 47 Centre hospitalier de Béthune Centre hospitalier de Béthune, 62408 Bethune, FR
- 48 Service de Génétique Clinique CHU Grenoble, 38043 Grenoble, FR
- 49 Department of Biotechnology Università degli studi di Siena, Medical Genetics, 53100 Siena, IT
- 50 Service de Génétique CHU Reims, Hôpital Maison Blanche, IFR 53, 51092 Reims, FR
- 51 IGDR, Institut de Génétique et Développement de Rennes CNRS : UMR6061, Université de Rennes 1, IFR140, Faculté de Médecine - CS 34317 2 Av du Professeur Léon Bernard 35043 RENNES CEDEX, FR
- 52 Department of Epidemiology and Public Health Imperial College London, St Mary's Campus, Norfolk Place, London W2 1PG, GB
- 53 Department of Human Genetics, Radboud University Medical Centre, PO Box 9101, 6500 HB Nijmegen Department of Human Genetics, Radboud University Medical Centre, PO Box 9101, 6500 HB Nijmegen, NL
- 54 Department of Experimental Cardiology Heart Failure Research Center (HFRC), Academic Medical Center (AMC), Meibergdreef 9, PO Box 22660, 1100 DD Amsterdam, NL
- 55 Département de Génétique Cytogénétique et Embryologie Assistance publique - Hôpitaux de Paris (AP-HP), Hôpital Pitié-Salpêtrière, Université Paris VI - Pierre et Marie Curie, 47-83, boulevard de l'Hôpital 75651 PARIS Cedex 13, FR
- 56 Institute of human genetics International Centre for Life, Newcastle Upon Tyne NE1 4EP, GB
- 57 Division of genetic epidemiology Innsbruck Medical University, Department of Medical Genetics, Molecular and Clinical Pharmacology, 6020 Innsbruck, AT
- 58 Institute of Experimental Medicine Academy of Sciences of the Czech Republic, Vídeňská 1083 142 20 Prague, CZ
- 59 Department of Obstetrics and Gynecology Institute of Clinical Medicine, University of Oulu, 90570 Oulu, FI
- 60 Laboratorio di citogenetica G. Gaslini Institute, 16147 Genova, IT
- 61 Department of Psychiatry and Psychotherapy Ernst-Moritz-Arndt University Greifswald, 17475 Greifswald and D-18437 Stralsund, DE
- 62 Interfaculty Institute for Genetics and Functional Genomics Ernst-Moritz-Arndt University Greifswald, D-17487 Greifswald, DE
- 63 Abteilung für Kinder und Jugendheilkunde Landeskrankenhaus Waldviertel Zwettl, 3910 Zwettl, AT
- 64 Service de Génétique CHU Rouen, FR
- 65 The Habilitation Unit of Folkhalsan The Habilitation Unit of Folkhalsan, Folkhalsan, SF 00250 Helsinki, FI
- 66 Institute of human genetics Medical University of Graz, AT
- 67 Medical Genetics Unit Children's Hospital Anna Meyer, 50139 Firenze, IT
- 68 Unité de Cytogénétique et Génétique Médicale Hôpital Gustave Flaubert, Groupe Hospitalier du Havre, 76600 Le Havre, FR

- <sup>69</sup>Service de médecine infantile III et génétique clinique CHU Nancy, Université Henri Poincaré - Nancy I, PRES de l'université de Lorraine, 54511 Vandoeuvre les Nancy,FR
- <sup>70</sup>Institute of Human Genetics and Anthropology Heinrich-Heine University Hospital Duesseldorf, D-40001 Duesseldorf,DE
- <sup>71</sup>Department of Medical Genetics University of British Columbia, Child and Family Research Institute, Vancouver V6H 3N1,CA
- <sup>72</sup>North West Thames Regional Genetics Service Northwick Park & St Marks Hospital, Harrow HA1 3UJ,GB
- <sup>73</sup>Child and Adolescent Psychiatry Landspítali University Hospital, IS-105 Reykjavík,IS
- <sup>74</sup>The Centre for Applied Genomics and Program in Genetics and Genomic Biology The Hospital for Sick Children, Toronto, Ontario, M5G 1L7,CA
- <sup>75</sup>OCDEM, Oxford Centre for Diabetes, Endocrinology and Metabolism University of Oxford, Churchill Hospital Oxford OX3 7LJ,GB
- <sup>76</sup>Wellcome Trust Centre for Human Genetics University of Oxford, Oxford,GB
- <sup>77</sup>Institute of Human Genetics Helmholtz Zentrum München, Technische Universität München (TUM), German Research Center for Environmental Health, 85764 Neuherberg,DE
- <sup>78</sup>Medical Genetics Unit IRCCS Casa Sollievo della Sofferenza Hospital, 71013 San Giovanni Rotondo,IT
- <sup>79</sup>Genetics, GlaxoSmithKline R&D GlaxoSmithKline, 720 Swedeland Road, King of Prussia, Pennsylvania 19406,US
- <sup>80</sup>Institute of Clinical Chemistry and Laboratory Medicine Ernst-Moritz-Arndt University Greifswald, D-17475 Greifswald,DE
- <sup>81</sup>Génétique cardiovasculaire Université Henri Poincaré - Nancy I : EA4373, 54000 Nancy,FR
- <sup>82</sup>Department of Molecular Medicine and Surgery Karolinska Institutet, SE
- <sup>83</sup>Service de génétique CHU Caen, Hôpital Clémenceau, Avenue Georges Clémenceau, Caen,FR
- <sup>84</sup>Department of Pathology University of British Columbia, Child and Family Research Institute, Vancouver, British Columbia V5Z 4H4,CA
- <sup>85</sup>Division of pediatrics Ospedale San Giovanni, 6500 Bellinzona,CH
- <sup>86</sup>Institute of Medical Genetics University of Zurich, 8603 Schwerzenbach,CH
- <sup>87</sup>Department of pediatrics and CEBR University of Genova, G. Gaslini Institute, 16126 Genova,IT
- <sup>88</sup>Department of Internal Medicine University Hospital Juan XXIII, Universitat Rovira y Virgili, Ciber Fisiopatologia Obesidad y Nutricion (CIBEROBN), Instituto Salud Carlos III, 43005 Tarragona,ES
- <sup>89</sup>Division of Human Genetics University of Bern, Department of Paediatrics, Inselspital, 3010 Bern,CH
- <sup>90</sup>Autism Research Unit The Hospital for Sick Children and Bloorview Kids Rehabilitation, University of Toronto, Toronto, Ontario, M5G 1Z8,CA
- <sup>91</sup>State Diagnostic Counseling Center, 200 Kopavogur,IS
- <sup>92</sup>University of Iceland University of Iceland, Department of Electrical and Computer Engineering, University of Iceland, Hjarðarhaga 2-6, 107 Reykjavík, Iceland,;IS
- <sup>93</sup>Department of Pediatric Laboratory Medicine Hospital for Sick Children, Toronto, Ontario M5G 1X8,CA
- <sup>94</sup>Genetic Services Rinnekoti Research Foundation, Kumputie 1, SF-02980 Espoo,FI
- <sup>95</sup>Department of Endocrinology and Nutrition Clinic Hospital of Virgen de la Victoria, Ciber Fisiopatologia y Nutricion (CIBEROBN), Instituto Salud Carlos III, 29010 Malaga,ES
- <sup>96</sup>Centre de Maladies Rares Anomalies du Développement Nord de France, CH Arras - CHRU Lille, 59000 Arras,FR
- <sup>97</sup>Department of Internal Medicine Centre Hospitalier Universitaire Vaudois, 1011 Lausanne,CH
- <sup>98</sup>Institute for Community Medicine Ernst-Moritz-Arndt University Greifswald, D-17475 Greifswald,DE
- <sup>99</sup>Department of Medical Genetics University of Helsinki, Folkhälsan Institute of Genetics, Haartman Institute, 00251 Helsinki,FI
- <sup>100</sup>The Centre for Applied Genomics The Hospital for Sick Children, McLaughlin Centre, Department of Molecular Genetics, University of Toronto, Toronto, Ontario, Canada M5G 1L7,CA
- <sup>101</sup>IBLI, Institut de biologie de Lille - IBL Institut Pasteur de Lille, CNRS : UMR8090, Université Lille I - Sciences et technologies, Université Lille II - Droit et santé, Institut de Biologie de Lille 1 Rue du Professeur Calmette - 447 59021 LILLE CEDEX,FR
- \* Correspondence should be addressed to: Jacques Beckmann ; Email: [Jacques.Beckmann@chuv.ch](mailto:Jacques.Beckmann@chuv.ch)

[Copyright notice](#) and [Disclaimer](#)

## Abstract

Both underweight and obesity have been associated with increased mortality<sup>1,2</sup>. Underweight, defined as body mass index (BMI)  $\leq 18,5 \text{ kg/m}^2$  in adults<sup>3</sup> and  $\leq -2$  standard deviations (SD) in children<sup>4,5</sup>, is the main sign of a series of heterogeneous clinical conditions such as failure to thrive (FTT)<sup>6-8</sup>, feeding and eating disorder and/or anorexia nervosa<sup>9,10</sup>. In contrast to obesity, few genetic variants underlying these clinical conditions have been reported<sup>11, 12</sup>. We previously demonstrated that hemizygosity of a ~600 kb region on the short arm of chromosome 16 (chr16:29.5–30.1Mb), causes a highly-penetrant form of obesity often associated with hyperphagia and intellectual disabilities<sup>13</sup>. Here we show that the corresponding reciprocal duplication is associated with underweight. We identified 138 (132 novel cases) duplication carriers (108 unrelated carriers) from over 95,000 individuals clinically-referred for developmental or intellectual disabilities (DD/ID), psychiatric disorders or recruited from population-based cohorts. These carriers show significantly reduced postnatal weight (mean Z-score  $-0.6$ ;  $p=4.4 \times 10^{-4}$ ) and BMI (mean Z-score  $-0.5$ ;  $p=2.0 \times 10^{-3}$ ). In particular, half of the boys younger than 5 years are underweight with a probable diagnosis of FTT, while adult duplication carriers have an 8.7-fold ( $p=5.9 \times 10^{-11}$ ; CI<sub>95</sub>=[4.5–16.6]) increased risk of being clinically underweight. We observe a significant trend towards increased severity in males, as well as a depletion of male carriers among non-medically ascertained cases. These features are associated with an unusually high frequency of selective and restrictive feeding behaviours and a significant reduction in head circumference (mean Z-score  $-0.9$ ;  $p=7.8 \times 10^{-6}$ ). Each of the observed

phenotypes is the converse of one reported in carriers of deletions at this locus, correlating with changes in transcript levels for genes mapping within the duplication but not within flanking regions. The reciprocal impact of these 16p11.2 copy number variants suggests that severe obesity and being underweight can have mirror etiologies, possibly through contrasting effects on eating behaviour.

**Keywords:** Adolescent, Adult, Aged, Aging, Body Height, genetics, Body Mass Index, Case-Control Studies, Child, Child, Preschool, Chromosomes, Human, Pair 16, Cohort Studies, Comparative Genomic Hybridization, Developmental Disabilities, genetics, Energy Metabolism, Europe, Female, Gene Dosage, Gene Duplication, Gene Expression Profiling, Genetic Predisposition to Disease, Genome-Wide Association Study, Head, anatomy & histology, Heterozygote, Humans, Infant, Infant, Newborn, Male, Mental Disorders, Middle Aged, Mutation, North America, Obesity, Phenotype, RNA, Messenger, analysis, Sequence Deletion, Thinness, Transcription, Genetic, Young Adult

---

Copy number variants at the 16p11.2 locus have been associated with cognitive disorders including autism (deletions) and schizophrenia (duplications)[14–19](#), conditions that have been suggested to lie at opposite ends of a single spectrum of psychiatric phenotypes[20](#). We and others have reported that deletion of this region spanning 28 genes ([Supplementary Table S1](#)) increases the risk of morbid obesity 43-fold ([Supplementary Figure S1](#))[13:21](#). We hypothesized that the reciprocal duplication, with its resulting increase in gene dosage, may influence BMI in a converse manner. The duplication was identified in 73 out of 31,424 patients with DD/ID, a frequency consistent with previous reports[17](#) ([Table 1](#)). Four additional cases were identified among 1,080 patients affected by bipolar disease or schizophrenia. Compared to its prevalence in seven European population-based GWAS cohorts[22–24](#) (31 out of 58,635 individuals), the duplication was significantly more frequent in both the DD/ID cohorts ( $p=4.23\times 10^{-13}$ ; OR=4.4, CI<sub>95</sub>=[2.9–6.9]) and the psychiatric cohorts ( $p=3.6\times 10^{-3}$ ; OR=7.0, CI<sub>95</sub>=[1.8–19.9]) ([Table 1](#)) strengthening previous reports of similar associations[16:17](#). Our data do not support a two-hit model[25](#) for the effects of 16p11.2 duplications or deletions ([Supplementary Text and Table S2](#)).

We compared available data on weight, height and BMI for 106 independent duplication carriers (including published cases) to those in gender-, age- and geographically-matched reference populations ([Table 2](#), [Supplementary Tables S3 and S4, Methods](#)). The duplication was strongly associated with lower weight (mean Z-score  $-0.56$ ;  $p=4.4\times 10^{-4}$ ) and BMI (mean Z-score  $-0.47$ ;  $p=2.0\times 10^{-3}$ ) ([Table 2](#), [Supplementary Table S5](#)). Birth parameters ( $n=48$ ) were normal indicating a postnatal effect. Adults carrying the duplication had a relative risk (RR) of being clinically underweight (BMI < 18.5)[26](#) of 8.7, CI<sub>95</sub>=[4.5–16.6] ( $p=5.9\times 10^{-11}$ ) ([Methods](#)). Concordantly, none of the 3,544 patients in our obesity cohorts[13:21](#) carried the duplication ([Table 1](#)).

To further investigate these associations, we carried out separate analyses of carrier patients (DD/ID and psychiatric) and non-medically ascertained carriers (population-based cohorts plus 11 transmitting parents and three other affected first-degree relatives for whom data were available) ([Table 2](#)). Each category exhibited significantly lower weight and BMI with similar effect sizes. However, the proportion of underweight cases (BMI  $\leq -2$  SD)[26](#) was higher in the first than in the second group (17/76 compared to 2/40;  $p=0.017$ ). Note that the impact of the duplication on underweight status might be understated due to prescription of antipsychotic treatments, often associated with weight gain[27](#) ([Supplementary Table S6](#)).

Having demonstrated an association of the duplication with underweight, we investigated the contribution of gender to the resulting phenotypes ([Figure 1](#), [Supplementary Figure S2](#) and [Table S7](#)). In DD/ID patients, the impact of the duplication on being underweight is stronger in males – the effect in females is in the same direction, but is both smaller and statistically non-significant ([Table 2](#)). A similar and significant difference ( $p=0.0173$ ) was observed in adult carriers (all groups combined): the RR of being underweight for males is 24.1 (CI<sub>95</sub>=[9.5–61.2],  $p=2.2\times 10^{-11}$ ) and only 4.9 for females (CI<sub>95</sub>=[2.0–12.3],  $p=6.7\times 10^{-4}$ ). A gender bias was also observed in the ascertainment of DD/ID duplication carriers, in which we have an excess of males (51M:33F,  $p=0.044$ ). By contrast, carriers from the general population exhibited a strong overrepresentation of females (10M:21F,  $p=0.035$ ) ([Supplementary Text](#)). A similar bias was observed among transmitting parents (7M:23F,  $p=5.53\times 10^{-4}$ ). Thus, there is an overrepresentation of males in the medically ascertained group and a depletion in the non-medically ascertained one. We suggest that males are

more likely than females to present severe phenotypes, and that this may account for the observed gender bias, as severely affected males are less likely to be recruited to adult population cohorts or be reproductively successful.

As previously reported<sup>28</sup>, the duplication was also associated with reduced head circumference (HC; mean Z-score  $-0.89$ ;  $p=7.8\times 10^{-6}$ ) (Figure 1), 26.7% presenting with microcephaly, while carriers of the reciprocal deletion had an increased HC (mean Z-score  $+0.57$ ;  $p=1.79\times 10^{-5}$ ) (Supplementary Table S8, Figure S3), demonstrating an additional instance of a mirror phenotype associated with reciprocal copy number changes at this locus. Notably, HC Z-scores correlate positively with those of BMI in carriers of both the duplication ( $\rho=0.37$ ;  $p=2.65\times 10^{-3}$ ) and the deletion ( $\rho=0.42$ ;  $p=1.9\times 10^{-5}$ ) (Supplementary Methods). This suggests that HC and BMI may be regulated by a common pathway or that a causal relationship exists between these two traits in these patients. A full list of malformations and secondary phenotypes reported in duplication carriers ascertained for DD/ID is available in Supplementary Table S9.

In view of their importance in obesity and underweight, the clinical reports of duplication carriers were screened for evidence of modified eating behaviours. Consequently, we carried out multiplex ligation-dependent probe amplification (MLPA, Supplementary Table S10) to screen for 16p11.2 rearrangements in 441 patients diagnosed with ED including anorexia nervosa (AN), bulimia and binge eating disorder (Table 1, Supplementary Text). No duplications of the entire region were identified, but one out of 109 AN patients carried an atypical 136 kb duplication that encompasses the *SPN* and *QPRT* genes (Supplementary Figure S4). This smaller duplication is currently the subject of further investigations, as it potentially delineates a critical region affecting eating behaviour.

Large genomic structural variants are known to affect the expression of genes not only within the affected region but also at a distance<sup>29-32</sup>. We therefore measured relative transcript levels in lymphoblastoid cell-lines of 27 genes mapping within the rearrangement or nearby (Supplementary Tables S1 and S11): six from deletion carriers, five from duplication carriers and ten from gender- and age-matched controls (Supplementary Table S12). Expression levels correlated positively with gene dosage for all genes within the copy number variable region (Figure 2) consistent with published partial results from adipose tissue<sup>13</sup>. Mean relative transcript levels in deletion and duplication carriers were, respectively, 67% and 214% of the levels measured in controls (Supplementary Table S13). While genes proximal (centromeric) to the rearrangement interval showed no significant variation in relative transcript levels between patients and controls (Figure 2), distal (telomeric) genes showed a significant alteration in relative expression. While lymphoblastoid cells may not recapitulate obesity-relevant tissues, previous experiments have shown a high degree of correlation between expression levels in different tissues/cell lines<sup>29</sup>, suggesting that the same pathways may be similarly disrupted in different cell lineages. Thus, the involvement of these distal genes in the control of BMI in our study subjects seems unlikely.

Our study demonstrates the power of very large screens ( $>95,000$  samples, the biggest of its kind so far) to characterize the clinical and molecular correlates of a rare functional genomic variant. We unambiguously demonstrate that carrying the 16p11.2 duplication confers a high risk of being clinically underweight and show that reciprocal changes in gene dosage at this locus result in multiple mirror phenotypes. As in the schizophrenia/autism<sup>20,34</sup> and microcephaly/macrocephaly<sup>28</sup> dualisms, abnormal eating behaviours, such as hyperphagia and anorexia, could represent opposite pathological manifestations of a common energy balance mechanism, although the precise relationships between these mirror phenotypes remain to be determined. We surmise that abnormal brain volume, thus neuronal circuitry, both cognitive function and eating behaviour, the latter possibly being the basis for the observed impact on BMI. Consistent with this are previous reports that a subgroup of children with microcephaly show concomitant reduction in weight percentile<sup>35</sup>. Our findings also support the observation that severe overweight and underweight phenotypes correlate with lower cognitive functioning<sup>7,36</sup>. Thus, abnormal food intake may be a direct result of particular neurodevelopmental disorders. Although it is possible that the 16p11.2 region encodes distinct genes specific for each trait, a more parsimonious hypothesis is that these different clinical manifestations of central nervous system dysfunction are all secondary to the disruption of a single gene-dosage-sensitive neurodevelopmental step. Further resolution of this issue may require identification of additional patients with rare atypical rearrangements in this region.

## METHODS SUMMARY

---

**Underweight** is defined in adults and individuals of less than 18 years of age as BMI  $\leq$  18.5 and Z-score  $\leq$  -2, respectively.

### Statistics

Two-sided Fisher's exact test was used to compare frequencies of the rearrangement in patients and controls. Z-scores were computed for all data using gender-, age- and geographically-matched reference populations. One-sided *t*-test was performed to test duplication carriers for lower than zero BMI, height, weight and HC Z-score values. We used Kruskal-Wallis to test differences in gene expression patterns. P-value thresholds were defined (by permutation) in order to control the false discovery rate at 5%. Relative risk of being underweight was calculated as the ratio of the fraction of underweight individuals among duplication carriers versus our control group.

### CNV discovery

16p11.2 duplication and deletion carriers were identified through various procedures: (i) CGH with Agilent (Santa Clara, CA) 44K, 60K, 105K, 180K, 244K arrays; (ii) Illumina (San Diego, CA) Human317, Human370, HumanHap550, Human610 and 1M BeadChips; (iii) Affymetrix (Santa Clara, CA) 6.0, 250K genotyping arrays; (iv) QMPSF, (v) FISH and/or (vi) MLPA. CNV analyses of GWAS data were variously carried out using cnvHap, a moving window average intensity procedure, a Gaussian Mixture Model, Circular Binary Segmentation, QuantiSNP, PennCNV, BeadStudio GT module and Birdseed. At least two independent algorithms were used for each cohort.

### Expression analyses

lymphoblastoid cell lines were established from carriers and controls. SYBR Green quantitative PCR was performed to assess relative expression of genes.

## ONLINE METHODS

---

### Patients referred for intellectual disabilities and developmental delay

Patients with cognitive deficits are routinely referred to clinical genetics for etiological work-ups including aCGH. We surveyed 28 cytogenetic centers in Europe and North America ([Supplementary Table S3](#)), identifying 31,424 patients ascertained for developmental delay, intellectual disabilities and/or malformations. Clinical ascertainment was as follows: developmental delay and mental retardation (MR): 51.0%, autism spectrum disorder (ASD) with or without MR: 14.4%, language delay with or without MR: 42.9%, malformations with MR: 27.6%, and malformations without MR: 4.8%.

These analyses were performed for clinical diagnostic purposes, all available phenotypic data being those provided anonymously and retrospectively by the clinician ordering the analyses. Consequently, research-based informed consent was not required by the Institutional Review Board of the University of Lausanne, which granted an exemption for this part of the study.

### Patients referred for psychiatric disorders

**Cohort from Rouen** Cases with schizophrenia and cases with bipolar disorder were ascertained at University Hospital, Rouen, France, from consecutive hospitalizations. All psychiatric diagnoses were established according to DSM-IV criteria following review of case notes and direct examination of cases. The Schedule for Affective Disorders and Schizophrenia was used for the clinical assessment of all cases with schizophrenia or schizoaffective disorder and the Diagnostic Interview for Genetic Studies (DIGS) was used in patients with bipolar disorder. The schizophrenia cohort was described before [37](#): 189 cases with schizophrenia and 47 cases with schizoaffective disorder. Post-morbid IQs were available for two-thirds of cases with schizophrenia; 18.0% of these cases had an IQ lower than 70. The bipolar cohort was made up of 150 patients with either bipolar disorder type I or type II. All subjects have given written informed consent and this study was accepted by the local institutional review board.

## General population cohorts

**CoLaus** This prospective population cohort was described previously<sup>22</sup>: 6,188 white individuals aged 35–75 years were randomly selected from the general population in Lausanne, Switzerland. These individuals underwent a detailed phenotypic assessment, and were genotyped using the Affymetrix Mapping 500K array; 5,612 samples passed genotyping quality control. The institutional review board of the University of Lausanne approved this study, and written consent was obtained from all participants.

**NFBC1966** The Northern Finland Birth Cohort 1966 is a prospective birth cohort of almost all individuals born in 1966 in the two northernmost provinces of Finland. Biochemical and DNA samples were collected with informed consent at age 31 years. Genotyping was done using the Illumina Infinium 370cnvDuo array and phenotypic characteristics of the cohort were as previously described<sup>23</sup>. Phenotypic and genotyping data was available for 5,246 subjects after quality control.

**EGCUT** The Estonian Genome Centre at the University of Tartu (EGCUT) maintains a general population based biobank, described in greater detail in <sup>24</sup>. 2994 unrelated subjects were randomly selected among the 48,000 Estonian participants and genotyped using the IlluminaCNV370-Duo or –Quad BeadChips. EGCUT is conducted according to Estonian Gene Research Act. The project was approved by the Ethics Review Committee on Human Research of the University of Tartu. Written informed consent was obtained from all voluntary participants.

**deCODE** Patients and controls were all Icelandic and were recruited from all over Iceland. All participants with ADHD met DSM-IV criteria for ADHD (477 combined type, 250 inattentive type, 58 hyperactive-impulsive type, 40 unspecified). ADHD subjects were recruited from outpatient pediatric, child, and adult psychiatry clinics in Iceland, and diagnoses had been made on the basis of standardized diagnostic assessments and had been reviewed by experienced clinicians <sup>38:39</sup>. Autistic individuals (n=351) met Autism Diagnostic Interview-Revised (ADI-R) criteria and were ascertained through the State Diagnostic Counselling Center and the Department of Child and Adolescent Psychiatry in Iceland. schizophrenia diagnoses were assigned according to Research Diagnostic Criteria (RDC) <sup>40</sup> through the use of the Schedule for Affective Disorders and Schizophrenia Lifetime Version (SADS-L) <sup>41</sup>. Schizophrenia patients (n=657) were recruited from outpatient pediatric, child, and adult psychiatry clinics, and diagnoses had been made on the basis of standardized diagnostic assessments and had been reviewed by experienced clinicians. Recruitment of the psychiatric patients at deCODE has been described in more details elsewhere, ADHD <sup>42</sup>, ASD schizophrenia and the control population <sup>17</sup>. All participants, cases and controls, returned signed informed consents prior to participation in the study. All personal identifiers associated with medical information, questionnaire results, and blood samples were encrypted according to the standards set by the Data Protection Committee of Iceland. All procedures related to this study have been approved by the Data Protection Authority and National Bioethics Committee of Iceland.

**SHIP** The Study of Health in Pomerania (SHIP) is a cross-sectional survey in Western Pomerania, the north-eastern area of Germany <sup>43:44</sup>. A sample from the population aged 20 to 79 years was drawn from population registries. 7,008 subjects were selected randomly from each community, proportional to community population size and stratified by age and gender. Exclusively, individuals with German citizenship and main residency in the study area were included. 4,308 individuals participated to the study and were genotyped on Affymetrix 6.0 SNP arrays. Both genotyped data (after QC filtering) and BMI were available for 4,070 individuals.

**KORA F3/F4** The KORA study is a series of independent population-based epidemiological surveys of participants living in the region of Augsburg, Southern Germany <sup>45</sup>. All survey participants are residents of German nationality identified through the registration office and were examined in 1994/95 (KORA S3) and 1999/2001 (KORA F4). In the KORA S3 study 4,856 subjects (response 75%), and in KORA F4 in total 4,261 subjects have been examined (response 67%). 3,006 subjects participated in a 10-year follow-up examination of S3 in 2004/05 (KORA F3). Individuals for genotyping in KORA F3 and KORA F4 were randomly selected. The age range of the participants was 25 to 74 years of recruitment. Age and sex were self-reported in a questionnaire survey. Height and Weight were measured following a standardized study protocol. Informed consent has been given by all participants. The study has been approved by the local ethics committee.



**French paediatric cohort** The French paediatric cohort was previously published [46](#) and was genotyped using the Illumina Human CNV370-duo array. 581 non-obese children ( $\text{BMI} \leq 90$ th percentile) passed quality control. All participants or their legal guardians gave written informed consent, and all local ethics committees approved the study protocol.

**Stanislas French Cohort** This cohort was described elsewhere [47](#). This family cohort (1006 families) was recruited between 1993–1995 (first visit) at the Center for Preventive Medicine (CMP) of Vandoeuvre-lès-Nancy during a periodical health assessment. Inclusion criteria at the first visit were parents and grandparents of French origin; residence in the Lorraine region (north-east of France); nuclear families comprising two parents and at least two biological children over 6 years old; fidelity of the majority of the families coming for the second or third time. Exclusion criteria at that visit were chronic or acute disorders. The families were supposed healthy and free from any declared acute and/or chronic disease in order to be able to assess the effects of genetics on the variability of the intermediate phenotypes in physiological conditions without the influence of any medical treatment or disease. These data were used for the statistical analysis when comparing BMI of duplication cases ascertained in France.

**Spanish control cohort, University Hospital Dr. Josep Trueta** The 335 Spanish control subjects were recruited between 2000 and 2006 from the general population at the University Hospital Dr. Josep Trueta of Girona as previously described in [48–51](#).

## Obesity cohorts

**Adult-obesity and child-obesity cohorts** These cohorts were described in a previous publication [13](#). The adult-obesity case-control groups and the child-obesity case control groups were as published previously [46](#), and were genotyped with the Illumina Human CNV370-duo array. In all, 643 children with familial obesity ( $\text{BMI} \geq 97$ th centile corrected for gender and age, at least one obese first-degree relative, age less than 18 years), 581 non-obese children ( $\text{BMI} \leq 90$ th centile), 705 morbidly obese adults with familial obesity ( $\text{BMI} \geq 40 \text{kgm}^{-2}$ , at least one obese first-degree relative with  $\text{BMI} \geq 35 \text{kgm}^{-2}$ , age  $\geq 18$  years) and 197 lean adults ( $\text{BMI} \leq 25 \text{kgm}^{-2}$ ) passed quality control; All participants or their legal guardians gave written informed consent, and all local ethics committees approved the study protocol.

**Bariatric surgery cohort** This cohort was described in a previous publication [13](#). Patients undergoing elective bariatric weight-loss surgery were recruited for the ABOS study at Lille Regional University Hospital. Genotyping was performed with the Illumina Human 1M-duo array, and data from 141 adults passed quality control. All participants gave written informed consent, and the study protocol was approved by the local ethics committee.

**Swedish discordant sibling cohort** The SOS Sib Pair Study cohort was as published previously [52](#). It includes 154 nuclear families, each with BMI discordant sibling pairs ( $\text{BMI difference} > 10 \text{kgm}^{-2}$ ), giving a total of 732 subjects. Genotyping data with the Illumina 610K-Quad array was available for 353 siblings from 149 families. Expression data from subcutaneous adipose tissue (sampled after overnight fasting) were available for 360 siblings from 151 families. Subjects received written and oral information before giving written informed consent. The Regional Ethics Committee in Gothenburg approved the studies.

**Obesity cohort, University Hospital of Dr. Josep Trueta, Girona, Spain** The clinical sample consisted of 285 male and 223 female Spanish subjects of Caucasian origin with morbid obesity or type 2 diabetes mellitus recruited between 2000 and 2006. The remaining subjects were from the general population. All subjects reported stable body weight for at least three months before the study. They had no systemic disease other than obesity and/or IGT. The mean BMI ( $\text{kg/m}^2$ ) was 32.0 (15.2–82.4). The average age at assessment was 46.1 years (range 18.0–79.1). The majority of the patients have been described in previous reports [48–51](#).

**Obesity cohort, University Hospital Virgen de la Victoria, Malaga, Spain** The clinical sample consisted of 85 Spanish Caucasian patients with obesity (35% were men and 65 % women). The mean BMI ( $\text{kg/m}^2$ ) was 33.9 (40–73). The average age at assessment was 42.63 years (19–69). The majority of the patients have been described in previous reports [53](#).

**Obesity cohort, University Hospital Juan XXIII, Tarragona, Spain**

The clinical sample consisted of 57 Spanish Caucasian patients with obesity (59% were men and 41 % women). The mean BMI (kg/m<sup>2</sup>) was 32,23 (27,01–48). The average age at assessment was 59,74 years (36–79). The cases have not previously been described.

### Eating disorder cohort

**Spanish Eating Disorder Cohort, University Hospital of Bellvitge-IDIBELL** The clinical sample consisted of 441 Spanish Caucasian patients with eating disorders (ED) consecutively admitted to the Eating Disorders Unit of the University Hospital of Bellvitge between 2000 and 2008. The majority of patients were female (94.6%), fulfilled DSM-IV criteria for ED, and were diagnosed using the structured clinical interview for mental disorders, research version 2.0 (SCID-I) [54](#). The sample consisted of n=109 anorexia nervosa (AN; 25%), n=193 bulimia nervosa (BN; 44%), n=111 ED not otherwise specified (EDNOS; 25%) and n=28 binge eating disorder patients (BED; 6%). The mean lifetime minimum BMI (kg/m<sup>2</sup>) was 15.46 (SD 1.39) for AN patients, 19.89 (SD 2.95) for BN patients, 18.53 (SD 2.75) for EDNOS patients and 24.31 (SD 4.57) for BED patients. The average age at assessment was 26.57 years (SD 7.67). The average age at onset of the disorder was 18.9 years (SD 4.53) for AN patients, 19.74 (SD 7.16) for BN patients, 18.94 years (SD 5.88) for EDNOS patients and 24.65 years (SD 9.59) for BED patients. The majority of the patients have been described in previous reports [55](#), [56](#), [57](#).

### CNV detection

Cases ascertained for intellectual disabilities and developmental delay were identified through standard medical diagnostic procedures. CNV analyses of GWAS data were variously carried out using *cnvHap* [58](#); a moving window average intensity procedure; a Gaussian Mixture Model [59](#); Circular Binary Segmentation [60](#), [61](#); QuantiSNP [62](#); PennCNV [63](#); BeadStudio GT module (Illumina inc); and Birdseed [64](#) (see below). At least two independent algorithms were used for each cohort.

**Patients referred for intellectual disabilities and developmental delay** All diagnostic procedures (aCGH, QPCR and/or Quantitative Multiplex PCR of Short Fluorescent fragments) were carried out according to the relevant guidelines of good clinical laboratory practice for the respective countries. All rearrangements in probands were confirmed by a second independent method and karyotyping was performed in all cases to exclude a complex rearrangement.

**NFBC cohort** CNV calling was previously described in [13](#). In brief, data were normalized using Illumina BeadStudio, then GC effects on ratios were removed by regressing on GC and GC<sup>2</sup>, while wave effects were removed by fitting a loess function [65](#). CNV analysis was done using *cnvHap* [58](#). All called 16p11.2 duplications were validated by direct analysis of log<sub>2</sub> ratios. Data for each probe were normalized by first subtracting the median value across all samples (so that the distribution of ratios for each probes was centered on zero), and then dividing by the variance across all samples (to correct for variation in the sensitivity of different probes to copy number variation). All CNV calls were confirmed by MLPA.

**DeCODE** Illumina (San Diego, CA, USA) Human317, Human370, HumanHap550, Human610 and 1M BeadChips were used for CNV analysis. BeadStudio (version 2.0) was used to call genotypes, normalize the signal intensity data, and establish the log R ratio and B allele frequency at every SNP according to the standard Illumina protocols. All samples passed a standard SNP-based quality control procedure; all samples with a SNP call rate lower than 0.97. PennCNV [63](#), a free, open-source tool, was used for copy number variation detection. The input data for PennCNV are log R ratio (LRR): a normalized measure of the total signal intensity for the two alleles of the SNP and B allele frequency (BAF): a normalized measure of the allelic intensity ratio of the two alleles. These values are derived with the help of control genotype clusters (HapMap samples), using the Illumina BeadStudio software. PennCNV employs a hidden Markov model (HMM) to analyze the LRR and BAF values across the genome. CNV calls are made, based on the probability of a given copy state at the current marker, as well as on the probability of observing a copy state change from the previous marker to the current one. PennCNV uses a built-in correction model for GC content [66](#).

**CoLaus** Data normalization and CNV calling was previously described in [13](#). Data normalization included allelic cross-talk calibration [67](#), [68](#), intensity summarization using robust median average and correction for any PCR amplification bias. Wave effects were corrected by fitting a Loess function [65](#). CNV calling was

done using a Gaussian mixture model (GMM) [59](#), that fits four components (deletion, copy neutral, 1 and 2 additional copy) to CN ratios. The final copy number at each probe location is determined as the expected (dosage) copy number. The method has been validated by comparing test datasets with results from the CNAT [69](#) and CBS [60,61](#) algorithms and by replicating a subset of CoLaus subject on Illumina arrays. Only duplications found by both GMM and CBS were considered.

**EGCUT** Genotypes were called by BeadStudio software GT module v3.1 or GenomeStudio GT v1.6 (Illumina Inc). Log R Ratio and B Allele Frequency (BAF) values produced by the BeadStudio were formatted for further CNV analysis and break-point mapping with Hidden Markov Model based softwares QuantiSNP (ver. 1.1) [62](#) and PennCNV [70](#) or CNVPartition 2.4.4 (Illumina Inc). All analyses were carried out using the recommended settings, except changing EMiters to 25 and L to 1,000,000 in QuantiSNP. For PennCNV, the Estonian population specific SNP allele frequency data was used. All detected duplications were confirmed by quantitative PCR.

**SHIP** Raw intensities were normalized using Affymetrix Power Tools (Affymetrix inc), CNV analysis was done using Birdseye from the Birdsuite software package [64](#) and PennCNV [63](#). PennCNV predictions with confidence score less than 10 were removed. Birdsuite predictions were filtered as in [21](#): CNVs were kept if their LOD score was greater than 10, length greater than 1kb and number of probes greater or equal to 5 and size per number of probes less than 10,000.

**KORA F3/F4** Genotyping for KORA F3 was performed using Affymetrix 500K Array Set consisting of two chips (Sty I and Nsp I). The KORA F4 samples were genotyped with the Affymetrix Human SNP Array 6.0. For both studies genomic DNA from blood samples was used for analysis. Hybridisation of genomic DNA was done in accordance with the manufacturer's standard recommendations. Genotyping was done in the Genome Analysis Centre (GAC) of the Helmholtz Centre Munich. Genotypes were determined using BRLMM clustering algorithm (Affymetrix 500K Array Set) and Birdseed2 clustering algorithm (Affymetrix Array 6.0). For quality control purposes, we applied a positive control and a negative control DNA every 48 (KORA F3) samples or 96 samples (KORA F4). On chip level only subjects with overall genotyping efficiencies of at least 93% were included. In addition the called gender had to agree with the gender in the KORA study database. After exclusions 1,644 individuals remained in KORA F3 and 1,814 in KORA F4 for further analysis.

### **MLPA analysis**

We used Multiplex Ligation-dependent Probe Amplification (MLPA) to determine changes in the copy number of a region of around 2 Mb on chromosome 16p11.2. Briefly, we designed, using hg18, nine probes within the targeted region, one control probe outside the rearranged region and seven control probes targeting unique position in the genome ([Supplementary Table S10](#)). Assays were performed with MRC-Holland reagents according to the manufacturer's protocol [71](#). The analysis of the amplification products was performed by capillary electrophoresis in the DNA Analyzer 3730XL and using the GeneMapper software v3.7 (Applied Biosystems, Foster City, CA). The calculations were performed independently for each experiment: we first normalized the MLPA data to minimize the amount of experimental variations summing all the signal values of each control probe for each sample, and afterwards, dividing each signal value of each sample with the sum. Then, the normalized signal values were compared to signal values from all other samples in the same experiment dividing the normalized signal values by the average calculated from all the samples in the same experiment. The product of this calculation is termed dosage quotient (DQ). A calculated DQ value below 0.65 and above 1.25 was considered as copy-number loss and gain, respectively as described [72-74](#).

### **Short arm of chromosome 16 custom array-CGH**

DNA samples were labelled with Cy3 and cohybridized with Cy5-labelled DNA from the CEPH cell line, GM12042, to custom-made Nimblegen arrays. These arrays contained 71,000 probes spread across the short arm of chromosome 16 from 22.0 to 32.7 Mb (at a median space of 45 bp between 27.5 and 31.0 Mb) and 1,000 control probes situated in invariable region of the X chromosome. DNA labelling, hybridization and washing were performed according to Nimblegen protocols. Scanning was performed using an Agilent

G2565BA Microarray Scanner. Image processing, quality control and data extraction were performed using the Nimblescan software v.2.5.

### **Weight, height, BMI and head circumference (HC) Z-scores as a function of age**

• **Pediatric cases** Weight, height, BMI and HC Z-scores were determined for pediatric cases (0–18 years) using clinical growth charts specific to the country of origin. Children were ascertained from 9 different countries. If charts were only available in percentile, those measures were transformed in Z-scores (cf. Statistics).

For United-States and Canada, data from the Center for Disease Control and National Center for Health Statistics (CDC/NCHS) were used to calculate Z scores. [75](#).

For the French pediatric population we used French national growth charts [76](#), [77](#). For the Swiss pediatric population we used Swiss national growth charts [78](#). For Dutch participants Dutch national growth charts were available. [79](#) For Italian, German, Finnish, Austrian cases (n= 6) height, weight and BMI Z-scores were estimated using WHO growth charts. [80](#)

To check for discrepancies generated by the use of different growth charts, height, weight and BMI Z-scores were recalculated using WHO growth charts, for all cases less than 5 years, regardless of origin (<http://www.who.int/childgrowth/standards/en/80>). Z-scores obtained using the WHO data were not significantly different. These growth standards, developed by the World Health Organization Multicentre Growth Reference Study, describe normal child growth from birth to 5 years under optimal environmental conditions. These standards can be applied to all children everywhere, regardless of ethnicity, socioeconomic status, and type of feeding [81](#), [82](#).

If needed, Percentile values were transformed to Z-scores by the inverse-normal density function. When growth chart were unavailable we utilized reported LMS parameters (median (M), generalized coefficient of variation (S), and skewness (L)) to obtain Z-scores via the formula:

$$Z - \text{score} = \begin{cases} \frac{(X/M)^L - 1}{L*S}, L > 0 \\ \ln(X/M)/S, L = 0 \end{cases},$$

in which X is the genuinely observed value.

• **Adults (>18 years)** When LMS parameters were unavailable we estimated them from the available sex-, age-, and origin-matched Swiss- (CoLaus), Estonian-, or French control populations. For cases identified from population based cohorts, Z-scores were directly inferred from the cohort.

### **Gene expression**

We established lymphoblastoid cell lines from deletion and duplication carriers, as well as controls ([Supplementary Table S12](#)), by transforming peripheral blood mononuclear cells with EBV. Patients and controls were enrolled after obtaining appropriate informed consent by the physicians in charge and approval by the ethics committee of the University of Lausanne. More control cell lines were obtained from Coriell Institute for Medical Research (<http://www.coriell.org/>) ([Supplementary Table S12](#)). SYBR Green real-time quantitative polymerase chain reaction was performed as published [29](#):[83](#). Briefly, 1 µg of total RNA from lymphoblastoid cell lines was converted to cDNA using Superscript VILO (Invitrogen) primed with a mix of oligo(dT) and random hexamers. Oligos were designed using the PrimerExpress program (Applied Biosystem) with default parameters ([Supplementary Table S11](#)). Non intron-spanning assays were tested in standard +/- RT reactions of RNA samples for genomic contamination. The amplification efficiency of each primer pair was tested in a cDNA dilution series as described [84](#). A full list of genes mapping within the rearranged interval and exclusion criteria are presented in [Supplementary Table S1](#). All RT-PCR reactions were performed in a 10 µl final volume and triplicates per sample. The set up in a 384 wells plate format was performed using a Freedom EVO robot (TECAN) and assays run in an ABI 7900 Sequence Detection System (Applied Biosystems) with the following amplification conditions: 50°C for 2 min, 95°C for 10 min,

and 45 cycles of 95°C 15 sec/60°C for 1 min. A final incubation of 95°C for 15 sec followed by 60°C for 15 sec was carried out in order to establish a dissociation curve. Each plate included the appropriate normalization genes to control for any variability between the different plate runs. Raw threshold cycles (Ct) values were obtained using SDS2.4 (Applied Biosystems). In order to calculate the normalized relative expression ratio of individuals carrying the copy number variant and of controls, we used the Biogazelle qBase Plus software [85](#) including geNorm [86](#). This program identified appropriate normalization genes (*EEF1A1*, *RPL13*, *GUSB* and *TBP*) having a gene-stability measure of  $M=0.25$ . We note that, one gene, namely *LAT*, showed a startlingly high expression profile in one of the duplication samples (DASYL, [Supplementary Table S13](#)), reaching a relative expression value of 27.3 (SE=1.37), compared to an average expression for other duplications of 1.89 (SE=0.51). Whilst at this point we cannot exclude that this finding is genuine (although confirmed it in a second experiment), it was excluded from further analyses as an outlier in order to give a more accurate overview of expression profiles for these genes.

*In silico* analysis was performed to check for brain, and specifically hypothalamus, expression of genes within the rearranged 16p11.2 interval ([Supplementary Table S1](#)). This was done using Allen Brain Atlas Resources, Seattle (WA): Allen Institute for Brain Science. ©2009. Available from: <http://www.brain-map.org>.

### Cases with significant neurological signs

Significant neurological signs were defined by (i) the presence of neurological signs such as severe hypotonia, hypertonia, ataxia, severe spasticity, hyperreflexia, hyporeflexia and/or extra-pyramidal signs, (ii) the severity of the developmental delay (e.g. no speech at age 5 and/or severe gross motor delay in walking acquisition >24 months); and (iii) the presence of epilepsy. Mental retardation, autism, psychiatric symptoms, unspecified hypotonia and mild spasticity were not considered.

### Statistics

**T-test** One-sided t-test was performed to test whether duplication carriers have lower than zero BMI, height, weight Z-score values. We found this analysis more suitable than linear regression analysis correcting for confounding factors such as sex and age, because these anthropometric traits have a highly non-linear dependence on these factors as can be observed in control population.

**Kruskal-Wallis test** We used Kruskal-Wallis to test differences in the gene expression pattern between deletion and duplication carriers and control individuals. Since expression values are not necessarily normally distributed, this test is more adequate than a classical one-way ANOVA. To test pairwise differences, we computed the difference in mean group rank with its 95% confidence interval (as provided by the `multcompare` function in Matlab). Correction for multiple testing issues was done using a Bonferroni adjustment.

**Multiple testing** We determined false discovery rate (FDR) based association  $p$  value thresholds for each phenotype to correct for multiple testing. For each phenotype we replaced the observed Z-scores with numbers randomly drawn from a standard normal distribution and performed the same t-tests for the same strata. The procedure was repeated 1,000 times. For various  $p$  value thresholds we asked how many test would be declared significant for the null set on average (over the 1,000 random draws). FDR was estimated as the fraction of this number and the actual number we obtained for the observed Z-scores. With this approach we controlled the dependence between the nested tests we carried out.

**Relative risk** Among adults, we defined (the risk of) being underweight as having BMI below 18.5. The estimated Relative Risk (RR) is the ratio of the fraction of underweight individuals among duplication carriers versus our control group. Underweight adults were defined by the WHO criteria ( $BMI \leq 18.5$ ). The standard error of  $\log(RR)$  and its significance were calculated as described in [87](#). In our control group (population based cohorts), the frequency of underweight is 1.9% (38 males and 148 females out of 9470).

### Supplementary Material

---

---

## Acknowledgments

---

We thank the Vital-IT high-performance computing centre of the Swiss Institute of Bioinformatics. SJ is recipient of a « bourse de relèvement académique de la Faculté de Biologie et Médecine de l'Université de Lausanne ». This work was supported by the Leenaards Foundation Prize (SJ, DM and AR), the Jérôme Lejeune Foundation (AR), the Telethon Action Suisse Foundation (AR), the Swiss National Science Foundation (AR, JSB, SB and SEA), a SNSF Sinergia grant (SJ, DM, SB, JSB and AR), the European Commission anEUploidy Integrated Project grant 037627 (AR, SB, XE, HGB and SEA), the Ludwig Institute for Cancer Research (AV), the Swiss Institute of Bioinformatics (SB, ZK), an Imperial College Dept of Medicine PhD studentship (JSe-SM), the Comprehensive Biomedical Research Centre, Imperial College Healthcare NHS Trust, and the National Institute for Health Research (PE), the Wellcome Trust and the Medical Research Council (AIFB and PF), the Instituto de Salud Carlos III (ISCIII)-FIS, the German Mental Retardation Network funded through a grant of the German Federal Ministry of Education and Research (NGFNplus 01GS08160) to A Reis and European Union-FEDER (PI081714, PS09/01778), SAF2008-02278 (XE, MG, FFA), the Belgian National Fund for Scientific Research - Flanders (NVA, RFK), the Dutch Organisation for Health Research and Development (ZON-MW grant 917-86-319) and Hersenstichting Nederland (BBAdV), grant 81000346 from the Chinese National Natural Science Foundation (YGY), the Simons Foundation Autism Research Initiative, Autism Speaks and NIH grant GM061354 (JFG), and the OENB grant 13059 (AK-B). YS holds a Young Investigator Award from the Children's Tumor Foundation and Catalyst Award from Harvard Medical School, and BLW, a Fudan Scholar Research Award from Fudan University, a grant from Chinese National "973" project on Population and Health (2010CB529601) and a grant from Science and Technology Council of Shanghai (09JC1402400). ERS and SL, recipients of the Michael Smith Foundation for Health Research Scholar award, acknowledge the CIHR MOP 74502 operational grant. EGCUT received support from the EU Centre of Excellence in Genomics and FP7 grants #201413 and #245536, from Estonian Government SF0180142s08, SF0180026s09 and SF0180027s10 (AM, KM, AK). The Helmholtz Zentrum Munich and the State of Bavaria financed KORA, also supported by the German National Genome Research Network (NGFN-2 and NGFNPlus: 01GS0823), the German Federal Ministry of Education and Research (BMBF), and the Munich Center of Health Sciences (MC Health, LMUinnovativ). CIBEROBN and CIBERESP are initiatives of ISCIII (Spain). SWS holds the GlaxoSmithKline-Canadian Institutes of Health (CIHR) Chair in Genetics, Genomics at the University of Toronto and the Hospital for Sick Children and is supported by Genome Canada and the McLaughlin Centre. deCODE was funded in part by NIH grant MH071425 (KS), EU grant HEALTH-2007-2.2.1-10-223423 (Project PsychCNV) and EU grant IMI-JU-NewMeds. We thank for their help M. Hass, Z. Jaros, M. Jussila, M. Koiranen, P. Rantakallio, MC. Rudolf, V. Soo, O. Tornwall, S. Vaara, T. Ylitalo and the French DHOS national CGH network, as well as all participating patients and clinicians. The funders had no role in study design, data collection and analysis, decision to publish, or preparation of the manuscript.

---

## Footnotes

---

Contributed by

### Author contributions

SJ, AR, PF and JSB wrote the manuscript with contributions from FZ, LH, RGW, NDB, ZK, AIFB and AV. LH, AV and AR produced and analyzed the expression data. ZK, AV, RGW and NDB conducted the statistical analyses guided by SJ, AR, PF and JSB. SJ, AR, FZ, LH, DM, YS, GT, MB, SB, DC, NdL, BBAdV, BAF, FFA, MG, AG, JH, AK, CIC, KM, KO, OSP, DS, MMVH, SVG, ATVsS, FW, BLW, YY, JA, XE, JFG, AM, SWS, KS, UT, AIFB, JSB, PF and all other authors phenotyped and/or genotyped patients and/or individuals of the general population. SJ, AR and JSB designed the study. All authors commented on and approved the manuscript.

---

## References

---

1. Berrington de Gonzalez A, et al. Body-mass index and mortality among 1.46 million white adults. *N Engl J Med*. 2010;363:2211–9. [PMCID: PMC3066051] [PubMed: 21121834]
2. Flegal KM, Graubard BI, Williamson DF, Gail MH. Cause-specific excess deaths associated with underweight, overweight, and obesity. *JAMA*. 2007;298:2028–37. [PubMed: 17986696]

3. Physical status: the use and interpretation of anthropometry. Report of a WHO Expert Committee. World Health Organization technical report series. 1995;854:1–452. [PubMed: 8594834]
4. de Onis M, Blossner M, Borghi E, Frongillo EA, Morris R. Estimates of global prevalence of childhood underweight in 1990 and 2015. *JAMA*. 2004;291:2600–6. [PubMed: 15173151]
5. Mei Z, et al. Validity of body mass index compared with other body-composition screening indexes for the assessment of body fatness in children and adolescents. *The American journal of clinical nutrition*. 2002;75:978–85. [PubMed: 12036802]
6. Olsen EM, et al. Failure to thrive: the prevalence and concurrence of anthropometric criteria in a general infant population. *Archives of disease in childhood*. 2007;92:109–14. [PMCID: PMC2083342] [PubMed: 16531456]
7. Corbett SS, Drewett RF. To what extent is failure to thrive in infancy associated with poorer cognitive development? A review and meta-analysis. *J Child Psychol Psychiatry*. 2004;45:641–54. [PubMed: 15055382]
8. Rudolf MC, Logan S. What is the long term outcome for children who fail to thrive? A systematic review. *Arch Dis Child*. 2005;90:925–31. [PMCID: PMC1720590] [PubMed: 15890695]
9. Bryant-Waugh R, Markham L, Kreipe RE, Walsh BT. Feeding and eating disorders in childhood. *The International journal of eating disorders*. 2010;43:98–111. [PubMed: 20063374]
10. APA. *Diagnostic and Statistical Manual of Mental Disorders, DSM-IV-TR*. American Psychiatric Association; Washington, DC: 2000.
11. Scherag S, Hebebrand J, Hinney A. Eating disorders: the current status of molecular genetic research. *Eur Child Adolesc Psychiatry*. 19:211–26. [PMCID: PMC2839487] [PubMed: 20033240]
12. Wang K, et al. A genome-wide association study on common SNPs and rare CNVs in anorexia nervosa. *Mol Psychiatry*. 2010 [PMCID: PMC3859494]
13. Walters RG, et al. A new highly penetrant form of obesity due to deletions on chromosome 16p11.2. *Nature*. 2010;463:671–5. [PMCID: PMC2880448] [PubMed: 20130649]
14. Bijlsma EK, et al. Extending the phenotype of recurrent rearrangements of 16p11.2: deletions in mentally retarded patients without autism and in normal individuals. *Eur J Med Genet*. 2009;52:77–87. [PubMed: 19306953]
15. Fernandez BA, et al. Phenotypic Spectrum Associated with De Novo and Inherited Deletions and Duplications at 16p11.2 in Individuals Ascertained for Diagnosis of Autism Spectrum Disorder. *J Med Genet*. 2009
16. McCarthy SE, et al. Microduplications of 16p11.2 are associated with schizophrenia. *Nat Genet*. 2009;41:1223–7. [PMCID: PMC2951180] [PubMed: 19855392]
17. Weiss LA, et al. Association between microdeletion and microduplication at 16p11.2 and autism. *N Engl J Med*. 2008;358:667–75. [PubMed: 18184952]
18. Glessner JT, et al. Autism genome-wide copy number variation reveals ubiquitin and neuronal genes. *Nature*. 2009;459:569–73. [PMCID: PMC2925224] [PubMed: 19404257]
19. Marshall CR, et al. Structural variation of chromosomes in autism spectrum disorder. *Am J Hum Genet*. 2008;82:477–88. [PMCID: PMC2426913] [PubMed: 18252227]
20. Crespi B, Stead P, Elliot M. Evolution in health and medicine Sackler colloquium: Comparative genomics of autism and schizophrenia. *Proc Natl Acad Sci U S A*. 2010;107 (Suppl 1):1736–41. [PMCID: PMC2868282] [PubMed: 19955444]
21. Bochukova EG, et al. Large, rare chromosomal deletions associated with severe early-onset obesity. *Nature*. 2010;463:666–70. [PMCID: PMC3108883] [PubMed: 19966786]

22. Firmann M, et al. The CoLaus study: a population-based study to investigate the epidemiology and genetic determinants of cardiovascular risk factors and metabolic syndrome. *BMC Cardiovasc Disord.* 2008;8:6. [PMCID: PMC2311269] [PubMed: 18366642]
23. Sabatti C, et al. Genome-wide association analysis of metabolic traits in a birth cohort from a founder population. *Nat Genet.* 2009;41:35–46. [PMCID: PMC2687077] [PubMed: 19060910]
24. Nelis M, et al. Genetic structure of Europeans: a view from the North-East. *PLoS One.* 2009;4:e5472. [PMCID: PMC2675054] [PubMed: 19424496]
25. Girirajan S, Eichler EE. Phenotypic variability and genetic susceptibility to genomic disorders. *Hum Mol Genet.* 2010;19:R176–87. [PMCID: PMC2953748] [PubMed: 20807775]
26. WHO. Report of a WHO Expert Committee. 1995. Physical status: the use and interpretation of anthropometry.
27. Pramyothin P, Khaodhiar L. Metabolic syndrome with the atypical antipsychotics. *Curr Opin Endocrinol Diabetes Obes.* 2010;17:460–6. [PubMed: 20717020]
28. Shinawi M, et al. Recurrent reciprocal 16p11.2 rearrangements associated with global developmental delay, behavioral problems, dysmorphism, epilepsy, and abnormal head size. *J Med Genet.* 2009 [PMCID: PMC3158566]
29. Merla G, et al. Submicroscopic deletion in patients with Williams-Beuren syndrome influences expression levels of the nonhemizygous flanking genes. *Am J Hum Genet.* 2006;79:332–41. [PMCID: PMC1559497] [PubMed: 16826523]
30. Stranger BE, et al. Relative impact of nucleotide and copy number variation on gene expression phenotypes. *Science.* 2007;315:848–53. [PMCID: PMC2665772] [PubMed: 17289997]
31. Henrichsen CN, et al. Segmental copy number variation shapes tissue transcriptomes. *Nat Genet.* 2009;41:424–9. [PubMed: 19270705]
32. Ricard G, et al. Phenotypic consequences of copy number variation: insights from Smith-Magenis and Potocki-Lupski syndrome mouse models. *PLoS Biol.* 2010;8:e1000543. [PMCID: PMC2990707] [PubMed: 21124890]
33. Willer CJ, et al. Six new loci associated with body mass index highlight a neuronal influence on body weight regulation. *Nat Genet.* 2009;41:25–34. [PMCID: PMC2695662] [PubMed: 19079261]
34. Crespi B, Badcock C. Psychosis and autism as diametrical disorders of the social brain. *Behav Brain Sci.* 2008;31:241–61. discussion 261–320. [PubMed: 18578904]
35. Baxter PS, Rigby AS, Rotsaert MH, Wright I. Acquired microcephaly: causes, patterns, motor and IQ effects, and associated growth changes. *Pediatrics.* 2009;124:590–5. [PubMed: 19651581]
36. Li Y, Dai Q, Jackson JC, Zhang J. Overweight is associated with decreased cognitive functioning among school-age children and adolescents. *Obesity (Silver Spring)* 2008;16:1809–15. [PubMed: 18551126]
37. Guilmatre A, et al. Recurrent rearrangements in synaptic and neurodevelopmental genes and shared biologic pathways in schizophrenia, autism, and mental retardation. *Arch Gen Psychiatry.* 2009;66:947–56. [PMCID: PMC2958844] [PubMed: 19736351]
38. Magnusson P, Smari J, Gretarsdottir H, Prandardottir H. Attention- Deficit/Hyperactivity symptoms in Icelandic schoolchildren: assessment with the Attention Deficit/Hyperactivity Rating Scale-IV. *Scand J Psychol.* 1999;40:301–6. [PubMed: 10658514]
39. Magnusson P, et al. Validity of self-report and informant rating scales of adult ADHD symptoms in comparison with a semistructured diagnostic interview. *J Atten Disord.* 2006;9:494–503. [PubMed: 16481666]
40. Spitzer RL, Endicott J, Robins E. Research diagnostic criteria: rationale and reliability. *Arch Gen Psychiatry.* 1978;35:773–82. [PubMed: 655775]



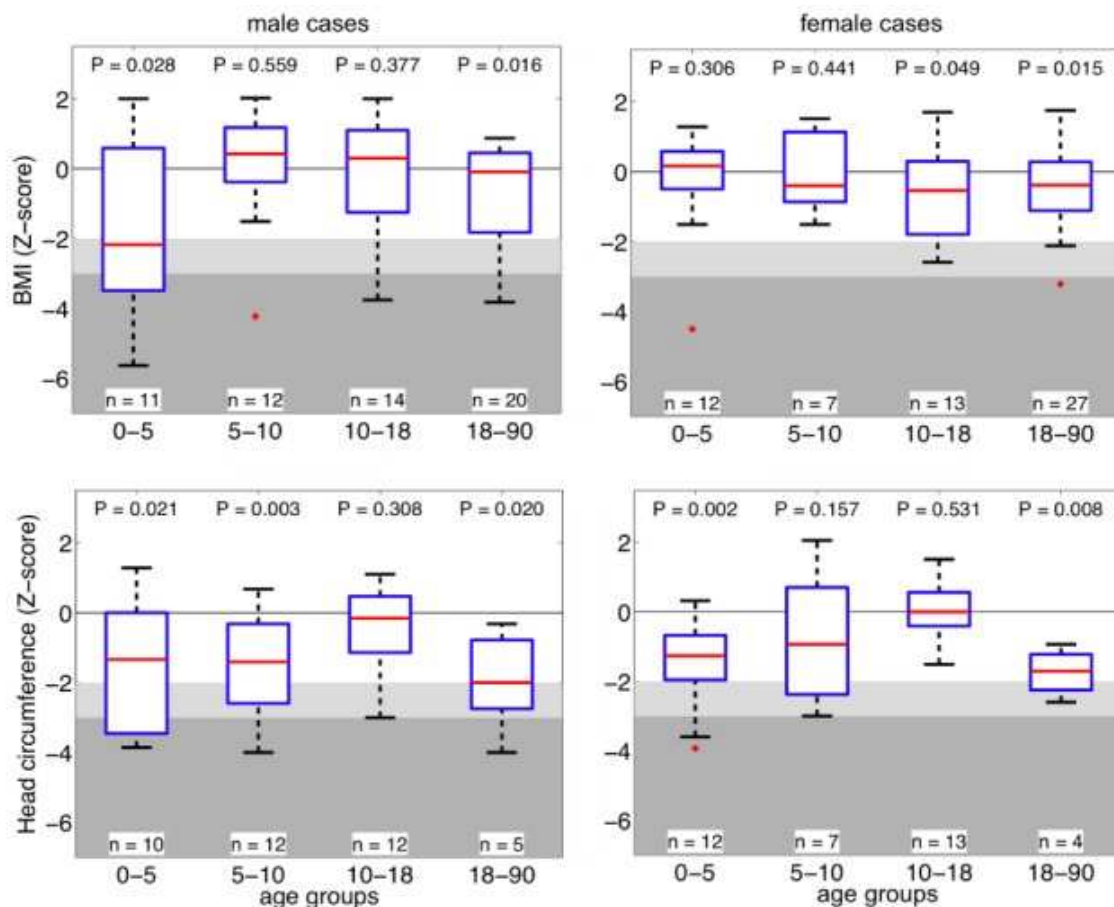
41. Endicott J, Spitzer RL. A diagnostic interview: the schedule for affective disorders and schizophrenia. *Arch Gen Psychiatry*. 1978;35:837–44. [PubMed: 678037]
42. Williams NM, et al. Rare chromosomal deletions and duplications in attention-deficit hyperactivity disorder: a genome-wide analysis. *Lancet*. 2010;376:1401–8. [PMCID: PMC2965350] [PubMed: 20888040]
43. John U, et al. Study of Health In Pomerania (SHIP): a health examination survey in an east German region: objectives and design. *Soz Praventivmed*. 2001;46:186–94. [PubMed: 11565448]
44. Volzke H, et al. Cohort Profile: The Study of Health in Pomerania. *Int J Epidemiol*
45. Wichmann HE, Gieger C, Illig T. KORA-gen--resource for population genetics, controls and a broad spectrum of disease phenotypes. *Gesundheitswesen*. 2005;67 (Suppl 1):S26–30. [PubMed: 16032514]
46. Meyre D, et al. Genome-wide association study for early-onset and morbid adult obesity identifies three new risk loci in European populations. *Nat Genet*. 2009;41:157–9. [PubMed: 19151714]
47. Visvikis-Siest S, Siest G. The STANISLAS Cohort: a 10-year follow-up of supposed healthy families. Gene-environment interactions, reference values and evaluation of biomarkers in prevention of cardiovascular diseases. *Clin Chem Lab Med*. 2008;46:733–47. [PubMed: 18601594]
48. Gubern C, et al. Natural antibiotics and insulin sensitivity: the role of bactericidal/permeability-increasing protein. *Diabetes*. 2006;55:216–24. [PubMed: 16380496]
49. Lopez-Bermejo A, et al. Alpha defensins 1, 2, and 3: potential roles in dyslipidemia and vascular dysfunction in humans. *Arterioscler Thromb Vasc Biol*. 2007;27:1166–71. [PubMed: 17303777]
50. Moreno-Navarrete JM, et al. Complement factor H is expressed in adipose tissue in association with insulin resistance. *Diabetes*. 2010;59:200–9. [PMCID: PMC2797922] [PubMed: 19833879]
51. Moreno-Navarrete JM, et al. Association of circulating lactoferrin concentration and 2 nonsynonymous LTF gene polymorphisms with dyslipidemia in men depends on glucose-tolerance status. *Clin Chem*. 2008;54:301–9. [PubMed: 18156281]
52. Jernas M, et al. Regulation of carboxylesterase 1 (CES1) in human adipose tissue. *Biochem Biophys Res Commun*. 2009;383:63–7. [PMCID: PMC2723917] [PubMed: 19332024]
53. Tinahones FJ, et al. Obesity and insulin resistance-related changes in the expression of lipogenic and lipolytic genes in morbidly obese subjects. *Obes Surg*. 2010;20:1559–67. [PubMed: 20512427]
54. First MB, Spitzer RL, Williams JBW. Structured Clinical Interview for DSM-IV (SCID-I): Users Guide and Interview, Research Version. Biometrics Research Department, New York Psychiatric Institute; New York: 1995.
55. Gabrovsek M, et al. Combined family trio and case-control analysis of the COMT Val158Met polymorphism in European patients with anorexia nervosa. *Am J Med Genet B Neuropsychiatr Genet*. 2004;124B:68–72. [PubMed: 14681918]
56. Mercader JM, et al. Altered brain-derived neurotrophic factor blood levels and gene variability are associated with anorexia and bulimia. *Genes Brain Behav*. 2007;6:706–16. [PubMed: 17376155]
57. Ribases M, et al. Association of BDNF with restricting anorexia nervosa and minimum body mass index: a family-based association study of eight European populations. *Eur J Hum Genet*. 2005;13:428–34. [PubMed: 15657604]
58. Coin LJ, et al. cnvHap: an integrative population and haplotype-based multiplatform model of SNPs and CNVs. *Nat Methods*. 7:541–6. [PubMed: 20512141]
59. Valsesia A, et al. Identification and validation of Copy Number Variants using SNP genotyping arrays from a large clinical cohort. (submitted) [PMCID: PMC3464625]
60. Olshen AB, Venkatraman ES, Lucito R, Wigler M. Circular binary segmentation for the analysis of array-based DNA copy number data. *Biostatistics*. 2004;5:557–72. [PubMed: 15475419]

61. Venkatraman ES, Olshen AB. A faster circular binary segmentation algorithm for the analysis of array CGH data. *Bioinformatics*. 2007;23:657–63. [PubMed: 17234643]
62. Colella S, et al. QuantiSNP: an Objective Bayes Hidden-Markov Model to detect and accurately map copy number variation using SNP genotyping data. *Nucleic Acids Res*. 2007;35:2013–25. [PMCID: PMC1874617] [PubMed: 17341461]
63. Wang K, et al. PennCNV: an integrated hidden Markov model designed for high-resolution copy number variation detection in whole-genome SNP genotyping data. *Genome Res*. 2007;17:1665–74. [PMCID: PMC2045149] [PubMed: 17921354]
64. Korn JM, et al. Integrated genotype calling and association analysis of SNPs, common copy number polymorphisms and rare CNVs. *Nat Genet*. 2008;40:1253–60. [PMCID: PMC2756534] [PubMed: 18776909]
65. Marioni JC, et al. Breaking the waves: improved detection of copy number variation from microarray-based comparative genomic hybridization. *Genome Biol*. 2007;8:R228. [PMCID: PMC2246302] [PubMed: 17961237]
66. Diskin SJ, et al. Adjustment of genomic waves in signal intensities from whole-genome SNP genotyping platforms. *Nucleic Acids Res*. 2008;36:e126. [PMCID: PMC2577347] [PubMed: 18784189]
67. Bengtsson H, Irizarry R, Carvalho B, Speed TP. Estimation and assessment of raw copy numbers at the single locus level. *Bioinformatics*. 2008;24:759–67. [PubMed: 18204055]
68. Bengtsson H, Ray A, Spellman P, Speed TP. A single-sample method for normalizing and combining full-resolution copy numbers from multiple platforms, labs and analysis methods. *Bioinformatics*. 2009;25:861–7. [PMCID: PMC2660872] [PubMed: 19193730]
69. Huang J, et al. Whole genome DNA copy number changes identified by high density oligonucleotide arrays. *Hum Genomics*. 2004;1:287–99. [PMCID: PMC3525261] [PubMed: 15588488]
70. Wang B, et al. Abraxas and RAP80 form a BRCA1 protein complex required for the DNA damage response. *Science*. 2007;316:1194–8. [PMCID: PMC3573690] [PubMed: 17525340]
71. Schouten JP, et al. Relative quantification of 40 nucleic acid sequences by multiplex ligation-dependent probe amplification. *Nucleic Acids Res*. 2002;30:e57. [PMCID: PMC117299] [PubMed: 12060695]
72. Bunyan DJ, et al. Dosage analysis of cancer predisposition genes by multiplex ligation-dependent probe amplification. *Br J Cancer*. 2004;91:1155–9. [PMCID: PMC2747696] [PubMed: 15475941]
73. Fernandez L, et al. Comparative study of three diagnostic approaches (FISH, STRs and MLPA) in 30 patients with 22q11.2 deletion syndrome. *Clin Genet*. 2005;68:373–8. [PubMed: 16143025]
74. Slater HR, et al. Rapid, high throughput prenatal detection of aneuploidy using a novel quantitative method (MLPA) *J Med Genet*. 2003;40:907–12. [PMCID: PMC1735348] [PubMed: 14684689]
75. Kuczmarski RJ, et al. CDC growth charts: United States. *Adv Data*. 2000:1–27. [PubMed: 11183293]
76. Sempé M, Pedron G, Roy-Pernot MP. *Auxologie, méthode et séquences*. Vol. 205. Paris: Théraplix; 1979.
77. Rolland-Cachera MF, et al. Body Mass Index variations: centiles from birth to 87 years. *Eur J Clin Nutr*. 1991;45:13–21. [PubMed: 1855495]
78. Prader A, Largo RH, Molinari L, Issler C. Physical growth of Swiss children from birth to 20 years of age. First Zurich longitudinal study of growth and development. *Helv Paediatr Acta Suppl*. 1989;52:1–125. [PubMed: 2737921]
79. Growth diagrams. Fourth dutch nation-wide survey. Bohn Stafleu Van Loghum; 1997.
80. de Onis M, et al. Development of a WHO growth reference for school-aged children and adolescents. *Bull World Health Organ*. 2007;85:660–7. [PMCID: PMC2636412] [PubMed: 18026621]

81. de Onis M, Garza C, Onyango AW, Borghi E. Comparison of the WHO child growth standards and the CDC 2000 growth charts. *J Nutr.* 2007;137:144–8. [PubMed: 17182816]
82. Mei Z, Ogden CL, Flegal KM, Grummer-Strawn LM. Comparison of the prevalence of shortness, underweight, and overweight among US children aged 0 to 59 months by using the CDC 2000 and the WHO 2006 growth charts. *J Pediatr.* 2008;153:622–8. [PubMed: 18619613]
83. Molina J, et al. Abnormal social behaviors and altered gene expression rates in a mouse model for Potocki-Lupski syndrome. *Hum Mol Genet.* 2008;17:2486–95. [PubMed: 18469339]
84. Livak KJ, Schmittgen TD. Analysis of relative gene expression data using real-time quantitative PCR and the  $2^{-\Delta\Delta C(T)}$  Method. *Methods.* 2001;25:402–8. [PubMed: 11846609]
85. Hellemans J, Mortier G, De Paepe A, Speleman F, Vandesompele J. qBase relative quantification framework and software for management and automated analysis of real-time quantitative PCR data. *Genome Biol.* 2007;8:R19. [PMCID: PMC1852402] [PubMed: 17291332]
86. Vandesompele J, et al. Accurate normalization of real-time quantitative RT-PCR data by geometric averaging of multiple internal control genes. *Genome Biol.* 2002;3:RESEARCH0034. [PMCID: PMC126239] [PubMed: 12184808]
87. Morris JA, Gardner MJ. Calculating confidence intervals for relative risks (odds ratios) and standardised ratios and rates. *Br Med J (Clin Res Ed)* 1988;296:1313–6. [PMCID: PMC2545775]

## Figures and Tables

**Figure 1**

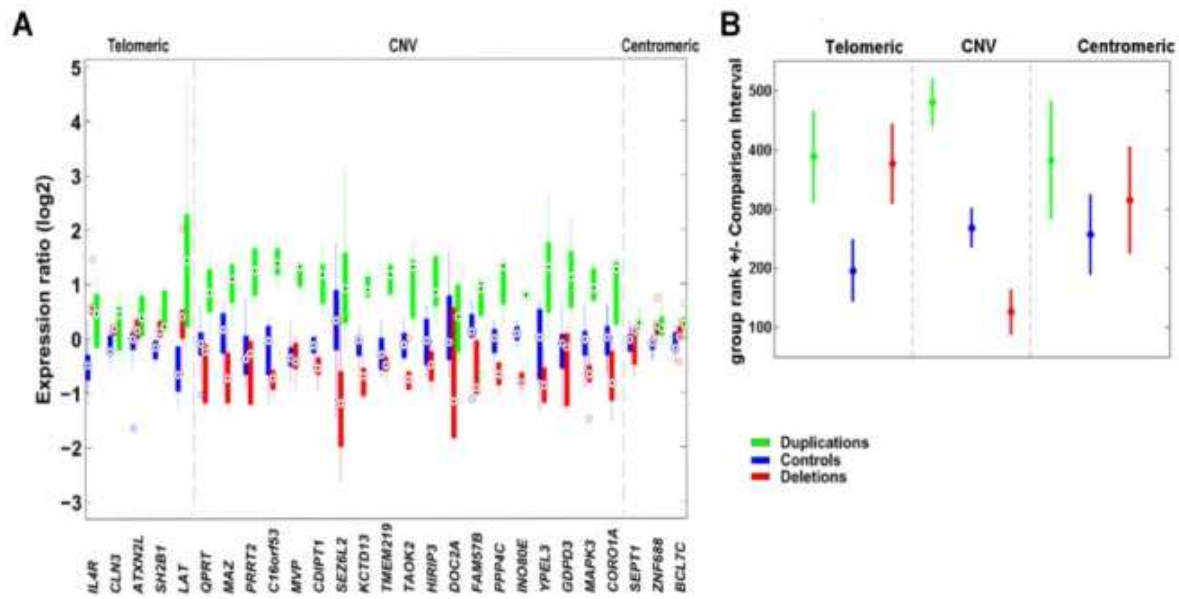


### Effect of the 16p11.2 duplication on BMI and head circumference

Z-score values of BMI (top row) and head circumference (bottom row) of 16p11.2 duplication carriers stratified by gender and age group. The most severe effect is observed in children 0–5 years of age. Abscise: age groups in years. Boxplots represent the 5th, 25th, median, 75th and 95th percentile for each age group. Light grey and dark grey background represent

–2 and –3 SD respectively, which correspond to the WHO definition of moderate and severe underweight<sup>4</sup>. BMI is decreased in adolescent and adult females.

**Figure 2**



**Transcript levels for genes within and near to the 16p11.2 rearrangements**

(A) Relative expression levels in boxplot format of 27 genes mapping to 16p11.2 in deletion and duplication carriers (red and green, respectively) and control cell lines (blue). Grey lines denote the extent of the 16p11.2 CNV (29.5–30.1 Mb). Complete lists of genes mapping within the rearranged interval and of the quantitative PCR assays can be consulted in [Supplementary Table S1 and S11](#), respectively. Possible relevance of each of these genes to obesity/leanness and/or developmental delay/cognitive deficits can be consulted in [13](#).

(B) Rank comparison (Kruskal-Wallis test) between expression of 27 genes mapping to 16p11.2 in deletion and duplication carriers (red and green, respectively) and control cell lines (blue).

Distinction is made between genes mapping telomeric (or centromeric) to the rearranged interval and those within the rearranged interval. Dots correspond to the mean group rank and bars indicate the comparison interval, groups with non-overlapping intervals are significantly different (at  $\alpha=5\%$ ).

**Table 1**

16p11.2 rearrangements in cases and controls.

<i>Ascertainment</i>	<b>Cohorts</b>	<b>Dup</b>		<b>Del</b>		<b>Total</b>
		<b>n</b>	<b><i>p</i><sup>1</sup></b>	<b>n</b>	<b><i>p</i><sup>1</sup></b>	
<i>Neuro-developmental disorders</i>	Unspecified DD/ID <sup>*</sup> from 28 cytogenetic centers	72		113		30323
	ADHD <sup>4</sup> , deCODE <sup>4</sup>	0		1		591
	Childhood Autism <sup>4</sup> , deCODE	0		2		159
	Childhood Autism spectrum disorder <sup>4</sup> , deCODE	1		3		351
	<b>TOTAL</b>	<b>73</b>	<b>4.23e-13</b>	<b>119</b>	<b>5.43e-32</b>	<b>31424</b>
	<b>Rearrangement frequency (95% CI)</b>	<b>0.23% (0.18–0.29)</b>		<b>0.38% (0.31–0.45)</b>		
<i>Family history</i>	1 <sup>st</sup> degree relatives of probands	30		35		43/62 <sup>2</sup>

<i>Ascertainment</i>	<i>Cohorts</i>	<b>Dup</b>		<b>Del</b>		<b>Total</b>
		<b>n</b>	<b>p</b>	<b>n</b>	<b>p</b>	
<i>Adult psychiatric symptoms</i>	Schizophrenia, deCODE	0		1		657
	Bipolar disease, Rouen	1		0		156
	Schizophrenia, Schizo-affective, Rouen.	3		0		267
	<b>TOTAL</b>	<b>4</b>	<b>3.57e-03</b>	<b>1</b>	<b>3.78e-01</b>	<b>1080</b>
	<b>Rearrangement frequency (95% CI)</b>	<b>0.37% (0.01–0.73)</b>		<b>0.09% (0–0.27)</b>		
<i>Underweight</i>	Eating disorder, Spain	1 <sup>3</sup>		0		<b>441</b>
<i>Obesity</i>	Obesity, Spain	0		2		653
	Adult Obesity, France	0		4		705
	Childhood Obesity, France & UK	0		7		1574
	Obesity Bariatric Surgery, France	0		2		141
	Obesity Discordant Siblings, Sweden	0		2		159
	Obesity and Cognitive Delay, France & UK	0		9		312
	<b>TOTAL</b>	<b>0</b>	<b>4.21e-01</b>	<b>26</b>	<b>2.52e-19</b>	<b>3544</b>
	<b>Rearrangement frequency (95% CI)</b>	<b>0</b>		<b>0.73% (0.45–1.01)</b>		
<i>Population-based cohorts</i>	NFBC1966 Finnish	4		3		5319
	CoLaus Swiss	5		0		5612
	EGCUT Estonian	2		1		2994
	deCODE Iceland	17		18		36601
	SHIP Germany	1		2		4070
	KORA F3+F4 Germany	2		1		3458
	Pediatric family study	0		0		581
	<b>TOTAL</b>	<b>31</b>		<b>25</b>		<b>58635</b>
	<b>Rearrangement frequency (95% CI)</b>	<b>0.05% (0.03–0.07)</b>	<b>-</b>	<b>0.04% (0.03–0.06)</b>	<b>-</b>	

\*: Not a disease-specific cohort. Detailed distribution is provided in the online methods.

DD/ID: developmental delay/intellectual disabilities

<sup>1</sup>Fisher's exact test, compared to the combined frequency in general population groups.

<sup>2</sup>total number of parental pairs tested for dup/del. 13 out of 43 duplications and 27 out of 62 deletion cases were *de novo*.

<sup>3</sup>atypical duplication (see [Supplementary Figure S5](#))

<sup>4</sup>There was no overlap between these 3 cohorts

## Table 2

### Comparisons of the height, weight and BMI distributions in duplication carriers and controls

The available BMI, weight and height data for duplication carriers were transformed to Z-scores using gender- and age-matched reference populations, and one-sided *t*-tests were carried out to determine whether the mean Z-scores deviate from zero. Significant differences were identified by reference to cutoffs

controlling the false discovery rate (FDR) at 5% (see Methods); BMI – 0.022; weight – 0.032; height – 0.025 (significant results indicated in bold). Data were not available for all subjects.

	Combined <sup>2</sup>				DD/ID or psychiatric <sup>2</sup>			Non-medically ascertained <sup>3</sup>		
Strata	Mean Z-score	p-value	N <sup>1</sup>	Mean Z-score	p-value	N <sup>1</sup>	Mean Z-score	p-value	N <sup>1</sup>	
BMI	All	-0.47	<b>2.0e-03</b>	102	-0.56	<b>4.1e-03</b>	76	-0.45	<b>6.0e-03</b>	40
	Male	-0.54	<b>2.1e-02</b>	52	-0.71	<b>1.3e-02</b>	43	-0.31	2.0e-01	14
	Female	-0.4	<b>1.8e-02</b>	50	-0.37	8.3e-02	33	-0.52	<b>4.2e-03</b>	26
Weight	All	-0.56	<b>4.4e-04</b>	104	-0.65	<b>1.3e-03</b>	78	-0.61	<b>3.0e-03</b>	40
	Male	-0.64	<b>5.8e-03</b>	53	-0.79	<b>4.4e-03</b>	44	-0.57	8.8e-02	14
	Female	-0.47	<b>1.7e-02</b>	51	-0.47	6.5e-02	34	-0.63	<b>8.6e-03</b>	26
Height	All	-0.24	4.8e-02	103	-0.33	3.6e-02	77	-0.15	1.8e-01	40
	Male	-0.34	4.5e-02	52	-0.4	4.6e-02	43	-0.29	1.2e-01	14
	Female	-0.14	2.6e-01	51	-0.24	2.1e-01	34	-0.07	3.7e-01	26

<sup>1</sup>Relatives of probands were excluded as required, to avoid including more than one member of the same family in a single analysis

<sup>2</sup>Including 24 cases from the literature ([Supplementary Table S3](#)).

<sup>3</sup>Population-based cases and first-degree relatives of probands.