

Neurocognitive course at 2-year follow-up in a Swiss cohort of people with well-treated HIV

José Damas^a, Bruno Ledergerber^b, Isaure Nadin^c, Philip E. Tarr^d, Marcel Stoeckle^e, Ursi Kunze^f, Christoph Hauser^g, Klemens Gutbrod^h, Alexandra Calmyⁱ, Frédéric Assal^j, Patrick Schmid^k, Thomas Hundsberger^l, Caroline Di Benedetto^m, Stefania Rossiⁿ, Barbara Hasse^b, Ladina Schlosser^o, Renaud Du Pasquier^p, Katharine E.A. Darling^a, Matthias Cavassini^a, and the NAMACO study group

Objective: The aim of this study was to examine neurocognitive course over time among people with well treated HIV.

Design: The Neurocognitive Assessment in the Metabolic and Aging Cohort (NAMACO) study is an ongoing, prospective, longitudinal, multicenter and multilingual study within the Swiss HIV Cohort Study (SHCS). Participants undergo neuropsychological assessment at baseline and two-yearly follow-up.

Setting: Seven SHCS centres.

Participants: Patients aged at least 45 years enrolled in the SHCS with fluency in the local language (French, German or Italian) and agreeing to participate in the NAMACO study: 981 participants at baseline, 720 at 2-year follow-up of whom 644 had complete data sets.

Intervention: Standardized neuropsychological assessment at baseline and 2-year follow-up.

Main outcome measure: Neurocognitive performance using Frascati criteria and mean z-scores.

Results: Four participants (of 644, 0.6%) had plasma HIV-1 RNA more than 50 copies/ml; median CD4⁺ cell count was 660 cells/μl. According to Frascati criteria, 204 participants (31.7%) had neurocognitive impairment (NCI) at baseline. NCI severity in these participants changed little over 2 years and comprehensive models based on Frascati criteria were not feasible. Examining mean z-scores, however, we observed

^aService of Infectious Diseases, Lausanne University Hospital and University of Lausanne, Lausanne, ^bDepartment of Infectious Diseases and Hospital Epidemiology, Universitätsspital Zurich, University of Zurich, Zurich, ^cLaboratory of Neuroimmunology, Research Centre of Clinical Neurosciences, Department of Clinical Neurosciences, Lausanne University Hospital and University of Lausanne, Lausanne, ^dUniversity Department of Medicine, Kantonsspital Bruderholz, University of Basel, Bruderholz, ^eDepartment of Infectious Diseases and Hospital Epidemiology, Universitätsspital Basel, University of Basel, ^fMemory Clinic, Felix Platter Hospital, University Center for Medicine of Aging, Basel, ^gDepartment of Infectious Diseases, ^hDepartment of Neurology, Bern University Hospital, University of Bern, Bern, ⁱHIV unit, Infectious Diseases Division, Department of Medicine, University Hospital of Geneva, ^jDepartment of Neurology, University Hospital of Geneva and Faculty of Medicine, Geneva, ^kDivision of Infectious Diseases and Hospital Epidemiology Division, Kantonsspital St. Gallen, ^lDepartment of Neurology, Kantonsspital St. Gallen, St. Gallen, ^mInfectious Diseases Division, Ospedale Regionale di Lugano, Lugano, ⁿDepartment of Neurology, Neurocentre of Southern Switzerland, Ospedale Civico, Lugano, ^oNeuropsychology Unit, Department of Neurology, Universitätsspital Zurich, University of Zurich, Zurich, and ^pService of Neurology, Department of Clinical Neurosciences, Lausanne University Hospital and University of Lausanne, Lausanne, Switzerland.

Correspondence to Katharine E.A. Darling, Service of Infectious Diseases, Lausanne University Hospital and University of Lausanne, 1011 Lausanne, Switzerland.

Tel: + 41 21 314 04 18; e-mail: Katharine.Darling@chuv.ch

Received: 21 May 2021; revised: 6 August 2021; accepted: 9 August 2021.

DOI:10.1097/QAD.0000000000003057

ISSN 0269-9370 Copyright © 2021 The Author(s). Published by Wolters Kluwer Health, Inc. This is an open access article distributed under the terms of the Creative Commons Attribution-Non Commercial-No Derivatives License 4.0 (CCBY-NC-ND), where it is permissible to download and share the work provided it is properly cited. The work cannot be changed in any way or used commercially without permission from the journal.

neurocognitive stability or improvement over two years in five of seven neurocognitive domains assessed. Age at least 65 years ($P = 0.02$) and cognitive complaints ($P = 0.004$) were associated with neurocognitive decline, while black race ($P = 0.01$) and dolutegravir treatment ($P = 0.002$) were associated with improvement.

Conclusion: Frascati criteria were less sensitive in measuring NCI change and therefore unsuitable for following neurocognitive course in our cohort of people with well treated HIV. Examining neurocognitive course by mean z-score change, we observed stability or improvement. Copyright © 2021 The Author(s). Published by Wolters Kluwer Health, Inc.

AIDS 2021, **35**:2469–2480

Keywords: aging, HIV, HIV-associated neurocognitive disorder, neurocognitive impairment, neuropsychological testing

Introduction

Neurocognitive impairment (NCI) has been part of the natural history of HIV since the beginning of the pandemic. HIV-associated dementia prevalence has decreased due to the availability of well tolerated and effective antiretroviral therapy (ART). However, mild forms of NCI remain prevalent even with HIV viral suppression, affecting around 30% of people with HIV (PWH) [1,2]. Multiple non-HIV-related factors have been associated with NCI, including comorbidities, opportunistic infections and depression [3]. It has been argued that high NCI prevalence may be related to overdiagnosis of cases using current diagnostic tools [4,5]. Against this, longitudinal observational studies have described progression of mild, asymptomatic to symptomatic NCI over time [6,7].

The Neurocognitive Assessment in the Metabolic and Aging Cohort (NAMACO) study is a longitudinal study created to explore NCI within a well characterized and well treated cohort of PWH aged at least 45 years, as part of the Swiss HIV Cohort Study (SHCS) [3]. We previously presented the results derived from the baseline analyses of the NAMACO study, in which we reported NCI prevalence and the main associated factors associated with NCI [3]. In the current study, we present the longitudinal analysis of NAMACO study participants, using both categorical (NCI according to Frascati criteria) [8] and continuous (annualized changes of demographically adjusted z-scores) NCI definitions. The aim of the study was to examine NCI course over time and the main factors associated with neurocognitive performance change.

Materials and methods

Study design and participants

The NAMACO study is an ongoing prospective, longitudinal, multicenter and multilingual (French, German, and Italian) study nested within the SHCS [3,9].

SHCS patients aged at least 45 years, followed up at one of seven cantonal hospitals in Switzerland (Basel, Bern, Geneva, Lausanne, Lugano, St. Gallen and Zurich) and with sufficient fluency in the local language (French, German or Italian) to undergo neuropsychological assessment, were invited to participate in the NAMACO study between May 1, 2013, and November 30, 2016 (baseline). The ethics committees of each cantonal hospital center approved the NAMACO study protocol, and all patient participants signed informed consent prior to being included [3].

A total of 981 participants were recruited at baseline and underwent formal neuropsychological assessment. They were then invited to undergo repeat neuropsychological assessment at 2-year and 4-year follow-up visits. The current study examined baseline and two-year follow-up data collected between May 2013 and December 2018.

Procedures

At baseline and follow-up visits, NAMACO study participants completed a neuropsychological test battery covering seven cognitive domains correlated to HIV-associated NCI based on the International Network for Strategic Initiatives in Global HIV trials (INSIGHT) Strategic Timing of AntiRetroviral Treatment (START) study [10] (Supplemental Table 1, <http://links.lww.com/QAD/C268>). Assessment was conducted by trained neuropsychologists. Raw scores derived from testing were converted to a demographically adjusted standard score (z-score). Functional impairment was assessed using Lawton's Instrumental Activities of Daily Living (IADL) and Patient's Assessment of Own Functioning Inventory questionnaire (PAOFI) [11] wherein impairment was defined as difficulties in at least two items out of 11. Depressive symptoms were assessed using the Centre for Epidemiological Studies Depression Scale (CES-D) [12] wherein CES-D scores of 16–26 were taken to indicate risk of mild depression and scores at least 27 risk of severe depression. Cognitive complaints were assessed using the three European AIDS Clinical Society (EACS) screening questions on memory loss, mental slowing and attention

difficulties [13]. For each of the three EACS screening questions, response options were *never*, *hardly ever* or *yes, definitely*. Participants answering, *yes, definitely* to at least one question were considered to have cognitive complaints as previously described [14].

We examined NCI categorically using Frascati criteria [8] and continuously using mean z -scores. Using Frascati criteria, participants were classified as having no NCI, asymptomatic neurocognitive impairment (ANI), mild neurocognitive disorder (MND), HIV-associated dementia (HAD), and non-HIV-associated NCI. ANI and MND were defined as at least 1 SD below mean in at least two cognitive domains without (ANI) or with (MND) functional impairment, and HAD was defined as at least 2 SD below mean in at least two cognitive domains with functional impairment. Non-HIV associated NCI refers to NCI considered to be due to confounding conditions such as psychiatric disorders (including depression), substance use, ART toxicity and structural damage associated with neurodegenerative disorders, previous opportunistic central nervous system (CNS) infection, stroke, or trauma. The NAMACO study protocol and neuropsychological assessment details have been published elsewhere [3].

Participant clinical and demographic characteristics were obtained from the SHCS database from six-monthly SHCS visits, taking data from the SHCS visit closest in time to the neuropsychological assessment.

Outcomes

The primary outcome measures were Frascati category at 2-year follow-up, as described above, and annualized mean z -score changes. Mean z -scores were calculated for baseline and 2-year follow-up visits for the different neuropsychological tests across all cognitive domains. If neuropsychological tests were used for at least one domain, they were considered only once for the mean z -score calculation. The individual z -score changes were divided by the number of years between the baseline and follow-up assessments in order to obtain annualized z -score changes. In order to investigate factors associated with Frascati definition and z -score changes, we examined demographic and HIV-related characteristics, comorbidities, ART changes, and CNS penetration effectiveness (CPE) score (based on Letendre *et al.* definitions [15,16] as previously described [17]).

Statistical analysis

Analyses were performed through univariable and multivariable linear regression models. The following covariables were assessed in our univariable model: age, race/ethnicity, HIV acquisition mode, education, employment, depressive symptoms (CES-D), use of antidepressants, current intravenous and nonintravenous drug use, smoking, alcohol consumption, comorbidities (cardiovascular, metabolic, liver, kidney, and bone-

related), detectable viral load (HIV-1 RNA ≥ 50 copies ml^{-1}), CD4⁺ and CD8⁺ cell counts, CPE score, ART changes, hepatitis B or C virus coinfection, and opportunistic infections. We restricted our study to participants without missing values for covariables or endpoints (Frascati category and mean z -score changes) (Fig. 1).

The individual probabilities of dropping out of the study were obtained by multivariable logistic regression adjusted for all baseline characteristics. Univariable and multivariable linear regression models were subsequently weighted for the inverse probability of dropping out of the study. Models were built manually, adding clinical, demographic, and other baseline characteristics: EACS screening questions, age at least 65 years, black race, sex, nonintravenous drug use, depression (CES-D score ≥ 27 and/or antidepressant treatment), CD4⁺/CD8⁺ ratio, and HIV-1 viral load. We then added variables with a P value less than 0.2 in univariable analyses. The basic model selection (model 1) was based on Akaike and Bayesian information criteria. In model 2, we added the CPE score changes, and in model 3, we added changes in ART. Examining Frascati categories, we observed that NCI changes at 2 years were limited mainly to those between no NCI and ANI. As this could not be adequately modelled, we present only descriptive analyses. We used Stata IC 14.2 (StataCorp, College Station, Texas, USA) for all analyses.

Role of the funding source

The study funders had no role in study design, data collection, interpretation, or writing of the article. The corresponding author had full access to all study data and final responsibility for the decision to submit for publication.

Results

Of 981 participants recruited at baseline, 720 presented for 2-year follow-up of whom 644 had complete datasets (Fig. 1). There was no difference in clinical and demographic characteristics between these 644 participants and the 337 participants who did not attend or had incomplete datasets in terms of median age, sex, race/ethnicity, HIV acquisition mode, education, employment, HIV plasma viral load, or median CD4⁺ cell count. Reasons for not participating at two-year follow-up are listed in Fig. 1; 129 of 337 (48.9%) participants agreed to remain in the NAMACO study and attend 4-year follow-up.

At 2-year follow-up, participants had a median age of 55 years, with most (70.3%) aged 45–55 years, and 16.3% more than 65 years old. The majority were male (80.8%) and white (92.4%) (Table 1). Median CD4⁺ cell count was 660 cells/ μl and less than 1% of participants had

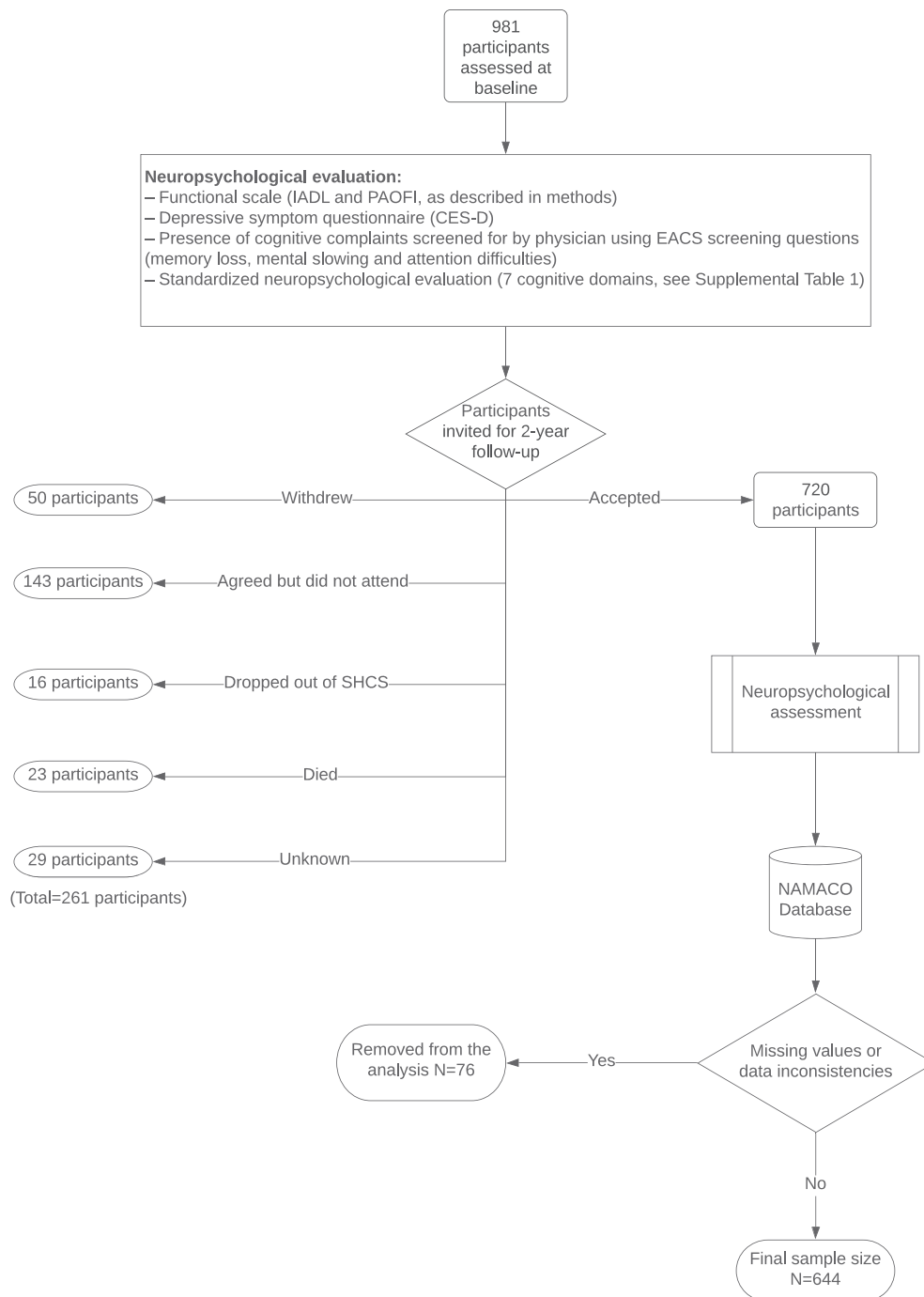


Fig. 1. Neurocognitive Assessment in the Metabolic and Aging Cohort (NAMACO) study design. CES-D, Centre for Epidemiologic Studies Depression scale; EACS, European AIDS Clinical Society; IADL, Instrumental Activities of Daily Living; PAOFI, Patients' Assessment of Own Functioning Inventory; Standardized neuropsychological evaluation (7 cognitive domains, see Supplemental Table 1, <http://links.lww.com/QAD/C268>).

detectable plasma HIV-1 RNA viremia (Table 2). Comparing baseline and follow-up characteristics, there were significant differences in age (as the population aged), employment (increased retirement due to aging), detectable HIV-1 RNA viremia, detectable hepatitis C viremia in coinfecting participants (eradication with treatment), and CPE score (Tables 1 and 2).

We also found differences in the distribution of Frascati criteria by language-region with 48, 72, and 57% having no NCI, and 3%, 20, and 43% having NCI, among French, German, and Italian-speaking centers, respectively. These differences are partly explained by sex, ethnicity, noninjecting drug use, and reported cognitive complaints as measured by EACS screening questions.

Table 1. Demographic characteristics, HIV acquisition mode, and smoking, alcohol, and drug use data for the 644 patients analyzed at baseline and 2-year follow-up.

	Baseline (N = 644)	Follow-up (N = 644)	P
Median (range) age (years)	53 (49–58)	55 (52–61)	<0.001
Sex			
Female	124 (19.3%)		
Male	520 (80.7%)		
Race / ethnicity			
White	595 (92.4%)		
Black	36 (5.6%)		
Asian	5 (0.8%)		
Latin American	8 (1.2%)		
HIV acquisition mode			
Heterosexual sex	191 (29.7%)		
MSM	357 (55.4%)		
IDU	75 (11.6%)		
Other	21 (3.3%)		
Education			1.0
Up to obligatory schooling	86 (13.4%)	86 (13.4%)	
Apprenticeship	316 (49.1%)	316 (49.1%)	
Secondary education	147 (22.7%)	147 (22.7%)	
Tertiary education	95 (14.8%)	95 (14.8%)	
Employment			0.01
No	169 (26.2%)	173 (26.9%)	
Yes	405 (62.9%)	366 (56.8%)	
Retired	70 (10.9%)	105 (16.3%)	
Smoke			0.55
Never	224 (34.8%)	221 (34.3%)	
Former	192 (29.8%)	209 (32.5%)	
Current	228 (35.4%)	214 (33.2%)	
Alcohol consumption			0.24
None/mild	537 (83.4%)	552 (85.7%)	
Moderate/severe	107 (16.6%)	92 (15.3%)	
Current nonintravenous drug use	88 (13.6%)	98 (15.2%)	0.42
Current IDU	3 (0.4%)	4 (0.6%)	0.70

Data are median (IQR), or *n* (%). *P* values obtained by the Pearson chi² or Fisher exact test for categorical variables, and by the Wilcoxon rank-sum nonparametric test for continuous variables.

Course of neurocognitive impairment and cognitive domains affected

At 2-year follow-up, 204 participants (31.7%) had NCI based on Frascati criteria: 126 (19.6%) with ANI, seven (1.1%) with MND, three (0.5%) with HAD, and 68 (10.6%) with non-HIV-associated NCI. NCI diagnosis changed in 149 participants (23.1%) between baseline and follow-up: 86 (57.7%) improved and 63 (42.3%) declined. Most changes occurred among participants with ANI who regained normal neurocognitive function (38.3%) and participants without NCI who developed ANI (22.1%) (Fig. 2a,b). Among participants with non-HIV-associated NCI, the most common diagnosis was psychiatric disorders (70.6%), most frequently depression (93.8%). Of 166 participants with CES-D scores of at least 16, 48 (28.9%) were on antidepressants.

The most affected cognitive domains at follow-up were motor skills (34.5%), attention and working memory (27.3%), and speed of information processing (27.0%). We observed a significant reduction in participants with sensory and perceptual skills impairment with time (Table 2). Examining mean *z*-score change by domain, greatest improvements occurred in speed of information processing, language, and executive function (Fig. 2c).

Functional impairment, as measured by IADL and PAOFI, was observed in 36 participants (5.59%), similar to baseline (*P* = 0.70).

No patient died from HIV/AIDS related causes. Oncological causes were recorded for six patients (Frascati: 2 none, 1 ANI, 1 HAD, and 2 other), cardiovascular causes were recorded for five patients (2 none, 1 ANI, 2 other), infectious causes were recorded for two patients (1 none, 1 other), two patients died in accidents (1 none, 1 other), two patients died of suicide (1 none, 1 ANI). For six patients, the cause of death was unknown. There was a significant difference in mortality between the different Frascati diagnoses (Fisher's exact *P* = 0.006, nonparametric test for trend *P* ≤ 0.001), but when excluding non-HIV associated NCI, this difference disappeared (Fisher's exact *P* = 0.21, nonparametric test for trend *P* = 0.38).

Predictors of annualized *z*-score changes

Figure 3 shows the results of univariable and multivariable linear regression models for annualized *z*-score changes. Models are weighted with the inverse probability of dropping out, obtained from logistic regression with a ROC AUC of 0.7. Univariable analyses showed mean *z*-

Table 2. HIV-related, comorbidity, and cognitive data for the 644 patients analyzed at baseline and 2-year follow-up.

	Baseline (N = 644)	Follow-up (N = 644)	P
HIV-1 RNA > 50 copies ml ⁻¹	20 (3.1%)	4 (0.6%)	0.001
CD4 ⁺ cell count nadir (cells/μl)	174.5 (74–270)	174.5 (74–270)	1.0
CD4 ⁺ cell count (cells/μl)	627.50 (464.5–807.5)	660 (500–870)	0.02
CD8 count (cells/μl)	707.50 (516.5–987)	710 (527–947)	0.76
CD4/CD8 ratio	0.89 (0.6–1.2)	0.92 (0.6–1.3)	0.05
Creatinine clearance (CKD-EPI)	87.22 (73.3–98.8)	78.2 (66.9–91.6)	<0.001
CPE score	7 (7–8)	8 (7–9)	<0.001
Treatment regime including Dolutegravir	18 (2.8)	196 (30.4)	<0.001
Comorbidities			
Cardiovascular disease	78 (12.1%)	83 (12.9%)	0.67
Metabolic disease	44 (6.8%)	46 (7.1%)	0.82
Liver disease	15 (2.3%)	18 (2.8)	0.59
Kidney disease	9 (1.4%)	9 (1.4%)	1.0
Bone disease	99 (15.4%)	107 (16.6%)	0.54
Hepatitis B	15 (2.3%)	15 (2.3%)	1.0
Hepatitis C	50 (7.8%)	29 (4.5%)	0.02
Toxoplasmosis	325 (50.5%)	325 (50.5%)	1.0
Cytomegalovirus	542 (84.2%)	542 (84.2%)	1.0
Syphilis (VDRL)	25 (3.9%)	29 (4.5%)	0.78
Depressive symptoms by CES-D scale			0.06
No symptoms	447 (69.4%)	476 (74.3)	
Mild depressive symptoms	136 (21.1%)	103 (16.1)	
Severe depressive symptoms	61 (9.5%)	63 (9.7)	
IADL	45 (6.9%)	36 (5.6%)	0.30
Neurocognitive domain affected			
Attention and working memory	182 (28.3%)	176 (27.3%)	0.70
Executive function	133 (20.7%)	96 (14.9%)	0.006
Language	36 (5.6%)	26 (4.1%)	0.14
Verbal episodic memory	104 (16.2%)	112 (17.4%)	0.60
Motor skills	239 (37.1%)	222 (34.5%)	0.32
Sensory and perceptual skills	22 (3.4%)	6 (0.9%)	0.001
Speed of information processing	193 (29.9%)	174 (27.0%)	0.24

Data are median (IQR), or *n* (%). *P* values obtained by the Pearson chi² or Fisher exact test for categorical variables, and by the Wilcoxon rank sum nonparametric test for continuous variables. CES-D scale, Center for Epidemiological Studies Depression scale; CKD-EPI, chronic kidney disease epidemiological collaboration; CPE score, central nervous system penetration effectiveness score; IADL, Instrumental Activities of Daily Living.

score decreases (neurocognitive decline) among participants aged more than 65 years (*P* = 0.01) and those with cognitive complaints at baseline (*P* = 0.04). In contrast, black race and ART change were independently associated with mean *z*-score increases. Although the number of participants with detectable hepatitis C viremia decreased with time, there was no association between hepatitis C treatment and improved neurocognitive performance (data not shown).

Multivariable analyses were repeated with different sets of covariables starting from our initial model (model 1, Fig. 3, Supplemental Table 2, <http://links.lww.com/QAD/C268>). Model 2 added CPE score changes and model 3 added ART changes to a dolutegravir-based regimen. We created model 3 because addition of dolutegravir was the most frequent treatment change we observed, occurring in 190 patients (29.5%) between baseline and follow-up, and because dolutegravir incidentally increases CPE score. After adjusting, the factors most strongly associated with annualized mean *z*-score decreases were cognitive complaints at baseline [−0.0416 (95% CI −0.0701 to −0.0131), *P* = 0.004], being aged more than 65 years [−0.0432 (95% CI −0.0799 to −0.0064), *P* = 0.02], and nonintravenous

drug use [−0.0338 (95% CI −0.0660 to −0.0016), *P* = 0.04] (Fig. 3, Supplemental Table 2, <http://links.lww.com/QAD/C268>). Conversely, starting ART regimens containing dolutegravir was associated with mean *z*-score increases [0.0361 (95% CI 0.0014–0.0707), *P* = 0.002]. An increase in mean *z*-score was also observed among black race participants [0.0698 (95% CI 0.0157–0.1239), *P* = 0.01].

Discussion

Among PLW aged at least 45 years with well treated HIV followed up over 2 years, we have observed that the majority of change was between the diagnoses of no NCI, ANI, and non-HIV associated NCI, with a trend towards improvement. *Z*-scores changed without changing Frascati category, making *z*-scores a more sensitive means of following NCI course over time. Previous cognitive complaints, aging, and nonintravenous drug use were associated with a decrease in *z*-scores, while black race and ART changes to dolutegravir were associated with an increase. Annualized changes in *z*-scores across all

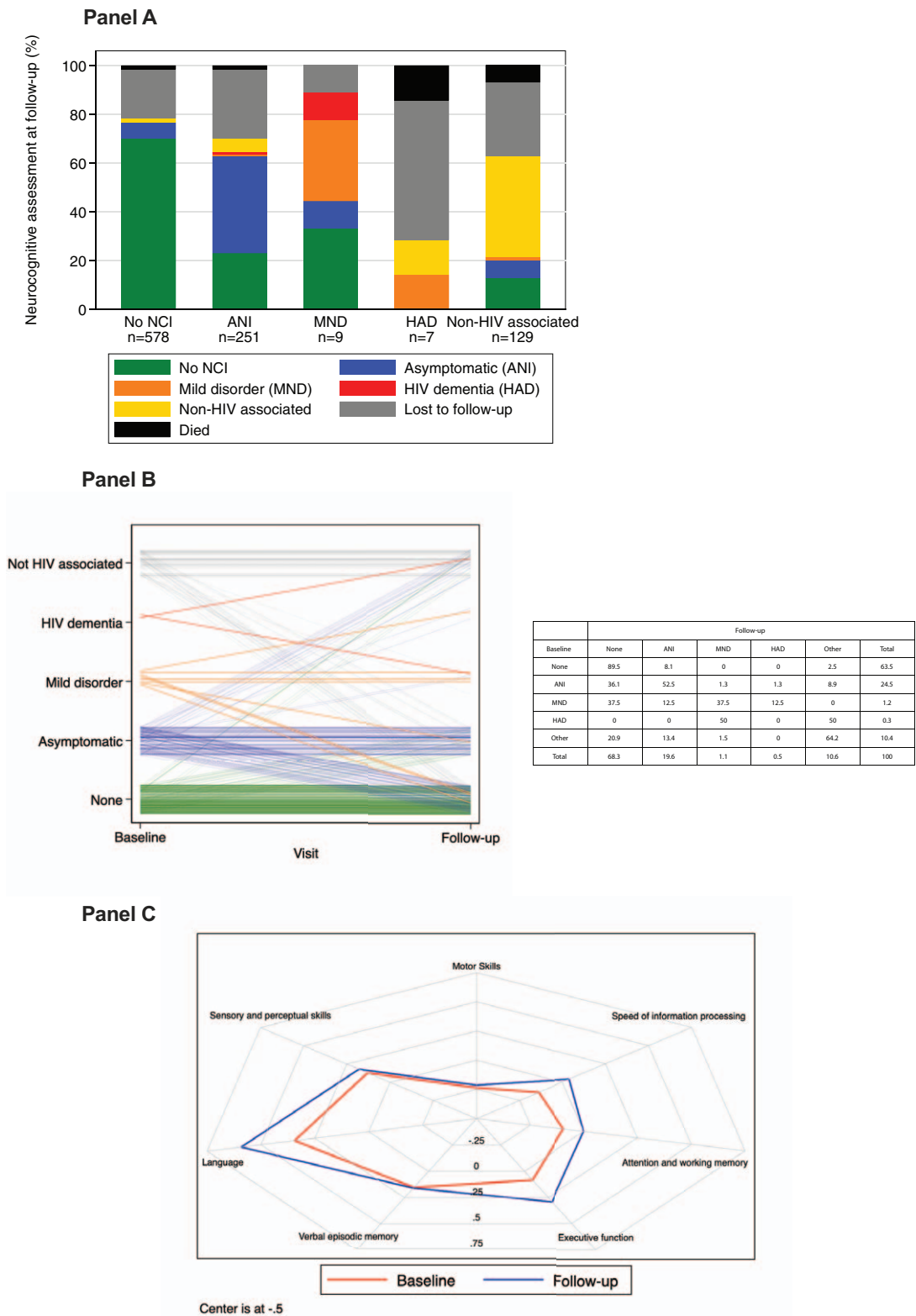
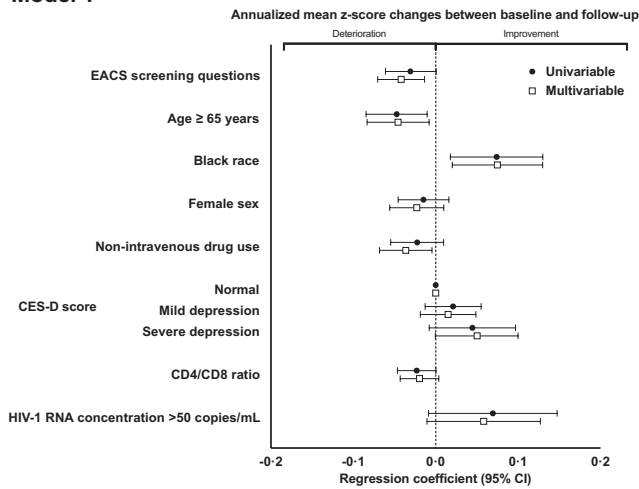
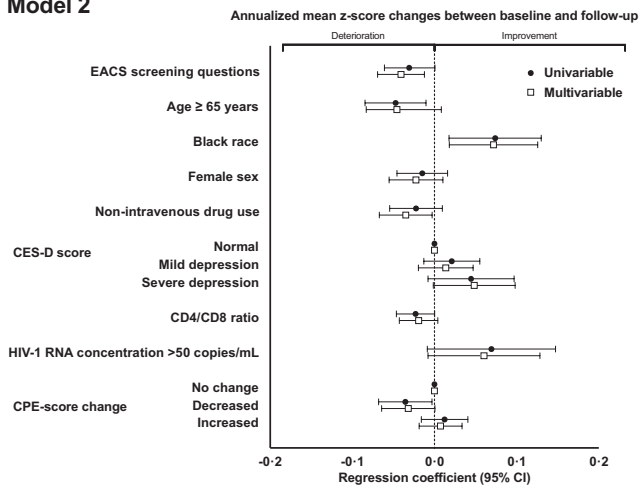


Fig. 2. Neurocognitive course from baseline to 2-year follow-up. (a) Bar chart showing neurocognitive course based on Frascati criteria. (b) Spaghetti plot, also based on Frascati criteria; percentages of each Frascati category in the adjacent table. (c) Radar plot showing cognitive course based on mean z-scores for each neurocognitive domain; each spoke of the radar plot represents a cognitive domain while spikes represent the magnitude of z-score changes per domain. ANI, asymptomatic neurocognitive impairment; MND, mild neurocognitive disease; HAD, HIV-associated dementia. Numbers are expressed in percentages.

Model 1



Model 2



Model 3

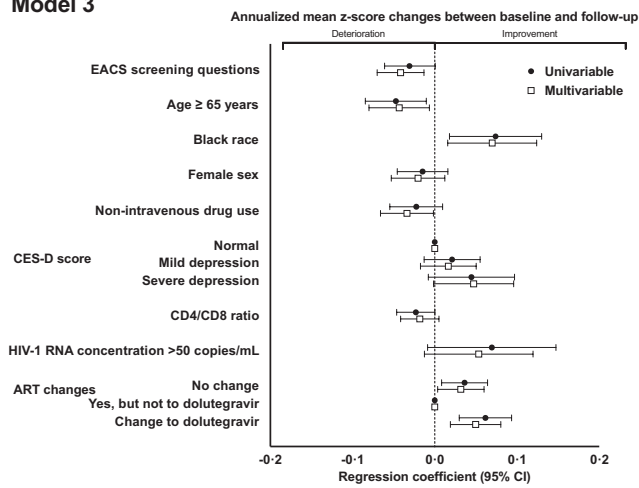


Fig. 3. Clinical and demographic factors associated with neurocognitive change as measured by annualized mean z-scores between baseline and 2-year follow-up in univariable and multivariable linear regression models. This figure corresponds to the data presented in supplemental, Table 2, <http://links.lww.com/QAD/C268>. ART, antiretroviral therapy; CES-D, Center for Epidemiological Studies Depression scale; CPE score, central nervous system penetration effectiveness score; EACS, European AIDS Clinical Society.

neurocognitive domains, whilst small, were towards improvement.

The continued use of Frascati criteria [8] in diagnosing HIV-associated NCI is a subject of controversy. A limitation of these criteria is the risk of false-positive cases, arising from the large number of neuropsychological tests performed and the assumption that resulting z -scores follow a normal distribution, which increase the odds of diagnosing ANI by chance [4,5]. In the current study, the most prevalent diagnosis at two-year follow-up was ANI (19.6%, compared with 24.5% at baseline). Only three participants developed HAD during the same period, two previously diagnosed with ANI, and one previously diagnosed with MND. Few studies have examined the course of ANI. Grant *et al.* [7] reported the course over a median of 45 months of 347 patients enrolled in the CHARTER study who had no NCI or were diagnosed with ANI at baseline. They observed that patients with ANI had a two to sixfold increased risk of developing symptomatic NCI, based on self-reports (IADL and PAOFI) and performance-based tests [7]. However, the CHARTER study population is not comparable to ours, as participants had different demographic characteristics and higher prevalence of detectable viremia [6,7]. In contrast, Cole *et al.* [18] of the Multicenter AIDS Cohort (MAC) study, addressing long-term psychomotor performance prior to the arrival of new ART, found that neuropsychological evaluations remained stable after 5 years. In our study among PLW with well treated HIV, the follow-up period, at 2 years, is relatively short and the z -score changes we observed in individual cognitive domains and overall were small. This suggests that follow-up needs to continue over a longer period if marked changes in z -scores, or indeed clinically perceptible differences, are to occur. Although z -score changes were associated with clinical, demographic, and treatment characteristics of our population, our follow-up period was shorter than the CHARTER and MAC study follow-up periods [7,19]. If NCI course is slow, we would not notice deterioration at the 2-year follow-up time point of our study. Analyses of the 4-year follow-up data will shed light on this.

The EACS screening questions [13] are part of the standard SHCS clinic visit. Previous studies have reported a weak association between these questions and NCI [20,21]. From baseline NAMACO study data, we reported low positive and negative predictive values of the EACS screening questions for the diagnosis of NCI [14]. In the current study, we looked for a longitudinal effect, defining NCI according to both Frascati criteria and mean z -scores to avoid possible errors by chance driven by ANI diagnosis. As self-reported tools could be indirect markers of depression [22], and although our models were adjusted for depression, we looked for associations excluding participants with CES-D scores more than 27 and those on antidepressants. The association between answering, *yes, definitely* to at least

one EACS screening question and NCI remained unchanged whether we examined Frascati categories (taking NCI as a dichotomous variable where ANI, MND, HAD, and non-HIV-associated NCI were grouped as NCI against *no NCI*) or mean z -scores. In summary, and contrary to previous publications, we did find an association between previous cognitive complaints and decreased neurocognitive performance at follow-up, even when adjusting for depression. Our hypothesis is that the EACS questions could reflect risk of subsequent neurocognitive decline rather than immediate neurocognitive performance.

Unsurprisingly, we noted a negative effect of aging on neurocognitive performance. There is no clear evidence for a putative accelerated decline of neurocognitive function in PWH [1,19,23,24]. Authors from the MAC study reported that the association between NCI and aging in HIV patients is not a linear process, with accelerated or natural decline being a consequence of multiple factors but with AIDS being the main driver for premature aging [25]. If we consider this nonlinearity, and assume different paths according to each patient's characteristics (viral load, CD4⁺ cell count, opportunistic infections), we could expect a natural neurocognitive decline in our well treated population, as HIV-effects are neutralized. Nonintravenous drug use was also associated with decreased neurocognitive performance in our study. Nonintravenous drug use has been observed to be associated with possible confounding factors such as co-medication with agents producing neurocognitive adverse effects [26], depression, and anxiety disorders [27]. It is possible that HIV and substance misuse work synergistically, affecting different neurological pathways, thus contributing to a double burden that leads to further cognitive deterioration [26].

We observed that black race and ART changes to dolutegravir were associated with improved neurocognitive performance. Regarding black race, although an improvement in z -scores was observed, participants were still underperforming, as their mean z -score was negative (impaired) at both visits. Although most participants of black race were African, to our knowledge, there is no evidence for ethnicity/race differences in the psychological tests we used, which would explain our results. Black participants had lower rates of confounding factors (smoking, alcohol, and drug consumption) compared with nonblack participants, and high levels of undetectable viremia. To put our observations into perspective, the observed improvement was derived from performance in a single domain, sensory, and perceptual skills, and this, in a small number of patients, is difficult to interpret. Of note, the improvement observed was not associated with antidepressant treatment. Regarding ART changes, we observed a decrease in use of the nonnucleoside reverse transcriptase inhibitor efavirenz, favoring dolutegravir use, and participants newly treated with dolutegravir had

improved neurocognitive performance. Although decreased efavirenz use was driven mainly by the fact that dolutegravir was part of new simplified treatment options, stopping efavirenz was listed by treating clinicians as being due to neurological or neuropsychological adverse effects in 26% of cases. Neuropsychiatric adverse effects associated with efavirenz have been widely described [28,29]. However, when analyzing neurocognitive performance in NAMACO participants with these complaints, most did not have NCI, and their main complaints were sleep deprivation and dizziness. As dolutegravir has the highest possible CPE score (four) [17], its increased use possibly explains the trend towards neurocognitive improvement observed with higher CPE scores (Fig. 3). We consider the improved neurocognitive performance in participants switched to dolutegravir as being due to an effect of clinical practice, as dolutegravir was the most common ART addition in our population (183 participants). Hence, as we observed a global trend towards improvement, new participants on dolutegravir will also follow this course. To support this argument, participants without ART changes also improved neurocognitive performance. We stress that the impact of dolutegravir use needs further investigation, especially in the long term, and that our study was not powered to show that dolutegravir prevents NCI in our population.

Our study has limitations. We have a considerable attrition bias due to the high lost to follow-up rate, which we attempted to account for by weighing our models. Most participants with HAD at baseline (four) were lost to follow-up at 2 years, which limits our understanding of factors associated with this group. Moreover, as MSM and whites were over-represented, there is potential recruitment bias. We also found differences in neurocognitive performance by centers that can only be partially explained by some covariables in our models. These differences were also observed by language region, suggesting that the language used for the neuropsychological assessment could play a role in these differences. However, as mean z -score change differences between baseline and follow-up were not large, and as by Frascati criteria we observed a trend to stability, we do not consider that language differences affected our study results. One of the strengths is that the NAMACO study represents the neurocognitive status of PWH aged at least 45 years throughout Switzerland. As our study recruited not only patients with previous cognitive complaints but also those without complaints, we can study NCI incidence as well as NCI course. As NAMACO study participants have well treated HIV, we can examine HIV-associated NCI in the “best-case” treatment scenario. Our neuropsychological test battery was performed by trained neuropsychologists rather than via computer so that participants with no computer skills could still be included. Finally, our assessment was performed in three languages (French, German, and Italian) to enable the majority of participants to be assessed in their native language.

In conclusion, we found that neurocognitive performance in a well treated population of PWH aged at least 45 years remains generally stable or improved at 2-year follow-up. We did not observe that ANI was a portal into more severe NCI but, on the contrary, was associated with stable or even improved cognition over time. As a consequence of this stability, we consider that Frascati criteria have limitations when analyzing NCI course in populations of PWH with low prevalence of non-ANI categories. These findings raise questions about the value of stigmatizing PWH with alleged cognitive deficits when they are asymptomatic. Analysis of our 4-year follow-up data will help address these questions. Finally, the factors we observe to be associated with NCI in our population suggest that adequate HIV treatment significantly decreases the chances of NCI incidence or progression.

Acknowledgements

We thank all the patients participating in the NAMACO study. We thank all the infectious disease physicians and the study nurses working in the centers for their dedicated patient work and contribution to the NAMACO study. We thank the neuropsychologists Samanta Simioni, Severin Fruh, Stefanie Clarke, and Stefania Rossi, for their work in NAMACO. Finally, we thank Dr Kevin Robertson for his advice regarding the selection of cognitive tests and his encouragement to launch the study, and to Prof Scott Letendre for providing support materials for some definitions in our study.

The NAMACO study group: director: Matthias Cavasini; co-director: Renaud Du Pasquier; neuropsychologists: Melanie Metral, Samanta Simioni, Peter Brugger, Klemens Gutbrod, Andreas U. Monsch, Ursi Kunze, Isaure Nadin, Severin Fruh, Ladina Schlosser, Marc Schwind, Riccardo Pignatti, Stefania Rossi, and Stefanie Clarke; neurologists: Frederic Assal, Tobias Derfuss, Sebastian von Arx, Gunter Eisele, Manuel Bertschi, Thomas Hundesberger, Michael Oberholzer, Illijaz Jelcic, Leonardo Sacco, and Renaud Du Pasquier; infectious disease specialists: Alexandra Calmy, Thanh Doco Lecompte, Christoph Hauser, Alexia Cusini, Helen Kovari, Barbara Hasse, Philip Tarr, Marcel Stoeckle, Christoph Fux, Enos Bernasconi, Caroline Di Benedetto, Patrick Schmid, Katharine Darling and Matthias Cavasini; SHCS data centre and data management unit: Alexandra Scherrer, Katharina Kusejko, Yannick Vallet, Valerie Sormani and Deolinda Alves; statistician: Bruno Ledergerber; pharmacologist: Catia Marzolini, Laurent Decosterd; neuro-imaging specialists: Cristina Granziera, Gunnar Krueger, Reto Meuli and Maria Vargas.

Members of the Swiss HIV Cohort Study: Aebi-Popp K, Anagnostopoulos A, Battegay M, Bernasconi E, Böni J, Braun DL, Bucher HC, Calmy A, Cavassini M, Ciuffi A,

Dollenmaier G, Egger M, Elzi L, Fehr J, Fellay J, Furrer H, Fux CA, Günthard HF (President of the SHCS), Haerry D (deputy of 'Positive Council'), Hasse B, Hirsch HH, Hoffmann M, Hösli I, Huber M, Kahlert CR (Chairman of the Mother & Child Substudy), Kaiser L, Keiser O, Klimkait T, Kouyos RD, Kovari H, Ledergerber B, Marti-netti G, Martinez de Tejada B, Marzolini C, Metzner KJ, Müller N, Nicca D, Paioni P, Pantaleo G, Perreau M, Rauch A (Chairman of the Scientific Board), Rudin C, Kusejko K (Head of Data Centre), Schmid P, Speck R, Stoeckle M (Chairman of the Clinical and Laboratory Committee), Tarr P, Trkola A, Vernazza P, Wandeler G, Weber R, Yerly S.

R.DP. and M.C. designed the study, and performed and supervised clinical and/or experimental aspects of the study. B.L. performed statistical analyses, and interpretation of study results. J.D. performed statistical analyses, interpretations of study results, and wrote the first draft of the manuscript. K.E.A.D. performed and supervised clinical and/or experimental aspects of the study, and participated in manuscript preparation. I.N., P.E.T., M.S., U.K., C.H., K.G., A.C., F.A., P.S., T.H., C.D.B., S.R., B.H., L.S. performed and supervised clinical and/or experimental aspects of the study. All authors participated in the final revisions of the manuscript and agreed its submission.

This project was funded by The Swiss National Science Foundation Grant #324730_192777/1.

Conflicts of interest

There are no conflicts of interest.

References

1. Heaton RK, Clifford DB, Franklin DR Jr, Woods SP, Ake C, Vaida F, et al. **HIV-associated neurocognitive disorders persist in the era of potent antiretroviral therapy: CHARTER Study.** *Neurology* 2010; **75**:2087–2096.
2. Simioni S, Cavassini M, Annoni JM, Rimbault Abraham A, Bourquin I, Schiffer V, et al. **Cognitive dysfunction in HIV patients despite long-standing suppression of viremia.** *AIDS* 2010; **24**:1243–1250.
3. Métral M, Darling K, Locatelli I, Nadin I, Santos G, Brugger P, et al. **The Neurocognitive Assessment in the Metabolic and Aging Cohort (NAMACO) study: baseline participant profile.** *HIV Med* 2020; **21**:30–42.
4. Underwood J, De Francesco D, Leech R, Sabin CA, Winston A, Pharmacokinetic and Clinical Observations in People Over Fifty (POPPY) Study. **Medicalising normality? Using a simulated dataset to assess the performance of different diagnostic criteria of HIV-associated cognitive impairment.** *PLoS One* 2018; **13**:e0194760.
5. Gisslen M, Price RW, Nilsson S. **The definition of HIV-associated neurocognitive disorders: are we overestimating the real prevalence?** *BMC Infect Dis* 2011; **11**:356.
6. Heaton RK, Franklin DR Jr, Deutsch R, Letendre S, Ellis RJ, Casaletto K, et al. **Neurocognitive change in the era of HIV combination antiretroviral therapy: the longitudinal CHARTER study.** *Clin Infect Dis* 2015; **60**:473–480.
7. Grant I, Franklin DR Jr, Deutsch R, Woods SP, Vaida F, Ellis RJ, et al. **Asymptomatic HIV-associated neurocognitive impairment increases risk for symptomatic decline.** *Neurology* 2014; **82**:2055–2062.
8. Antinori A, Arendt G, Becker JT, Brew BJ, Byrd DA, Cherner M, et al. **Updated research nosology for HIV-associated neurocognitive disorders.** *Neurology* 2007; **69**:1789–1799.
9. Schoeni-Affolter F, Ledergerber B, Rickenbach M, Rudin C, Günthard HF, et al. **Cohort profile: the Swiss HIV Cohort study.** *Int J Epidemiol* 2010; **39**:1179–1189.
10. Wright EJ, Grund B, Cysique LA, Robertson KR, Brew BJ, Collins G, et al. **Factors associated with neurocognitive test performance at baseline: a substudy of the INSIGHT Strategic Timing of AntiRetroviral Treatment (START) trial.** *HIV Med* 2015; **16** (Suppl 1):97–108.
11. Heaton RK, Marcotte TD, Mindt MR, Sadek J, Moore DJ, Bentley H, et al. **The impact of HIV-associated neuropsychological impairment on everyday functioning.** *J Int Neuropsychol Soc* 2004; **10**:317–331.
12. Simoni JM, Safren SA, Manhart LE, Lyda K, Grossman CI, Rao D, et al. **Challenges in addressing depression in HIV research: assessment, cultural context, and methods.** *AIDS Behav* 2011; **15**:376–388.
13. European AIDS Clinical Society. Guidelines. Version 8.0. Brussels, Belgium: European AIDS Clinical Society; 2015.
14. Métral M, Nadin I, Locatelli I, Tarr PE, Calmy A, Kovari H, et al. **How helpful are the European AIDS Clinical Society cognitive screening questions in predicting cognitive impairment in an aging, well treated HIV-positive population?** *HIV Med* 2020; **21**:342–348.
15. Letendre S, Ellis RJ. **Neurologic complications of HIV disease and their treatments.** *Top HIV Med* 2006; **14**:21–26.
16. Letendre SL, Mills AM, Tashima KT, Thomas DA, Min SS, Chen S, et al. **ING116070: a study of the pharmacokinetics and antiviral activity of dolutegravir in cerebrospinal fluid in HIV-1-infected, antiretroviral therapy-naive subjects.** *Clin Infect Dis* 2014; **59**:1032–1037.
17. Santos GMA, Locatelli I, Métral M, Calmy A, Lecompte TD, Nadin I, et al. **Cross-sectional and cumulative longitudinal central nervous system penetration effectiveness scores are not associated with neurocognitive impairment in a well treated aging human immunodeficiency virus-positive population in Switzerland.** *Open Forum Infect Dis* 2019; **6**:ofz277.
18. Cole MA, Margolick JB, Cox C, Li X, Selnes OA, Martin EM, et al. **Longitudinally preserved psychomotor performance in long-term asymptomatic HIV-infected individuals.** *Neurology* 2007; **69**:2213–2220.
19. Sacktor N, Skolasky RL, Seaberg E, Munro C, Becker JT, Martin E, et al. **Prevalence of HIV-associated neurocognitive disorders in the Multicenter AIDS Cohort Study.** *Neurology* 2016; **86**:334–340.
20. Underwood J, De Francesco D, Post FA, Vera JH, Williams I, Boffito M, et al. **Associations between cognitive impairment and patient-reported measures of physical/mental functioning in older people living with HIV.** *HIV Med* 2017; **18**:363–369.
21. van den Dries LWJ, Wagener MN, Jiskoot LC, Visser M, Robertson KR, Adriani KS, et al. **Neurocognitive impairment in a chronically well suppressed HIV-infected population: the Dutch TREVI Cohort Study.** *AIDS Patient Care STDS* 2017; **31**:329–334.
22. Blackstone K, Moore DJ, Heaton RK, Franklin DR Jr, Woods SP, Clifford DB, et al. **Diagnosing symptomatic HIV-associated neurocognitive disorders: self-report versus performance-based assessment of everyday functioning.** *J Int Neuropsychol Soc* 2012; **18**:79–88.
23. Goodkin K, Miller EN, Cox C, Reynolds S, Becker JT, Martin E, et al. **Effect of ageing on neurocognitive function by stage of HIV infection: evidence from the Multicenter AIDS Cohort Study.** *Lancet HIV* 2017; **4**:e411–e422.
24. Cole JH, Caan MWA, Underwood J, De Francesco D, van Zoest RA, Wit F, et al. **No evidence for accelerated aging-related brain pathology in treated human immunodeficiency virus: longitudinal neuroimaging results from the Comorbidity in Relation to AIDS (COBRA) Project.** *Clin Infect Dis* 2018; **66**:1899–1909.
25. Molsberry SA, Lecci F, Kingsley L, Junker B, Reynolds S, Goodkin K, et al. **Mixed membership trajectory models of cognitive impairment in the multicenter AIDS cohort study.** *AIDS* 2015; **29**:713–721.

26. Martin EM, Gonzalez R, Vassileva J, Bechara A. **Double dissociation of HIV and substance use disorder effects on neurocognitive tasks dependent on striatal integrity.** *AIDS* 2019; **33**:1863–1870.
27. Radtke KK, Bacchetti P, Anastos K, Merenstein D, Crystal H, Karim R, *et al.* **Use of nonantiretroviral medications that may impact neurocognition: patterns and predictors in a large, long-term HIV cohort study.** *J Acquir Immune Defic Syndr* 2018; **78**:202–208.
28. Ciccarelli N, Fabbiani M, Di Giambenedetto S, Fanti I, Baldo-nero E, Bracciale L, *et al.* **Efavirenz associated with cognitive disorders in otherwise asymptomatic HIV-infected patients.** *Neurology* 2011; **76**:1403–1409.
29. Letendre SL, Ellis RJ, Ances BM, McCutchan JA. **Neurologic complications of HIV disease and their treatment.** *Top HIV Med* 2010; **18**:45–55.