

Keywords: gamma-glutamyltransferase; prognosis; survival; renal cancer; kidney cancer; decision curve; discrimination; concordance

Pretherapeutic gamma-glutamyltransferase is an independent prognostic factor for patients with renal cell carcinoma

S L Hofbauer^{1,4}, K I Stangl^{1,4}, M de Martino¹, I Lucca^{1,2}, A Haitel³, S F Shariat¹ and T Klatte^{*,1}

¹Department of Urology, Comprehensive Cancer Center, Medical University of Vienna and General Hospital, Währinger Gürtel 18-20, 1090 Vienna, Austria; ²Department of Urology, Centre hospitalier universitaire vaudois, Rue du Bugnon 46, 1011 Lausanne, Switzerland and ³Clinical Institute of Pathology, Medical University of Vienna, Vienna General Hospital, Währinger Gürtel 18-20, 1090 Vienna, Austria

Background: Gamma-glutamyltransferase (GGT) regulates apoptotic balance and promotes cancer progression and invasion. Higher pretherapeutic GGT serum levels have been associated with worse outcomes in various malignancies, but there are no data for renal cell carcinoma (RCC).

Methods: Pretherapeutic GGT serum levels and clinicopathological parameters were retrospectively evaluated in 921 consecutive RCC patients treated with nephrectomy at a single institution between 1998 and 2013. Gamma-glutamyltransferase was analysed as continuous and categorical variable. Associations with RCC-specific survival were assessed with Cox proportional hazards models. Discrimination was measured with the C-index. Decision-curve analysis was used to evaluate the clinical net benefit. The median postoperative follow-up was 45 months.

Results: Median pretherapeutic serum GGT level was 25 U l⁻¹. Gamma-glutamyltransferase levels increased with advancing T ($P < 0.001$), N ($P = 0.006$) and M stages ($P < 0.001$), higher grades ($P < 0.001$), and presence of tumour necrosis ($P < 0.001$). An increase of GGT by 10 U l⁻¹ was associated with an increase in the risk of death from RCC by 4% (HR 1.04, $P < 0.001$). Based on recursive partitioning-based survival tree analysis, we defined four prognostic categories of GGT: normal low (< 17.5 U l⁻¹), normal high (17.5 to < 34.5 U l⁻¹), elevated (34.5 to < 181.5 U l⁻¹), and highly elevated (≥ 181.5 U l⁻¹). In multivariable analyses that adjusted for the effect of standard features, both continuously and categorically coded GGT were independent prognostic factors. Adding GGT to a model that included standard features increased the discrimination by 0.9% to 1.8% and improved the clinical net benefit.

Conclusions: Pretherapeutic serum GGT is a novel and independent prognostic factor for patients with RCC. Stratifying patients into prognostic subgroups according to GGT may be used for patient counselling, tailoring surveillance, individualised treatment planning, and clinical trial design.

Renal cell carcinoma (RCC) accounts for $> 90\%$ of kidney cancers and for 2–3% of all adult malignancies (Jemal *et al*, 2011). In the European Union, there were $\sim 88\,400$ new cases and over 39 000 deaths from RCC in 2008 (Ljungberg *et al*, 2010). Approximately, 20% of patients present with metastatic disease and another 20% will develop metastases after being considered disease-free (de

Martino *et al*, 2013; Pichler *et al*, 2013). Once metastatic, patients with RCC have a poor prognosis with a median survival time of ~ 2 years (Procopio *et al*, 2012). Prognostic factors that identify patients at an increased risk of recurrence, progression, and RCC-related death are needed to allow patient stratification into groups, which would facilitate clinical decision-making regarding

*Correspondence: Dr T Klatte; E-mail: tobias.klatte@gmx.de

⁴These authors contributed equally to this work.

Received 7 May 2014; revised 13 July 2014; accepted 15 July 2014; published online 12 August 2014

© 2014 Cancer Research UK. All rights reserved 0007–0920/14

surveillance scheduling, treatment planning in metastatic disease, and clinical trial design.

Besides its clinical use as a routine marker for hepatobiliary disease, studies indicate that the gamma-glutamyltransferase (GGT) plays an important role in cancer development and cancer progression (Whitfield, 2001; Corti *et al*, 2010). Gamma-glutamyltransferase is a membrane bound enzyme that is involved in the glutathione (GSH) metabolism. Glutathione is the main water-soluble antioxidant within the cell, neutralising reactive oxygen compounds and free radicals (Pastore *et al*, 2003). Both GGT and GSH are regularly elevated in pathological states of oxidative stress (Whitfield, 2001). In addition, GSH has been linked to tumour growth and survival, as it is the major provider of cysteine for the cell. Adequate supply with cysteine is essential for protein synthesis, especially for fast-dividing neoplastic cells (Hanigan and Ricketts, 1993). Recently, GGT has gained some attention as a prognostic biomarker for several types of cancer (Seebacher *et al*, 2012; Grimm *et al*, 2013), but there are no reports in RCC to our knowledge. We hypothesised that GGT plays an important role in RCC progression and metastasis. To test this, pretherapeutic GGT levels were associated with survival in a large consecutive cohort of patients with RCC.

PATIENTS AND METHODS

Institutional review board. The present study was approved by the institutional review board of the Medical University of Vienna and the Vienna General Hospital (protocol registration number 1201/2014) and performed according to the REMARK guidelines (McShane *et al*, 2005).

Patients. A total of 1287 patients with unilateral sporadic renal tumours were screened for inclusion in this single centre retrospective study. All patients underwent radical or partial nephrectomy for suspected RCC at the Department of Urology, Comprehensive Cancer Centre, Medical University of Vienna, Vienna, Austria, between 1998 and 2013.

Patients who were found to have renal tumours other than RCC ($n = 219$) and those with pre-existing comorbidities or medications related to elevated GGT (i.e., concomitant malignant disease, acute or chronic pancreatitis, acute or chronic hepatitis, liver cirrhosis, intra- or post-hepatic biliary obstruction, cholangitis, congestive heart failure NYHA III–IV, thyreostatic drugs, anticonvulsants, and alcohol abuse, $n = 147$) were excluded from the study. The final cohort comprised 921 patients. Clinical, laboratory, pathological, treatment, and follow-up data of these patients were extracted from electronic oncology registries.

Therapeutic management. Before surgery, a physical examination by a consultant in internal medicine and blood tests were conducted. All patients had a CT scan of the abdomen and an X-ray or a CT scan of the chest. If symptoms or abnormal laboratory signs exist, further imaging of the bones and brain was performed.

None of the patients had preoperative systemic therapy, local radiotherapy or embolisation. A total of 577 patients (63%) underwent radical nephrectomy, while 344 (37%) had partial nephrectomy. Patients with suspicious nodes on imaging or during the operation underwent a concomitant regional lymph node dissection ($n = 155$), with a median of four lymph nodes removed (range 1–25). Every other case was pNx but judged clinical N0. No patient received adjuvant therapy. Patients were further treated and generally followed according to the guidelines released by the European Association of Urology at that time. If patients did not present for scheduled follow-up visits, they were contacted by administrative personnel or through the primary care physician. The median follow-up interval was 45 months (interquartile range,

IQR 19–82). There were 103 deaths from RCC. All patients that died from RCC had widespread metastatic disease.

Diagnosis of RCC and subtype were established by histological examination of the surgical specimen according to the World Health Organization classification. The final T, N, or M stage was reassigned according to the 2009 Tumour, Node, Metastasis classification of the Union internationale contre le cancer. T stage was assigned pathologically and M stage was assigned clinically. Nuclear grade was assigned according to Fuhrman criteria. Presence of histological tumour necrosis was recorded prospectively. Over the entire study period, all histological examinations were performed by three expert uropathologists. Histological slides from 1998 to 2009 were re-reviewed by one pathologist (AH) for grade and subtype.

Gamma-glutamyltransferase measurement. Blood samples were obtained routinely by peripheral venous puncture within 3 days prior to surgery. All analyses were performed in the central laboratory of the Medical University of Vienna, which undergoes regular internal and external quality controls (accreditation number 0267, EN ISO 15189). Serum GGT levels were measured at 37°C on the day of sample collection. Measurements were performed with a Roche/Hitachi analyser (Modular Hitachi 747, Vienna, Austria) until 2008 and with an Olympus 5400 analyser (Vienna, Austria) thereafter using enzymatic colorimetric assays (Roche Diagnostics, Vienna, Austria). Gamma-glutamyltransferase activity was determined at 405 nm using γ -L-glutamyl-4-nitroanilide as the substrate and glycylglycine as an acceptor, which form 4-nitroaniline. All samples were assayed in duplicate. The intra-assay coefficient of variation was 2.3%. The normal values for the enzymatic colorimetric assay were 8–54 U l⁻¹ for men and 6–38 U l⁻¹ for women.

Statistical analysis. Gamma-glutamyltransferase levels were primarily analysed as continuous variable and are presented as medians and IQR. According to histogram plotting and Shapiro–Wilk statistics, GGT levels were not normally distributed. The Kruskal–Wallis test was therefore used to assess associations between GGT and categorical clinicopathological variables. Correlations were assessed with Spearman's rank correlation.

The primary point of interest was RCC-specific survival, which was calculated from the date of surgery to the date of death from RCC or last follow-up. Cause of death was determined from the death certificate or the clinical history. Patients who died from other causes or patients alive were censored with the date of death or last follow-up, respectively. The date of death and the cause of death were verified by the Austrian death registry.

Survival probabilities were calculated by the product limit Kaplan–Meier method, and differences were evaluated with log-rank tests. Univariable and multivariable Cox regression models were fitted. Multivariable models adjusted for the effect of standard prognostic factors including T stage (T3–4 vs T1–2), N stage (N+ vs N0), M stage (M1 vs M0), Fuhrman grade (G3–4 vs G1–2), necrosis (present vs absent), and histologic subtype (clear cell vs non-clear cell). In addition to a model with continuously coded GGT, a model with categorically coded GGT was fitted. Cutpoints for stratification were obtained from the nodes in recursive partitioning survival tree analysis. Results of Cox models are presented as hazard ratio (HR), 95% confidence interval (95% CI), and *P*-value. Owing to the fairly low numbers of events, there was a significant risk of overfit in multivariable modelling. Therefore, in a second set of multivariable analyses, we summarised prognostic factors with the SSIGN score (Frank *et al*, 2002) and the University of California Integrated Staging System (UISS; Zisman *et al*, 2002). Multivariable models were internally validated by bootstrapping (200 re-samples). Schoenfeld's global test was applied to test the proportional hazards assumption. Discrimination of Cox models was assessed with Harrell's concordance index. Discriminations

between nested models were compared with likelihood ratio tests. Decision-curve analysis was performed to determine whether models with GGT increased the net benefit over a realistic range of threshold probabilities compared with the base model. All statistical testing was two-sided. *P*-values <0.05 were considered statistically significant. The statistical package STATA was used for all analyses.

RESULTS

Clinical and pathological characteristics. Patient characteristics are shown in Table 1. Median age at the time of surgery was 64 years (IQR, 55–72). One hundred and thirty patients (14.1%) presented with lymph node or distant metastases. Further treatment of these patients following cytoreductive nephrectomy consisted of immunotherapy (33.1%), TKI (36.2%), metastasectomy (3.8%) or supportive care (26.9%). The majority of tumours were clear cell (74.4%).

Association of preoperative serum GGT with clinicopathological parameters. Median pretherapeutic GGT was 25 U^l⁻¹ (IQR, 15–55 U^l⁻¹). Gamma-glutamyltransferase increased with advancing T stage (*P*<0.001) and Fuhrman grade (*P*<0.001), and was higher in patients with lymph node metastases (*P* = 0.006), distant metastases (*P*<0.001), and tumours with histological tumour necrosis (*P*<0.001). Additionally, men had significantly higher GGT levels than women (*P*<0.001). In multivariable linear regression analysis,

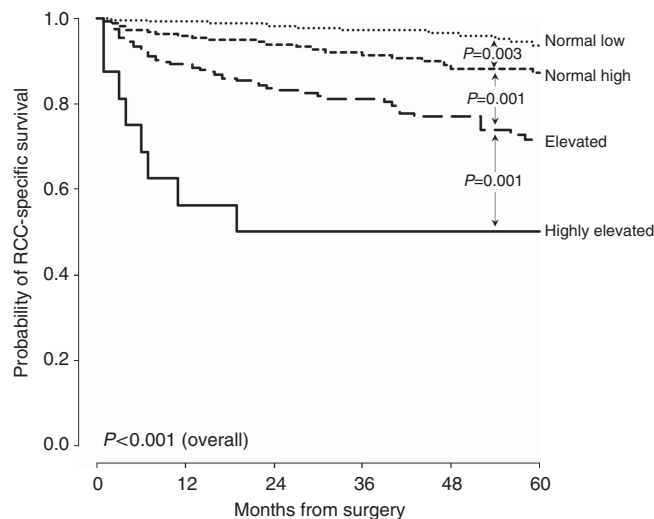
gender lost its significant association with GGT (*P* = 0.22). There was no association with histologic subtype (*P* = 0.14) and type of surgical treatment (*P* = 0.74), and GGT did not correlate with age (*R* = -0.02, *P* = 0.38), pathological tumour size (*R* = 0.003, *P* = 0.93), body mass index (*R* = -0.01, *P* = 0.82), bilirubin levels (*R* = 0.004, *P* = 0.89), and alkaline phosphatase levels (*R* = 0.028, *P* = 0.42). There was a statistically significant correlation with AST (*R* = 0.43, *P*<0.001) and ALT (*R* = 0.23, *P*<0.001).

Association of preoperative serum GGT with survival. In univariable analysis, each 10 U^l⁻¹ increase in GGT was associated with a 4% increase in the risk of death from RCC (HR 1.04, 95% CI 1.03–1.05, *P*<0.001). For stratification, the following four groups were defined based on the partitioning nodes: normal low (<17.5 U^l⁻¹), normal high (17.5 to <34.5 U^l⁻¹), elevated (34.5 to <181.5 U^l⁻¹), and highly elevated (≥181.5 U^l⁻¹). Of the 921 patients, 289 (31.4%) had normal low GGT, 315 (34.2%) had normal high GGT, 296 (32.1%) had elevated, and 21 (2.3%) highly elevated GGT. These groups differed significantly in terms of RCC-specific survival (Figure 1). Five-year survival probabilities are presented in Table 2.

In multivariable analysis that adjusted for the effect of standard prognostic factors, every 10 U^l⁻¹ increase in GGT was associated with a 3% increased risk of death from RCC (*P* = 0.001, Table 3A).

Variable	N (%)	Median (IQR; U ^l ⁻¹)	P
Gender			<0.001
Female	332 (36.0)	20 (12–38)	
Male	589 (63.9)	28 (18–48)	
pT stage			<0.001
pT1–2	548 (59.5)	23 (14–38)	
pT3–4	373 (40.5)	30 (18–52)	
pN stage			0.006
pNx/N0	892 (96.9)	24 (15–43)	
pN+	29 (3.1)	47 (21–92)	
M stage			<0.001
M0	803 (87.2)	23 (14–40)	
M1	118 (12.8)	41 (25–74)	
Fuhrman grade			<0.001
G1–2	685 (74.4)	23 (14–40)	
G3–4	236 (25.6)	30 (19–55)	
Tumour necrosis			<0.001
Absent	583 (63.3)	22 (14–40)	
Present	338 (36.7)	29 (18–49)	
Subtype			0.14
Clear cell	685 (74.4)	26 (15–46)	
Papillary	160 (17.4)	24 (15–38)	
Chromophobe	76 (8.3)	22 (13–40)	
Surgical approach			0.74
Radical nephrectomy	577 (62.6)	24 (15–46)	
Partial nephrectomy	344 (37.4)	26 (16–41)	

Abbreviations: GGT = gamma-glutamyltransferase; G1–4 = Fuhrman grade 1–4; IQR = interquartile range; M = metastasis; M0 = no distant metastasis; M1 = distant metastasis; pN = pathologic lymph node stage; pNx/N0 = lymph nodes not evaluated/tumour cells absent from regional lymph nodes; pN+ = presence of lymph node metastasis; pT = pathologic tumour stage; pT1–4 = size and/or extension of primary tumour.



	0	12	24	36	48	60
Normal low	231	194	170	154	120	
Normal high	214	164	132	107	84	
Elevated	193	141	108	82	55	
Highly elevated	9	5	3	3	1	

Figure 1. Kaplan–Meier survival estimates of RCC-specific survival for 921 patients treated with nephrectomy for RCC according to GGT groups.

Group	Reference interval	N (%)	Percentage at 5 years (s.e.)
Normal low	<17.5 U ^l ⁻¹	289 (31.4)	93.7 (1.9)
Normal high	17.5 to <34.5 U ^l ⁻¹	315 (34.2)	87.2 (2.7)
Elevated	34.5 to <181.5 U ^l ⁻¹	296 (32.1)	71.6 (3.8)
Highly elevated	≥181.5 U ^l ⁻¹	21 (2.3)	50.0 (12.5)

Abbreviations: GGT = gamma-glutamyltransferase; RCC = renal cell carcinoma.

Table 3. Multivariable Cox regression models for predicting RCC-specific survival of 921 patients treated with surgery for RCC, including (A) models with single pathological variables and summarised as SSIGN score (B) and UISS (C)

		Base model			Continuous GGT			Categorical GGT		
	Categories	HR	95% CI	P	HR	95% CI	P	HR	95% CI	P
A										
T stage	pT3–4 vs pT1–2	2.52	1.48–4.28	0.001	2.42	1.42–4.11	0.001	2.48	1.46–4.19	0.001
N stage	pN+ vs pNx/N0	2.22	1.27–3.89	0.005	2.01	1.14–3.54	0.015	1.96	1.08–3.56	0.026
M stage	M1 vs M0	15.59	9.64–25.23	<0.001	15.23	9.38–24.72	<0.001	13.80	8.42–22.60	<0.001
Grade	G3–4 vs G1–2	1.91	1.24–2.95	0.003	1.96	1.27–3.02	0.002	1.83	1.19–2.82	0.006
Necrosis	Present vs absent	1.06	0.69–1.65	0.78	1.11	0.71–1.73	0.65	1.06	0.68–1.65	0.81
Subtype	Clear vs not	0.99	0.57–1.73	0.98	0.93	0.54–1.63	0.81	0.88	0.50–1.56	0.67
GGT continuous	Continuous ^a	—	—	—	1.03	1.01–1.05	0.001	—	—	—
GGT categorical	Normal low	—	—	—	—	—	—	1.00	—	—
	Normal high	—	—	—	—	—	—	1.82	0.96–3.47	0.068
	Elevated	—	—	—	—	—	—	3.05	1.66–5.62	<0.001
	Highly elevated	—	—	—	—	—	—	5.60	2.17–14.46	<0.001
Discrimination, %		88.7			89.6			90.5		
B										
SSIGN score	Continuous	1.48	1.40–1.55	<0.001	1.45	1.38–1.53	<0.001	1.42	1.35–1.50	<0.001
GGT continuous	Continuous ^a	—	—	—	1.04	1.02–1.06	<0.001	—	—	—
GGT categorical	Normal low	—	—	—	—	—	—	1.00	—	—
	Normal high	—	—	—	—	—	—	1.98	1.04–3.75	0.036
	Elevated	—	—	—	—	—	—	3.37	1.83–6.21	<0.001
	Highly elevated	—	—	—	—	—	—	5.98	2.32–15.38	<0.001
Discrimination, %		88.5			89.4			90.2		
C										
UISS	Continuous	3.94	3.30–4.69	<0.001	3.85	3.23–4.59	<0.001	3.56	2.97–4.26	<0.001
GGT continuous	Continuous ^a	—	—	—	1.02	1.01–1.04	0.002	—	—	—
GGT categorical	Normal low	—	—	—	—	—	—	1.00	—	—
	Normal high	—	—	—	—	—	—	2.02	1.05–3.89	0.035
	Elevated	—	—	—	—	—	—	3.49	1.86–6.53	<0.001
	Highly elevated	—	—	—	—	—	—	5.95	2.32–15.24	<0.001
Discrimination, %		88.2			89.7			89.9		

Abbreviations: CI = confidence interval; G1–4 = Fuhrman grade 1–4. In all analyses, both continuously and categorically coded GGT were significant prognostic factors; GGT = gamma-glutamyltransferase; HR = hazard ratio; M = metastasis, M0 = no distant metastasis; M1 = distant metastasis; pNx/N0 = lymph nodes not evaluated/tumour cells absent from regional lymph nodes; pN+ = presence of lymph node metastasis; pT1–4 = size and/or extension of primary tumour; RCC = renal cell carcinoma; SSIGN = Mayo Clinic Stage, Size, Grade, and Necrosis; UISS = University of California Integrated Staging System.

^aPer 10 UI⁻¹.

In the multivariable model with categorically coded GGT, there was a continuous increase in the risk of death from RCC with increasing GGT categories (Table 3A). The base model with the variables T, N, M stages and nuclear grade, histologic subtype, and tumour necrosis achieved a discrimination of 88.7%. Inclusion of continuously and categorically coded GGT increased the discrimination by 0.9% ($P = 0.008$) and by 1.8% ($P < 0.001$), respectively.

In another set of multivariable analyses, prognostic variables were summarised as SSIGN score and UISS. Both continuously and categorically coded GGT were significant prognosticators (Table 3B and C). The discrimination of the SSIGN score increased after addition of continuously or categorically coded GGT to the model (from 88.5% to 89.4%, $P = 0.003$, and from 88.5% to 90.2%, $P < 0.001$). Likewise, there was a significant increase in discrimination

of UISS with continuously (from 88.2% to 89.7%, $P < 0.001$) and categorically coded GGT (from 88.2% to 89.9%, $P < 0.001$).

Decision-curve analysis was performed to determine whether models with GGT increased the net benefit over the base model. In this analysis, a small net benefit was noted for categorically coded GGT, while there was no difference in the curves between the base model and the model with continuously coded GGT (Figure 2).

DISCUSSION

This study shows that pretherapeutic serum GGT is an independent prognostic factor for patients with RCC, with higher levels being

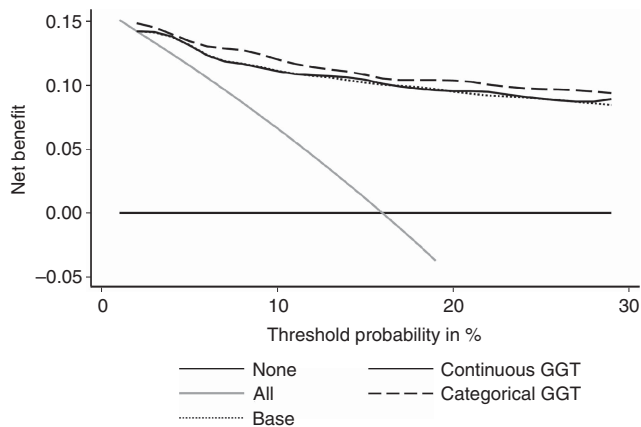


Figure 2. Decision-curve analysis for predicting RCC-specific survival. Categorically coded GGT conveyed a small increase in net benefit, while there was no difference in net benefit between the base model and the model with continuously coded GGT.

associated with worse outcomes. In addition to statistical significance in multivariable analysis, GGT increased the discrimination of a multivariable base model and improved the clinical net benefit.

Studies indicate that GGT is a prognostic biomarker for several cancer entities (Polterauer *et al*, 2011; Seebacher *et al*, 2012; Grimm *et al*, 2013), but data for RCC are limited. Previous studies focused on GGT levels in relation to metastatic disease, but did not evaluate survival. Sandock *et al* (1997) and Simic *et al* (2007) showed that GGT is elevated in patients with metastatic disease. In their studies comprising 82 and 216 patients, respectively, elevated levels of GGT were independently associated with metastatic disease irrespective of hepatic involvement. The authors hypothesised that GGT is increased due to quantitative changes in GGT expression and necrotic alterations within the tumour. These data are in line with the current study, which show higher levels of GGT in patients with advanced tumours and metastases. Ramankulov *et al* (2007) were not able to associate GGT with metastatic disease, but their study comprised only 80 patients. To our knowledge, the current study is the first to include a survival analysis. We show that higher serum GGT levels are associated with worse RCC-specific survival in both univariable and multivariable analyses. Importantly, categorically coded GGT increased the discrimination of a multivariable base model by a modest degree and led to an improvement in the decision-curve analysis.

In the present study, males had significantly higher GGT levels (median difference 8 U l^{-1}) compared to their female counterparts ($P < 0.001$). It is known that serum levels of GGT differ between healthy men and women (Schiele *et al*, 1977), which is reflected in a higher upper reference interval for men. For healthy individuals in the 60+ age group, gender differences in GGT are between 6.5 and 17.6 U l^{-1} for healthy individuals. In our RCC cohort, gender was not a predictor of GGT in the multivariable linear regression model ($P = 0.22$). Further, although GGT levels commonly increase with age and BMI (Lee *et al*, 2007), we found no association between these two variables and GGT. The variability of GGT in cancer cells may therefore be linked with an altered cancerous metabolism or the pivotal role of GGT in carcinogenesis and tumour progression. In addition, dietary and environmental factors may impact GGT in the serum and within the tumour, but were not assessed in the current study. Further prospective translational and basic research studies should focus on these issues.

For accurate prediction of RCC prognosis, one variable alone is not sufficient. Therefore, models have been established that combine several independent prognostic factors. As an example, the SSIGN score combines T, N, M stages, tumour size, grade, and necrosis to stratify patients into different risk groups (Frank *et al*,

2002). The discrimination of the SSIGN score is $> 85\%$, but it can be further improved with prognostic biomarkers (Ficarra *et al*, 2006; de Martino *et al*, 2012a,b). In the present study, the SSIGN score and the UISS were used as multivariable base model. Addition of GGT to the SSIGN score and the UISS revealed statistical significance and increased its discrimination by a modest margin. Importantly, addition of categorical GGT led to an improvement in the net benefit, as an increase in discrimination does not necessarily equal an improvement in clinical decision-making. As the SSIGN score was developed for clear cell RCC, the UISS was used for similar multivariable analyses (Zisman *et al*, 2002). Here, the discrimination and the increase in discrimination were comparable. Therefore, both scores appear to be applicable for prognostic stratification of the current RCC cohort.

In the past years, studies focused on the biology of GGT in cancer development, progression, and drug resistance. It has been shown that GGT and subsequently GSH are essential components of the antioxidant defence by quenching free radicals on DNA (Whitfield, 2001; Pastore *et al*, 2003). Through this mechanism, it is also able to protect cells from cytotoxic damage caused by various chemotherapeutic drugs (Russo *et al*, 1986). Further research revealed a role in assuring the proliferative-apoptotic balance by exerting pro-oxidant effects at the membrane surface level and in the extracellular microenvironment (Corti *et al*, 2010). By providing cysteine, GSH has been linked with tumour growth and survival (Hanigan and Ricketts, 1993).

In normal tissue, GGT activity has been shown on the luminal surface of secretory and absorptive cells including superficial cells of the bile ducts, bile capillaries, and the brush border membrane of the proximal tubules of normal kidneys (Fischer *et al*, 1991; Hanigan and Frierson, 1996). These surfaces are usually not connected to the circulation. In contrast, GGT is expressed over the entire cell surface in RCC (Fischer and Scherberich, 1996; Kaufmann *et al*, 1997) and is therefore accessible through the circulation. This may subsequently lead to elevated serum levels of GGT and higher intracellular levels of GSH (Lusini *et al*, 2001), which correlate with the tumour burden. In fact, GGT levels were significantly associated with tumour stage, grade, necrosis, and metastasis, although GGT levels may not be entirely explained by tumour burden. Further immunohistochemical studies may provide more information on the relationship between GGT expression within the tumour and serum levels in RCC patients.

Inadequate validation of potentially strong markers is a major problem in current biomarker research. As GGT is well established in clinical practice, subsequent evaluation of its clinical net benefit as a prognostic marker in patients with RCC in a large independent prospective cohort needs to be conducted. Thereafter, introduction of GGT as a clinical routine prognostic marker may be considered.

Several additional limitations of our study merit to be mentioned. Owing to the retrospective study design and the long study period, postoperative imaging and therapy were not standardised. The therapeutic management for metastatic RCC has changed within the study period. Compared to immunotherapy, new targeted therapies have shown superiority in terms of response and survival (Heng *et al*, 2013; Kroeger *et al*, 2013), which may have impacted our results. Further, the sample size and the relatively low number of events did not allow any further subanalyses. Cutpoint values for categorically coded GGT were ideal for our cohort of RCC patients, but differed slightly from those used for other malignancies (Strasak *et al*, 2010; Seebacher *et al*, 2012). By accepting cutpoints from other cancers that may not be perfectly applicable to RCC, the true prognostic value of GGT may be blurred (Mazumdar and Glassman, 2000). Hence, we have obtained cutpoints for RCC from the nodes of recursive partitioning and additionally evaluated GGT as continuously coded variable without categorisation.

In summary, we identified pretherapeutic serum GGT as a novel and independent prognostic biomarker for patients with RCC. Gamma-glutamyltransferase improves the discrimination of established prognostic factors. Stratifying patients into subgroups according to GGT may be used for patient counselling, tailoring surveillance, individualised treatment planning, and clinical trial design. Further validation studies are necessary.

REFERENCES

- Corti A, Franzini M, Paolicchi A, Pompella A (2010) Gamma-glutamyltransferase of cancer cells at the crossroads of tumor progression, drug resistance and drug targeting. *Anticancer Res* **30**: 1169–1181.
- de Martino M, Hoetzenecker K, Ankersmit HJ, Roth GA, Haitel A, Waldert M, Klatter T (2012a) Serum 20S proteasome is elevated in patients with renal cell carcinoma and associated with poor prognosis. *Br J Cancer* **106**: 904–908.
- de Martino M, Klatter T, Haitel A, Marberger M (2012b) Serum cell-free DNA in renal cell carcinoma: a diagnostic and prognostic marker. *Cancer* **118**: 82–90.
- de Martino M, Klatter T, Seemann C, Waldert M, Haitel A, Schatzl G, Remzi M, Weibl P (2013) Validation of serum C-reactive protein (CRP) as an independent prognostic factor for disease-free survival in patients with localised renal cell carcinoma (RCC). *BJU Int* **111**: E348–E353.
- Ficarra V, Martignoni G, Lohse C, Novara G, Pea M, Cavalleri S, Artibani W (2006) External validation of the Mayo Clinic Stage, Size, Grade and Necrosis (SSIGN) score to predict cancer specific survival using a European series of conventional renal cell carcinoma. *J Urol* **175**: 1235–1239.
- Fischer P, Scherberich JE (1996) Hybridomas reveal shared immunodominant epitopes of gamma-glutamyltransferase isoforms from human kidney and renal cell carcinoma. *Tumour Biol* **17**: 369–377.
- Fischer P, Störkel S, Haase W, Scherberich JE (1991) Differential diagnosis of histogenetically distinct human epithelial renal tumours with a monoclonal antibody against gamma-glutamyltransferase. *Cancer Immunol Immunother* **33**: 382–388.
- Frank I, Blute ML, Chevillat JC, Lohse CM, Weaver AL, Zincke H (2002) An outcome prediction model for patients with clear cell renal cell carcinoma treated with radical nephrectomy based on tumor stage, size, grade and necrosis: the SSIGN score. *J Urol* **168**: 2395–2400.
- Grimm C, Hofstetter G, Aust S, Mutz-Dehbalae I, Bruch M, Heinze G, Rahhal-Schupp J, Reinthaller A, Concin N, Polterauer S (2013) Association of gamma-glutamyltransferase with severity of disease at diagnosis and prognosis of ovarian cancer. *Br J Cancer* **109**: 610–614.
- Hanigan MH, Frierson HF (1996) Immunohistochemical detection of gamma-glutamyl transpeptidase in normal human tissue. *J Histochem Cytochem* **44**: 1101–1108.
- Hanigan MH, Ricketts WA (1993) Extracellular glutathione is a source of cysteine for cells that express gamma-glutamyl transpeptidase. *Biochemistry* **32**: 6302–6306.
- Heng DYC, Xie W, Regan MM, Harshman LC, Bjarnason GA, Vaishampayan UN, Mackenzie M, Wood L, Donskov F, Tan M-H, Rha S-Y, Agarwal N, Kollmannsberger C, Rini BI, Choueiri TK (2013) External validation and comparison with other models of the International Metastatic Renal-Cell Carcinoma Database Consortium prognostic model: a population-based study. *Lancet Oncol* **14**: 141–148.
- Jemal A, Bray F, Center MM, Ferlay J, Ward E, Forman D (2011) Global cancer statistics. *CA Cancer J Clin* **61**: 69–90.
- Kaufmann O, Dietel M, Scherberich JE, Gaedicke G, Fischer P (1997) Immunohistochemical differentiation of metastases of renal carcinomas versus other carcinomas with anti-gamma GT monoclonal antibody 138H11. *Histopathology* **31**: 31–37.
- Kroeger N, Xie W, Lee J-L, Bjarnason GA, Knox JJ, Mackenzie MJ, Wood L, Srinivas S, Vaishampayan UN, Rha S-Y, Pal SK, Yuasa T, Donskov F, Agarwal N, Kollmannsberger CK, Tan M-H, North SA, Rini BI, Choueiri TK, Heng DYC (2013) Metastatic non-clear cell renal cell carcinoma treated with targeted therapy agents: characterization of survival outcome and application of the International mRCC Database Consortium criteria. *Cancer* **119**: 2999–3006.
- Lee DS, Evans JC, Robins SJ, Wilson PW, Albano I, Fox CS, Wang TJ, Benjamin EJ, D'Agostino RB, Vasan RS (2007) Gamma glutamyl transferase and metabolic syndrome, cardiovascular disease, and mortality risk: the Framingham Heart Study. *Arterioscler Thromb Vasc Biol* **27**: 127–133.
- Ljungberg B, Cowan NC, Hanbury DC, Hora M, Kuczyk MA, Merseburger AS, Patard J-J, Mulders PFA, Sinescu IC (2010) EAU guidelines on renal cell carcinoma: the 2010 update. *Eur Urol* **58**: 398–406.
- Lusini L, Tripodi SA, Rossi R, Giannerini F, Giustarini D, del Vecchio MT, Barbanti G, Cintorino M, Tosi P, Di Simplicio P (2001) Altered glutathione anti-oxidant metabolism during tumor progression in human renal-cell carcinoma. *Int J Cancer* **91**: 55–59.
- Mazumdar M, Glassman JR (2000) Categorizing a prognostic variable: review of methods, code for easy implementation and applications to decision-making about cancer treatments. *Stat Med* **19**: 113–132.
- McShane LM, Altman DG, Sauerbrei W, Taube SE, Gion M, Clark GM (2005) REporting recommendations for tumour MARKer prognostic studies (REMARK). *Br J Cancer* **93**: 387–391.
- Pastore A, Federici G, Bertini E, Piemonte F (2003) Analysis of glutathione: implication in redox and detoxification. *Clin Chim Acta* **333**: 19–39.
- Pichler M, Hutterer GC, Stojakovic T, Mannweiler S, Pummer K, Zigeuner R (2013) High plasma fibrinogen level represents an independent negative prognostic factor regarding cancer-specific, metastasis-free, as well as overall survival in a European cohort of non-metastatic renal cell carcinoma patients. *Br J Cancer* **109**: 1123–1129.
- Polterauer S, Hofstetter G, Grimm C, Rahhal J, Mailath-Pokorny M, Kohl M, Concin N, Tempfer C, Marth C, Reinthaller A (2011) Relevance of gamma-glutamyltransferase—a marker for apoptotic balance—in predicting tumor stage and prognosis in cervical cancer. *Gynecol Oncol* **122**: 590–594.
- Procopio G, Verzoni E, Iacovelli R, BIASONI D, Testa I, Porcu L, De Braud F (2012) Prognostic factors for survival in patients with metastatic renal cell carcinoma treated with targeted therapies. *Br J Cancer* **107**: 1227–1232.
- Ramankulov A, Lein M, Kristiansen G, Meyer H-A, Loening SA, Jung K (2007) Elevated plasma osteopontin as marker for distant metastases and poor survival in patients with renal cell carcinoma. *J Cancer Res Clin Oncol* **133**: 643–652.
- Russo A, DeGraff W, Friedman N, Mitchell JB (1986) Selective modulation of glutathione levels in human normal versus tumor cells and subsequent differential response to chemotherapy drugs. *Cancer Res* **46**: 2845–2848.
- Sandock DS, Seftel AD, Resnick MI (1997) The role of gamma-glutamyl transpeptidase in the preoperative metastatic evaluation of renal cell carcinoma. *J Urol* **157**: 798–799.
- Schiele F, Guilmin AM, Detienne H, Siest G (1977) Gamma-glutamyltransferase activity in plasma: statistical distributions, individual variations, and reference intervals. *Clin Chem* **23**: 1023–1028.
- Seebacher V, Polterauer S, Grimm C, Rahhal J, Hofstetter G, Bauer E-M, Husslein H, Leipold H, Marth C, Reinthaller A, Concin N (2012) Prognostic significance of gamma-glutamyltransferase in patients with endometrial cancer: a multi-centre trial. *Br J Cancer* **106**: 1551–1555.
- Simic T, Dragicevic D, Savic-Radojevic A, Cimbaljevic S, Tulic C, Mimic-Oka J (2007) Serum gamma glutamyl-transferase is a sensitive but unspecific marker of metastatic renal cell carcinoma. *Int J Urol* **14**: 289–293.
- Strasak AM, Goebel G, Concin H, Pfeiffer RM, Brant LJ, Nagel G, Oberaigner W, Concin N, Diem G, Ruttman E, Gruber-Moesenbacher U, Offner F, Pompella A, Pfeiffer KP, Ulmer H (2010) Prospective study of the association of serum gamma-glutamyltransferase with cervical intraepithelial neoplasia III and invasive cervical cancer. *Cancer Res* **70**: 3586–3593.
- Whitfield JB (2001) Gamma glutamyl transferase. *Crit Rev Clin Lab Sci* **38**: 263–355.
- Zisman A, Pantuck AJ, Wieder J, Chao DH, Dorey F, Said JW, deKernion JB, Figlin RA, Belldregrun AS (2002) Risk group assessment and clinical outcome algorithm to predict the natural history of patients with surgically resected renal cell carcinoma. *J Clin Oncol* **20**: 4559–4566.

This work is published under the standard license to publish agreement. After 12 months the work will become freely available and the license terms will switch to a Creative Commons Attribution-NonCommercial-Share Alike 3.0 Unported License.