

Review

Negative symptoms in children and adolescents with early-onset psychosis and at clinical high-risk for psychosis: systematic review and meta-analysis

Gonzalo Salazar de Pablo, Ana Catalan, Julio Vaquerizo Serrano, Borja Pedruzo, Luis Alameda, Veronica Sandroni, Alvaro Armendariz, Victoria Rodriguez, Celso Arango, Carmen Moreno, Johnny Downs, Chris Abbott, Jae Il Shin, Marco Solmi, Paolo Fusar-Poli* and Christoph U. Correll*

Background

Early-onset psychosis (EOP) refers to the development of a first episode of psychosis before 18 years of age. Individuals at clinical high risk for psychosis (CHR-P) include adolescents and young adults, although most evidence has focused on adults. Negative symptoms are important prognostic indicators in psychosis. However, research focusing on children and adolescents is limited.

Aims

To provide meta-analytical evidence and a comprehensive review of the status and advances in the diagnosis, prognosis and treatment of negative symptoms in children and adolescents with EOP and at CHR-P.

Method

PRISMA/MOOSE-compliant systematic review (PROSPERO: CRD42022360925) from inception to 18 August 2022, in any language, to identify individual studies conducted in EOP/CHR-P children and adolescents (mean age <18 years) providing findings on negative symptoms. Findings were systematically appraised. Random-effects meta-analyses were performed on the prevalence of negative symptoms, carrying out sensitivity analyses, heterogeneity analyses, publication bias assessment and quality assessment using the Newcastle–Ottawa Scale.

Results

Of 3289 articles, 133 were included ($n = 6776$ EOP, mean age 15.3 years (s.d. = 1.6), males = 56.1%; $n = 2138$ CHR-P, mean

age 16.1 years (s.d. = 1.0), males = 48.6%). There were negative symptoms in 60.8% (95% CI 46.4%–75.2%) of the children and adolescents with EOP and 79.6% (95% CI 66.3–92.9%) of those at CHR-P. Prevalence and severity of negative symptoms were associated with poor clinical, functional and intervention outcomes in both groups. Different interventions were piloted, with variable results requiring further replication.

Conclusions

Negative symptoms are common in children and adolescents at early stages of psychosis, particularly in those at CHR-P, and are associated with poor outcomes. Future intervention research is required so that evidence-based treatments will become available.

Keywords

Early-onset psychosis; psychotic disorders; meta-analysis; clinical high risk of psychosis; prevention.

Copyright and usage

© The Author(s), 2023. Published by Cambridge University Press on behalf of the Royal College of Psychiatrists. This is an Open Access article, distributed under the terms of the Creative Commons Attribution licence (<http://creativecommons.org/licenses/by/4.0/>), which permits unrestricted re-use, distribution and reproduction, provided the original article is properly cited.

Early-onset psychosis (EOP) refers to the development of a first episode of psychosis before the age of 18 years.¹ EOP is characterised by a high frequency of negative symptoms.² Negative symptoms are defined as a reduction of normal functions related to either motivation and interest (e.g. avolition, anhedonia and asociality) or expressive functions (e.g. blunted affect and alogia)³ and can be evaluated categorically based on their presence/absence or continuously based on their severity. Younger age at onset is associated with more negative symptoms at follow-up,⁴ and the severity of negative symptoms is associated with several poor outcomes.^{5–7} Negative symptoms are challenging to identify in young people,⁸ and over 60% of individuals with EOP experience ‘poor’ long-term outcomes and unmet therapeutic needs.⁹ Furthermore, the prevalence of negative symptoms in EOP and their effect on prognosis remains unclear.⁶

Prior research in populations at clinical high risk for psychosis (CHR-P) typically includes adolescents and young adults¹⁰ from

different risk groups, including ultra-high risk criteria (Supplementary eTable 1, available at <https://doi.org/10.1192/bjp.2022.203>) and basic symptom criteria (Supplementary eTable 2). However, most of the evidence examining negative symptoms focuses on adult or mixed CHR-P samples, with relatively little research focusing on children and adolescents.^{11,12} However, in children and adolescents at CHR-P, negative symptoms have been found to be clinically relevant and sometimes predominant psychopathologically.¹³ Negative symptoms have also been associated with poor outcomes and poor recovery levels in this population.¹⁴

To our knowledge, no previous meta-analysis has evaluated the prevalence of negative symptoms in children and adolescents with EOP or at CHR-P or investigated the influence of moderating factors, such as gender, age or study design, on the prevalence of negative symptoms. From a diagnostic and prognostic perspective, previous systematic reviews and meta-analyses have variously examined the link between negative symptoms and functioning in individuals at CHR-P,¹⁵ the association between cannabis and nicotine use and negative symptoms,¹⁶ the association between the duration of untreated psychosis and negative symptoms¹⁷ and the

* Equal contributors and joint senior authors.

relationship between depressive symptoms and negative symptoms.¹⁸ These studies have been limited in scope: they have just examined correlates of negative symptoms or outcomes associated with negative symptoms;^{15–18} none of these studies focused on children and adolescents; none comprehensively summarised the available evidence or provided methodological and research agenda recommendations to advance the field.

Previous meta-analyses have evaluated the efficacy of anti-psychotic medications for the treatment of psychotic symptoms in EOP, finding that most antipsychotics were efficacious for positive symptoms.^{19–21} Meta-analytical reports from a much smaller cohort of studies showed that antipsychotics reduced negative symptom scores compared with placebo, but no comparisons were statistically significant,¹⁹ except for clozapine in some studies,²² highlighting the need for further research on the treatment of negative symptoms. In the CHR-P field, research on therapeutic advances for children and adolescents has been even more limited, and most studies have focused on other outcomes, such as transition to psychosis.^{11,23}

Based on the above, the aim of this study was to (a) evaluate the prevalence of children and adolescents with EOP and at CHR-P who presented with negative symptoms and which factors increased or decreased this prevalence and (b) provide a comprehensive review of the current status and advances in the diagnosis, prognosis and treatment of negative symptoms in children and adolescents with EOP or at CHR-P. Our hypothesis was that negative symptoms would be at least as common in EOP as in adult-onset psychosis and as common in children and adolescents at CHR-P as in children and adolescents with EOP. We further hypothesised that the severity of negative symptoms would be associated with poor outcomes. Finally, we were keen to explore whether evidence for interventions for negative symptoms in both children and adolescents with EOP and children and adolescents at CHR-P was sufficient to recommend specific interventions above others.

Method

This systematic review and meta-analysis was registered in PROSPERO (CRD42022360925). It was conducted following the guidelines of the Preferred Reporting Items for Systematic Reviews and Meta-Analyses (PRISMA) 2020 statement²⁴ (Supplementary eTables 3 and 4) and Meta-analyses of Observational Studies in Epidemiology (MOOSE) checklist (Supplementary eTable 5),²⁵ following Enhancing the Quality and Transparency of Health Research (EQUATOR) reporting guidelines.²⁶

Search strategy and selection criteria

We performed a multi-step literature search (keywords in Supplementary eMethods1). First, the PubMed and Web of Science databases (Clarivate Analytics) were searched, incorporating the Web of Science Core Collection, BIOSIS Citation Index, KCI-Korean Journal Database, MEDLINE, Russian Science Citation Index and SciELO Citation Index, as well as the Cochrane Central Register of Reviews and Ovid/PsycInfo databases from inception until 18 August 2022, without language restriction. Second, we searched for data in relevant conference proceedings, including the Schizophrenia International Research Society (SIRS) and Early Intervention in Mental Health international conference (IEPA), as well as in trial registries (clinicaltrials.gov, WHO International Clinical Trials Registry Platform). Following recent guidelines,²⁷ search terms were simplified for the search conducted in conference proceedings and trial registries ('early-onset', 'adolescents' and 'negative symptoms'). Third, we completed our search by

reviewing the references of systematic reviews/meta-analyses retrieved during our search.

Articles identified were screened as abstracts by two researchers working independently (G.S.P., V.S.) and those that were irrelevant were screened out. The full texts of the remaining articles were assessed for eligibility against the inclusion and exclusion criteria, and decisions were made regarding their final inclusion in the systematic review by consensus or mitigation.

Inclusion criteria for the overall review and synthesis were (a) original individual studies, abstracts or conference proceedings, either cross-sectional, longitudinal, randomised clinical trials (RCTs) or other intervention studies, (b) providing relevant information/results on negative symptoms in our populations of interest, (c) conducted in children and adolescents (mean age <18 years, in line with previous reviews on children and adolescents at CHR-P),¹⁰ (d) conducted in children and adolescents diagnosed with EOP or at CHR-P as per validated instruments and diagnostic criteria (e.g. DSM-any version, ICD-any version and equivalents for EOP, Structured Interview for Psychosis-Risk Syndrome (SIPS), Scale of Psychosis-risk Symptoms (SOPS), Comprehensive Assessment of At-Risk Mental States (CAARMS) and equivalents^{28,29} for CHR-P), (f) published in any language. Exclusion criteria were (a) reviews, editorials or clinical cases, (b) studies reporting on other mental health conditions or with a mean age ≥18 years (since no similar review was found for EOP, studies including EOP individuals >25 years were excluded), (c) studies reporting only negative symptom scores (e.g. Positive and Negative Syndrome Scale scores) without relevant additional results regarding negative symptoms as per established validators, (d) studies without results in children and adolescents with EOP or at CHR-P. Overlap was allowed for the systematic review as long as the key findings were not identical. However, for the meta-analysis, an additional inclusion criterion was that of non-overlapping samples (≤50% overlapping sample) as per our protocol.

Outcome measures, covariates and data extraction

Researchers (B.P., J.V.S., A.A.) independently extracted data from all included studies into an Excel spreadsheet. Any discrepancies were resolved through consensus or consulting a senior researcher (G.S.P.) when necessary. The variables extracted can be found in Supplementary eMethods2.

Quality assessment

Quality was assessed using a modified version of the Newcastle–Ottawa Scale (NOS) for cross-sectional and cohort studies. Studies were awarded a maximum of eight points (items can be found in Supplementary eTable 6). Additionally, for RCTs, the Cochrane Risk of Bias Tool (RoB2) was used, and the overall quality was rated as low risk of bias, unclear risk of bias or high risk of bias (Supplementary eMethods 3).

Qualitative data synthesis

We provided a narrative synthesis of the findings from the included studies. The available evidence was structured into diagnostic factors, prognostic factors and therapeutic factors. Evidence was provided separately for children and adolescents with EOP and at CHR-P.

Quantitative meta-analysis

Random-effects meta-analytical estimates were computed independently and categorically for children and adolescents with EOP and at CHR-P, including the prevalence of EOP and CHR-P with negative

symptoms as per individual study definition. The meta-analyses were conducted using Stata/MP 16.0 with the metaprop package of STATA statistical software (StataCorp) for Mac,³⁰ which was developed for pooling proportions in a meta-analysis of multiple studies, and with Comprehensive Meta-Analysis Version 3 for Mac (Biostat, Inc., Englewood, NJ; https://www.meta-analysis.com/?gclid=CjwKCAiAk-dBhABEiwAchIwkc3gREJ81_iOw3KBdGL_G1_Qjf-md91Oeyg_fLmAecxJwF6HODAhOCbR0QAvD_BwE). The 95% confidence intervals (CIs) were derived from Wilson score procedures. Publication bias was assessed with the metafunnel function of Stata, which produces funnel plots for assessing small-study reporting bias in meta-analysis, and with Egger's test in the metabias function of Stata. Heterogeneity among study point estimates was assessed using *Q* statistics. The proportion of the total variability in the effect size estimates was evaluated with the *I*² index. Since we expected significant heterogeneity, random-effects models were used.

We conducted sub-analyses and meta-analytical regression analyses to estimate the association between the prevalence of negative symptoms and moderating factors. Sub-analyses included (a) decade of publication (1991–2000, 2001–2010, 2011–2022), (b) continent (Europe, Asia, North America, Africa – owing to availability of data), (c) age (studies including some young adults ≥ 18 years compared with those with only children and adolescents); (d) design (cross-sectional, longitudinal). Meta-regression analyses evaluated the influence of (a) publication year, (b) percentage of participants with schizophrenia, (c) sample size; (d) mean age, (e) percentage of males, (e) percentage on antipsychotics and (f) quality of the studies (NOS scores) on the results. Statistical significance was considered when $P < 0.05$.

Results

Our literature search identified 3289 studies; 3193 were screened at title and abstract level and 289 were assessed as full text against inclusion and exclusion criteria. Of those, 133 studies were finally included in the systematic review (Fig. 1): 129 (97%) were written in English and 4 (3%) in other languages; 100 (75.2%) focused on EOP, 29 (21.8%) on CHR-P and 4 (3%) on both. Across all studies, 9055 children and adolescents were included (6776 with EOP, 2138 at CHR-P and 141 without clear designation to one or the other diagnostic group). The sample size of the studies ranged from 10 to 638 (median 45). In total, 68 (51.1%) studies were carried out in Europe, 35 (26.3%) studies in North America, 24 (18.0%) in Asia, 2 (1.5%) in Australia, 1 (0.8%) in South America, 1 (0.8%) in Africa and 2 (1.5%) in more than one continent. Altogether, 127 studies (95.5%) were available as full manuscripts and 6 (4.5%) as abstracts/conference proceedings. Overall, 56 (42.1%) studies were cross-sectional, 52 (39.1%) were longitudinal observational studies, 14 (10.5%) were RCTs, and 11 (8.3%) were other intervention studies. The overall mean age of the participants was 15.5 years (s.d. = 1.6) and 54.1% were males. The mean age of participants with EOP was 15.3 years (s.d. = 1.6) and 56.1% were males. The mean age of participants at CHR-P was 16.1 years (s.d. = 1.0) and 48.6% were males.

Quality assessment

Overall, the quality of the included studies ranged from 1 to 8, with a median of 5 and a mean of 4.8 (s.d. = 1.4); 4 (28.6%) RCTs were rated as low risk of bias, 4 (28.6%) RCTs were rated as unclear risk of bias and 6 (42.9%) RCTs were rated as high risk of bias (Supplementary eTables 7 and 8). The quality of the studies evaluating children and adolescents with EOP ranged from 1 to 8, with a median of 5 and a mean of 4.7 (s.d. = 1.4) (Supplementary eTable 7).

The quality of the studies evaluating children and adolescents at CHR-P ranged from 3 to 8, with a median of 5 and a mean of 5.1 (s.d. = 1.3) (Supplementary eTable 8).

Systematic review in children and adolescents with EOP

Characteristics of the included studies ($n = 100$) and key findings related to children and adolescents with EOP can be found in Supplementary eTable 7. Findings evaluated at meta-analytical level will be reported separately below.

Diagnostic or detection factors

In total, 42 (42.0%) studies focused on diagnostic or detection factors. Findings related to diagnostic categories and subgroups can be found in Supplementary eResults 1, and findings related to neuroanatomical, neuroimaging and other neurobiological non-cognitive findings can be found in Supplementary eResults 2. Findings on clinical factors, functioning and quality of life and cognitive factors are synthesised below.

Altogether, 12 (12.0%) studies focused primarily on comorbidity and clinical factors. Negative symptoms were more severe in children and adolescents with EOP with higher levels of depression ($P = 0.023$).³¹ The prevalence of negative symptoms was associated with enuresis (OR = 1.93, $P < 0.05$) and incontinence during psychosis (OR = 3.35, $P = 0.005$).³² No overall differences in negative symptoms between children and adolescents with EOP with and without OCD were found ($P > 0.05$).^{33,34} A positive association was found between negative symptoms and emotional expression ($r = 0.58$, $P < 0.01$), involvement ($r = 0.54$, $P < 0.05$) and recall ($r = 0.48$, $P < 0.05$).³⁵ Also, an association was found between more severe negative symptoms and greater emotion regulation impairment ($\beta = 0.31$, $P = 0.02$).³⁶ Interestingly, children and adolescents with EOP who had never attempted suicide had more negative symptoms during the first episode than those with previous attempts ($P < 0.05$),³⁷ and the percentage with a history of suicide attempts was higher among those without persistent negative symptoms ($P = 0.002$).³⁸ There was an association between negative symptoms in males and a delayed puberty ($P = 0.001$), which did not appear in females.³⁹ A family history of psychosis^{40,41} or family burden⁴² did not seem to have an effect on negative symptoms ($P > 0.05$).

Altogether, 12 (12.0%) studies focused primarily on functioning and quality of life. In EOP, negative symptoms were associated with impairment in premorbid functioning ($P < 0.01$), global functioning ($P < 0.01$), social functioning ($P < 0.01$),^{43,44} role functioning ($P = 0.003$),⁴⁴ daily living skills ($r = -0.348$, $P < 0.05$),⁴⁵ peer relationships ($r = 0.26$, $P < 0.005$),⁴⁶ quality of life ($P < 0.001$)⁴⁷ and general unawareness ($r = 0.48$),⁴⁸ but not with unawareness about psychotic symptoms ($P > 0.05$).⁴⁸ Negative symptoms were increased in children and adolescents with EOP with declining social support compared with those with a stable social support group ($P < 0.05$).⁴⁹

Altogether, 7 (7.0%) studies focused primarily on cognitive factors. More negative symptoms were associated with smell identification deficits ($r = 0.47$, $P = 0.03$),⁵⁰ lower IQ ($r = 0.41$ – 0.63 , $P < 0.05$)^{50,51} and lower performance on some executive function and working memory tasks.⁴² Specifically, negative symptoms were associated with worse speed of processing at baseline ($r = 0.309$, $P < 0.05$) and 6-month follow-up ($r = 0.184$, $P < 0.05$),⁵² more perseverative errors ($r = 0.31$, $P < 0.05$), less phonological fluency ($r = -0.27$, $P < 0.05$), higher number of uncommon responses ($r = 0.27$, $P < 0.05$) and slower response time ($r = 0.44$, $P = 0.015$).⁵³ Additionally, specific negative symptoms were associated with specific cognitive domains. This included the association of apathy ($\beta = -0.257$, $P = 0.002$) and diminished expression ($\beta = -0.259$,

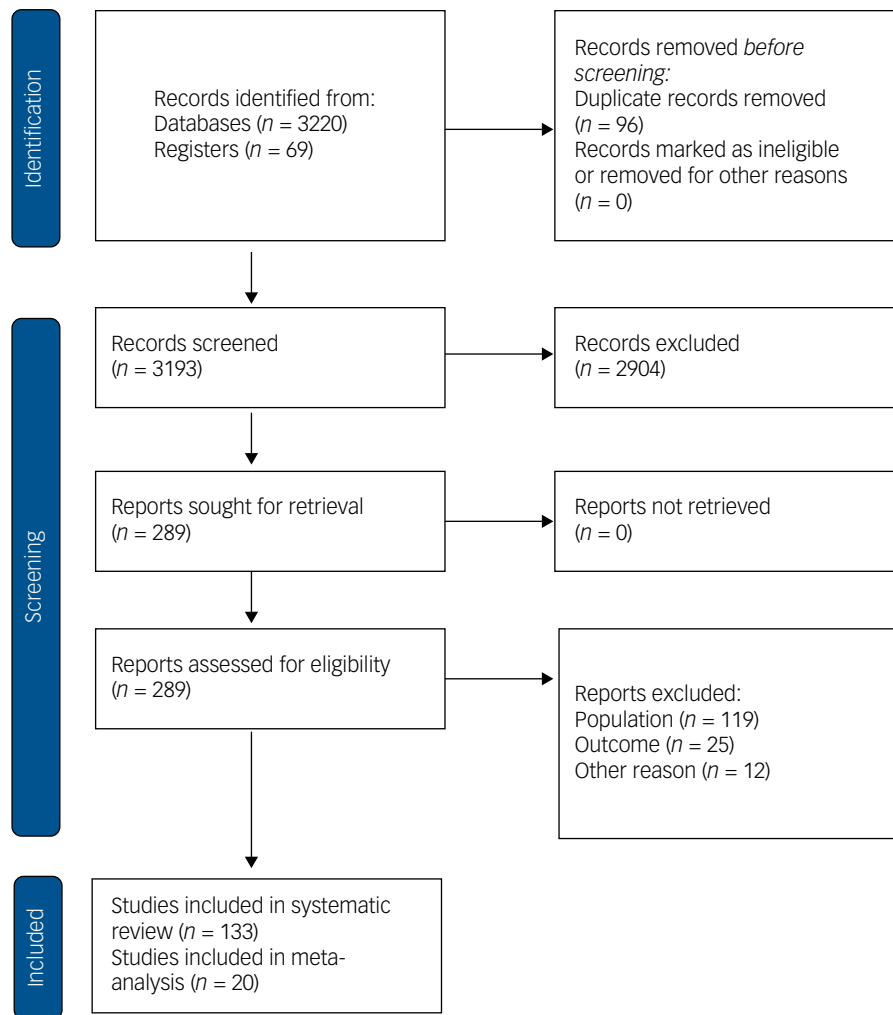


Fig. 1 Preferred reporting items for systematic reviews and meta-analyses (PRISMA) flowchart outlining the study selection process.

$P = 0.001$) with verbal learning; and of diminished expression with speed of processing ($\beta = -0.173$, $P = 0.024$).⁵⁴ However, no significant association was found between negative symptoms and attention ($P < 0.05$).⁵⁵

Prognostic factors

Altogether, 37 (37%) studies looked at longitudinal prognostic factors. The key factors about the changes in negative symptoms in children and adolescents with EOP and the factors that contribute to these changes are reported below following the same order as above (diagnostic categories and subgroups, clinical factors, functioning and quality of life, neurobiological findings and cognitive factors) including additionally prognostic therapeutic factors.

The trajectory of negative symptoms was variable. One study found worsening of negative symptoms after 6 months⁵⁶ and three others reported consistent and stable negative symptoms,^{57–59} including after as many as 42 years ($P = 0.935$).⁵⁹

Individuals who developed schizophrenia had more negative symptoms than those diagnosed with affective psychosis 1 year after their index admission ($P = 0.03$).⁶⁰ Negative symptoms at 2 years follow-up were more prominent in children and adolescents with EOP with lower baseline general symptoms ($r = -0.242$, $P = 0.043$) and more prominent negative symptoms at baseline ($P = 0.025$).⁶¹ Duration of untreated psychosis was higher in those

with persistent negative symptoms ($P = 0.022$).³⁸ Negative symptoms at baseline was the only variable that predicted functional outcome at 2-year follow-up ($P = 0.010$).⁶² Negative symptoms at baseline also predicted lower maximum levels of functioning achieved at 1-year ($\beta = 0.6$, $P = 0.005$) and 2-year follow-up ($\beta = 0.5$, $P = 0.003$).^{51,63} Greater improvement in negative symptoms correlated with a thinner frontal cortex at baseline ($r = 0.5$, $P = 0.003$).⁶⁴ There was also an association between left frontal cerebrospinal fluid (CSF) volume increase during follow-up ($r = 0.58$; $P = 0.003$) and left parietal CSF increase ($r = 0.45$; $P = 0.03$) and negative symptoms.⁶⁵ Interestingly, negative symptoms at baseline predicted an improvement in executive performance after 2 years ($\beta = 4.688$, $P = 0.008$).⁶⁶ Finally, negative symptoms at admission were predictors of poor treatment efficacy in EOP (OR = 0.945, $P = 0.009$).⁶⁷ In fact, negative symptoms were significantly associated with multiple treatment failures (HR = 1.62, $P = 0.02$).⁶

Therapeutic factors

Altogether, 37 (37%) studies looked directly or indirectly at therapeutic factors and response to interventions. Participants were not selected based on the presence of negative symptoms. The key advances in pharmacological interventions in RCTs, pharmacological interventions in other clinical trials, psychosocial interventions in RCTs and psychosocial interventions in other clinical trials are detailed below.

Evidence in EOP coming from RCTs was limited for pharmacological interventions. Clozapine decreased negative symptoms in treatment-resistant EOP compared with haloperidol in a double-blind RCT ($P = 0.002$).⁶⁸ Clozapine was also more efficacious than olanzapine in reducing negative symptoms in treatment-resistant EOP after 8 weeks ($P = 0.04$; $d = 0.89$)⁶⁹ and 12 weeks ($P = 0.02$, $d = 0.92$)⁷⁰ in another RCT. Treatment with lurasidone compared with placebo was associated with greater improvement in negative symptoms for children and adolescents with previously treated EOP ($P = 0.017$; $s.m.d. = 0.32$) but not in treatment-naïve children and adolescents with EOP.⁷¹ With regard to evidence from other intervention studies, negative symptoms improved after 20 days ($P < 0.001$)⁷² and 88 weeks⁷³ in an open-label trial with quetiapine. One study in children and adolescents with EOP found that negative symptoms responded better to aripiprazole than positive symptoms ($P = 0.028$).⁷⁴ In a randomised open-label study comparing olanzapine with risperidone, negative symptoms improved more with olanzapine after 8 weeks ($P < 0.01$)⁷⁵ and after 1 year,⁷⁶ and a $\geq 50\%$ reduction in negative symptoms was achieved more frequently with olanzapine (41.7%) than with risperidone (7.7%) ($P = 0.047$) (note that this difference disappeared following Bonferroni correction).⁷⁷ However, efficacy was similar for risperidone (14% decline in negative symptoms), olanzapine (17.7% decline) and haloperidol (19.2% decline) in another study.⁷⁸ No differences in negative symptom reduction were found between quetiapine and olanzapine ($P > 0.05$).⁷⁹ Similarly, no difference in efficacy for negative symptoms emerged between paliperidone and aripiprazole after 2 months ($P = 0.535$) or 6 months ($P = 0.696$).⁸⁰

Evidence from RCTs was also limited for psychosocial interventions. In one RCT a psychoeducation group for children and adolescents with EOP and their parents showed a greater reduction in negative symptoms than the non-structured group ($r = 0.41$).⁸¹ However, the improvement did not persist after 2 years.⁸² There was, though, an association between improvements in executive function and a reduction in negative symptoms ($P < 0.05$) in the psychoeducation group.⁸³ With regard to evidence from other intervention studies, participants attending a programme of residential out-patient care following discharge from a clinic showed a significantly greater decrease in negative symptoms than the control group ($P = 0.002$).⁸⁴ No differences in negative symptom improvement were found between cognitive-behavioural therapy (CBT) added to treatment as usual and treatment as usual only at the end of the intervention ($P = 0.317$), as well as at 9-month ($P = 0.169$) and 18-month follow-up ($P = 0.086$).⁸⁵

Systematic review in children and adolescents at CHR-P

Characteristics of the included studies ($n = 33$) and key findings related to CHR-P can be found in Supplementary eTable 8. Findings evaluated at meta-analytical level will be reported separately below.

Diagnostic or detection factors

Altogether, 13 (39.4%) studies focused primarily on diagnostic or detection factors. The key diagnostic and detection factors in CHR-P are reported below following the same order as above (diagnostic categories and subgroups, clinical factors, functioning and quality of life, neurobiological findings and cognitive factors).

More severe negative symptoms were associated with greater illness severity ($r = -0.39$, $P > 0.001$),⁸⁶ poorer current global functioning ($r = -0.26$; $P = 0.015$),⁸⁷ social functioning ($r = 0.38-0.47$, $P \leq 0.001$)^{87,88} and role functioning ($r = -0.25$; $P = 0.025$),⁸⁷ lower current functioning ($r = -0.17$; $P = 0.031$), lower lowest functioning in the past year ($r = -0.20$; $P = 0.014$) and lower highest functioning in the past year ($r = -0.19$; $P = 0.022$).⁸⁶ A correlation between

negative symptoms and depressive symptoms was also observed ($r = 0.380-0.533$, $P < 0.01$),^{89,90} particularly anhedonia ($P < 0.001$).⁹¹ No correlations between negative symptoms and attachment ($P > 0.05$)⁹² were found. No differences in negative symptoms were found between children and adolescents at CHR-P with attenuated negative/disorganised symptoms only, those with attenuated positive symptoms and those with schizophrenia-like psychosis ($P > 0.05$).⁹³ More individuals with negative symptoms were found among children and adolescents at CHR-P with major depressive disorder than without major depressive disorder (90.3% *v.* 68.2%, $P = 0.021$).⁸⁹ One study reported that 70% of children and adolescents at CHR-P experienced a decrease in the ability to start/maintain social relationships, 80% experienced poor work and school performance and 55% experienced social withdrawal.⁹⁴

Negative symptoms were more severe in children and adolescents at CHR-P with 22q11 deletion syndrome than without the syndrome ($P = 0.0081$).⁹⁵ From a neuroimaging perspective, larger left amygdala volumes were associated with negative symptoms in females ($P = 0.020$) but not in males.⁹⁶ Negative symptoms were associated with worse processing speed ($r = -0.31$, $P = 0.014$) and verbal performance ($r = -0.37$, $P = 0.03$)⁹⁷ as well as the total speed of timed activities ($P = 0.038$).⁹⁸ Moreover, different negative symptom dimensions were associated with difficulties in meta-cognition (i.e. cognition related to cognitive impairments) ($P < 0.001$).⁹⁹ However, no significant associations emerged between negative symptoms and neurocognitive measures in another study ($P > 0.05$).⁸⁸

Prognostic and therapeutic factors

Altogether, 20 (60.6%) studies focused on longitudinal prognostic or therapeutic factors. The key factors regarding changes in negative symptoms in children and adolescents at CHR-P and the factors that contribute to these changes are reported below following the same order as above (diagnostic categories and subgroups, clinical factors, functioning and quality of life, neurobiological findings and cognitive factors, therapeutic factors). Participants in clinical trials were not selected based on the presence of negative symptoms.

Males had more severe negative symptoms than females at 6-month and 12-month follow-up ($P < 0.05$).¹⁰⁰ Negative symptoms at baseline did not predict transition to psychosis ($P = 0.76$) in one study ($n = 71$, 1-year follow-up),¹⁰¹ whereas they did in another ($n = 153$, 7-year follow-up) ($AUC = 0.74$, $P < 0.01$).¹⁰² In fact, conversion was best predicted by negative symptoms compared with other clinical variables in children and adolescents at CHR-P ($P = 0.006$, $d = 0.46$),¹⁰³ and 100% of children and adolescents at CHR-P who transitioned to psychosis had negative symptoms in a further study.¹³ Additionally, positive remarks by family members were associated with decreased negative symptoms ($P < 0.05$).¹⁰⁴

In one RCT, omega-3 fatty acid treatment was associated with significantly lower negative symptom scores at 12 weeks ($P < 0.05$), 6 months ($P < 0.05$) and 12 months ($r = 0.52$, $P < 0.05$) compared with placebo.¹⁰⁵ More severe baseline negative symptoms were associated with treatment response in the omega-3 supplemented group compared with the placebo group ($d = 0.7$).¹⁰⁶ However, no significant differences in negative symptoms between the groups receiving CBT and risperidone, CBT and placebo, supportive therapy and placebo, and monitoring only were found in another study ($P > 0.05$).¹⁰⁷ Family-focused treatment was also not associated with an improvement in negative symptoms ($P > 0.05$). Children and adolescents at CHR-P who were on antipsychotics showed greater improvement in negative symptoms than those not on antipsychotics ($P = 0.03$) in a family-focused treatment trial.¹⁰⁸

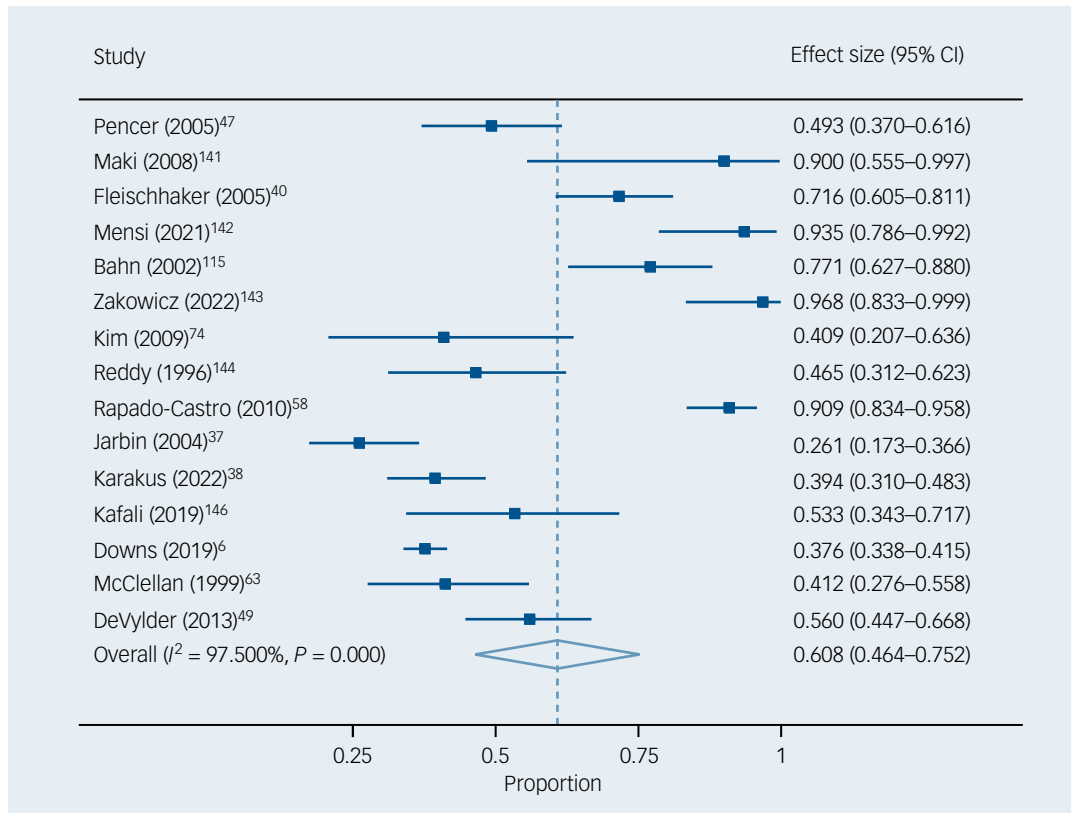


Fig. 2 Negative symptom prevalence in children and adolescents with early-onset psychosis.

Meta-analyses on the prevalence of negative symptoms

Twenty studies and 1799 individuals were included in the meta-analysis: 1457 children and adolescents with EOP (mean age 15.5 years (s.d. = 1.2), 52.1% males) and 342 children and adolescents at CHR-P (mean age 15.2 years (s.d. = 0.9), 52.6% males). Note that this is 15% of the included studies: the rest were not meta-analysed as they evaluated negative symptoms continuously (i.e. their severity) or were overlapping with these studies. Altogether, 66.0% (95% CI 53.6–78.5%) of the total sample had negative symptoms ($k = 20$ studies, $n = 1799$). Heterogeneity (I^2) across the included studies was statistically significant ($I^2 = 98.0\%$, $P < 0.001$). Publication bias was not detected in the funnel plot (Supplementary eFig. 1) or Egger's test ($P = 0.395$) (Supplementary eTable 9). Notably, no overlap was found in any of the studies included in the meta-analysis.

Of the children and adolescents with EOP, 60.8% (95% CI 46.4–75.2%) had negative symptoms ($k = 15$, $n = 1457$) (Fig. 2). Heterogeneity across the included studies was statistically significant ($I^2 = 97.5\%$, $P < 0.001$). Publication bias was not detected in the funnel plot (Supplementary eFig. 2) or Egger's test ($P = 0.578$) (Supplementary eTable 9). Of the children and adolescents at CHR-P, 79.6% (95% CI 66.3–92.9%) had negative symptoms ($k = 6$, $n = 342$) (Fig. 3). Heterogeneity across the included studies was statistically significant ($I^2 = 92.2\%$, $P < 0.001$). Publication bias was not detected in the funnel plot (Supplementary eFig. 3) or Egger's test ($P = 0.057$) (Supplementary eTable 9).

Sub-analyses and meta-regression analyses

In the sub-analyses, the decade of publication seemed to moderate the prevalence of negative symptoms ($Q = 10.427$, $P = 0.005$). Studies published in 2011–2022 detected negative symptoms in

70.3% (95% CI 56.6–81.1%) of children and adolescents with EOP or at CHR-P, whereas studies published in 2001–2020 detected negative symptoms in 66.0% (95% CI 43.2%–83.2%) and studies published in 1991–2000 detected negative symptoms in 43.6% (95% CI 34.0%–53.8%).

The continent of publication also moderated the prevalence of negative symptoms ($Q = 9.145$, $P = 0.027$). Studies published in Europe (72.6%, 95% CI 59.2–82.9%) and Asia (60.9%, 95% CI 24.9–88%) found a higher prevalence of negative symptoms than those published in North America (49.7%, 95% CI 41.6–57.8%) or Africa (46.5%, 95% CI 32.3–61.3%).

No differences were found between studies including some individuals ≥ 18 years compared with those studies including only individuals < 18 years ($Q = 0.026$, $P = 0.871$) or between cross-sectional studies and longitudinal studies ($Q = 0.020$, $P = 0.889$) (Table 1).

In the meta-regression analyses, neither publication year, percentage with schizophrenia, sample size, mean age, percentage of males, percentage on antipsychotics nor NOS scores were significantly associated with the prevalence of negative symptoms (all $P > 0.05$) (Table 2).

Discussion

To the best of our knowledge, this is the first systematic review to provide a comprehensive evaluation of the evidence regarding negative symptoms and diagnostic, prognostic and therapeutic factors in children and adolescents with EOP or at CHR-P. Additionally, this is the first quantitative meta-analysis on this topic. We systematically reviewed 133 studies evaluating 6776 children and adolescents with EOP and 2138 children and adolescents at CHR-P, and conducted the first meta-analysis on the prevalence of negative

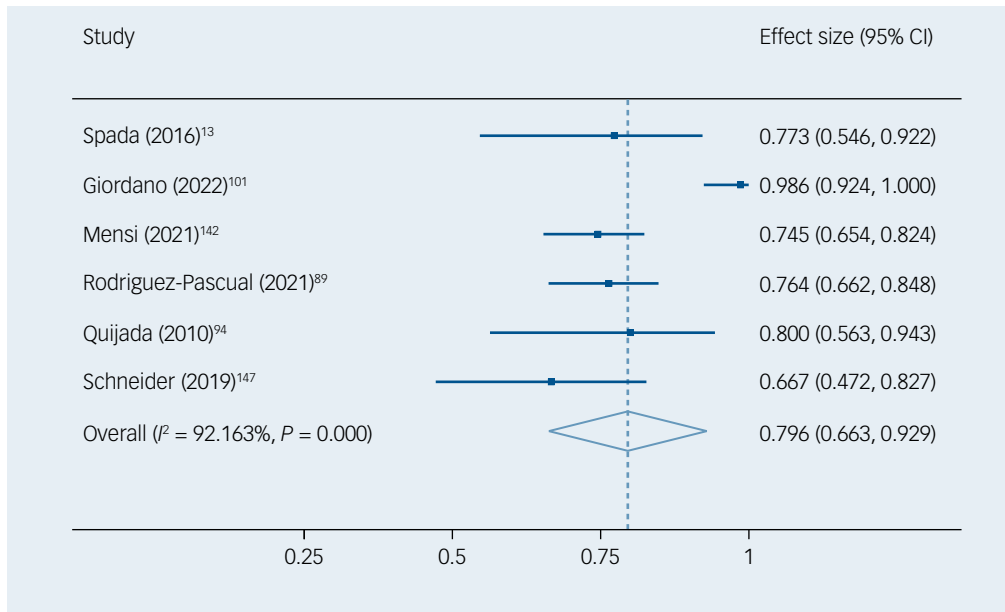


Fig. 3 Negative symptom prevalence in children and adolescents at clinical high-risk for psychosis.

symptoms in children and adolescents in 20 studies involving 1799 individuals (1457 with EOP and 342 at CHR-P) for those studies evaluating the presence/absence of negative symptoms and independent of whether they also reported on the dimensional severity of negative symptoms. The prevalence of negative symptoms in children and adolescents with EOP was 61% and the prevalence in those at CHR-P was 80%. In general, negative symptoms were associated with poorer clinical, functional, neurobiological, cognitive and intervention outcomes in both children and adolescents with EOP and children and adolescents at CHR-P, as detailed in the included studies and the systematic review above. Various interventions in heterogeneous populations have been piloted with variable results that require further study replication. Overall, these findings suggest that negative symptoms are frequent and clinically relevant both in children and adolescents with EOP and in those at CHR-P.

Negative symptoms in EOP

One of our main findings is that over 60% of children and adolescents with EOP experience negative symptoms when these are evaluated. Negative symptoms seem to appear in about 30–50% of individuals with an adult-onset first episode of psychosis.^{109,110} The prevalence observed was thus 20–100% higher in children and adolescents with EOP than in adults with a first episode of psychosis. There are different hypotheses or explanations for these results. On the one hand, it may be that this higher prevalence is due to other characteristics of children and adolescents with EOP, which may in turn be associated with poor prognosis. For instance, children and adolescents with EOP present with more neurodevelopmental difficulties,¹¹¹ poorer premorbid adjustment,⁷ more cognitive impairment and higher impulsivity¹¹² than individuals with adult-onset psychosis. Alternatively, it may be that the participants were particularly enriched in risk factors.¹¹³ Of note, individual studies found that children and adolescents with EOP showed negative symptoms more frequently, and that an earlier age at onset was associated with a higher number of (and more severe) negative symptoms.^{114,115} In any case, the assessment and management of negative symptoms in children and adolescents with EOP should be prioritised. Psychiatrists and other mental health professionals

should actively and comprehensively evaluate negative symptoms in young people. This includes child and adolescent mental health service clinicians treating children and adolescents with EOP who present to their clinic for the first time, and adult clinicians when these patients transition to their services. On a positive note, our sub-analyses suggest that in the past two decades the identification of negative symptoms has improved globally, at least in research studies. Nevertheless, a potential reason for health professionals not focusing on negative symptoms clinically may be rooted in the fact that high-level evidence for specific treatments for negative symptoms is lacking.¹¹⁶ In adults with schizophrenia, at least, antidepressants^{117,118} and aerobic exercise¹¹⁹ have been shown to improve negative symptoms, but no such trial data exist for children and adolescents with EOP.

Negative symptoms in CHR-P

Another particularly relevant finding is that negative symptoms appeared in almost 80% of children and adolescents at CHR-P and that this prevalence was higher than for children and adolescents with EOP; importantly, these findings held true at a meta-analytical level. It seems that negative symptoms are observed in the context of emerging attenuated positive symptoms during the prodromal period before the first episode of psychosis. Previous evidence suggests that negative symptoms may be the most common first symptoms of schizophrenia,³ potentially appearing 1 year before the emergence of attenuated positive symptoms.¹²⁰ This sequence of events has led some researchers to suggest that individuals with negative symptoms should be included as a new clinical risk group for developing psychosis.^{13,121} However, one prospective cohort study found that the conversion to psychosis in the group with negative symptoms only was about 5% at 5 years,¹²¹ indicating that negative symptoms alone have limited positive predictive validity. The implication is that screening instruments¹²² and CHR-P services¹²³ should continue identifying ‘high risk’ individuals on the basis of attenuated positive clinical symptoms.¹²² To note, clinical services to prevent psychosis do typically focus on (attenuated) positive symptoms¹²³ in their initial assessment to identify children and adolescents at CHR-P. An alternative explanation for the higher prevalence of negative symptoms in CHR-P could simply be that the

Table 1 Subgroup analyses

Group, subgroup	Studies, <i>k</i>	Participants, <i>n</i>	Meta-analysis				Heterogeneity		Within subgroup heterogeneity	
			Proportion	95% CI	<i>z</i> -score	<i>P</i>	<i>I</i> ²	<i>P</i>	<i>Q</i>	<i>P</i>
Decade	20	1799	0.660	0.536 to 0.785	2.969	0.003	98.000	<0.001	10.427	0.005
1991–2000	2	94	0.436	0.340 to 0.538	−1.229	0.219	0.0	0.604		
2001–2010	7	389	0.660	0.432 to 0.832	1.384	0.166	92.588	<0.001		
2011–2022	11	1316	0.703	0.566 to 0.811	2.837	0.005	92.312	<0.001		
Continent	20	1799	0.660	0.536 to 0.785	2.969	0.003	98.000	<0.001	9.145	0.027
Europe	14	1482	0.726	0.592 to 0.829	3.165	0.002	94.376	<0.001		
Asia	2	70	0.609	0.249 to 0.880	0.563	0.573	87.755	0.004		
North America	3	204	0.497	0.416 to 0.578	−0.073	0.942	27.919	0.250		
Africa	1	43	0.465	−0.323 to 0.613	−0.457	0.648	0.000	1.000		
Design	18	1677	0.655	0.564 to 0.736	3.268	0.001	92.312	<0.001	0.026	0.871
Age range 0–18 years	13	1480	0.662	0.537 to 0.768	2.506	0.012	93.775	<0.001		
Age range includes >18-year-olds	5	197	0.647	0.510 to 0.765	2.104	0.035	68.837	0.012		
Design	20	1799	0.660	0.536 to 0.785	2.969	0.003	98.000	<0.001	0.020	0.889
Cross-sectional	6	314	0.651	0.528 to 0.757	2.384	0.017	93.563	0.001		
Longitudinal	14	1485	0.663	0.531 to 0.774	2.406	0.016	75.713	<0.001		

Table 2 Meta-regression analyses

Variable	Studies, <i>k</i>	β coefficient	s.e.	95% CI	<i>z</i> -score	<i>P</i>
Year of publication	20	0.0511	0.0291	−0.0059 to 0.1082	1.76	0.0791
Percentage of patients with schizophrenia	11	0.0004	0.0109	−0.0210 to 0.0217	0.03	0.9737
Sample size	20	−0.0022	0.0016	−0.0053 to 0.0009	−1.41	0.1572
Mean age	17	−0.1314	0.2488	−0.6190 to 0.3562	−0.53	0.5974
Percentage of males	18	0.0187	0.0219	−0.0242 to 0.0616	0.85	0.3934
Percentage on antipsychotics	7	−0.0021	0.0080	−0.0177 to 0.0136	−0.26	0.7966
Quality of the study	20	−0.0915	0.1386	−0.3631 to 0.1801	−0.66	0.5092

instruments used to detect negative symptoms in children and adolescents are more sensitive. To note, negative symptoms were found to be less severe in children and adolescents with EOP than in those at CHR-P fulfilling DSM-5 criteria for attenuated psychosis syndrome ($P < 0.001$).¹²⁴ However, the power of our analysis was lower for children and adolescents at CHR-P than for those with EOP, with just six independent studies fulfilling our CHR-P inclusion criteria.

Diagnostic or detection factors

From a diagnostic perspective, we have extensively reviewed clinico-epidemiological, neurobiological and neurocognitive risk factors that increase the likelihood of experiencing negative symptoms or their severity. In our meta-regression analysis, sample prevalence of schizophrenia was not associated with an increased prevalence of negative symptoms. Individual studies did find a greater severity of negative symptoms in the schizophrenia subgroup.¹²⁵ This finding suggests that negative symptoms do not only appear in schizophrenia and should be evaluated and monitored in children and adolescents in the early stages of psychosis regardless of their diagnosis or presentation. That said, there may be some individuals in whom the therapeutic intensity of pharmacological interventions, particularly antipsychotic treatment, could be minimised and psychosocial interventions could be offered instead. For instance, young people with brief psychotic disorders seem to present less severe negative symptoms, not only compared with schizophrenia ($P = 0.006$)¹²⁶ but also compared with psychosis 'not otherwise specified' ($P = 0.02$).¹²⁷ This finding is in line with previous suggestions of offering psychosocial interventions without antipsychotic medication to individuals with brief psychotic episodes¹²⁸ or with a shorter duration of untreated psychosis,¹²⁹ which is in turn associated with less severe negative symptoms.¹³⁰

Risk factors may also have an effect on the presentation of negative symptoms. For instance, children and adolescents with EOP and obesity seemed to present with less severe negative symptoms ($P = 0.003$).¹³¹ It is therefore important to advance knowledge on the implementation of precision psychiatry to be able to offer state-of-the-art interventions that are personalised and needs-based.¹³² To do that, it is vital to provide mental health professionals with adequate competence and skills training to identify and manage relevant psychopathological and functional disabilities, including those related to negative symptoms.¹³³ Notably, the detection of negative symptoms seems to be improving in recent decades, the prevalence of negative symptoms having increased from 44% in 1991–2000 to 70.3% in 2011–2022, suggesting that some of these competencies and skills have been achieved by professionals. One of the challenges in this field, regarding the acquisition of some of these competencies, is the distinction between depressive symptoms and negative symptoms, since there is a correlation between depressive symptoms and negative symptoms and since there may be some overlap, including in individuals with non-affective psychosis.^{18,86,89,90} A systematic review identified that depressed mood, hopelessness and suicidality had greater specificity for depression in people with schizophrenia, whereas avolition, affective blunting and social withdrawal were more characteristic of negative symptoms.¹³⁴ These distinctions are not always easy for clinicians to make, but as a recent network analysis in adults with schizophrenia and predominant negative symptoms showed, negative symptoms appear to be an independent symptom cluster that can be delineated from depressive symptoms in the network.¹³⁵ Psychometric instruments or digital tools that clearly differentiate these symptoms are required since the presence and severity of negative symptoms may overlap or covary with the severity of other symptoms (e.g. with depressive symptoms but also with positive symptoms or anxiety symptoms) and with functional impairment. Training in

the use of these instruments is therefore also important. Finally, the development of a core outcome set for observational and clinical studies in EOP and CHR-P individuals (as per the Core Outcome Measures in Effectiveness Trials: www.comet-initiative.org) that does not rely only on behaviour could reduce heterogeneity and measurement variation and improve the accuracy of the detection of negative symptoms.

Prognostic factors

From a prognostic perspective, this review provided valuable information on diagnostic stability, course and outcomes as well as on the factors that are associated with increased negative symptoms during longitudinal follow-up. Overall, negative symptoms were characterised by consistency and stability.^{57,58} Interestingly, meta-analytical evidence showed that negative symptoms improved at 12-month follow-up ($g = 0.496$) but not at 24 months or ≥ 36 months compared with baseline ($P > 0.05$) in CHR-P individuals.¹³⁶ This result suggests that negative symptoms need to be monitored during the follow-up period, even if they initially improve. Some children and adolescents with EOP or at CHR-P present with clinical risk factors for poor outcomes (e.g. prominent negative symptoms at baseline⁶¹ or long duration of untreated psychosis)³⁸ or neurobiological risk factors for poor outcomes (e.g. frontal cortical thinness, changes in the cerebrospinal fluid)⁶⁴. They may require additional clinical attention since their negative symptoms may deteriorate.

Therapeutic factors

Finally, from a therapeutic perspective, we conclude that research on preventive treatments for children and adolescents with EOP or at CHR-P has limited evidence compared with research in adults.¹³⁷ In the reviewed studies in children and adolescents with EOP, clozapine was the only medication that showed in RCTs superiority against other antipsychotic medications.^{68,69} However, since meta-analytical evidence shows that clozapine is associated with significant cardiometabolic, cardiac, haematological and neurological adverse effects in children and adolescents,^{138,139} clozapine needs to be reserved for treatment-resistant cases in which they have been researched (e.g. after two previous antipsychotics have failed). Other medications, such as aripiprazole, for which a study found a better response in children and adolescents with EOP with negative symptoms than with positive symptoms,⁷⁴ may be prescribed first. Other second-generation antipsychotics (e.g. lurasidone⁷¹ and quetiapine^{72,73}) have shown some benefits, but the comparisons do not clearly benefit any of them (apart from clozapine) over the others. The study of other medication groups is recommended, particularly antidepressants, which have shown to be overall effective – although with small effect size – for negative symptoms in adults.^{117,118} There is also insufficient evidence to recommend any specific psychosocial intervention in children and adolescents with EOP or at CHR-P over the others. Of note, early intervention services (typically offered to adolescents and young adults with EOP or at CHR-P) have shown a reduction in negative symptom severity after 6–24 months¹⁴⁰ compared with treatment as usual, supporting the need for funding and use of early intervention services. To advance knowledge in the field, future research should evaluate changes in negative symptoms as their primary outcome, recruiting and selecting children and adolescents in whom negative symptoms are predominant.




Limitations and strengths


This study has several limitations that must be taken into consideration when interpreting our results. First, the sample sizes and the

number of articles were limited for some of the evaluated outcomes. Importantly, only 20 independent samples provided independently meta-analysable data on the presence of negative symptoms, because most studies only reported negative symptoms as a continuous outcome. Second, participants included in the studies were heterogeneous and not selected on the basis of the presence of negative symptoms; the studies were also heterogeneous in their design, methodology and quality, which was low in some of the included studies. Third, the threshold used to consider that negative symptoms were present varied, and some studies did not specify how they measured or defined the presence of negative symptoms. Also, currently used instruments typically rely on behaviour that may have been reported and not always observed, whereas subjective experiences may be insufficiently assessed. Fourth, the mean age of participants in the included studies ranged from 10–17.9 years, which was highly variable. Differences in terms of neurodevelopment and subsequent expression of negative symptoms could exist. We have mitigated against this problem with our sensitivity analyses, but some of these analyses may have been underpowered. Finally, and relatedly, as anticipated in our protocol, the amount of evidence was limited for some outcomes and did not allow us to carry out additional meta-analyses of longitudinal data.

This study also has several strengths. Among them is the fact that this is the ‘first in field’ and most comprehensive systematic review with meta-analytical evidence to date focusing on the prevalence of negative symptoms in children and adolescents with EOP and at CHR-P. Our database for the systematic review was large and globally representative, including 133 individual studies. We used rigorous methods and carefully reported study quality, while providing sensitivity analyses, heterogeneity analyses and publication bias assessments. This approach has allowed us to provide state-of-the-art evidence on the current state in the field but also on the challenges and gaps that future studies should address.

In summary, our findings suggest that negative symptoms are at least as common in children and adolescents with EOP as in adult-onset psychosis, that they appear frequently during the prodromal period in children and adolescents at CHR-P and that they are associated with poor clinical, functional and intervention outcomes in both groups. They highlight the need for further interventional research, so that children and adolescents can receive evidence-based treatments for negative symptoms aimed at improving outcomes.

Gonzalo Salazar de Pablo , MD, PhD, Department of Child and Adolescent Psychiatry, Institute of Psychiatry, Psychology & Neuroscience, King's College London, London, UK; Early Psychosis: Interventions and Clinical Detection (EPIC) Lab, Department of Psychosis Studies, Institute of Psychiatry, Psychology & Neuroscience, King's College London, London, UK; Child and Adolescent Mental Health Services, South London and Maudsley NHS Foundation Trust, London, UK; and Department of Child and Adolescent Psychiatry, Institute of Psychiatry and Mental Health, Hospital General Universitario Gregorio Marañón School of Medicine, Universidad Complutense, IISGM, CIBERSAM, Madrid, Spain; **Ana Catalan** , MD, PhD, Early Psychosis: Interventions and Clinical Detection (EPIC) Lab, Department of Psychosis Studies, Institute of Psychiatry, Psychology & Neuroscience, King's College London, London, UK; and Mental Health Department, Biocruces Bizkaia Health Research Institute, Basurto University Hospital, Facultad de Medicina y Odontología, Campus de Leioa, University of the Basque Country, UPV/EHU, Vizcaya, Spain; **Julio Vaquerizo Serrano**, MD, Department of Child and Adolescent Psychiatry, Institute of Psychiatry, Psychology & Neuroscience, King's College London, London, UK; **Borja Pedruzo**, MD, Department of Psychiatry, Basurto University Hospital, Bilbao, Spain; **Luis Alameda**, MD, PhD, Department of Psychosis Studies, Institute of Psychiatry, Psychology and Neuroscience, King's College London, London, UK; Service of General Psychiatry, Treatment and Early Intervention in Psychosis Program, University Hospital (CHUV), Lausanne, Switzerland; and Centro Investigación Biomedica en Red de Salud Mental (CIBERSAM), Instituto de Biomedicina de Sevilla (IBIS), Hospital Universitario Virgen del Rocío, Departamento de Psiquiatría, Universidad de Sevilla, Sevilla, Spain; **Veronica Sandroni**, MD, Department of Psychiatry, Faculty of Medicine, Université Paris Cité, Paris, France; and Department of Psychiatry, Groupe Hospitalier Paul Guiraud, Villejuif, France; **Alvaro Armendariz**, MD, Department of Psychiatry and Psychology, Hospital Sant Joan de Déu de Barcelona, L'Hospitalet de Llobregat, Barcelona, Spain; **Victoria Rodriguez** , MD, PhD, Department of Psychosis Studies, Institute of Psychiatry, Psychology and Neuroscience, King's College London, London, UK; **Celso Arango**, MD, PhD, Department of Child and Adolescent Psychiatry, Institute of Psychiatry and Mental Health, Hospital General Universitario Gregorio Marañón School of Medicine, Universidad Complutense, IISGM, CIBERSAM, Madrid,

Spain; **Carmen Moreno**, MD, PhD, Department of Child and Adolescent Psychiatry, Institute of Psychiatry and Mental Health, Hospital General Universitario Gregorio Marañón School of Medicine, Universidad Complutense, IISGM, CIBERSAM, Madrid, Spain; **Johnny Downs**, MD, PhD, Department of Child and Adolescent Psychiatry, Institute of Psychiatry, Psychology & Neuroscience, King's College London, London, UK; **Chris Abbott**, MD, Child and Adolescent Mental Health Services, South London and Maudsley NHS Foundation Trust, London, UK; **Jae Il Shin** , MD, PhD, Department of Paediatrics, Yonsei University College of Medicine, Seoul, Republic of Korea; **Marco Solmi**, MD, PhD, Early Psychosis: Interventions and Clinical Detection (EPIC) Lab, Department of Psychosis Studies, Institute of Psychiatry, Psychology & Neuroscience, King's College London, London, UK; Department of Psychiatry, University of Ottawa, Ottawa, Ontario, Canada; Department of Mental Health, The Ottawa Hospital, Ottawa, Ontario, Canada; and Department of Child and Adolescent Psychiatry, Charité Universitätsmedizin, Berlin, Germany; **Paolo Fusar-Poli**, MD, PhD, Early Psychosis: Interventions and Clinical Detection (EPIC) Lab, Department of Psychosis Studies, Institute of Psychiatry, Psychology & Neuroscience, King's College London, London, UK; Department of Brain and Behavioral Sciences, University of Pavia, Pavia, Italy; OASIS service, South London and Maudsley NHS Foundation Trust, London, UK; and National Institute for Health Research, Maudsley Biomedical Research Centre, South London and Maudsley NHS Foundation Trust, London, UK; **Christoph U. Correll**, MD, Department of Child and Adolescent Psychiatry, Charité Universitätsmedizin, Berlin, Germany; Department of Psychiatry, Northwell Health, The Zucker Hillside Hospital, Glen Oaks, New York, USA; Department of Psychiatry and Molecular Medicine, Zucker School of Medicine at Hofstra/ Northwell, Hempstead, New York, USA; and Center for Psychiatric Neuroscience, The Feinstein Institutes for Medical Research, Manhasset, New York, USA

Correspondence: Gonzalo Salazar de Pablo. Email: gonzalo.salazar_de_pablo@kcl.ac.uk

First received 2 Oct 2022, final revision 22 Nov 2022, accepted 10 Dec 2022

Supplementary material

Supplementary material is available at <https://doi.org/10.1192/bjp.2022.203>.

Data availability

This paper reports meta-analytic data based on original published studies. The corresponding author, G.S.P., may be contacted for further information.

Author contributions

Study concept and design: G.S.P., C.C.; data selection and data collection: G.S.P., A.C., J.V.S., B.P., V.S., A.A., V.R.; data analysis: G.S.P.; drafting of the manuscript: G.S.P.; critical revision of the manuscript for important intellectual content: all the authors. G.S.P. had full access to all the data in the study and takes responsibility for the integrity of the data and the accuracy of the data analysis.

Funding

This research received no specific grant from any funding agency, commercial or not-for-profit sectors.

Declaration of interest

G.S.P. has received personal fees from Janssen Cilag and Menarini. A.C. has received personal fees from Janssen and is supported by the Instituto de Salud Carlos III, Spanish Ministry of Economy and Competitiveness. C.A. has been a consultant to or has received honoraria or grants from Acadia, Angelini, Boehringer, Gedeon Richter, Janssen Cilag, Lundbeck, Minerva, Otsuka, Pfizer, Roche, Sage, Servier, Shire, Schering Plough, Sumitomo Dainippon Pharma, Sunovion and Takeda. C.M. has received honoraria as a consultant and/or advisor and/or for lectures from Angelini, Esteve, Exeltis Janssen, Lundbeck, Neuraxpharm, Nuvelution, Otsuka, Pfizer, Servier and Sunovion outside the submitted work. P.F.P. has received research or personal fees from Lundbeck, Angelini, Menarini and Boehringer Ingelheim. C.A. and C.M. are supported by the Spanish Ministry of Science, Innovation, and Universities, Instituto de Salud Carlos III, European Regional Development Fund 'A way of making Europe', Centro de Investigación Biomédica en Red Salud Mental, Madrid Regional Government; and Fundación Mutua Madrileña. J.D. is supported by NIHR Clinician Science Fellowship award and has received support from a Medical Research Council Clinical Research Training Fellowship and Psychiatry Research Trust Peggy Pollak Research Fellowship in Developmental Psychiatry. C.U.C. has been a consultant and/or advisor to or has received honoraria from AbbVie, Acadia, Alkermes, Allergan, Angelini, Aristo, Boehringer-Ingelheim, Cardio Diagnostics, Cerevel, CNX Therapeutics, Compass Pathways, Darnitsa, Gedeon Richter, Hikma, Holmus, IntraCellular Therapies, Janssen/J&J, Karuna, LB Pharma, Lundbeck, MedAvante-ProPhase, MedinCell, Merck, Mindpax, Mitsubishi Tanabe Pharma, Mylan, Neurocrine, Newron, Noven, Otsuka, Pharmabrain, PPD Biotech, Recordati, Relmada, Reviva, Rovi, Seqirus, SK Life Science, Sunovion, Sun Pharma, Supernus, Takeda, Teva, and Viatrix; he provided expert testimony for Janssen and Otsuka; he served on a Data Safety Monitoring Board for Lundbeck, Relmada, Reviva, Rovi, Supernus, and Teva; he has received grant support from Janssen and Takeda and royalties from UpToDate and is a stock option holder of Cardio Diagnostics, Mindpax, LB Pharma and Quantic.

References

- Salazar de Pablo G, Moreno D, Gonzalez-Pinto A, Paya B, Castro-Fonieles J, Baeza I, et al. Affective symptom dimensions in early-onset psychosis over time: a principal component factor analysis of the Young Mania Rating Scale and the Hamilton Depression Rating Scale. *Eur Child Adolesc Psychiatry* 2022; **31**: 1715–28.
- Bonnot O, Dumas N. Troubles schizophréniques de l'adolescence [Schizophrenic disorders in adolescence]. *La Revue du Praticien* 2014; **64**: 499–504.
- Correll CU, Schooler NR. Negative symptoms in schizophrenia: a review and clinical guide for recognition, assessment, and treatment. *Neuropsychiatr Dis Treat* 2020; **16**: 519–34.
- Immonen J, Jääskeläinen E, Korpela H, Miettunen J. Age at onset and the outcomes of schizophrenia: a systematic review and meta-analysis. *Early Interv Psychiatry* 2017; **11**: 453–60.
- Arango C, Buitelaar JK, Correll CU, Díaz-Caneja CM, Figueira ML, Fleischhacker WW, et al. The transition from adolescence to adulthood in patients with schizophrenia: challenges, opportunities and recommendations. *Eur Neuropsychopharmacol* 2022; **59**: 45–55.
- Downs J, Dean H, Lechler S, Sears N, Patel R, Shetty H, et al. Negative symptoms in early-onset psychosis and their association with antipsychotic treatment failure. *Schizophr Bull* 2019; **45**: 69–79.
- Díaz-Caneja CM, Pina-Camacho L, Rodríguez-Quiroga A, Fraguas D, Parellada M, Arango C. Predictors of outcome in early-onset psychosis: a systematic review. *NPJ Schizophr* 2015; **1**: 14005.
- De Berardis D, De Filippis S, Masi G, Vicari S, Zuddas A. A neurodevelopment approach for a transitional model of early onset schizophrenia. *Brain Sci* 2021; **11**(2): 275.
- Clemmensen L, Vernal DL, Steinhausen HC. A systematic review of the long-term outcome of early onset schizophrenia. *BMC Psychiatry* 2012; **12**: 150.
- Fusar-Poli P, Salazar de Pablo G, Correll CU, Meyer-Lindenberg A, Millan MJ, Borgwardt S, et al. Prevention of psychosis: advances in detection, prognosis, and intervention. *JAMA Psychiatry* 2020; **77**: 755–65.
- Catalan A, Salazar de Pablo G, Vaquerizo Serrano J, Mosillo P, Baldwin H, Fernández-Rivas A, et al. Annual research review: prevention of psychosis in adolescents - systematic review and meta-analysis of advances in detection, prognosis and intervention. *J Child Psychol Psychiatry* 2020; **62**: 657–73.
- Armando M, Klauser P, Anagnostopoulos D, Hebebrand J, Moreno C, Revet A, et al. Clinical high risk for psychosis model in children and adolescents: a joint position statement of ESCAP clinical division and research academy. *Eur Child Adolesc Psychiatry* 2020; **29**: 413–6.
- Spada G, Molteni S, Pistone C, Chiappedi M, McGuire P, Fusar-Poli P, et al. Identifying children and adolescents at ultra high risk of psychosis in Italian neuropsychiatry services: a feasibility study. *Eur Child Adolesc Psychiatry* 2016; **25**: 91–106.
- Schlosser DA, Jacobson S, Chen Q, Sugar CA, Niendam TA, Li G, et al. Recovery from an at-risk state: clinical and functional outcomes of putatively prodromal youth who do not develop psychosis. *Schizophr Bull* 2012; **38**: 1225–33.
- Devos DJ, Braun A, Seredynski T, Addington J. Negative symptoms and functioning in youth at risk of psychosis: a systematic review and meta-analysis. *Harv Rev Psychiatry* 2020; **28**: 341–55.
- Sabe M, Zhao N, Kaiser S. Cannabis, nicotine and the negative symptoms of schizophrenia: systematic review and meta-analysis of observational studies. *Neurosci Biobehav Rev* 2020; **116**: 415–25.
- Boonstra N, Klaassen R, Sytema S, Marshall M, De Haan L, Wunderink L, et al. Duration of untreated psychosis and negative symptoms—a systematic review and meta-analysis of individual patient data. *Schizophr Res* 2012; **142**: 12–9.
- Edwards CJ, Garety P, Hardy A. The relationship between depressive symptoms and negative symptoms in people with non-affective psychosis: a meta-analysis. *Psychol Med* 2019; **49**: 2486–98.
- Harvey RC, James AC, Shields GE. A systematic review and network meta-analysis to assess the relative efficacy of antipsychotics for the treatment of positive and negative symptoms in early-onset schizophrenia. *CNS Drugs* 2016; **30**: 27–39.
- Correll CU, Cortese S, Croatto G, Monaco F, Krinitski D, Arrondo G, et al. Efficacy and acceptability of pharmacological, psychosocial, and brain stimulation interventions in children and adolescents with mental disorders: an umbrella review. *World Psychiatry* 2021; **20**: 244–75.
- Pagsberg AK, Tarp S, Glinthorp D, Stenström AD, Fink-Jensen A, Correll CU, et al. Acute antipsychotic treatment of children and adolescents with schizophrenia-spectrum disorders: a systematic review and network meta-analysis. *J Am Acad Child Adolesc Psychiatry* 2017; **56**: 191–202.
- Krause M, Zhu Y, Huhn M, Schneider-Thoma J, Bighelli I, Chaimani A, et al. Efficacy, acceptability, and tolerability of antipsychotics in children and

- adolescents with schizophrenia: a network meta-analysis. *Eur Neuropsychopharmacol* 2018; **28**: 659–74.
- 23 Raballo A, Poletti M, Preti A, McGorry P. Clinical high risk for psychosis in children and adolescents: a meta-analysis of transition prevalences. *Schizophr Res* 2022; **243**: 254–61.
 - 24 Moher D, Liberati A, Tetzlaff J, Altman DG, Group P. Preferred reporting items for systematic reviews and meta-analyses: the PRISMA statement. *J Clin Epidemiol* 2009; **62**: 1006–12.
 - 25 Stroup DF, Berlin JA, Morton SC, Olkin I, Williamson GD, Rennie D, et al. Meta-analysis of observational studies in epidemiology: a proposal for reporting. Meta-analysis of Observational Studies in Epidemiology (MOOSE) group. *JAMA* 2000; **283**: 2008–12.
 - 26 Altman DG, Simeri I, Hoey J, Moher D, Schulz K. EQUATOR: reporting guidelines for health research. *Lancet* 2008; **371**: 1149–50.
 - 27 Hunter KE, Webster AC, Page MJ, Willson M, McDonald S, Berber S, et al. Searching clinical trials registers: guide for systematic reviewers. *BMJ* 2022; **377**: e068791.
 - 28 Salazar de Pablo G, Catalan A, Fusar-Poli P. Clinical validity of DSM-5 attenuated psychosis syndrome: advances in diagnosis, prognosis, and treatment. *JAMA Psychiatry* 2020; **77**: 311–20.
 - 29 Salazar de Pablo G, Radau J, Pereira J, Bonoldi I, Arienti V, Besana F, et al. Probability of transition to psychosis in individuals at clinical high risk: an updated meta-analysis. *JAMA Psychiatry* 2021; **78**: 970–8.
 - 30 Nyaga V, Arbyn M, Aerts M. Metaprop: a Stata command to perform meta-analysis of binomial data. *Arch Public Health* 2014; **72**: 39.
 - 31 Calderon-Medavilla M, Vila-Badia R, Dolz M, Butjosa A, Barajas A, Del Cacho N, et al. Depressive symptoms and their relationship with negative and other psychotic symptoms in early onset psychosis. *Eur Child Adolesc Psychiatry* 2021; **30**: 1383–90.
 - 32 Hollis C. Developmental precursors of child- and adolescent-onset schizophrenia and affective psychoses: diagnostic specificity and continuity with symptom dimensions. *Br J Psychiatry* 2003; **182**: 37–44.
 - 33 Nechmad A, Ratzoni G, Poyurovsky M, Meged S, Avidan G, Fuchs C, et al. Obsessive-compulsive disorder in adolescent schizophrenia patients. *Am J Psychiatry* 2003; **160**: 1002–4.
 - 34 Poyurovsky M, Faragian S, Shabeta A, Kosov A. Comparison of clinical characteristics, co-morbidity and pharmacotherapy in adolescent schizophrenia patients with and without obsessive-compulsive disorder. *Psychiatry Res* 2008; **159**: 133–9.
 - 35 Hadjez J, Stein D, Gabbay U, Bruckner J, Meged S, Barak Y, et al. Dream content of schizophrenic, nonschizophrenic mentally ill, and community control adolescents. *Adolescence* 2003; **38**: 331–42.
 - 36 Vines L, Bridgwater M, Bachman P, Hayes R, Catalano S, Jalbrzikowski M. Elevated emotion reactivity and emotion regulation in individuals at clinical high risk for developing psychosis and those diagnosed with a psychotic disorder. *Early Interv Psychiatry* 2022; **16**: 724–35.
 - 37 Jarbin H, von Knorring AL. Suicide and suicide attempts in adolescent-onset psychotic disorders. *Nord J Psychiatry* 2004; **58**: 115–23.
 - 38 Karakuş OB, Ermiş Ç, Tunçtürk M, Yüksel AS, Alarslan S, Sağlam Y, et al. Identifying clinical and psychological correlates of persistent negative symptoms in early-onset psychotic disorders. *Clin Child Psychol Psychiatry* 2022; **27**: 1288–302.
 - 39 Ramanathan S, Miewald J, Montrose D, Keshavan MS. Can age at sexual maturity act as a predictive biomarker for prodromal negative symptoms? *Schizophr Res* 2015; **164**: 35–9.
 - 40 Fleischhaker C, Schulz E, Tepper K, Martin M, Hennighausen K, Remschmidt H. Long-term course of adolescent schizophrenia. *Schizophr Bull* 2005; **31**: 769–80.
 - 41 Paruk S, Jhazbhay K, Singh K, Sartorius B, Burns JK. The clinical impact of a positive family history of psychosis or mental illness in psychotic and non-psychotic mentally ill adolescents. *J Child Adolesc Ment Health* 2017; **29**: 219–29.
 - 42 Hintze B, Borkowska A. Associations between cognitive function, schizophrenic symptoms, and functional outcome in early-onset schizophrenia with and without a familial burden of psychosis. *Isr J Psychiatry Relat Sci* 2015; **52**: 6–13.
 - 43 Meng H, Schimmelmann BG, Mohler B, Lambert M, Branik E, Koch E, et al. Pretreatment social functioning predicts 1-year outcome in early onset psychosis. *Acta Psychiatr Scand* 2006; **114**: 249–56.
 - 44 Burton CZ, Tso IF, Carrion RE, Niendam T, Adelsheim S, Auther AM, et al. Baseline psychopathology and relationship to longitudinal functional outcome in attenuated and early first episode psychosis. *Schizophr Res* 2019; **212**: 157–62.
 - 45 Puig O, Penades R, Baeza I, Sánchez-Gistau V, De la Serna E, et al. Processing speed and executive functions predict real-world everyday living skills in adolescents with early-onset schizophrenia. *Eur Child Adolesc Psychiatry* 2012; **21**: 315–26.
 - 46 McClellan J, Breiger D, McCurry C, Hlastala SA. Premorbid functioning in early-onset psychotic disorders. *J Am Acad Child Adolesc Psychiatry* 2003; **42**: 666–72.
 - 47 Pencer A, Addington J, Addington D. Outcome of a first episode of psychosis in adolescence: a 2-year follow-up. *Psychiatry Res* 2005; **133**: 35–43.
 - 48 Schwartz-Stav O, Apter A, Zalsman G. Depression, suicidal behavior and insight in adolescents with schizophrenia. *Eur Child Adolesc Psychiatry* 2006; **15**: 352–9.
 - 49 DeVlyder JE, Gearing RE. Declining social support in adolescents prior to first episode psychosis: associations with negative and affective symptoms. *Psychiatry Res* 2013; **210**: 50–4.
 - 50 Corcoran C, Whitaker A, Coleman E, Fried J, Feldman J, Goudsmit N, et al. Olfactory deficits, cognition and negative symptoms in early onset psychosis. *Schizophr Res* 2005; **80**: 283–93.
 - 51 McClellan J, McCurry C, Speltz ML, Jones K. Symptom factors in early-onset psychotic disorders. *J Am Acad Child Adolesc Psychiatry* 2002; **41**: 791–8.
 - 52 Pandina G, Nuamah I, Petersen T, Singh J, Savitz A, Hough D. Cognitive functioning in adolescents with schizophrenia treated with paliperidone extended-release: 6-Month exploratory analysis from an open-label, single-arm safety study. *Schizophr Res Cogn* 2020; **20**: 100173.
 - 53 Cohen E, Sereni N, Kaplan O, Weizman A, Kikinzon L, Weiner I, et al. The relation between latent inhibition and symptom-types in young schizophrenics. *Behav Brain Res* 2004; **149**: 113–22.
 - 54 Mørch-Johnsen L, Smelror RE, Andreou D, Barth C, Johannessen C, Wedervang-Resell K, et al. Negative symptom domains are associated with verbal learning in adolescents with early onset psychosis. *Front Psychiatry* 2022; **12**: 825681.
 - 55 Thaden E, Rhinewine JP, Lencz T, Kester H, Cervellione KL, Henderson I, et al. Early-onset schizophrenia is associated with impaired adolescent development of attentional capacity using the identical pairs continuous performance test. *Schizophr Res* 2006; **81**: 157–66.
 - 56 Perez-Garza R, Victoria-Figueroa G, Elena Ulloa-Flores R. Sex differences in severity, social functioning, adherence to treatment, and cognition of adolescents with schizophrenia. *Schizophr Res Treat* 2016; **2016**: 1928747.
 - 57 Garcia Traverso M, Fraguas D, Arango C, Castro-Fornieles J, González-Pinto A, Parellada M, et al. Longitudinal assessment of negative symptoms in early onset first episode psychosis. *Eur Neuropsychopharmacol* 2019; **29**: S429–30.
 - 58 Rapado-Castro M, Soutullo C, Fraguas D, Arango C, Payá B, Castro-Fornieles J, et al. Predominance of symptoms over time in early-onset psychosis: a principal component factor analysis of the Positive and Negative Syndrome Scale. *J Clin Psychiatry* 2010; **71**: 327–37.
 - 59 Bunk D, Eggers C, Klapal M. Symptom dimensions in the course of childhood-onset schizophrenia. *Eur Child Adolesc Psychiatry* 1999; **8**(suppl 1): i29–35.
 - 60 Paillere-Martinot ML, Aubin F, Martinot JL, Colin B. A prognostic study of clinical dimensions in adolescent-onset psychoses. *Schizophr Bull* 2000; **26**: 789–99.
 - 61 Parellada M, Castro-Fornieles J, Gonzalez-Pinto A, Pina-Camacho L, Moreno D, Rapado-Castro M, et al. Predictors of functional and clinical outcome in early-onset first-episode psychosis: the Child and Adolescent First Episode of Psychosis (CAFEPs) study. *J Clin Psychiatry* 2015; **76**(11): e1441–8.
 - 62 Merchan-Naranjo J, Fraguas D, De Castro MJ, Parellada M, Moreno D, Ruiz-Sancho A, et al. Negative symptoms predict functional outcome of early-onset psychosis. *Eur Psychiatry* 2007; **22**: S125.
 - 63 McClellan J, McCurry C, Snell J, DuBose A. Early-onset psychotic disorders: course and outcome over a 2-year period. *J Am Acad Child Adolesc Psychiatry* 1999; **38**: 1380–8.
 - 64 Garcia-Amador M, Joost J, Reig S, Paradella M, Moreno D, Moreno C, et al. Frontal cortical thickness is associated with clinical improvement of negative symptoms in male adolescents with early-onset first-episode psychosis. *Schizophr Res* 2010; **117**: 225–6.
 - 65 Arango C, Rapado-Castro M, Reig S, Castro-Fornieles J, González-Pinto A, Otero S, et al. Progressive brain changes in children and adolescents with first-episode psychosis. *Arch Gen Psychiatry* 2012; **69**: 16–26.
 - 66 Fraguas D, Merchan-Naranjo J, del Rey-Mejias A, Castro-Fornieles J, González-Pinto A, Rapado-Castro M, et al. A longitudinal study on the relationship between duration of untreated psychosis and executive function in early-onset first-episode psychosis. *Schizophr Res* 2014; **158**: 126–33.
 - 67 Cheng X, Zhang H, Zhang J, Xu P, Jin P, Fang H, et al. Comparison of clinical characteristics and treatment efficacy in childhood-onset schizophrenia and adolescent-onset schizophrenia in mainland China: a retrospective study. *Early Interv Psychiatry* 2021; **15**: 1721–9.
 - 68 Kumra S, Frazier JA, Jacobsen LK, McKenna K, Gordon CT, Lenane MC, et al. Childhood-onset schizophrenia - a double-blind clozapine-haloperidol comparison. *Arch Gen Psychiatry* 1996; **53**: 1090–7.
 - 69 Shaw P, Sporn A, Gogtay N, Overman GP, Greenstein D, Gochman P, et al. Childhood-onset schizophrenia - a double-blind, randomized clozapine-olanzapine comparison. *Arch Gen Psychiatry* 2006; **63**: 721–30.

- 70 Kumra S, Kranzler H, Gerbino-Rosen G, Kester HM, De Thomas C, Kafantaris V, et al. Clozapine and "high-dose" olanzapine in refractory early-onset schizophrenia: A 12-week randomized and double-blind comparison. *Biol Psychiatry* 2008; **63**: 524–9.
- 71 Correll CU, Tocco M, Hsu J, Goldman R, Pikalov A. Short-term efficacy and safety of lurasidone versus placebo in antipsychotic-naïve versus previously treated adolescents with an acute exacerbation of schizophrenia. *Eur Psychiatry* 2022; **65**(1): e23.
- 72 McConville BJ, Arvanitis LA, Thyrum PT, eh C, Wilkinson LA, Chaney RO, et al. Pharmacokinetics, tolerability, and clinical effectiveness of quetiapine fumarate: an open-label trial in adolescents with psychotic disorders. *J Clin Psychiatry* 2000; **61**: 252–60.
- 73 McConville B, Carrero L, Sweitzer D, Potter L, Chaney R, Foster K, et al. Long-term safety, tolerability, and clinical efficacy of quetiapine in adolescents: an open-label extension trial. *J Child Adolesc Psychopharmacol* 2003; **13**: 75–82.
- 74 Kim Y, Cho S-C, Shin M-S, Kim J-W, Choi S-C, Kim B-N. Aripiprazole in the treatment of early-onset schizophrenia spectrum disorder: a case series in Korean children and adolescents. *Curr Ther Res Clin Exp* 2009; **70**: 173–83.
- 75 Findling RL, McNamara NK, Youngstrom EA, Branicky LA, Demeter CA, Schulz SC. A prospective, open-label trial of olanzapine in adolescents with schizophrenia. *J Am Acad Child Adolesc Psychiatry* 2003; **42**: 170–5.
- 76 Ross RG, Novins D, Farley GK, Adler LE. A 1-year open-label trial of olanzapine in school-age children with schizophrenia. *J Child Adolesc Psychopharmacol* 2003; **13**: 301–9.
- 77 Mozes T, Ebert T, Michal S-E, Spivak B, Weizman A. An open-label randomized comparison of olanzapine versus risperidone in the treatment of childhood-onset schizophrenia. *J Child Adolesc Psychopharmacol* 2006; **16**: 393–403.
- 78 Gothelf D, Apter A, Reidman J, Brand-Gothelf A, Bloch Y, Gal G, et al. Olanzapine, risperidone and haloperidol in the treatment of adolescent patients with schizophrenia. *J Neural Transm* 2003; **110**: 545–60.
- 79 Parellada MJ, Moreno D, Ruiz-Sancho A, Medina O, Arango C. Open-label randomized trial comparing the efficacy and tolerability of quetiapine and olanzapine in first episode psychosis in adolescents. *Eur Neuropsychopharmacol* 2006; **16**: S377–8.
- 80 Savitz AJ, Lane R, Nuamah I, Gopal S, Hough D. Efficacy and safety of paliperidone extended release in adolescents with schizophrenia: a randomized, double-blind study. *J Am Acad Child Adolesc Psychiatry* 2015; **54**: 126–37.
- 81 Calvo A, Moreno M, Ruiz-Sancho A, Rapado-Castro M, Moreno C, Sánchez-Gutiérrez T, et al. Intervention for adolescents with early-onset psychosis and their families: a randomized controlled trial. *J Am Acad Child Adolesc Psychiatry* 2014; **53**: 688–96.
- 82 Calvo A, Moreno M, Ruiz-Sancho A, Rapado-Castro M, Moreno C, Sánchez-Gutiérrez T, et al. Psychoeducational group intervention for adolescents with psychosis and their families: a two-year follow-up. *J Am Acad Child Adolesc Psychiatry* 2015; **54**: 984–90.
- 83 Rapado-Castro M, Moreno C, Ruiz-Sancho A, Camino F, Arango C, Mayoral M. Role of executive function in response to a problem solving based psychoeducational intervention in adolescents with psychosis: the PIENSA trial revisited. *J Clin Med* 2019; **8**(12): 2108.
- 84 Hemmerle MJ, Roepcke B, Eggers C, Oades RD. Evaluation of a two-year intensive outpatient care programme for adolescents with schizophrenia. *Zeitschrift Fur Kinder-Und Jugendpsychiatrie Und Psychotherapie* 2010; **38**: 361–9.
- 85 Müller H, Kommesch M, Güttgemanns J, Wessels H, Walger P, Lehmkühl G, et al. Cognitive behavioral therapy in adolescents with early-onset psychosis: a randomized controlled pilot study. *Eur Child Adolesc Psychiatry* 2020; **29**: 1011–22.
- 86 Salazar de Pablo G, Guinart D, Cornblatt BA, Auther AM, Carrión RE, Carbon M, et al. DSM-5 attenuated psychosis syndrome in adolescents hospitalized with non-psychotic psychiatric disorders. *Front Psychiatry* 2020; **11**: 568982.
- 87 Gerstenberg M, Furrer M, Tesler N, Franscini M, Walitza S, Huber R. Reduced sleep spindle density in adolescent patients with early-onset schizophrenia compared to major depressive disorder and healthy controls. *Schizophr Res* 2020; **221**: 20–8.
- 88 Niendam TA, Bearden CE, Johnson JK, McKinley M, Loewy R, O'Brien M, et al. Neurocognitive performance and functional disability in the psychosis prodrome. *Schizophr Res* 2006; **84**: 100–11.
- 89 Rodríguez-Pascual M, Álvarez-Subiela X, Tor J, Pardo M, de la Serna E, Sugranyes G, et al. Major depressive disorder and attenuated negative symptoms in a child and adolescent sample with psychosis risk syndrome: the CAPRIS study. *Eur Child Adolesc Psychiatry* 2021; **31**: 1431–40.
- 90 Addington J, Shah H, Liu L, Addington D. Reliability and validity of the Calgary Depression Scale for Schizophrenia (CDSS) in youth at clinical high risk for psychosis. *Schizophr Res* 2014; **153**: 64–7.
- 91 Pelizza L, Poletti M, Azzali S, Paterlini F, Garlassi S, Scazza I, et al. Anhedonia in adolescents at ultra-high risk (UHR) of psychosis: findings from a 1-year longitudinal study. *Eur Arch Psychiatry Clin Neurosci* 2020; **270**: 337–50.
- 92 Quijada Y, Tizon JL, Artigue J, Kwapil TR, Barrantes-Vidal N. Attachment style predicts 6-month improvement in psychoticism in persons with at-risk mental states for psychosis. *Early Interv Psychiatry* 2012; **6**: 442–9.
- 93 Lencz T, Smith CW, Auther A, Correll CU, Cornblatt B. Nonspecific and attenuated negative symptoms in patients at clinical high-risk for schizophrenia. *Schizophr Res* 2004; **68**: 37–48.
- 94 Quijada Y, Tizon JL, Artigue J, Parra B. At-risk mental state (ARMS) detection in a community service center for early attention to psychosis in Barcelona. *Early Interv Psychiatry* 2010; **4**: 257–62.
- 95 Armando M, Girardi P, Vicari S, Menghini D, Digilio MC, Pontillo M, et al. Adolescents at ultra-high risk for psychosis with and without 22q11 deletion syndrome: a comparison of prodromal psychotic symptoms and general functioning. *Schizophr Res* 2012; **139**: 151–6.
- 96 Bartholomeusz CF, Whittle SL, Pilioussis E, Allott K, Rice S, Schäfer MR, et al. Relationship between amygdala volume and emotion recognition in adolescents at ultra-high risk for psychosis. *Psychiatry Res Neuroimaging* 2014; **224**: 159–67.
- 97 Lindgren M, Manninen M, Laajasalo T, Mustonen U, Kalska H, Suvisaari J, et al. The relationship between psychotic-like symptoms and neurocognitive performance in a general adolescent psychiatric sample. *Schizophr Res* 2010; **123**: 77–85.
- 98 Pitzanti M, Pontillo M, Vicari S, Armando M, Pasini A. 22q11 microdeletion syndrome and ultra-high risk for psychosis: the role of neurological soft signs as an independent marker of vulnerability for psychosis. *Early Interv Psychiatry* 2019; **13**: 1191–8.
- 99 Pelizza L, Poletti M, Azzali S, Garlassi S, Scazza I, Paterlini F, et al. Subjective experience of social cognition in adolescents at ultra-high risk of psychosis: findings from a 24-month follow-up study. *Eur Child Adolesc Psychiatry* 2020; **29**: 1645–57.
- 100 White RK, Niendam TA, Bearden CE, Zinberg J, O'Brien MP, Cannon TD. Gender differences in symptoms, functioning and social support in patients at ultra-high risk for developing a psychotic disorder. *Schizophr Res* 2008; **104**: 237–45.
- 101 Giordano GA, Palumbo D, Pontillo M, Mucci A, Galderisi S, Vicari S. Negative symptom domains in children and adolescents at ultra-high risk for psychosis: association with real-life functioning. *Schizophr Bull Open* 2022; **3**(1): sgac025.
- 102 Lindgren M, Kuvaja H, Jokela M, Therman S. Predictive validity of psychosis risk models when applied to adolescent psychiatric patients. *Psychol Med* [Epub ahead of print] 24 May 2021. Available from: <https://doi.org/10.1017/s0033291721001938>.
- 103 Zhang T, Xu L, Chen Y, Wei Y, Tang X, Hu Y, et al. Conversion to psychosis in adolescents and adults: similar proportions, different predictors. *Psychol Med* 2021; **51**: 2003–11.
- 104 O'Brien MP, Zinberg JL, Bearden CE, Lopez SR, Kopelowicz A, Daley M, et al. Parent attitudes and parent adolescent interaction in families of youth at risk for psychosis and with recent-onset psychotic symptoms. *Early Interv Psychiatry* 2008; **2**: 268–76.
- 105 Amminger GP, Schafer MR, Papageorgiou K, Klier CM, Cotton SM, Harrigan SM, et al. Long-chain omega-3 fatty acids for indicated prevention of psychotic disorders: a randomized, placebo-controlled trial. *Arch Gen Psychiatry* 2010; **67**: 146–54.
- 106 Amminger GP, Mechelli A, Rice S, Kim SW, Klier CM, McNamara RK, et al. Predictors of treatment response in young people at ultra-high risk for psychosis who received long-chain omega-3 fatty acids. *Transl Psychiatry* 2015; **5**: e495.
- 107 McGorry PD, Nelson B, Phillips LJ, Yuen HP, Francey SM, Thampi A, et al. Randomized controlled trial of interventions for young people at ultra-high risk of psychosis: twelve-month outcome. *J Clin Psychiatry* 2013; **74**: 349–56.
- 108 Miklowitz DJ, O'Brien MP, Schlosser DA, Addington J, Candan KA, Marshall C, et al. Family-focused treatment for adolescents and young adults at high risk for psychosis: results of a randomized trial. *J Am Acad Child Adolesc Psychiatry* 2014; **53**: 848–58.
- 109 Bobes J, Arango C, García-García M, Rejas J. Prevalence of negative symptoms in outpatients with schizophrenia spectrum disorders treated with antipsychotics in routine clinical practice: findings from the CLAMORS study. *J Clin Psychiatry* 2010; **71**: 280–6.
- 110 Patel R, Jayatilleke N, Broadbent M, Chang CK, Foskett N, Gorrell G, et al. Negative symptoms in schizophrenia: a study in a large clinical sample of patients using a novel automated method. *BMJ Open* 2015; **5**(9): e007619.
- 111 Owen MJ, O'Donovan MC. Schizophrenia and the neurodevelopmental continuum: evidence from genomics. *World Psychiatry* 2017; **16**: 227–35.
- 112 Kao YC, Liu YP. Effects of age of onset on clinical characteristics in schizophrenia spectrum disorders. *BMC Psychiatry* 2010; **10**: 63.
- 113 Fusar-Poli P, Schultze-Lutter F, Cappucciati M, Rutigliano G, Bonoldi I, Stahl D, et al. The dark side of the moon: meta-analytical impact of recruitment

- strategies on risk enrichment in the clinical high risk state for psychosis. *Schizophr Bull* 2016; **42**: 732–43.
- 114 Kim PS, Shin JH, Lee CH. 조기 발병 조현병과 성인기 발병 조현병의 임상적 특성의 비교 : 후향적 연구 [Comparison of clinical characteristics between patients with early-onset and adult-onset schizophrenia: a retrospective study]. *J Korean Soc Biol Psychiatry* 2013; **20**: 179–86.
- 115 Bahn GH, Noh BG, Yoon DJ, Kim YH, Yeum TH. 조기 발병 및 후기 발병 정신분열병 환자의 임상 특징 비교 [Comparison of clinical characteristics between inpatients with early & late-onset schizophrenia]. *J Korean Soc Biol Ther Psychiatry* 2002; **8**: 242–53.
- 116 Correll CU, Rubio JM, Inczedy-Farkas G, Birnbaum ML, Kane JM, Leucht S. Efficacy of 42 pharmacologic cotreatment strategies added to antipsychotic monotherapy in schizophrenia: systematic overview and quality appraisal of the meta-analytic evidence. *JAMA Psychiatry* 2017; **74**: 675–84.
- 117 Galling B, Vernon JA, Pagsberg AK, Wadhwa A, Grudnikoff E, Seidman AJ, et al. Efficacy and safety of antidepressant augmentation of continued antipsychotic treatment in patients with schizophrenia. *Acta Psychiatr Scand* 2018; **137**: 187–205.
- 118 Helfer B, Samara MT, Huhn M, Klupp E, Leucht C, Zhu Y, et al. Efficacy and safety of antidepressants added to antipsychotics for schizophrenia: a systematic review and meta-analysis. *Am J Psychiatry* 2016; **173**: 876–86.
- 119 Ziebart C, Bobos P, MacDermid JC, Furtado R, Sobczak DJ, Doering M. The efficacy and safety of exercise and physical activity on psychosis: a systematic review and meta-analysis. *Front Psychiatry* 2022; **13**: 807140.
- 120 Carrión RE, Demmin D, Auther AM, McLaughlin D, Olsen R, Lencz T, et al. Duration of attenuated positive and negative symptoms in individuals at clinical high risk: associations with risk of conversion to psychosis and functional outcome. *J Psychiatr Res* 2016; **81**: 95–101.
- 121 Carrion RE, Correll CU, Auther AM, Cornblatt BA. A severity-based clinical staging model for the psychosis prodrome: longitudinal findings from the New York recognition and prevention program. *Schizophr Bull* 2017; **43**: 64–74.
- 122 Fusar-Poli P, Cappucciati M, Rutigliano G, Lee TY, Beverly Q, Bonoldi I, et al. Towards a standard psychometric diagnostic interview for subjects at ultra high risk of psychosis: CAARMS versus SIPS. *Psychiatry J* 2016; **2016**: 7146341.
- 123 Fusar-Poli P, Spencer T, De Micheli A, Curzi V, Nandha S, McGuire P. Outreach and support in South-London (OASIS) 2001-2020: twenty years of early detection, prognosis and preventive care for young people at risk of psychosis. *Eur Neuropsychopharmacol* 2020; **39**: 111–22.
- 124 Wen D, Wang J, Yao G, Liu S, Li X, Li J, et al. Abnormality of subcortical volume and resting functional connectivity in adolescents with early-onset and prodromal schizophrenia. *J Psychiatr Res* 2021; **140**: 282–8.
- 125 Remberk B, Bazynska AK, Bronowska Z, Potocki P, Krempa-Kowalewska A, Niwiński P, et al. Which aspects of long-term outcome are predicted by positive and negative symptoms in early-onset psychosis? An exploratory eight-year follow-up study. *Psychopathology* 2015; **48**: 47–55.
- 126 Remberk B, Bogumil B, Bronowska Z, Namysłowska I, Potocki P. Retrospective analysis of psychopathological presentation of psychotic episodes in adolescent inpatients. *Psychiatr Pol* 2012; **46**: 177–88.
- 127 Correll CU, Lencz T, Smith CW, Auther AM, Nakayama EY, Hovey L, et al. Prospective study of adolescents with subsyndromal psychosis: characteristics and outcome. *J Child Adolesc Psychopharmacol* 2005; **15**: 418–33.
- 128 Salazar de Pablo G, Jauhar S, Fusar-Poli P. Psychosocial intervention without antipsychotic medication for brief psychotic episodes? *Schizophr Bull Open* 2020; **1**(1): sgaa037.
- 129 Francey S, O'Donoghue B, Nelson B, Graham J, Baldwin L, Yuen HP, et al. Psychosocial intervention with or without antipsychotic medication for first-episode psychosis: a randomized noninferiority clinical trial. *Schizophr Bull Open* 2020; **1**(1): sgaa015.
- 130 Howes O, Whitehurst T, Shatalina E, Townsend L, Onwordi EC, Mak TLA, et al. The clinical significance of duration of untreated psychosis: an umbrella review and random-effects meta-analysis. *World Psychiatry* 2021; **20**: 75–95.
- 131 Kemp DE, Correll CU, Tohen M, Delbello MP, Ganocy SJ, Findling RL, et al. Associations among obesity, acute weight gain, and response to treatment with olanzapine in adolescent schizophrenia. *J Child Adolesc Psychopharmacol* 2013; **23**: 522–30.
- 132 Salazar de Pablo G, Studerus E, Vaquerizo-Serrano J, Irving J, Catalan A, Oliver D, et al. Implementing precision psychiatry: a systematic review of individualized prediction models for clinical practice. *Schizophr Bull* 2021; **47**: 284–97.
- 133 Baldwin H, Loebel-Davidsohn L, Oliver D, Salazar de Pablo G, Stahl D, Riper H, et al. Real-world implementation of precision psychiatry: a systematic review of barriers and facilitators. *Brain Sci* 2022; **12**(7): 934.
- 134 Krynicki CR, Upthegrove R, Deakin JFW, Barnes TRE. The relationship between negative symptoms and depression in schizophrenia: a systematic review. *Acta Psychiatr Scand* 2018; **137**: 380–90.
- 135 Demyttenaere K, Anthonis E, Acsai K, Correll CU. Depressive symptoms and PANSS symptom dimensions in patients with predominant negative symptom schizophrenia: a network analysis. *Front Psychiatry* 2022; **13**: 795866.
- 136 Salazar de Pablo G, Besana F, Arienti V, Catalan A, Vaquerizo-Serrano J, Cabras A, et al. Longitudinal outcome of attenuated positive symptoms, negative symptoms, functioning and remission in people at clinical high risk for psychosis: a meta-analysis. *EClinicalMedicine* 2021; **36**: 100909.
- 137 Fusar-Poli P, Papanastasiou E, Stahl D, Rocchetti M, Carpenter W, Shergill S, et al. Treatments of negative symptoms in schizophrenia: meta-analysis of 168 randomized placebo-controlled trials. *Schizophr Bull* 2015; **41**(4): 892–9.
- 138 Pringsheim T, Lam D, Ching H, Patten S. Metabolic and neurological complications of second-generation antipsychotic use in children: a systematic review and meta-analysis of randomized controlled trials. *Drug Saf* 2011; **34**: 651–68.
- 139 Solmi M, Fornaro M, Ostinelli E, Zangani C, Croatto G, Monaco F, et al. Safety of 80 antidepressants, antipsychotics, anti-attention-deficit/hyperactivity medications and mood stabilizers in children and adolescents with psychiatric disorders: a large scale systematic meta-review of 78 adverse effects. *World Psychiatry* 2020; **19**: 214–32.
- 140 Correll CU, Galling B, Pawar A, Krivko A, Bonetto C, Ruggeri M, et al. Comparison of early intervention services vs treatment as usual for early-phase psychosis: a systematic review, meta-analysis, and meta-regression. *JAMA Psychiatry* 2018; **75**: 555–65.
- 141 Maki PH, Miettunen J, Kaakinen M, Moilanen I, Taanila A, Jones PB, et al. Negative symptoms precede the onset of first episode psychosis in a prospective general population sample of adolescents. *European Psychiatry* 2008; **23**(suppl 2): S129.
- 142 Mensi MM, Molteni S, Iorio M, Filosi E, Ballante E, Balottin U, et al. Prognostic accuracy of DSM-5 attenuated psychosis syndrome in adolescents: prospective real-world 5-year cohort study. *Schizophrenia Bull* 2021; **47**: 1663–73.
- 143 Zakowicz P, Skibinska M, Pawlak J. Disembodied language in early-onset schizophrenia. *Front Psychiatry*. 2022; **13**: 888844.
- 144 Reddy YCJ, Srinath S, Sathyanarayana V, Girimaji S, Seshadri S. Clinical profile of early onset schizophrenia: a review of 43 cases. *NIMHANS J* 1996; **14**: 93–8.
- 145 Karakus OB, Ermis C, Tunçtürk M, Yuksel AS, Alarslan S, Saglam Y, et al. Identifying clinical and psychological correlates of persistent negative symptoms in early-onset psychotic disorders. *Clin Child Psychol Psychiatry* 2022; **27**: 1288–302.
- 146 Kafali HY, Bildik T, Bora E, Yuncu Z, Erermis HS. Distinguishing prodromal stage of bipolar disorder and early onset schizophrenia spectrum disorders during adolescence. *Psychiatry Res* 2019; **275**: 315–25.
- 147 Schneider M, Armando M, Schultze-Lutter F, Pontillo M, Vicari S, Debbane M, et al. Prevalence, course and psychosis-predictive value of negative symptoms in 22q11.2 deletion syndrome. *Schizophr Res* 2019; **206**: 386–93.

