



UNIL | Université de Lausanne

Unicentre

CH-1015 Lausanne

<http://serval.unil.ch>

Year : 2023

Cerebrospinal fluid HIV-1 escape in patients with neurocognitive symptoms: pooled data from a neuro-HIV platform and the NAMACO study

Filippidis Paraskevas

Filippidis Paraskevas, 2023, Cerebrospinal fluid HIV-1 escape in patients with neurocognitive symptoms: pooled data from a neuro-HIV platform and the NAMACO study

Originally published at : Thesis, University of Lausanne

Posted at the University of Lausanne Open Archive <http://serval.unil.ch>

Document URN : urn:nbn:ch:serval-BIB_68C07D506DA24

Droits d'auteur

L'Université de Lausanne attire expressément l'attention des utilisateurs sur le fait que tous les documents publiés dans l'Archive SERVAL sont protégés par le droit d'auteur, conformément à la loi fédérale sur le droit d'auteur et les droits voisins (LDA). A ce titre, il est indispensable d'obtenir le consentement préalable de l'auteur et/ou de l'éditeur avant toute utilisation d'une oeuvre ou d'une partie d'une oeuvre ne relevant pas d'une utilisation à des fins personnelles au sens de la LDA (art. 19, al. 1 lettre a). A défaut, tout contrevenant s'expose aux sanctions prévues par cette loi. Nous déclinons toute responsabilité en la matière.

Copyright

The University of Lausanne expressly draws the attention of users to the fact that all documents published in the SERVAL Archive are protected by copyright in accordance with federal law on copyright and similar rights (LDA). Accordingly it is indispensable to obtain prior consent from the author and/or publisher before any use of a work or part of a work for purposes other than personal use within the meaning of LDA (art. 19, para. 1 letter a). Failure to do so will expose offenders to the sanctions laid down by this law. We accept no liability in this respect.



UNIL | Université de Lausanne

Faculté de biologie
et de médecine

UNIVERSITE DE LAUSANNE - FACULTE DE BIOLOGIE ET DE MEDECINE

Département de Médecine Interne

Service de Maladies Infectieuses

Cerebrospinal fluid HIV-1 escape in patients with neurocognitive symptoms: pooled data from a neuro-HIV platform and the NAMACO study

THESE

préparée sous la direction du Professeur Matthias Cavassini
(avec la collaboration de la Docteure Katharine Darling)

et présentée à la Faculté de biologie et de médecine de
l'Université de Lausanne pour l'obtention du grade de

DOCTEUR EN MEDECINE

par

Paraskevas FILIPPIDIS

Médecin diplômé de Grèce
Originaire d'Athènes, Grèce

Lausanne
2023

Imprimatur

Vu le rapport présenté par le jury d'examen, composé de

Directeur.trice de thèse

Professeur **Matthias Cavassini**

Co-Directeur.trice de thèse

Expert.e

Professeur **Oriol Manuel**

**Vice-Directeur de l'Ecole
doctorale**

Professeur **John Prior**

la Commission MD de l'Ecole doctorale autorise l'impression de la thèse de

Monsieur Paraskevas Filippidis

intitulée

***Cerebrospinal fluid HIV-1 escape in patients with neurocognitive
symptoms: pooled data from
a neuro-HIV platform and the NAMACO study***

Lausanne, le 24 janvier 2023

*pour Le Doyen
de la Faculté de Biologie et de Médecine*


Monsieur le Professeur John Prior

Vice-Directeur de l'Ecole doctorale

OPEN

Cerebrospinal Fluid HIV-1 Escape in Patients With Neurocognitive Symptoms: Pooled Data From a Neuro-HIV Platform and the NAMACO Study

Paraskevas Filippidis, MD,^a Jose Damas, MD,^a Benjamin Viala, MD,^b Frederic Assal, MD,^c Olivier Nawej Tshikung, MD,^d Philip Tarr, MD, PhD,^e Tobias Derfuss, MD,^f Michael Oberholzer, MD,^g Ilijas Jelcic, MD,^h Thomas Hundtberger, MD,ⁱ Leonardo Sacco, MD,^j Matthias Cavassini, MD,^a Renaud Du Pasquier, MD,^k and Katharine E.A. Darling, MD, PhD,^a
the NAMACO study group, Swiss HIV Cohort Study

Background: Despite modern antiretroviral therapy, human immunodeficiency virus-1 (HIV-1) ribonucleic acid (RNA) escape into the cerebrospinal fluid (CSF) may occur. We examined the prevalence of and factors associated with CSF HIV-1 escape among people living with HIV (PLWH) in Switzerland.

Setting: The Neurocognitive Assessment in the Metabolic and Aging Cohort study is an ongoing, prospective, longitudinal, multicenter study within the Swiss HIV Cohort Study. The neuro-HIV platform is a multidisciplinary, single-day outpatient consultation at Lausanne University Hospital.

Methods: We pooled data from the Neurocognitive Assessment in the Metabolic and Aging Cohort study and the neuro-HIV platform participants who underwent lumbar puncture between 2011 and 2019. Both patient groups had neurocognitive symptoms. Cerebrospinal fluid HIV-1 escape was defined as the presence of quantifiable CSF HIV-1 RNA when plasma HIV-1 RNA was suppressed or CSF HIV-1 RNA greater than plasma HIV-1 RNA when the latter was detectable.

Results: Of 1166 PLWH assessed, 288 underwent lumbar puncture. Cerebrospinal fluid HIV-1 escape was observed in 25 PLWH (8.7%) of whom 19 (76%) had suppressed plasma HIV-1 RNA. Characteristics of PLWH were comparable whether they had CSF HIV-1 escape or not, including comorbidities, time since HIV diagnosis (15 vs 16 years, $P = 0.9$), median CD4 nadir ($158.5/\text{mm}^3$ vs $171/\text{mm}^3$, $P = 0.6$), antiretroviral CSF penetration-effectiveness score (7 vs 7 points, $P = 0.8$), and neurocognitive diagnosis based on Frascati criteria and radiological findings.

Conclusions: In this large pooled sample of PLWH with neurocognitive symptoms, CSF HIV-1 escape occurred in 8.7% of PLWH. People living with HIV with CSF HIV-1 escape presented no distinctive clinical or paraclinical characteristics. We conclude that lumbar puncture is unavoidable in confirming CSF HIV-1 escape.

Key Words: neuro-HIV, CSF escape, neurocognitive, compartmentalized infection, reservoir

(*J Acquir Immune Defic Syndr* 2023;93:219–228)

From the ^aInfectious Diseases Service, Department of Medicine, Lausanne University Hospital and University of Lausanne, Switzerland; ^bInfectious Diseases Department, Centre Hospitalier Alpes Léman, France; ^cDepartment of Neurology, University Hospital of Geneva, Switzerland; ^dHIV Unit, Infectious Diseases Division, Department of Medicine, University Hospital of Geneva, Switzerland; ^eDepartment of Medicine, Kantonsspital Bruderholz, University of Basel, Bruderholz; ^fDepartment of Neurology, University Hospital Basel, University of Basel, Switzerland; ^gDepartment of Neurology, Inselspital, Bern University Hospital, University of Bern, Switzerland; ^hDepartment of Neurology, University Hospital Zurich and University of Zurich, Switzerland; ⁱDepartment of Neurology, Cantonal Hospital, Saint Gallen, Switzerland; ^jNeurocentre of Southern Switzerland, Ente Ospedaliero Cantonale (EOC), Lugano, Switzerland; and ^kService of Neurology, Department of Clinical Neurosciences, Lausanne University Hospital and University of Lausanne, Switzerland.

This work was supported by the Swiss HIV Cohort Study (Grant number 148522, project 811) and the Swiss National Science Foundation (Grant numbers 163348 and 324730_192777/1) (NAMACO study), ViiV Healthcare (NAMACO study and neuro-HIV platform), and Gilead Sciences (neuro-HIV platform). The data of the Swiss HIV Cohort Study are gathered by the Five Swiss University Hospitals, two Cantonal Hospitals, 15 affiliated hospitals, and 36 private physicians (listed in <http://www.shcs.ch/180-health-care-providers>).

P.F., J.D., B.V., F.A., O.N.T., P.T., T.D., M.O., I.J., T.H., and R.D.P. report no conflict of interest related to this work.

L.S. has participated in a phase III clinical study with and in advisory boards for Biogen, including a written statement. MC's institution has received research grants from Gilead, MSD, and ViiV unrelated to this publication and meeting fees from Gilead unrelated to this publication and offered expert testimony for Gilead, MSD, and ViiV. KEAD's institution has received research funding unrelated to this publication from Gilead and offered expert testimony for MSD. This work was presented in the form of oral communication at the virtual Conference on Retroviruses and Opportunistic Infections (vCROI) on March 6–10, 2021, and at the Joint Annual Meeting of the Swiss Society for Infectious Diseases at Montreux on September 2–3, 2021.

P.F., K.E.A.D., and M.C. contributed to the study conception and design. Material preparation, data collection, and analysis were performed by P.F., J.D., and B.V. The first draft of the manuscript was written by P.F., and all authors commented on previous versions of the manuscript. All authors read and approved the final manuscript.

Correspondence to: Paraskevas Filippidis, MD, Infectious Diseases Service Lausanne University Hospital (CHUV) Rue du Bugnon 46, 1011 Lausanne, Switzerland (e-mail: Paraskevas.Filippidis@chuv.ch).

Copyright © 2023 The Author(s). Published by Wolters Kluwer Health, Inc. This is an open access article distributed under the Creative Commons Attribution License 4.0 (CC-BY-NC-ND), which permits unrestricted use, distribution, and reproduction in any medium, provided the original work is properly cited.

INTRODUCTION

Early after acute infection, human immunodeficiency virus-1 (HIV-1) invades the brain tissue where it establishes latency, thus contributing to the formation of a central nervous system (CNS) reservoir.¹ Despite the high efficacy of modern antiretroviral therapy (ART) in reducing both plasma and cerebrospinal fluid (CSF) HIV-1 ribonucleic acid (RNA),² higher HIV-1 RNA levels in CSF than plasma are sometimes observed in ART-treated individuals. This discordance is referred to as CSF HIV-1 escape.^{3,4} Concern has been raised that viral persistence in the CSF may result in chronic immune activation and inflammation^{5,6} and, more rarely, to compartmentalized drug resistance, leading to ongoing neuroinflammatory damage.^{7–10} Although the exact origin of detectable CSF HIV-1 remains unclear, hypotheses include ongoing viral replication within the brain itself and transitory CSF compartment exposure to virus transported through migrating blood cells.^{5,11} Management of CSF HIV-1 escape rests mainly on ART optimization, including genotypic viral resistance testing in plasma and CSF, avoiding atazanavir-based and dual ART therapies, and considering double-dose dolutegravir in cases with documented or suspected integrase strand transfer inhibitor resistance,¹² although no universally accepted practice currently exists because of insufficient scientific evidence.

Among people living with HIV (PLWH) on ART, the reported prevalence of CSF HIV-1 escape is highly variable between studies, ranging from 3% to 28%^{10,13–23} (Table 1). Predictive factors for CSF HIV-1 escape include low ART CNS penetration,¹⁶ protease inhibitor (PI)-based ART regimens,^{16,20,21} persistent low-level viremia,^{19,24,25} length of time on ART,^{17,26} drug-resistant virus in the CSF,^{8,25,26} low CD4 count nadir,^{3,20,25,26} and CSF pleiocytosis.^{14,20,21} However, many of these studies reporting on predictive factors were case series and/or included PLWH from different ART eras in whom lumbar puncture (LP) was obtained for highly disparate reasons. Although asymptomatic CSF HIV-1 escape is described,^{17,27} a wide spectrum of neurocognitive symptoms and signs associated with CSF HIV-1 escape has been described, ranging from mild memory impairment to HIV-associated dementia.²⁸ However, given that CSF HIV-1 RNA levels do not always correlate with neurocognitive symptoms and signs,^{17,25} the relationship between CSF HIV-1 escape and clinical characteristics is yet to be elucidated.

The objectives of this study were to evaluate the prevalence of CSF HIV-1 escape among PLWH in Switzerland and to identify potential predictive factors and clinical characteristics associated with this phenomenon.

METHODS

Study Design

In a cross-sectional observational analysis, we retrospectively identified and pooled data from PLWH from two different patient groups in Switzerland who had undergone LP. Patients from each group were included in the current study regardless of plasma HIV-1 RNA level and ART regimen.

The first patient group was a subset of the Neurocognitive Assessment in the Metabolic and Aging Cohort

(NAMACO) study, an ongoing, prospective, longitudinal, multicenter, and multilingual study, which includes people with HIV aged ≥ 45 years, enrolled in the Swiss HIV Cohort Study (SHCS).^{29,30} Although the NAMACO study recruits asymptomatic and symptomatic patients, all participants diagnosed with neurocognitive impairment (NCI) as part of the NAMACO study evaluation are offered formal neurological examination, brain magnetic resonance imaging (MRI), and LP (targeted testing approach, opt-out consent), as recommended by the European AIDS Clinical Society.¹² NAMACO participants do not undergo formal psychiatric evaluation but all complete the Center for Epidemiologic Studies Depression scale, a questionnaire rating depressive symptoms.²⁹ For the current study, we included NAMACO study participants diagnosed with NCI who had undergone LP (Fig. 1). In the NAMACO study database, it was possible to identify ART changes but not possible to determine whether the change occurred in response to CSF escape.

The second patient group comprised patients assessed at a multidisciplinary, single-day outpatient neuro-HIV platform, conducted at Lausanne University Hospital. The neuro-HIV platform receives 2 to 3 PLWH with symptomatic or suspected NCI per month.³¹ Platform patients can be of any age, from all over Switzerland, and enrolled in the SHCS or not. All are offered a full diagnostic work-up with specialist neurological, neuropsychological, psychiatric and HIV evaluation, brain MRI, and LP (universal testing approach, opt-out consent).³² Depression is diagnosed using the Montgomery–Asberg Depression Rating Scale and after formal psychiatric assessment. Medical records and all clinic letters were available for all neuro-HIV platform patients seen at our center.

Standard Protocol Approvals, Registrations, and Patient Consents

The ethics committees of each cantonal hospital center approved the NAMACO study protocol, and the ethics committee of the Canton of Vaud approved the neuro-HIV platform protocol (study protocol number 44/11, 7th February 2011). All participants signed informed consent before inclusion in the respective studies.

Definitions

Patients were classified as symptomatic when reporting neurocognitive symptoms or when presenting objective neuropsychological abnormalities. NCI was diagnosed and classified on clinical neuropsychological evaluation according to Frascati criteria.³³ Based on this classification, non-HIV-associated NCI refers to NCI considered to be due to untreated or suboptimally treated conditions not directly linked to HIV, such as psychiatric disorders (including depression), substance use, ART toxicity and structural damage associated with neurodegenerative disorders, previous opportunistic CNS infection, stroke, or trauma. In cases for which both HIV- and non-HIV-associated factors were identified in the same patient, the most probable cause was defined after discussion between different specialists in the neuro-HIV platform and based on neuropsychological evaluation in the NAMACO

TABLE 1. Prevalence of CSF HIV-1 Escape in Previous Studies (2011–2018)

Authors, Publication year	Geographical Location	Study Period	Total participants, n	Age (years)	Definition of CSF HIV-1 Escape	Number of CSF HIV-1 Escape Cases	Estimated Prevalence	Asymptomatic* Patients With CSF HIV-1 Escape, n (%)
Studies including asymptomatic patients								
Eden et al, 2010	Gothenburg, Sweden San Francisco, United States	2002–2010	69	45 (median)	PVL: <50 and CVL: >50	7	10%	69 (100%)
Studies including both asymptomatic and neurosymptomatic patients (sorted by CSF HIV-1 escape definition)								
Calcagno et al, 2015	Torino, Italy	NS	127	46 (median)	PVL: <50 and CVL: >50	24	28.6%	NS
Pérez-Valero et al, 2019	United States (HNRC, CHARTER)	2003–2011	1264	46 (mean)	PVL: <50 and CVL: >50	55	4.4%	34 (61.8%)
De Almeida et al, 2020	Paraná, Brazil	2018	68	43 (median)	PVL: <50 and CVL: >50	7	10.3%	NS
Rawson et al, 2012	London, United Kingdom	2008–2010	142	45 (mean)	PVL: <50, CVL: >200 or CVL ≥0.5 log ₁₀ PVL	30	21%	NS (mainly symptomatic)
Mukerji et al, 2017	United States (Boston, NNTC)	2005–2016	626	50 (mean)	PVL: <50, CVL: >50 or CVL ≥0.5 log ₁₀ PVL	41	6.5%	30 (73.1%)
Trunfio et al, 2020	Torino, Italy	2010–2019	97	NS	PVL: <20, CVL: >20, or CVL ≥0.5 log ₁₀ PVL	19	19.6%	NS (mainly symptomatic)
Mukerji et al, 2018	United States (NNTC, CHARTER, HNRC)	2005–2016	1063	46 (mean)	PVL: <50, CVL: >50, or CVL > PVL	77	7.2%	33 (42.9%)
Studies including neurosymptomatic patients (sorted by CSF HIV-1 escape definition)								
Bavaro et al, 2019	Bari, Italy	2001–2015	75	42.5 (median)	PVL: <25 and CVL: >25	2	3%	0 (0%)
Kugathasan et al, 2017	London, United Kingdom	2011–2015	146	45 (median)	PVL: <50 and CVL: >50	9	6.2%	0 (0%)
Di Carlofelice et al, 2018	London, United Kingdom	2015–2017	38	51 (median)	PVL: <20, CVL: >20, or CVL ≥0.5 log ₁₀ PVL	2	5.3%	0 (0%)
Dravid et al, 2018	Pune, Western India	2009–2017	71	38 (median)	PVL: <20, CVL: >20, or CVL ≥0.5 log ₁₀ PVL†	20	28.2%	0 (0%)
Filippidis et al, 2022 (current study)	Lausanne, Switzerland	2011–2019	288	53 (median)	PVL: <LOQ, CVL: >LOQ, or CVL > PVL	25	8.8%	0 (0%)

Studies are grouped based on the presence of symptoms and the definition used for CSF HIV-1 escape. When CSF HIV-1 escape was presented separately from plasma/CSF HIV-1 discordance in a single study, only prevalence of CSF HIV-1 escape is provided in this table.

*Patients were asymptomatic if they reported no neuropsychological symptoms and if they presented no neuropsychological abnormalities.

†In this study, the criteria listed are referred to as CSF/plasma HIV-1 discordance.

Abbreviations: CVL, CSF viral load; HNRC, HIV Neurobehavioral Research Center cohort; LOQ, limit of quantification; NNTC, National NeuroAIDS Tissue Consortium; NS, not specified; PVL, plasma viral load.

study. No patient in our study had a CNS coinfection on assessment for CSF HIV-1 escape. All patients had plasma HIV-1 RNA measured at the time of CSF HIV-1 RNA measurements. In our study, CSF HIV-1 escape was defined as either the presence of quantifiable HIV-1 RNA in the CSF at

any level when plasma HIV-1 RNA was undetectable or as CSF HIV-1 RNA greater than plasma HIV-1 RNA when the latter was detectable, as previously described and currently recommended by the European AIDS Clinical Society.^{12,34} Detectable HIV-1 RNA was defined as any HIV-1 RNA

detected above the local laboratory’s PCR detection limit, which was at 20 copies per ml in our study. Measurement of CSF white blood cell count, total protein and oligoclonal bands, and peripheral blood CD4 count was performed using routine methods. Genotypic viral resistance tests were performed in CSF or plasma samples when clinically indicated and technically feasible. Antiretroviral therapy penetration in the CNS was estimated using the CNS penetration-effectiveness (CPE) score, as proposed by Letendre et al³⁵ in the CNS HIV ART Effects Research (CHARTER) Study. Finally, standard clinical 3-Tesla MRI protocols were used, encompassing high-resolution T1-weighted magnetization, as well as T2* mapping, MP2RAGE, diffusion tensor imaging, and Flair 3D sequences. MRI examination in NCI is performed to exclude structural brain abnormalities, which may explain neurocognitive symptoms, rather than to “diagnose” HIV-associated NCI. As no specific radiological pattern has been recognized to date, MRI examinations performed in the two patient groups were considered abnormal in the presence of any pathological finding reported by the radiologist, regardless of the finding’s clinical relevance, including gray or white matter lesion (of any degree) with or without contrast enhancement, brain atrophy, or mass effect.

Statistical Analysis

Statistical analyses were performed using Stata SE 17 (StataCorp, College Station, TX). Descriptive results were expressed as proportion (percentage) or as median with

interquartile range. The Pearson χ^2 or the Fisher exact test (for categorical variables) or the Wilcoxon rank-sum test (for continuous variables) was used to evaluate differences in characteristics between groups.

Data Availability

Data not provided in the article because of space limitations may be shared (anonymized) at the request of any qualified investigator for purposes of replicating procedures and results.

RESULTS

From March 2011 to April 2019, we assessed a total of 1166 patients across the two patient groups (NAMACO and neuro-HIV platform) of whom we excluded 878 patients who did not undergo LP. Among the remaining 288 patients, 25 (8.7%) were diagnosed with CSF HIV-1 escape (Fig. 1). Of these, only 3 patients of 25 (12%) had CSF HIV-1 RNA <1.0 log₁₀ greater than plasma HIV-1 RNA.

We observed no significant difference between patients with and without CSF HIV-1 escape in terms of their demographic profile, comorbidities, or brain MRI findings (Table 2). Among patients with CSF HIV-1 escape, 17 (68%) had an abnormal MRI of whom 7 (41.1%) had cortical or subcortical atrophy, 4 (23.5%) had white matter abnormalities, 1 (5.8%) had contrast-enhancing lesions, and 5 (29.4%) had unknown radiological abnormalities (missing data). No significant difference among different MRI patterns was observed between patients with and without CSF HIV-1 escape. We found that detectable plasma HIV-1 RNA was more frequent in patients with CSF HIV-1 escape (6 patients of 25, 24%) compared with patients with no CSF escape (28 patients of 263, 10.7%, $P = 0.04$; Cohen’s $d = 0.49$, 95% CI: 0.08–0.90). We found no significant difference in neurocognitive performance based on Frascati criteria ($P = 0.9$). Among patients with CSF HIV-1 escape, neuropsychological evaluation revealed normal neurocognitive function in 4 patients (16%), HIV-associated NCI in 10 patients (40%), and non-HIV-associated NCI in 11 patients (44%). Among the 11 patients with non-HIV-associated NCI, 9 (81.8%) had depression, and 1 had mental retardation (9%); the specific cause was not available for the last patient. Symptoms of depression were present in 18.3% (28/153) of NAMACO study participants, based on a Center for Epidemiologic Studies Depression score >16 (moderate-to-severe depressive symptoms), and depression was diagnosed in 82.8% (111/132) of neuro-HIV platform patients, based on Montgomery–Asberg Depression Rating Scale and psychiatric evaluation. Overall, there was no significant association between depression and CSF HIV-1 escape ($P = 0.5$). Regarding ART, we found no difference in CPE score ($P = 0.8$) nor in ART regimens, although we observed a trend toward more patients on dual therapy (including dolutegravir plus lamivudine or rilpivirine) in the CSF HIV-1 group ($P = 0.07$) (Table 2). Regarding CSF analysis, abnormal CSF white blood cells were more prevalent in the CSF HIV-1 escape group ($P < 0.001$). We observed no

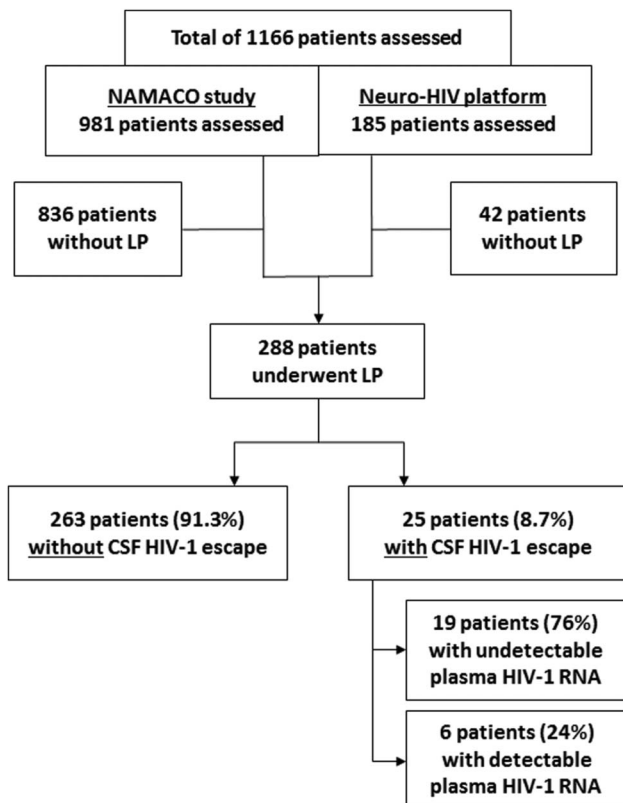


FIGURE 1. Flow diagram of included patients.

Downloaded from http://journals.lww.com/jaids by BMDiFsePHKav1Zoum1IQIN4a+kLhEZgshHo4XMI0hCjwCX1A WnYQpIICrHD3I3D00dRyT7V5fAcI3Vc4/OA/pdDa8KkGKv0Ymy+78= on 06/22/2023

TABLE 2. Characteristics of Patients With and Without CSF HIV-1 Escape

	Total (N = 288)	HIV-1 CSF Escape (N = 25)	No HIV-1 CSF Escape (N = 263)	P
Demographic characteristics				
Female sex	97 (33.5)	9 (36.3)	88 (33.5)	0.8
Age (years)	53 (47–59)	53 (48–58)	53 (47–60)	0.9
Ethnicity				0.8
White	226 (78.5)	19 (76)	207 (78.7)	
Black	46 (16)	4 (16)	42 (15.9)	
Hispano-American	12 (4.2)	2 (8)	10 (3.8)	
Asian	1 (0.4)	0 (0)	1 (0.4)	
Other	3 (1.1)	0 (0)	3 (1.1)	
Comorbidities				
Active smoker	101 (35.1)	10 (40)	91 (34.6)	0.8
Metabolic disorder*	26 (9.1)	2 (8)	24 (9.1)	0.8
Cardiovascular disease	36 (12.5)	1 (4)	35 (13.3)	0.1
HIV-related characteristics				
Time from HIV diagnosis (years)	15.5 (9–23)	15 (9–26)	16 (9–23)	0.9
CD4 count nadir (/mm ³)	171 (81–237)	158.5 (81–236.5)	171 (70–278)	0.6
CD4 count current (/mm ³)	600 (446–781)	558 (459–646)	611 (444–790)	0.2
Plasma HIV-1 RNA detectable	34 (11.8)	6 (24)	28 (10.7)	0.04§
Low-level viremia, plasma HIV RNA > 50 and:				
< 200 copies/mL	14 (4.9)	3 (12.5)	11 (4.2)	0.08
< 400 copies/mL	17 (5.9)	4 (16.7)	13 (4.9)	0.02
< 500 copies/mL	17 (5.9)	4 (16.7)	13 (4.9)	0.02
ART regimen				
NNRTI-based therapy	80 (27.8)	5 (20.0)	75 (46.3)	0.6
PI-based therapy	73 (25.4)	8 (32.0)	65 (24.8)	0.7
INSTI-based therapy	95 (33.2)	5 (20.8)	90 (34.4)	0.2
Dual therapy	5 (1.7)	1 (4.0)	4 (1.5)	0.07
CSF penetration-effectiveness (CPE) score	7 (7–9)	7 (7–9)	7 (7–9)	0.8
CSF analysis				
CSF HIV-1 RNA	0 (0–0)	49 (35–190)	0 (0–0)	<0.001
CSF white blood cell count ≥ 5 cells/mm ³	28 (10.9)	9 (36.0)	19 (8.2)	<0.001
CSF proteins >450 mg/L	142 (50.0)	14 (56.0)	128 (49.4)	0.5
CSF-specific oligoclonal bands†	84/135 (62.9)	7 (63.6)	77 (62.6)	0.9
Neuropsychological classification				
Frascati criteria				0.9
Absence of NCI	44 (15.3)	4 (16.0)	40 (15.2)	
Asymptomatic NCI (ANI)	127 (44.1)	9 (36.0)	118 (44.9)	
Mild neurocognitive disorder (MND)	14 (4.9)	1 (4.0)	13 (4.9)	
HIV-associated dementia (HAD)	1 (0.4)	0 (0)	1 (0.4)	
Non-HIV-associated NCI	102 (35.4)	11 (44.0)	91 (34.6)	
Radiology				
Abnormal brain MRI‡	206 (71.5)	17 (68.0)	189 (71.9)	0.8

Data are median (interquartile range) or number of cases (%).

*Diabetes mellitus or thyroid disorder.

†Oligoclonal band data available only for patients undergoing lumbar puncture within the neuro-HIV platform.

‡Using standard MRI protocols.

§Cohen's d = 0.49 (95% CI: 0.08–0.90).

Abbreviations: NNRTI, non-nucleoside reverse transcriptase inhibitors; PI, protease inhibitors; INSTI, integrase strand transfer inhibitor; NCI, neurocognitive impairment; MRI, magnetic resonance imaging.

difference in CSF proteins between the two groups ($P = 0.5$). Among patients evaluated in the neuro-HIV platform, the presence of CSF-specific oligoclonal bands as a sign of intrathecal IgG synthesis did not differ between patients with or without CSF HIV-1 escape (Table 2).

Of the 25 patients with CSF HIV-1 escape, 3 (12%) had low levels of detectable plasma HIV-1, defined as plasma HIV-1 RNA >50 copies/mL and <200 copies/mL, but this proportion was not significantly different to that among patients with no CSF escape ($P = 0.08$). When

Downloaded from http://journals.lww.com/jaids by BMDMfsePHKav1zEumt1QIN4a+KJLhEZgbsH04XMM0hCwWCX1A WNYQp/101rHD3I3D000dRy7TVSfACI3VcA/QAVpDd8KKGKv0Ymy+78= on 06/22/2023

comparing other plasma HIV-1 cutoffs, namely plasma HIV-1 RNA >50 copies/mL and <400, <500, or <1000 copies/mL, a significant difference was observed between patients with and without CSF escape ($P = 0.02$, $P = 0.02$, and $P = 0.03$, respectively). However, we could not examine persistent low-level viremia (requiring at least two consecutive plasma HIV-1 RNA measurements after 12 months of ART³⁶) because of the lack of longitudinal data. Furthermore, isolated HIV-1 resistance in CSF (with ART-sensitive HIV-1 in plasma) was observed in 3 patients with CSF HIV-1 escape (12%). However, viral genotyping was not routinely performed in all patients and was unsuccessful in patients with low CSF HIV-1 RNA. Among patients with CSF HIV-1 escape, ART switch was proposed in 6 patients (of 25, 24%), all from the neuro-HIV platform. The switch indication was isolated CSF viral resistance in 3 patients and ART optimization in terms of burden pill, potential toxicity, pharmacokinetics, and/or CPE score in the other 3 patients. Characteristics of patients diagnosed with CSF HIV-1 escape are shown in Table 3.

DISCUSSION

In this cross-sectional analysis of a large case series of PLWH with suspected or confirmed NCI, the prevalence of CSF HIV-1 escape was 9% (25 patients), based on the latest definition.^{12,34} Among the 19 patients with CSF HIV-1 escape and undetectable plasma HIV-1 RNA, no parameter (or group of parameters) was predictive of CSF viral escape, demonstrating that LP is the only means of confirming this phenomenon.

An important consideration when estimating CSF HIV-1 escape prevalence is whether the study population is symptomatic or exclusively asymptomatic. Asymptomatic CSF HIV-1 escape refers to patients who are free of symptoms but who have detectable CSF HIV-1 RNA. This should be distinguished from asymptomatic NCI, which implies the presence of mild NCI without functional impairment (unimpaired activities of daily living) independent of CSF viral status.³³ Although most patients in our study reported neurocognitive symptoms, formal neuropsychological evaluation did not confirm NCI in 16% of patients with and 15% of patients without CSF HIV-1 escape. In comparison, among studies of exclusively symptomatic patients, CSF HIV-1 escape prevalence ranged from 3% to 6%^{10,15,18} to 28%.¹⁶ Similarly, studies including both symptomatic and asymptomatic patients showed a prevalence varying between 4% and 28%.^{13,14,19–23} Among asymptomatic patients in one case series by Eden et al, CSF HIV-1 escape prevalence was estimated at 10%¹⁷ (Table 1).

Consistent with previous studies,^{15–17,20} it was not possible in our study population to differentiate between patients with or without CSF HIV-1 escape on the basis of demographic profile, comorbidities, brain MRI findings, or neurocognitive diagnosis based on Frascati criteria (Table 1). These results underline the lack of sensitivity and specificity of these diagnostic tools, which is partly due to the non-specific clinical features associated with CSF escape. In other words, it still remains unknown why some CSF HIV-1 escape

events are associated with cognitive impairment, whereas others are not. Regarding CSF analysis, we found elevated CSF white blood cells to be a strong predictive factor for CSF HIV-1 escape, as previously described,^{14,20,21} but this was not the case for CSF proteins.

As for HIV-related characteristics, detectable plasma HIV-1 RNA was associated with CSF HIV-1 escape ($P = 0.04$). However, although 90% of patients without CSF HIV-1 escape had undetectable HIV-1 RNA in plasma, three-quarters of patients with CSF HIV-1 escape also had well-controlled infection. This is similar to previous reports.^{15,20,22} We did observe an association between plasma HIV-1 viral loads up to 400 copies/mL and CSF HIV-1 escape ($P = 0.02$). However, this association was not observed when using a cutoff of 200 copies/mL ($P = 0.08$), probably because of low sample size. Of note, the interpretation of this result is limited by the cross-sectional nature of our study and the lack of consecutive plasma viral load measurements. A similar association between CSF HIV-1 escape and viremia was reported by Nightingale et al²⁵ in a prospective multicenter study of 153 patients in the United Kingdom, where CSF HIV-1 escape was found in 7 of 40 patients (18%) with low-level viremia compared with none of the 43 patients who had complete (plasma) viral suppression ($P = 0.005$). Another cross-sectional study of 69 asymptomatic patients with undetectable viremia in two clinical centers in Sweden and California reported that the number of plasma viral blips was strongly associated with CSF HIV-1 escape, with a median of 2.5 blips (interquartile range 1–4) compared with zero blips (interquartile range 0–1) in the group without CSF HIV-1 escape ($P = 0.001$).¹⁷ Recurrent CSF HIV-1 escape in patients with historical evidence of low-level viremia has been also described.¹⁹

Regarding ART, the CPE score was not predictive of CSF viral escape in our study. Several other studies have failed to demonstrate an association between CPE and CSF viral escape.^{17,20,21} Protease inhibitor-based regimens have been shown to be associated with more frequent CSF HIV-1 escape,^{16,20,21} although this was not confirmed in our study. Similarly, we found no difference in dolutegravir use between patients with and without CSF HIV-1 escape, although patients on dolutegravir were underrepresented in our series. Finally, we observed a trend toward more CSF HIV-1 escape among PLWH on dual therapy, as previously described.²³ This remains to be confirmed by studies with longer patient follow-up.

Two small retrospective case series have described patients with undetectable plasma HIV-1 RNA on ART who developed new neurological and/or neurocognitive symptoms without alternative diagnoses and who had detectable CSF HIV-1 RNA.^{3,26} In our study of 25 patients with CSF HIV-1 escape, almost half were diagnosed, paradoxically, as having non-HIV-associated NCI. These patients were mostly from the neuro-HIV platform group and so symptomatic by definition. The diagnosis of non-HIV-associated NCI could have been based on concomitant depressive symptoms or diagnosed depression. Equally, NAMACO study factors not directly linked to HIV, such as toxic substance use or concomitant medicines with

TABLE 3. Characteristics of Patients Diagnosed With CSF HIV-1 Escape

Patient	Patient Group	Age (years)	Sex	Time From HIV Diagnosis (years)	CD4 Count Current (Cells/mm ³)	CD4 Count Nadir (Cells/mm ³)	ART on Diagnosis of CSF HIV-1 Escape	Plasma HIV-1 RNA (Copies/mL)	CSF HIV-1 RNA (Copies/mL)	CSF Analysis (Cells, Proteins)	Isolated CSF HIV-1 Resistance	ART Modification within 6 mo
1	NAM	61	F	15	646	110	ABC-3TC-RAL	0	40	2/mm ³ , 305 mg/L		No
2	NAM	75	M	12	1054	34	ABC-3TC-DTG	0	20	2/mm ³ , 478 mg/L		
3	NAM	59	M	22	506	19	TDF-FTC-DRV/r-ETV	0	49	1/mm ³ , 430 mg/L		
4	NAM	51	F	9	933	257	TDF-FTC-EFV	0	35	1/mm ³ , 270 mg/L		
5	NAM	62	M	19	516	119	RPV-DTG	0	160	5/mm ³ , 680 mg/L		
6	NAM	52	F	7	524	170	Unknown (study drug)	0	29	1/mm ³ , 240 mg/L		
7	NAM	64	F	2	365	185	TDF-FTC-EFV	0	31	2/mm ³ , 700 mg/L		
8	NAM	57	M	28	646	231	ABC-FTC-TDF-FAPV/r	0	55	3/mm ³ , 292 mg/L		
9	NAM	56	M	30	323	123	ABC-3TC-ATV/r	0	248	15/mm ³ , 596 mg/L		AZT-3TC-RAL-DRV/r*
10	NAM	76	M	12	635	147	TAF-FTC-NVP	0	55	1/mm ³ , 605 mg/L		TAF-FTC-NVP-DRV/r*
11	NAM	58	M	30	698	60	TDF-FTC-DRV/r	0	126	25/mm ³ , 564 mg/L	No	TDF-FTC-DRV/r-DTG-ETV*
12	NAM	62	M	30	670	80	TDF-FTC-DRV/r	0	499	18/mm ³ , 490 mg/L		TDF-FTC-DTG-NVP*
13	NAM	57	M	26	480	200	ABC-3TC-ATV	0	28	1/mm ³ , 380 mg/L		ABC-3TC-DTG*
14	PLAT	53	M	13	601	147	TDF-FTC-ATV/r	34	58	0.5/mm ³ , 349 mg/L		No†
15	PLAT	36	F	5	486	190	TDF-FTC-EFV	0	37	1/mm ³ , 267 mg/L		
16	PLAT	43	F	16	223	82	ABC-3TC-DTG	0	35	3/mm ³ , 250 mg/L		
17	PLAT	56	M	22	610	203	TDF-FTC-DRV/r	306	2040	5/mm ³ , 637 mg/L		Yes‡
18	PLAT	57	M	33	578	252	TAF-FTC-DRV/r	60	190	4/mm ³ , 518 mg/L		
19	PLAT	43	M	6	558	307	TDF-FTC-RAL	0	43	5/mm ³ , 354 mg/L		TDF-FTC-RAL-DRV/r
20	PLAT	47	M	1	171	5	TDF-FTC-RPV	0	27	0.2/mm ³ , 590 mg/L		TDF-FTC-RPV-MVC
21	PLAT	64	M	10	406	406	TDF-FTC-ETV-MVC	0	43	4/mm ³ , 2081 mg/L		ABC-3TC-ETV-MVC
22	PLAT	43	F	21	559	255	TAF-FTC-NVP	34	40	5/mm ³ , 361 mg/L		TAF-FTC-EVG/c-NVP
23	PLAT	48	M	9	349	242	TDF-FTC-DRV/r-RAL	80	301	2/mm ³ , 586 mg/L		TDF-FTC-DRV/r-ETV-MVC
24	PLAT	49	F	12	1322	67	TDF-FTC-DRV/r-MVC	59	930	8/mm ³ , 956 mg/L	Yes	FTC-DRV/r-MVC-ETV-DTG
25	PLAT	60	F	34	459	NA	ATV/r	41	2720	20/mm ³ , 536 mg/L		ABC-3TC-DTG

*Reason for ART change was not specified (CSF HIV-1 escape, toxicity, or other).

†Reassessment with a new lumbar puncture was proposed at 6–12 months to exclude CSF viral rebound.

‡ART modification was proposed, but adopted by the patient's treating infectious disease physician only at a later stage (on receipt of the CSF HIV-1 resistance profile).

Abbreviations: 3TC, lamivudine; ABC, abacavir; ATV, atazanavir; DRV, darunavir; DTG, dolutegravir; EFV, efavirenz; ETV, etravirine; F, female; FAPV, fosamprenavir; FTC, emtricitabine; M, male; MVC, maraviroc; NA, not available; NVP, nevirapine; NAM, NAMACO; PLAT, neuro-HIV platform; /r, ritonavir (booster); RAL, raltegravir; RPV, rilpivirine; TAF, tenofovir alafenamide fumarate.

neurological toxicity, were present in some patients, which may have deferred or masked HIV-associated NCI according to current definitions.^{33,37} Some of these patients may still have been classified correctly as having non-HIV-associated NCI,

with CSF HIV-1 escape representing a CSF viral blip without clinical consequence rather than persistent CSF viral replication. In keeping with this, 4 patients (16%) diagnosed with CSF HIV-1 escape had no proven NCI.

Downloaded from http://journals.lww.com/jaids by BhdMf5ePtkKav1zEoum1IQIN4a+kJLhEZgpsiHo4XMM0hC0ywcX1A WNYQpIIQrHD3I3D00dRy7T7SFACI3VCA/QAVpDd8KKGKv0my+78= on 06/22/2023

It is unclear whether CSF HIV-1 escape represents an active CNS infection, despite effective ART or whether, similar to plasma blips, it reflects low-level variations in release of virus into the CSF compartment. The clinical significance of these phenomena is yet to be elucidated. A retrospective longitudinal study by Eden et al²⁷ showed that at least one CSF HIV-1 blip may occur in more than one-third of asymptomatic PLWH, with only 3% having repeatedly detectable CSF virus and thus clinically relevant CSF HIV-1 escape. At the other extreme, compartmentalization of resistant HIV-1 in the CSF may occur with potentially devastating neurological consequences,^{7,9} and this phenomenon should always be excluded if technically feasible.²⁴ In our study, we observed isolated HIV-1 resistance in CSF (with undetectable HIV-1 RNA in plasma) in 12% of patients with CSF HIV-1 escape, a similar figure to that reported in a series of 86 symptomatic patients.¹⁰ Of note, the diagnosis of CSF HIV-1 escape resulted in ART modification in a quarter of our patients, illustrating the benefit of early diagnosis of CSF HIV-1 escape through LP. The choice of the new ART regimen was individualized and based on the treatment (pill burden, toxicity profile, and drug–drug interactions), genotypic viral resistance testing, pharmacokinetics, and scientific evidence for CSF HIV-1 escape treatment available at the time of patient assessment. Although this included review and/or optimization of CPE score (study period 2011–2019), data from the NAMACO study subsequently demonstrated a nonassociation between CPE score and NCI.³⁷

Our study has limitations. First, a potential selection bias exists for NAMACO study participants who could be symptomatic or asymptomatic before neurocognitive assessment. Neuro-HIV platform patients were all symptomatic or suspected by clinicians of having NCI. Second, the cross-sectional design did not allow us to determine the persistence of CSF HIV-1 escape or the possibility of late-onset NCI development in initially asymptomatic PLWH with CSF HIV-1 escape nor the clinical and virological outcome after ART modification. Furthermore, because we lacked longitudinal analysis, we described patients as having low levels of viremia at the time of plasma sampling, which is not the same as “low-level viremia,” a clinical entity that requires at least two consecutive plasma samples showing detectable HIV-1 RNA. Third, our analyses did not account for other neuropsychiatric conditions that can affect neurocognitive performance because these were assessed differently in the two study groups (depressive symptoms in the NAMACO study and formal psychiatric evaluation in the neuro-HIV platform). Fourth, the older age of patients included (mainly because of the NAMACO study inclusion criteria) may limit the generalizability of our findings in younger populations. Finally, although ART adherence is a critical factor in maintaining durable viral suppression³⁸ and low adherence has been shown to be associated with NCI,³⁹ this could not be fully assessed in our study because of incomplete quantitative data.

Despite these limitations, this study adds to the body of literature reporting CSF HIV-1 escape, being, to date, the largest European case series and the largest case series

worldwide studying exclusively symptomatic patients, and one of the largest using the latest CSF HIV-1 escape definition.^{12,34} In addition, our results are pragmatic and reflect real-life situations, although assessing CSF HIV-1 escape in a systematic way. Finally, the median age in our study was 53 years, partly because of the NAMACO age-related inclusion criterion, which is the oldest median age of PLWH in a CSF HIV-1 escape series. This is of particular importance, given the aging of PLWH which is associated with an increasing incidence of non-HIV-related comorbidities, including NCI of nonviral etiology.

In conclusion, we observed CSF HIV-1 escape in 8.7% of patients with suspected or confirmed NCI in a large case series. Importantly, three-quarters of our patients with CSF HIV-1 escape had undetectable plasma viral loads. With the exception of detectable plasma HIV-1 RNA, we found no reliable demographic, clinical, immunological, neurocognitive, or radiological predictive factor for CSF HIV-1 escape. Hence, we conclude that LP is the only means to detect CSF HIV-1 escape, and should be considered in all patients presenting NCI, especially in the absence of other factors not directly linked to HIV, because the identification of CSF HIV-1 escape through LP may prompt ART modification. However, in the exception of documented compartmentalized CSF resistance, it is still unknown whether and to what extent CSF HIV-1 escape might correlate with clinical outcome. Longitudinal studies will improve our understanding of the association between CSF HIV-1 escape and long-term CNS clinical outcomes by exploring the prevalence of viral persistence in the CSF and evaluating the clinical impact of ART modification in patients presenting CSF HIV-1 escape.

MEMBERS OF THE SWISS HIV COHORT STUDY

Abela I, Aebi-Popp K, Anagnostopoulos A, Battegay M, Bernasconi E, Braun DL, Bucher HC, Calmy A, Cavassini M, Ciuffi A, Dollenmaier G, Egger M, Elzi L, Fehr J, Fellay J, Furrer H, Fux CA, Günthard HF (President of the SHCS), Hachfeld A, Haerry D (deputy of "Positive Council"), Hasse B, Hirsch HH, Hoffmann M, Hösli I, Huber M, Kahlert CR (Chairman of the Mother & Child Substudy), Kaiser L, Keiser O, Klimkait T, Kouyos RD, Kovari H, Kusejko K (Head of Data Center), Martinetti G, Martinez de Tejada B, Marzolini C, Metzner KJ, Müller N, Nemeth J, Nicca D, Paioni P, Pantaleo G, Perreau M, Rauch A (Chairman of the Scientific Board), Schmid P, Speck R, Stöckle M (Chairman of the Clinical and Laboratory Committee), Tarr P, Trkola A, Wandeler G, and Yerly S.

ACKNOWLEDGMENTS

The authors thank all the patients participating in the NAMACO study. The authors thank all the infectious disease physicians and the study nurses working in the centers for their dedicated patient work and contribution to the NAMACO study. The authors thank the neuropsychologists Samanta Simioni, Severin Fruh, Stefanie Clarke, and Stefania Rossi, for their work in NAMACO. Finally, the authors thank the late Dr Kevin Robertson for his advice regarding the selection of cognitive tests and his encouragement to launch the study and to Prof Scott Letendre for providing support materials for some definitions in our study. The NAMACO

study group: director: Matthias Cavassini; codirector: Renaud Du Pasquier; neuropsychologists: Melanie Metral, Samanta Simioni, Peter Brugger, Klemens Gutbrod, Andreas U. Monsch, Ursi Kunze, Isaure Nadin, Severin Fruh, Ladina Schlosser, Marc Schwind, Riccardo Pignatti, Stefania Rossi, and Stefanie Clarke; neurologists: Frederic Assal, Tobias Derfuss, Sebastian von Arx, Gunter Eisele, Manuel Bertschi, Thomas Hundsberger, Michael Oberholzer, Illijas Jelcic, Leonardo Sacco, and Renaud Du Pasquier; infectious disease specialists: Alexandra Calmy, Thanh Doco Lecompte, Christoph Hauser, Alexia Cusini, Helen Kovari, Barbara Hasse, Philip Tarr, Marcel Stoeckle, Christoph Fux, Enos Bernasconi, Caroline Di Benedetto, Patrick Schmid, Katharine Darling and Matthias Cavassini; SHCS data center and data management unit: Katharina Kusejko, Yannick Vallet, Valerie Sormani, and Deolinda Alves; pharmacologist: Catia Marzolini and Laurent Decosterd; neuroimaging specialists: Cristina Granziera, Gunnar Krueger, Reto Meuli, and Maria Vargas.

REFERENCES

1. Gray LR, Roche M, Flynn JK, et al, Is the central nervous system a reservoir of HIV-1?. *Curr Opin HIV AIDS* 2014;9:552–558.
2. Mellgren A, Antinori A, Cinque P, et al, Cerebrospinal fluid HIV-1 infection usually responds well to antiretroviral treatment. *Antivir Ther*. 2005;10:701–707.
3. Canestri A, Lescure FX, Jaureguiberry S, et al, Discordance between cerebral spinal fluid and plasma HIV replication in patients with neurological symptoms who are receiving suppressive antiretroviral therapy. *Clin Infect Dis*. 2010;50:773–778.
4. Ferretti F, Gisslen M, Cinque P, Price RW. Cerebrospinal fluid HIV escape from antiretroviral therapy. *Curr HIV/AIDS Rep*. 2015;12: 280–288.
5. Eden A, Price RW, Spudich S, et al, Immune activation of the central nervous system is still present after >4 years of effective highly active antiretroviral therapy. *J Infect Dis*. 2007;196:1779–1783.
6. Yilmaz A, Price RW, Spudich S, et al, Persistent intrathecal immune activation in HIV-1-infected individuals on antiretroviral therapy. *J Acquir Immune Defic Syndr*. 2008;47:168–173.
7. Lescure FX, Moulignier A, Savatovsky J, et al, CD8 encephalitis in HIV-infected patients receiving cART: a treatable entity. *Clin Infect Dis*. 2013;57:101–108.
8. Liu L, Zhang Y, Wei F, et al, Discordant genotypic resistance and HIV-1 genetic diversity from paired plasma and cerebrospinal fluid samples in Chinese settings. *J Neurovirol*. 2013;19:131–136.
9. Soulie C, Grude M, Descamps D, et al, ANRS AC11 Resistance Study Group. Antiretroviral-treated HIV-1 patients can harbour resistant viruses in CSF despite an undetectable viral load in plasma. *J Antimicrob Chemother*. 2017;72:2351–2354.
10. Bavaro DF, Calamo A, Lepore L, et al, Cerebrospinal fluid compartmentalization of HIV-1 and correlation with plasma viral load and blood-brain barrier damage. *Infection* 2019;47:441–446.
11. Joseph SB, Trunfio M, Kincer LP, et al, What can characterization of cerebrospinal fluid escape populations teach us about viral reservoirs in the central nervous system?. *AIDS* 2019;33suppl 2:S171–S179.
12. European AIDS Clinical Society. EACS Guidelines - Version 11.0 - October 2021. *EACS 2021*. Available at https://www.eacsociety.org/media/final2021eacsguidelinesv11.0_oct2021.pdf
13. Calcagno A, Simiele M, Alberione MC, et al, Cerebrospinal fluid inhibitory quotients of antiretroviral drugs in HIV-infected patients are associated with compartmental viral control. *Clin Infect Dis*. 2015;60: 311–317.
14. de Almeida SM, Rotta I, de Pereira AP, et al, HIV Neurobehavioral Research Center HNRC Group. Cerebrospinal fluid pleocytosis as a predictive factor for CSF and plasma HIV RNA discordance and escape. *J Neurovirol*. 2020;26:241–251.

15. Di Carlofelice M, Everitt A, Muir D, Winston A. Cerebrospinal fluid HIV RNA in persons living with HIV. *HIV Med*. 2018;19: 365–368.
16. Dravid AN, Natrajan K, Kulkarni MM, et al, Discordant CSF/plasma HIV-1 RNA in individuals on virologically suppressive antiretroviral therapy in Western India. *Medicine (Baltimore)*. *Medicine* 2018;97: e9969.
17. Eden A, Fuchs D, Hagberg L, et al, HIV-1 viral escape in cerebrospinal fluid of subjects on suppressive antiretroviral treatment. *J Infect Dis*. 2010;202:1819–1825.
18. Kugathasan R, Collier DA, Haddow LJ, et al, Diffuse white matter signal abnormalities on magnetic resonance imaging are associated with human immunodeficiency virus type 1 viral escape in the central nervous system among patients with neurological symptoms. *Clin Infect Dis*. 2017;64: 1059–1065.
19. Mukerji SS, Misra V, Lorenz D, et al, Temporal patterns and drug resistance in CSF viral escape among ART-experienced HIV-1 infected adults. *J Acquir Immune Defic Syndr*. 2017;75:246–255.
20. Mukerji SS, Misra V, Lorenz DR, et al, Impact of antiretroviral regimens on cerebrospinal fluid viral escape in a prospective multi-cohort study of antiretroviral therapy-experienced human immunodeficiency virus-1-infected adults in the United States. *Clin Infect Dis*. 2018;67:1182–1190.
21. Perez-Valero I, Ellis R, Heaton R, et al, Cerebrospinal fluid viral escape in aviremic HIV-infected patients receiving antiretroviral therapy: prevalence, risk factors and neurocognitive effects. *AIDS (London, England)* 2019;33:475–481.
22. Rawson T, Muir D, Mackie NE, et al, Factors associated with cerebrospinal fluid HIV RNA in HIV infected subjects undergoing lumbar puncture examination in a clinical setting. *J Infect*. 2012;65: 239–245.
23. Trunfio M, Ruge W, Mighetto L, et al, Dual antiretroviral therapies are effective and safe regimens in the central nervous system of neurologically symptomatic people living with HIV. *AIDS (London, England)* 2020;34:1899–1906.
24. Anderson AM, Munoz-Moreno JA, McClernon DR, et al, CHARTER Group. Prevalence and correlates of persistent HIV-1 RNA in cerebrospinal fluid during antiretroviral therapy. *J Infect Dis*. 2017; 215:105–113.
25. Nightingale S, Geretti AM, Beloukas A, et al, Discordant CSF/plasma HIV-1 RNA in patients with unexplained low-level viraemia. *J Neurovirology*. 2016;22:852–860.
26. Peluso MJ, Ferretti F, Peterson J, et al, Cerebrospinal fluid HIV escape associated with progressive neurologic dysfunction in patients on antiretroviral therapy with well controlled plasma viral load. *AIDS* 2012;26:1765–1774.
27. Eden A, Nilsson S, Hagberg L, et al, Asymptomatic cerebrospinal fluid HIV-1 viral blips and viral escape during antiretroviral therapy: a longitudinal study. *J Infect Dis*. 2016;214:1822–1825.
28. Spudich SS, Ances BM. CROI 2017: neurologic complications of HIV infection. *Top Antivir Med*. 2017;25:69–76.
29. Metral M, Darling K, Locatelli I, et al, NAMACO study group, Swiss HIV Cohort Study. The neurocognitive assessment in the metabolic and aging cohort (NAMACO) study: baseline participant profile. *HIV Med*. 2020;21:30–42.
30. Scherrer AU, Traytel A, Braun DL, et al, Swiss HIV Cohort Study SHCS. Cohort profile update: the Swiss HIV cohort study (SHCS). *Int J Epidemiol*. 2022;51:33–34j.
31. Damas J, Darling KEA, Bidlingmeyer P, et al, One for All, All for One: Neuro-HIV Multidisciplinary Platform for the Assessment and Management of Neurocognitive Complaints in People Living with HIV. *HIV Med* 2023;1–11. Online Ahead of Print.
32. Vallotton K, Metral M, Chocron O, et al, Evaluation of an outpatient multidisciplinary Neuro-HIV clinic by the patients and referring doctors. *Rev Med Suisse* 2017;13:782–786. Evaluation de la plateforme Neuro-VIH d'un hopital universitaire par les patients et les medecins traitants.
33. Antinori A, Arendt G, Becker JT, et al, Updated research nosology for HIV-associated neurocognitive disorders. *Neurology* 2007;69: 1789–1799.
34. Winston A, Antinori A, Cinque P, et al, Defining cerebrospinal fluid HIV RNA escape: editorial review *AIDS*. *AIDS* 2019;33suppl 2:S107–S111.

Downloaded from <http://journals.lww.com/jaids> by BHD/MS/EP/Kav1z/Eum11/QN/44+K/LHEZ/gbsh/04X/M0h/CywcX1A

35. Letendre S, Marquie-Beck J, Capparelli E, et al, CHARTER Group. Validation of the CNS Penetration-Effectiveness rank for quantifying antiretroviral penetration into the central nervous system. *Arch Neurol*. 2008;65:65–70.
36. Gaifer Z, Boulassel MR. Low-level viremia predicts virological failure in HIV-infected Omani patients receiving antiretroviral therapy. *J Int Assoc Provid AIDS Care* 2020;19:2325958220979817.
37. Santos GMA, Locatelli I, Metral M, et al, Neurocognitive Assessment in the Metabolic and Aging Cohort NAMACO Study Group. Cross-sectional and cumulative longitudinal central nervous system penetration effectiveness scores are not associated with neurocognitive impairment in a well treated aging human immunodeficiency virus-positive population in Switzerland. *Open Forum Infect Dis*. 2019;6:ofz277.
38. Konstantopoulos C, Ribaldo H, Ragland K, et al, Antiretroviral regimen and suboptimal medication adherence are associated with low-level human immunodeficiency virus viremia. *Open Forum Infect Dis*. 2015;2:ofu119.
39. Kamal S, Locatelli I, Wandeler G, et al, the Swiss HIV Cohort Study. The presence of human immunodeficiency virus-associated neurocognitive disorders is associated with a lower adherence to combined antiretroviral treatment. *Open Forum Infect Dis*. 2017;4:ofx070.