

Vertical and Leg Stiffness Modeling During Running: Effect of Speed and Incline



Authors

Frédéric Meyer^{1,2} , Mathieu Falbriard³, Kamiar Aminian³, Gregoire P Millet¹

Affiliations

- 1 Institute of Sport Sciences, University of Lausanne, Lausanne, Switzerland
- 2 Department of informatics, University of Oslo Faculty of Mathematics and Natural Sciences, Oslo, Norway
- 3 Laboratory of Movement Analysis and Measurement (LMAM), EPFL, Lausanne, Switzerland

Key words

spring mass model, energy, kinetics, sport, biomechanics, physical performance

accepted 01.02.2023

published online 01.06.2023

Bibliography

Int J Sports Med 2023; 44: 673–679

DOI 10.1055/a-2044-4805

ISSN 0172-4622

© 2023. The Author(s).

This is an open access article published by Thieme under the terms of the Creative Commons Attribution-NonDerivative-NonCommercial-License, permitting copying and reproduction so long as the original work is given appropriate credit. Contents may not be used for commercial purposes, or adapted, remixed, transformed or built upon. (<https://creativecommons.org/licenses/by-nc-nd/4.0/>)

Georg Thieme Verlag KG, Rüdigerstraße 14,
70469 Stuttgart, Germany

Correspondence

Dr. Frédéric Meyer
University of Lausanne
Institute of Sport Sciences
batiment synathlon, b.3308
1015 Lausanne
Switzerland
Tel.: 0041786261780, Fax : 0041216923293
fmeyer.mail@gmail.com

ABSTRACT

A spring mass model is often used to describe human running, allowing to understand the concept of elastic energy storage and restitution. The stiffness of the spring is a key parameter and different methods have been developed to estimate both the vertical and the leg stiffness components. Nevertheless, the validity and the range of application of these models are still debated. The aim of the present study was to compare three methods (i. e., Temporal, Kinetic and Kinematic-Kinetic) of stiffness determination. Twenty-nine healthy participants equipped with reflective markers performed 5-min running bouts at four running speeds and eight inclines on an instrumented treadmill surrounded by a tri-dimensional motion camera system. The three methods provided valid results among the different speeds, but the reference method (i. e., Kinematic-Kinetic) provided higher vertical stiffness and lower leg stiffness than the two other methods (both $p < 0.001$). On inclined terrain, the method using temporal parameters provided non valid outcomes and should not be used. Finally, this study highlights that both the assumption of symmetry between compression and decompression phases or the estimation of the vertical displacement and changes in leg length are the major sources of errors when comparing different speeds or different slopes.

Introduction

Considering legs as springs has been introduced by Cavagna et al. [1] to explain the high efficiency of running. Indeed, if potential and kinetic energy are in anti-phase during walking, allowing for energy transfers, they are in phase during running [2]. The observed

running efficiency therefore implies an internal mechanism that absorb and restore mechanical energy. This mechanism has been used to describe a stretch shortening cycle, where animals can store and return elastic energy in muscles, tendons and ligaments while hopping, trotting or running [3–6]. Cavagna et al. [4]

observed a lower deformation of the lower limb with the increase of the running speed and suggested a quicker and more rigid spring at higher speed.

A spring mass model was then proposed by Blickhan [7] considering the human body as a single point mass bouncing on a mass-less spring. The limits of the model were clearly addressed, as it supposed similar take-off and landing velocities and symmetrical acceleration and deceleration phases during stance. Based on this model, Mc Mahon and Cheng [8] and then Farley and Gonzalez [9] provided equations to determine both vertical stiffness (K_{vert}) and leg stiffness (K_{leg}). They used maximal vertical force value during stance ($F_{z_{max}}$), vertical displacement of the center of mass (COM), running velocity (V) and foot contact time ($T_{contact}$). They assumed that the angles of the spring respectively at foot initial contact and toe off were identical. Finally, Morin et al. [10] developed equations allowing to estimate the maximal force using $T_{contact}$ and flight time T_{flight} . This method has been widely used, due to its simplicity since only spatio-temporal parameters are needed to calculate K_{vert} and K_{leg} . Globally, results based on the spring mass model seems to show constant leg stiffness as running speed increased [8–11].

Arampatzis et al. [12] developed another approach, using both kinetic and kinematic data to determine K_{vert} and K_{leg} (Eq. 1–2).

$$K_{vert} = \frac{F_{z_{max}}}{\Delta Z} [kN \cdot m^{-1}]$$

$$K_{leg} = \frac{F_{z_{max}}}{\Delta L} [kN \cdot m^{-1}]$$

A force platform was used to determine the maximal force, while COM vertical displacement (ΔZ) and changes in leg length (ΔL) were calculated using synchronized cameras and a 15 segments body model [13, 14]. They observed a clear effect of speed on K_{leg} , showing a discrepancy with the model-based method described above.

In a review by Brughelli and Cronin [15], indirect evidence of increased K_{leg} with speed was highlighted. These authors analysed 14 studies evaluating running stiffness and compared running speeds below vs higher than $5 m \cdot s^{-1}$. The average K_{leg} was 11.2 vs $17.0 kN \cdot m^{-1}$ in the low vs high speed, respectively. As several studies reported a constant leg stiffness with running speed increase [8, 10, 11] it is very interesting to gain more insight about these discrepancies. One may therefore hypothesize that the leg stiffness is dependent on the running speed, and that the calculation method *per se* modifies the outcome.

In addition to the effect of speed, another important aspect is the applicability of the spring-mass model for graded running. The model is indeed based on the assumption that the oscillations are symmetrical, which is not respected on a slope [16]. Nevertheless, using direct measurement of the maximal force and COM displacement should still provide coherent results, while the simplified equation developed by Morin et al. [10] should induce different outcomes. It would therefore be of interest to compare the different models for both K_{vert} and K_{leg} on different slopes. As Dewolf et al. [17] showed the progressive reduction of the rebound mechanism when slope increase, (both in uphill and downhill), one may hypothesize that both K_{vert} and K_{leg} would reach very important values on slopes.

Materials and Methods

Subjects

Twenty-nine healthy individuals (19 males, 10 females) volunteered in this study (age: 34 ± 10 [mean \pm SD] years; height: 1.74 ± 0.09 m; body mass: 68.3 ± 12.2 kg). They were running between one and 5 times a week. Every participant was informed on the benefits and risks of this investigation prior to giving their written informed consent to participate in this study. The protocol was approved by the local ethical committee and conducted according to the declaration of Helsinki.

Design

All participants visited the laboratory on four occasions to perform each of the experimental tests. A level running incremental test was performed during the first session, with the first stage beginning at $8 km \cdot h^{-1}$ during 4 min and the running speed then increased by $1 km \cdot h^{-1}$ every minute. Then, during the next three sessions participants had to perform six to eight running bouts at different speeds (8, 10, 12 and $14 km \cdot h^{-1}$) and different treadmill slopes (-20 , -10 , -5 , 0 , 5 , 10 , 15 and 20%). For each condition, participants had to run for 4 min to allow reaching a steady state [18], following by two to five minutes of recovery between each trial. The high demanding conditions (20% at 12 and $14 km \cdot h^{-1}$ and 15% at $14 km \cdot h^{-1}$) were not performed, and the trials were also interrupted when the participant was not able to reach a steady state. The order of the speed and slope conditions was randomized for each participant and each session was separated by at least one week of recovery.

Methodology

An instrumented treadmill (T-170-FMT, Arsalis, Belgium) sampling at 1000 Hz was used to record 3D reaction force, and a 3D cameras system composed of eight infrared cameras (Vicon Motion System, Ltd., Oxford, UK) was used to record kinematic data at 200 Hz. Before each test session, participants were equipped with 39 retro-reflective markers (14 mm in diameter) following the integrated plug-in Gait Model. Kinetics and kinematics data were recorded during 30 s starting 45 s before the end of the trial.

A specific procedure (Matlab version R2019a, MathWorks Inc., Natick, MA, USA) was developed to process and analyze data [19]: To reduce the noise inherent to the treadmill's vibrations, we first applied, on the vertical ground reaction force (GRF) signal, a 2nd-order stop-band Butterworth filter with edge frequencies set to 25 and 65 Hz. The filter configuration was chosen empirically to obtain a satisfactory reduction of the oscillations observed during flight phases (i. e., subject not in contact with the treadmill) while minimizing its widening effect during ground contact time.

The instants of initial contact (IC) and terminal contact (TC) were identified using a threshold of 7 % of bodyweight on the filtered vertical ground reaction force signal, based on a previously published work [19]. The IC and TC of the left and right legs were combined to determine the $T_{contact}$ (the time duration between IC and TC of the same leg) and the T_{flight} (the time duration between the TC of one leg and the IC of the other leg).

Depending on available instrument and possible application, three methods were used and compared to estimate Kvert and Kleg (Eq. 1–2) from Fz_{max} , ΔL and ΔZ :

Temporal method where only spatio-temporal parameters were provided using Eq. 3–5 [10]. The leg length (L_{mod}) was estimated as $0.53 \cdot \text{height}$ (in m) [20], m is the mass of the participant, g the gravity constant.

$$Fz_{max} = m \cdot g \cdot \frac{\pi}{2} \cdot \left(\frac{T_{flight}}{T_{contact}} + 1 \right) \text{ [N]}$$

$$\Delta Z = -\frac{Fz_{max} \cdot T_{contact}^2}{m \cdot \pi^2} + g \cdot \frac{T_{contact}^2}{8} \text{ [m]}$$

$$\Delta L = L_{mod} - \sqrt{L_{mod}^2 - \left(\frac{V \cdot T_{contact}}{2} \right)^2} + \Delta Z \text{ [m]}$$

Kinetic method in which a force platform is available to determine the vertical force (Fz) and estimate the vertical speed (Vz) and vertical displacement of the center of mass (h) (Eq. 6–10) [21].

$$Fz_{max} = \max(Fz(t)) \text{ [N]}$$

$$Vz(t) = \int_0^t \frac{Fz - m \cdot g}{m} dt - \frac{1}{T} \int_0^T \int_0^t \frac{Fz - m \cdot g}{m} dt dt \text{ [m/s]}$$

$$h(t) = \int_0^t Vz(t) dt \text{ [m]}$$

$$\Delta Z = \min([h(IC), h(TC)]) - \min(h(t)) \text{ [m]}$$

$$\Delta L = L_{mod} - \sqrt{L_{mod}^2 - \left(\frac{V \cdot T_{contact}}{2} \right)^2} + \Delta Z \text{ [m]}$$

Kinematic-Kinetic method, where kinematic data obtained from 3D motion capture system was used to estimate ΔZ and ΔL with morphological estimation models [13, 14], (Eq. 11–13). The variables X , Y and Z are the 3D coordinate of a given point in a global reference system, L represent the leg length. The point of force application on the treadmill (subscript $_{PFA}$) was obtained directly from the force plate [22, 23] and the subscript $_{Hip}$ is given for the Hip 3D position calculated by the plug-in Gait Model.

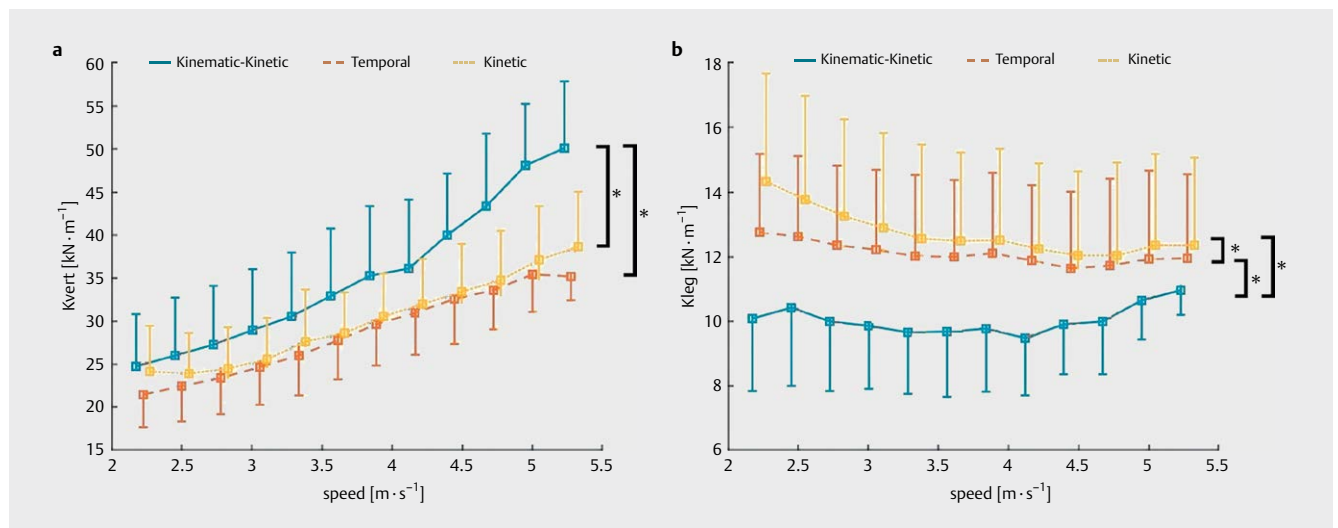
$$\Delta Z = \max(Z_{COM}(t)) - \max([Z_{COM}(IC), Z_{COM}(TC)]) \text{ [m]}$$

$$L(t) = \sqrt{(X_{Hip}(t) - X_{PFA}(t))^2 + (Y_{Hip}(t) - Y_{PFA}(t))^2 + (Z_{Hip}(t) - Z_{PFA}(t))^2} \text{ [m]}$$

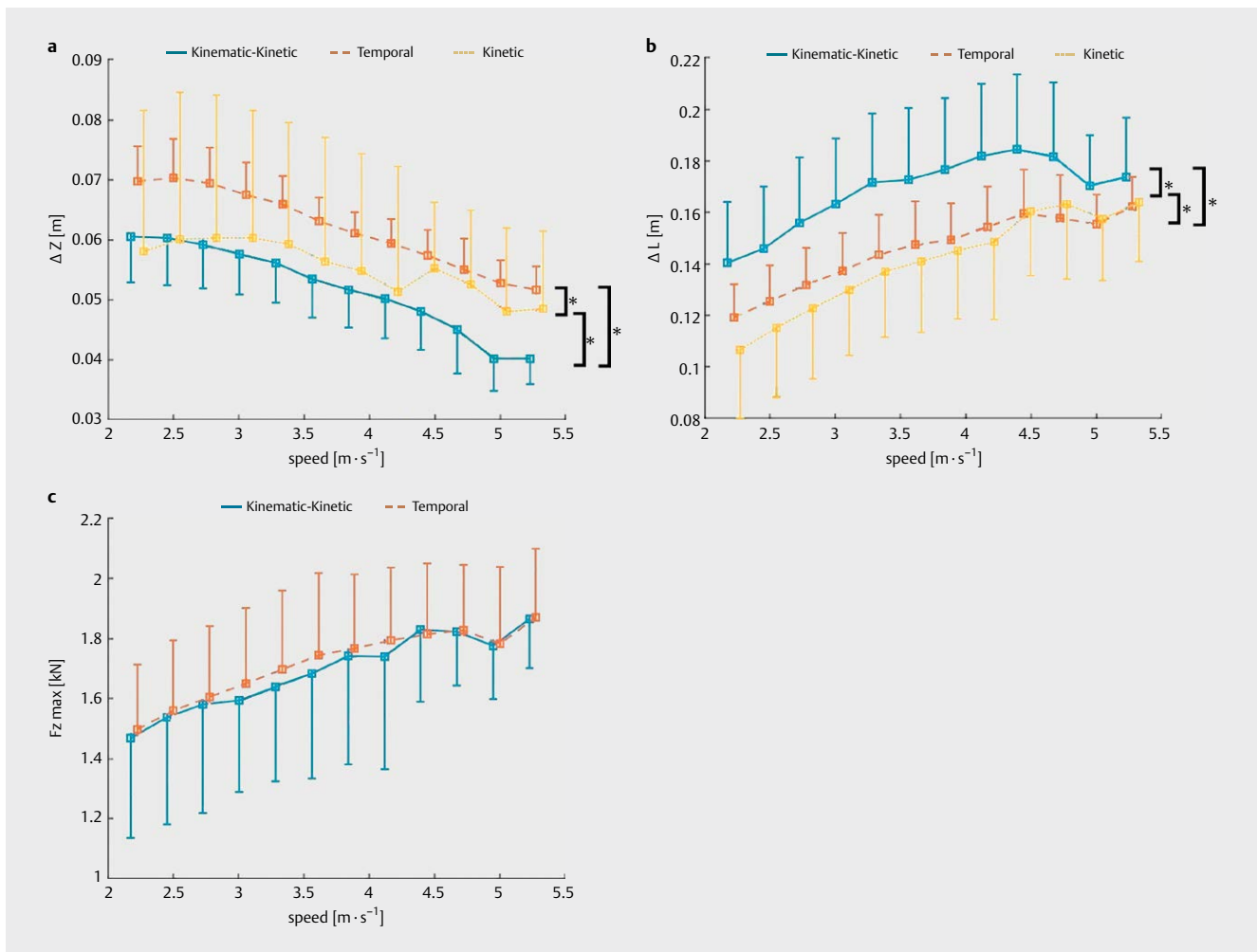
$$\Delta L = \min([L(IC), L(TC)]) - \min(L(t)) \text{ [m]}$$

Statistical analysis

Linear mixed models (LMM) were applied on the dependant variables Kvert, Kleg, ΔZ , ΔL and Fz_{max} obtained with the three methods, with a fixed effect on the method and on the slope as independent variables, and a random intercept effect on subjects. The Bonferroni pairwise comparison post-hoc test was then applied to identify differences between methods, slopes and speeds. All the statistical comparisons were obtained using Jamovi Software (Jamovi project 2020, Version 1.2, Sydney; Australia). The overall significance level was set at $p < 0.05$. The Cohen's coefficients f^2 were also presented to assess effect size. They were calculated based on the marginal coefficient of determination R^2 as proposed by Selya et al. [24]. Values of 0.02 and over are considered small, 0.15 medium and 0.35 large [25]. All data are expressed as mean \pm standard deviation (SD).



► **Fig. 1** a. Vertical stiffness given as a function of speed, calculated using a Temporal, Kinetic or Kinematic-Kinetic method. b. Leg stiffness given as a function of speed, calculated with either the Temporal, Kinetic or Kinematic-Kinetic method. *Significant difference between methods ($p < 0.05$).



► **Fig. 2** **a.** Vertical displacement of the center of mass (ΔZ) given as a function of speed, calculated with either the Kinematic-Kinetic, Temporal or Kinetic method. **b.** Leg length change (ΔL) given as a function of speed, calculated with either a Kinematic-Kinetic, Temporal or Kinetic method. **c.** Maximal vertical force ($F_{z\max}$) given as a function of speed, calculated with either the Kinematic-Kinetic, Temporal or Kinetic method. *Significant difference between methods ($p < 0.05$).

Results

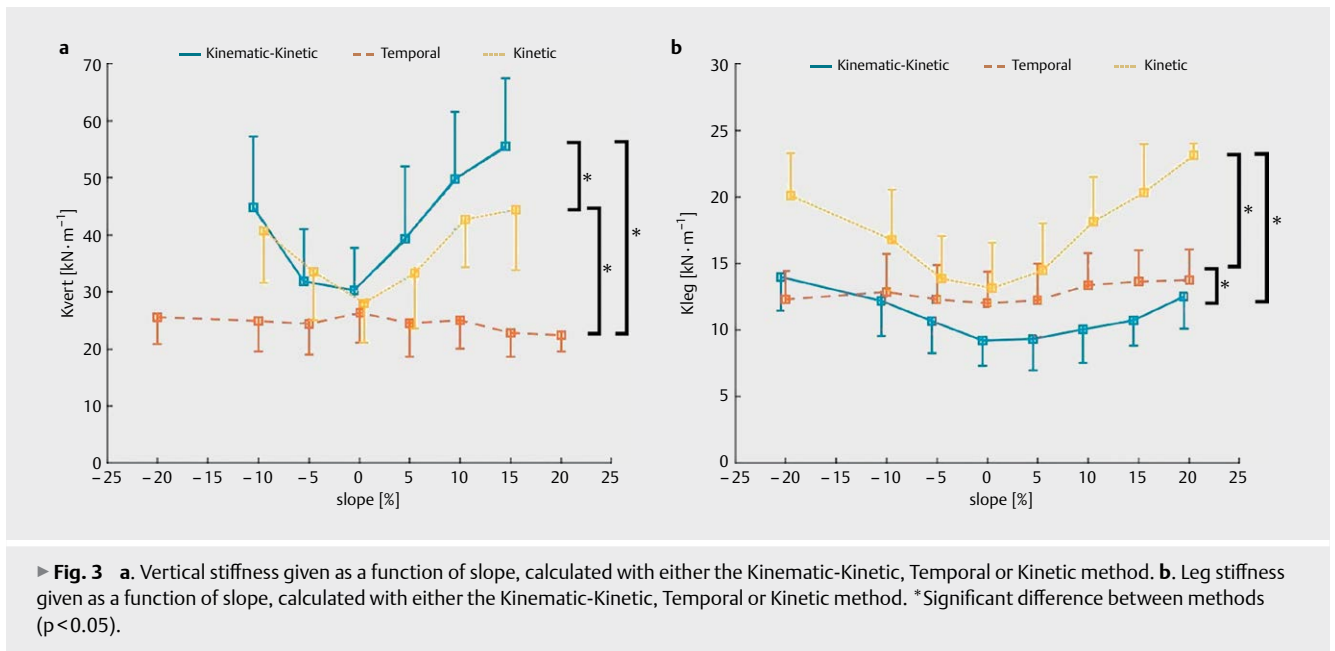
Effect of speed

For the determination of K_{vert} , the LMM showed a significant difference between methods ($p < 0.001$, $f^2 = 0.16$) (► **Fig. 1a**). The post-hoc indicated significant lower values in K_{vert} with the Temporal and Kinetic methods than with the Kinematic-Kinetic method (both $p < 0.001$), but not between Temporal and Kinetic ($p = 0.44$). Each method showed a significant increase of K_{vert} with increase of speed ($p < 0.001$, $f^2 = 0.65$).

The LMM highlighted significant differences between methods to assess K_{leg} ($p < 0.001$, $f^2 = 0.21$) (► **Fig. 1b**). The post-hoc showed lower values with Kinematic-Kinetic than with Kinetic as well as with Kinetic than Temporal (all $p < 0.001$) (► **Fig. 2**). With the increase of speed, the K_{leg} significantly decreased, but with a small effect size ($p < 0.001$, $f^2 = 0.04$).

Looking at the intrinsic parameters allowing to determine K_{leg} and K_{vert} , ΔZ values were significantly different between methods

($p < 0.001$, $f^2 = 0.10$) (► **Fig. 2a**). The pairwise comparison indicated significant higher values of ΔZ with Kinetic compared to Kinematic-Kinetic ($p = 0.008$), and for Temporal compared to both Kinetic and Kinematic-Kinetic (both $p < 0.001$). The effect of speed was also significant ($p < 0.001$, $f^2 = 0.17$), with a decrease of ΔZ with running speed increase. For ΔL , the LMM indicate a significant difference between methods ($p < 0.001$, $f^2 = 0.30$) (► **Fig. 2b**). The post-hoc comparison indicated significantly higher ΔL values with Kinematic-Kinetic compared to Temporal and Kinetic, and with Temporal than Kinetic (all $p < 0.001$). The running speed also had significant impact on ΔL ($p < 0.001$, $f^2 = 0.44$), with a positive correlation. Finally, the $F_{z\max}$ calculation using either a force plate or a model based on temporal parameters didn't show significant differences ($p = 0.065$) (► **Fig. 2c**). The $F_{z\max}$ significantly increased with the speed ($p < 0.001$, $f^2 = 0.13$)



Effect of slope

The determination of K_{vert} highlighted significant differences when using the three different methods ($p < 0.001$, $f^2 = 0.37$) (► **Fig. 3a**). K_{vert} with the Temporal method was significantly lower than with Kinematic-Kinetic or Kinetic (both $p < 0.001$), and with Kinetic than with Kinematic-Kinetic ($p = 0.04$). The slope also significantly impacted the calculation of the K_{vert} ($p < 0.001$, $f^2 = 0.18$). Both the Kinematic-Kinetic and the Kinetic methods did not provide valid K_{vert} values on extreme slopes (i. e. $\pm 20\%$) as K_{vert} reached infinite values on such slopes.

The K_{leg} was also significantly affected by the calculation method ($p < 0.001$, $f^2 = 0.42$) (► **Fig. 3b**), Pairwise comparison indicated higher K_{leg} values with the Kinetic method than Kinematic-Kinetic and Temporal (both $p < 0.001$) as well as with Temporal than Kinematic-Kinetic ($p < 0.001$). The slope also had a significant impact on the K_{leg} calculation ($p < 0.001$, $f^2 = 0.17$).

Looking at the intrinsic parameters allowing to determine K_{leg} and K_{vert} , ΔZ values were significantly different between methods ($p < 0.001$, $f^2 = 0.94$) (► **Fig. 4a**). The pairwise comparison indicated significant higher ΔZ values with the Temporal method compared to both Kinematic-Kinetic and Kinetic ($p < 0.001$), and higher ΔZ values with Kinematic-Kinetic compared to Kinetic ($p < 0.001$). The effect of slope was also significant ($p < 0.001$, $f^2 = 0.41$).

The LMM indicate a significant difference between methods ($p < 0.001$, $f^2 = 0.43$) (► **Fig. 4b**). The pairwise comparison indicated significantly higher ΔL values for Kinematic-Kinetic compared to both Temporal and Kinetic, as well as with Temporal than Kinetic (all $p < 0.001$). The slope also had significant impact on ΔL ($p < 0.001$, $f^2 = 0.20$). Finally, the $F_{z_{max}}$ calculation using either a force plate or a model based on temporal parameters showed significant differences but with a very low effect size ($p < 0.001$, $f^2 = 0.01$) (► **Fig. 4c**). The $F_{z_{max}}$ significantly decreased when the slope increased, with a low effect size ($p < 0.001$, $f^2 = 0.06$).

Discussion

The present study is the first to clearly report the boundaries in which the model based on temporal parameters proposed by Morin et al. [10] can be applied. As expected, the model based on spatio-temporal parameters is not valid on slopes, even at low inclines (5% uphill and 10% downhill). Interestingly, Snyder and Farley [26] found the same asymmetry in energy storage at slopes between a +3 and -3 degrees. In downhill running, the same amount of elastic energy was stored in the leg compared to level running, while significantly lower energy was stored during uphill running. The Kinetic and Kinematic-Kinetic models showed higher values in both K_{vert} and K_{leg} when slope increases (and decreases), whereas the Temporal method provides results that are constant and independent of the slope. The results obtained with the Kinetic and Kinematic-Kinetic models are consistent with the results of Dewolf et al. [17], as the stiffness increased on steeper slopes. Indeed, as the energy stored in a spring is equal to half of the spring coefficient times the square of the displacement of the spring, the stored value will reach zero when the displacement come close to zero. Therefore, previous studies that used the Temporal method to determine K_{vert} and K_{leg} on incline terrain are questionable [27, 28].

The present study highlighted also a constant K_{leg} on a large speed range, and the validity of the Temporal model for level running. The three methods used in our study provided consistent outcomes, but the Kinematic-Kinetic method gave lower values than the Temporal and the Kinetic methods. This is in line with previous reports that compared different method and highlighted the good behavior of Temporal method [22, 29] for different speeds. The Temporal and the Kinetic method provide similar values but lower K_{vert} values and higher K_{leg} values than with the Kinematic-Kinetic method. This difference is probably due to the calculation method of ΔZ and ΔL . These results are consistent with previously published work using the spring mass model [8–11], but differs with

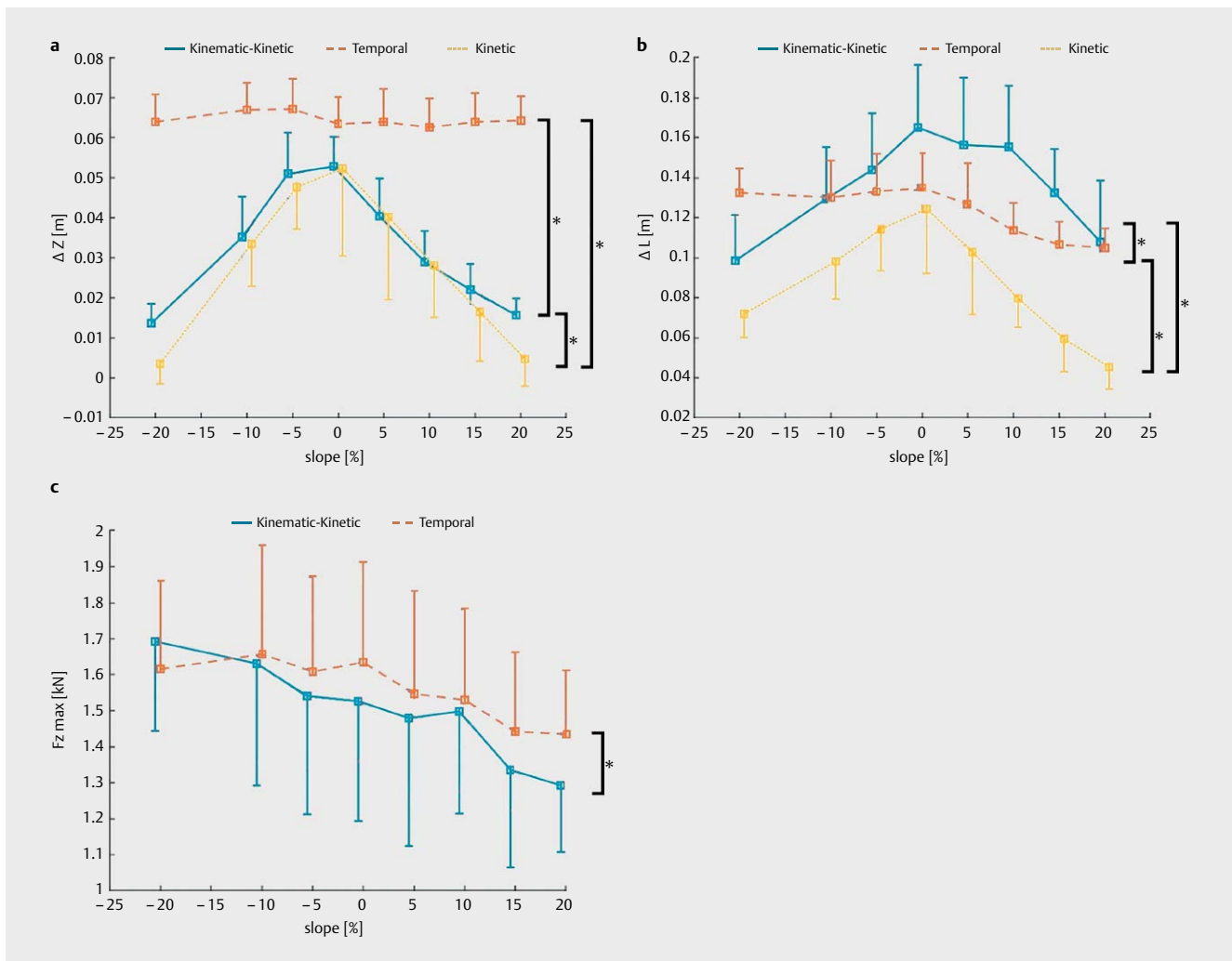


Fig. 4 a. Vertical displacement of the center of mass (ΔZ) given as a function of slope, calculated with either the Kinematic-Kinetic, Temporal or Kinetic method. b. Leg length change (ΔL) given as a function of slope, calculated using a Kinematic-Kinetic, Temporal or Kinetic method. c. Maximal vertical force ($F_{z\max}$) given as a function of slope, calculated with either the Kinematic-Kinetic, Temporal or Kinetic method. *Significant difference between methods ($p < 0.05$).

the indirect evidence found by Brughelli and Cronin [15] and with the study of Arampatzis et al. [12], that used a method similar to our Kinematic-Kinetic method. The difference seems to come from the calculation of the ΔL , that is constant in Arampatzis et al. [12], but increases with speed in our work.

With the speed range used in this study, we can assume the symmetry of the deceleration and acceleration phases. Nevertheless, the Kinematic-Kinetic method should be adapted to estimate the compression and the decompression of the spring with two different stiffness, as proposed by Clark and Weyand [30]. This method could probably provide more insights on the mechanisms involved when sprinting and explain the higher K_{leg} obtained at maximal speed [15].

Overall, this study confirms that errors may arise from different sources across running speeds or slopes: the indirect estimation of ΔZ and ΔL and the symmetry of acceleration and deceleration phases – known to be wrong – have different weight on the inaccuracy when comparing different speeds or different slopes. While we

argue that the assumption of the symmetry of land and take-off symmetry (known to be inexact) is an important source of inaccuracy, the derivation of the kinematics which drive the estimation of ΔZ and ΔL and consequently the differences in K_{vert} and K_{leg} is also an important limitation. Moreover, none of the models take into account the medial-lateral displacement estimated to be negligible [31].

Stiffness calculation and analysis is used both in research and by practitioners to gather useful information of athletes' physical state. It has been shown that both K_{vert} and K_{leg} are affected during marathon running [32, 33], providing insight about the accumulated fatigue. It is therefore important for coaches and researchers to understand the applicability and the limit of the calculation method, to make sure that their interpretation of the output is valid. As a consequence, the Temporal method [10] is perfectly adapted for level running, but should not be used in Trail or on slopes.

Conclusion

Using mathematical models is helpful to describe complex concepts, but caution is needed when applying these models. In this work, we analysed the range of application and the limits of different stiffness calculation methods. This study highlights that the assumption of symmetry between compression and decompression phases or the estimation of ΔZ and ΔL are the major sources of errors when comparing different speeds or different slopes.

Funding Information

Innosuisse – Schweizerische Agentur für Innovationsförderung – <http://dx.doi.org/10.13039/501100013348>; 32166.1

Conflict of Interest

The authors declare that they have no conflict of interest.

References

- [1] Cavagna GA, Saibene FP, Margaria R. Mechanical work in running. *J Appl Physiol* 1964; 19: 249–256
- [2] Vernillo G, Giandolini M, Edwards WB et al. Biomechanics and physiology of uphill and downhill running. *Sports Med* 2017; 47: 615–629
- [3] Alexander RM, Vernon A. The mechanics of hopping by kangaroos (Macropodidae). *J Zool* 1975; 177: 265–303
- [4] Cavagna GA, Thys H, Zamboni A. The sources of external work in level walking and running. *J Physiol* 1976; 262: 639–657
- [5] Cavagna GA, Franzetti P, Heglund NC et al. The determinants of the step frequency in running, trotting and hopping in man and other vertebrates. *J Physiol* 1988; 399: 81–92
- [6] Ito A, Komi PV, Sjödin B et al. Mechanical efficiency of positive work in running at different speeds. *Med Sci Sports Exerc* 1983; 15: 299–308. DOI:10.1249/00005768-198315040-00009
- [7] Blickhan R. The spring-mass model for running and hopping. *J Biomech* 1989; 22: 1217–1227
- [8] McMahon TA, Cheng GC. The mechanics of running: How does stiffness couple with speed. *J Biomech* 1990; 23: 65–78. DOI:10.1016/0021-9290(90)90042-2
- [9] Farley CT, González O. Leg stiffness and stride frequency in human running. *J Biomech* 1996; 29: 181–186. DOI:10.1016/0021-9290(95)00029-1
- [10] Morin JB, Dalleau G, Kyröläinen H et al. A simple method for measuring stiffness during running. *J Appl Biomech* 2005; 21: 167–180. DOI:10.1123/jab.21.2.167
- [11] He J, Kram R, McMahon TA. Mechanics of running under simulated low gravity. *J Appl Physiol* (1985) 1991; 71: 863–870. DOI:10.1152/jappl.1991.71.3.863
- [12] Arampatzis A, Brüggemann GP, Metzler V. The effect of speed on leg stiffness and joint kinetics in human running. *J Biomech* 1999; 32: 1349–1353. DOI:10.1016/S0021-9290(99)00133-5
- [13] Clauser CE, McConville JT, Young JW. Weight, volume, and center of mass of segments of the human body. *Natl Tech Inf Serv* 1969; 1–112. AMRL-TR- 69-70 (AD 710 622)
- [14] Hanavan EP. A mathematical model of the human body. *AMRL TR* 1964; 1–149
- [15] Brughelli M, Cronin J. A review of research on the mechanical stiffness in running and jumping: Methodology and implications. *Scand J Med Sci Sports* 2008; 18: 417–426
- [16] Dewolf AH, Ivanenko Y, Zelik KE et al. Kinematic patterns while walking on a slope at different speeds. *J Appl Physiol* (1985) 2018; 125: 642–653
- [17] Dewolf AH, Peñailillo LE, Willems PA. The rebound of the body during uphill and downhill running at different speeds. *J Exp Biol* 2016; 219: 2276–2288. DOI:10.1242/jeb.142976
- [18] Minetti AE, Ardigo LP, Saibene F. Mechanical determinants of the minimum energy cost of gradient running in humans. *J Exp Biol* 1994; 195: 211–225
- [19] Falbriard M, Meyer F, Mariani B et al. Accurate estimation of running temporal parameters using foot-worn inertial sensors. *Front Physiol* 2018; 9: 610. DOI:10.3389/fphys.2018.00610
- [20] Winter DA. A new definition of mechanical work done in human movement. *J Appl Physiol Respir Environ Exerc Physiol* 1979; 46: 79–83. DOI:10.1152/jappl.1979.46.1.79
- [21] Cavagna GA. Force platforms as ergometers. *J Appl Physiol* 1975; 39: 174–179
- [22] Coleman DR, Cannavan D, Horne S et al. Leg stiffness in human running: Comparison of estimates derived from previously published models to direct kinematic-kinetic measures. *J Biomech* 2012; 45: 1987–1991. DOI:10.1016/j.jbiomech.2012.05.010
- [23] Liew BXW, Morris S, Masters A et al. A comparison and update of direct kinematic-kinetic models of leg stiffness in human running. *J Biomech* 2017; 64: 253–257. DOI:10.1016/j.jbiomech.2017.09.028
- [24] Selya AS, Rose JS, Dierker LC et al. A practical guide to calculating Cohen's f^2 , a measure of local effect size, from PROC MIXED. *Front Psychol* 2012; 3: 111. DOI:10.3389/fpsyg.2012.00111
- [25] Cohen J. A power primer. *Psychol Bull* 1992; 112: 155–159. DOI:10.1037/0033-2909.112.1.155
- [26] Snyder KL, Farley CT. Energetically optimal stride frequency in running: the effects of incline and decline. *J Exp Biol* 2011; 214: 2089–2095. DOI:10.1242/jeb.053157
- [27] Lussiana T, Hébert-Losier K, Mourot L. Effect of minimal shoes and slope on vertical and leg stiffness during running. *J Sport Health Sci* 2015; 4: 195–202. DOI:10.1016/j.jshs.2013.09.004
- [28] García-Pinillos F, Latorre-Román P, Ramírez-Campillo R et al. How does the slope gradient affect spatiotemporal parameters during running? Influence of athletic level and vertical and leg stiffness. *Gait Posture* 2019; 68: 72–77. DOI:10.1016/j.gaitpost.2018.11.008
- [29] Blum Y, Lipfert SW, Seyfarth A. Effective leg stiffness in running. *J Biomech* 2009; 42: 2400–2405. DOI:10.1016/j.jbiomech.2009.06.040
- [30] Clark KP, Weyand PG. Are running speeds maximized with simple-spring stance mechanics? *J Appl Physiol* (1985) 2014; 117: 604–615
- [31] Liew BXW, Morris S, Masters A et al. A comparison and update of direct kinematic-kinetic models of leg stiffness in human running. *J Biomech* 2017; 64: 253–257. DOI:10.1016/j.jbiomech.2017.09.028
- [32] Meyer F, Falbriard M, Mariani B et al. Continuous analysis of marathon running using inertial sensors: hitting two walls? *Int J Sports Med* 2021; 42: 1182–1190. DOI:10.1055/a-1432-2336
- [33] Prigent G, Apte S, Paraschiv-Ionescu A et al. Concurrent evolution of biomechanical and physiological parameters with running-induced acute fatigue. *Front Physiol* 2022; 13: 814172. DOI:10.3389/fphys.2022.814172