



UNIL | Université de Lausanne

Unicentre

CH-1015 Lausanne

<http://serval.unil.ch>

Year : 2023

Risk Factors for Early Hospital Readmission in Geriatric Patients: A Systematic Review

Cilla Francesco

Cilla Francesco, 2023, Risk Factors for Early Hospital Readmission in Geriatric Patients: A Systematic Review

Originally published at : Thesis, University of Lausanne

Posted at the University of Lausanne Open Archive <http://serval.unil.ch>

Document URN : urn:nbn:ch:serval-BIB_552F449C46BD6

Droits d'auteur

L'Université de Lausanne attire expressément l'attention des utilisateurs sur le fait que tous les documents publiés dans l'Archive SERVAL sont protégés par le droit d'auteur, conformément à la loi fédérale sur le droit d'auteur et les droits voisins (LDA). A ce titre, il est indispensable d'obtenir le consentement préalable de l'auteur et/ou de l'éditeur avant toute utilisation d'une oeuvre ou d'une partie d'une oeuvre ne relevant pas d'une utilisation à des fins personnelles au sens de la LDA (art. 19, al. 1 lettre a). A défaut, tout contrevenant s'expose aux sanctions prévues par cette loi. Nous déclinons toute responsabilité en la matière.

Copyright

The University of Lausanne expressly draws the attention of users to the fact that all documents published in the SERVAL Archive are protected by copyright in accordance with federal law on copyright and similar rights (LDA). Accordingly it is indispensable to obtain prior consent from the author and/or publisher before any use of a work or part of a work for purposes other than personal use within the meaning of LDA (art. 19, para. 1 letter a). Failure to do so will expose offenders to the sanctions laid down by this law. We accept no liability in this respect.

UNIVERSITE DE LAUSANNE - FACULTE DE BIOLOGIE ET DE MEDECINE

**Département de médecine
SERVICE DE GÉRIATRIE ET RÉADAPTATION GÉRIATRIQUE**

**Risk Factors for Early Hospital Readmission in Geriatric Patients: A
Systematic Review**

THESE

préparée sous la direction de Professeure Patrizia D'Amelio
(avec la collaboration du Docteur Ilaria Sabione)

et présentée à la Faculté de biologie et de médecine de
l'Université de Lausanne pour l'obtention du grade de

DOCTEUR EN MEDECINE

par

Francesco CILLA

Médecin diplômé en Italie
Originaire de Moncalieri (Italie)

Lausanne
2023

IMPRIMATUR

La Faculté de biologie et médecine de l'Université de Lausanne, sur proposition du jury, autorise l'impression de la thèse de doctorat rédigée par

Francesco Cilla

intitulée

***Risk Factors for Early Hospital Readmission
in Geriatric Patients: A Systematic Review***

sans se prononcer sur les opinions exprimées dans cette thèse.

Directrice	Professeure Patrizia D'amelio
Expert interne	Docteur Cédric Mabire
Vice-directeur de l'Ecole doctorale	Professeur John Prior

Lausanne, le 09.05.2023



pour Le Doyen
de la Faculté de Biologie et de Médecine

Monsieur le Professeur John Prior
Vice-Directeur de l'Ecole doctorale

Risk factors for early hospital readmission in geriatric patients: a systematic review.

Francesco Cilla¹, Ilaria Sabione¹, Patrizia D'Amelio¹

¹ Service of Geriatric Medicine and Geriatric Rehabilitation, CHUV, Centre Hospitalier Universitaire Vaudois, Lausanne.

*Correspondences: Francesco.Cilla@chuv.ch, Ilaria.Sabione@chuv.ch, Patrizia.DAmelio@chuv.ch

Le nombre de patients âgés est en constante augmentation et les réadmissions précoces à l'hôpital dans cette population représentent un problème majeur d'un point de vue sanitaire, social et économique. En outre, le taux de réadmission précoce est souvent utilisé comme indicateur de la qualité des soins.

Selon la littérature, le taux de réadmission varie en fonction de la population étudiée, de la zone géographique et des services examinés. Le rôle de la fragilité et, en particulier, de la sarcopénie dans les taux de réadmission précoces n'est actuellement pas clair.

L'objectif de cette revue systématique est de mettre à jour les données existantes sur ce sujet en identifiant les facteurs de risque des réadmissions précoces (30 et 90 jours) chez les patients gériatriques hospitalisés dans des unités médicales.

La recherche a été effectuée dans les bases de données MEDLINE, EMBASE et PsycINFO. Seules les études publiées au cours de la dernière décennie ont été retenues.

Trois reviseurs indépendants ont évalué l'inclusion potentielle des études, puis chaque étude a été évaluée indépendamment par deux reviseurs à l'aide des outils d'évaluation critique de l'Institut Joanna Briggs ; toute divergence a été résolue par le troisième reviseur. Les études qui incluaient des patients hospitalisés dans des services de chirurgie ont été exclues. Vingt-neuf études ont été incluses dans la revue.

Selon les résultats de notre étude, les facteurs de risque de réadmission précoce peuvent être classés en facteurs socio-économiques, facteurs liés aux caractéristiques de santé du patient, facteurs liés à l'utilisation du système de soins de santé et facteurs cliniques. Parmi ces facteurs de risque, ceux liés à la fragilité du patient jouent un rôle important, en particulier la malnutrition, la mobilité réduite, le risque de chute, la fatigue et la dépendance fonctionnelle.

Ce résultat est d'une importance capitale car ces conditions sont modifiables et doivent être prises en compte dans l'évaluation et le traitement des patients. L'identification précoce des patients présentant un risque élevé de réadmission précoce peut permettre des interventions ciblées en vue de la sortie.

Une prise en charge nutritionnelle attentive et une mobilisation précoce pendant l'hospitalisation sont donc des mesures peu coûteuses qui peuvent conduire à une réduction du taux de réadmission avec une amélioration significative de la qualité de vie des patients et une réduction des coûts de santé.

Au vue de l'hétérogénéité des études inclus dans cette revue, du fait que seulement un petit nombre a été effectuée dans un service de gériatrie aiguë et du fait que les réadmissions n'ont pas toujours été relevées dans une manière uniforme, les auteurs estiment qu'il y a encore de la place pour d'autres études expérimentales avec des résultats clairs sur la réadmission précoce et non planifiée chez les patients hospitalisés en gériatrie aiguë.



Systematic Review

Risk Factors for Early Hospital Readmission in Geriatric Patients: A Systematic Review

Francesco Cilla * , Ilaria Sabione and Patrizia D'Amelio

Service of Geriatric Medicine and Geriatric Rehabilitation, Centre Hospitalier Universitaire Vaudois (CHUV),
Route de Mont Pailable 16, 1011 Lausanne, Switzerland

* Correspondence: francesco.cilla@chuv.ch

Abstract: The number of older patients is constantly growing, and early hospital readmissions in this population represent a major problem from a health, social and economic point of view. Furthermore, the early readmission rate is often used as an indicator of the quality of care. We performed a systematic review of the literature to better understand the risk factors of early readmission (30 and 90 days) in the geriatric population and to update the existing evidence on this subject. The search was carried out on the MEDLINE, EMBASE and PsycINFO databases. Three independent reviewers assessed the potential inclusion of the studies, and then each study was independently assessed by two reviewers using Joanna Briggs Institute critical appraisal tools; any discrepancies were resolved by the third reviewer. Studies that included inpatients in surgical wards were excluded. Twenty-nine studies were included in the review. Risk factors of early readmission can be classified into socio-economic factors, factors relating to the patient's health characteristics, factors related to the use of the healthcare system and clinical factors. Among these risk factors, those linked to patient frailty play an important role, in particular malnutrition, reduced mobility, risk of falls, fatigue and functional dependence. The early identification of patients at higher risk of early readmission may allow for targeted interventions in view of discharge.

Keywords: geriatrics; early readmission; risk factors



Citation: Cilla, F.; Sabione, I.; D'Amelio, P. Risk Factors for Early Hospital Readmission in Geriatric Patients: A Systematic Review. *Int. J. Environ. Res. Public Health* **2023**, *20*, 1674. <https://doi.org/10.3390/ijerph20031674>

Academic Editors: Marta Muszalik, Mateusz Cybulski and Grażyna Puto

Received: 12 December 2022

Revised: 9 January 2023

Accepted: 16 January 2023

Published: 17 January 2023



Copyright: © 2023 by the authors. Licensee MDPI, Basel, Switzerland. This article is an open access article distributed under the terms and conditions of the Creative Commons Attribution (CC BY) license (<https://creativecommons.org/licenses/by/4.0/>).

1. Introduction

The older population is continuously growing increasing public health challenges. According to statistics from the Report on the State of World Population, in 2050, one out of six persons in the world (one out of four in Europe and North America) will be over 65 (16%), compared to one in eleven in 2019 (9%). The number of adults aged 80 years or over is expected to triple, from 143 million in 2019 to 426 million in 2050 [1].

In this global context, the control of health costs and the efficiency of care represent two of the most important challenges for the upcoming years. For this reason, hospitals and healthcare systems have undertaken several initiatives to limit healthcare costs, including reducing the average length of stay, centralising acute care to optimise resources and reducing bed use [2].

Early unscheduled readmission represents a major problem among older adults from a health, social and financial point of view [3]. Hence, readmission rates are frequently used as indicators of the quality of hospital care [4].

According to different studies, the readmission rate 1 month after hospital discharge varies between 7.3 and 32.7% [5–7], depending on the population included, the geographical areas and the different departments examined [8,9]. Different studies focused on different outcomes: all readmissions [10], unplanned readmissions [11], or avoidable readmissions [12].

Potentially avoidable readmissions are a serious burden for patients and caregivers and cause increased healthcare costs [3,13,14]. The clear identification of factors predictive

of early readmission may enable the implementation of appropriate interventions to obtain significant reductions in readmission rates to hospitals for older patients [15–17].

Indeed, in the United States, discharge plans and strict follow-up for patients at high risk of readmission are effective in reducing the rehospitalisation rate at 30 days [18,19].

Several studies have been published on this topic in the past years; the systematic review by Pedersen et al. [20] suggests that socio-demographic risk factors, as well as organisational factors and clinical factors, may be regarded as predictors of early readmissions. However, due to the high degree of heterogeneity between different studies included in the review, the authors suggest caution in the interpretation of the results [20].

The aim of this systematic review is to update the existing evidence on this topic identifying the risk factors for early readmissions in geriatric patients hospitalised in medical units.

2. Materials and Methods

2.1. Eligibility Criteria

Studies included in this systematic review answered the research question structured by the following Participants' Intervention (PI), Exposure Comparator Outcomes (ECO) format:

Participants: older adults aged 65 years and older were readmitted to hospital within 30 or 90 days after discharge (defined as early readmission). We excluded studies on patients discharged from psychiatric, surgical, rehabilitation or palliative units and patients transferred to rehabilitation.

Interventions/exposures:

- Socio-demographic characteristics and socioeconomic determinants;
- Health factors;
- Healthcare utilisation;
- Clinical factors.

Comparator: older adults aged 65 years and older without early re-hospitalisation.

Outcomes: 30 or 90 days readmission to hospital.

2.2. Study Design

We included peer-reviewed observational and intervention studies, clinical trials, prospective and retrospective controlled cohort studies and case-controlled studies written in English. Only studies published in the past decade were included (from 1 January 2012 to 31 January 2022).

We excluded studies limited to patients with specific diseases such as heart attack, dementia, pneumonia etc., case reports and narrative reviews.

2.3. Information Source and Search Strategy

We carried out this systematic review in agreement with the Preferred Reporting Items for Systematic Reviews and Meta-Analysis (PRISMA, the PRISMA checklist is reported in Appendix A). The protocol of this study is available on the International prospective register of systematic reviews (PROSPERO, number CRD42021292496, https://www.crd.york.ac.uk/prospero/display_record.php?RecordID=292496) (accessed on 30 November 2021). The MEDLINE, EMBASE and PsycINFO databases were searched for relevant studies using the following terms: (“Aged” [Mesh] OR “Geriatrics” [Mesh]) AND “Patient Readmission” [Mesh] AND “Risk Factors” [Mesh] NOT “Surgery” [MeSH Terms]). The search strategy is publicly available at https://pubmed.ncbi.nlm.nih.gov/?term=%28%22Aged%22%5BMesh%5D+OR+%22Geriatrics%22%5BMesh%5D%29+AND+%22Patient+Readmission%22%5BMesh%5D+AND+%22Risk+Factors%22%5BMesh%5D+NOT+Surgery%5BMeSH+Terms%5D&filter=dates.2012%2F1%2F1-2022%2F1%2F31&filter=hum_ani.humans&filter=lang.english&filter=age.aged&size=200 (accessed on 1 February 2022) for PubMed, (“aged”/exp OR “geriatrics”/exp) AND “patient readmission”/exp AND “risk factors”/exp NOT “surgery”/exp AND [01-01-2012]/sd NOT [01-02-2022]/sd AND [english]/lim” for EMBASE and

“MeSH: geriatrics OR MeSH: old AND MeSH: patient readmission AND MeSH: risk factors NOT MeSH: surgery AND PsycInfo Classification: 2860 Gerontology for PsycINFO”.

The final search was done on 1 February 2022.

2.4. Study Selection

Two reviewers, working independently, screened the studies retrieved by the search according to the inclusion/exclusion criteria. Two reviewers independently evaluated the inclusion of each study; discrepancies between the two reviewers were solved by the third. The Rayyan[®] tool (a web tool designed to help researchers working on systematic reviews available at Rayyan—Intelligent Systematic Review—Rayyan) was used to speed up the article selection process. All the papers retrieved by the search responding to inclusion/exclusion criteria were included; biases were evaluated for each article and noted in a dedicated database. In 17 studies [10,21–36], the corresponding author was contacted for further information. Only 10 authors [10,21,22,25,27–31,33] sent the requested information. None of the studies for which we did not receive the requested additional information were excluded; however, the quality assessment for these studies was incomplete [23,32,34,35].

2.5. Data Extraction and Analysis

Three thousand and twenty-one articles were retrieved by the search strategy: 1491 from EMBASE + 1410 from PubMed + 120 from PsycINFO. After removing the duplicates, we retained 2532 articles for the systematic revision. We excluded 2139 articles for violation of inclusion criteria. Hence, 393 full-text articles were reviewed as previously described. After reading the full-text article, 364 articles were excluded due to the following reasons: wrong study population ($n = 193$), wrong outcome ($n = 121$) or full paper non-available ($n = 50$). Twenty-nine articles were included in the Review (Figure 1).

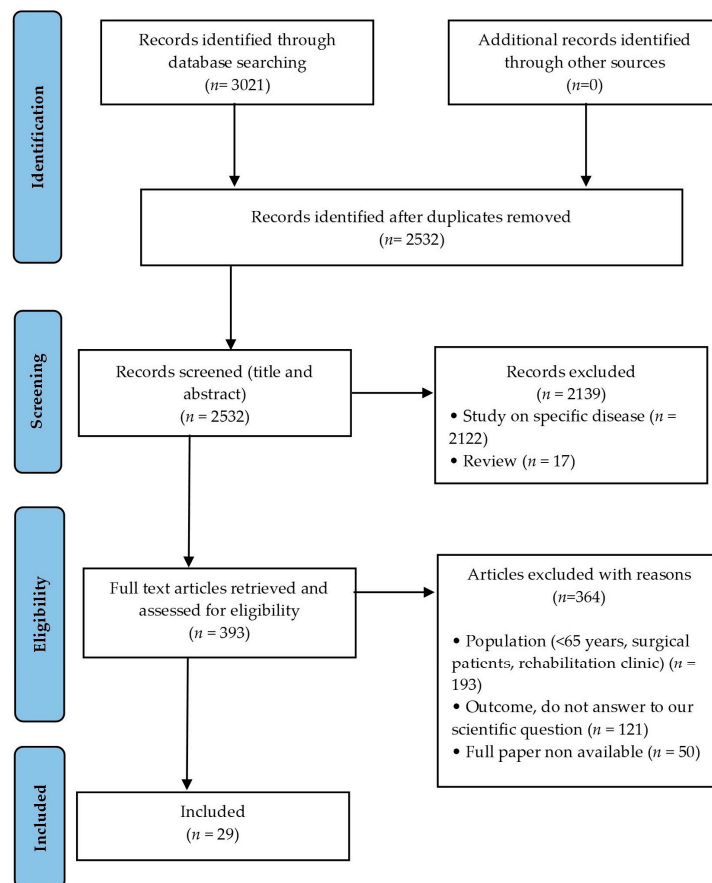


Figure 1. Flowchart of the study selection process.

From each study, 2 reviewers extracted: publication year, design of the study and analytic model, participants number, mean age, gender, number of readmitted patients, rate of readmission, duration of the follow-up, data sources, clinical setting, main outcomes, variables analysed and predictors of readmission identified.

2.6. Quality Assessment

The quality of the studies was assessed by the standardised Joanna Briggs Institute (JBI) critical appraisal tools [37]: JBI Critical Appraisal Checklist for case-control studies, JBI Critical Appraisal Checklist for cohort studies and JBI Critical Appraisal Checklist for quasi-experimental studies were used.

Two reviewers independently evaluated the quality of each study; discrepancies between the two reviewers were solved by discussion and consensus among reviewers or by the third reviewer. The quality across studies was assessed using a graphic representation of the percentage of studies with a strong, moderate or weak rating for each section considered in the evaluation of the quality of individual studies.

3. Results

3.1. Study Design and Characteristics

Twenty-nine studies published between 2012 and 2022 were included in the review [3,10–12,21–23,27–36,38–49]. The participants included in the different studies ranged between 111 [41] and 1,463,781 [27], with a total number of patients included in the review of 3,859,134. The majority of the included studies were retrospective cohort studies [3,12,21,27,31,33,34,36,42–44,46–49], nine were prospective cohort studies [10,22,23,29,30,35,38,40,41], four were case-control studies [11,28,32,45] and one was a quasi-experimental study [39]. Eighteen studies were monocentric [12,21–23,28–31,33–36,39–41,43,45,48] and 11 were multicentric [3,10,11,27,32,38,42,44,46,47,49]. Twelve were conducted in Europe [10,12,21,27,28,30,31,35,38,43,46,48], nine in the USA [22,29,32,34,40–42,44,49], five in Asia/Middle East [23,33,36,39,47] and three in Australia [3,11,45]. Nineteen studies [3,10–12,22,23,27,31,33,35,36,38–44,48] presented results according to multivariate analysis.

The study design of each study is detailed in Supplemental Table S1.

3.2. Study Population

The minimum age for patients' inclusion differs amongst different studies; however, all the studies reported an average age of at least 65 years.

Eleven studies [3,10,11,22,29,30,41,44,45,47,48] included only patients aged 65 or older, one study [40] included patients aged 55 or older, one study [23] included patients aged 60 or older, two studies [21,38] included patients aged 70 or older and two studies [34,35] included patients aged 75 years or older.

Nine studies [12,27,28,32,33,36,42,46,49] included patients of all ages, with a mean age of 65 years. Finally, the age of inclusion is not mentioned in three studies [31,39,43]; nevertheless, patients enrolled were admitted to a geriatric ward. The characteristics of the population included in the different studies are detailed in Supplemental Table S1.

3.3. Risk Factors for Early Hospital Readmission

The incidence rates of readmission (both unplanned and for any cause) within 30 days ranged from 10.3% [3] to 37.6% [23], while the rates within 90 days ranged from 16% [21] to 58% [47].

Here, we take into account risk factors for readmission at 30 or 90 days according to the definition of early readmission in literature [10,12,28,30,38,42,48,50,51]. Twenty-three studies [12,22,23,27–36,39–46,48,49] investigated the risk factors of readmission at 30 days, three studies at 90 days [10,21,47] and three studies [3,11,38] at 30 and 90 days.

The risk factors for readmission highlighted by the studies included in this review can be classified into four categories: socio-demographic and socio-economic factors, health factors, healthcare utilization and clinical factors.

Fifteen studies [10–12,23,29–31,36,38,39,41,45–47,49] analysed all four groups of exposure, while six studies [3,21,22,27,32,34] considered only one group of exposure.

The majority of the studies identified as risk factors for early readmission older age [3,28,33,47], male gender [3,30,46], a poor socio-economic status [3,30,40,42,45], malnutrition [21,23,38,46], multi-morbidity [11,12,27,30,31,36,39,40,45,49], liver diseases [10,46,49], heart failure [28,33,44,47,49], anaemia [36,46,48], recent hospitalisation [10,12,45] and longer hospital length of stay [12,30,36,46,49].

Different risk factors of readmission are detailed in Table S1 and Figure 2.

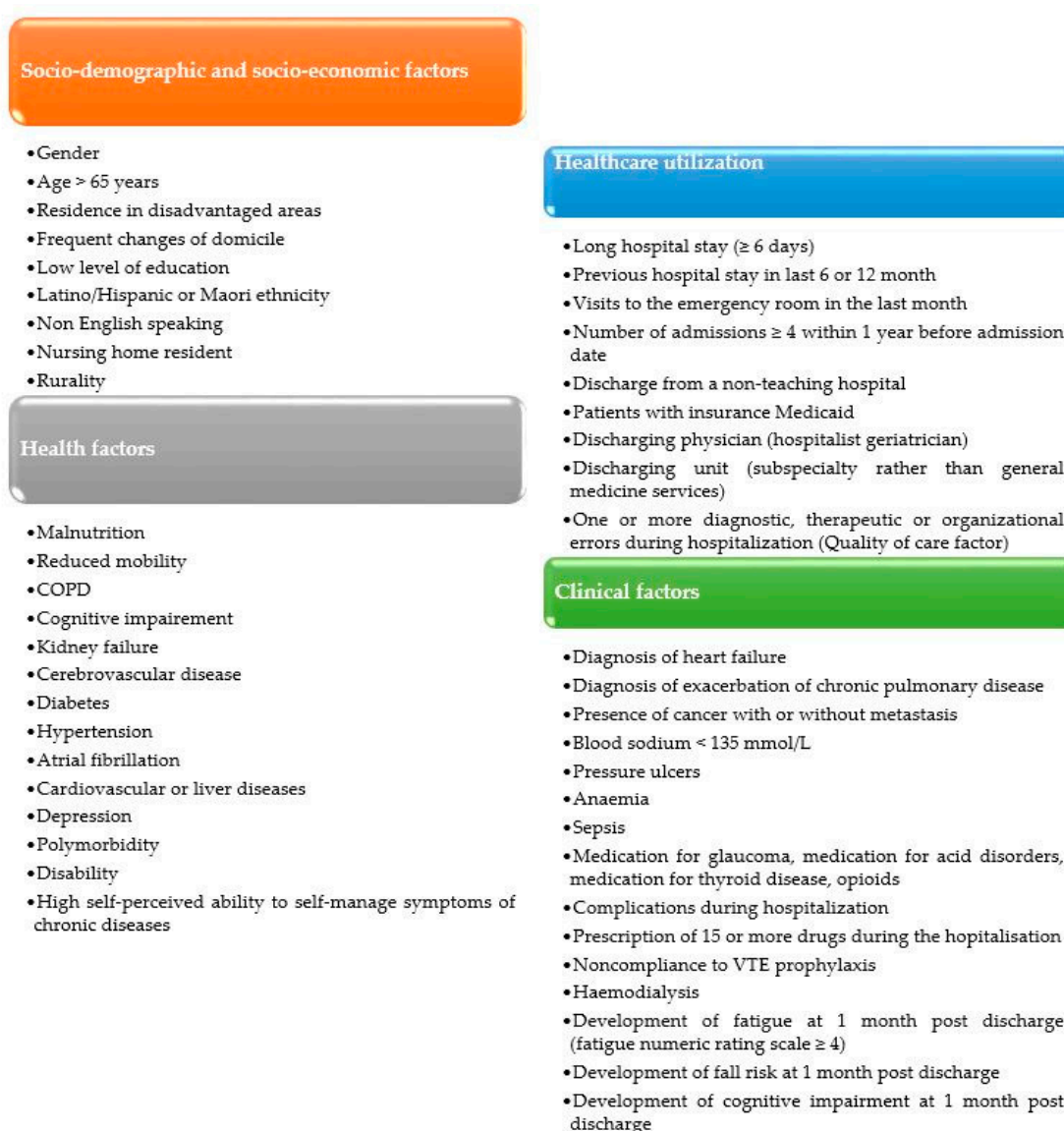


Figure 2. Risk factors for early hospital readmission.

3.4. Quality Assessment

The results of the critical appraisal process are reported in Figure 3. Among the included studies, Fitriana et al. [23] and Wang–Hansen et al. [35] received the highest score (9 points), while Ben–Chetrit et al. [47] and Scott et al. [45] received the lowest score (3 points).

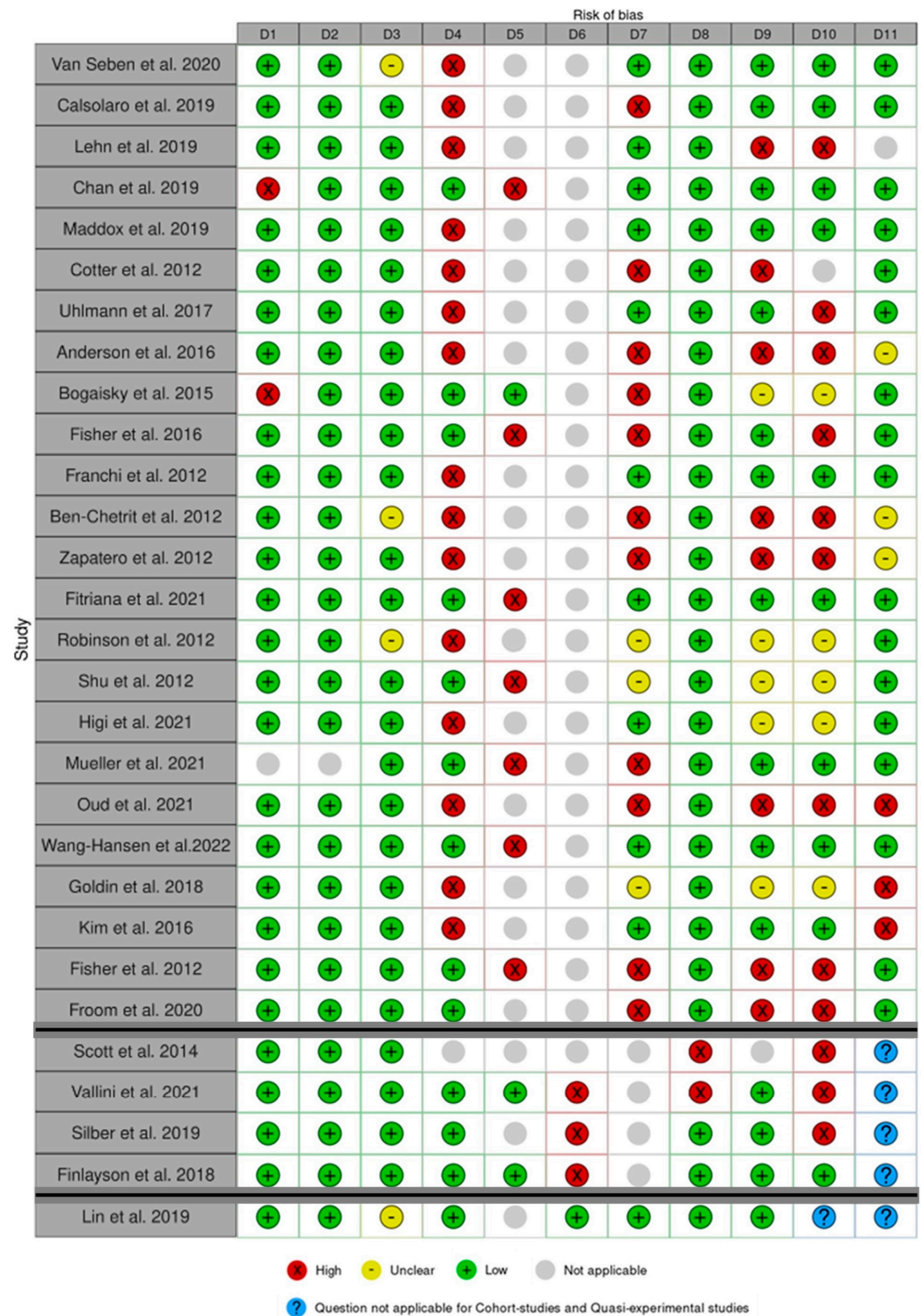
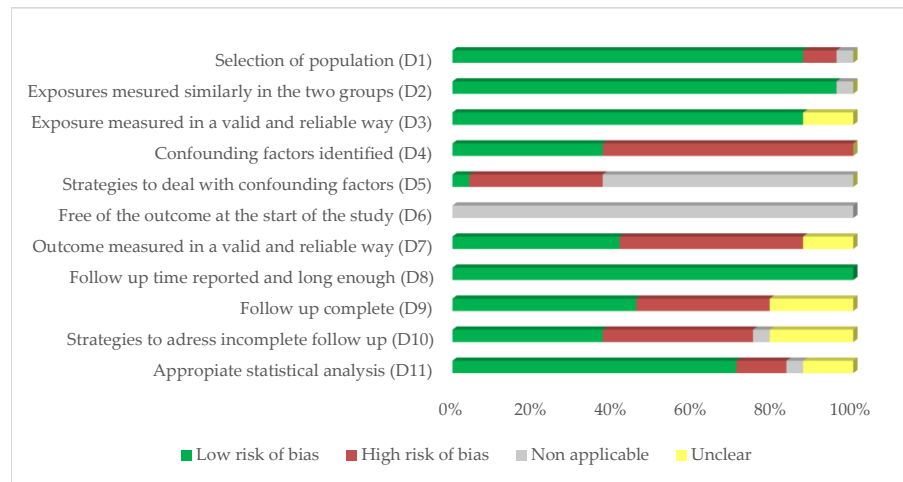


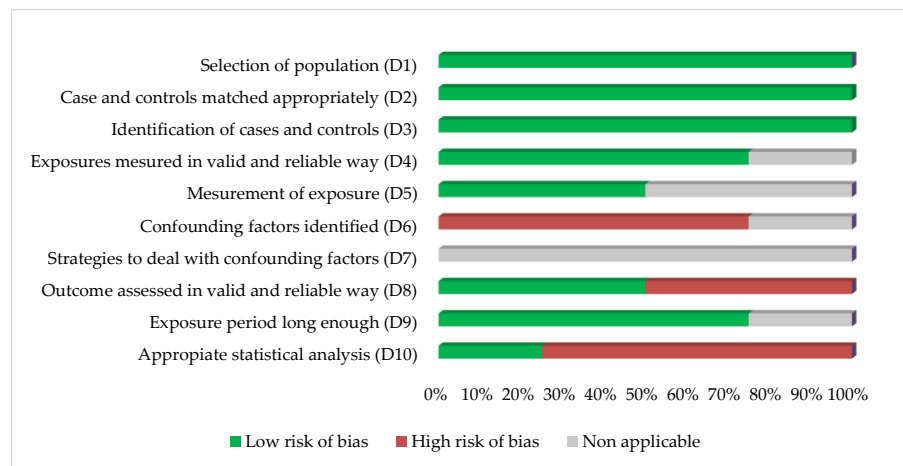
Figure 3. Quality assessment for cohort studies in the first part, case-control studies in the second part and quasi-experimental studies in the third part. The Robvis Tool[®] [52] was used for this figure. Van Seben et al. 2020 [38], Calsolaro et al. 2019 [31], Lehn et al. 2019 [30], Chan et al. 2019 [40], Maddox et al. 2019 [42], Cotter et al. 2012 [43], Uhlmann et al. 2017 [12], Anderson et al. 2016 [29], Bogaisky et al. 2015 [44], Fisher et al. 2016 [22], Franchi et al. 2012 [10], Ben-Chetrit et al. 2012 [47], Zapatero et al. 2012 [46], Fitriana et al. 2021 [23], Robinson et al. 2012 [3], Shu et al. 2012 [36], Higi et al. 2021 [48], Mueller et al. 2021 [27], Oud et al. 2021 [21], Wang-Hansen et al. 2022 [35], Goldin et al. 2018 [34], Kim et al. 2016 [49], Fisher et al. 2012 [41], Froom et al. 2020 [33], Scott et al. 2014 [45], Vallini et al. 2021 [28], Silber et al. 2019 [32], Finlayson et al. 2018 [11], Lin et al. 2019 [39].

D1–D11 are detailed in JBI Critical appraisal checklist [37] for cohort studies [3, 10,12,21–23,27,29–31,33–36,38,40–44,46–49], case-control studies [11,28,32,45] and quasi-experimental studies [39]).

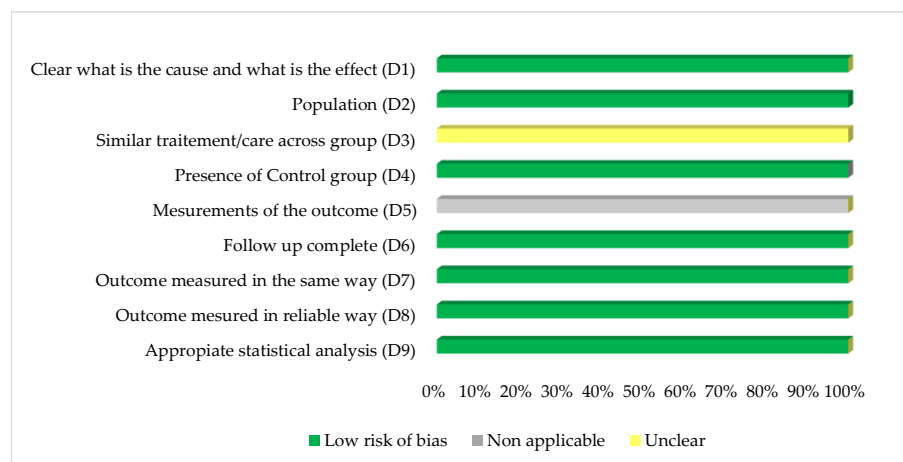
The global quality assessment across the studies is presented in Figure 4.



(a)



(b)



(c)

Figure 4. The global quality assessment across the studies for cohort studies (a), case-control studies (b), and quasi-experimental studies (c).

We highlight that the item “Outcome measured in a standard, valid and reliable way” (D7 for Cohort studies and D8 for case-control studies and quasi-experimental studies) has a high risk of bias in the cohort studies (only 42% of the studies [10,12,23,30,35,38,40,42,48,49] have a low risk of bias) and in the case-control studies (only 50% of the studies [11,32] with a low risk of bias). This result is explained by the attribution of the “high risk of bias” category to studies that included readmissions only in the same units of index hospitalisation; this potentially leads to an underestimation of the outcomes.

Regarding the item “Follow-Up complete” (D9 for Cohort studies) in the Cohort studies, a high risk of bias was attributed if the authors did not have information on non-readmitted patients (who could potentially be dead or hospitalised elsewhere). According to these criteria, only 45% of the cohort studies [10,12,22,23,27,31,35,38,40,42,49] have a complete follow-up.

In 20% [21,28,32,34,45,49], the statistical analysis (D11 for cohort studies, D10 for case-control studies and D9 for quasi-experimental studies) was not appropriate, given the absence of multivariate analysis on risk factors for readmission. For 10% [29,46,47] is unclear if an appropriate statistical analysis was performed.

4. Discussion

The aim of this review is to broadly evaluate the risk factors for early hospital readmission in geriatric patients; with this aim, we included very heterogeneous studies. The studies included widely differed in design, setting and data collection methods and were carried out in different countries with different cultures, health systems and economic situations.

In addition, the definition of early readmission differs amongst the studies as readmission for any causes is included in 14 studies [10,21,27,29,30,32–36,43,44,47,49], only unplanned readmissions in 12 studies [3,11,22,23,28,38–42,45,46] and potentially avoidable readmissions in three studies [12,31,48]. Taking into account that both planned and unplanned readmission potentially overestimate the readmission rate, however, the definition chosen by different authors was not included in the quality assessment as it depends on the declared study’s outcome.

Despite this heterogeneity, this review allows us to synthesise and update the knowledge on risk factors associated with early readmissions. According to the included studies, we classified risk factors for early readmission into four categories: socio-demographic and socio-economic factors, health factors, healthcare utilisation and clinical factors related to the index admission.

The incidence rates of readmission (unplanned readmissions or any causes of readmissions) vary markedly between different studies [3,21,23,47]. These variations have already been highlighted by previous systematic reviews [8,20] and may be due to different populations, countries’ health system differences and the different definitions adopted for early readmission.

Regarding the socio-demographic and socio-economic factors, our review highlights contrasting results. Older age [3,28,33,47] and male gender [3,30,46] were found to be associated with an increased risk of early readmission in some studies. However, these findings were not confirmed by other studies, as in one study [35], female gender was found to be a risk factor for early readmission, whereas younger age was associated with early readmission by two studies [35,49]. These conflicting results could be explained by different settings as, in some countries, older patients are mostly treated at home or in nursing homes and, thus, are not transferred to an acute hospital [35].

Nevertheless, the majority of the studies did not find a significant association between gender and age and readmission rate [10–12,22,23,29,31,33,36,38–40,42–45,48]. A poor socioeconomic status (living in a disadvantaged area [42], low level of education [30], belonging to minorities [3,40], speaking a foreign language [45]) increase the risk for early readmission as well as living in a rural area [3]. These findings are similar to previous systematic reviews on this topic [8,20,53].

Regarding the health factors, factors associated with frailty syndrome (malnutrition [21, 23,38,46], lower daily steps [22], cognitive impairment [28–30,38], multi-morbidity [11,12, 27,30,31,36,39,40,45,49]) and functional dependence [31] these are associated to an increased risk of early readmission.

These findings are partially in contrast with Wang–Hansen et al. [35], who suggested that better cognitive performance is a risk factor for hospital readmission. According to these authors, this could be due to the practice, diffused in the Norwegian healthcare system, to mostly treat patients with cognitive decline in nursing homes without transferring them to acute hospitals [35].

Finally, our review found that some underlying comorbidities (chronic obstructive pulmonary disease [44,49], kidney failure [28,49], cerebrovascular diseases [28], diabetes [46,49], hypertension [44], atrial fibrillation [46], cardiovascular diseases [10], liver diseases [10,46,49] and depression [23]) are associated to increased risk of early readmission.

Regarding healthcare system utilisation, our review found that patients with a recent hospitalisation [10,12,45] or Emergency Department visits [30,43], frequent hospital visitors [33,39] or patients with longer hospital length of stay [12,30,36,46,49] are at higher risk of early readmission. These findings are similar to the ones obtained by previous systematic reviews [8,20].

Silber et al. [32] found that hospitalisation in non-teaching hospitals is associated with an increased risk of readmission. Finally, Maddox et al. [42] found that Medicaid patients have a higher readmission risk and those patients have poorer socio-economical conditions.

Regarding the clinical factors, some diagnoses made during the index admission (heart failure, exacerbation of chronic pulmonary disease, hyponatremia, pressure ulcers, anaemia and sepsis) are associated with early readmission.

Furthermore, the prescription of 15 or more drugs during the hospital stay [12], non-compliance to venous thromboembolism prophylaxis [34] and adverse clinical events during hospitalisation [10] were associated with increased risk of early readmission.

Finally, Van Seben et al. [38] focused on the period immediately following the discharge showing that the development of cognitive impairment, fatigue or falls one month after discharge is associated with an increased risk of early readmission.

As pointed out above, the contrasting results could be explained by the differences between the different countries in which the studies were carried out and the differences in healthcare systems.

Therefore, we compared the results of the different macro-areas (Europe, USA, Asia and Oceania).

From this comparison, it can be inferred that some risk factors for early readmission are common to the different macro-areas (in particular, a length of hospitalisation of at least 6 days [12,30,36,46,49] and the presence of multi-morbidities [11,12,27,30,31,36,39,40,45,49]), but some differences can be highlighted for the other risk factors.

In particular, our review highlights how social isolation and low socio-economic level represent risk factors for readmission, mainly in studies carried out in the USA [40,42] and Oceania [3,45]. It should be pointed out that in the studies carried out in Europe and Asia, this risk factor was less frequently evaluated.

Another difference between the various macro-areas concerns the diagnosis of dementia, which represents a risk factor for readmission in Europe and Israel [28,30,38,46,47], but not in Asia [11] and only for patients residing in nursing homes in the USA [40,44].

Furthermore, the presence of cancer is a risk factor for readmission in some studies carried out in Europe and Asia [12,36,46], whereas this factor is not studied in the papers carried out in the USA [22,29,32,34,40–42,44,49].

Finally, this review shows that malnutrition [21,23,38,46], male gender [3,30,46] and age [3,28,33,47] are among the risk factors most emphasised among the included studies but are not present in any of the studies carried out in the USA [22,29,32,34,40–42,44,49].

These differences are probably due to cultural, environmental and health systems differences amongst the different countries.

The strength of this review is the strict methodology applied. Specifically, the use of a standardised tool (JBI tool) to assess the bias of the included papers allow us to standardise the evaluation and thus to draw objective conclusions even in the case of heterogeneous papers. However, due to the high heterogeneity of the different studies, the results are difficult to compare. Furthermore, all the included studies have biases according to the JBI tool.

It is noteworthy to underline that about half of the studies included evaluated early readmission in a single ward or hospital; this probably leads to an underestimation of the total readmission rate. This bias is not negligible as, according to the literature [54], the rate of readmissions to a different ward or hospital varies between 20 and 40%.

Another limit of this review is the type of readmission included in different studies, as about half of the studies [10,21,27,29,30,32–36,43,44,47,49] are not limited to unplanned readmissions; this bias can overestimate the early readmission rate.

Due to these limitations, the authors believe that there is still room for further experimental studies with clear outcomes on early, unplanned hospital readmission in acute geriatric patients.

The quality assessment carried out during the review will be particularly important for researchers wishing to carry out future work on the subject of readmissions, as it will enable them to have a more rigorous methodology with a lower risk of bias.

5. Conclusions

Our review gives a broad overview of risk factors for early hospital readmission in geriatric patients. The early identification of the patients at higher risk of early readmission may allow for planning targeted interventions in view of hospital discharge.

Amongst the risk factors highlighted by different studies, those associated with frailty syndrome play an important role, in particular malnutrition, reduced mobility, risk of falls, fatigue and functional dependence. This result is of paramount importance as these conditions are modifiable and must be taken into account in patients' evaluation and treatment. Careful nutritional management and early mobilisation during hospitalisation are, therefore, low-cost measures that can lead to a reduction in the readmission rate [21–23,38,41] with significant improvement in patients' quality of life and reduction of health costs.

Supplementary Materials: The following supporting information can be downloaded at: <https://www.mdpi.com/article/10.3390/ijerph20031674/s1>, Table S1: Studies included, design, variables considered and results.

Author Contributions: Conceptualisation, F.C. and P.D.; methodology, F.C. and P.D.; validation, P.D.; investigation, F.C., I.S. and P.D.; data curation, F.C., I.S. and P.D.; writing—original draft preparation, F.C. and I.S.; writing—review and editing, F.C., I.S. and P.D.; visualisation, F.C. and I.S.; project administration, P.D.; supervision, P.D. All authors have read and agreed to the published version of the manuscript.

Funding: This research received no external funding.

Institutional Review Board Statement: Not applicable.

Informed Consent Statement: Not applicable.

Data Availability Statement: All the available data are available to the public and presented in the manuscript.

Conflicts of Interest: The authors declare no conflict of interest.

Appendix A

Table A1. PRISMA 2020 Checklist.

Section and Topic	Item #	Checklist Item	Location Where Item Is Reported
Title			
Title	1	Identify the report as a systematic review.	Page 1, lines 2–3
Abstract			
Abstract	2	See the PRISMA 2020 for abstracts checklist.	
Introduction			
Rationale	3	Describe the rationale for the review in the context of existing knowledge.	Page 1, lines 36–54
Objectives	4	Provide an explicit statement of the objective(s) or question(s) the review addresses.	Page 1, lines 156–58
Methods			
Eligibility criteria	5	Specify the inclusion and exclusion criteria for the review and how studies were grouped for the syntheses.	Page 2, lines 61–74 and 76–81
Information sources	6	Specify all databases, registers, websites, organisations, reference lists and other sources searched or consulted to identify studies. Specify the date when each source was last searched or consulted.	Page 2, lines 87–88 and 102
Search strategy	7	Present the full search strategies for all databases, registers and websites, including any filters and limits used.	Page 2–3, lines 89–101
Selection process	8	Specify the methods used to decide whether a study met the inclusion criteria of the review, including how many reviewers screened each record and each report retrieved, whether they worked independently, and, if applicable, details of automation tools used in the process.	Page 3, lines 104–109
Data collection process	9	Specify the methods used to collect data from reports, including how many reviewers collected data from each report, whether they worked independently, any processes for obtaining or confirming data from study investigators, and, if applicable, details of automation tools used in the process.	Page 3, lines 109–114
Data items	10a	List and define all outcomes for which data were sought. Specify whether all results that were compatible with each outcome domain in each study were sought (e.g., for all measures, time points, analyses), and if not, the methods used to decide which results to collect.	Page 2, line 74
	10b	List and define all other variables for which data were (e.g., participant and intervention characteristics, funding sources). Describe any assumptions made about any missing or unclear information.	Page 3, lines 113–115
Study risk of bias assessment	11	Specify the methods used to assess the risk of bias in the included studies, including details of the tool(s) used, how many reviewers assessed each study and whether they worked independently, and if applicable, details of automation tools used in the process.	Page 4, lines 130–139
Effect measures	12	Specify for each outcome the effect measure(s) (e.g., risk ratio, mean difference) used in the synthesis or presentation of results.	NA
Synthesis methods	13a	Describe the processes used to decide which studies were eligible for each synthesis (e.g., tabulating the study intervention characteristics and comparing against the planned groups for each synthesis (item #5)).	NA
	13b	Describe any methods required to prepare the data for presentation or synthesis, such as handling missing summary statistics or data conversions.	NA

Table A1. Cont.

Section and Topic	Item #	Checklist Item	Location Where Item Is Reported
	13c	Describe any methods used to tabulate or visually display the results of individual studies and syntheses.	NA
	13d	Describe any methods used to synthesise results and provide a rationale for the choice(s). If meta-analysis was performed, describe the model(s), method(s) to identify the presence and extent of statistical heterogeneity, and software package(s) used.	NA
	13e	Describe any methods used to explore possible causes of heterogeneity among study results (e.g., subgroup analysis, meta-regression).	NA
	13f	Describe any sensitivity analyses conducted to assess the robustness of the synthesised results.	NA
Reporting bias assessment	14	Describe any methods used to assess the risk of bias due to missing results in a synthesis (arising from reporting biases).	NA
Certainty assessment	15	Describe any methods used to assess certainty (or confidence) in the body of evidence for an outcome.	NA
Results			
Study selection	16a	Describe the results of the search and selection process, from the number of records identified in the search to the number of studies included in the review, ideally using a flow diagram.	Figure 1
	16b	Cite studies that might appear to meet the inclusion criteria but which were excluded, and explain why they were excluded.	NA
Study characteristics	17	Cite each included study and present its characteristics.	Table S1
Risk of bias in studies	18	Present assessments of risk of bias for each included study.	Figure 3
Results of individual studies	19	For all outcomes, present, for each study: (a) summary statistics for each group (where appropriate) and (b) an effect estimate and its precision (e.g., confidence/credible interval), ideally using structured tables or plots.	Table S1
Results of syntheses	20a	For each synthesis, briefly summarise the characteristics and risk of bias among contributing studies.	NA
	20b	Present results of all statistical syntheses conducted. If meta-analysis was done, present for each the summary estimate and its precision (e.g., confidence/credible interval) and measures of statistical heterogeneity. If comparing groups, describe the direction of the effect.	NA
	20c	Present results of all investigations of possible causes of heterogeneity among study results.	NA
	20d	Present results of all sensitivity analyses conducted to assess the robustness of the synthesised results.	NA
Reporting biases	21	Present assessments of risk of bias due to missing results (arising from reporting biases) for each synthesis assessed.	NA
Certainty of evidence	22	Present assessments of certainty (or confidence) in the body of evidence for each outcome assessed.	NA
Discussion			
Discussion	23a	Provide a general interpretation of the results in the context of other evidence.	Page 9, lines 245–318
	23b	Discuss any limitations of the evidence included in the review.	Page 11, lines 322–331

Table A1. *Cont.*

Section and Topic	Item #	Checklist Item	Location Where Item Is Reported
	23c	Discuss any limitations of the review processes used.	Page 11, lines 321–323
	23d	Discuss the implications of the results for practice, policy, and future research.	Page 11, lines 345–349
Other Information			
Registration and protocol	24a	Provide registration information for the review, including the registration name and registration number, or state that the review was not registered.	Page 2, lines 85–87
	24b	Indicate where the review protocol can be accessed or state that a protocol was not prepared.	Page 2, lines 87
	24c	Describe and explain any amendments to the information provided at registration or in the protocol.	NA
Support	25	Describe sources of financial or non-financial support for the review and the role of the funders or sponsors in the review.	Page 11, lines 351
Competing interests	26	Declare any competing interests of review authors.	Page 11, lines 356
Availability of data, code and other materials	27	Report which of the following are publicly available and where they can be found: template data collection forms; data extracted from included studies; data used for all analyses; analytic code; any other materials used in the review.	Page 4, lines 131–132

Table A2. PRISMA 2020 for Abstracts Checklist.

Section and Topic	Item #	Checklist Item	Reported (Yes/No)
Title			
Title	1	Identify the report as a systematic review.	Yes
Background			
Objectives	2	Provide an explicit statement of the main objective(s) or question(s) the review addresses.	Yes
Methods			
Eligibility criteria	3	Specify the inclusion and exclusion criteria for the review.	No
Information sources	4	Specify the information sources (e.g., databases, registers) used to identify studies and the date when each was last searched.	Yes
Risk of bias	5	Specify the methods used to assess the risk of bias in the included studies.	Yes
Synthesis of results	6	Specify the methods used to present and synthesise results.	No
Results			
Included studies	7	Give the total number of included studies and participants and summarise relevant characteristics of studies.	Yes
Synthesis of results	8	Present results for main outcomes, preferably indicating the number of included studies and participants for each. If meta-analysis was done, report the summary estimate and confidence/credible interval. If comparing groups, indicate the direction of the effect (i.e., which group is favoured).	Yes

Table A2. Cont.

Section and Topic	Item #	Checklist Item	Reported (Yes/No)
Discussion			
Limitations of evidence	9	Provide a brief summary of the limitations of the evidence included in the review (e.g., study risk of bias, inconsistency and imprecision).	No
Interpretation	10	Provide a general interpretation of the results and important implications.	Yes
Other			
Funding	11	Specify the primary source of funding for the review.	No
Registration	12	Provide the register name and registration number.	No

References

- Population Division, Department of Economic and Social Affairs. *World Population Prospects 2019 Highlights*; United Nation: New York, NY, USA, 2019.
- Aiken, L.H.; Sermeus, W.; van den Heede, K.; Sloane, D.M.; Busse, R.; McKee, M.; Bruyneel, L.; Rafferty, A.M.; Griffiths, P.; Moreno-Casbas, M.T.; et al. Patient Safety, Satisfaction, and Quality of Hospital Care: Cross Sectional Surveys of Nurses and Patients in 12 Countries in Europe and the United States. *BMJ* **2012**, *344*, e1717. [[CrossRef](#)]
- Robinson, S.; Howie-Esquivel, J.; Vlahov, D. Readmission Risk Factors after Hospital Discharge among the Elderly. *Popul. Health Manag.* **2012**, *15*, 338–351. [[CrossRef](#)]
- Halfon, P.; Egli, Y.; Prêtre-Rohrbach, I.; Meylan, D.; Marazzi, A.; Burnand, B. Validation of the Potentially Avoidable Hospital Readmission Rate as a Routine Indicator of the Quality of Hospital Care. *Med. Care* **2006**, *44*, 972–981. [[CrossRef](#)]
- Coleman, E.A.; Min, S.J.; Chomiak, A.; Kramer, A.M. Posthospital Care Transitions: Patterns, Complications, and Risk Identification. *Health Serv. Res.* **2004**, *39*, 1449. [[CrossRef](#)]
- Lin, K.P.; Chen, P.C.; Huang, L.Y.; Mao, H.C.; Chan, D.C.D. Predicting Inpatient Readmission and Outpatient Admission in Elderly: A Population-Based Cohort Study. *Medicine* **2016**, *95*, e3484. [[CrossRef](#)]
- van Walraven, C.; Dhalla, I.A.; Bell, C.; Etchells, E.; Stiell, I.G.; Zarnke, K.; Austin, P.C.; Forster, A.J. Derivation and Validation of an Index to Predict Early Death or Unplanned Readmission after Discharge from Hospital to the Community. *Can. Med. Assoc. J.* **2010**, *182*, 551–557. [[CrossRef](#)]
- García-Pérez, L.; Linertová, R.; Lorenzo-Riera, A.; Vázquez-Díaz, J.R.; Duque-González, B.; Sarría-Santamera, A. Risk Factors for Hospital Readmissions in Elderly Patients: A Systematic Review. *QJM: Int. J. Med.* **2011**, *104*, 639–651. [[CrossRef](#)]
- Tsai, T.C.; Joynt, K.E.; Orav, E.J.; Gawande, A.A.; Jha, A.K. Variation in Surgical-Readmission Rates and Quality of Hospital Care. *N. Engl. J. Med.* **2013**, *369*, 1134–1142. [[CrossRef](#)]
- Franchi, C.; Nobili, A.; Mari, D.; Tettamanti, M.; Djade, C.D.; Pasina, L.; Salerno, F.; Corrao, S.; Marengoni, A.; Iorio, A.; et al. Risk Factors for Hospital Readmission of Elderly Patients. *Eur. J. Intern. Med.* **2013**, *24*, 45–51. [[CrossRef](#)]
- Finlayson, K.; Chang, A.M.; Courtney, M.D.; Edwards, H.E.; Parker, A.W.; Hamilton, K.; Pham, T.D.X.; O'Brien, J. Transitional Care Interventions Reduce Unplanned Hospital Readmissions in High-Risk Older Adults. *BMC Health Serv. Res.* **2018**, *18*, 956. [[CrossRef](#)]
- Uhlmann, M.; Léclureux, E.; Griesser, A.C.; Duong, H.D.; Lamy, O. Prediction of Potentially Avoidable Readmission Risk in a Division of General Internal Medicine. *Swiss Med. Wkly.* **2017**, *147*, w14470. [[CrossRef](#)] [[PubMed](#)]
- Wasserfallen, J.B.; Zufferey, J. Financial Impact of Introducing the Swiss-DRG Reimbursement System on Potentially Avoidable Readmissions at a University Hospital. *Swiss Med. Wkly.* **2015**, *145*, w14097. [[CrossRef](#)]
- Møller Dahl, C.; Planck Kongstad, L. The Costs of Acute Readmissions to a Different Hospital—Does the Effect Vary across Provider Types? *Soc. Sci. Med.* **2017**, *183*, 116–125. [[CrossRef](#)] [[PubMed](#)]
- Dobrzanska, L.; Newell, R. Readmissions: A Primary Care Examination of Reasons for Readmission of Older People and Possible Readmission Risk Factors. *J. Clin. Nurs.* **2006**, *15*, 599–606. [[CrossRef](#)]
- Mulder, B.J.; Tzeng, H.M.; Vecchioni, N.D. Preventing Avoidable Rehospitalizations by Understanding the Characteristics of “Frequent Fliers”. *J. Nurs. Care Qual.* **2012**, *27*, 77–82. [[CrossRef](#)] [[PubMed](#)]
- Hansen, L.O.; Greenwald, J.L.; Budnitz, T.; Howell, E.; Halasyamani, L.; Maynard, G.; Vidyarthi, A.; Coleman, E.A.; Williams, M.V. Project BOOST: Effectiveness of a Multihospital Effort to Reduce Rehospitalization. *J. Hosp. Med.* **2013**, *8*, 421–427. [[CrossRef](#)]
- Koehler, B.E.; Richter, K.M.; Youngblood, L.; Cohen, B.A.; Prengler, I.D.; Cheng, D.; Masica, A.L. Reduction of 30-Day Postdischarge Hospital Readmission or Emergency Department (ED) Visit Rates in High-Risk Elderly Medical Patients through Delivery of a Targeted Care Bundle. *J. Hosp. Med.* **2009**, *4*, 211–218. [[CrossRef](#)]
- Sharma, G.; Kuo, Y.F.; Freeman, J.L.; Zhang, D.D.; Goodwin, J.S. Outpatient Follow-Up Visit and 30-Day Emergency Department Visit and Readmission in Patients Hospitalized for Chronic Obstructive Pulmonary Disease. *Arch. Intern. Med.* **2010**, *170*, 1664–1670. [[CrossRef](#)]

20. Pedersen, M.K.; Meyer, G.; Uhrenfeldt, L. Risk Factors for Acute Care Hospital Readmission in Older Persons in Western Countries: A Systematic Review. *JBI Evid. Synth.* **2017**, *15*, 454–485. [[CrossRef](#)]
21. Oud, F.M.M.; Wolzak, N.K.; Spies, P.E.; van der Zaag-Loonen, H.J.; van Munster, B.C. The Predictive Value of the “VMS Frail Older Patients” for Adverse Outcomes in Geriatric Inpatients. *Arch. Gerontol. Geriatr.* **2021**, *97*, 104514. [[CrossRef](#)]
22. Fisher, S.R.; Graham, J.E.; Ottenbacher, K.J.; Deer, R.; Ostir, G.V. Inpatient Walking Activity to Predict Readmission in Older Adults. *Arch. Phys. Med. Rehabil.* **2016**, *97*, S226–S231. [[CrossRef](#)] [[PubMed](#)]
23. Fitriana, I.; Setiati, S.; Rizal, E.W.; Istanti, R.; Rinaldi, I.; Kojima, T.; Akishita, M.; Azwar, M.K. Malnutrition and Depression as Predictors for 30-Day Unplanned Readmission in Older Patient: A Prospective Cohort Study to Develop 7-Point Scoring System. *BMC Geriatr.* **2021**, *21*, 256. [[CrossRef](#)] [[PubMed](#)]
24. DeLia, D.; Tong, J.; Gaboda, D.; Casalino, L.P. Post-Discharge Follow-Up Visits and Hospital Utilization by Medicare Patients, 2007–2010. *Medicare Medicaid Res. Rev.* **2014**, *4*, E1–E19. [[CrossRef](#)]
25. Hu, J.; Kind, A.J.H.; Nerenz, D. Area Deprivation Index Predicts Readmission Risk at an Urban Teaching Hospital. *Am. J. Med. Qual.* **2018**, *33*, 493–501. [[CrossRef](#)] [[PubMed](#)]
26. Graham, K.L.; Wilker, E.H.; Howell, M.D.; Davis, R.B.; Marcantonio, E.R. Differences between Early and Late Readmissions among Patients: A Cohort Study. *Ann. Intern. Med.* **2015**, *162*, 741–749. [[CrossRef](#)]
27. Mueller, M.; Huembelin, M.; Baechli, C.; Wagner, U.; Schuetz, P.; Mueller, B.; Kutz, A. Association of In-Hospital Multimorbidity with Healthcare Outcomes in Swiss Medical Inpatients. *Swiss Med. Wkly.* **2021**, *151*, w20405. [[CrossRef](#)]
28. Vallini, V.; Venturini, L.; Andreini, R.; Sibilia, G.; Rinaldi, E.; Bassu, R.; Mura, M.; Meini, S. Skin Ulcers Are Predictors of 30-Day Hospital Readmission, but Are Under-Represented in the DRG Coding: A Retrospective Case-Control Study From an Italian Internal Medicine Unit. *Int. J. Low. Extrem. Wounds* **2021**, 15347346211009427. [[CrossRef](#)]
29. Anderson, R.E.; Birge, S.J. Cognitive Dysfunction, Medication Management, and the Risk of Readmission in Hospital Inpatients. *J. Am. Geriatr. Soc.* **2016**, *64*, 1464–1468. [[CrossRef](#)]
30. Lehn, S.F.; Zwisler, A.D.; Pedersen, S.G.H.; Gjørup, T.; Thygesen, L.C. Development of a Prediction Model for 30-Day Acute Readmissions among Older Medical Patients: The Influence of Social Factors along with Other Patient-Specific and Organisational Factors. *BMJ Open Qual.* **2019**, *8*, e000544. [[CrossRef](#)]
31. Calsolaro, V.; Antognoli, R.; Pasqualetti, G.; Okoye, C.; Aquilini, F.; Cristofano, M.; Briani, S.; Monzani, F. 30-Day Potentially Preventable Hospital Readmissions in Older Patients: Clinical Phenotype and Health Care Related Risk Factors. *Clin. Interv. Aging* **2019**, *14*, 1851–1858. [[CrossRef](#)]
32. Silber, J.H.; Rosenbaum, P.R.; Niknam, B.A.; Ross, R.N.; Reiter, J.G.; Hill, A.S.; Hochman, L.L.; Brown, S.E.; Arriaga, A.F.; Fleisher, L.A. Comparing Outcomes and Costs of Medical Patients Treated at Major Teaching and Non-Teaching Hospitals: A National Matched Analysis. *J. Gen. Intern. Med.* **2020**, *35*, 743–752. [[CrossRef](#)]
33. Froom, P.; Shimoni, Z.; Benbassat, J. A Simple Index Predicting 30-Day Readmissions in Acutely Hospitalized Patients. *J. Eval. Clin. Pract.* **2021**, *27*, 942–948. [[CrossRef](#)] [[PubMed](#)]
34. Goldin, M.; Cohen, J.; Makhnevich, A.; Mulvany, C.; Akerman, M.; Sinvani, L. Patterns and Outcomes of Prescribing Venous Thromboembolism Prophylaxis in Hospitalized Older Adults: A Retrospective Cohort Study. *J. Thromb. Thrombolysis* **2018**, *45*, 369–376. [[CrossRef](#)]
35. Wang-Hansen, M.S.; Kersten, H.; Benth, J.Š.; Wyller, T.B. The Association between Geriatric Treatment and 30-Day Readmission Risk among Medical Inpatients Aged ≥ 75 Years with Multimorbidity. *PLoS ONE* **2022**, *17*, e0262340. [[CrossRef](#)] [[PubMed](#)]
36. Shu, C.C.; Lin, Y.F.; Hsu, N.C.; Ko, W.J. Risk Factors for 30-Day Readmission in General Medical Patients Admitted from the Emergency Department: A Single Centre Study. *Intern. Med. J.* **2012**, *42*, 677–682. [[CrossRef](#)] [[PubMed](#)]
37. JBI. Critical Appraisal Tools. Available online: <https://jbi.global/critical-appraisal-tools> (accessed on 6 November 2022).
38. van Seben, R.; Covinsky, K.E.; Reichardt, L.A.; Aarden, J.J.; van der Schaaf, M.; van der Esch, M.; Engelbert, R.H.H.; Twisk, J.W.R.; Bosch, J.A.; Buurman, B.M.; et al. Insight Into the Posthospital Syndrome: A 3-Month Longitudinal Follow up on Geriatric Syndromes and Their Association With Functional Decline, Readmission, and Mortality. *J. Gerontol. Ser. A* **2020**, *75*, 1403–1410. [[CrossRef](#)] [[PubMed](#)]
39. Lin, K.P.; Chen, J.H.; Lu, F.P.; Wen, C.J.; Chan, D.C. The Impact of Early Comprehensive Geriatric Screening on the Readmission Rate in an Acute Geriatric Ward: A Quasi-Experimental Study. *BMC Geriatr.* **2019**, *19*, 285. [[CrossRef](#)]
40. Chan, B.; Goldman, L.E.; Sarkar, U.; Guzman, D.; Critchfield, J.; Saha, S.; Kushel, M. High Perceived Social Support and Hospital Readmissions in an Older Multi-Ethnic, Limited English Proficiency, Safety-Net Population. *BMC Health Serv. Res.* **2019**, *19*, 334. [[CrossRef](#)]
41. Fisher, S.R.; Kuo, Y.F.; Sharma, G.; Raji, M.A.; Kumar, A.; Goodwin, J.S.; Ostir, G.V.; Ottenbacher, K.J. Mobility after Hospital Discharge as a Marker for 30-Day Readmission. *J. Gerontol. A Biol. Sci. Med. Sci.* **2013**, *68*, 805–810. [[CrossRef](#)] [[PubMed](#)]
42. Joynt Maddox, K.E.; Reidhead, M.; Hu, J.; Kind, A.J.H.; Zaslavsky, A.M.; Na-gasako, E.M.; Nerenz, D.R. Adjusting for Social Risk Factors Impacts Performance and Penalties in the Hospital Readmissions Reduction Program. *Health Serv. Res.* **2019**, *54*, 327–336. [[CrossRef](#)]
43. Cotter, P.E.; Bhalla, V.K.; Wallis, S.J.; Biram, R.W.S. Predicting Readmissions: Poor Performance of the LACE Index in an Older UK Population. *Age Ageing* **2012**, *41*, 784–789. [[CrossRef](#)] [[PubMed](#)]

44. Bogaisky, M.; Dezieck, L. Early Hospital Readmission of Nursing Home Residents and Community-Dwelling Elderly Adults Discharged from the Geriatrics Service of an Urban Teaching Hospital: Patterns and Risk Factors. *J. Am. Geriatr. Soc.* **2015**, *63*, 548–552. [[CrossRef](#)] [[PubMed](#)]
45. Scott, I.A.; Shohag, H.; Ahmed, M. Quality of Care Factors Associated with Unplanned Readmissions of Older Medical Patients: A Case-Control Study. *Intern. Med. J.* **2014**, *44*, 161–170. [[CrossRef](#)] [[PubMed](#)]
46. Zapatero, A.; Barba, R.; Marco, J.; Hinojosa, J.; Plaza, S.; Losa, J.E.; Canora, J. Predictive Model of Readmission to Internal Medicine Wards. *Eur. J. Intern. Med.* **2012**, *23*, 451–456. [[CrossRef](#)] [[PubMed](#)]
47. Ben-Chetrit, E.; Chen-Shuali, C.; Zimran, E.; Munter, G.; Neshet, G. A Simplified Scoring Tool for Prediction of Readmission in Elderly Patients Hospitalized in Internal Medicine Departments. *IMAJ Isr. Med. Assoc. J.* **2012**, *14*, 752–756.
48. Higi, L.; Lisibach, A.; Beeler, P.E.; Lutters, M.; Blanc, A.L.; Burden, A.M.; Stämpfli, D. External Validation of the PAR-Risk Score to Assess Potentially Avoidable Hospital Readmission Risk in Internal Medicine Patients. *PLoS ONE* **2021**, *16*, e0259864. [[CrossRef](#)] [[PubMed](#)]
49. Kim, L.D.; Kou, L.; Messinger-Rapport, B.J.; Rothberg, M.B. Validation of the HOSPITAL Score for 30-Day All-Cause Readmissions of Patients Discharged to Skilled Nursing Facilities. *J. Am. Med. Dir. Assoc.* **2016**, *17*, 863.e15–863.e18. [[CrossRef](#)]
50. Futoma, J.; Morris, J.; Lucas, J. A Comparison of Models for Predicting Early Hospital Readmissions. *J. Biomed. Inform.* **2015**, *56*, 229–238. [[CrossRef](#)]
51. HealthCare.Gov. Hospital Readmissions—Glossary. Available online: <https://www.healthcare.gov/glossary/hospital-readmissions/> (accessed on 29 November 2022).
52. McGuinness, L.A.; Higgins, J.P.T. Risk-of-Bias Visualization (Robvis): An R Package and Shiny Web App for Visualizing Risk-of-Bias Assessments. *Res. Synth. Methods* **2021**, *12*, 55–61. [[CrossRef](#)]
53. Campbell, S.E.; Seymour, D.G.; Primrose, W.R. A Systematic Literature Review of Factors Affecting Outcome in Older Medical Patients Admitted to Hospital. *Age Ageing* **2004**, *33*, 110–115. [[CrossRef](#)]
54. Jencks, S.F.; Williams, M.V.; Coleman, E.A. Rehospitalizations among Patients in the Medicare Fee-for-Service Program. *N. Engl. J. Med.* **2009**, *360*, 311–312. [[CrossRef](#)] [[PubMed](#)]

Disclaimer/Publisher’s Note: The statements, opinions and data contained in all publications are solely those of the individual author(s) and contributor(s) and not of MDPI and/or the editor(s). MDPI and/or the editor(s) disclaim responsibility for any injury to people or property resulting from any ideas, methods, instructions or products referred to in the content.