

Serveur Académique Lausannois SERVAL [serval.unil.ch](http://serval.unil.ch)

## Author Manuscript

Faculty of Biology and Medicine Publication

This paper has been peer-reviewed but does not include the final publisher proof-corrections or journal pagination.

Published in final edited form as:

**Title:** Astrocyte function from information processing to cognition and cognitive impairment.

**Authors:** Santello M, Toni N, Volterra A

**Journal:** Nature neuroscience

**Year:** 2019 Feb

**Issue:** 22

**Volume:** 2

**Pages:** 154-166

**DOI:** [10.1038/s41593-018-0325-8](https://doi.org/10.1038/s41593-018-0325-8)

In the absence of a copyright statement, users should assume that standard copyright protection applies, unless the article contains an explicit statement to the contrary. In case of doubt, contact the journal publisher to verify the copyright status of an article.

# **Astrocyte function from information processing to cognition and cognitive impairment**

Mirko Santello<sup>1,2</sup>, Nicolas Toni<sup>3</sup> and Andrea Volterra<sup>4#</sup>

<sup>1</sup>Institute of Pharmacology and Toxicology, University of Zurich, Zurich, Switzerland <sup>2</sup>Neuroscience Center Zurich, University of Zurich and ETH Zurich, Zurich, Switzerland, <sup>3</sup>Center for Psychiatric Neuroscience, Department of Psychiatry, Lausanne University Hospital, Prilly-Lausanne, Switzerland. <sup>4</sup>Department of Fundamental Neuroscience, University of Lausanne, Lausanne, Switzerland

#To whom correspondence should be addressed: [andrea.volterra@unil.ch](mailto:andrea.volterra@unil.ch)

## **SUMMARY**

Astrocytes serve important roles that affect recruitment and function of neurons at the local and network levels. Here we review the contributions of astrocyte signaling to synaptic plasticity, neuronal network oscillations and memory function. The roles played by astrocytes are not fully understood, but astrocytes seem to contribute to memory consolidation and to mediate the effects of vigilance and arousal on memory performance. Understanding the role of astrocytes in cognitive processes may also advance our understanding of how these processes go awry in pathological conditions. Indeed, abnormal astrocytic signaling can cause or contribute to synaptic and network imbalances, leading to cognitive impairment. We discuss evidence for this from animal models of Alzheimer's disease and multiple sclerosis, and from animal studies of sleep deprivation and drug abuse and addiction. Understanding the emerging roles of astrocytes in cognitive function and dysfunction will open up a large array of new therapeutic opportunities.

## INTRODUCTION

Astrocytes are morphologically complex cells characterized by an intricate arborization and by anatomical specializations controlling local interactions with other CNS elements, including neuronal synapses, blood vessels and other glial cells. Each astrocyte occupies a brain territory distinct from that of other astrocytes, but together they can form dynamic networks via gap-junction connectivity. This anatomical complexity is mirrored by functional complexity. Astrocytes have been implicated in a variety of structural, metabolic and homeostatic functions, and in the control of cerebral blood flow. Since the '90s an additional astrocyte function has emerged that has greatly contributed to our understanding of brain function at the cellular level, namely the interaction of astrocytes with synapses and neuronal circuits. Key initial observations were that astrocytes sense neuronal activity and respond to it with intracellular  $\text{Ca}^{2+}$  elevations and that they release transmitters in response to  $\text{Ca}^{2+}$  elevations and other stimuli. These observations gave rise to the concept of "tripartite synapses"<sup>1</sup>, in which astrocytes were for the first time considered as active participants in synaptic processing.

Animal studies have shown that astrocyte interactions with synaptic circuits are multimodal and multiscale, occur under physiological conditions<sup>2-5</sup> and contribute to behavior<sup>6-8</sup>. Astrocytes express a repertoire of receptors, transporters and other molecules enabling them to sense a multitude of synaptic mediators as well as cytokines, prostaglandins, and signals related to changes in local ionic concentrations, pH, immune or redox state. Moreover, astrocytes possess the machinery to produce a variety of molecules that can act at synapses, including glutamate, the NMDAR co-agonist D-serine, ATP and its catabolic product adenosine, metabolic agents such as L-lactate, and other soluble or contact factors that participate in the formation, stabilization, and elimination of synaptic connections<sup>3</sup>.

Evidence of astrocyte-synapse communication exists in so many CNS circuits that it could be considered a universal contributor to synaptic functions. Recently, several rules governing this communication have started to emerge, dictated both by the specific biological properties of astrocytes and by the modalities of their dynamic interaction with individual synapses and neuronal networks. The astrocytic contributions appear to be circuit-specific<sup>9</sup>, stimulus-specific<sup>10</sup>, and their outputs in register with the modalities of their activation<sup>11</sup>. In parallel, improved  $\text{Ca}^{2+}$  imaging approaches have revealed a spatial-temporal diversity of astrocytic  $\text{Ca}^{2+}$  signals that may underlie the capacity of astrocytes to encode and process different patterns of activation, accounting for the above properties<sup>12, 13</sup>.

In this review we discuss the role of astrocytes in cognitive processing, focusing on memory. To start, we will consider the lines of evidence that support a multimodal astrocytic involvement in local synaptic plasticity and in state-dependent oscillations of neuronal networks. Indeed, coordinated network oscillatory activity<sup>14</sup> and plastic remodeling of the underlying synaptic circuits<sup>15</sup> form the basis of memory encoding and other cognitive functions, which are influenced by brain states. We will then describe recent

studies that more-directly demonstrate the involvement of astrocyte signaling in cognitive processing. Finally, we will discuss data showing that altered astrocyte-synapse/network function in pathological conditions contributes to cognitive disturbances.

## **Astrocytes influence local synaptic activity and plasticity**

Astrocytes contribute to the functional outcome of local synaptic transmission and plasticity in at least two interrelated ways: they undergo plastic rearrangements in coordination with the pre- and post-synaptic elements (morphological plasticity), and they actively control synaptic function via exchange of regulatory signals with the synaptic (neuronal) elements (bi-directional communication).

### *Morphological plasticity of astrocyte-synapse interactions*

Astrocytes have a role in regulating structural remodeling and functional plasticity of synapses. Crucial in this role are the perisynaptic astrocytic processes (PAPs), thin astrocytic lamellae surrounding synapses. PAPs express functionally relevant membrane proteins — such as glutamate transporters, which are essential for removing glutamate and terminating its synaptic actions — and contain the machinery for releasing fast transmitters<sup>2</sup>. PAPs ensheath synaptic elements to variable extents, depending on the brain area and circuit. For example, in the cerebellar cortex, PAPs of Bergmann glia (specialized cerebellar astrocytes) cover most synapses completely, whereas in the CA1 region of the hippocampus PAPs cover about half of the synapses and only partially<sup>16</sup>. The extent by which PAPs ensheath synapses is controlled by their actin-dependent motility and can change over time, including as function of neuronal activity (Fig. 1). For example, extensive whisker stimulation enhances PAP ensheathment of dendritic spines in the mouse somatosensory cortex, and this effect is accompanied by changes in the location and efficacy of glutamate transporters<sup>17</sup>. By contrast, in the rat hypothalamic supraoptic nucleus during lactation PAPs retract from synapses, resulting in enhanced extrasynaptic glutamate leakage, reduced synaptic release probability and decreased availability of astrocyte-released D-serine for NMDA receptor activation. This leads to a modified glutamatergic input conveying suckling information to oxytocin neurons<sup>18</sup>. In the hippocampus, long-term potentiation (LTP) is associated with altered spatial relations between PAPs and synapses. During LTP induction, more PAPs become apposed to activated synapses<sup>19</sup> — a form of local plasticity possibly supported by RNA translation within PAPs<sup>20</sup>. Real-time imaging shows that PAPs, due to actin remodeling, first increase their motility and subsequently enwrap the most enlarged spines more tightly<sup>21, 22</sup>. In the amygdala, learning of the fear response produces a different plastic change, namely a decrease in the number of large synapses associated with a PAP<sup>23</sup>. Independently of the type of change, anatomical modifications of PAPs are not mere structural correlates of synaptic plasticity, but rather they are active parts of the plasticity mechanisms and can ultimately influence memory. For example, mice lacking the astrocyte gap-junction-related protein connexin-30 show increased PAP coverage of synapses,

enhanced astrocytic glutamate uptake, reduced LTP expression and impaired fear memory<sup>24</sup>. Likewise, mice lacking the neuronal ephrin A4 receptor or its astrocytic ligand ephrin A3 show increased astrocytic GLT1 glutamate transporter uptake and impaired hippocampal LTP<sup>25</sup>, paralleled by altered dendritic spine morphology<sup>26</sup>. In contrast, animals with genetically-reduced astrocyte calcium dynamics show reduced PAPs ensheathment of synapses, reduced glutamate clearance and increased NMDAR-mediated excitatory postsynaptic currents<sup>27</sup>; however, the role of astrocyte Ca<sup>2+</sup> signaling needs further evaluation, because a different genetic interference strategy (see Table 1 for caveats on the two strategies) led to inconsistent results<sup>28</sup>. Together, these studies show that astrocytic and synaptic plastic changes occur coordinately and interdependently during synaptic remodeling. Rearrangement of the synaptic ensheathment modifies localization and efficacy of glutamate transport and astrocyte transmitter (gliotransmitter) release, thereby contributing to changes in the synaptic gain (Fig. 1).

#### *Astrocyte-synapse communication in synaptic plasticity*

Astrocytes contribute to synaptic plasticity by releasing fast mediators that directly modify synaptic function<sup>2, 4</sup>. This communication appears to play a critical role in various forms of plasticity (Fig. 2). For instance, classical NMDAR-dependent LTP at hippocampal CA1 synapses requires transient D-serine release from the astrocytes<sup>18, 29, 30</sup>. This D-serine “boost” appears to increase the occupancy of the NMDAR co-agonist binding site (by about 20-25%) up to a threshold of activation, which then allows the receptor to trigger the downstream signaling pathway that underlies LTP induction. As D-serine may also be produced in neurons<sup>31</sup>, some authors have questioned an astrocytic D-serine contribution. However, a recent study showed that activation of astrocytic but not neuronal  $\alpha 7$  nicotinic receptors boosts D-serine-mediated occupancy of the NMDAR co-agonist binding site<sup>32</sup> (see below). Astrocyte-released D-serine participates also in another form of synaptic plasticity, namely the integration of adult-born granule neurons into the hippocampal circuitry<sup>33</sup>, a processes going on throughout life and influencing the local circuit performance in memory processes and mood control (reviewed in<sup>34</sup>). Thus, during synaptic integration, newborn granule neurons display a lower threshold for LTP induction and higher potentiation than mature neurons, thereby maintaining a high degree of network plasticity. The synaptic integration process requires vesicular release of D-serine from astrocytes. Thus, two transgenic mouse lines with selectively suppressed astrocytic release, dnSNARE<sup>35</sup> and iBot mice<sup>36</sup> (see Box and Table 1) showed defective integration of newborn granule cells, with delayed dendritic maturation and reduced excitatory transmission. In addition, the mice had reduced brain D-serine levels (also seen in derived astrocytic cultures), and application of exogenous D-serine could restore synaptic integration and dendritic maturation of new neurons<sup>33</sup>.

Another astrocyte-derived molecule, L-lactate, plays a key role in LTP at hippocampal CA1 synapses<sup>37</sup>. During high-energy demand, glycogen stored in astrocytes is metabolized to L-lactate and shuttled to neurons<sup>37, 38</sup>. Pharmacological inhibition of astrocytic glycogenolysis during LTP induction causes rapid decay of the synaptic potentiation — an effect rescued by co-injection of exogenous L-lactate<sup>37</sup>. Therefore,

availability of L-lactate is necessary for maintaining LTP, although whether the agent acts as pure metabolic fuel for the synaptic remodeling or has additional functions is presently unclear. For example, L-Lactate can influence neuronal excitability in several ways, e.g. by boosting NMDAR activity and by stimulating other neuronal receptors, including the cell-surface lactate receptor GPR81 (reviewed in<sup>39-41</sup>).

Astrocytes also influence synaptic plasticity via cannabinoid receptor type-1 (CB1) signaling (Fig. 2 and 4a). CB1R is highly expressed in the CNS (likely the most abundant GPCR)<sup>42</sup>, and much evidence has accumulated for a role of its natural ligands, the endocannabinoids (eCBs), in modulating synaptic function, such as via inhibition of transmitter release at GABAergic and glutamatergic terminals<sup>43</sup>. CB1Rs are also expressed in astrocytes, although at lower levels than in neurons, and they participate in important mechanisms that regulate neuronal activity and ultimately memory performance<sup>44,45, 46</sup>. Initial findings showed that activity-dependent eCB release from CA1 pyramidal neurons activated astrocytic CB1Rs, inducing astrocytic Ca<sup>2+</sup> elevation and glutamate release, and resulting in NMDAR-dependent post-synaptic slow excitatory currents and mGluR1-dependent heterosynaptic facilitation of pre-synaptic glutamate release<sup>45, 46</sup>. Subsequent studies have shown that astrocyte CB1R signaling participates in long-term synaptic plasticity. Indeed, activation of astrocytic CB1Rs is necessary for induction of spike-timing dependent LTD (t-LTD) at L4-L2/3 cortical synapses, via glutamate release and activation of pre-synaptic NMDARs that permanently reduce synaptic transmission<sup>47</sup>. A recent study showed that the classical NMDAR-dependent LTP at CA1 hippocampal synapses requires (in addition to astrocyte D-serine<sup>29</sup>) astrocyte CB1Rs<sup>48</sup>, as their genetic deletion suppresses LTP, whereas supply of exogenous D-serine in the absence of the receptors restores it<sup>48</sup>. At the same synapses, astrocyte CB1Rs mediate glutamate-dependent heterosynaptic LTP<sup>49</sup>, although they can also mediate t-LTD under specific spike-timing dependent induction protocols<sup>50</sup>.

Astrocytes contribute also to synaptic modulation and plasticity associated with the activity of long-range cholinergic and noradrenergic fibers<sup>32, 51-55</sup> (Fig. 2 and discussed below). Finally, astrocyte signaling to synapses appears to be regulated by immune mediators. Until recently, these molecules were thought to be produced mainly during pathological inflammatory reactions. However, they are also present in the healthy brain, albeit at very low levels, and exert regulatory actions at synapses. For example, depending on the circuit, tumor necrosis factor- $\alpha$  (TNF $\alpha$ ) can favor membrane insertion or internalization of AMPAR subunits at excitatory synapses<sup>56, 57</sup>. Through these effects, TNF $\alpha$  contributes to synaptic scaling, a form of homeostatic plasticity by which a population of synapses collectively adjusts its strength to long-term variations in network activity, e.g. during plastic rearrangement of sensory circuits<sup>58, 59</sup>. TNF $\alpha$  also affects synaptic strength through regulation of astrocyte glutamate release (Fig. 2 and 4c). In the hippocampal dentate gyrus, astrocytic stimulation transiently boosts excitatory synaptic transmission via glutamate release and downstream activation of stimulatory pre-synaptic NMDA receptors<sup>60</sup>. Constitutive levels of the cytokine are necessary and sufficient for the astrocytic input to be synaptically effective<sup>61</sup>. However, when TNF $\alpha$  levels increase in pathological conditions, the astrocytic input changes and causes long-lasting

increase of synaptic strength<sup>62</sup> (see below). Overall, astrocyte signaling via multiple surface receptor types and released transmitters contributes to the establishment of several forms of synaptic plasticity in various memory-relevant hippocampal and cortical circuits.

### **Astrocytes sense brain states and modulate neuronal ensembles**

So far, we have discussed the involvement of astrocyte signaling in the plasticity of local synapses. However, cognitive functions emerge from more mesoscale processes involving coordinated activity of ensembles of neurons and synaptic circuits<sup>63</sup>. Neuronal network responses to external stimuli are regulated by brain states, and state-dependent excitability of neuronal networks is associated with specific cognitive functions. Neuromodulators, which produce spatially diffuse and slower effects than transmitters at fast excitatory or inhibitory synapses, are implicated in the generation of brain states. Intriguingly, neuromodulators' actions involve activation of the astrocytic networks (Fig. 3a). Arousal, associated with activation of the locus coeruleus and widespread noradrenaline release, activates astrocytes in projection areas. This increases the responsiveness of astrocyte networks to local cortical activity<sup>64</sup>, suggesting that arousal increases the gain of such networks to perceive external stimuli and modulate neuronal function. Indeed, activation of astrocytic  $\alpha 1$  receptors by noradrenaline triggers the release of D-serine and ATP, which facilitate LTP induction of layer 2/3 excitatory synapses in the somatosensory cortex<sup>51</sup>. Acetylcholine, which is released during vigilance state by long-range cholinergic fibers (modulating attention and learning), also activates astrocyte networks and promotes astrocyte-mediated neuronal modulation<sup>32, 52, 53, 55, 65</sup>. Acetylcholine-activated astrocytes release D-serine at excitatory synapses, including at CA3-CA1 hippocampal synapses<sup>32</sup> and somatosensory synapses<sup>53</sup>, to enhance NMDAR activity and NMDAR-dependent functions. Alternatively, they can release glutamate, which excites CA1 pyramidal neurons<sup>65</sup> and inhibits dentate granule cells via intermediary GABAergic interneurons<sup>54</sup>. In addition, cholinergic input to astrocytes can induce LTP of glutamatergic transmission when cholinergic fibers and CA3-CA1 synapses are coincidentally active<sup>52</sup>.

Both noradrenaline and acetylcholine regulate brain-wide oscillations, which are hallmarks of synchronization of different brain areas and are important for cognitive performance and sensory perception<sup>14</sup>. Interestingly, astrocytes have been recently reported to control neuronal oscillations in several ways (Fig. 3b). At the cortical level, they contribute to the generation of slow-wave oscillations (<1 Hz), which occur prominently during NREM sleep and have been associated with memory consolidation<sup>66</sup>. These slow oscillations result in neuronal up- and down-states. Astrocytic  $\text{Ca}^{2+}$  signaling modulates up-state generation *in situ*<sup>67</sup>, whereas genetic suppression of gliotransmitter release reduces the power of slow-wave oscillations *in vivo*<sup>68</sup> (see below). Recently, studies using astrocyte-specific optogenetic stimulation have revealed a role for these cells in promoting the transition from high-frequency to low-frequency oscillatory states<sup>69</sup>. Stimulated astrocytes induce a localized increase in extracellular glutamate (likely gliaderived) that increases co-active neuronal firing. Such astrocytic input acts as an instructive synchronizing



signal for neuronal ensembles and triggers a switch of the cortical circuit to a slow-wave oscillation-dominated state<sup>69</sup> (Fig. 3b).

Astrocytes modulate oscillatory patterns also in other frequency ranges, such as in the gamma range (25-80 Hz). Both inhibitory and stimulatory effects have been reported in the hippocampus. The former was produced by optogenetic activation of astrocytes and involves coordinated control of pyramidal cell and CCK-positive interneuron excitability by astrocyte-released ATP/adenosine<sup>70</sup>. The latter was observed in mice with genetically-induced suppression of astrocytic exocytosis, which showed reduced EEG power in the gamma frequency range *in vivo* and this was associated with impairment of carbachol-induced gamma oscillations *in vitro*<sup>71</sup>. The control of such network activity by glia likely depends on astrocytic stimulation by GABAergic interneurons, as astrocyte-specific GABA<sub>B</sub> knockout mice show reduced theta and gamma power *in vivo*<sup>72</sup>. Thus, sustained interneuron firing in the hippocampus induces astrocyte GABA<sub>B</sub> signaling, which triggers gliotransmission and thereby controls the oscillatory activity of the neuronal network<sup>72</sup>. Additionally, astrocytes contribute to the coordinated activity across brain regions, as mice with disrupted astrocytic exocytosis exhibit disordered hippocampal-prefrontal theta synchronization<sup>6</sup>.

Astrocytes may mediate synchronization of neuronal ensembles in multiple ways. For instance, by releasing glutamate simultaneously onto several neighboring neurons and coordinately increasing their excitability via activation of extra-synaptic NMDAR<sup>73</sup> and other glutamate receptors<sup>74</sup>. Importantly, direct dendritic recordings from hippocampal CA1 pyramidal neurons show that astrocytic glutamate does target neuronal dendrites and could be the source of dendritic plateau potentials<sup>75</sup> implicated in localized plasticity and spatial memory formation<sup>76</sup>. Astrocytes can also release glutamate onto axons and their terminals, and thereby modulate axonal conduction, broaden action potentials<sup>74</sup>, or transiently increase presynaptic transmitter release<sup>46, 60, 77, 78</sup>. Since axonal/synaptic stimulation is a potent way to synchronize neurons, astrocytes may promote network coordination by acting simultaneously on many afferent fibers or synapses. In addition, they can extend their influence on neuronal domains by forming astrocytic domains via gap-junction connectivity. This astrocytic connectivity seems important for coordinating activation and for synchronizing bursting of the neuronal networks<sup>79</sup>. Overall, astrocytic signaling pathways emerge as relevant contributors to the generation and regulation of various network oscillatory rhythms and, by sustaining the action of neuromodulators, in tuning them according to brain states.

### **Astrocyte signaling in memory processes and in the memory function of sleep**

Recent studies have linked astrocyte signaling at synaptic or network levels to cognitive performances in animals and have provided direct evidence that cognitive processing requires coordinated activity of synaptic ensembles and astrocytes. Consistent with this notion, chemogenetic activation of astrocytes in relevant circuits can affect memory performance<sup>7, 80</sup>. Gq-DREADD (Designer Receptor Exclusively Activated by a Designer Drug) activation in astrocytes of the medial central amygdala caused extinction of learned fear memory in a paradigm of cued fear conditioning<sup>80</sup>. The effect was ascribed to astrocyte-released

adenosine reducing firing of medial central amygdala neurons by joint stimulation of the inhibitory inputs from lateral central amygdala (via  $A_{2A}$  receptors) and inhibition of the excitatory inputs from basolateral amygdala (via  $A_1$  receptors). In another study, optogenetic and chemogenetic activation of the Gq astrocytic signaling pathway in the hippocampus were sufficient to enhance memory allocation and cognitive performance<sup>7</sup>. While these data showed that astrocytic activation can drive neuronal circuits to modulate memory performance, they did not prove yet that astrocytes are activated during physiological memory processes. However, studies using mouse genetics or pharmacological approaches to suppress specific signaling pathways exclusively in astrocytes provided such evidence (Fig. 4). A first study identified a necessary role for L-lactate in long-term episodic memory by pharmacological inhibition of its production in astrocytes<sup>37</sup>. The manipulation both suppressed CA3-CA1 LTP *in vivo* (see above) and impaired long-term memory formation in an inhibitory avoidance task, and these effects were rescued by administration of exogenous L-lactate<sup>37</sup>. The same impairment was produced by knock-down of the monocarboxylate transporters (MCTs) that shuttle L-lactate from astrocytes (MCT1 and MCT4) to neurons (MCT2)<sup>37</sup>. One of the neuronal functions requiring L-lactate is the *de novo* protein synthesis that maintains LTP and fosters memory consolidation<sup>37, 39, 81</sup>. More recently, noradrenaline acting on  $\beta_2$ -adrenergic receptors was identified as one of the stimuli leading to L-lactate production during memory processing<sup>82, 83</sup>.

Noradrenaline has long been known to potentiate LTP and hippocampal memory via  $\beta$  receptors, but the recent work has shown that relevant  $\beta_2$ -adrenoceptors are expressed on astrocytes, not neurons (Fig. 2). Thus, astrocyte-specific knock-down of the receptors<sup>82</sup> prevented memory consolidation, and this effect was rescued by local L-lactate supply in the hippocampus<sup>83</sup>. These data are significant because they link the known positive effect of arousal (and thus noradrenaline release) on memory performance to the finding that a key part of the noradrenergic effect is mediated by astrocytes. Similarly, noradrenaline release during acute stress activates astrocytic  $\beta_2$ -adrenoceptors receptors<sup>84</sup>. Stress stimuli can both enhance and decrease cognitive performance depending on their severity and duration, and it is possible that this distinction may reflect the duration and extent of astrocyte activation by during stress. A recent study showed that administration of a  $\beta_2$  agonist over days improves memory performance by up-regulating the astrocytic L-lactate export pathway, whereas with longer applications the drug causes internalization of  $\beta_2$ -adrenoceptors and decreases cognitive ability, likely by reducing astrocytic L-lactate supply to neurons<sup>84</sup>.

Astrocytes also participate in hippocampus-dependent memory formation by controlling the availability of D-serine for synaptic NMDAR activation<sup>7, 32, 48</sup> (see above). At least two distinct astrocytic pathways promote this effect, one engaging  $\alpha_7$  nicotinic receptors<sup>32</sup>, the other CB1 receptors<sup>48</sup>. The first pathway depends on the state of vigilance and is mediated by activation of septal cholinergic fibers (see above), which in turn stimulate  $\alpha_7$  receptors on hippocampal astrocytes (and not in neurons) to promote D-serine release, thereby boosting NMDAR activation at CA3-CA1 synapses<sup>32</sup>. Indeed, NMDAR co-agonist site occupancy positively correlated with D-serine levels dictated by the wake/sleep cycle, being maximal during wakefulness (dark period for mice). This astrocyte-dependent control of D-serine release had behavioral

consequences, as the strength of fear memory in a contextual fear-conditioning task was higher in dark than in light periods<sup>32</sup>, suggesting that astrocytes may convey the vigilance input to enhance memory performance (Fig. 3a). In the second pathway, signaling via astrocyte CB1 receptors affects hippocampus-dependent memory by boosting D-serine-mediated NMDAR activation at CA3-CA1 synapses (Fig. 4a). Deletion of astrocytic CB1 receptors reduced NMDAR co-agonist binding site occupancy, suppressed CA1 LTP *in vivo* (see above) and impaired recognition memory; these effects were rescued by administration of exogenous D-serine or pharmacological blockade of D-serine catabolism<sup>48</sup>. Importantly, exogenous D-serine was effective when administered immediately after memory acquisition but not 1 hour later, indicating that astrocyte CB1 signaling is engaged in the early phase of memory consolidation<sup>48</sup>. Accordingly, astrocyte-specific optogenetic activation of a light-sensitive Gq-coupled receptor (OptoGq) increased memory acquisition only during the learning phase<sup>7</sup>.

Another study confirmed the role of astrocyte signaling in recognition memory<sup>71</sup>. In transgenic mice with inducible tetanus toxin expression selectively in astrocytes (Table 1), the resulting suppression of astrocytic exocytosis impaired both gamma frequency oscillations *in vivo* (see above) and performance in the novel object recognition task. Both effects were reversed by stopping tetanus toxin expression in astrocytes<sup>71</sup>. Similarly, dnSNARE transgenic mice lacking regulated exocytosis in astrocytes display both altered hippocampal/prefrontal synchronization and defective spatial learning and reference memory<sup>6</sup>.

Astrocytes also contribute to the memory function of sleep. Sleep promotes memory consolidation (reviewed in<sup>85</sup>), particularly during early night NREM phases, which are rich in cortical slow-wave oscillations. This consolidation refines memory engrams by establishing long-lasting forms of synaptic potentiation (L-LTP) for memories to be retained, while simultaneously reducing less-relevant memories via synaptic depression and downscaling of established synapses<sup>86, 87</sup>. Sleep deprivation impairs memory consolidation by interfering with the above processes. During prolonged wakefulness the need to sleep increases due to progressive increase in the levels of adenosine, a sleep-inducing molecule (reviewed in<sup>88</sup>). If the wake period is excessively long, adenosine levels in the following sleep period decay slower than normal. Adenosine was long believed to be produced by neurons, but recent work<sup>35</sup> using dnSNARE transgenic mice challenged this idea and suggested instead an astrocytic origin. These mice lack regulated exocytosis in astrocytes<sup>35</sup>, including release of the adenosine precursor ATP<sup>89</sup> (see above; see Table 1 and Box 1 for a discussion on the model validity). When sleep-deprived, dnSNARE mice showed no adenosine accumulation, as measured in hippocampal slices<sup>90</sup>, and exhibited much milder phenotypes than control mice, with little alteration of slow-wave cortical oscillations and cognitive performance<sup>91, 92</sup>. Therefore, astrocyte-released adenosine may underlie impaired cognitive function upon sleep deprivation.

A recent study showed that another astrocyte-released molecule, L-lactate, has the opposite role to adenosine, helping maintain normal sleep architecture and, therefore, preserving cognitive performance by supporting the activity of wake-producing orexin neurons in the lateral hypothalamus<sup>40</sup>. Overall, studies

involving selective activation or suppression of given astrocytic signaling pathways have revealed participation of astrocytes to specific types or phases of memory processes. Likewise, astrocyte signaling has a role in the memory function of sleep as well as in the detrimental consequences of sleep deprivation.

### **Astrocytic control of cognitive function goes awry in pathological brain conditions**

The role of astrocytes in synaptic and network processing appears to be plastic and subject to perturbations. In pathological conditions, astrocyte-neuron interactions can undergo dramatic changes, with strong impact on brain circuits supporting memory formation and cognitive function. This is the case in Alzheimer's disease (AD), a pathology characterized by progressive impairment of memory and other cognitive functions such as abstract thinking, judgment, language, and recognition. The notion that astrocytes surrounding  $\beta$ -amyloid (A $\beta$ ) deposits are altered in AD stems from the original description of AD pathology by Alois Alzheimer in 1911. Only recently have the anatomical descriptions been complemented by functional studies. These studies showed an increased expression of several receptors in astrocytes surrounding A $\beta$  sites in both AD mouse models and post-mortem human AD brains, likely affecting the downstream signaling and its synaptic function<sup>93</sup>. Up-regulated receptors included  $\alpha$ 7 nicotinic Ach receptors<sup>94</sup>, Ca<sup>2+</sup>-permeant ligand-gated channels whose up-regulation causes abnormal astrocytic Ca<sup>2+</sup> elevations and massive glutamate release<sup>95, 96</sup>; mGlu5 receptors<sup>97</sup> and P2Y1 receptors<sup>98</sup>, whose enhanced G<sub>q</sub>-IP<sub>3</sub>-dependent Ca<sup>2+</sup> signaling can similarly contribute to astrocytic Ca<sup>2+</sup> alteration; A<sub>2A</sub> adenosine receptors<sup>99</sup>, which instead signal via G<sub>s</sub>-cAMP. A<sub>2A</sub> receptors normally promote "active forgetting", a process that removes irrelevant memories during sleep<sup>100</sup>. However, when excessively activated in AD<sup>99</sup>, A<sub>2A</sub> receptors may accentuate the "forgetting pathway" resulting in reduced memory performance. In line with this, transgenic mice lacking the A<sub>2A</sub> receptor or AD mice treated with an A<sub>2A</sub> antagonist<sup>101</sup> show increased memory (but see<sup>102</sup>), whereas mice in which astrocyte G<sub>s</sub> signaling is selectively stimulated (Table 1) show the opposite<sup>99</sup>. Another signaling aberration seen in reactive astrocytes surrounding A $\beta$  deposits consists in an enhanced synthesis and release of the transmitter GABA<sup>103-105</sup>, which increases tonic inhibition of dentate granule cells with a negative impact on memory processing.

AD patients and AD mouse models display excitation/inhibition circuit imbalances that affect the oscillatory patterns underlying cognitive processing<sup>106, 107</sup>. In mouse models, neurons within the vicinity of A $\beta$  deposition are often hyperexcitable, possibly due to an altered local microenvironment. This could be explained by A $\beta$ -mediated disruptions of glutamate uptake<sup>108</sup>, glutamate release<sup>109</sup> and GABAergic inhibition<sup>110</sup>. Interestingly, astrocytes in apposition to A $\beta$  deposits are also "hyperactive" and display higher resting Ca<sup>2+</sup> level, more frequent and larger Ca<sup>2+</sup> elevations, long-range coordinated Ca<sup>2+</sup> waves that are never seen in control mice<sup>95, 98, 111</sup>, as well as increased gliotransmission<sup>112</sup>. These abnormalities could be due to a direct action of A $\beta$  on astrocytes<sup>113</sup> as well as enhanced receptor-mediated Ca<sup>2+</sup> signaling (see above) and are likely to affect the neuronal network, e.g. by extending the areas of functional alteration and

abnormal synchronization. Preventing excessive  $\text{Ca}^{2+}$  increase/transmitter release from astrocytes might therefore represent a promising strategy for AD therapy. In keeping with this idea, the acetylcholinesterase inhibitor donepezil, which is approved for symptomatic AD treatment, appears to reduce astrocyte  $\text{Ca}^{2+}$  signaling<sup>114</sup>. Moreover, P2Y1R antagonists or genetic suppression of IP3R2-dependent astrocyte  $\text{Ca}^{2+}$  signaling reduce neuron-astrocyte network hyperactivity and ameliorate spatial learning and memory deficits in AD mice<sup>115</sup>.

AD, along with many other CNS pathologies, is characterized by the presence of local intra-parenchymal inflammation. It has been proposed that astrocytic modulation of network activity and cognition undergo deleterious transformation in such inflammatory states. An example of this was observed in the experimental autoimmune encephalitis (EAE) model of multiple sclerosis, where abnormal  $\text{TNF}\alpha$ -dependent signaling by astrocytes causes cognitive deficits resembling those seen in patients<sup>62</sup> (Fig. 4d). In particular, in EAE mice, a local inflammatory focus in dorsal hippocampus caused  $\text{TNF}\alpha$  increases, long-lasting modification of excitatory neurotransmission and impaired contextual memory. These effects depend on enhanced  $\text{TNF}\alpha$  signaling via its astrocytic type-1 receptor (TNFR1), which hijacked the regulatory mechanism controlling astrocytic glutamate release (see above) and caused long-lasting potentiation of excitatory synapses. This synaptic and behavioral phenotype was abolished in global TNFR1 knockout EAE mice and could be restored by inducing re-expression of the receptor solely in astrocytes (Table 1), demonstrating that astrocytes mediate the deleterious action of  $\text{TNF}\alpha$  on memory function in EAE mice<sup>62</sup>.

Based on the role of  $\text{TNF}\alpha$  in promoting inflammation-induced memory impairment, significant efforts have aimed to develop  $\text{TNF}\alpha$  inhibitors for treating CNS diseases. Several such agents have been, or are currently being, tested for disorders including multiple sclerosis and AD, with both success and failures having been reported<sup>58</sup>. Selective blockade of TNFR1 function may be a more promising therapeutic strategy with increased mechanistic specificity<sup>116</sup>. Accordingly, new TNFR1 antagonists with CNS action were effective in reversing enhanced glutamatergic transmission in an AD mouse model<sup>117</sup>.

Recently, astrocytes have been implicated in the development of drug addiction. The astrocytic role in addiction appears to involve altered D-serine and L-lactate signaling which in turn perturbs physiological synaptic plasticity and memory. Hence, instalment of the addictive behavior occurs via formation of “maladaptive memories” in the mesocorticolimbic reward circuitry - ventral tegmental area (VTA) and nucleus accumbens (NAc) - that take over the normal memory processes activated by natural rewards. For example, cocaine alters glutamatergic function in the NAc by modifying the AMPAR/NMDAR currents ratio and by impairing LTP and LTD<sup>118</sup>. As astrocytes influence glutamatergic transmission in the NAc<sup>118, 119</sup>, they could participate in these changes. Consistently, cocaine treatment leads to reduced D-serine levels in the NAc, which could explain the reduced NMDAR-dependent synaptic plasticity associated with cocaine treatment (both LTP and LTD<sup>119, 120</sup>). In keeping, exogenous D-serine treatment reverts the impaired

plasticity and reduces a number of behavioral manifestations associated to cocaine addiction, including cocaine-induced place preference<sup>121, 122</sup>, reinstatement of cocaine self-administration (relapse)<sup>123</sup> and locomotor sensitization to cocaine<sup>120, 121</sup>. Furthermore, the fact that D-serine treatment can reduce compulsive alcohol intake<sup>124</sup> and that D-serine participates in the mechanisms of morphine addiction<sup>125</sup> suggests a role for altered D-serine signaling in the establishment of addictive behavior at large. Therefore, compounds acting on D-serine metabolism hold promise for the treatment of addictions<sup>118</sup>. Astrocyte signaling via L-lactate appears likewise involved in the formation of maladaptive memories and reinstatement of drug addiction. Accordingly, pharmacological inhibition of astrocyte L-lactate release prevents cocaine relapse by persistently disrupting cocaine-induced conditioned place preference<sup>126, 127</sup>.

Cannabis-induced disruption of working memory also appears to be astrocyte-mediated (Fig. 4b). Specifically, systemic treatment with  $\Delta^9$ -tetrahydrocannabinol (THC, the main active compound of marijuana), causes LTD of CA3-CA1 hippocampal synapses and impaired working memory *in vivo*<sup>44</sup>. Strikingly, parallel tests conducted on astrocyte-specific and neuron-specific CB1R knock-out mice (Table 1) demonstrated that astrocytic, not neuronal, CB1Rs are essential mediators of both the plasticity and behavioral memory effects of THC<sup>44</sup>. These findings demonstrate not only that astrocyte-dependent LTD underlies THC-induced working memory impairment, but also that THC “hijacks” the astrocyte CB1 signaling pathway normally involved in CA3-CA1 LTP and memory formation<sup>48</sup>.

In summary, various astrocytic signaling pathways, some of which with recently identified roles in synaptic, network and memory functions, undergo profound changes in CNS disorders characterized by cognitive alterations. Their mechanistic contributions to specific conditions start to be unraveled, notably via mouse genetics studies.

## CONCLUSIONS

We here presented evidence that astrocytes are actively involved in normal memory functions as well as in the abnormal processes leading to cognitive impairment in pathological conditions. In many of the presented cases, our understanding of the astrocytic involvement is still incomplete and more work is required to confirm these findings and better elucidate the specific role played by astrocytes and the precise targets and mechanisms of their action. The notion that astrocytes integrate neuronal function at synaptic and network levels to influence behavior is rather new, particularly because these cells have long been thought to be largely unable of communication and computing. Only recent findings using state-of-the-art approaches with an *ad hoc* design to study astrocytes paint a different picture. For example, dynamic cellular imaging work<sup>12, 13</sup> reveals an unexpected functional complexity of astrocytes and an intimacy of their interactions with neurons, while astrocyte-targeted mouse genetics boosts the case for astrocyte participation in memory processes, as reviewed here. While leading to these breakthroughs, the

technical advances also highlight the incompleteness of our comprehension of astrocyte biology, illustrated also by numerous ongoing controversies in the field<sup>2, 4, 5</sup>. This calls for development of even better astrocyte-specific investigation tools, techniques, and experimental designs to resolve these controversies and bridge the current gap of knowledge.

How may astrocyte interactions with synapses and networks influence neuronal activity and memory performance? Considering the spatial-temporal properties of astrocyte signaling as we currently understand them, there appear to be at least four possible spatial scales of interaction (Fig. 5): first, a nanoscale, at which astrocytes signal in “nanodomains” and may influence local synaptic computations and remodeling<sup>1, 12, 21, 77, 128</sup>; second, a microscale, on the order of a single astrocyte, at which the entire cell activates and may exert a coordinated influence on synaptic ensembles residing in its territory<sup>29, 129</sup>; third, a syncytium scale, at which groups of astrocytes form, via dynamic gap-junction connectivity, functional domains matching domains of neuronal activity and may coordinate the excitability and support the energetic demands of the functional neuronal ensembles<sup>40, 79</sup>; and fourth, a mesoscale, at which astrocytes from multiple brain regions respond in concert to the activity of long-range neuronal fibers and may thereby contribute to the generation of brain states. At the temporal scale, astrocytes are currently thought to be unable to modulate synapses at the time scale of synaptic events, and instead are thought to exert slower influences, by tuning basal synaptic properties like transmitter release probability<sup>77, 128</sup> and post-synaptic excitability (Fig. 5a)<sup>2, 73</sup>. These slow temporal properties of astrocytes could be essential during induction of synaptic plasticity, for maintaining the history of past activity and to initiate plastic changes<sup>47</sup>. Intuitively, a multiscale spatial-temporal astrocytic integration with the neuronal network should produce a higher-order organization of the information processing<sup>130</sup>. This is what computational models predict, i.e. that integration of astrocytes improves network performance<sup>131</sup>. In particular, astrocytes would increase firing synchronicity and synaptic coordination<sup>132</sup>, and better tune the networks to oscillatory rhythms underlying memory processing<sup>133</sup>.

Specific roles of astrocytes are currently largely speculative. For example, requirement for L-Lactate during long-term memory consolidation could be in support of the “extra” metabolic needs of the structural remodeling involved in this process. This way, the active metabolic function of astrocytes would be an integral element of brain cognitive function<sup>41</sup>. The fact that L-lactate cannot be substituted in this function by equicaloric glucose<sup>37</sup> hints, however, at additional non-metabolic functions for this molecule. The need for D-serine in the early phases of memory formation and the fact that, by controlling its availability, astrocytes control synaptic NMDAR function according to the sleep/wake cycle, suggests that astrocytes link vigilance state to memory formation. The same may apply to their activation during arousal, which is known to enhance cognitive performance. Along this line, astrocytes might use cytokine signaling to tune cognitive processing to immune states and, even further, by integrating non-neuronal inputs and checking

metabolic, redox, pH, immune or other environmental states, astrocytes could perform their own computations, eventually resulting in instructive signals sent to neurons.

Integration of astrocytic signaling in cognitive processing has implications for understanding the basis of cognitive alterations in pathological conditions. We presented several examples in which altered astrocytic signaling affects synapses, networks and ultimately cognitive performance. These findings suggest that targeting astrocyte pathways may represent an important new therapeutic opportunity to fight against cognitive alterations or decline in many CNS diseases.



## **Acknowledgments**

The authors thank Iaroslav Savtchouk for helpful discussions and support in figure preparation, and Stewart Berry for proofreading of the manuscript. Research in the Volterra laboratory is supported by the ERC Advanced grant 340368 “Astromnesia” and by Swiss National Science Foundation grants 31003A 173124/1, NCCR “Synapsy” (51NF40-158776) and NCCR “Transcure” (51NF40-160620). Mirko Santello is supported by the Swiss National Science Foundation “Ambizione” grant PP00P3\_176838 and by the Novartis Foundation for medical-biological Research grant #17C157. Nicolas Toni is supported by the Swiss National Science Foundation, grant 31003A-173128.

## **Competing Financial Interests statement**

The authors declare no competing financial interests.

## Figure legends

### **Fig. 1 Plasticity of structural interactions between synaptic elements and perisynaptic astrocytic processes (PAPs).**

**Left:** a reduced PAP coverage of synapses, such as occurs in the supraoptic nucleus during lactation<sup>18</sup>, increases glutamate leakage from the synaptic cleft and reduces D-serine availability in the vicinity of the postsynaptic NMDA receptors. Less D-serine in the synaptic cleft reduces the activation of the NMDA receptors and increases the threshold for LTP induction<sup>18</sup>. **Right:** An extensive PAP coverage, such as induced by connexin-3024 or ephrin-425 knockout, enhances the PAP's reuptake of glutamate, which reduces the neurotransmitter availability in the synaptic cleft and impairs LTP expression.

### **Fig. 2 Bidirectional signaling between synaptic elements and PAPs controls synaptic function and plasticity.**

For graphical clarity, the bidirectional signaling is depicted as involving in part the top PAP and in part the bottom PAP. Activity-dependent release of endocannabinoids (eCB) from post-synaptic neurons stimulates both pre-synaptic and astrocytic cannabinoid 1 receptors (CB1Rs). Activation of pre-synaptic CB1R exerts an inhibitory effect on synaptic transmitter release, whereas activation of astrocytic CB1R induces release of glutamate (red dots, top and bottom PAP) and/or D-serine (yellow dots, top PAP). Astrocyte glutamate modulates synaptic transmission and plasticity by activating pre-synaptic mGluRs, pre-synaptic NMDAR, as well as dendritic (extra-synaptic) NMDARs. Depending on the circuit, the effect can be stimulatory or inhibitory<sup>9, 45-50</sup>. Astrocyte D-serine potentiates post-synaptic NMDAR activation<sup>18, 29, 30, 32</sup> and increases the synaptic integration of new neurons generated in the adult hippocampus<sup>33</sup>. Activation of cholinergic (top PAP), purinergic and noradrenergic (bottom PAP) receptors on astrocytes induces release of fast-acting molecules that influence synaptic activity and plasticity via both pre- and post-synaptic mechanisms. In particular, activation of nicotinic  $\alpha 7$  or muscarinic receptors by acetylcholine (ACh) induces, respectively, D-serine<sup>32</sup> and glutamate release<sup>52, 65</sup> with stimulatory synaptic effects mediated by post-synaptic NMDAR (D-serine) and pre-synaptic mGluR (glutamate). Activation of purinergic P2Y1 receptors by ATP induces glutamate release and activation of stimulatory pre-synaptic NMDAR. The P2Y1R-evoked glutamate release is controlled by TNF $\alpha$  via TNFR1 signaling<sup>61</sup> (see also Fig. 4). Activation of  $\beta 2$  adrenoceptors by noradrenaline (NA) increases astrocytic glycogenolysis and production of L-lactate and its shuttling out of the cell by monocarboxylate transporters (MCT)-1 or 4. L-lactate can enter the neurons via MCT2 or act on putative membrane receptors<sup>37, 82, 83</sup>, inducing metabolic and/or signaling effects possibly involving control of NMDAR function.

### **Fig. 3 Astrocytes modulate neuronal network oscillations and contribute to memory performance. a.**

Astrocytes stimulated by acetylcholine (during vigilance)<sup>27, 32, 52, 65</sup> or noradrenaline (during arousal)<sup>64</sup> are

primed by the brain state and contribute to functional changes such as long-term plasticity of synaptic networks and enhanced memory performance<sup>51, 82, 83</sup>. The noradrenergic input from locus coeruleus increases astrocyte responsiveness to local circuit activity in the cortex<sup>64</sup> whereas the septal cholinergic input boosts hippocampal memory through astrocyte activation<sup>32</sup>. Activated astrocytes depicted in green.

**b.** Activation of astrocytes drives coordination of the activity of neuronal networks and their switch from desynchronized to oscillatory states, including slow-wave oscillations that are important for memory consolidation<sup>67-69</sup> and gamma oscillations that enhance recognition memory<sup>70-72</sup>. Activated astrocytes depicted in green; desynchronized neurons depicted in different colors corresponding to the different times of their firing; synchronous-firing neurons all depicted in orange, corresponding to their oscillatory up-states.

**Fig. 4: Effects of astrocyte signaling on hippocampus-dependent memory pathways in physiological and pathological conditions**

**a.** During the induction of long-term synaptic potentiation (LTP) via high-frequency stimulation at CA3-CA1 synapses (1,2), endocannabinoids (eCB) are released in an activity-dependent manner from postsynaptic neurons (3). eCB activate CB1 receptors (CB1R) on astrocytes (4) and induce D-serine release (5), which is necessary for NMDAR-dependent LTP of the synapses (6)<sup>48</sup>. Appropriate recognition memory performance requires such astrocyte signaling<sup>48</sup>. **b.** In a pathology-related setting, injection of THC, the major cannabinoid component of marijuana, causes activation of astrocyte CB1Rs (1), but in this case the downstream signaling activated is different and leads to LTD of CA3-CA1 synapses and impaired working memory<sup>44</sup>. This effect seems to involve astrocyte glutamate release (2), activation of extrasynaptic NR2B-containing NMDARs (3) and, eventually, internalization of AMPAR (4). **c.** Astrocytes control synaptic transmitter release probability at perforant path-granule cell synapses in the dentate gyrus<sup>61</sup>, a key pathway for context discrimination. Activity of these excitatory synapses leads to stimulation of purinergic P2Y1 receptors (P2Y1R) on astrocytes (possibly by synaptically co-released ATP) (1), which induce glutamate release (2) via a processes controlled by constitutive TNF $\alpha$  signaling via TNFR1 (1). Astrocytic glutamate acts on pre-synaptic NR2B-containing NMDAR (3) to transiently up-regulate synaptic transmitter release (4) and increase frequency of AMPAR-mediated synaptic events (5)<sup>60</sup>. Studies in TNF $\alpha$  and TNFR1 knockout mice indicate that cytokine signaling is necessary for appropriate hippocampus-dependent memory<sup>58</sup>. **d.** During brain inflammation, however, massive increase in TNF $\alpha$  released by activated microglia and/or infiltrated immune cells and overstimulation of astrocyte TNFR1 (1) leads to excess glutamate release (even in the absence of P2Y1R stimulation) (2), pre-synaptic NMDAR activation (3). The final effect is a long-lasting enhancement of synaptic transmitter release (4) resulting in impaired contextual memory<sup>62</sup>.

**Fig. 5 Multiscale spatial-temporal integration of astrocytes with synaptic and neuronal networks. a.**

Communication between neurons and astrocytes occurs on temporal scales (secs to min) distinct from neuronal firing and fast excitatory or inhibitory synaptic transmission (msec) and likely serves different functions, such as tuning synaptic outputs, inducing long-term changes in synaptic gain, promoting network synchronicity. **b.** At the spatial nanoscale, local signaling in astrocytic PAMPs can target pre-synaptic terminals to change synaptic transmitter release probability, or post-synaptic ones, to change neuronal excitability. **c.** At the microscale level, an individual active astrocyte can affect coordinately multiple synapses sitting in its territory (different colors denote that synapses belong to different neurons), e.g. by simultaneous multi-site release of modulatory transmitters. **d.** At a syncytium scale, groups of astrocytes can form dynamic networks via gap-junction connectivity (green) to match domains of highly active neurons (orange) and support or regulate their function. **e.** At the mesoscale level, populations of astrocytes in different brain areas can respond in concert to activity of long-range neuronal projections, such as noradrenergic fibers from locus coeruleus, to mediate the influence of brain state on complex behaviors, including cognitive performance.

**Table 1: List of mouse lines that target astrocytes, highlighting their caveats and strategies used to circumvent them**

Driver	Full construct	Gene manipulation	Comments	References
None	IP3R2 <sup>-/-</sup>	Constitutive ubiquitous ablation of IP3R2 and lack of downstream Ca <sup>2+</sup> signaling	A full KO may induce compensations. IP3R2 KO does not block thapsigargin-induced Ca <sup>2+</sup> rise. The efficiency at blocking Ca <sup>2+</sup> rises has not been examined in fine, perisynaptic processes in which recent work suggests the presence of additional sources of Ca <sup>2+</sup> elevation <sup>4</sup> . The potential presence and role of IP3R2 in non-astrocytic cells has not been evaluated	27, 52, 134
	GFAP-Srr	Overexpression of serine racemase in GFAP <sup>+</sup> cells	Same comments as above. Serine racemase is involved in the biosynthesis of other D-amino acids, involving confounding factors.	135
Cre	GFAP-Cre x IP3R2 <sup>f/f</sup> Or A2AR <sup>f/f</sup>	Lack of IP3R2-dependent Ca <sup>++</sup> signaling or of A2A receptor in astrocytes	The construct does not enable a time control of the recombination. Therefore, recombination may be expected in neurons. The absence of recombination in neurons was evaluated by immunofluorescence In <sup>99</sup> , and by PCR on FACS-sorted cells in <sup>102</sup>	28, 99, 102, 136
CreERT2	GLAST-CreERT2 x Adrb2 <sup>f/f</sup> or GluA1-GluA4 <sup>f/f</sup> or Gabbr1 <sup>f/f</sup>	Lack of β2-adrenergic receptors, GluA1 and GluA4 subunits of AMPA receptors, or GABAb receptors	The efficiency of the inducible KO approach was assessed by qPCR on sorted astrocytes <sup>82</sup> , electrophysiology and immunohistochemistry <sup>137</sup> and the absence of recombination in neurons was verified by electrophysiology in <sup>72</sup>	72, 82, 137
	GFAP-CreERT2 x CB1R <sup>f/f</sup>	Lack of cannabinoid CB1R in astrocytes	The deletion of CB1R in astrocytes and the absence of recombination in neurons were confirmed by immuno-electron microscopy. The deletion of CB1R in neurons did not induce a phenotype, supporting the specificity of the phenotype for astrocytic CB1R.	44
	GFAP-CreERT2 x TNFR1 <sup>creo/creo</sup>	TNFR1 knockout with inducible re-expression of the receptor in astrocytes	The specificity of the construct for astrocytes was examined with immunofluorescence and PCR. Only about 0.7 % of recombined cells in the dentate gyrus were neurons, originating from endogenous GFAP-expressing neural stem cells.	62
	GFAP-CreERT2 x Srr <sup>f/f</sup>	Suppression of serine racemase in astrocytes	No reporter was used, so the number of targeted astrocytes is unknown. Neuronal or astrocytic knock out of serine racemase did not reduce D-serine brain content, suggesting the existence of a compensatory mechanism.	31
	GLAST-CreERT2 x STOP <sup>fl/fl</sup> -iBOT	Expression of a Botulinum toxin isoform blocking secretion in astrocytes	The authors <sup>33</sup> found similar effects of dnSNARE mouse (below) and iBOT mouse on adult neurogenesis. Furthermore, the effect of transgene expression on synapse formation was locally restricted to transgene-expressing astrocytes, confirming the astrocytic specificity of the manipulation	33, 36
tTA-tetO	GFAP-tTA x tetO-MrgA1	Stimulation of Gq-GPCR signaling in astrocytes	The specific expression in astrocytes was verified by immunofluorescence. Long Ca <sup>2+</sup> events have been assessed in the soma and processes, but it is unclear whether the construct enables fast local Ca <sup>2+</sup> dynamics in fine processes and gliapil as observed with endogenous Gq-GPCR signaling <sup>4, 77</sup> .	134, 138
	GFAP-tTA			99

	x tetO-Rs1	Chemogenetic activation of astrocyte Gs-coupled signaling	The specific expression in astrocytes was verified by immunofluorescence. About 12% of astrocytes express the synthetic Gs protein.	
	GLT1-tTA- x tetO-“IP3-sponge”	Attenuation of IP3-dependent Ca <sup>++</sup> signaling in astrocytes	Animals of this study were never treated with doxycycline, which induced constitutive transgene expression with possible compensation. Due to the expression of the GFAP promoter in neuroblasts, a residual sponge expression in immature neurons is likely. Possible side effects of the sponge were not controlled for.	27
	GFAP-tTA x tetO-dnSNARE	Expression of a dominant negative VAMP2 that suppresses regulated secretion in astrocytes	Results from Ref <sup>139</sup> suggest possible transgene mRNA transcription in immature neurons, although the effect of this low transcription has not been assessed on protein expression, neither on vesicular release. See box 1 text above for further discussion.	32, 35, 68, 91, 92, 139
tTA/tetO and CreERT2	GFAP-tTA x GFAP-CreERT2 x tTA-STOP <sup>f/f</sup> - TeNT-GFP	Inducible and reversible expression of Tetanus toxin blocking secretion in astrocytes	The block of glutamate exocytosis from astrocytes was demonstrated by sniffer cells.	71

### **Box 1 – Genetic models to study astrocyte signaling in memory processes**

Several mouse models have been used to address the contribution of astrocyte signaling to memory processes. For the simplest models, such as the widely used IP3R2 knockout mice<sup>138</sup>, the astrocyte-specificity relies on the assumption that the protein is expressed exclusively in astrocytes. This assumption requires convincing evidence, including a demonstration of differential expression of the protein in astrocytes versus other CNS cell populations<sup>140, 141</sup>. More specific models are based on strong, astrocyte-specific promoters and controllable transgene expression.

A number of promoters such as hGFAP, GLAST, GLT1, CX43 and FGF3, are considered selectively active in astrocytes<sup>142</sup>. However, their efficiency can vary greatly between astrocytes and between brain regions<sup>143</sup> and it can be useful to verify their expression for the defined CNS area (for example using reporters such as GFP) and animal age of interest. Promising in this respect is the recent availability of the AldH1L1 promoter, which seems to have widespread CNS efficiency<sup>144, 145</sup>. Another critical aspect of these promoters is that most of them are active in neural stem cells and therefore, astrocyte-specificity is only guaranteed after development, when stem cells have evolved into their mature progenies.

With regard to controllable transgene expression, both the CreERT2/loxp<sup>146, 147</sup> and the tTA/tetO systems<sup>148</sup> provide temporal control of gene manipulation, which is necessary to overcome the developmental issue. However, gene manipulation may still occur in adult neural stem cells in the sub-granular zone of the hippocampus and the sub-ventricular zone. Consequently, validation of an astrocyte-dependent phenotype in an area that sustains adult neurogenesis requires careful controls, for example by using a coherent timing between transgene expression and phenotype<sup>62</sup>. In the future, a better understanding of gene expression in adult neural stem cells will enable the use of astrocytic promoters that are not expressed in the precursor cell population<sup>149</sup>. In contrast, in non-neurogenic brain areas, the CreERT2 system driven by an astrocytic promoter<sup>143, 150</sup> of verified specificity is highly reliable, and cognitive phenotypes described in these areas can be attributed to astrocyte signaling. The tTA/tetO system resembles the CreERT2/LoxP system in allowing for inducible gene manipulation, with the disadvantage of a slower time-course and the advantage of a reversible effect. This is the system used to create the dnSNARE mouse model<sup>35</sup>. Although this model has been recently criticized<sup>139</sup> based on a reported leakage of dnSNARE expression in neurons, several other studies have not observed this leakage<sup>32, 33, 89</sup>. Further, the dnSNARE mouse colonies used in the critical study<sup>139</sup> were different from those used by the other groups, who all relied on the colony originally described<sup>35</sup>. It is therefore possible that a divergence occurred between colonies, a known and serious problem in mouse genetics.

Regardless of the strategy, the timing of the experiments is also important. For example, protein knockout is efficiently achieved when not only de-novo synthesis of the protein of interest is abolished but also degradation of the existing protein is complete<sup>137</sup>.

## References

1. Araque, A., Parpura, V., Sanzgiri, R.P. & Haydon, P.G. Tripartite synapses: glia, the unacknowledged partner. *Trends Neurosci* **22**, 208-15 (1999).
2. Araque, A. et al. Gliotransmitters travel in time and space. *Neuron* **81**, 728-39 (2014).
3. Chung, W.S., Allen, N.J. & Eroglu, C. Astrocytes Control Synapse Formation, Function, and Elimination. *Cold Spring Harb Perspect Biol* **7**, a020370 (2015).
4. Savtchouk, I. & Volterra, A. Gliotransmission: Beyond Black-and-White. *J Neurosci* **38**, 14-25 (2018).
5. Volterra, A., Liaudet, N. & Savtchouk, I. Astrocyte Ca<sup>2+</sup>(+) signalling: an unexpected complexity. *Nat Rev Neurosci* **15**, 327-35 (2014).
6. Sardinha, V.M. et al. Astrocytic signaling supports hippocampal-prefrontal theta synchronization and cognitive function. *Glia* **65**, 1944-1960 (2017).
7. Adamsky, A. et al. Astrocytic Activation Generates De Novo Neuronal Potentiation and Memory Enhancement. *Cell* **174**, 59-71 e14 (2018).  
**By using chemogenetic and optogenetic tools, this study demonstrates that astrocyte stimulation promotes hippocampal long-term synaptic potentiation. Astrocytic activation during memory acquisition is also sufficient to improve memory retrieval, hence proving that astrocytes are capable of producing cognitive-enhancing effects.**
8. Pannasch, U. & Rouach, N. Emerging role for astroglial networks in information processing: from synapse to behavior. *Trends Neurosci* **36**, 405-17 (2013).
9. Martin, R., Bajo-Graneras, R., Moratalla, R., Perea, G. & Araque, A. Circuit-specific signaling in astrocyte-neuron networks in basal ganglia pathways. *Science* **349**, 730-4 (2015).
10. Mariotti, L. et al. Interneuron-specific signaling evokes distinctive somatostatin-mediated responses in adult cortical astrocytes. *Nat Commun* **9**, 82 (2018).
11. Covelo, A. & Araque, A. Neuronal activity determines distinct gliotransmitter release from a single astrocyte. *Elife* **7** (2018).
12. Bindocci, E. et al. Three-dimensional Ca<sup>2+</sup> imaging advances understanding of astrocyte biology. *Science* **356** (2017).
13. Stobart, J.L. et al. Cortical Circuit Activity Evokes Rapid Astrocyte Calcium Signals on a Similar Timescale to Neurons. *Neuron* (2018).
14. Wang, X.J. Neurophysiological and computational principles of cortical rhythms in cognition. *Physiol Rev* **90**, 1195-268 (2010).
15. Kandel, E.R., Dudai, Y. & Mayford, M.R. The molecular and systems biology of memory. *Cell* **157**, 163-86 (2014).
16. Ghezali, G., Dallerac, G. & Rouach, N. Perisynaptic astroglial processes: dynamic processors of neuronal information. *Brain Struct Funct* **221**, 2427-42 (2016).
17. Genoud, C. et al. Plasticity of astrocytic coverage and glutamate transporter expression in adult mouse cortex. *PLoS Biol* **4**, e343 (2006).
18. Panatier, A. et al. Glia-derived D-serine controls NMDA receptor activity and synaptic memory. *Cell* **125**, 775-84 (2006).
19. Lushnikova, I., Skibo, G., Muller, D. & Nikonenko, I. Synaptic potentiation induces increased glial coverage of excitatory synapses in CA1 hippocampus. *Hippocampus* **19**, 753-62 (2009).
20. Sakers, K. et al. Astrocytes locally translate transcripts in their peripheral processes. *Proc Natl Acad Sci U S A* **114**, E3830-E3838 (2017).
21. Bernardinelli, Y. et al. Activity-dependent structural plasticity of perisynaptic astrocytic domains promotes excitatory synapse stability. *Curr Biol* **24**, 1679-88 (2014).  
**This study showed that induction of Ca<sup>2+</sup> transients in astrocytes increases PAPs motility and results in enhanced spine stability. Of note, PAPs were activated at single synapses, resulting in an increased astrocytic coverage and stability of these spines and not of neighboring spines that were contacted by non-activated PAPs.**
22. Perez-Alvarez, A., Navarrete, M., Covelo, A., Martin, E.D. & Araque, A. Structural and functional plasticity of astrocyte processes and dendritic spine interactions. *J Neurosci* **34**, 12738-44 (2014).



23. Ostroff, L.E., Manzur, M.K., Cain, C.K. & Ledoux, J.E. Synapses lacking astrocyte appear in the amygdala during consolidation of Pavlovian threat conditioning. *J Comp Neurol* **522**, 2152-63 (2014).
24. Pannasch, U. et al. Connexin 30 sets synaptic strength by controlling astroglial synapse invasion. *Nat Neurosci* **17**, 549-58 (2014).  
**By using connexin 30 KO mice, this study found that connexin 30, an astrocyte protein known for its role in gap junctions, is also involved in PAP ensheathment of synapses. An increased synaptic ensheathment is associated with reduced synaptic strength and LTP expression in the hippocampus.**
25. Filosa, A. et al. Neuron-glia communication via EphA4/ephrin-A3 modulates LTP through glial glutamate transport. *Nat Neurosci* **12**, 1285-92 (2009).
26. Murai, K.K., Nguyen, L.N., Irie, F., Yamaguchi, Y. & Pasquale, E.B. Control of hippocampal dendritic spine morphology through ephrin-A3/EphA4 signaling. *Nat Neurosci* **6**, 153-60 (2003).
27. Tanaka, M. et al. Astrocytic Ca<sup>2+</sup> signals are required for the functional integrity of tripartite synapses. *Mol Brain* **6**, 6 (2013).
28. Petravicz, J., Boyt, K.M. & McCarthy, K.D. Astrocyte IP3R2-dependent Ca(2+) signaling is not a major modulator of neuronal pathways governing behavior. *Front Behav Neurosci* **8**, 384 (2014).
29. Henneberger, C., Papouin, T., Oliet, S.H. & Rusakov, D.A. Long-term potentiation depends on release of D-serine from astrocytes. *Nature* **463**, 232-6 (2010).
30. Yang, Y. et al. Contribution of astrocytes to hippocampal long-term potentiation through release of D-serine. *Proc Natl Acad Sci U S A* **100**, 15194-9 (2003).
31. Benneyworth, M.A., Li, Y., Basu, A.C., Bolshakov, V.Y. & Coyle, J.T. Cell selective conditional null mutations of serine racemase demonstrate a predominate localization in cortical glutamatergic neurons. *Cell Mol Neurobiol* **32**, 613-24 (2012).
32. Papouin, T., Dunphy, J.M., Tolman, M., Dineley, K.T. & Haydon, P.G. Septal Cholinergic Neuromodulation Tunes the Astrocyte-Dependent Gating of Hippocampal NMDA Receptors to Wakefulness. *Neuron* **94**, 840-854 e7 (2017).  
**This study shows that astrocyte-derived D-serine levels oscillate according to sleep-wake cycles and this influences learning and memory performance.**
33. Sultan, S. et al. Synaptic Integration of Adult-Born Hippocampal Neurons Is Locally Controlled by Astrocytes. *Neuron* **88**, 957-972 (2015).  
**By using two different approaches to block vesicular release specifically in astrocytes, this study found that D-serine produced by astrocytes enables the unsilencing of new neurons in the adult hippocampus, dendritic spines formation and their integration in the network. Interestingly, this effect was seen only on dendritic segments that crossed the territories of transgene-expressing astrocytes, indicating a local effect of individual astrocytes.**
34. Toni, N. & Schinder, A.F. Maturation and Functional Integration of New Granule Cells into the Adult Hippocampus. *Cold Spring Harb Perspect Biol* **8**, a018903 (2015).
35. Pascual, O. et al. Astrocytic purinergic signaling coordinates synaptic networks. *Science* **310**, 113-6 (2005).
36. Slezak, M. et al. Relevance of exocytotic glutamate release from retinal glia. *Neuron* **74**, 504-16 (2012).
37. Suzuki, A. et al. Astrocyte-neuron lactate transport is required for long-term memory formation. *Cell* **144**, 810-23 (2011).
38. Pellerin, L. & Magistretti, P.J. Glutamate uptake into astrocytes stimulates aerobic glycolysis: a mechanism coupling neuronal activity to glucose utilization. *Proc Natl Acad Sci U S A* **91**, 10625-9 (1994).
39. Steinman, M.Q., Gao, V. & Alberini, C.M. The Role of Lactate-Mediated Metabolic Coupling between Astrocytes and Neurons in Long-Term Memory Formation. *Front Integr Neurosci* **10**, 10 (2016).
40. Clasadonte, J., Scemes, E., Wang, Z., Boison, D. & Haydon, P.G. Connexin 43-Mediated Astroglial Metabolic Networks Contribute to the Regulation of the Sleep-Wake Cycle. *Neuron* **95**, 1365-1380 e5 (2017).
41. Magistretti, P.J. & Allaman, I. Lactate in the brain: from metabolic end-product to signalling molecule. *Nat Rev Neurosci* **19**, 235-249 (2018).

42. Herkenham, M. et al. Cannabinoid receptor localization in brain. *Proc Natl Acad Sci U S A* **87**, 1932-6 (1990).
43. Araque, A., Castillo, P.E., Manzoni, O.J. & Tonini, R. Synaptic functions of endocannabinoid signaling in health and disease. *Neuropharmacology* **124**, 13-24 (2017).
44. Han, J. et al. Acute cannabinoids impair working memory through astroglial CB1 receptor modulation of hippocampal LTD. *Cell* **148**, 1039-50 (2012).  
**This important study demonstrates that hippocampal LTD occurring upon acute exposure to cannabinoids requires activation of type-1 cannabinoid receptors on astrocytes but not on neurons. This astrocyte-mediated signaling pathway appears to be responsible for the impairment of working memory by marijuana.**
45. Navarrete, M. & Araque, A. Endocannabinoids mediate neuron-astrocyte communication. *Neuron* **57**, 883-93 (2008).
46. Navarrete, M. & Araque, A. Endocannabinoids potentiate synaptic transmission through stimulation of astrocytes. *Neuron* **68**, 113-26 (2010).
47. Min, R. & Nevian, T. Astrocyte signaling controls spike timing-dependent depression at neocortical synapses. *Nat Neurosci* **15**, 746-53 (2012).
48. Robin, L.M. et al. Astroglial CB1 Receptors Determine Synaptic D-Serine Availability to Enable Recognition Memory. *Neuron* **98**, 935-944 e5 (2018).
49. Gomez-Gonzalo, M. et al. Endocannabinoids Induce Lateral Long-Term Potentiation of Transmitter Release by Stimulation of Gliotransmission. *Cereb Cortex* **25**, 3699-712 (2015).
50. Andrade-Talavera, Y., Duque-Feria, P., Paulsen, O. & Rodriguez-Moreno, A. Presynaptic Spike Timing-Dependent Long-Term Depression in the Mouse Hippocampus. *Cereb Cortex* **26**, 3637-3654 (2016).
51. Pankratov, Y. & Lalo, U. Role for astroglial alpha1-adrenoreceptors in gliotransmission and control of synaptic plasticity in the neocortex. *Front Cell Neurosci* **9**, 230 (2015).
52. Navarrete, M. et al. Astrocytes mediate in vivo cholinergic-induced synaptic plasticity. *PLoS Biol* **10**, e1001259 (2012).
53. Takata, N. et al. Astrocyte calcium signaling transforms cholinergic modulation to cortical plasticity in vivo. *J Neurosci* **31**, 18155-65 (2011).
54. Pabst, M. et al. Astrocyte Intermediaries of Septal Cholinergic Modulation in the Hippocampus. *Neuron* **90**, 853-65 (2016).
55. Araque, A., Martin, E.D., Perea, G., Arellano, J.I. & Buno, W. Synaptically released acetylcholine evokes Ca<sup>2+</sup> elevations in astrocytes in hippocampal slices. *J Neurosci* **22**, 2443-50 (2002).
56. Lewitus, G.M., Pribiag, H., Duseja, R., St-Hilaire, M. & Stellwagen, D. An adaptive role of TNFalpha in the regulation of striatal synapses. *J Neurosci* **34**, 6146-55 (2014).
57. Stellwagen, D. & Malenka, R.C. Synaptic scaling mediated by glial TNF-alpha. *Nature* **440**, 1054-9 (2006).
58. Santello, M. & Volterra, A. TNFalpha in synaptic function: switching gears. *Trends Neurosci* **35**, 638-47 (2012).
59. Yang, S., Zhang, L.S., Gibboni, R., Weiner, B. & Bao, S. Impaired development and competitive refinement of the cortical frequency map in tumor necrosis factor-alpha-deficient mice. *Cereb Cortex* **24**, 1956-65 (2014).
60. Jourdain, P. et al. Glutamate exocytosis from astrocytes controls synaptic strength. *Nat Neurosci* **10**, 331-9 (2007).
61. Santello, M., Bezzi, P. & Volterra, A. TNFalpha controls glutamatergic gliotransmission in the hippocampal dentate gyrus. *Neuron* **69**, 988-1001 (2011).
62. Habbas, S. et al. Neuroinflammatory TNFalpha Impairs Memory via Astrocyte Signaling. *Cell* **163**, 1730-41 (2015).  
**This study identifies a specific astrocytic mechanism linking inflammation to cognitive impairment. Local increase of TNFalpha in the hippocampal dentate gyrus activates astrocyte TNFR1, which in turn triggers persistent alterations of excitatory synapses. Such synaptic alterations are responsible for the memory deficits displayed by a mouse model of multiple sclerosis.**
63. Buzsaki, G. & Draguhn, A. Neuronal oscillations in cortical networks. *Science* **304**, 1926-9 (2004).

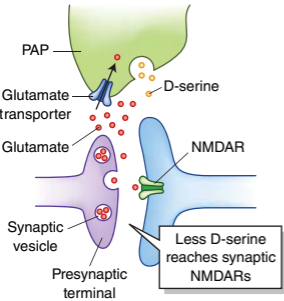
64. Paukert, M. et al. Norepinephrine controls astroglial responsiveness to local circuit activity. *Neuron* **82**, 1263-70 (2014).  
**This interesting study introduces the concept of “astrocytic priming”, an increase in astrocyte responsiveness to local network activity according to general behavioral state. In particular, startle behavior triggers simultaneous alpha-noradrenergic activation of astrocytes in multiple brain regions. As a result, astrocytes in visual cortex respond more to light stimulation.**
65. Perea, G. & Araque, A. Properties of synaptically evoked astrocyte calcium signal reveal synaptic information processing by astrocytes. *J Neurosci* **25**, 2192-203 (2005).
66. Marshall, L., Helgadottir, H., Mollle, M. & Born, J. Boosting slow oscillations during sleep potentiates memory. *Nature* **444**, 610-3 (2006).
67. Poskanzer, K.E. & Yuste, R. Astrocytic regulation of cortical UP states. *Proc Natl Acad Sci U S A* **108**, 18453-8 (2011).
68. Fellin, T. et al. Endogenous nonneuronal modulators of synaptic transmission control cortical slow oscillations in vivo. *Proc Natl Acad Sci U S A* **106**, 15037-42 (2009).
69. Poskanzer, K.E. & Yuste, R. Astrocytes regulate cortical state switching in vivo. *Proc Natl Acad Sci U S A* **113**, E2675-84 (2016).  
**In this seminal study, the authors demonstrate that astrocytic calcium transients promote the switch of the somatosensory cortical circuit to a low-frequency state, a neocortical rhythm important for sleep and memory. Non-invasive activation of astrocytes produces transient increases in extracellular glutamate, which would mediate the cortical state switch.**
70. Tan, Z. et al. Glia-derived ATP inversely regulates excitability of pyramidal and CCK-positive neurons. *Nat Commun* **8**, 13772 (2017).
71. Lee, H.S. et al. Astrocytes contribute to gamma oscillations and recognition memory. *Proc Natl Acad Sci U S A* **111**, E3343-52 (2014).  
**In this study, the authors specifically induced tetanus toxin expression in astrocytes and found evidence of a reduction in cortical gamma oscillations, which was accompanied by impaired behavioral performance in the novel object recognition test.**
72. Perea, G. et al. Activity-dependent switch of GABAergic inhibition into glutamatergic excitation in astrocyte-neuron networks. *Elife* **5** (2016).
73. Fellin, T. et al. Neuronal synchrony mediated by astrocytic glutamate through activation of extrasynaptic NMDA receptors. *Neuron* **43**, 729-43 (2004).
74. Sasaki, T., Matsuki, N. & Ikegaya, Y. Action-potential modulation during axonal conduction. *Science* **331**, 599-601 (2011).
75. Ashhad, S. & Narayanan, R. Active dendrites regulate the impact of gliotransmission on rat hippocampal pyramidal neurons. *Proc Natl Acad Sci U S A* **113**, E3280-9 (2016).
76. Bittner, K.C. et al. Conjunctive input processing drives feature selectivity in hippocampal CA1 neurons. *Nat Neurosci* **18**, 1133-42 (2015).
77. Di Castro, M.A. et al. Local Ca<sup>2+</sup> detection and modulation of synaptic release by astrocytes. *Nat Neurosci* **14**, 1276-84 (2011).
78. Perea, G. & Araque, A. Astrocytes potentiate transmitter release at single hippocampal synapses. *Science* **317**, 1083-6 (2007).
79. Chever, O., Dossi, E., Pannasch, U., Derangeon, M. & Rouach, N. Astroglial networks promote neuronal coordination. *Sci Signal* **9**, ra6 (2016).
80. Martin-Fernandez, M. et al. Synapse-specific astrocyte gating of amygdala-related behavior. *Nat Neurosci* **20**, 1540-1548 (2017).
81. Newman, L.A., Korol, D.L. & Gold, P.E. Lactate produced by glycogenolysis in astrocytes regulates memory processing. *PLoS One* **6**, e28427 (2011).
82. Jensen, C.J. et al. Astrocytic beta2 Adrenergic Receptor Gene Deletion Affects Memory in Aged Mice. *PLoS One* **11**, e0164721 (2016).
83. Gao, V. et al. Astrocytic beta2-adrenergic receptors mediate hippocampal long-term memory consolidation. *Proc Natl Acad Sci U S A* **113**, 8526-31 (2016).  
**This study reports that noradrenaline signaling via  $\beta$ -receptors, which promotes memory consolidation, occurs in astrocytes and requires release of lactate from these cells. Lactate in turn supports the neuronal molecular changes essential for long-term memory formation.**

84. Dong, J.H. et al. Adaptive Activation of a Stress Response Pathway Improves Learning and Memory Through Gs and beta-Arrestin-1-Regulated Lactate Metabolism. *Biol Psychiatry* **81**, 654-670 (2017).
85. Abel, T., Havekes, R., Saletin, J.M. & Walker, M.P. Sleep, plasticity and memory from molecules to whole-brain networks. *Curr Biol* **23**, R774-88 (2013).
86. Genzel, L., Kroes, M.C., Dresler, M. & Battaglia, F.P. Light sleep versus slow wave sleep in memory consolidation: a question of global versus local processes? *Trends Neurosci* **37**, 10-9 (2014).
87. Norimoto, H. et al. Hippocampal ripples down-regulate synapses. *Science* **359**, 1524-1527 (2018).
88. Basheer, R., Strecker, R.E., Thakkar, M.M. & McCarley, R.W. Adenosine and sleep-wake regulation. *Prog Neurobiol* **73**, 379-96 (2004).
89. Lalo, U. et al. Exocytosis of ATP from astrocytes modulates phasic and tonic inhibition in the neocortex. *PLoS Biol* **12**, e1001747 (2014).
90. Schmitt, L.I., Sims, R.E., Dale, N. & Haydon, P.G. Wakefulness affects synaptic and network activity by increasing extracellular astrocyte-derived adenosine. *J Neurosci* **32**, 4417-25 (2012).
91. Florian, C., Vecsey, C.G., Halassa, M.M., Haydon, P.G. & Abel, T. Astrocyte-derived adenosine and A1 receptor activity contribute to sleep loss-induced deficits in hippocampal synaptic plasticity and memory in mice. *J Neurosci* **31**, 6956-62 (2011).
92. Halassa, M.M. et al. Astrocytic modulation of sleep homeostasis and cognitive consequences of sleep loss. *Neuron* **61**, 213-9 (2009).
- By using the so-called dnSNARE mice (see Box1 for discussion) this study proposes for the first time a key role for adenosine of astrocytic origin in mediating the negative cognitive consequences of sleep deprivation.**
93. Hamby, M.E. et al. Inflammatory mediators alter the astrocyte transcriptome and calcium signaling elicited by multiple G-protein-coupled receptors. *J Neurosci* **32**, 14489-510 (2012).
94. Teaktong, T. et al. Alzheimer's disease is associated with a selective increase in alpha7 nicotinic acetylcholine receptor immunoreactivity in astrocytes. *Glia* **41**, 207-11 (2003).
95. Pirttimaki, T.M. et al. alpha7 Nicotinic receptor-mediated astrocytic gliotransmitter release: Abeta effects in a preclinical Alzheimer's mouse model. *PLoS One* **8**, e81828 (2013).
96. Talantova, M. et al. Abeta induces astrocytic glutamate release, extrasynaptic NMDA receptor activation, and synaptic loss. *Proc Natl Acad Sci U S A* **110**, E2518-27 (2013).
97. Lim, D. et al. Amyloid beta deregulates astroglial mGluR5-mediated calcium signaling via calcineurin and Nf-kB. *Glia* **61**, 1134-45 (2013).
98. Delekate, A. et al. Metabotropic P2Y1 receptor signalling mediates astrocytic hyperactivity in vivo in an Alzheimer's disease mouse model. *Nat Commun* **5**, 5422 (2014).
99. Orr, A.G. et al. Astrocytic adenosine receptor A2A and Gs-coupled signaling regulate memory. *Nat Neurosci* **18**, 423-34 (2015).
- By using cell-specific mouse genetics, this study reveals the regulatory role of astrocyte adenosine A2A receptor and its downstream Gs-mediated signaling on long-term memory formation. Prominent up-regulation of the system in Alzheimer's disease patients and mouse models would contribute to memory loss.**
100. Hardt, O., Nader, K. & Nadel, L. Decay happens: the role of active forgetting in memory. *Trends Cogn Sci* **17**, 111-20 (2013).
101. Orr, A.G. et al. Istradefylline reduces memory deficits in aging mice with amyloid pathology. *Neurobiol Dis* **110**, 29-36 (2018).
102. Matos, M. et al. Deletion of adenosine A2A receptors from astrocytes disrupts glutamate homeostasis leading to psychomotor and cognitive impairment: relevance to schizophrenia. *Biol Psychiatry* **78**, 763-74 (2015).
103. Mitew, S., Kirkcaldie, M.T., Dickson, T.C. & Vickers, J.C. Altered synapses and gliotransmission in Alzheimer's disease and AD model mice. *Neurobiol Aging* **34**, 2341-51 (2013).
104. Wu, Z., Guo, Z., Gearing, M. & Chen, G. Tonic inhibition in dentate gyrus impairs long-term potentiation and memory in an Alzheimer's disease model. *Nat Commun* **5**, 4159 (2014).
105. Jo, S. et al. GABA from reactive astrocytes impairs memory in mouse models of Alzheimer's disease. *Nat Med* **20**, 886-96 (2014).
106. Busche, M.A. & Konnerth, A. Impairments of neural circuit function in Alzheimer's disease. *Philos Trans R Soc Lond B Biol Sci* **371** (2016).

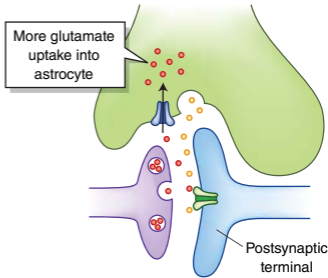
107. Palop, J.J. & Mucke, L. Amyloid-beta-induced neuronal dysfunction in Alzheimer's disease: from synapses toward neural networks. *Nat Neurosci* **13**, 812-8 (2010).
108. Li, S. et al. Soluble oligomers of amyloid Beta protein facilitate hippocampal long-term depression by disrupting neuronal glutamate uptake. *Neuron* **62**, 788-801 (2009).
109. Fogel, H. et al. APP homodimers transduce an amyloid-beta-mediated increase in release probability at excitatory synapses. *Cell Rep* **7**, 1560-1576 (2014).
110. Verret, L. et al. Inhibitory interneuron deficit links altered network activity and cognitive dysfunction in Alzheimer model. *Cell* **149**, 708-21 (2012).
111. Kuchibhotla, K.V., Lattarulo, C.R., Hyman, B.T. & Bacskaï, B.J. Synchronous hyperactivity and intercellular calcium waves in astrocytes in Alzheimer mice. *Science* **323**, 1211-5 (2009).  
**By measuring Ca<sup>2+</sup> dynamics in astrocytes in vivo in a mouse model of Alzheimer's disease, this study was the first to identify a functional alteration (hyperactivity) of glial networks, in complement to the imbalances observed by others in neuronal networks.**
112. Gomez-Gonzalo, M. et al. Neuron-astrocyte signaling is preserved in the aging brain. *Glia* **65**, 569-580 (2017).
113. Abramov, A.Y., Canevari, L. & Duchen, M.R. Changes in intracellular calcium and glutathione in astrocytes as the primary mechanism of amyloid neurotoxicity. *J Neurosci* **23**, 5088-95 (2003).
114. Makitani, K., Nakagawa, S., Izumi, Y., Akaike, A. & Kume, T. Inhibitory effect of donepezil on bradykinin-induced increase in the intracellular calcium concentration in cultured cortical astrocytes. *J Pharmacol Sci* **134**, 37-44 (2017).
115. Reichenbach, N. et al. P2Y1 receptor blockade normalizes network dysfunction and cognition in an Alzheimer's disease model. *J Exp Med* **215**, 1649-1663 (2018).
116. Fischer, R., Kontermann, R.E. & Maier, O. Targeting sTNF/TNFR1 Signaling as a New Therapeutic Strategy. *Antibodies* **4**, 48-70 (2015).
117. Cavanagh, C. et al. Inhibiting tumor necrosis factor-alpha before amyloidosis prevents synaptic deficits in an Alzheimer's disease model. *Neurobiol Aging* **47**, 41-49 (2016).
118. D'Ascenzo, M., Podda, M.V. & Grassi, C. The role of D-serine as co-agonist of NMDA receptors in the nucleus accumbens: relevance to cocaine addiction. *Front Synaptic Neurosci* **6**, 16 (2014).
119. Scofield, M.D. et al. Gq-DREADD Selectively Initiates Glial Glutamate Release and Inhibits Cue-induced Cocaine Seeking. *Biol Psychiatry* **78**, 441-51 (2015).
120. Curcio, L. et al. Reduced D-serine levels in the nucleus accumbens of cocaine-treated rats hinder the induction of NMDA receptor-dependent synaptic plasticity. *Brain* **136**, 1216-30 (2013).  
**In this study, the authors show that cocaine-treated rats present reduced D-serine levels in the nucleus accumbens. This reduction impairs long-term synaptic plasticity thereby favoring behavioral sensitization to cocaine.**
121. Liu, Z.Q. et al. D-Serine in the nucleus accumbens region modulates behavioral sensitization and extinction of conditioned place preference. *Pharmacol Biochem Behav* **143**, 44-56 (2016).
122. Hammond, S., Seymour, C.M., Burger, A. & Wagner, J.J. D-Serine facilitates the effectiveness of extinction to reduce drug-primed reinstatement of cocaine-induced conditioned place preference. *Neuropharmacology* **64**, 464-71 (2013).
123. Kelamangalath, L. & Wagner, J.J. D-serine treatment reduces cocaine-primed reinstatement in rats following extended access to cocaine self-administration. *Neuroscience* **169**, 1127-35 (2010).
124. Seif, T. et al. D-Serine and D-Cycloserine Reduce Compulsive Alcohol Intake in Rats. *Neuropsychopharmacology* **40**, 2357-67 (2015).
125. Wu, J., Zhao, R., Guo, L. & Zhen, X. Morphine-induced inhibition of Ca(2+) -dependent d-serine release from astrocytes suppresses excitability of GABAergic neurons in the nucleus accumbens. *Addict Biol* **22**, 1289-1303 (2017).
126. Boury-Jamot, B. et al. Disrupting astrocyte-neuron lactate transfer persistently reduces conditioned responses to cocaine. *Mol Psychiatry* **21**, 1070-6 (2016).
127. Zhang, Y. et al. Inhibition of Lactate Transport Erases Drug Memory and Prevents Drug Relapse. *Biol Psychiatry* **79**, 928-39 (2016).
128. Panatier, A. et al. Astrocytes are endogenous regulators of basal transmission at central synapses. *Cell* **146**, 785-98 (2011).

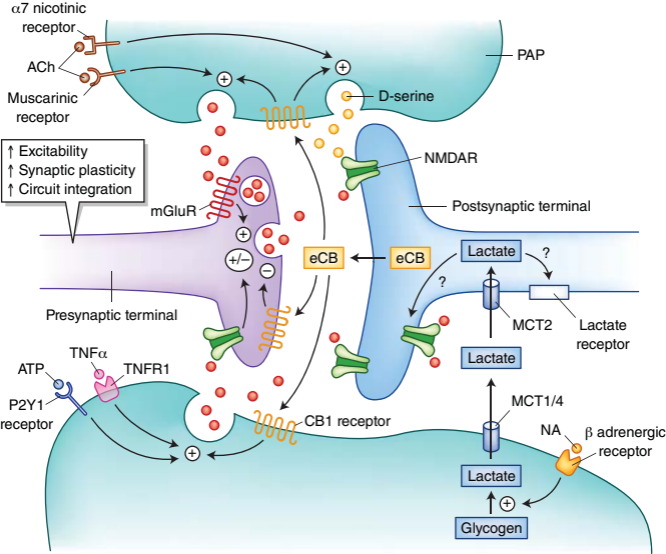
129. Halassa, M.M., Fellin, T., Takano, H., Dong, J.H. & Haydon, P.G. Synaptic islands defined by the territory of a single astrocyte. *J Neurosci* **27**, 6473-7 (2007).
130. Fields, R.D. et al. Glial biology in learning and cognition. *Neuroscientist* **20**, 426-31 (2014).
131. Porto-Pazos, A.B. et al. Artificial astrocytes improve neural network performance. *PLoS One* **6**, e19109 (2011).
132. Amiri, M., Hosseinmardi, N., Bahrami, F. & Janahmadi, M. Astrocyte- neuron interaction as a mechanism responsible for generation of neural synchrony: a study based on modeling and experiments. *J Comput Neurosci* **34**, 489-504 (2013).
133. Tewari, S. & Parpura, V. A possible role of astrocytes in contextual memory retrieval: An analysis obtained using a quantitative framework. *Front Comput Neurosci* **7**, 145 (2013).
134. Agulhon, C., Fiacco, T.A. & McCarthy, K.D. Hippocampal short- and long-term plasticity are not modulated by astrocyte Ca<sup>2+</sup> signaling. *Science* **327**, 1250-4 (2010).
135. Otte, D.M. et al. Effects of Chronic D-Serine Elevation on Animal Models of Depression and Anxiety-Related Behavior. *PLoS One* **8**, e67131 (2013).
136. Chen, N. et al. Nucleus basalis-enabled stimulus-specific plasticity in the visual cortex is mediated by astrocytes. *Proc Natl Acad Sci U S A* **109**, E2832-41 (2012).
137. Saab, A.S. et al. Bergmann glial AMPA receptors are required for fine motor coordination. *Science* **337**, 749-53 (2012).
138. Fiacco, T.A. et al. Selective stimulation of astrocyte calcium in situ does not affect neuronal excitatory synaptic activity. *Neuron* **54**, 611-26 (2007).
139. Fujita, T. et al. Neuronal transgene expression in dominant-negative SNARE mice. *J Neurosci* **34**, 16594-604 (2014).
140. Chai, H. et al. Neural Circuit-Specialized Astrocytes: Transcriptomic, Proteomic, Morphological, and Functional Evidence. *Neuron* **95**, 531-549 e9 (2017).
141. Sharma, K. et al. Cell type- and brain region-resolved mouse brain proteome. *Nat Neurosci* **18**, 1819-31 (2015).
142. Jahn, H.M., Scheller, A. & Kirchhoff, F. Genetic control of astrocyte function in neural circuits. *Front Cell Neurosci* **9**, 310 (2015).
143. Hirrlinger, P.G., Scheller, A., Braun, C., Hirrlinger, J. & Kirchhoff, F. Temporal control of gene recombination in astrocytes by transgenic expression of the tamoxifen-inducible DNA recombinase variant CreERT2. *Glia* **54**, 11-20 (2006).
144. Srinivasan, R. et al. New Transgenic Mouse Lines for Selectively Targeting Astrocytes and Studying Calcium Signals in Astrocyte Processes In Situ and In Vivo. *Neuron* **92**, 1181-1195 (2016).
145. Winchenbach, J. et al. Inducible targeting of CNS astrocytes in Aldh111-CreERT2 BAC transgenic mice. *F1000Res* **5**, 2934 (2016).
146. Metzger, D., Clifford, J., Chiba, H. & Chambon, P. Conditional site-specific recombination in mammalian cells using a ligand-dependent chimeric Cre recombinase. *Proc Natl Acad Sci U S A* **92**, 6991-5 (1995).
147. Sauer, B. & Henderson, N. Site-specific DNA recombination in mammalian cells by the Cre recombinase of bacteriophage P1. *Proc Natl Acad Sci U S A* **85**, 5166-70 (1988).
148. Gossen, M. & Bujard, H. Tight control of gene expression in mammalian cells by tetracycline-responsive promoters. *Proc Natl Acad Sci U S A* **89**, 5547-51 (1992).
149. Gebara, E. et al. Heterogeneity of Radial Glia-Like Cells in the Adult Hippocampus. *Stem Cells* **34**, 997-1010 (2016).
150. Mori, T. et al. Inducible gene deletion in astroglia and radial glia--a valuable tool for functional and lineage analysis. *Glia* **54**, 21-34 (2006).

## Limited coverage

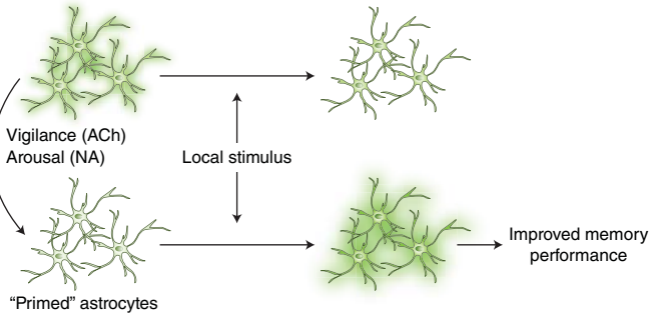


## Extensive coverage

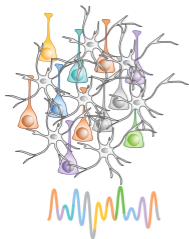






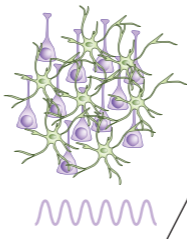
**a****b**

No astrocyte activation



Desynchronized network state

Astrocyte activation



Synchronized network state

Slow-wave oscillation

Memory consolidation

Gamma oscillation

Recognition memory

