

Noncommunicable Diseases

A Compendium

**Supplement 1: Mortality trends and
population attributable fractions**



Edited by **Nick Banatvala** and **Pascal Bovet**

This Supplement provides a set of graphical images that describe trends in crude and age-adjusted NCD mortality as well as estimates of the total mortality that are attributable to increased levels of risk factors in the population. These figures have been produced to complement many of the tables that refer to NCD mortality in the compendium. Data on communicable diseases are included for comparative purposes.

Estimates are shown according to World Bank country income categories (high, upper-middle, lower-middle and low) in 1990 and 2019 and were generated using the Institute for Health Metrics and Evaluation’s Global Disease Burden (IHME-GBD) Compare tool (<https://vizhub.healthdata.org/gbd-compare/>) between 14-16 May 2022. All figures displayed in the supplement are screenshots generated by the online IHME-GBD Compare tool.

For 2019, IHME-GBD identified 289 causes of death (and 369 diseases and injuries) and 87 modifiable risk factors in a hierarchy of 5 levels, from 0 (the broadest) to 4 (the most granular). For example: for causes of death, level 0 corresponds to all causes; NCDs are a level 1 cause; cardiovascular diseases are a level 2 cause; stroke is a level 3 cause, and ischaemic stroke is a level 4 cause. For risk factors, level 0 is the aggregate of all environmental/occupational, behavioural and metabolic risks; behavioural risks are for example a level 1 risk, with dietary risks a level 2 risk, diet high in sodium a level 3 risk. While there are no level 4 risks for diet, level 4 risks exist for other risk factors.

Chapter 1 of the compendium (Global burden of NCDs) provides further information on IHME-GBD and the reasons that these data are being used in the compendium.

Table of contents

| | |
|--|----|
| 1. Global disease burden | 2 |
| Figure 1.1 Mortality by country income category in 2019 (cause of death: level 2)..... | 3 |
| Figure 1.2 Mortality by country income category in 2019 (cause of death: level 3)..... | 4 |
| 2. Trends over time of NCDs mortality by country income category | 5 |
| Figure 2.1 All main noncommunicable diseases..... | 5 |
| Figure 2.2 Communicable diseases (displayed for comparative purpose)..... | 5 |
| Figure 2.3 Cardiovascular disease..... | 5 |
| Figure 2.4 Ischaemic heart disease..... | 6 |
| Figure 2.5 Stroke..... | 6 |
| Figure 2.6 All cancers..... | 6 |
| Figure 2.7 Colorectal cancer..... | 7 |
| Figure 2.8 Breast cancer (among females)..... | 7 |
| Figure 2.9 Prostate cancer (among males)..... | 7 |
| Figure 2.10 Cervical cancer (among females)..... | 8 |
| Figure 2.11 Chronic respiratory diseases..... | 8 |
| Figure 2.12 Diabetes (as a direct cause of death)..... | 8 |
| 3. Trends over time of total mortality attributable to risk factors | 9 |
| 3.1 Behavioural risks..... | 9 |
| Figure 3.1.1 Tobacco use..... | 9 |
| Figure 3.1.2 Dietary risk..... | 9 |
| Figure 3.1.3 Diet high in sodium..... | 9 |
| Figure 3.1.4 Diet high in sugar-sweetened beverages..... | 10 |
| Figure 3.1.5 Diet high in trans fatty acids..... | 10 |
| Figure 3.1.6 Alcohol use..... | 10 |
| Figure 3.1.7 Low physical activity..... | 11 |
| 3.2 Metabolic risks..... | 11 |
| Figure 3.2.1 High systolic blood pressure..... | 11 |
| Figure 3.2.2 High body mass index..... | 11 |
| Figure 3.2.3 High blood glucose (as a risk factor)..... | 12 |
| Figure 3.2.4 High LDL-cholesterol..... | 12 |
| 3.3 Environmental risks..... | 13 |
| Figure 3.3.1 Particulate matter pollution..... | 13 |
| Figure 3.3.2 Ambient particulate matter pollution..... | 13 |
| Figure 3.3.3 Household air pollution from solid fuels..... | 13 |

| | |
|--|----|
| 4. Deaths attributable to risk factors in the population in 2019 | 14 |
| Figure 4.1 Deaths attributable to risk factors (level 2) worldwide | 14 |
| Figure 4.2 Deaths attributable to risk factors (level 2) by World Bank country income category | 14 |
| Figure 4.3 Deaths attributable to risk factors (level 3) worldwide | 15 |
| Figure 4.4 Proportion of deaths attributable to risk factors (level 3) by World Bank country income category..... | 15 |
| 5. Ranking of broad-cause mortality in 1990 and 2019 | 16 |
| Figure 5.1 Ranking of broad-cause mortality (level 2) in 1990 and 2019 worldwide | 16 |
| Figure 5.2 Ranking of broad-cause mortality (level 2) in 1990 and 2019 by World Bank country income category | 16 |
| Figure 5.3 Ranking of broad-cause mortality (level 3) in 1990 and 2019 worldwide | 17 |
| Figure 5.4 Ranking of broad-cause mortality (level 3) in 1990 and 2019 by World Bank country income category | 17 |
| 6. Age-standardized mortality by World Bank country income category | 18 |
| Figure 6.1 Age-standardized mortality rates (including NCDs) by World Bank country income category in 2019..... | 18 |
| 7. Mortality by cause and age in 1990 and 2019 | 19 |
| Figure 7.1 Deaths by cause and age in 1990 and 2019 worldwide | 19 |
| Figure 7.2 Deaths by cause and age by World Bank country income category (2019)..... | 19 |

Disclaimer: The editors alone are responsible for the content in this supplement and they do not necessarily represent the views, decisions or policies of the institutions or governing bodies with which they are affiliated.

1. Global disease burden

Figure 1.1 Mortality by country income category in 2019 (cause of death: level 2)

Top left: high income; top right: upper middle income; bottom left: lower middle income; bottom right: low income.

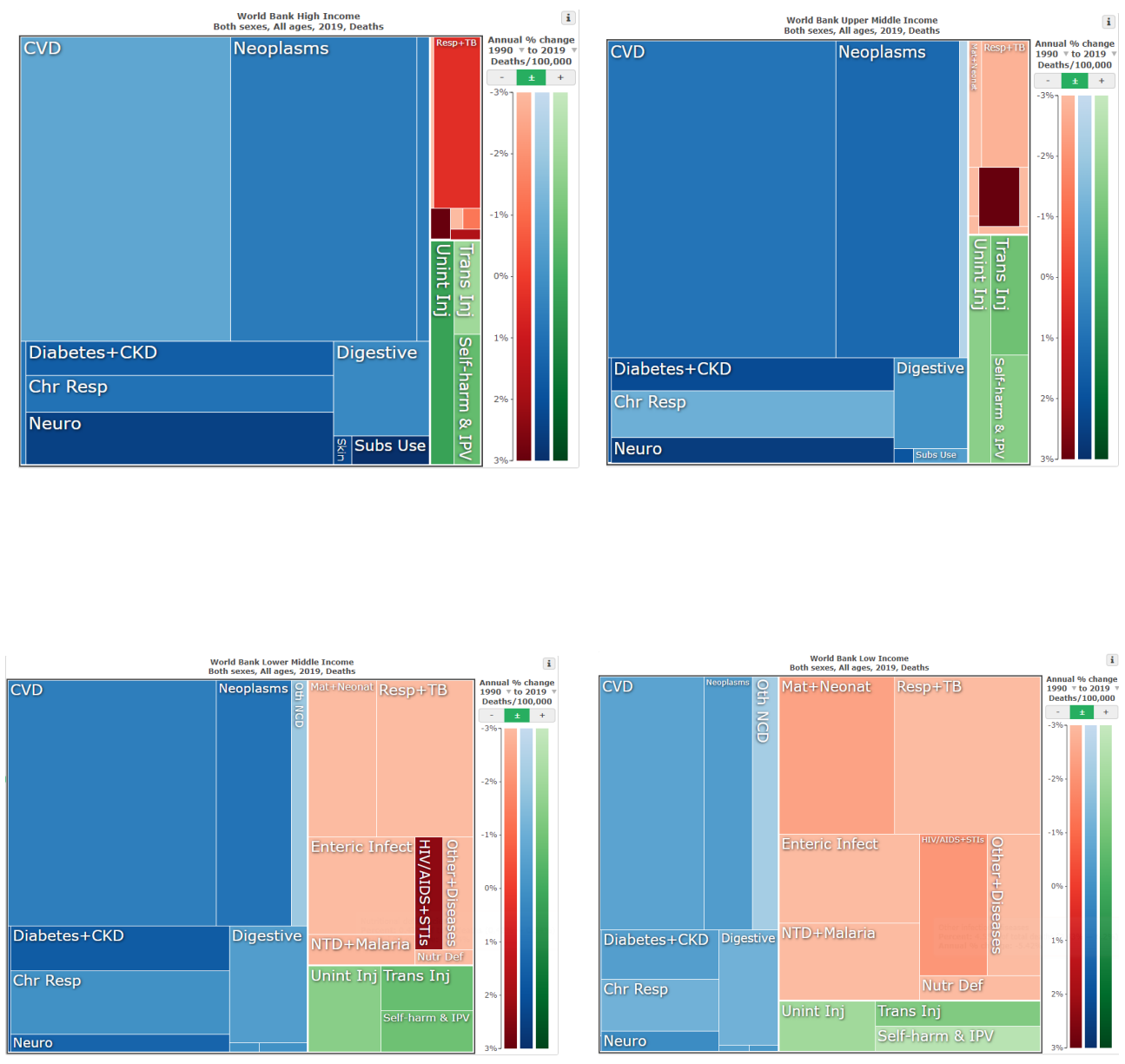
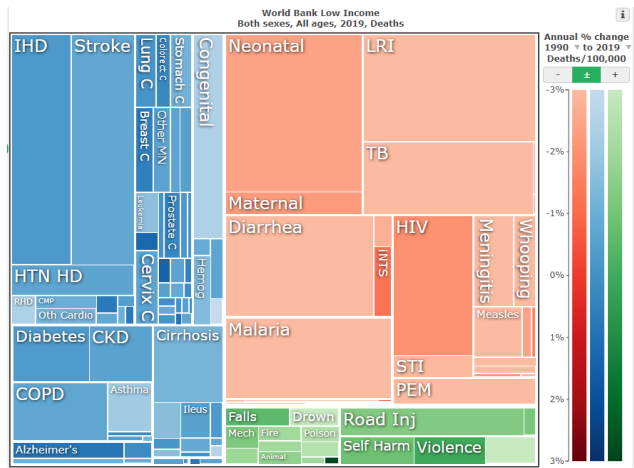
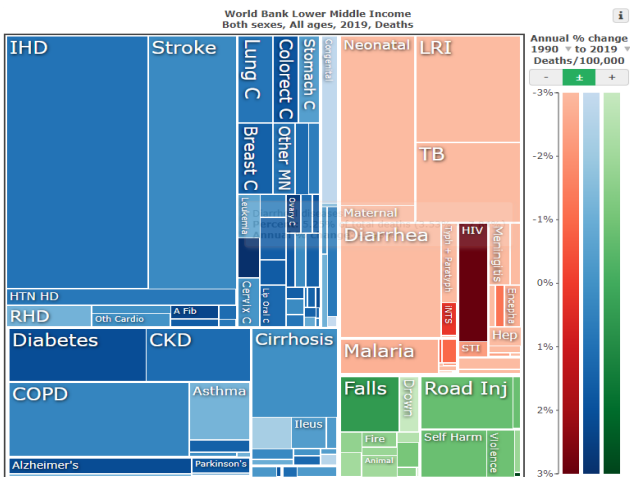
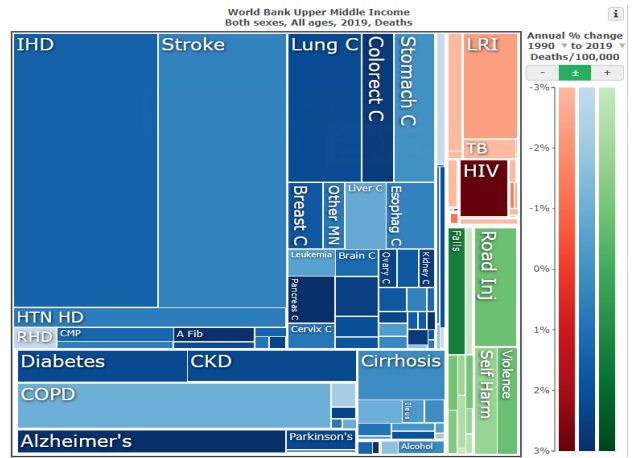
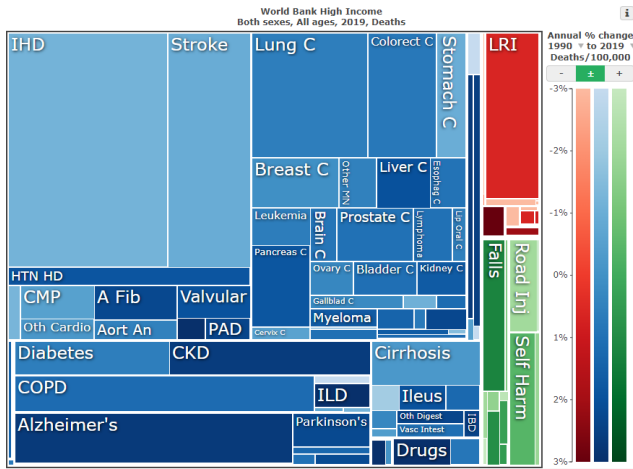


Figure 1.2 Mortality by country income category in 2019 (cause of death: level 3)

Top left: high income; top right: upper middle income; bottom left: lower middle income; bottom right: low income



2. Trends over time of NCDs mortality by country income category

Figure 2.1 All main noncommunicable diseases

By World Bank country income category; left: % of all deaths, right: age-standardized rates

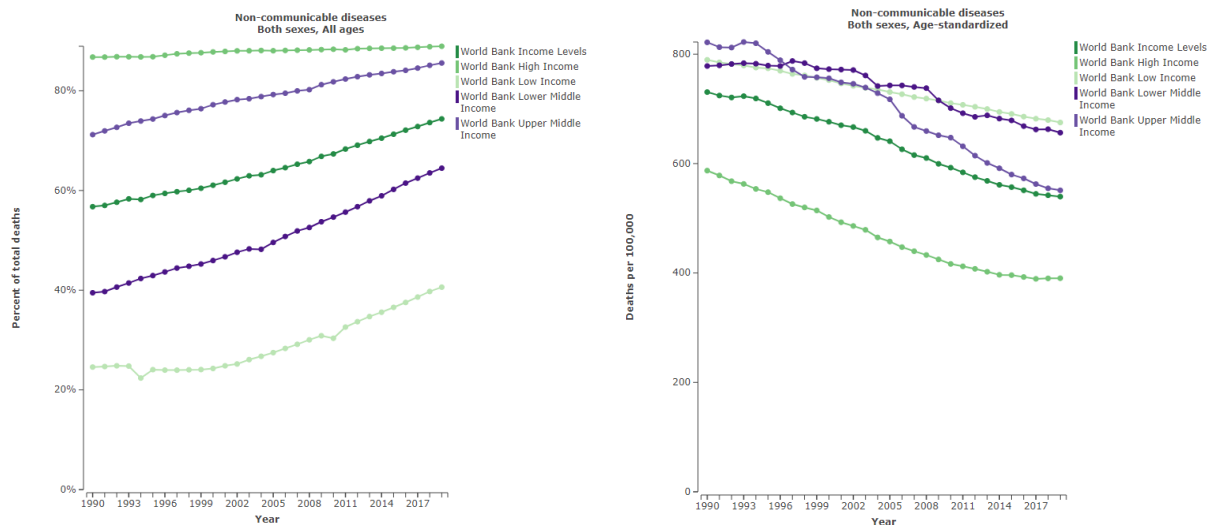


Figure 2.2 Communicable diseases (displayed for comparative purpose)

By World Bank country income category; left: % of all deaths, right: age-standardized rates

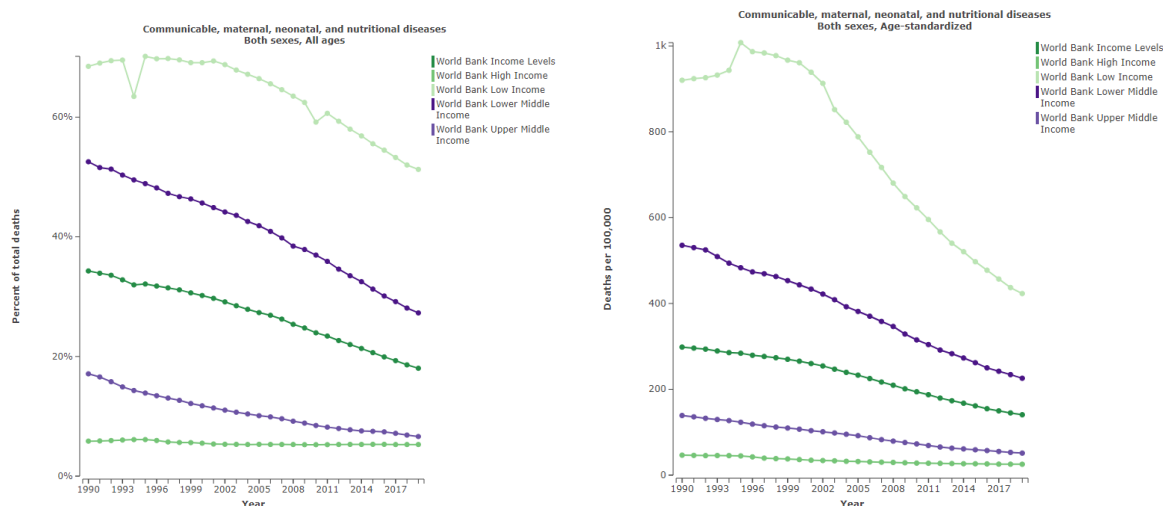


Figure 2.3 Cardiovascular disease

By World Bank country income category; percent of all deaths (left panel); age-standardized rates (right panel)

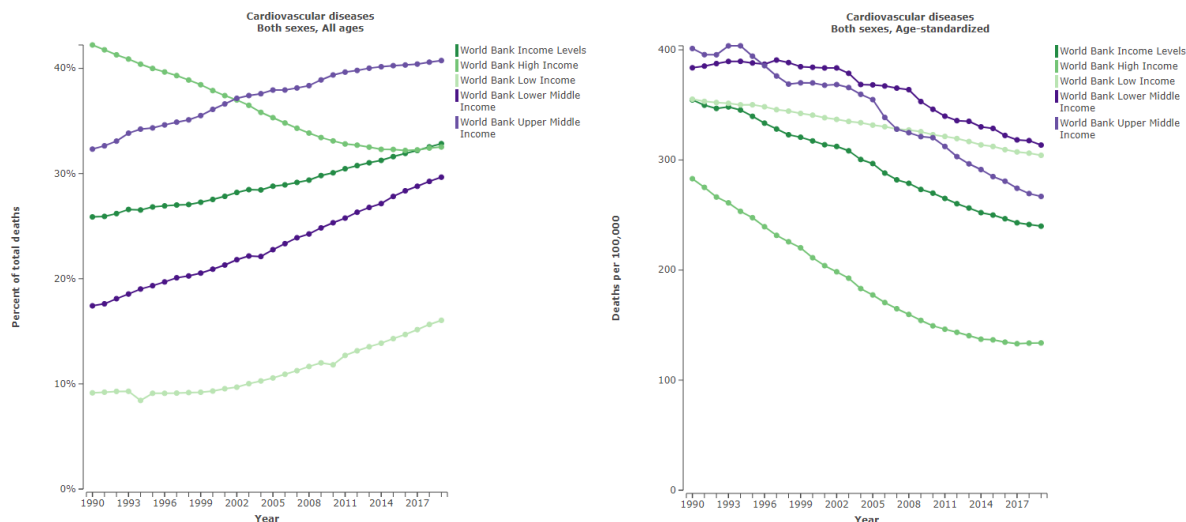


Figure 2.4 Ischaemic heart disease

By World Bank country income category; percent of all deaths (left panel); age-standardized rates (right panel)

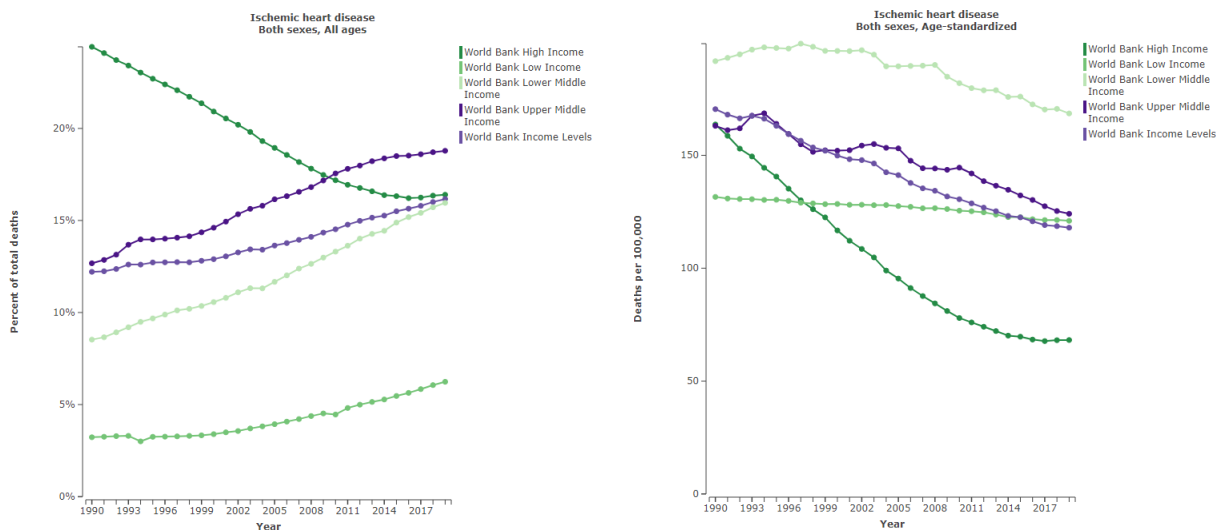


Figure 2.5 Stroke

By World Bank country income category; percent of all deaths (left panel); age-standardized rates (right panel)

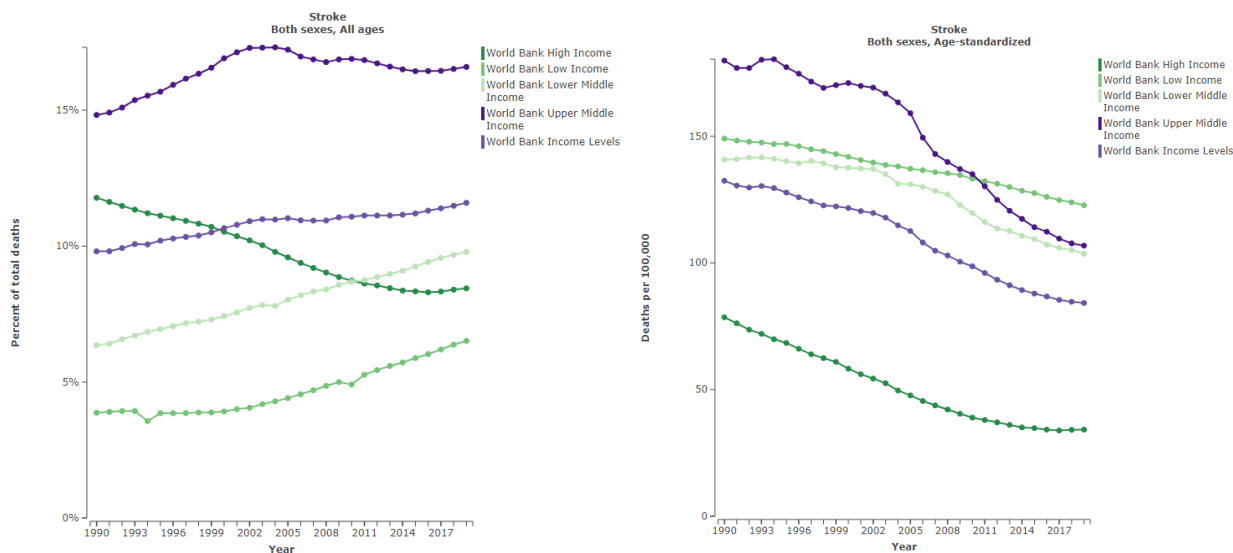


Figure 2.6 All cancers

By World Bank country income category; percent of all deaths (left panel); age-standardized rates (right panel)

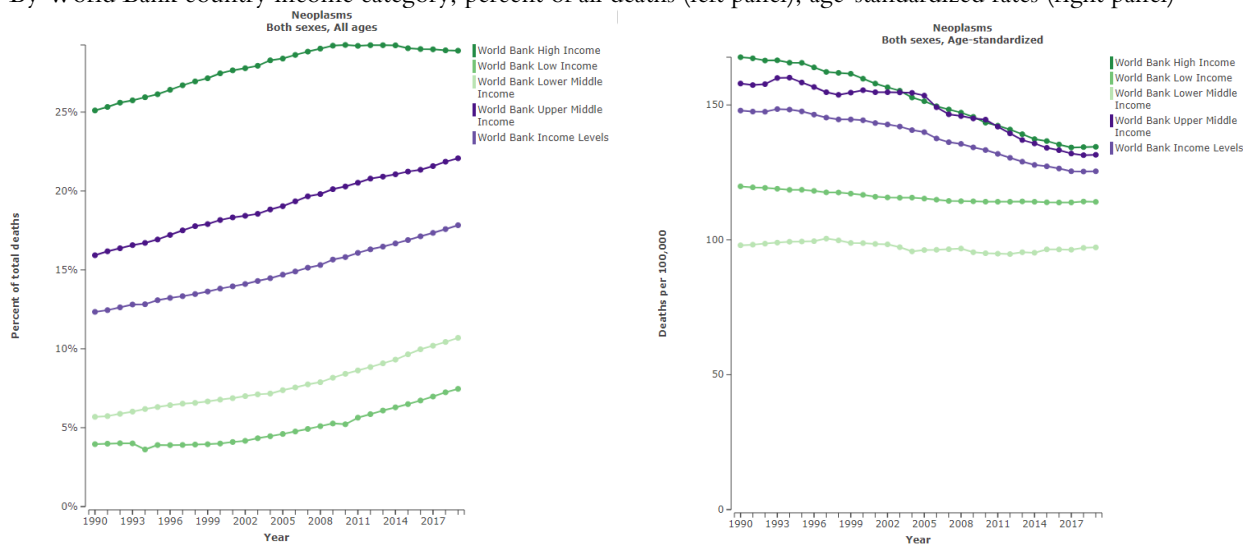


Figure 2.7 Colorectal cancer

By World Bank country income category; percent of all deaths (left panel); age-standardized rates (right panel)

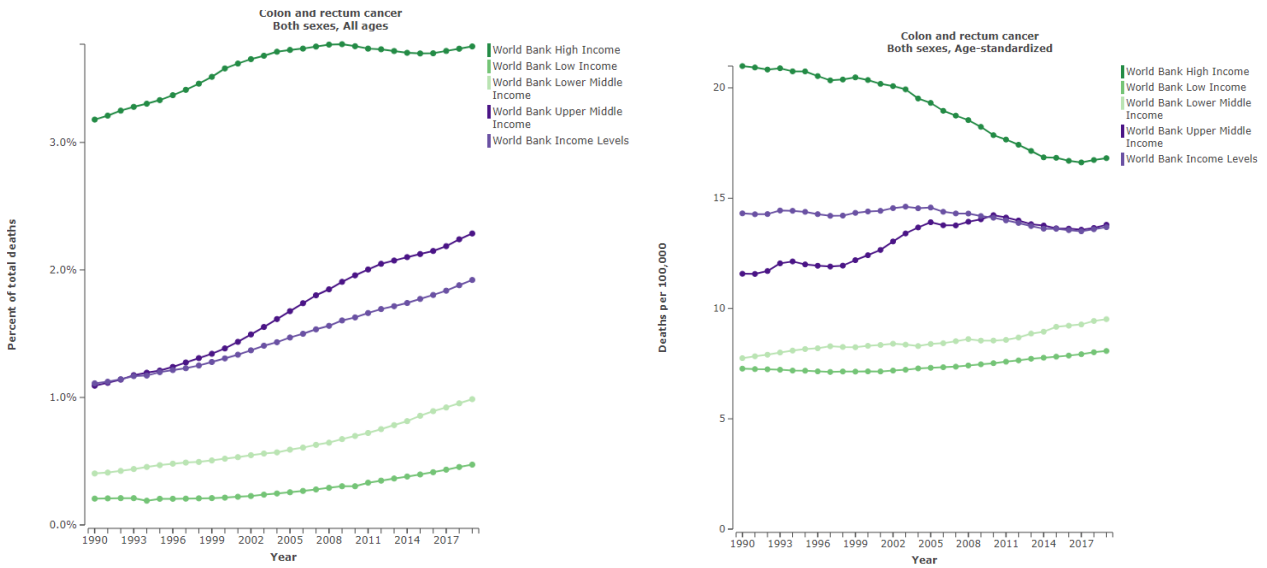


Figure 2.8 Breast cancer (among females)

By World Bank country income category; percent of all deaths (left panel); age-standardized rates (right panel)

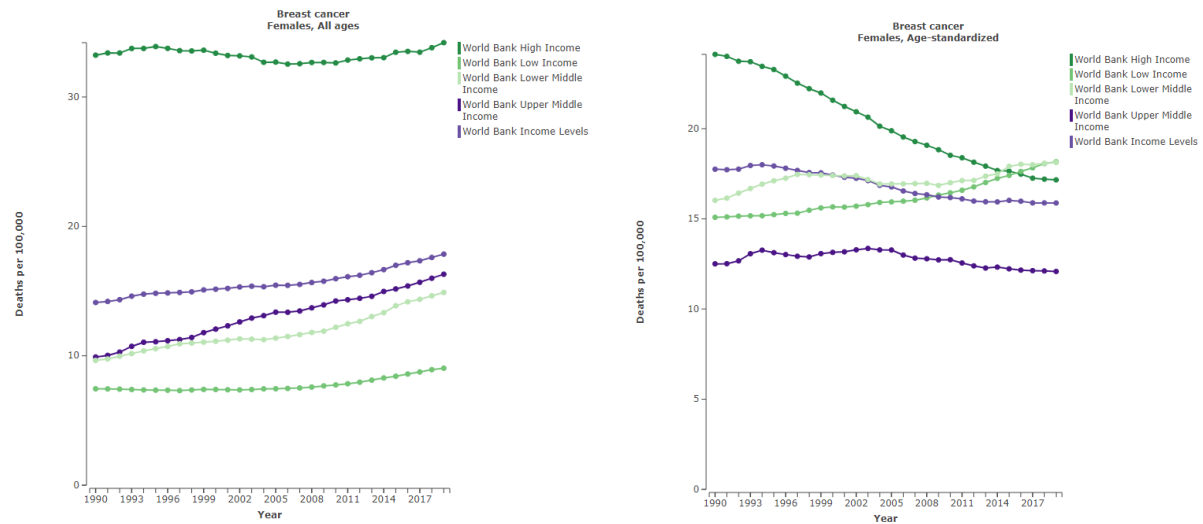


Figure 2.9 Prostate cancer (among males)

By World Bank country income category; percent of all deaths (left panel); age-standardized rates (right panel)

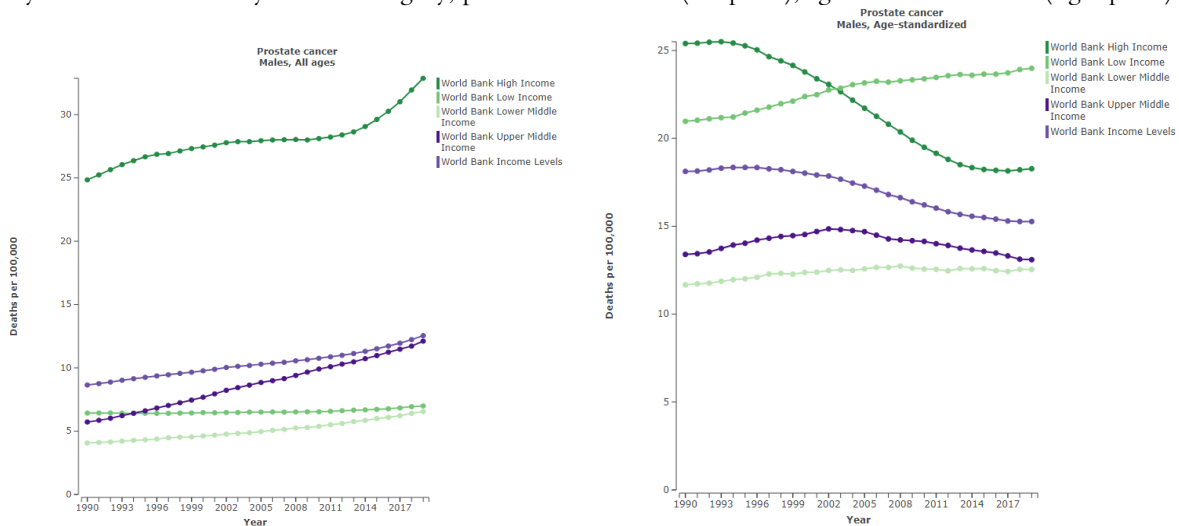


Figure 2.10 Cervical cancer (among females)

By World Bank country income category; percent of all deaths (left panel); age-standardized rates (right panel)

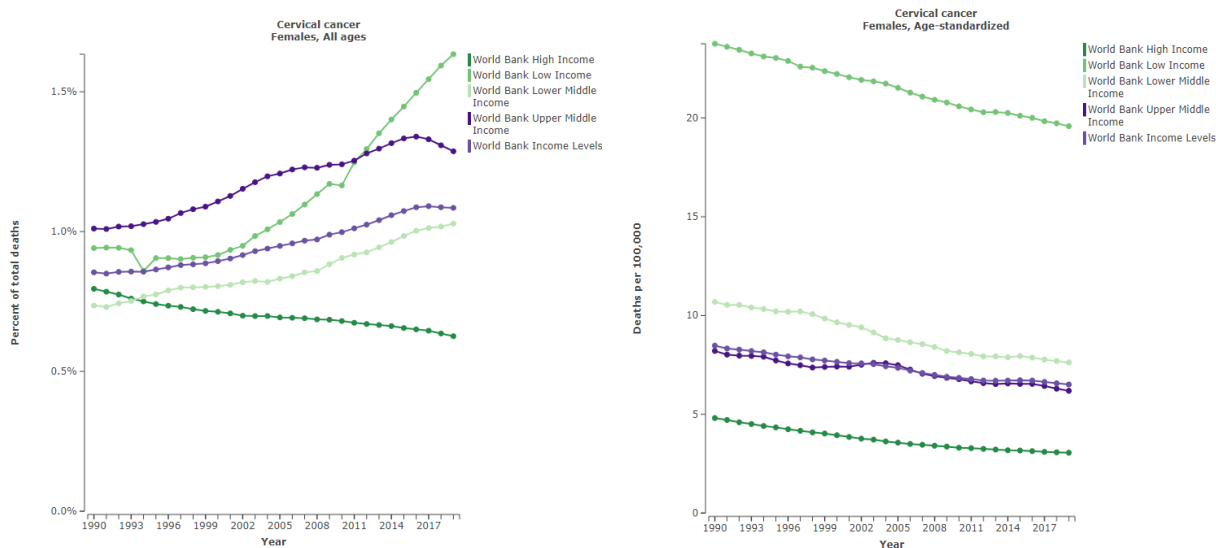


Figure 2.11 Chronic respiratory diseases

By World Bank country income category; percent of all deaths (left panel); age-standardized rates (right panel)

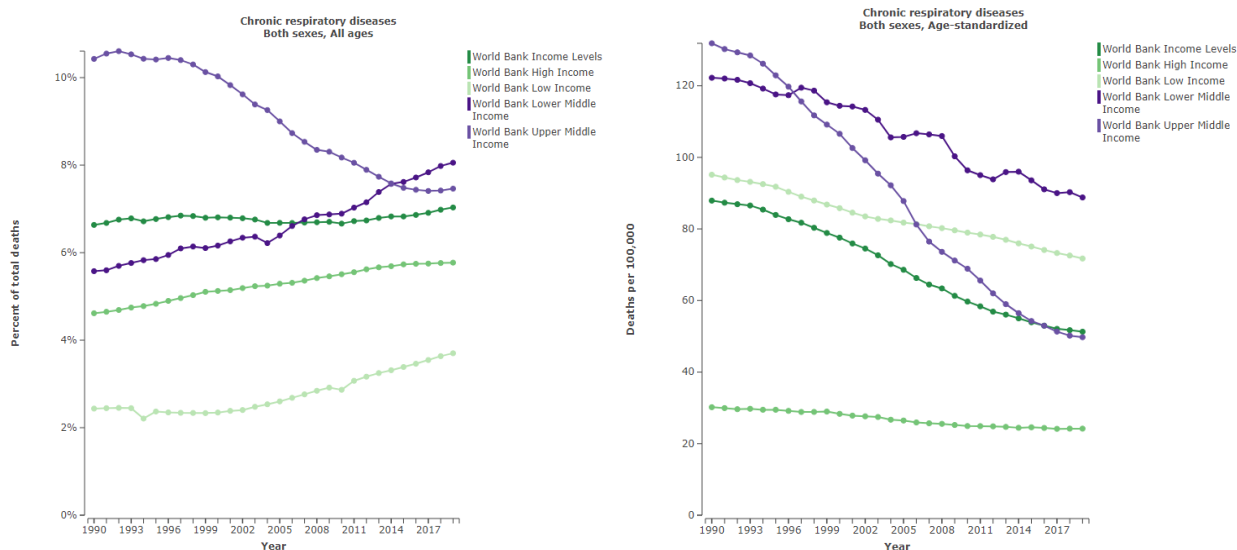
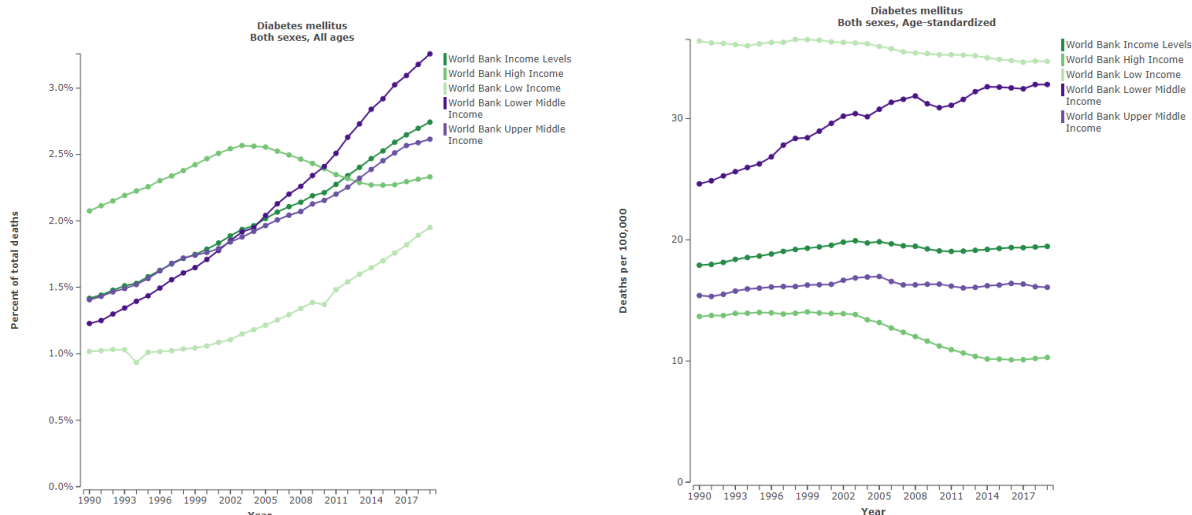


Figure 2.12 Diabetes (as a direct cause of death)

By World Bank country income category; percent of all deaths (left panel); age-standardized rates (right panel)



3. Trends over time of total mortality attributable to risk factors

3.1 Behavioural risks

Figure 3.1.1 Tobacco use

By World Bank country income category; percent of all deaths (left panel); age-standardized rates (right panel)

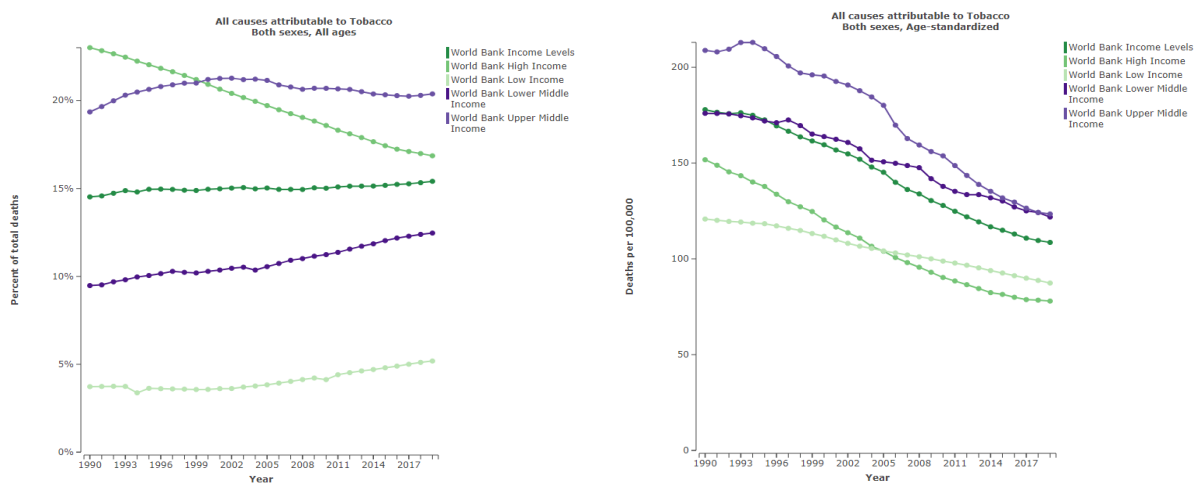


Figure 3.1.2 Dietary risk

By World Bank country income category; percent of all deaths (left panel); age-standardized rates (right panel)

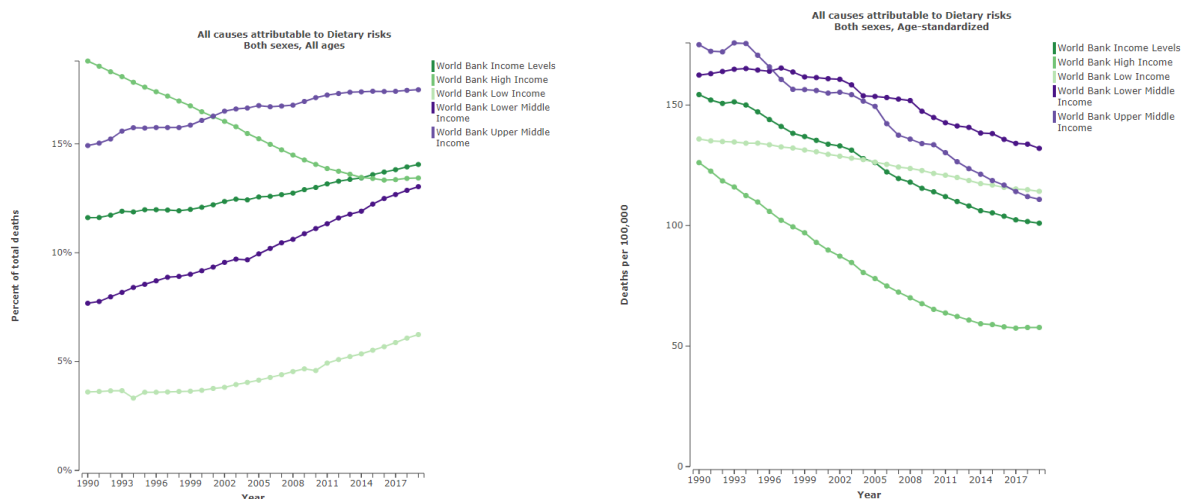


Figure 3.1.3 Diet high in sodium

By World Bank country income category; percent of all deaths (left panel); age-standardized rates (right panel)

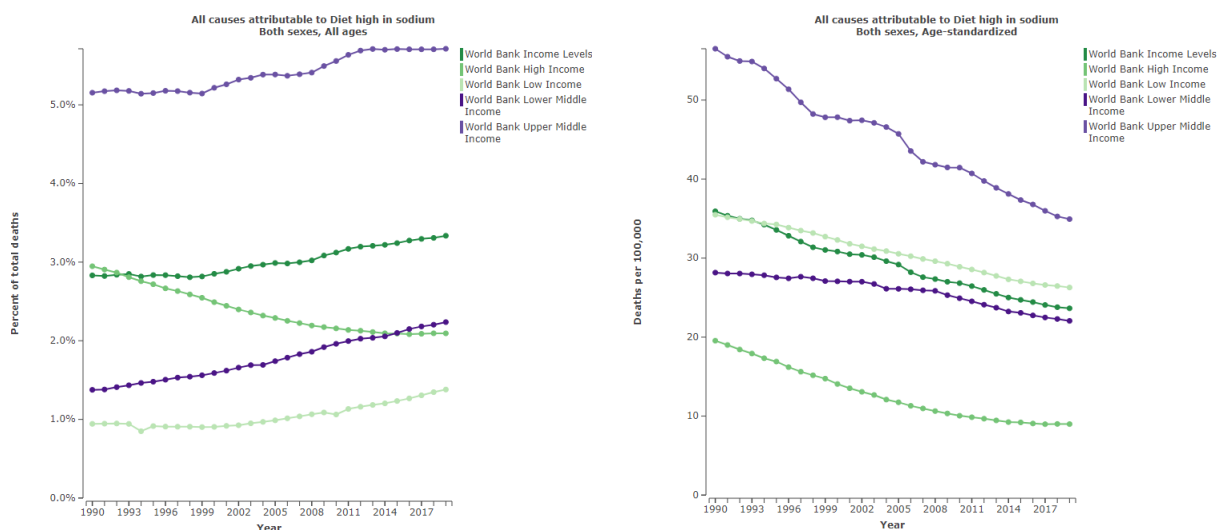


Figure 3.1.4 Diet high in sugar-sweetened beverages

By World Bank country income category; percent of all deaths (left panel); age-standardized rates (right panel)

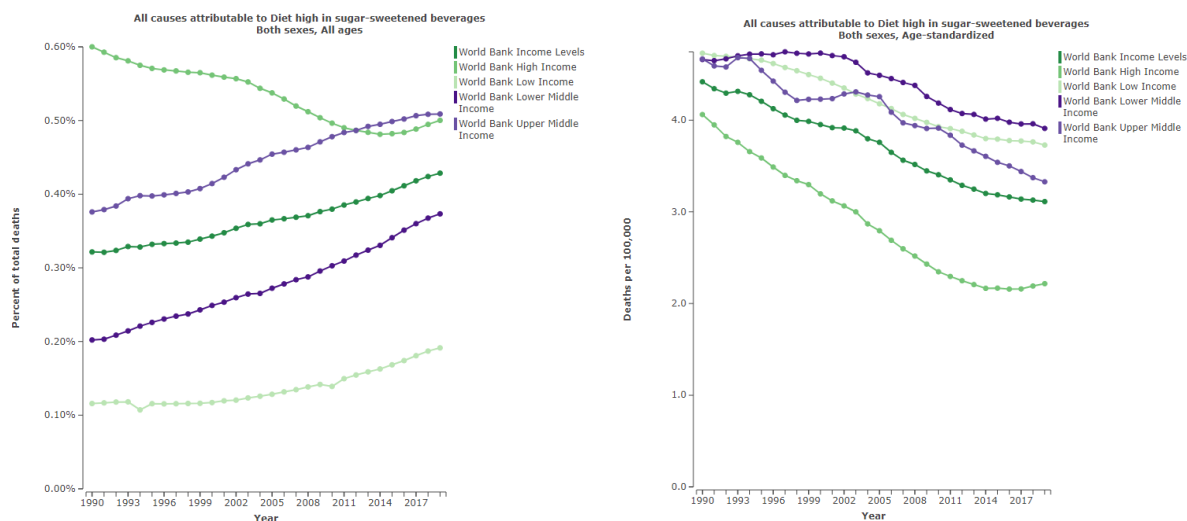


Figure 3.1.5 Diet high in trans fatty acids

By World Bank country income category; percent of all deaths (left panel); age-standardized rates (right panel)

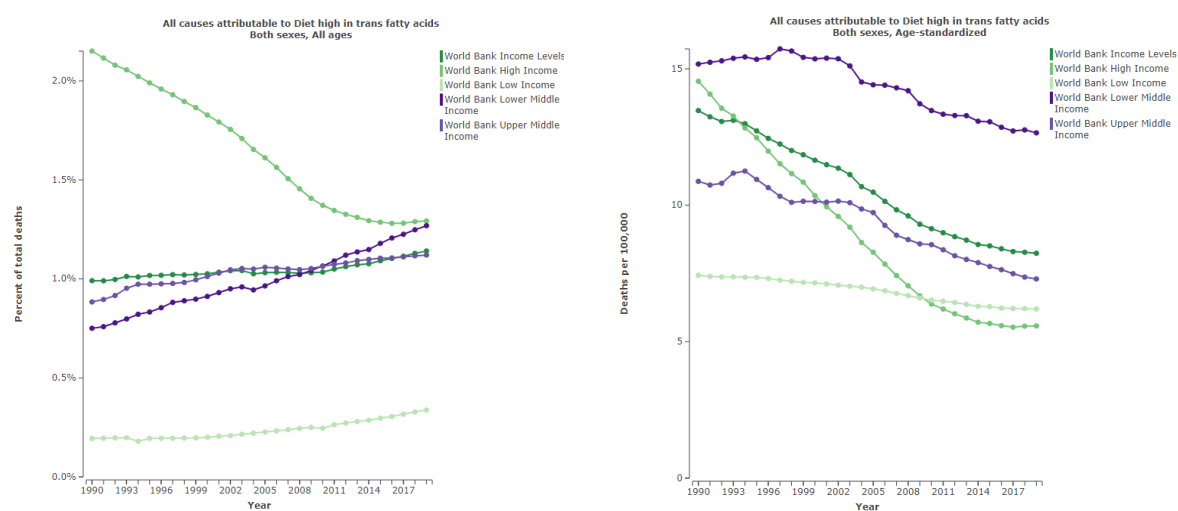


Figure 3.1.6 Alcohol use

By World Bank country income category; percent of all deaths (left panel); age-standardized rates (right panel)

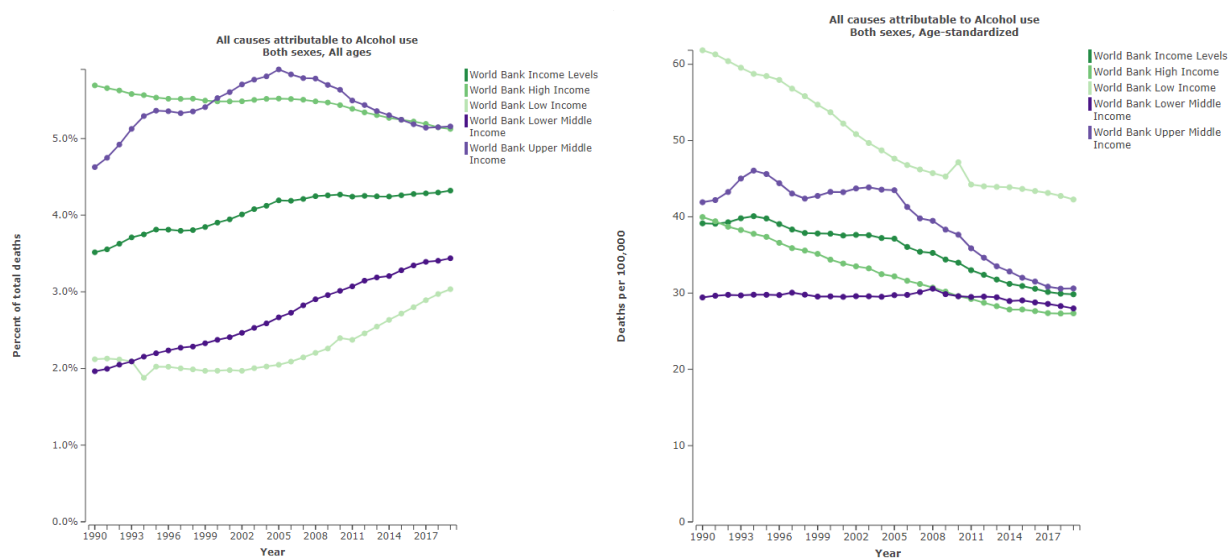
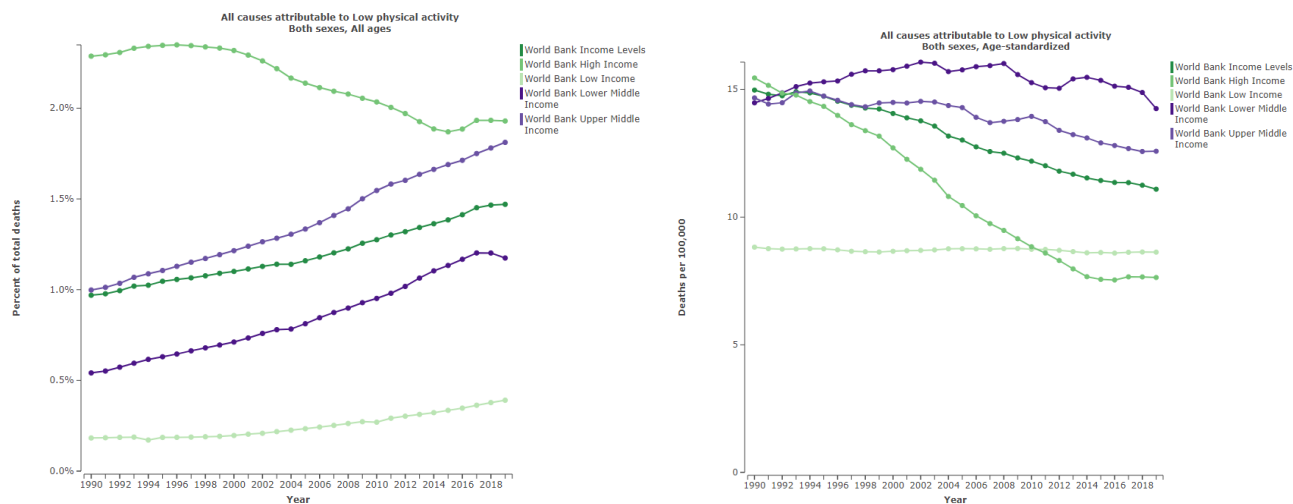


Figure 3.1.7 Low physical activity

By World Bank country income category; percent of all deaths (left panel); age-standardized rates (right panel)



3.2 Metabolic risks

Figure 3.2.1 High systolic blood pressure

By World Bank country income category; percent of all deaths (left panel); age-standardized rates (right panel)

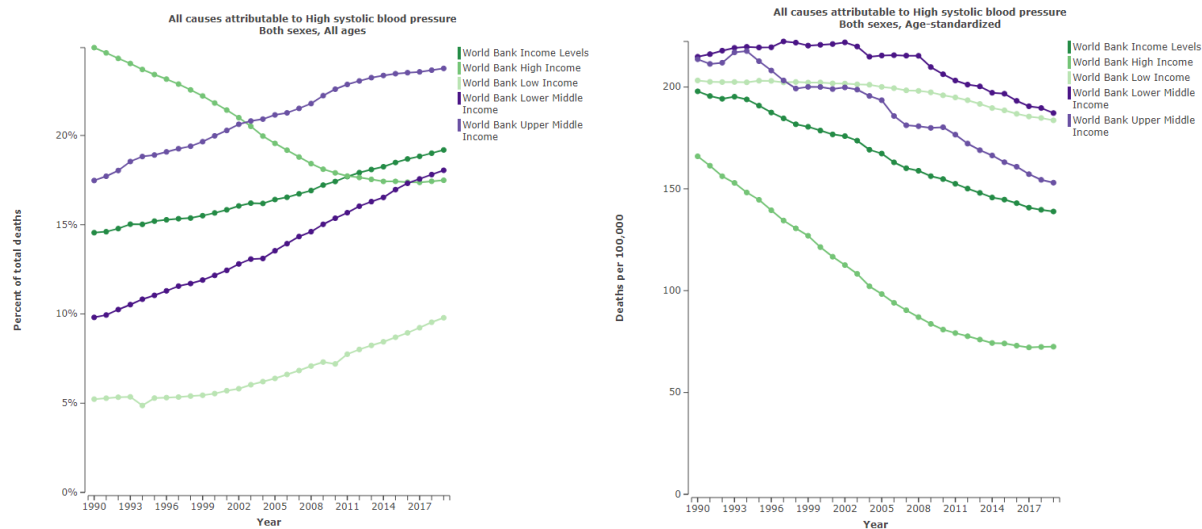


Figure 3.2.2 High body mass index

By World Bank country income category; percent of all deaths (left panel); age-standardized rates (right panel)

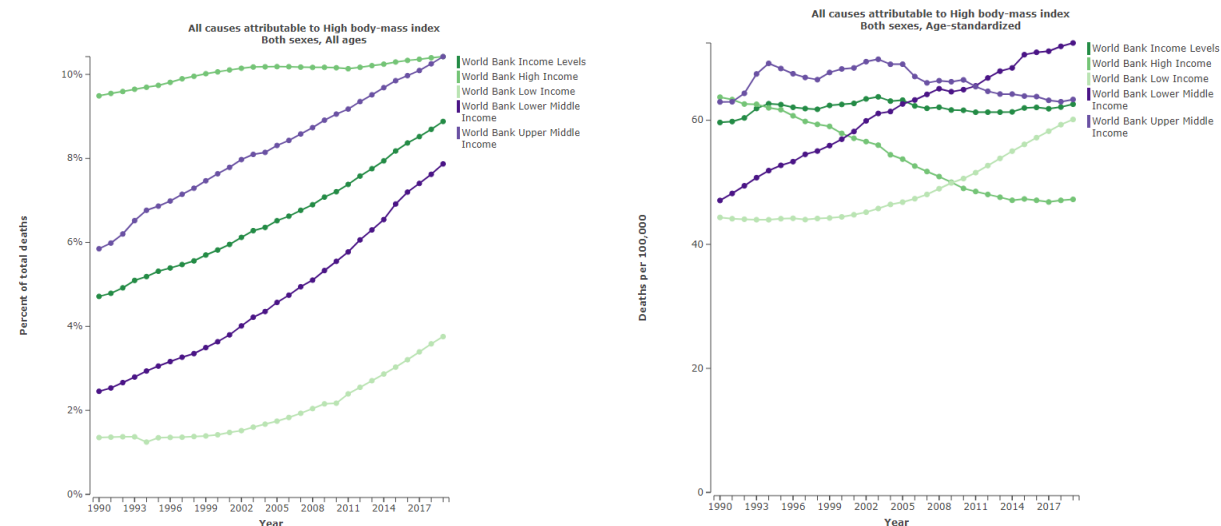


Figure 3.2.3 High blood glucose (as a risk factor)

By World Bank country income category; percent of all deaths (left panel); age-standardized rates (right panel)

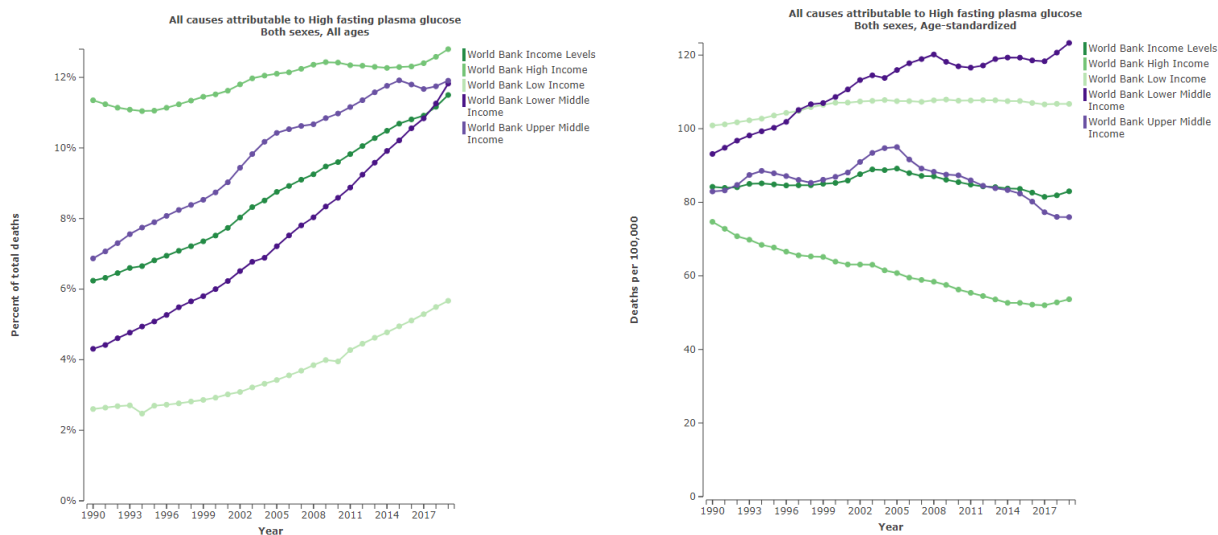
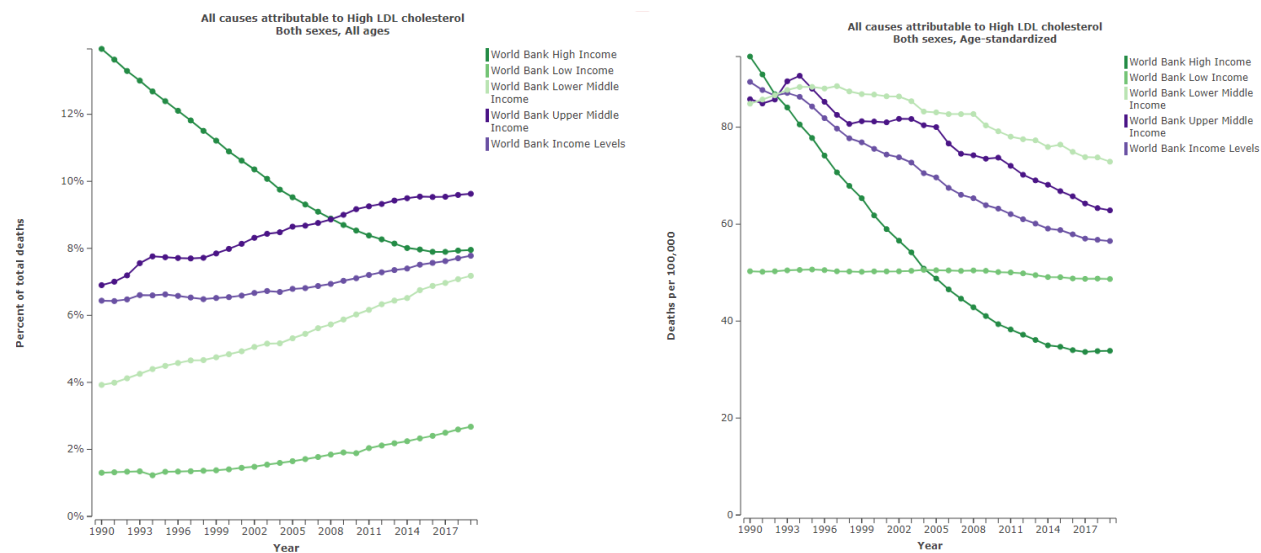


Figure 3.2.4 High LDL-cholesterol

By World Bank country income category; percent of all deaths (left panel); age-standardized rates (right panel)



3.3 Environmental risks

Figure 3.3.1 Particulate matter pollution

By World Bank country income category; percent of all deaths (left panel); age-standardized rates (right panel)

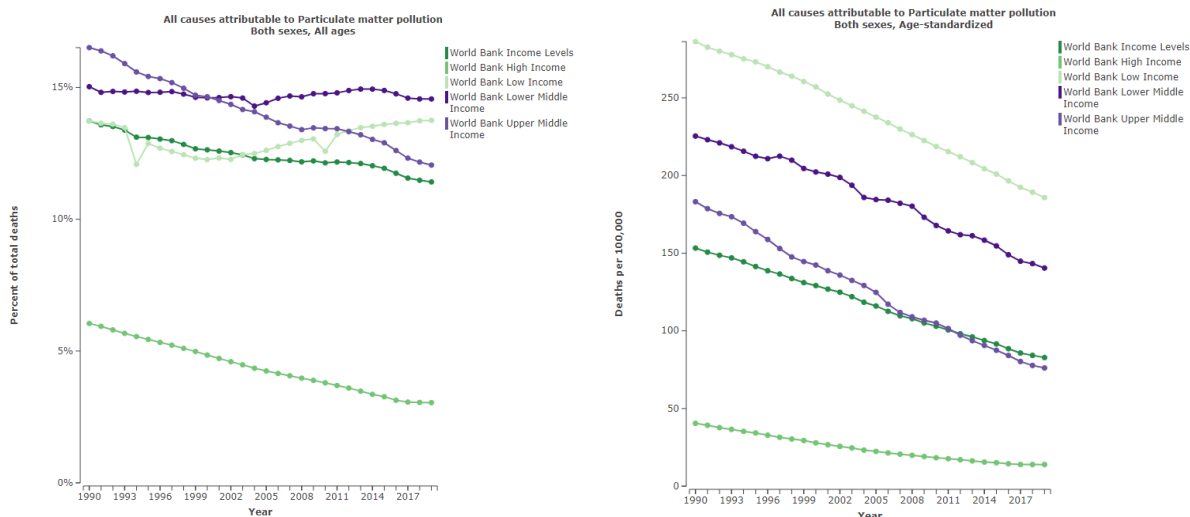


Figure 3.3.2 Ambient particulate matter pollution

By World Bank country income category; percent of all deaths (left panel); age-standardized rates (right panel)

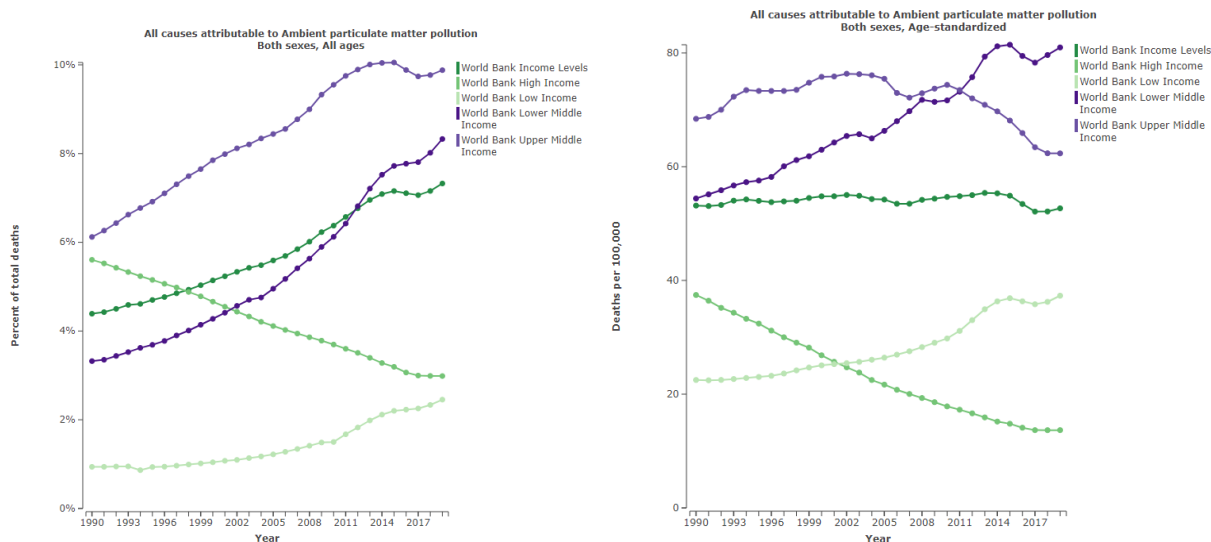
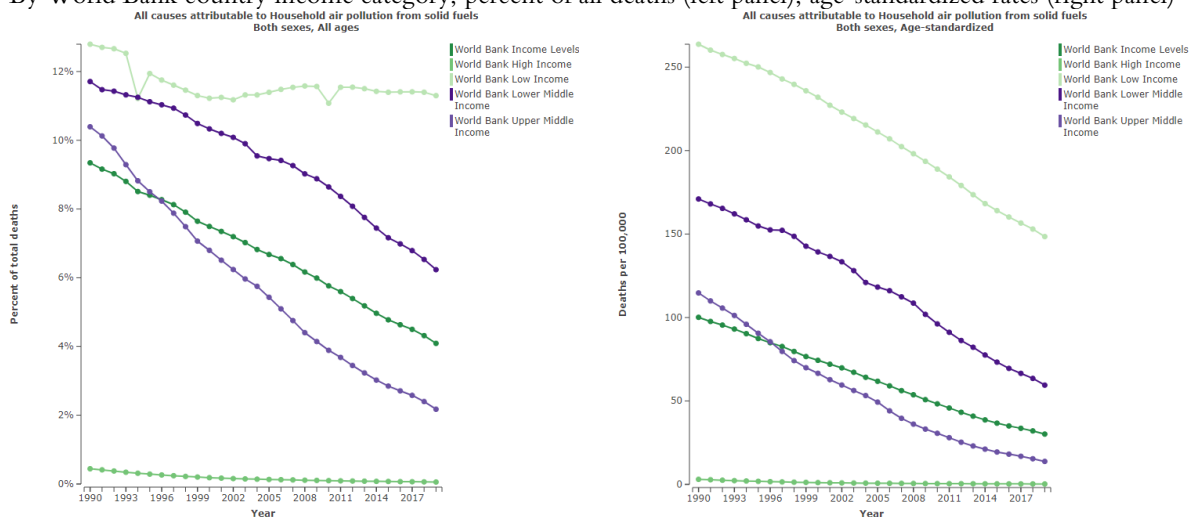


Figure 3.3.3 Household air pollution from solid fuels

By World Bank country income category; percent of all deaths (left panel); age-standardized rates (right panel)



4. Deaths attributable to risk factors in the population in 2019

Figure 4.1 Deaths attributable to risk factors (level 2) worldwide

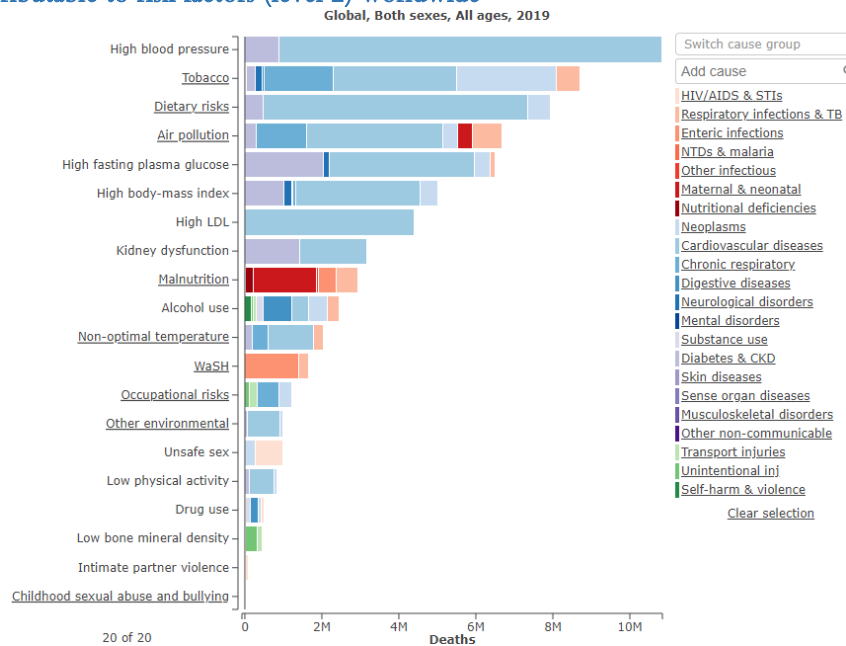


Figure 4.2 Deaths attributable to risk factors (level 2) by World Bank country income category

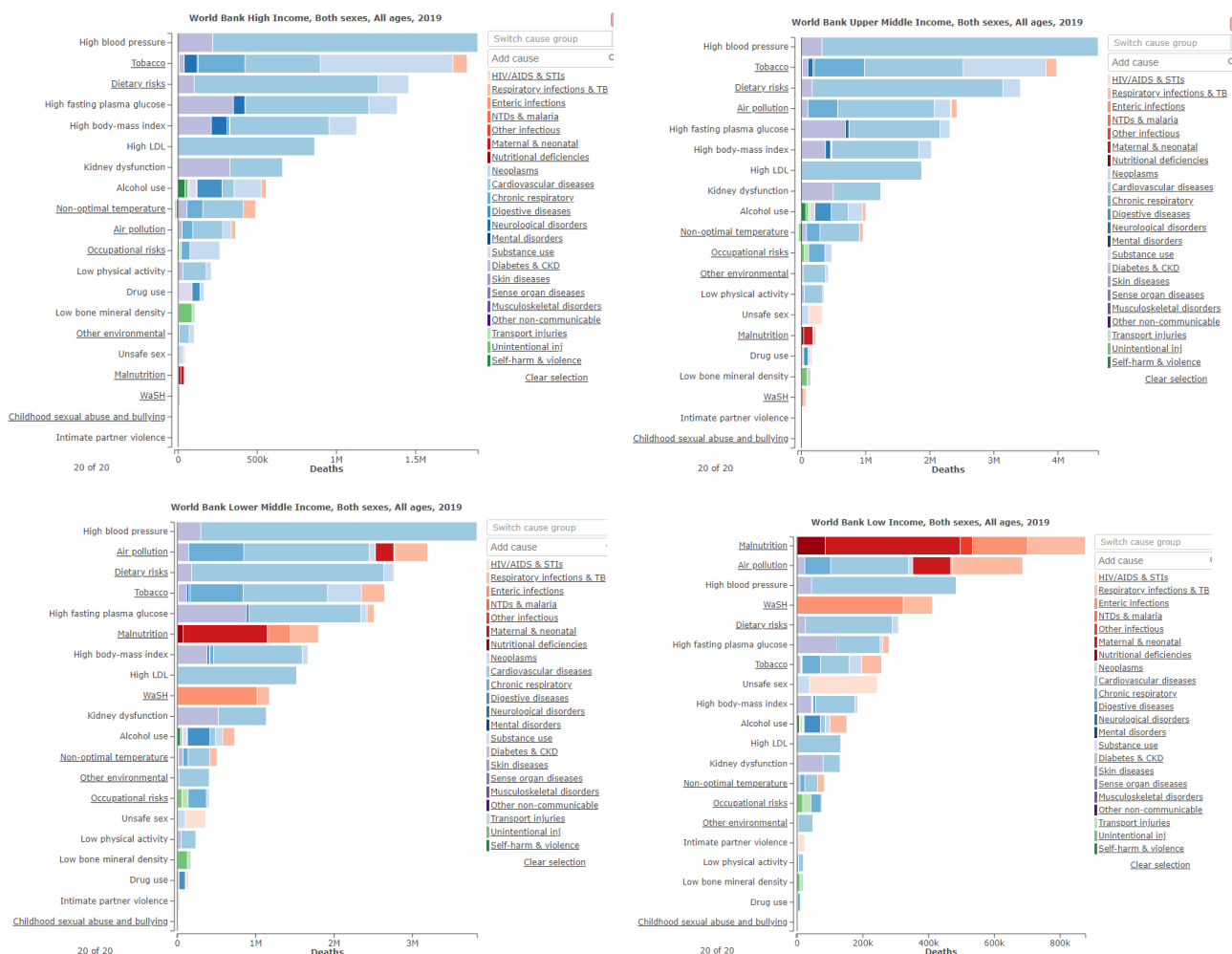


Figure 4.3 Deaths attributable to risk factors (level 3) worldwide

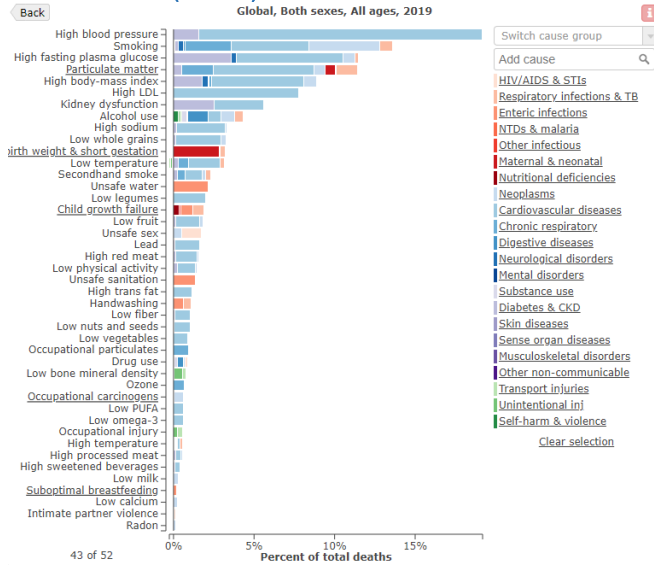
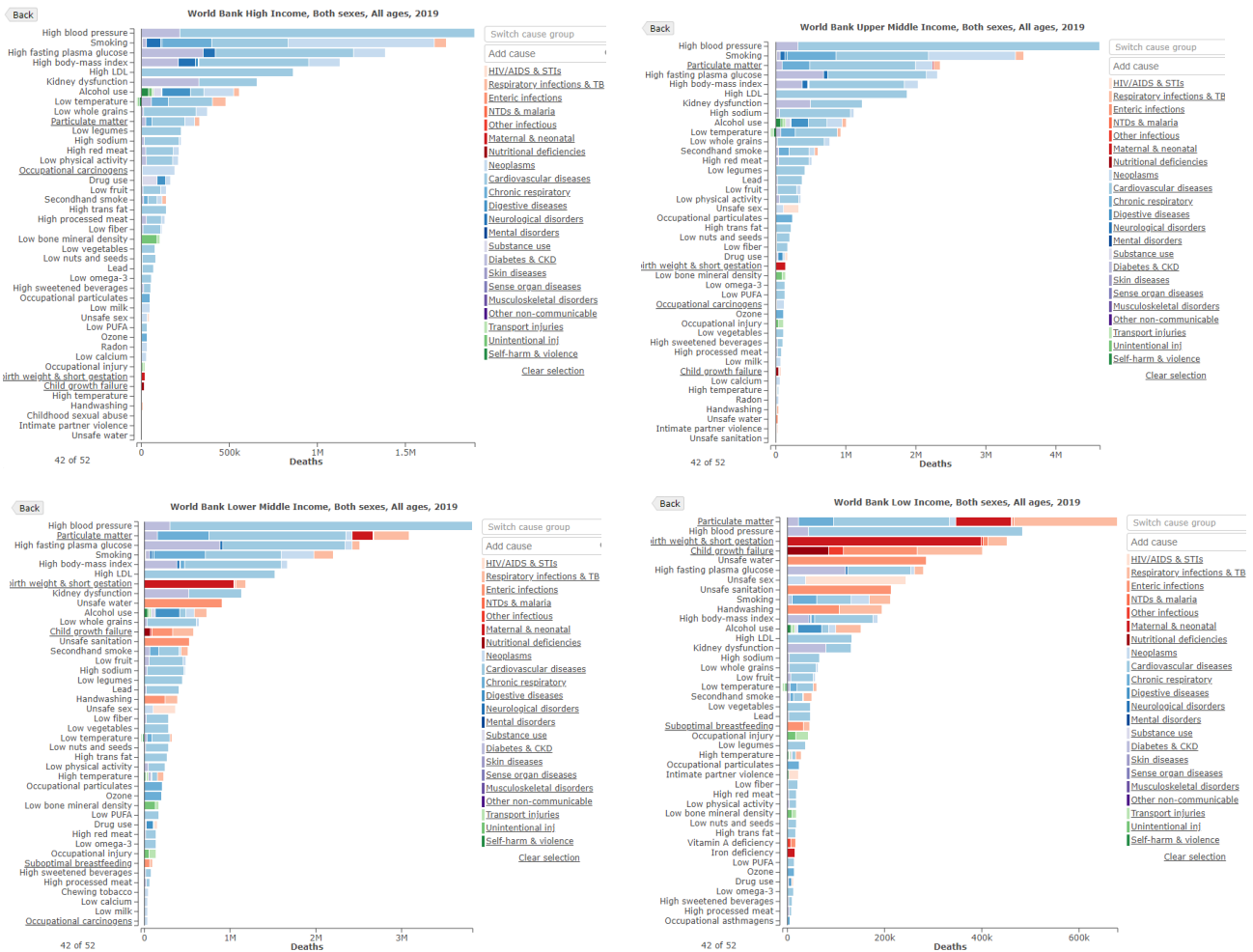


Figure 4.4 Proportion of deaths attributable to risk factors (level 3) by World Bank country income category



5. Ranking of broad-cause mortality in 1990 and 2019

Figure 5.1 Ranking of broad-cause mortality (level 2) in 1990 and 2019 worldwide

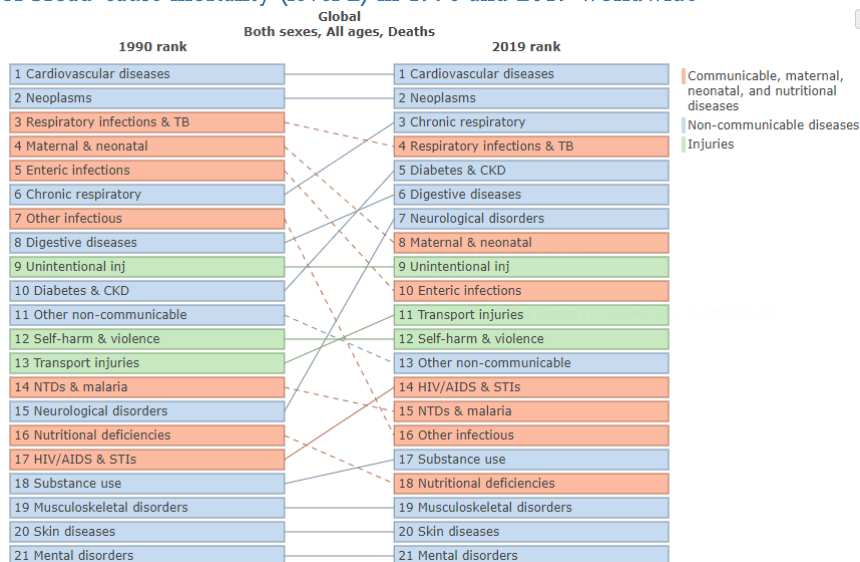


Figure 5.2 Ranking of broad-cause mortality (level 2) in 1990 and 2019 by World Bank country income category

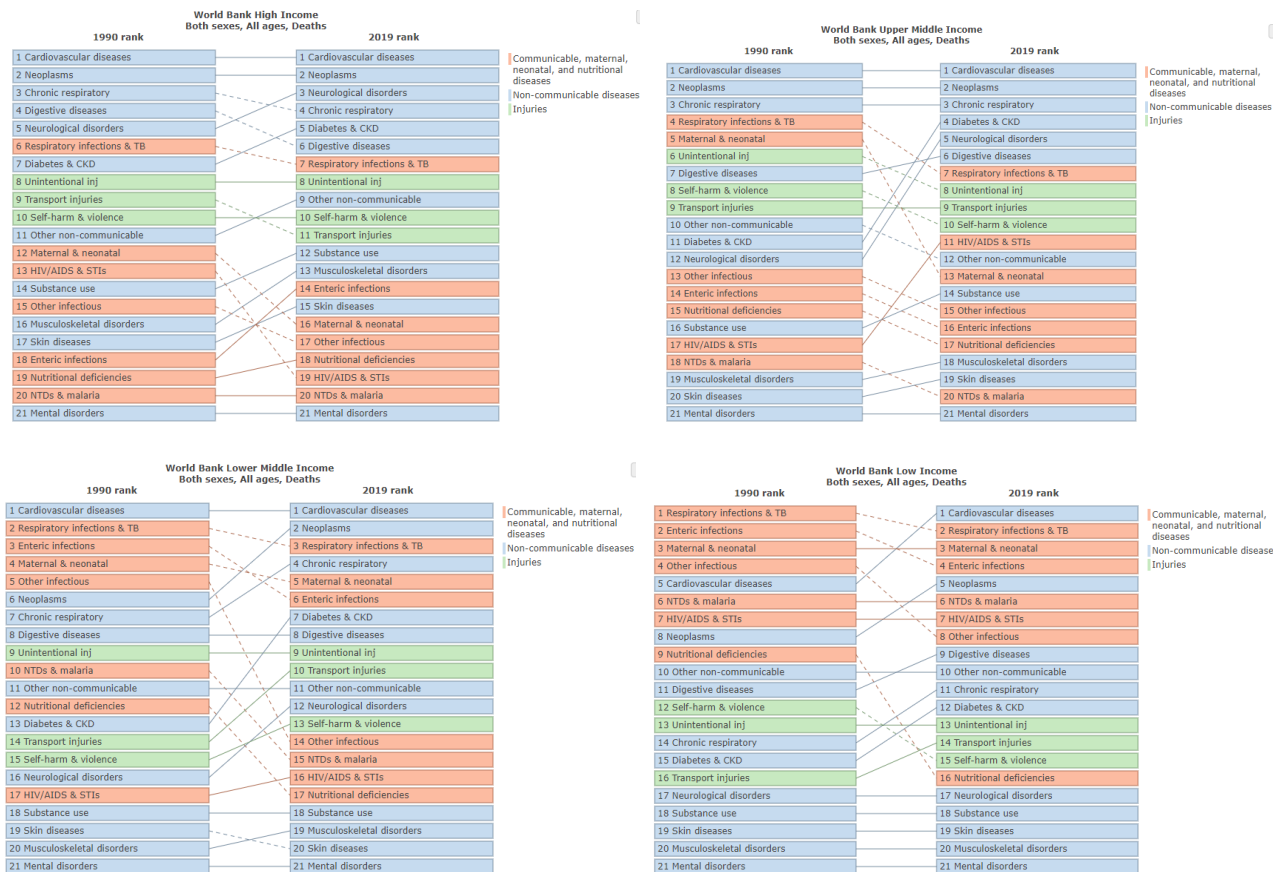


Figure 5.3 Ranking of broad-cause mortality (level 3) in 1990 and 2019 worldwide

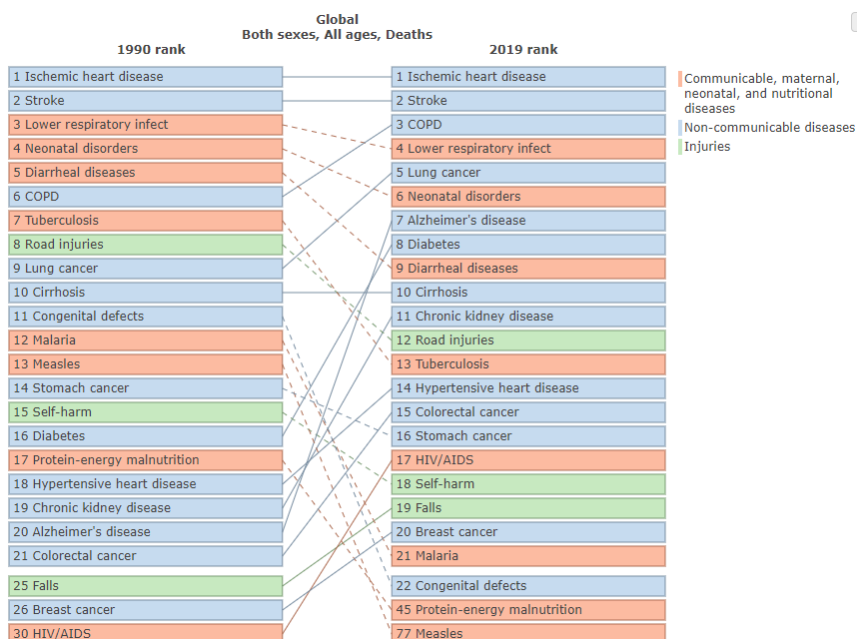
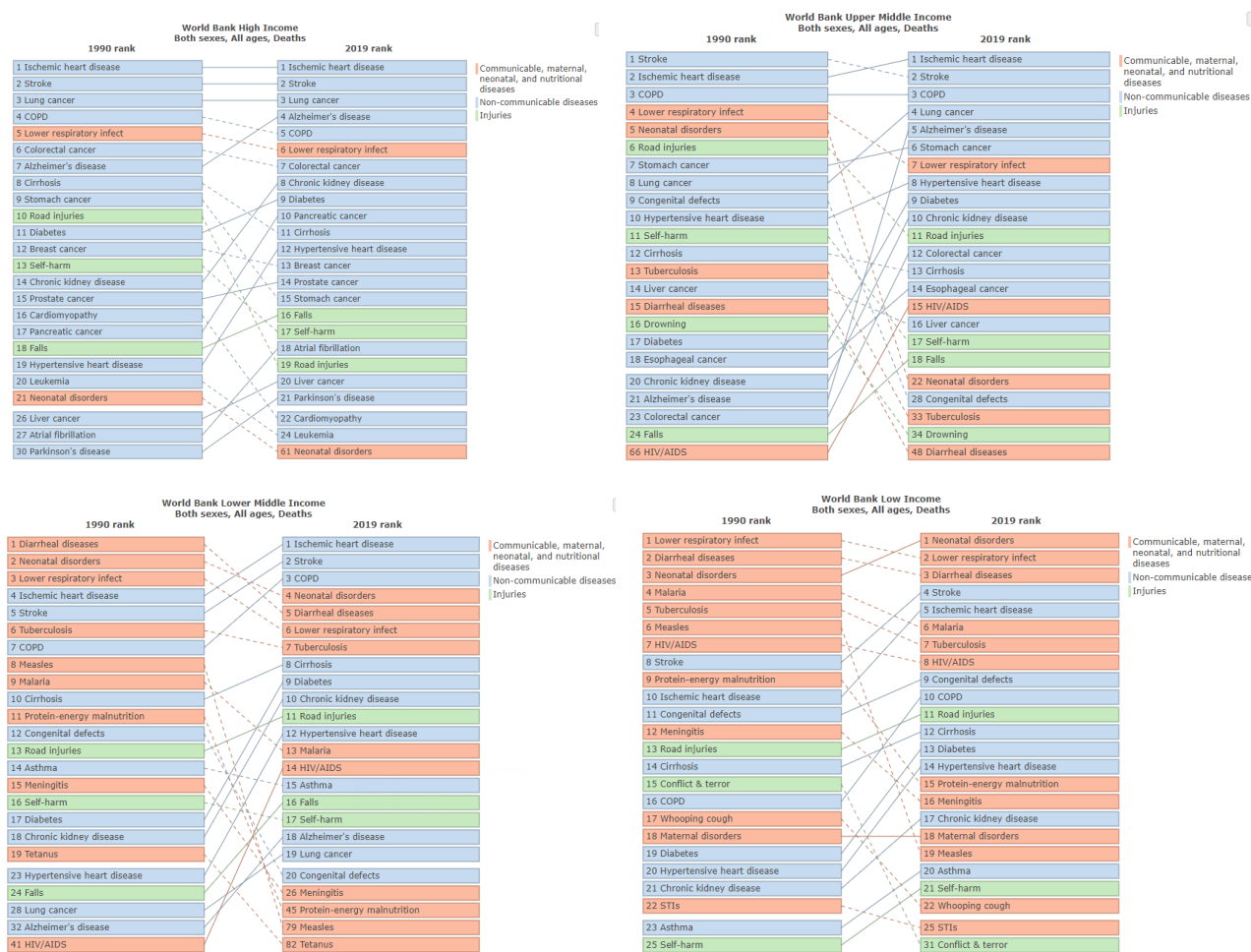
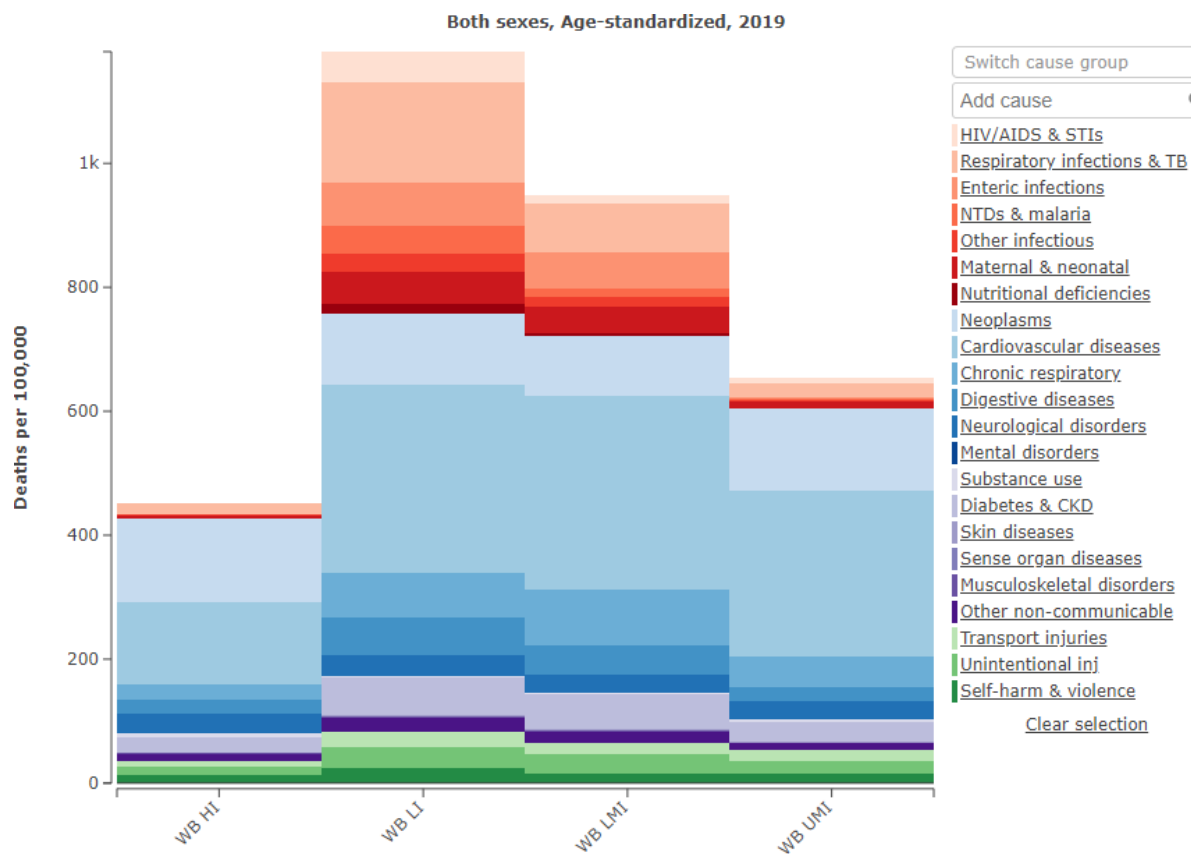


Figure 5.4 Ranking of broad-cause mortality (level 3) in 1990 and 2019 by World Bank country income category



6. Age-standardized mortality by World Bank country income category

Figure 6.1 Age-standardized mortality rates (including NCDs) by World Bank country income category in 2019



7. Mortality by cause and age in 1990 and 2019

Figure 7.1 Deaths by cause and age in 1990 and 2019 worldwide

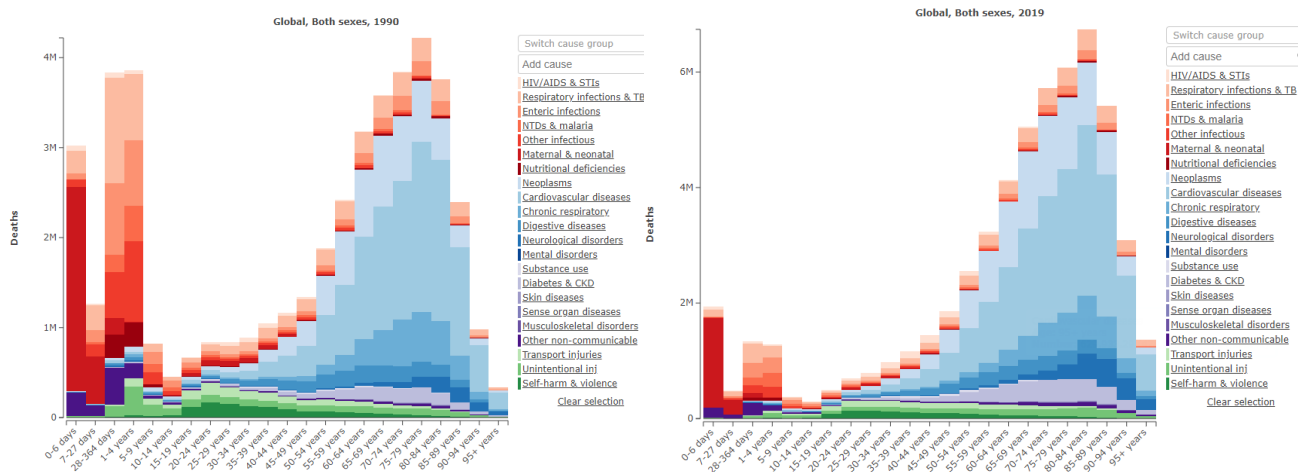


Figure 7.2 Deaths by cause and age by World Bank country income category (2019)

