



Pulmonary embolism during pregnancy: a 17-year single-center retrospective MDCT pulmonary angiography study

David C. Rotzinger^{1,2} · Vincent Dunet^{1,2} · Vesna Ilic³ · Olivier W. Hugli^{2,4} · Reto A. Meuli^{1,2} · Sabine Schmidt^{1,2}

Received: 20 May 2019 / Revised: 23 August 2019 / Accepted: 8 October 2019
© The Author(s) 2019

Abstract

Objectives To determine the prevalence of pulmonary embolism (PE) and alternative diagnoses detected by computed tomography pulmonary angiography (CTPA) in pregnant women; and to assess changes over time regarding radiation dose, technical quality, and examination frequency.

Materials and methods This retrospective study included all pregnant women referred for CTPA due to clinically suspected PE over 17 years. Two blinded radiologists reviewed the CTPAs in consensus with regard to PE, alternative diagnoses, and technical quality. We retrieved patient data regarding radiation dose metrics and associated clinical and laboratory parameters. Subgroup comparisons were performed (Wilcoxon and Kruskal-Wallis tests).

Results Of the 237 identified patients, 8 (3.3%) were excluded due to inadequate technical CTPA quality, and 229 patients were analyzed (mean age, 31.7 years; mean gestational age, 28 ± 7 weeks). The four different CT systems used over the study period had similar technical quality ($p = 0.28$). Of 229 patients 16 (7%) patients had PE, 144 (62.9%) had no abnormal findings, and 69 (30.1%) had an alternative diagnosis (consolidation, other pulmonary opacities, pleural effusion, and basal atelectasis). Gestational age, symptoms, and D-dimer levels were not significantly different between patients with or without PE ($p > 0.05$). Over time, radiation dose exposure decreased by 30% ($p < 0.001$), while the number of annual examinations increased by > 4 -folds.

Conclusions In pregnant women, CTPA rarely indicates PE and more often shows alternative diagnoses. Over 17 years, the use of CTPA in pregnancy has notably increased, while the radiation dose exposure has decreased by one third.

Key Points

- The use of CTPA in pregnancy has steadily risen over the last 17 years
- In pregnant women, CTPA rarely reveals PE and more often shows alternative diagnoses
- Recent technical improvements have substantially decreased the radiation dose exposure inherent in CTPA without reducing diagnostic image quality

Keywords Multidetector computed tomography · Computed tomography angiography · Pulmonary embolism · Hematologic pregnancy complications

✉ David C. Rotzinger
david.rotzinger@chuv.ch

¹ Department of Diagnostic and Interventional Radiology, Emergency Radiology Division, Lausanne University Hospital (CHUV), Rue du Bugnon 46, 1011 Lausanne, Switzerland

² Faculty of Biology and Medicine (FBM), University of Lausanne (UNIL), Lausanne, Switzerland

³ Centre d'Imagerie du Nord Vaudois (CINOV), Yverdon-les-Bains, Switzerland

⁴ Emergency Department, Lausanne University Hospital (CHUV), Lausanne, Switzerland

Abbreviations

CTDI _{vol}	Volume CT dose indexes
CTPA	Computed tomography pulmonary angiography
CUS	Compression ultrasound
DVT	Deep vein thrombosis
MDCT	Multidetector computed tomography
PE	Pulmonary embolism
ROI	Region of interest
SD	Standard deviation
V/Q	Ventilation-perfusion lung scan
VTE	Venous thromboembolism

Introduction

Pregnancy induces a prothrombotic state, with increased coagulation factors, decreased natural anticoagulants, and impairment of fibrinolysis. This hypercoagulable state most likely evolved during pregnancy to protect women from the risk of bleeding during miscarriage and childbirth. Several factors can increase the risk for venous thromboembolism (VTE) during pregnancy, including inherited thrombophilia, antiphospholipid syndrome, or previous history of thrombosis [1–3]. Compared to the non-pregnant population, pregnancy increases the risk of deep vein thrombosis (DVT) and pulmonary embolism (PE) by at least four times. Acute VTE events occur in 1–2 per 1000 pregnancies [3, 4]. PE is the leading non-obstetric cause of maternal death, with death occurring in 1 of 100 pregnant women diagnosed with PE [4].

Typical PE symptoms are non-specific during pregnancy, since normal pregnancies commonly involve dyspnea, tachycardia, and leg swelling [5]. Likewise, clinical probability scores, such as the Wells model [6] and Geneva criteria [7], have not been validated in pregnant women [8]. Moreover, the progression of a normal pregnancy involves a physiological increase of D-dimer levels and current evidence suggests that a D-dimer test—even using pregnancy-specific thresholds—should not be used as a stand-alone test to manage pregnant patients with suspected PE [9].

Due to these diagnostic difficulties, pregnant women with suspected PE require additional diagnostic imaging, particularly if compression ultrasound (CUS) of the legs is negative or not indicated due to the absence of leg symptoms. Despite well-established guidelines [10] recommending chest X-ray followed by perfusion scintigraphy, computed tomography pulmonary angiography (CTPA) is preferred over ventilation-perfusion lung scan (V/Q) in most North American [11] and European centers. CTPA has the advantage of being available around the clock, potentially unveiling alternative diagnoses [4, 12, 13]. Moreover, CTPA can accurately exclude clinically significant PE in pregnancy [14]. Even when using a low-dose protocol, CTPA is associated with radiation exposure to the mother and the fetus; however, this is considered warranted given the critical nature of PE [15].

In the present study, we aimed to assess the prevalence of CTPA-detected PE in a population of pregnant women, as well as the prevalence of associated or alternative diagnoses, and the clinical factors associated with PE. Secondary objectives included the assessment of qualitative image quality and dose exposure over a long period.

Materials and methods

This study was approved by our institutional ethics committee, and the requirement of informed consent was waived.

Study design and patients

In this single-center tertiary care retrospective study, we performed a systematic query of our computerized institutional database to identify all of the radiological reports from patients referred to our emergency department due to clinically suspected acute PE. A search using the four keywords “pulmonary embolism,” “pregnancy,” “pregnant,” and “computed tomography” yielded records of 237 CTPAs performed in pregnant patients from January 2000 to August 2018.

MDCT protocols

Over the study period, CTPA was performed using four different CT systems: a 4-row multidetector computed tomography (MDCT) system (LightSpeed QX/I; GE Healthcare) was used from January 2000 to November 2002 (14 examinations). A 16-row MDCT system (LightSpeed Ultra; GE Healthcare) was used from December 2002 to January 2006 (20 examinations). A 64-row MDCT system (LightSpeed VCT; GE Healthcare) was used from February 2006 to August 2015 (140 examinations). Finally, a 256-row MDCT system (Revolution CT; GE Healthcare) was used from September 2015 to August 2018 (63 examinations). Table 1 presents the detailed acquisition parameters for each of the four MDCT systems. All examinations were performed in helical acquisition mode. A power injector was used for intravenous (IV) injection of 80–120 mL iohexol (300 mg I/mL, Accupaque® 300; GE Healthcare) into an antecubital vein at a flow rate of 4–5 mL/s. Bolus tracking (SmartPrep) was applied, with the region of interest (ROI) centered on the main pulmonary artery. Acquisition was triggered when the CT attenuation exceeded 150 Hounsfield units. Patients were in a supine position, with their arms above their head, and were scanned from the diaphragm to the lung apices, at full inspiration. Starting in December 2016 (when using the 256-row MDCT system), we used three different tube potential settings (80, 100, or 120 kVp) depending on the patient’s body mass index (BMI): < 24, 24–26, or > 26 kg/m², respectively. The image reconstruction parameters were as follows: section thickness, 2.5 mm until January 2006 and 1.25 mm from February 2006; section overlap, 2.25 mm until January 2006 and 1 mm from February 2006; kernel, soft tissue; algorithm, FBP; display field-of-view, adjusted to the patient’s size. We retrieved the volume CT dose indexes (CTDI_{vol}) and dose-length products (DLP) from the dose exposure reports integrated into the DICOM images for each MDCT examination.

Image analysis

All MDCT images were analyzed using a picture archiving and communication system workstation (Vue PACS version 11.4; Carestream Health) and displayed with the default soft tissue

Table 1 Acquisition parameters of the four different MDCT systems

Parameter	MDCT system			
	4-row	16-row	64-row	256-row
Detector configuration	4-row	16-row	64-row	256-row
Tube potential, kVp	120	120	120	80, 100, or 120*
Noise index	N/A	18	18	15.5
Tube current, mA	170	180	100–300	100–580
Beam collimation, mm	4 × 3.75	16 × 1.25	64 × 0.625	128 × 0.625
Beam pitch	1.2	1.75	0.984	0.992
Gantry rotation time, s	0.8	0.5	0.6	0.5
Acquisition direction	Caudocranial	Caudocranial	Caudocranial	Craniocaudal
Number of examinations per year	4.8	6.3	14.6	21.0

MDCT multidetector computed tomography

*Depending on patient body mass index (BMI)

window (level, 50 HU; width, 350 HU). Raters were able to change windowing as needed to optimize vessel visualization. Each CTPA examination was reviewed by two radiologists (S.S. and V.L.) with 14 and 4 years of experience in thoracic imaging, respectively, who were blinded to all clinical and radiological information. Images were reviewed in consensus and not separately, since the interrater agreement for CTPA evaluation has already been assessed before [13, 14, 16].

On a per-examination basis, we visually evaluated the enhancement quality of the pulmonary arteries by the IV-injected contrast agent using a 4-point Likert scale: 0 = non-diagnostic (excluded), 1 = diagnostic image with presence of severe artifacts, 2 = good image quality with minor artifacts, and 3 = excellent image quality with no relevant artifacts [17]. The examinations were then classified as positive or negative for acute PE. Signs of acute PE were defined as a luminal filling defect that was either totally occlusive in a normal-sized or enlarged vessel, or centrally located and delineated by contrast medium [18]. We recorded the anatomical location of acute PE (i.e., main, lobar, segmental, and sub-segmental), and measured the maximal diameter of the pulmonary trunk. We also noted the following diagnoses—pulmonary consolidation, any pulmonary opacities other than consolidation (tree-in-bud pattern or ground-glass opacity), basal band-like atelectasis, and pleural effusion—that could occur in association with PE or as an alternative diagnosis in the absence of PE.

After evaluating the CTPA images, we searched the patients' clinical charts using a structured approach to retrieve the patients' characteristics, history, symptoms, blood test values, and risk factors for VTE (i.e., immobilization, obesity, thrombophilia, previous VTE, and smoking). From the patients' past medical history, we retrieved data regarding underlying heart disease, arterial hypertension, multiple gestations, parity, and use of assisted reproductive techniques. Presenting symptoms included sudden onset of chest pain, dyspnea, hemoptysis, desaturation (oxygen saturation of < 90% by pulse oximetry), or uni- or bilateral leg edema. We also recorded the following additional

clinical, laboratory, and anamnestic parameters: tachycardia (heart rate > 110 beats/min), S1Q3T3 pattern on ECG, D-dimer levels, CUS of the legs before CTPA, and ongoing therapeutic anticoagulation.

Statistical analysis

All statistical analyses were performed using Stata 13.1 software (StataCorp). Continuous variables are presented as mean ± standard deviation (SD) and categorical variables as numbers or proportions. The proportions of patients with PE, an alternative diagnosis, and no radiological findings were defined as the percentages of patients in these three categories among the whole study cohort. Between-group data comparisons were performed in a two-step fashion. Firstly, we compared patients with PE to patients without PE. Secondly, we made comparisons between patients with PE, patients with an alternative diagnosis and those with a normal CTPA (i.e., without any radiological findings). Between-group comparisons were performed using the Wilcoxon sign rank-sum or Kruskal-Wallis tests for continuous variables, and Fisher's exact test or the Chi-squared test, as appropriate, for categorical variables. For variables that significantly differed between groups, we performed logistic regression analysis with computation of the odds ratio (OR) and 95% confidence interval (CI). The Kruskal-Wallis test was used to compare image quality and dose parameters between the four MDCT scanners. A *p* value of < 0.05 was considered statistically significant. When needed, the significance level was corrected for multiple comparisons using the Bonferroni method.

Results

Patients and diagnoses

Of the 237 identified patients, 8 (3.3%) were excluded from analysis due to poor technical image quality. In 7 patients

(88%), the pulmonary arteries were too poorly enhanced and in one patient, whose CTPA revealed left lower lobe pneumonia, there were too many respiratory artifacts. None of these 8 excluded patients underwent further diagnostic imaging, and they were thus considered negative for VTE. Our analysis included a total of 229 patients with a mean age of 31.7 ± 5.7 years (range 18–49 years), and a mean gestational age of 28 ± 7 weeks (range 6–40 weeks). Among these patients, 16 (7%) had acute PE, 69 (30.1%) had an alternative diagnosis, and 144 (62.9%) exhibited no abnormal findings upon CTPA (Fig. 1). Clinically, pulmonary infection with/without pleural effusion was diagnosed in 17 patients (24.6%), fluid overload with pulmonary opacities (mostly of cardiac, renal, or septic origin) with/without pleural effusion in 21 patients (30.4%), basal atelectasis (mostly due to immobilization or abdominal diseases) with/without pleural effusion in 21 patients (30.4%), pulmonary opacities of another origin (i.e., interstitial lung disease, ARDS) in 8 patients (11.6%), and pleural effusion only in 2 patients (3%). Figures 2 and 3 provide examples of acute PE with associated pulmonary infarction and pulmonary consolidation, thus pulmonary infection, in pregnant patients.

In patients with PE, the position of the most proximal clot was identified as proximal ($n = 1$), lobar ($n = 4$), segmental ($n = 10$), or sub-segmental ($n = 1$). Of the 16 patients with PE, 8 had associated findings, including pulmonary opacities ($n = 2$), pleural effusion ($n = 2$), or basal atelectasis ($n = 4$). Among the 213 patients without PE, 35 (16.4%) had a single alternative diagnosis, while 34 (16.0%) had multiple alternative diagnoses. Mean pulmonary trunk diameter was 26 ± 2.8 mm among PE-positive patients, and 27 ± 3.7 mm among PE-negative patients ($p = 0.97$). Of the 229 patients included in the analysis, 16 (7%) underwent a chest X-ray before CTPA, and 88 (38.4%) underwent a lower extremity CUS that yielded negative results before CTPA. Among the 16 patients with PE, 7 (43.8%) had a normal CUS of the lower

extremities, and 3 (18.8%) underwent a chest X-ray before CTPA. After CTPA, perfusion scanning was performed in 8 (3.3%) of the 229 patients, but not in any patient in whom the CTPA findings indicated PE. These perfusion scans were negative for PE except in one case where the result was inconclusive because of minor bilateral subpleural perfusion abnormalities. In one patient (0.5%), CTPA was performed following an inconclusive perfusion scan.

Clinical characteristics associated with PE

Table 2 presents the baseline characteristics, risk factors, medical history, symptoms, presence of ECG abnormalities, and D-dimer levels for PE-positive and PE-negative patients, with univariate comparison. None of the evaluated parameters significantly differed between the two groups. Chest pain was present in 93.8% of patients with PE, and 72.3% of patients without PE, but this difference was not statistically significant ($p = 0.076$). D-dimer levels did not significantly differ between the two groups ($p = 0.91$), as illustrated in Fig. 4.

The cohort was subdivided into three groups: PE; alternative diagnosis; and no radiological diagnosis (Table 3). Subgroup analysis showed that desaturation was more frequent in patients with positive CTPA findings, being noted in 37.5% of PE patients, and 33.3% of patients with an alternative diagnosis, compared to only 13.4% of patients with no radiological diagnosis ($p = 0.001$). Likewise, uni- or bilateral leg edema was significantly more frequent in PE patients (31.3%), than in patients with an alternative diagnosis (8.7%) or no diagnosis (17.4%) ($p = 0.045$).

Logistic regression analysis revealed that desaturation predicted an abnormal CTPA (PE or an alternative diagnosis) compared to no radiological findings (OR 3.1, 95% CI 1.6–6.2, $p < 0.001$). Swelling of the legs predicted PE compared to

Fig. 1 Histogram shows the computed tomography pulmonary angiography (CTPA) findings in the patients without pulmonary embolism (PE) ($n = 213$), including alternative diagnoses, and completely normal CT examinations ($n = 144$, 67.6%)

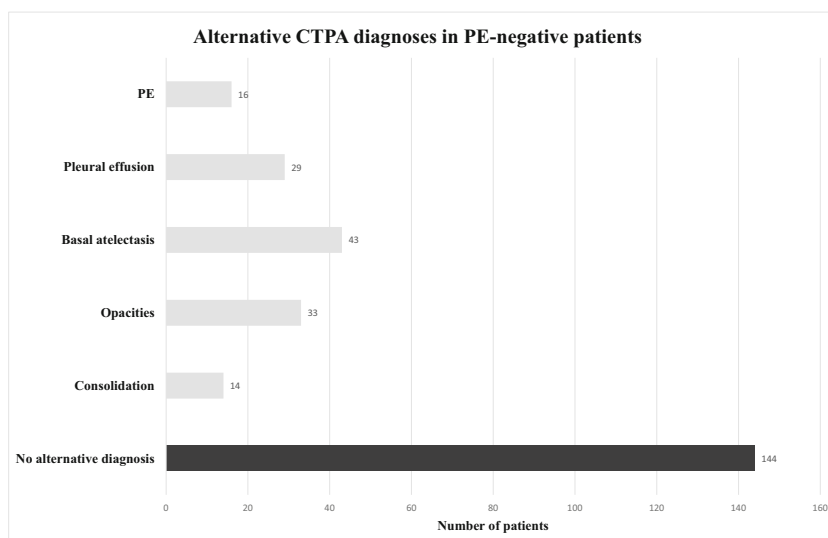
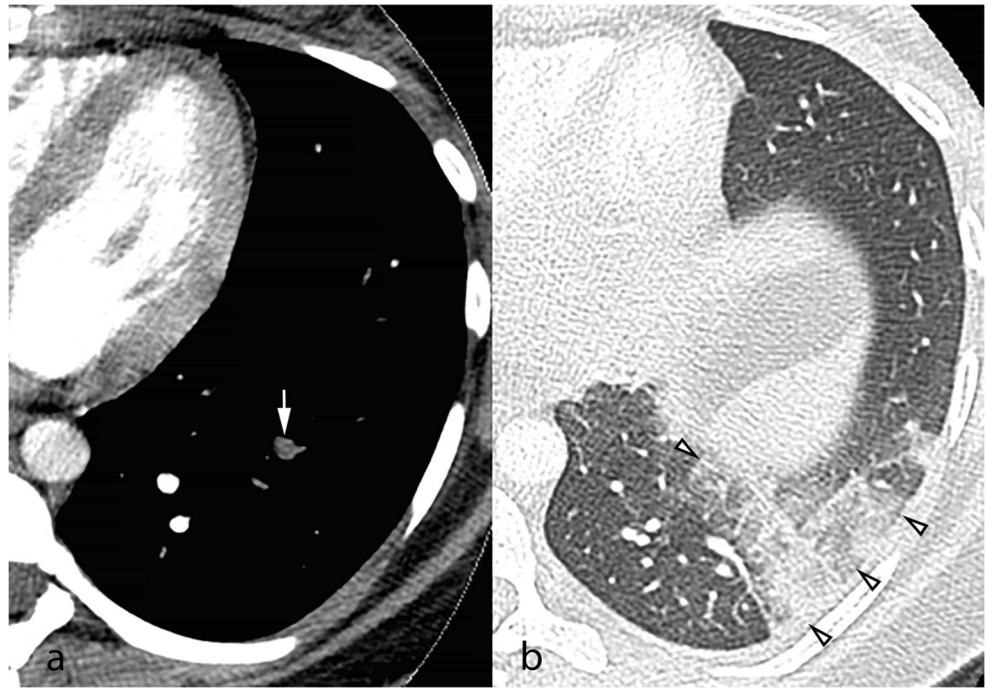


Fig. 2 Axial computed tomography pulmonary angiography images in the soft tissue (a) and lung windows (b), from a 25-year-old pregnant patient presenting with acute chest pain. A segmental pulmonary embolus was detected in the left lower lobe (a, white arrow), with associated triangular-shaped areas of subpleural alveolar density (b, arrowheads), consistent with pulmonary infarction



an alternative diagnosis (OR 4.8, 95% CI 1.2–18.4, $p = 0.023$).

Image quality and dose exposure

The visually assessed technical quality of each CTPA (i.e., the contrast medium enhancement of the pulmonary arteries) exhibited a similar distribution among the four CT types ($p =$

0.28). The mean scores were as follows: 4-MDCT, 2.1 ± 0.7 ($n = 11$); 16-MDCT, 2.6 ± 0.6 ($n = 20$); 64-MDCT, 2.5 ± 0.7 ($n = 136$); and 256-MDCT, 2.5 ± 0.7 ($n = 62$).

Both $CTDI_{vol}$ and DLP significantly differed between the four different MDCT systems ($p < 0.001$), showing a significant decrease with newer systems (Fig. 5). On the other hand, the number of CT examinations performed annually showed a gradual and substantial increase, ranging from 4.8 scans per

Fig. 3 Axial computed tomography pulmonary angiography images in the lung (a) and the soft tissue windows (b), from a 33-year-old pregnant patient presenting with acute chest pain and dyspnea. No pulmonary emboli were detected; however, the scan revealed left lower lobe consolidation consistent with pulmonary infection (a, black arrows)

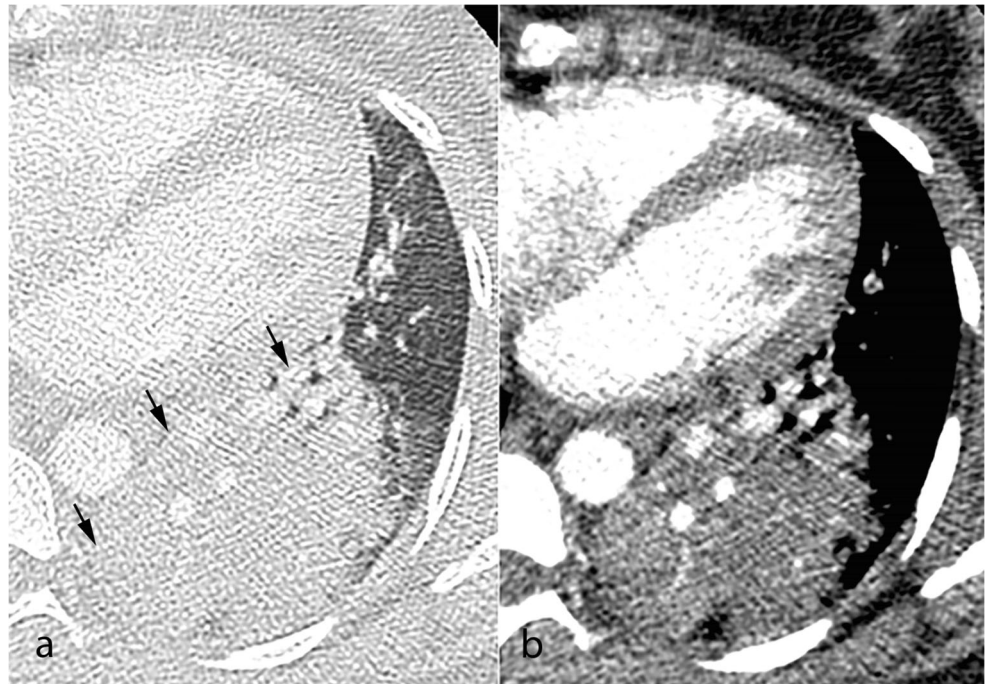


Table 2 Characteristics, risk factors, anamnestic parameters, and symptoms—compared between PE-positive and PE-negative patients by univariate analysis

Variables	PE positive (n = 16)	PE negative (n = 213)	p value
<i>Characteristics</i>			
Age, years	29.8 ± 5.6	31.9 ± 5.7	0.17
Gestational age, weeks	27.3 ± 8.1	27.8 ± 7.7	0.81
Anticoagulation	0 (0.0%)	15 (7.0%)	0.61
<i>Risk factors</i>			
Immobilization	2 (12.5%)	40 (1.9%)	0.74
Obesity	1 (6.3%)	24 (11.3%)	1.0
Thrombophilia	0 (0.0%)	10 (4.7%)	1.0
Previous VTE	0 (0.0%)	9 (4.25)	1.0
Smoking	1 (6.3%)	20 (9.4%)	1.0
<i>History</i>			
Heart disease	0 (0.0%)	9 (4.2%)	1.0
Hypertension	0 (0.0%)	11 (5.2%)	1.0
Multiple gestations	2 (12.5%)	26 (12.2%)	1.0
Parity	0.94 ± 1.18	0.66 ± 1.05	0.27
Assisted reproductive techniques	0 (0.0%)	5 (2.3%)	1.0
<i>Symptoms</i>			
Chest pain	15 (93.8%)	154 (72.3%)	0.076 [#]
Dyspnea	12 (75.0%)	167 (78.4)	0.76
Hemoptysis	2 (12.5%)	6 (2.8%)	0.10
Desaturation (O_2 saturation < 90%)	6 (37.5%)	43 (20.2%)	0.12
Lower extremity swelling	5 (31.3%)	31 (14.6%)	0.14
<i>Other parameters</i>			
Tachycardia *	5 (31.3%)	48 (23.8%)	0.51
Abnormal ECG	1 (6.3%)	21/213	1.0
D-dimers, ng/mL †	2238 ± 2056	1552 ± 1241	0.91

PE pulmonary embolism, VTE venous thromboembolism, ECG electrocardiogram

†D-dimers were available in 176 (78.2%) patients, including 8 with PE and 168 without

*Heart rate information was available for 218 (95.2%) patients, including 16 with PE and 202 without

[#] Patients with PE tended to more commonly experience chest pain

year with the 4-row CT system, to 21 scans per year with the 256-row system, constituting a > 4-fold rise over the last 17 years (Table 1).

Discussion

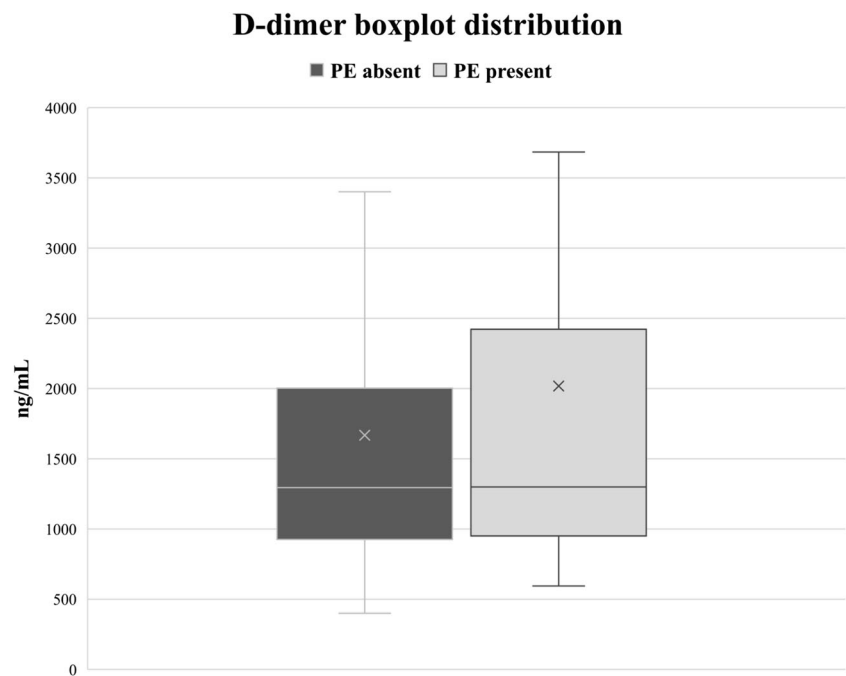
Our current results including 229 pregnant women indicate that 7% had acute PE, 30% had alternative diagnoses, and 63% had a normal CTPA. This low prevalence of PE indicates that CTPA was mainly useful for excluding PE in this population. Notably, alternative, and sometimes clinically important diagnoses were made from CTPA in one third of patients.

This was the first study to evaluate the use of CTPA for suspected PE in pregnant women over a period of 17 years. Over this timeframe, we observed a dramatic increase in the number of scans performed, starting from 4.8 examinations per year in 2000, and reaching 21 examinations per year by

2018, mirroring the results from an extensive single-center review performed in North America [19]. In that cohort, the rate of X-ray imaging in pregnant patients increased by > 100% over 10 years, mostly due to the use of CT. In our cohort, however, the rate of PE-positive CTPAs did not simultaneously increase over time, being 11.4% from January 2000 to November 2002, 0% from December 2002 to January 2006, 6.8% from February 2006 to August 2015, and 11.1% from September 2015 to August 2018. Thanks to technological improvements across the study period, the total radiation dose (DLP) decreased by 30% per scan, and CTDI_{vol} dropped by almost 60%, from 11.5 to 4.8 mGy, without cutting back on image quality.

Overall, PE was diagnosed in 7% of patients, which is in agreement with previously reported data [20–24]. This rate of PE-positive CTPAs is about half the rate usually reported in the general non-pregnant population, confirming the challenging nature of clinical assessment for PE during pregnancy [25,

Fig. 4 D-dimer boxplot distribution in patients with and without pulmonary embolism (PE) detected on computed tomography pulmonary angiography



26]. This difficulty is highlighted by the absence of clinical symptoms showing significant predictive value for PE. Furthermore, no clinical or laboratory factor (Table 2) was found to predict PE presence on CTPA. This is in agreement with Touhami et al, who recently reported that the revised Geneva and Wells scores are not helpful for PE prediction [8]. Only after subdividing the cohort into 3 groups (PE positive, alternative diagnosis, no findings on CTPA, Table 3), desaturation appeared to be a predictor of an abnormal CTPA (PE or alternative diagnosis), and leg swelling appeared to be a predictor of PE compared to an alternative diagnosis. Both are known signs that can be found in PE-patients but offer little advantage in the diagnostic workup of pregnant patients. Based on the latest prospective studies, there is currently no consensus regarding the exact D-dimer threshold that should be applied during pregnancy. Righini et al [23] used a conservative threshold of 500 $\mu\text{g/L}$. Van der Pol et al [22] used 1000 $\mu\text{g/L}$ for patients not meeting any YEARS criteria (clinical signs of DVT, hemoptysis, and PE being the most likely diagnosis), or 500 $\mu\text{g/L}$ in the presence of one or more YEARS criteria. Our results showed equal elevation of D-dimer levels in women with and without PE, and D-dimer levels of < 1000 $\mu\text{g/L}$ in one third of our patients with PE. These findings raise questions regarding the reliability of higher PE-specific D-dimer thresholds, as proposed by some authors [22].

In many hospitals worldwide and in our hospital, CTPA has become the first-line modality to exclude acute PE in pregnant women, despite the current guidelines advocating V/Q scanning, when available [27]. V/Q scanning following a normal chest X-ray remains a valid approach but is today

often used as a second-line test, when CTPA is inconclusive or contraindicated, such as in patients with renal impairment or intolerance to iodinated contrast agents. Only 9 (3.9%) patients in our cohort underwent V/Q scanning. There are multiple reasons for the predominance of CTPA, such as the immediate and widespread availability, the fast acquisition time, the high accuracy with direct visualization of vascular emboli, and the ability to provide alternative diagnoses [28]. This latter point is critical and well reflected in our present study cohort, where CTPA revealed alternative diagnoses four times more often than the presence of PE. In a multicenter study including 512 pregnant women who underwent CTPA, van Strijen et al found alternative diagnoses in 25% of patients, similar to our study, consisting mostly of pneumonia [29]. In these patients, a chest X-ray, which is usually performed before V/Q scanning, would have been abnormal and, thus, casting doubt on the added value of V/Q scanning. Indeed, according to the most recent European guidelines, V/Q scanning is generally not performed in such patients [30]. Radiation risk is a continuing concern, especially in the pregnant population given the radiation sensitivity of both the fetus and the maternal breast. Since CTPA delivers slightly lesser dose to the fetus than V/Q scanning, but a substantially higher dose to the maternal breast tissue [31, 32], V/Q scanning following a normal chest X-ray is still recommended by many scientific societies [27, 33]. Either way, women subjected to ionizing radiation should be made aware that V/Q carries a slightly higher risk of childhood cancer than CTPA (1 in 280,000 vs. 1 in 1,000,000, respectively), whereas CTPA is associated with a slightly increased lifetime risk of breast cancer (increasing from 1 in 200 to 1.1 in 200) [34]. Even so, the radiation risks of both V/Q

Table 3 Characteristics, risk factors, anamnestic parameters, and symptoms—compared among the three patient groups

Variables	PE positive (n = 16)	Alternative diagnosis (n = 69)	No findings on CTPA (n = 144)	<i>p</i> value
<i>Characteristics</i>				
Age, years	29.8 ± 5.6	32.2 ± 5.6	31.7 ± 5.9	0.27
Gestational age, weeks	27.3 ± 8.1	27.8 ± 7.3	27.9 ± 7.9	0.83
Anticoagulation	0 (0%)	2 (2.9%)	13 (9.0%)	0.18
<i>Risk factors</i>				
Immobilization	2 (12.5%)	18 (26.1%)	22 (15.3%)	0.17
Obesity (BMI > 30 kg/m ²)	1 (6.3%)	5 (7.2%)	19 (13.2%)	0.46
Thrombophilia	0 (0.0%)	1 (1.5%)	9 (6.3%)	0.29
Previous VTE	0 (0.0%)	1 (1.5%)	8 (5.6%)	0.43
Smoking	1 (6.3%)	8 (11.6%)	12 (8.3%)	0.75
<i>History</i>				
Heart disease	0 (0.0%)	5 (7.2%)	4 (2.8%)	0.24
Hypertension	0 (0.0%)	6 (8.7%)	5 (3.5%)	0.21
Multiple gestations	2 (12.5%)	11 (15.9%)	15 (10.4%)	0.48
Parity	0.94 ± 1.18	0.64 ± 1.11	0.67 ± 1.02	0.38
Assisted reproductive techniques	0 (0.0%)	3 (4.3%)	2 (1.4%)	0.54
<i>Symptoms</i>				
Chest pain	15 (93.8%)	52 (75.4%)	102 (70.8%)	0.13
Dyspnea	12 (75.0%)	57 (82.6%)	110 (76.4%)	0.55
Hemoptysis	2 (12.5%)	2 (2.9%)	4 (2.8%)	0.17
Desaturation (<i>O</i> ₂ saturation < 90%)	6‡ (37.5%)	23§ (33.3%)	20 (13.8%)	0.001
Lower extremity swelling	5° (31.3%)	6 (8.7%)	25 (17.4%)	0.045
<i>Other parameters</i>				
Tachycardia*	5 (31.3%)	22 (34.4%)	26 (19%)	0.056
S1Q3 EKG	1 (6.3%)	5 (7.2%)	16 (11.1%)	0.71
D-dimers, ng/mL†	2238 ± 2056	1550 ± 824	1553 ± 1377	0.71

Italicized *p* values are statistically significant

PE pulmonary embolism, CTPA computed tomography pulmonary angiography, VTE venous thromboembolism, ECG electrocardiogram

†D-dimer levels were available for 176 patients (78.2%), including 8 with PE, 48 with an alternative diagnosis and 120 with no radiological findings

*Heart rate information was available in 218 patients (95.2%), including 16 with PE, 64 with an alternative diagnosis and 137 with no radiological findings

§*p* = 0.001 compared to patients without radiological diagnosis

‡*p* = 0.016 compared to patients without radiological diagnosis

°*p* = 0.029 compared to patients with an alternative diagnosis

scanning and CTPA are well below the threshold for fetal complications and should not prevent pregnant women from receiving either imaging test [35, 36].

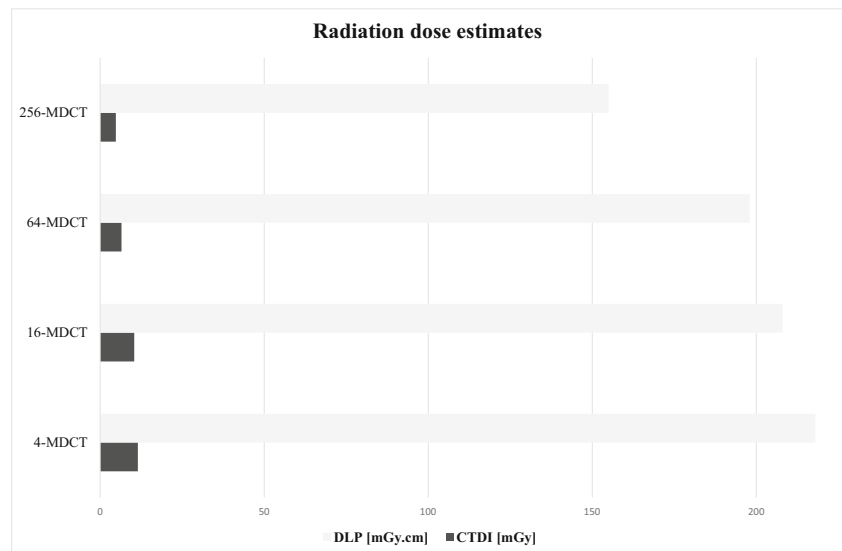
Finally, according to current guidelines [10], CUS of the lower extremities was performed only in patients showing signs and symptoms of DVT (i.e., leg pain or swelling), which was the case in 38.4% of patients. The remaining patients directly underwent CTPA.

Recently proposed management algorithms for acute PE suspicion in pregnant women do no longer include chest X-rays and focus on structuring the clinical and paraclinical workup to appropriately select patients who will likely benefit from CTPA [22, 23]. At our hospital, chest X-rays were

avoided in most patients (93%) to reduce radiation exposure, based on the limited role of X-rays to drive management strategies in pregnant women [9]. Among the 16 PE-positive patients, 8 (50%) had parenchymal abnormalities on CTPA, and 2 (12.5%) had pleural effusion. This substantiates the potential diagnostic confusion that could be caused by chest X-ray in these pregnant women, as described by Goodacre et al [9].

Our study had several limitations. First, its retrospective nature entailed an inclusion bias that likely led to underestimation of the true prevalence of PE, since a few patients may have had positive CUS performed directly at admission due to leg symptoms and would then have been treated without CTPA. Second, we could not provide a comprehensive

Fig. 5 Histogram shows dose exposure estimates expressed as dose-length product (DLP) and dose-length product (DLP) and volume computed tomography dose index (CTDI_{vol}). MDCT multidetector computed tomography



radiation dose comparison between CTPA and perfusion scanning. Furthermore, we had no information regarding the affected side in patients with lower extremity symptoms. Heart rate data were not available for all patients, and some women did not undergo D-dimer testing. Finally, our low rate of PE (7%) may have prevented us from detecting significant differences between our two groups. However, our PE prevalence was nearly three times higher than previously described in pregnant women [37], and nearly double compared with data published by van der Pol et al [22]. Only Righini et al [23] reported a similar prevalence of PE (7.1%).

In conclusion, our present study did not identify clinical and laboratory parameters that were significantly associated with PE, emphasizing the important role of CTPA for excluding PE in pregnant women. Moreover, our findings indicated a low yield of PE-positive CTPA results, which suggest the need for new diagnostic strategies to safely exclude PE with fewer radiological examinations. However, over the last 17 years, CTPA was also able to reveal alternative diagnoses in one third of patients, while maintaining image quality and limiting radiation dose exposure.

Funding information The authors state that this work has not received any funding.

Compliance with ethical standards

Guarantor The scientific guarantor of this publication is Dr Sabine Schmidt.

Conflict of interest The authors of this manuscript declare no relationships with any companies whose products or services may be related to the subject matter of the article.

Statistics and biometry One of the authors (V.D.) has significant statistical expertise.

Informed consent Written informed consent was waived by the Institutional Review Board.

Ethical approval Institutional Review Board approval was obtained.

Methodology

- Retrospective
- Cross-sectional study
- Performed at one institution

Open Access This article is distributed under the terms of the Creative Commons Attribution 4.0 International License (<http://creativecommons.org/licenses/by/4.0/>), which permits unrestricted use, distribution, and reproduction in any medium, provided you give appropriate credit to the original author(s) and the source, provide a link to the Creative Commons license, and indicate if changes were made.

References

1. Hui C, Lili M, Libin C et al (2012) Changes in coagulation and hemodynamics during pregnancy: a prospective longitudinal study of 58 cases. *Arch Gynecol Obstet* 285:1231–1236
2. Marik PE, Plante LA (2008) Venous thromboembolic disease and pregnancy. *N Engl J Med* 359:2025–2033
3. Barco S, Nijkeuter M, Middeldorp S (2013) Pregnancy and venous thromboembolism. *Semin Thromb Hemost* 39:549–558
4. Marik PE (2010) Venous thromboembolism in pregnancy. *Clin Chest Med* 31:731–740
5. Kline JA, Richardson DM, Than MP, Penaloza A, Roy PM (2014) Systematic review and meta-analysis of pregnant patients investigated for suspected pulmonary embolism in the emergency department. *Acad Emerg Med* 21:949–959
6. Wells PS, Anderson DR, Rodger M et al (2001) Excluding pulmonary embolism at the bedside without diagnostic imaging: management of patients with suspected pulmonary embolism presenting to the emergency department by using a simple clinical model and d-dimer. *Ann Intern Med* 135:98–107

7. Le Gal G, Righini M, Roy P-M et al (2006) Prediction of pulmonary embolism in the emergency department: the revised Geneva score. *Ann Intern Med* 144:165–171
8. Touhami O, Ben MS, Bannasr L et al (2018) Are the Wells Score and the Revised Geneva Score valuable for the diagnosis of pulmonary embolism in pregnancy? *Eur J Obstet Gynecol Reprod Biol* 221:166–171
9. Goodacre S, Horspool K, Nelson-Piercy C et al (2018) The DiPEP study: an observational study of the diagnostic accuracy of clinical assessment, D-dimer and chest x-ray for suspected pulmonary embolism in pregnancy and postpartum. *BJOG* 126:383–392
10. Leung AN, Bull TM, Jaeschke R et al (2012) American Thoracic Society documents : an official American Thoracic Society / Society of Thoracic Radiology clinical practice guideline — evaluation of suspected pulmonary embolism in pregnancy. *Radiology* 262:635–646
11. Bhargavan M, Sunshine JH, Hervey SL, Jha S, Vializ J, Owen JB (2009) The actual role of CT and ventilation-perfusion scanning in workup for suspected pulmonary embolism: Evidence from hospitals. *AJR Am J Roentgenol* 193:1324–1332
12. Miller MA, Chalhoub M, Bourjeily G (2011) Peripartum pulmonary embolism. *Clin Chest Med* 32:147–164
13. Revel MP, Cohen S, Sanchez O et al (2011) Pulmonary embolism during pregnancy: diagnosis with lung scintigraphy or CT angiography? *Radiology* 258:590–598
14. Tamjeedi B, Correa J, Semionov A, Mesuroolle B (2015) Interobserver agreement between on-call radiology resident and general radiologist interpretations of CT pulmonary angiograms and CT venograms. *PLoS One* 10:e0126116
15. Pahade JK, Litmanovich D, Pedrosa I, Romero J, Bankier AA, Boiselle PM (2009) Quality initiatives: imaging pregnant patients with suspected pulmonary embolism: what the radiologist needs to know. *Radiographics* 29:639–654
16. Lu GM, Luo S, Meinel FG et al (2014) High-pitch computed tomography pulmonary angiography with iterative reconstruction at 80 kVp and 20 mL contrast agent volume. *Eur Radiol* 24:3260–3268
17. Hendriks BMF, Eijssvoogel NG, Kok M, Martens B, Wildberger JE, Das M (2018) Optimizing pulmonary embolism computed tomography in the age of individualized medicine: a prospective clinical study. *Invest Radiol* 53:306–312
18. Han D, Lee KS, Franquet T et al (2003) Thrombotic and nonthrombotic pulmonary arterial embolism: spectrum of imaging findings. *Radiographics* 23:1521–1539
19. Lazarus E, Debenedectis C, North D, Spencer PK, Mayo-Smith WW (2009) Utilization of imaging in pregnant patients: 10-year review of 5270 examinations in 3285 patients—1997–2006. *Radiology* 251:517–524
20. Sheen JJ, Haramati LB, Natenzon A et al (2018) Performance of low-dose perfusion scintigraphy and CT pulmonary angiography for pulmonary embolism in pregnancy. *Chest* 153:152–160
21. Cahill AG, Stout MJ, Macones GA, Bhalla S (2009) Diagnosing pulmonary embolism in pregnancy using computed-tomographic angiography or ventilation-perfusion. *Obstet Gynecol* 114:124–129
22. van der Pol LM, Tromeur C, Bistervels IM et al (2019) Pregnancy-adapted YEARS algorithm for diagnosis of suspected pulmonary embolism. *N Engl J Med* 380:1139–1149
23. Righini M, Robert-Ebadi H, Elias A et al (2018) Diagnosis of pulmonary embolism during pregnancy: a multicenter prospective management outcome study. *Ann Intern Med* 169:766–773
24. van Mens TE, Scheres LJJ, de Jong PG, Leeftang MMG, Nijkeuter M, Middeldorp S (2017) OC-7a: Imaging for the exclusion of pulmonary embolism in pregnancy – a Cochrane Systematic Review of diagnostic test accuracy. *Thromb Res* 151:S107
25. Chen Z, Deblois S, Toporowicz K et al (2019) Yield of CT pulmonary angiography in the diagnosis of acute pulmonary embolism: short report. *BMC Res Notes* 12:41
26. Yan Z, Ip IK, Raja AS, Gupta A, Kosowsky JM, Khorasani R (2017) Yield of CT pulmonary angiography in the emergency department when providers override evidence-based clinical decision support. *Radiology* 282:717–725
27. Wan T, Skeith L, Karovitch A, Rodger M, Le Gal G (2017) Guidance for the diagnosis of pulmonary embolism during pregnancy: consensus and controversies. *Thromb Res* 157:23–28
28. Remy-Jardin M, Pistolesi M, Goodman LR et al (2007) Management of suspected acute pulmonary embolism in the era of CT angiography: a statement from the Fleischner Society. *Radiology* 245:315–329
29. van Strijen MJ, Bloem JL, de Monyé W et al (2005) Helical computed tomography and alternative diagnosis in patients with excluded pulmonary embolism. *J Thromb Haemost* 3:2449–2456
30. Konstantinides SV, Torbicki A, Agnelli G et al (2014) 2014 ESC Guidelines on the diagnosis and management of acute pulmonary embolism. *Eur Heart J* 35:3033–3069
31. Harris BS, Bishop KC, Kuller JA (2018) Radiologic aspects of the diagnosis of pulmonary embolism in pregnancy. *Clin Obstet Gynecol* 61:219–227
32. Perisinakis K, Seimenis I, Tzedakis A, Damilakis J (2014) Perfusion scintigraphy versus 256-slice CT angiography in pregnant patients suspected of pulmonary embolism: comparison of radiation risks. *J Nucl Med* 55:1273–1280
33. Papadakis GZ, Karantanis AH, Perisinakis K (2017) Pulmonary embolism diagnostics of pregnant patients: what is the recommended clinical pathway considering the clinical value and associated radiation risks of available imaging tests? *Phys Med* 43:178–185
34. Goodacre S, Nelson-Piercy C, Hunt B, Chan WS (2015) When should we use diagnostic imaging to investigate for pulmonary embolism in pregnant and postpartum women? *Emerg Med J* 32:78–82
35. Tromeur C, van der Pol LM, Klok FA, Couturaud F, Huisman MV (2017) Pitfalls in the diagnostic management of pulmonary embolism in pregnancy. *Thromb Res* 151:S86–S91
36. Committee on Obstetric Practice (2017) Committee opinion No. 723: guidelines for diagnostic imaging during pregnancy and lactation. *Obstet Gynecol* 130:e210–e216
37. Jordan EJ, Godelman A, Levsky JM, Zalta B, Haramati LB (2015) CT pulmonary angiography in pregnant and postpartum women: low yield, high dose. *Clin Imaging* 39:251–253

Publisher's note Springer Nature remains neutral with regard to jurisdictional claims in published maps and institutional affiliations.