



UNIL | Université de Lausanne

Unicentre

CH-1015 Lausanne

<http://serval.unil.ch>

---

Year : 2023

## Early identification of bleeding in trauma patients: external validation of traumatic bleeding scores in the Swiss Trauma Registry

Costa Alan

Costa Alan, 2023, Early identification of bleeding in trauma patients: external validation of traumatic bleeding scores in the Swiss Trauma Registry

Originally published at : Thesis, University of Lausanne

Posted at the University of Lausanne Open Archive <http://serval.unil.ch>

Document URN : urn:nbn:ch:serval-BIB\_33BA835656B98

### **Droits d'auteur**

L'Université de Lausanne attire expressément l'attention des utilisateurs sur le fait que tous les documents publiés dans l'Archive SERVAL sont protégés par le droit d'auteur, conformément à la loi fédérale sur le droit d'auteur et les droits voisins (LDA). A ce titre, il est indispensable d'obtenir le consentement préalable de l'auteur et/ou de l'éditeur avant toute utilisation d'une oeuvre ou d'une partie d'une oeuvre ne relevant pas d'une utilisation à des fins personnelles au sens de la LDA (art. 19, al. 1 lettre a). A défaut, tout contrevenant s'expose aux sanctions prévues par cette loi. Nous déclinons toute responsabilité en la matière.

### **Copyright**

The University of Lausanne expressly draws the attention of users to the fact that all documents published in the SERVAL Archive are protected by copyright in accordance with federal law on copyright and similar rights (LDA). Accordingly it is indispensable to obtain prior consent from the author and/or publisher before any use of a work or part of a work for purposes other than personal use within the meaning of LDA (art. 19, para. 1 letter a). Failure to do so will expose offenders to the sanctions laid down by this law. We accept no liability in this respect.



UNIL | Université de Lausanne

Faculté de biologie  
et de médecine

---

**UNIVERSITE DE LAUSANNE - FACULTE DE BIOLOGIE ET DE MEDECINE**

Centre Hospitalier Universitaire Vaudois (CHUV)  
Service des Urgences du CHUV

---

**Early identification of bleeding in trauma patients: external validation of  
traumatic bleeding scores in the Swiss Trauma Registry**

THESE

préparée sous la direction du Professeur Pierre-Nicolas Carron  
avec la co-direction du Docteur François-Xavier Ageron

et présentée à la Faculté de biologie et de médecine de  
l'Université de Lausanne pour l'obtention du grade de

DOCTEUR EN MEDECINE

par

Alan COSTA

Médecin diplômé de la Confédération Suisse  
Originaire de Lausanne (Vaud)

Lausanne  
2023





UNIL | Université de Lausanne

Faculté de biologie  
et de médecine

---

**UNIVERSITE DE LAUSANNE - FACULTE DE BIOLOGIE ET DE MEDECINE**

Centre Hospitalier Universitaire Vaudois (CHUV)  
Service des Urgences du CHUV

---

**Early identification of bleeding in trauma patients: external validation of  
traumatic bleeding scores in the Swiss Trauma Registry**

THESE

préparée sous la direction du Professeur Pierre-Nicolas Carron  
avec la co-direction du Docteur François-Xavier Ageron

et présentée à la Faculté de biologie et de médecine de  
l'Université de Lausanne pour l'obtention du grade de

DOCTEUR EN MEDECINE

par

Alan COSTA

Médecin diplômé de la Confédération Suisse  
Originaire de Lausanne (Vaud)

Lausanne  
2023



UNIL | Université de Lausanne

Faculté de biologie  
et de médecine

Ecole Doctorale  
Doctorat en médecine

# Imprimatur

*Vu le rapport présenté par le jury d'examen, composé de*

**Directeur.trice de thèse**

Prof. **Pierre-Nicolas Carron**

**Co-Directeur.trice de thèse**

Dr **Francois-Xavier Ageron**

**Expert.e**

Dr **Tobias Zingg**

**Vice-Directeur de l'Ecole  
doctorale**

Prof. **John Prior**

*la Commission MD de l'Ecole doctorale autorise l'impression de la thèse de*


**Monsieur Alan Costa**

*intitulée*

***Early identification of bleeding in trauma patients: external  
validation of traumatic bleeding scores in the Swiss Trauma Registry***

*Lausanne, le 24 janvier 2023*

*pour Le Doyen  
de la Faculté de Biologie et de Médecine*

  
Monsieur le Professeur John Prior  
Vice-Directeur de l'Ecole doctorale

# Présentation de l'article

---

L'hémorragie traumatique est la principale cause de décès évitable dans la prise en charge du traumatisé sévère. L'identification précoce des patients à risque d'hémorragie, en préhospitalier, est essentielle pour l'initiation d'un traitement d'urgence et le triage du patient vers une structure médicale adaptée. Depuis de nombreuses années, plusieurs scores s'intéressent à l'identification de l'hémorragie traumatique en tentant de prédire la transfusion massive (TM). Comme le décès par hémorragie est rarement renseigné dans les différents registres, la TM est souvent utilisée comme un substitut du décès par hémorragie. Récemment, un score clinique, le BATT score a été développé avec comme objectif de prédire le décès par hémorragie. L'objectif de notre étude est d'évaluer les performances des principaux scores hémorragiques existants. Par ailleurs, la plupart des scores hémorragiques utilisent des valeurs de laboratoire et d'imagerie non disponibles sur site et rendent leur faisabilité discutable en milieu préhospitalier. Notre hypothèse d'étude est de démontrer que prédire la TM est moins performante pour l'identification du risque hémorragique que la prédiction du décès par hémorragie à cause du risque de circularité et de fausse prédiction liés à la prédiction d'une pratique médicale.

Nous avons testé les performances (performance globale (Brier), discrimination (c-stat, sensibilité, spécificité) et calibration (calibration slope et courbe de calibration)) des principaux scores (TASH, ABC, SI, BATT) s'intéressant à l'hémorragie traumatique en utilisant les données du registre suisse des traumatisés sévères de Suisse (STR) de 2015 à 2019. Nous avons testé ces différents scores sur la prédiction de la TM définie comme l'administration de  $\geq 3$  concentrés érythrocytaires (CE) dans la première heure ou  $\geq 10$  CE dans les premières 24 heures. Nous nous sommes également intéressés à la prédiction du décès précoce définie comme la mortalité dans les premières 24 heures.

Notre étude met en évidence que seul le BATT score permet de prédire de façon précise le risque de décès précoce en préhospitalier avec l'utilisation de variables simples disponibles en préhospitalier. Les sensibilités des scores prédisant la transfusion massive (ABC, TASH, SI) sont trop faibles pour un triage approprié en milieu préhospitalier. Ces scores sont utiles uniquement pour discriminer les patients à très haut risque vital et dont le saignement est souvent cliniquement évident. Nous avons démontré dans notre étude que la prédiction de la TM ne peut pas être utilisé comme un substitut du décès hémorragique. Cet outcome (TM) n'est pas centré sur le patient et il est sujet aux changements de pratique évoluant au cours du temps et ne devrait pas être utilisé pour stratifier le risque d'hémorragie. Seul le BATT score est capable de prédire de façon précise le risque de décès précoce avec d'excellentes performances, un faible undertriage et peut être utilisé en préhospitalier dans la prise de décision. Il permet également de stratifier le risque hémorragique vital sur plusieurs niveaux (faible, intermédiaire et haut risque). L'identification précoce d'un saignement non-évident à risque intermédiaire permet d'initier un traitement précocement dans l'optique de prévenir le décès hémorragique.

Cette étude est la première étude remettant en question les différents scores préexistants dans la prédiction de l'hémorragie à risque vital. Elle met en lumière que le choix de prédire la transfusion massive est soumis à un important biais de survie, de fausse prédiction et de circularité.



RESEARCH

Open Access



# Early identification of bleeding in trauma patients: external validation of traumatic bleeding scores in the Swiss Trauma Registry

Alan Costa<sup>1\*</sup>, Pierre-Nicolas Carron<sup>1</sup>, Tobias Zingg<sup>2,4</sup>, Ian Roberts<sup>3</sup>, François-Xavier Ageron<sup>1</sup> for the Swiss Trauma Registry<sup>4</sup>

## Abstract

**Background:** Early identification of bleeding at the scene of an injury is important for triage and timely treatment of injured patients and transport to an appropriate facility. The aim of the study is to compare the performance of different bleeding scores.

**Methods:** We examined data from the Swiss Trauma Registry for the years 2015–2019. The Swiss Trauma Registry includes patients with major trauma (injury severity score (ISS)  $\geq 16$  and/or abbreviated injury scale (AIS) head  $\geq 3$ ) admitted to any level-one trauma centre in Switzerland. We evaluated ABC, TASH and Shock index (SI) scores, used to predict massive transfusion (MT) and the BATT score and used to predict death from bleeding. We evaluated the scores when used prehospital and in-hospital in terms of discrimination (C-Statistic) and calibration (calibration slope). The outcomes were early death within 24 h and the receipt of massive transfusion ( $\geq 10$  Red Blood cells (RBC) units in the first 24 h or  $\geq 3$  RBC units in the first hour).

**Results:** We examined data from 13,222 major trauma patients. There were 1,533 (12%) deaths from any cause, 530 (4%) early deaths within 24 h, and 523 (4%) patients who received a MT ( $\geq 3$  RBC within the first hour). In the prehospital setting, the BATT score had the highest discrimination for early death (C-statistic: 0.86, 95% CI 0.84–0.87) compared to the ABC score (0.63, 95% CI 0.60–0.65) and SI (0.53, 95% CI 0.50–0.56),  $P < 0.001$ . At hospital admission, the TASH score had the highest discrimination for MT (0.80, 95% CI 0.78–0.82). The positive likelihood ratio for early death were superior to 5 for BATT, ABC and TASH. The negative likelihood ratio for early death was below 0.1 only for the BATT score.

**Conclusions:** The BATT score accurately estimates the risk of early death with excellent performance, low undertriage, and can be used for prehospital treatment decision-making. Scores predicting MT presented a high undertriage rate. The outcome MT seems not appropriate to stratify the risk of life-threatening bleeding.

*Trial registration:* Clinicaltrials.gov, [NCT04561050](https://clinicaltrials.gov/ct2/show/study/NCT04561050). Registered 15 September 2020.

**Keywords:** Haemorrhage, Trauma, Massive transfusion, Death from bleeding, Score, Prognostic model

## Introduction

Trauma is a leading cause of death worldwide [1], and bleeding is one of the most preventable causes of traumatic death [2–5]. Early identification of bleeding at the scene of injury is important for triage and timely treatment of injured patients, for ensuring that patients are

\*Correspondence: alan.costa@chuv.ch

<sup>1</sup> Department of Emergency Medicine, Lausanne University Hospital, University of Lausanne, Rue du Bugnon 46, 1011 Lausanne, Switzerland  
Full list of author information is available at the end of the article



© The Author(s) 2022. **Open Access** This article is licensed under a Creative Commons Attribution 4.0 International License, which permits use, sharing, adaptation, distribution and reproduction in any medium or format, as long as you give appropriate credit to the original author(s) and the source, provide a link to the Creative Commons licence, and indicate if changes were made. The images or other third party material in this article are included in the article's Creative Commons licence, unless indicated otherwise in a credit line to the material. If material is not included in the article's Creative Commons licence and your intended use is not permitted by statutory regulation or exceeds the permitted use, you will need to obtain permission directly from the copyright holder. To view a copy of this licence, visit <http://creativecommons.org/licenses/by/4.0/>. The Creative Commons Public Domain Dedication waiver (<http://creativecommons.org/publicdomain/zero/1.0/>) applies to the data made available in this article, unless otherwise stated in a credit line to the data.



taken to the most appropriate facility and for trauma team activation [6].

Accurate prehospital prediction of the risk of life-threatening bleeding and the need for blood transfusion could improve patient outcome. Many trauma scores predict death from any cause after injury but far fewer predict bleeding related outcomes. Most of those predict surrogates of bleeding such as massive transfusion (MT) or the use of specific interventions for haemorrhage [7, 8].

MT is defined as administration of  $\geq 10$  units of red cells in the first 24 h after injury or  $\geq 3$  units in the first hour after injury [6–13]. The most popular trauma scores used to assess traumatic bleeding are the TASH [14, 15] and ABC score [16, 17]. Both predict MT as a surrogate of risk of death from bleeding and include clinical parameters as well as imaging and laboratory values. Because they involve imaging and laboratory testing these scores cannot be readily assessed at the scene. Shock index (SI) [18] has recently attracted attention because it can be used easily at the scene of the injury [19].

The BATT score is a new prognostic model that can be used in the pre-hospital setting to predict death from bleeding. The score was developed in a large international cohort [20] of trauma patients and externally validated using data from England and Wales [21].

We used data from the Swiss Trauma Registry to externally validate existing prognostic scores for traumatic bleeding when used prehospital and after hospital admission. We compared score performances in terms of overall performance, discrimination and calibration [22].

## Methodology

We compared the performance of different bleeding scores using data from the Swiss Trauma Registry (STR) from January 1, 2015, to December 31, 2019. The STR includes patients with major trauma (injury severity score (ISS)  $\geq 16$  and/or abbreviated injury scale (AIS) head  $\geq 3$ ) admitted to any of twelve level-one trauma centres in Switzerland. We excluded patients with isolated burns (including electric shock) or if the burn was the first injury, patients arriving in hospital without sign of life where no diagnostic or therapeutic measures had been initiated, patients with choking or hanging without any other injury, and victims of drowning.

### Calculation of bleeding scores

We collected a set of demographic data, first prehospital and in-hospital physiological variables (Heart Rate [HR], systolic blood pressure [SBP], respiratory rate [RR], peripheral capillary oxygen saturation [SpO<sub>2</sub>], Glasgow coma scale [GCS]), first measures of in-hospital biochemical values (haemoglobin [Hb], base excess [BE]), first-read imaging (Focused Assessment with Sonography

for Trauma [FAST]) and blood transfusion records (Type of Blood product, volume and time). We evaluated the most widely used scores for predicting MT (ABC, TASH and SI) and a score that predicts death from bleeding (BATT).

*Assessment of Blood Consumption* (ABC) includes penetrating trauma, SBP, HR and FAST. *Trauma-Associated Severe Haemorrhage* (TASH) includes sex, HR, SBP, Hb, BE, intra-abdominal fluid and complex fracture of the pelvis and/or long bone. *Shock Index* (SI) is defined by the ratio of HR to SBP. *Bleeding Audit for Trauma & Triage* (BATT) includes age, mechanism of trauma (penetrating/high energy), SBP, HR, GCS, RR or SpO<sub>2</sub>. Details about development and validation of each score are summarized in supplement 1. Others variables collected followed the Utstein-style for major trauma template [23] and regularly cross-checked for external validity and completeness by the register.

### Outcome measures

We assessed the accuracy of the scores to predict two bleeding-related outcomes: (1) death within 24 h of injury and (2) the receipt of a massive transfusion. Because 'death from bleeding' was not routinely recorded in the trauma registry, we used death within 24 h of injury, since studies have shown that most bleeding deaths are on the day of the injury. Two studies, one from North America and one based on two large European trauma registries (UK and Germany), show that most deaths from bleeding occur within 24 h of injury, with a peak around 6 h after admission. Head injury deaths occur later, around 72 h after injury [24, 25]. Death is an outcome that matters to patients and is accurately measured. Following an NIH consensus conference, it was recommended that early death can be used as a primary outcome measure in clinical trials in haemorrhage control [26]. We also performed a sensitivity analysis with very early death (death within 12 h of injury). We used two definitions of massive transfusion: receipt of  $\geq 10$  RBC units in the first 24 h and receipt of  $\geq 3$  RBC units within the first hour. Although the first definition ( $\geq 10$  RBC units) is often used in the trauma literature, the second definition is believed by some authors to be more accurate and less vulnerable to survival bias [13]. Because most deaths from bleeding are on the day of the injury, with many deaths in the first few hours after injury, some patients with severe bleeding do not survive long enough to receive  $\geq 10$  RBC units. This definition of massive bleeding will therefore fail to identify many patients with severe bleeding [11]. A second weakness of massive transfusion as an outcome is that it is less patient centred.

Massive transfusion is a medical intervention and not a biological effect of severe bleeding.

### Statistical analysis

The statistical analysis plan for the pre-specified analysis is registered at [www.clinicaltrials.gov](http://www.clinicaltrials.gov): NCT04561050. The STR has authorized us to access and process the registry data (ID-project: STR-ID 8) and granted us with the permission to publish the manuscript in accordance with the STR publication guidelines. Descriptive statistics included frequencies, 95% confidence interval (CI) for categorical variables and either the mean (SD) or median (Interquartile range [IQR]) for continuous variables, according to data distribution. We compared the overall performance with the Brier score, discrimination and calibration of the different scores for the prediction of MT and early death at scene and at hospital admission. The Brier Scores for the ABC score and SI were not calculated as they are not able to predict the probability of an outcome. For discrimination, we estimated the sensitivity, specificity, positive and negative likelihood ratio for the cut-off point of each score. We plotted the receiving operating characteristic (ROC) curve and estimated the area under the ROC curve (AUROC) that corresponds to the concordance statistic (C-Statistic). Definitions of the statistical terms and indicators are shown in supplement 2. For the calibration, we estimated calibration in the large, the ratio of the predicted and observed number of events (P/O). We plotted the observed and predicted probabilities of MT for the TASH score and haemorrhagic death for the BATT by decile of the score and with local regression based on LOESS algorithm [22]. The calibration of the ABC score and SI could not be assessed as they are not able to predict a probability of MT.

### Grey-zone approach

Because no score can perfectly differentiate trauma patients with severe bleeding (who might die or need massive transfusion) from those without severe bleeding (who will not die and not need massive transfusion), we used a grey-zone approach that identifies a middle 'inconclusive range' [27]. To set the upper limit of the inconclusive range, we used a score with high (90%) specificity. Patients with scores above this value have a very high risk of severe bleeding and there would be few patients without severe bleeding. Such a high score might be appropriate for deciding who should get an expensive intervention that although effective, might also cause serious side effects. To set the lower limit of the inconclusive range, we use a score with a high sensitivity. The American College of Surgeons recommends a score that gives 95% sensitivity so that only 5% of severe bleeding cases are missed, although up to 50% of patients without

severe bleeding may be included [28]. Such a score might be used when deciding who should get a low-cost intervention with an excellent safety profile. Patients with scores between the upper and lower limits are in the 'grey zone' where the discriminatory performance of the scores is insufficient to determine whether or not the patient has severe bleeding.

### Missing data

Because there were missing values for some predictors, we used multiple imputation by chained equations, with 20 imputed datasets, to impute missing values for sex, age, SBP, RR, HR, GCS, Hb, BE, RBC and type of injury (penetrating/blunt).

All analyses were performed using STATA software (version 16.0; Stata Corp, College Station, TX, USA).

### Results

We examined data from 13,222 trauma patients. Their characteristics are shown in Table 1. There were 1,533 (11.6%) deaths from any cause, 530 (4.0%) early deaths, 128 (1.0%) patients received 10 RBC within the first 24 h and 523 (4.0%) patients received 3 RBC within the first hour. The mean ISS of patients who received a MT was 32 [SD 13] compared with 21 [SD 10] for those who did not. Of patients who received a MT, 30% died compared with 11% (95% CI 11–13) of those who did not.

### Performance of bleeding scores

Table 2 shows the performance of bleeding scores calculated pre-hospital and in-hospital. The Brier score for BATT was 0.036 both pre-hospital and in-hospital. The Brier score for the TASH score at hospital admission was 0.060. In the prehospital setting, the BATT score had a higher discrimination for early death than ABC and SI, respectively C-statistic: 0.86, 95% CI (0.84–0.87); 0.63, 95% CI (0.60–0.65); 0.53, 95% CI (0.50–0.56);  $P < 0.001$ . The BATT score had the highest discrimination for MT in the prehospital setting (C-statistic: 0.75, 95% CI 0.73–0.78) followed by the Shock Index (C-statistic: 0.71, 95% CI 0.68–0.88) and the ABC score (C-statistic: 0.66, 95% CI 0.64–0.69),  $P < 0.01$ . At hospital admission, the BATT score had the highest discrimination for early death (C-statistic: 0.87, 95% CI 0.86–0.88). The TASH score had the highest discrimination for MT (C-statistic: 0.80, 95% CI 0.78–0.82). Figure 1 shows ROC curves for MT and early death. We presented in supplement 3, ROC curves for very early death (within 12 h) as sensitivity analysis for death from bleeding.

The prehospital BATT score  $\geq 3$  presented a sensitivity of 95%, a specificity of 50% and a LR+ of 0.09 for early death (Table 3). The sensitivity for early death prediction was low for all thresholds of the ABC score, the TASH

**Table 1** Characteristics of injured patients

	Missing N (%)	All patients (N = 13,222) N (%)	< 3 RBC units/1 h (N = 12,699) N (%)	≥ 3 RBC units/1 h (MT) (N = 523) N (%)
Age, mean (SD)	0	58 (22)	59 (21)	52 (22)
Male	0	9030 (68)	8677 (68)	353 (68)
Circumstances	156 (1)			
Traffic accident		3914 (30)	3707 (30)	210 (41)
Falls		7143 (55)	6933 (55)	210 (41)
Gunshots and Stabbings		233 (2)	198 (2)	36 (7)
Mechanism				
Penetrating	16 (0.12)	871 (6)	774 (6)	97 (19)
High energy	146 (1)	7397 (57)	7031 (56)	366 (71)
Injury Severity Score (ISS)				
Mean (SD)	6 (0.04)	22 (10)	21 (10)	32 (13)
9–15		3145 (24)	3110 (25)	35 (7)
16–24		5252 (40)	5134 (40)	118 (23)
25–34		3721 (28)	3536 (28)	185 (35)
> 35		1098 (8)	913 (7)	185 (35)
AIS head ≥ 3	0	8959 (68)	8675 (68)	284 (54)
Prehospital SBP, Mean (SD)	4412 (33)	135 (31)	136 (31)	116 (37)
< 90 mmHg		497 (6)	410 (5)	87 (22)
Prehospital HR, Mean (SD)	4172 (31)	86 (22)	86 (21)	97 (31)
Prehospital RR, Mean (SD)	9090 (69)	18 (7)	18 (7)	18 (9)
Prehospital SpO <sub>2</sub> , Mean (SD)	5486 (41)	95 (7)	95 (6)	91 (13)
< 90%		955 (12)	845 (11)	110 (29)
Prehospital GCS category	3798 (29)			
3–8		1841 (20)	1654 (18)	187 (43)
9–12		1090 (11)	1044 (12)	46 (10)
13–15		6486 (69)	6279 (70)	207 (47)
Hospital mortality	8 (0.06)			
All cause of death at 28 days		1533 (11.6)	1376 (10.8)	157 (30.0)
Early death within 24 h		530 (4.0)	448 (3.5)	82 (15.7)

score and the SI. ABC score  $\geq 2$  showed a sensitivity of 10%, which means that 90% of injured dead patients had an ABC score  $< 2$  (Table 3). In the prehospital setting, a BATT score  $\geq 8$ , SI  $> 0.9$  and ABC score  $\geq 2$  had a specificity of 90% or more for MT and early death (Table 3). At hospital admission, the TASH score  $\geq 12$  had a high specificity for MT prediction (98%) but a low sensitivity (27%). A prehospital BATT score  $\geq 3$  showed an undertriage of 5% and an overtriage of 50% for early death (Table 3). Figure 2 summarizes the grey-zone approach. All scores achieved a specificity of 90% for the upper limit. Only the BATT score provides a short grey zone with 5% of undertriage and 50% of overtriage for the lower limit.

For the BATT score, the calibration curve showed slight over-prediction in low-risk patients and

under-prediction in intermediate and high-risk patients. For the TASH score at hospital admission, the calibration curve showed over-prediction of MT (Supplement 4).

## Discussion

### Main findings

Only the BATT score accurately predicts the risk of early death in the prehospital setting. The sensitivities of scores predicting MT (ABC, TASH, SI) are low. Their negative likelihood ratio for rule out are too high and make them not suitable for the early identification of life-threatening bleeding. All scores accurately predict MT with a moderate positive likelihood ratio for rule in.

**Table 2** Performance of bleeding scores

	Overall Brier score	Discrimination C-statistic (95% CI)			Calibration				
		For early death (within 24 h)	For massive transfusion (3 RBC/1 h)	For massive transfusion (10 RBC/24 h)	Outcome observed % (95% CI) <sup>a</sup>	Outcome predicted % (95% CI) <sup>a</sup>	P value	Calibration intercept (95% CI)	Calibration slope (95% CI)
Prehospital									
BATT score	0.036	0.86 (0.84–0.87)*	0.75 (0.73–0.78)*	0.87 (0.84–0.90)	4.0 (3.6–4.3)	2.1 (2.0–2.2)	< 0.001	0.008 (0.005–0.012)	1.48 (1.40–1.56)
Shock Index <sup>b</sup>	–	0.53 (0.50–0.56)	0.71 (0.68–0.73)	0.84 (0.80–0.88)	–	–	–	–	–
ABC score <sup>b,c</sup>	–	0.63 (0.60–0.65)	0.66 (0.64–0.69)	0.82 (0.77–0.86)	–	–	–	–	–
TASH score <sup>d</sup>	–	–	–	–	–	–	–	–	–
In-Hospital									
BATT score	0.034	0.87 (0.86–0.88)*	0.77 (0.75–0.79)	0.89 (0.86–0.91)	4.0 (3.6–4.3)	2.7 (2.6–2.8)	< 0.001	0.005 (0.001–0.008)	1.31 (1.24–1.37)
Shock Index <sup>b</sup>	–	0.61 (0.58–0.64)	0.74 (0.72–0.77)	0.89 (0.86–0.92)	–	–	–	–	–
ABC score <sup>b</sup>	–	0.66 (0.63–0.68)	0.70 (0.67–0.72)	0.84 (0.80–0.87)	–	–	–	–	–
TASH score	0.060	0.74 (0.72–0.76)	0.80 (0.78–0.82)**	0.94 (0.92–0.95)*	4.0 (3.6–4.3)	6.1 (5.8–6.5)	< 0.001	0.011 (0.008–0.015)	0.46 (0.44–0.48)

\* P < 0.001 (compare to the highest score below); \*\*P < 0.01

<sup>a</sup> BATT score predicted death from bleeding compared to early death within 24 h; TASH score predicted massive transfusion (≥ 10 RBC/24 h) compared to ≥ 3 RBC within the first hour

<sup>b</sup> The Brier score, calibration in the large, calibration intercept and calibration slope cannot be estimated as SI and ABC score does not estimate a probability of massive transfusion, early death, or death from bleeding

<sup>c</sup> ABC score was estimated without ultrasonography (FAST) as ultrasonography is not available in routine in the prehospital setting

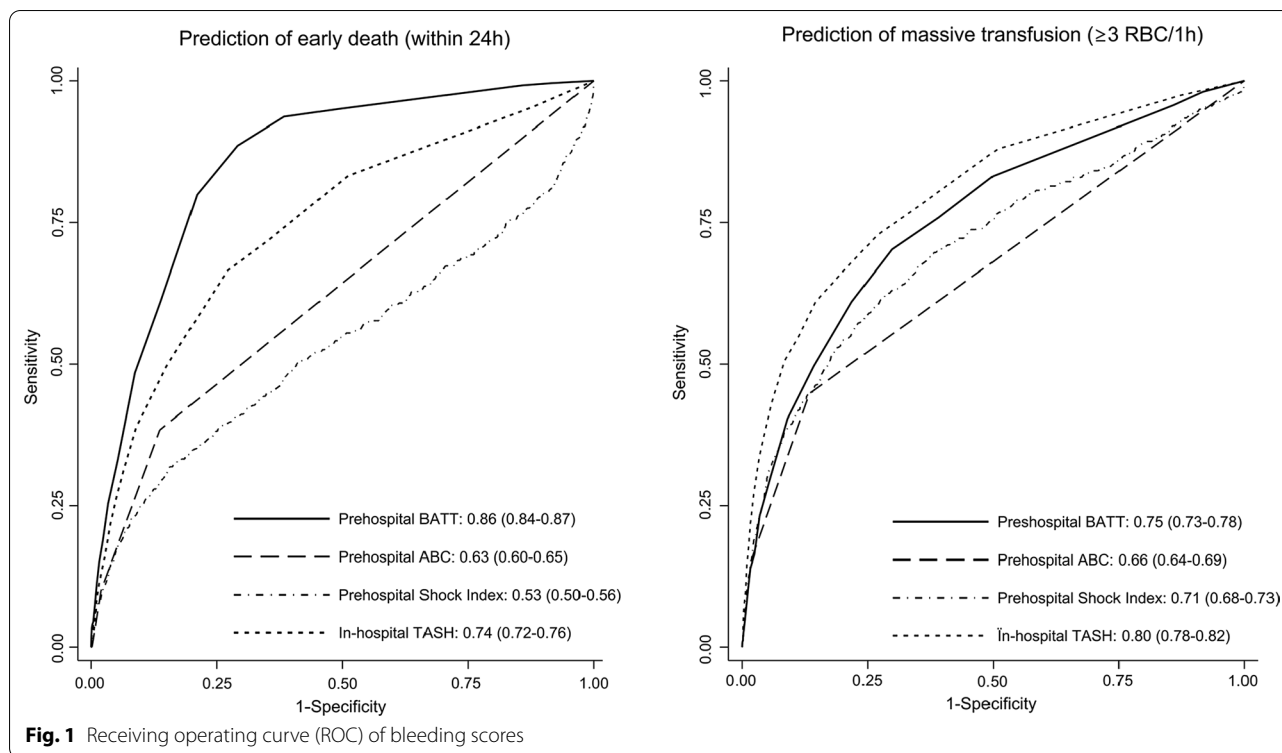
<sup>d</sup> TASH score in the prehospital setting is not feasible as biological assay and imaging are not available

**Strengths and limitations**

Our study has important strengths. We validated the scores in data from a large national trauma registry which includes trauma patients with a wide range of bleeding severity. This provided a heterogenous case-mix that allowed for accurate assessment of discrimination [29]. The large number of patients in this study increased the precision of the results. Finally, we used first parameters recorded by paramedics at trauma scene and at hospital admission when the decision of MT had to be made. We used rigorous methods, assessing not only discrimination but all performance criteria, including global performance, discrimination, and calibration. We determined sensitivity and specificity for each threshold and considered the risks of undertriage or overtriage with a grey-zone approach.

Our study also has limitations. Measurement error in predictor variables could affect discrimination and calibration. Random error arises for all predictors (BP, HR,

GCS, RR) and leads to reduced discrimination and calibration. Systematic errors arising from the use of monitoring devices are more likely to affect calibration [30]. Because the outcome ‘death from bleeding’ was not available in the STR database, we used early death within 24 h as a proxy [31], subject to misclassification bias due to other cause of death. Massive transfusion is also subject to misclassification due to information bias. Any outcome misclassification would be expected to decrease the C-statistic and reduce the model performance [32] and since the C-statistic was high and model performance was excellent, misclassification is unlikely to be an important weakness for early death. Because MT and some predictors were missing, we imputed these data. We assumed that data were missing at random. If not, complete case should perform better. We noticed a survival bias on the primary outcome. As some patients may not survive long enough to receive 10 RBC in the first 24 h, MT is subject to misclassification.



**Fig. 1** Receiving operating curve (ROC) of bleeding scores

**Comparison to other studies**

Our patient’s characteristics were similar to other European studies [15, 21]. To the best of our knowledge, the BATT score is the only score that predicts traumatic death from bleeding and could be easily applied at the trauma scene [21]. In our study, we found similar good discrimination to identify MT for TASH, ABC score and SI [14–18, 33, 34]. The MT rate was low and comparable to the lower limit reported in the literature [14–16, 21, 34]. For the TASH score, we observed a clear over-prediction of MT for all risk patients with 6.1% of predicted probability. In the literature, we observed a decrease of MT use over the last years. The German registry reported 14.1% of MT between 1993 and 2003 [14], 8.4% between 2004 and 2007 [15] and 1.7% in between 2015 to 2019 [35]. The decline in MT might be explained by changes in blood management practice in severe trauma. Moreover, early identification of acute trauma coagulopathy by thromboelastography might have decreased the use of blood products by using more coagulation factors than fresh-frozen plasma [36]. As MT is practice-dependent, we presumed that MT is not a reliable outcome to assess the risk of bleeding.

**Clinical implication**

Early identification of patients at risk of life-threatening bleeding is critical for the administration of life-saving interventions and for transport to the appropriate hospital. Scores using laboratory assays and imaging such as TASH are not useful because they cannot be used pre-hospital. The sensitivity of the scores’ predicting MT is too low for an appropriate use for prehospital triage. The inconclusive zone is too large to stratify the risk of life-threatening bleeding. These scores are able to discriminate only some high-risk patients probably when the bleeding is clinically obvious. More than three quarters of patients who died within 24 h were not identified by the SI and ABC scores. Moreover, predicting the receipt of particular types of medical care runs the risk of circularity with a high-risk of false prediction. The outcome of MT seems not appropriate as the performance of prehospital MT scores to predict early death is weak and could vary over the time. MT is not a patient centred outcome, is subject to practice changes and should not be used to stratify the risk of life-threatening bleeding.

The BATT score accurately predicts early death and facilitates the identification of patients with a low,

**Table 3** Discrimination performance by scores threshold

	Sensibility (%)	Undertriage (%)	Specificity (%)	Overtriage (%)	Likelihood ratio +	Likelihood ratio –
Early death (within 24 h)						
Prehospital BATT score						
≥ 3	95.3	4.7	50.5	49.5	1.9	0.09
≥ 8	50.4	49.6	91.1	8.9	5.7	0.54
Prehospital ABC score						
≥ 1	40.7	59.3	86.2	13.8	2.9	0.69
≥ 2	10.0	90.0	98.0	2.0	5.0	0.92
Prehospital Shock Index						
≥ 0.7	42.1		69.2		1.4	0.84
≥ 0.9	25.0	75.0	89.9	10.1	2.5	0.83
In-hospital TASH score						
≥ 1	95.5	4.5	12.4	87.6	1.1	0.37
≥ 8	40.3	59.7	90.1	9.9	4.5	0.66
≥ 12	17.0	83.0	97.2	2.8	6.1	0.85
Massive transfusion (3 RBC/1 h)						
Prehospital BATT score						
≥ 3	83.4	16.6	49.9	50.1	1.7	0.33
≥ 8	40.9	59.1	90.7	9.3	4.4	0.65
Prehospital ABC score						
≥ 1	45.3	54.7	86.3	12.7	3.3	0.63
≥ 2	15.1	84.9	98.2	7.8	8.4	0.86
Prehospital Shock Index						
≥ 0.7	63.1		70.0		2.1	0.53
≥ 0.9	39.4		90.5		4.1	0.67
In-hospital TASH score						
≥ 1	97.5	2.5	12.5	87.5	1.1	0.20
≥ 8	50.9	49.1	91.4	8.6	5.9	0.54
≥ 12	27.3	72.7	97.7	2.3	11.6	0.74

Undertriage = 1 - Sensibility; Overtriage = 1 - specificity

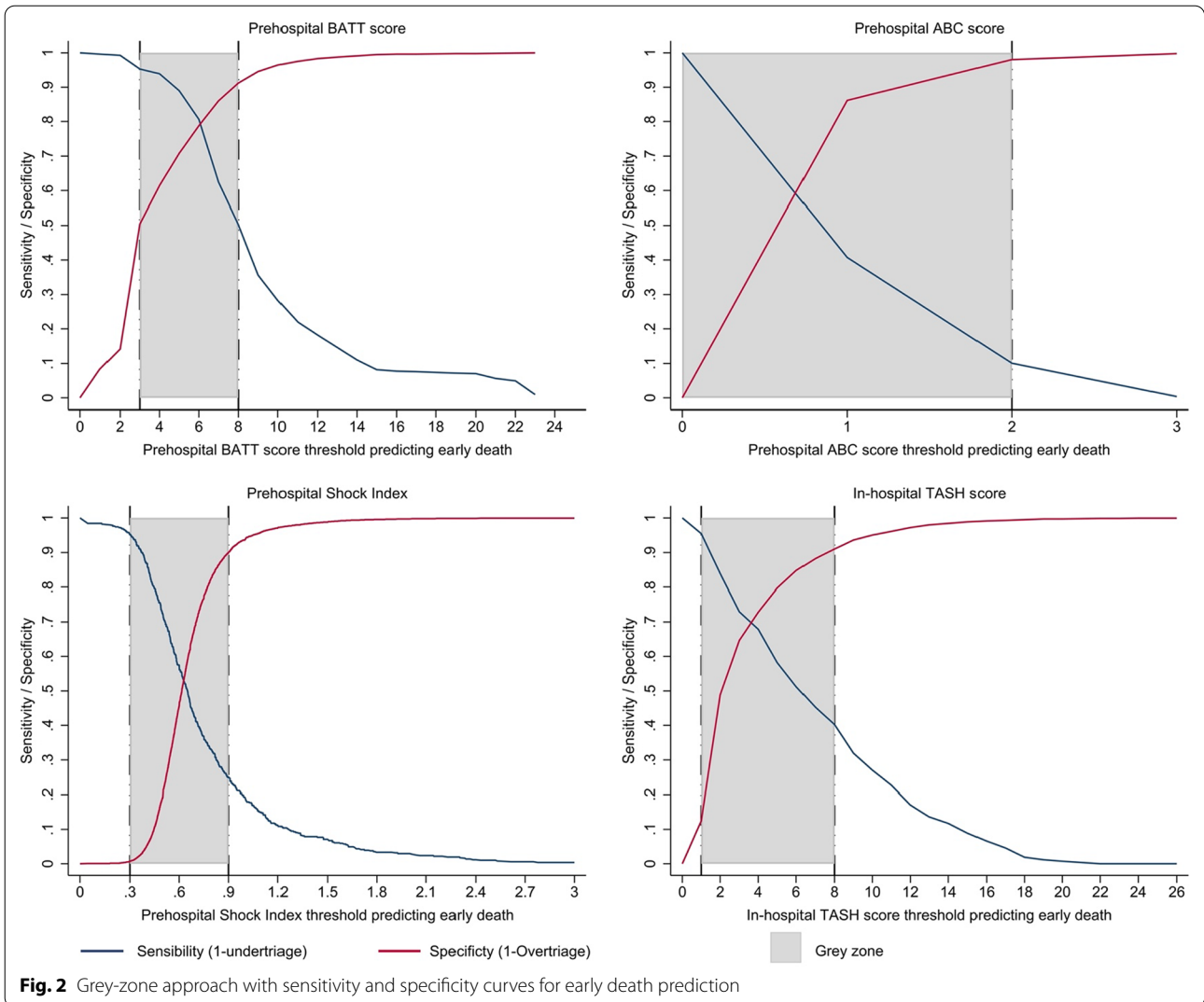
intermediate, and high-risk of life-threatening bleeding. Because it can be used in the prehospital setting it is ideal for early decision-making. Early identification of non-obvious bleeding in the intermediate risk patient represents the most important intervention to avoid preventable death.

A BATT score  $\geq 3$  includes patients with an intermediate and high risk and has an undertriage of 5% and an overtriage of 50%. This overtriage rate considered acceptable by the American College of Surgeon [28] and so a BATT score  $\geq 3$  seems an appropriate cut off for triage. The high-risk BATT score ( $\geq 8$ ) with less than 10% of overtriage may be useful for prehospital activation of MT protocol. There is recent evidence that many patients that could benefit from tranexamic acid

treatment are not treated, in particular older women [37]. The use of the BATT score by paramedics could rationalize the use of tranexamic acid and help tackle inequalities (age and gender) [38].

### Conclusion

The BATT score accurately estimates the risk of early death with excellent performance, low undertriage and can be used for prehospital treatment decision-making. Although the TASH score presented good performance in-hospital, it is not suitable in prehospital. Scores predicting MT presented high undertriage. The outcome MT seems not appropriate to stratify the risk of life-threatening bleeding.



### Supplementary Information

The online version contains supplementary material available at <https://doi.org/10.1186/s13054-022-04178-8>.

**Additional file 1.** 1. Summary of development and validation method of each trauma bleeding score. 2. Definition of statistics and performance indicators. 3. Receiving Operating Curve (ROC) of bleeding scores for very early death within 12 h. 4. Calibration Curves for external validation of BATT and TASH score.

#### Author contributions

AC, FXA and PNC were involved in study design. AC and FXA analysed the data. AC, FXA and IR drafted the manuscript. PNC, TB and IR reviewed and contributed to the final manuscript. All authors read approved the final manuscript.

#### Funding

None.

#### Availability of data and materials

The datasets used during the current study belongs to the Swiss Trauma Registry (STR) and are available from the STR on reasonable request.

#### Declarations

##### Ethics approval and consent to participate

As mandatory by the Swiss law, trauma registry is authorized by the Human Research Act (HRA). Our study was approved by The Regional Institutional Ethics Committee of the Swiss Trauma Registry (review board 331/13). Due to the observational non-interventional aspect of the study based on a multicentric anonymized register, informed consent was waived.

##### Consent for publication

Not applicable.

##### Competing interests

The authors declare that they have no competing interests.

**Author details**

<sup>1</sup>Department of Emergency Medicine, Lausanne University Hospital, University of Lausanne, Rue du Bugnon 46, 1011 Lausanne, Switzerland. <sup>2</sup>Department of Surgery, Lausanne University Hospital, University of Lausanne, Lausanne, Switzerland. <sup>3</sup>Clinical Trials Unit, London School of Hygiene and Tropical Medicine, London WC1E 7HT, UK. <sup>4</sup>Swiss Trauma Board, Lausanne, Switzerland.

Received: 20 June 2022 Accepted: 21 September 2022

Published online: 28 September 2022

**References**

- Roth GA, Abate D, Abate KH, Abay SM, Abbafati C, Abbasi N, et al. Global, regional, and national age-sex-specific mortality for 282 causes of death in 195 countries and territories, 1980–2017: a systematic analysis for the Global Burden of Disease Study 2017. *The Lancet*. 2018;392(10159):1736–88.
- Kauvar DS, Lefering R, Wade CE. Impact of hemorrhage on trauma outcome: an overview of epidemiology, clinical presentations, and therapeutic considerations. *J Trauma*. 2006;60(6):9.
- Esposito TJ, Sanddal TL, Reynolds SA, Sanddal ND. Effect of a voluntary trauma system on preventable death and inappropriate care in a rural state. *J Trauma: Injury Infect Crit Care*. 2003;54(4):663–70.
- Kleber C, Giesecke MT, Tsokos M, Haas NP, Buschmann CT. Trauma-related Preventable Deaths in Berlin 2010: need to change prehospital management strategies and trauma management education. *World J Surg*. 2013;8.
- Sauaia A, Moore FA, Moore EE, Moser KS, Brennan R, Read RA, et al. Epidemiology of trauma deaths: a reassessment. *J Trauma: Injury Infect Crit Care*. 1995;38(2):185–93.
- Meyer DE, Vincent LE, Fox EE, O’Keeffe T, Inaba K, Bulger E, et al. Every minute counts: Time to delivery of initial massive transfusion cooler and its impact on mortality. *J Trauma Acute Care Surg*. 2017;83(1):19–24.
- Tran A, Matar M, Lampron J, Steyerberg E, Taljaard M, Vaillancourt C. Early identification of patients requiring massive transfusion, embolization or hemostatic surgery for traumatic hemorrhage: A systematic review and meta-analysis. *J Trauma Acute Care Surg*. 2018;84(3):505–16.
- Lynn M, Jeroukhimov I, Klein Y, Martinowitz U. Updates in the management of severe coagulopathy in trauma patients. *Intensive Care Med*. 2002;28:s241–7.
- Shafi S, Kauder DR. Fluid resuscitation and blood replacement in patients with polytrauma *Clin Orthop Related Res*. 2004;422:37–42.
- Pommerening MJ, Goodman MD, Holcomb JB, Wade CE, Fox EE, del Junco DJ, et al. Clinical gestalt and the prediction of massive transfusion after trauma. *Injury*. 2015;46(5):807–13.
- McQuilten ZK, Flint AW, Green L, Sanderson B, Winears J, Wood EM. Epidemiology of massive transfusion—A common intervention in need of a definition. *Transfus Med Rev*. 2021;35(4):73–9.
- Savage SA, Zarzaur BL, Croce MA, Fabian TC. Redefining massive transfusion when every second counts. *J Trauma Acute Care Surg*. 2013;74(2):396–402.
- Savage SA, Sumislawski JJ, Zarzaur BL, Dutton WP, Croce MA, Fabian TC. The new metric to define large-volume hemorrhage: results of a prospective study of the critical administration threshold. *J Trauma Acute Care Surg*. 2015;78(2):224–30.
- Yücel N, Lefering R, Maegele M, Vorweg M, Tjardes T, Ruchholtz S, et al. Trauma Associated Severe Hemorrhage (TASH)-Score: probability of mass transfusion as surrogate for life threatening hemorrhage after multiple trauma. *J Trauma*. 2006;60(6):1228–36; discussion 1236–1237.
- Maegele M, Lefering R, Wafaisade A, Theodorou P, Wutzler S, Fischer P, et al. Revalidation and update of the TASH-Score: a scoring system to predict the probability for massive transfusion as a surrogate for life-threatening haemorrhage after severe injury: Score to predict massive transfusion after severe injury. *Vox Sang*. 2011;100(2):231–8.
- Nunez TC, Voskresensky IV, Dossett LA, Shinall R, Dutton WD, Cotton BA. Early prediction of massive transfusion in trauma: simple as ABC (Assessment of Blood Consumption)? *J Trauma: Injury Infect Crit Care*. 2009;66(2):346–52.
- Cotton BA, Dossett LA, Haut ER, Shafi S, Nunez TC, Au BK, et al. Multi-center validation of a simplified score to predict massive transfusion in trauma. *J Trauma*. 2010;69(1):7.
- Mutschler M, Nienaber U, Münzberg M, Wölfel C, Schoechl H, Paffrath T, et al. The Shock Index revisited – a fast guide to transfusion requirement? A retrospective analysis on 21,853 patients derived from the TraumaRegister DGUW. 2013;9.
- Allgöwer M, Burri C. Schockindex. *Dtsch med Wochenschr*. 1967;92(43):1947–50.
- Ageron FX, Gayet-Ageron A, Steyerberg E, Bouzat P, Roberts I. Prognostic model for traumatic death due to bleeding: cross-sectional international study. *BMJ Open*. 2019;9(5):e026823.
- Ageron FX, Coats TJ, Darioli V, Roberts I. Validation of the BATT score for prehospital risk stratification of traumatic haemorrhagic death: usefulness for tranexamic acid treatment criteria. *Scand J Trauma Resusc Emerg Med*. 2021;29(1):6.
- Steyerberg EW, Vickers AJ, Cook NR, Gonen M, Obuchowski N, et al. Assessing the performance of prediction models: a framework for traditional and novel measures. *Epidemiology*. 2010;21(1):128–38.
- Ringdal KG, Coats TJ, Lefering R, Di Bartolomeo S, Steen PA, Roise O, et al. The Utstein template for uniform reporting of data following major trauma: a joint revision by SCANTEM, TARN, DGU-TR and RITG. *Scand J Trauma Resusc Emerg Med*. 2008;16(1):7.
- Lefering R, Paffrath T, Bouamra O, Coats TJ, Woodford M, Jenks T, Wafaisade A, Nienaber U, Lecky F. Epidemiology of in-hospital trauma deaths. *Eur J Trauma Emerg Surg*. 2012;38(1):3–9. <https://doi.org/10.1007/s00068-011-0168-4>.
- Peng P, Coyle A, Newgard CD. Likelihood ratios for the emergency physician. *Acad Emerg Med*. 2018;25(8):958–65. <https://doi.org/10.1111/acem.13439>.
- Holcomb JB, Moore EE, Sperry JL, Jansen JO, Schreiber MA, del Junco DJ, et al. Evidence-based and clinically relevant outcomes for hemorrhage control trauma trials. *Ann Surg*. 2021;273(3):395–401.
- Coste J, Pouchot J. A grey zone for quantitative diagnostic and screening tests. *Int J Epidemiol*. 2003;32(2):304–13.
- Sasser SM, Hunt RC, Sullivent EE, Wald MM, Mitchko J, Jurkovich GJ, Henry MC, Salomone JP, Wang SC, Galli RL, Cooper A, Brown LH, Sattin RW; National Expert Panel on Field Triage, Centers for Disease Control and Prevention (CDC). Guidelines for field triage of injured patients. Recommendations of the National Expert Panel on Field Triage. *MMWR Recomm Rep*. 2009;1–35.
- Damen JAAG, Debray TPA, Pajouheshnia R, Reitsma JB, Scholten RJPM, Moons KGM, et al. Empirical evidence of the impact of study characteristics on the performance of prediction models: a meta-epidemiological study. *BMJ Open*. 2019;9(4):e026160.
- Rosella LC, Corey P, Stukel TA, Mustard C, Hux J, Manuel DG. The influence of measurement error on calibration, discrimination, and overall estimation of a risk prediction model. *Popul Health Metrics*. 2012;10(1):20.
- Brenner A, Arribas M, Cuzick J, Jairath V, Stanworth S, Ker K, et al. Outcome measures in clinical trials of treatments for acute severe haemorrhage. *Trials*. 2018;19(1):533.
- Jurek AM, Greenland S, Maldonado G, Church TR. Proper interpretation of non-differential misclassification effects: expectations vs observations. *Int J Epidemiol*. 2005;34(3):680–7.
- Pottecher J, Ageron FX, Fauché C, Chemla D, Noll E, Duranteau J, et al. Prehospital shock index and pulse pressure/heart rate ratio to predict massive transfusion after severe trauma: Retrospective analysis of a large regional trauma database. *J Trauma Acute Care Surg*. 2016;81(4):713–22.
- Schroll R, Swift D, Tatum D, Couch S, Heaney JB, Llado-Farrulla M, et al. Accuracy of shock index versus ABC score to predict need for massive transfusion in trauma patients. *Injury*. 2018;49(1):15–9.
- Imach S, Wafaisade A, Lefering R, Böhmer A, Schieren M, Suárez V, et al. The impact of prehospital tranexamic acid on mortality and transfusion requirements: match-pair analysis from the nationwide German TraumaRegister DGU®. *Crit Care*. 2021;25(1):277.
- Innerhofer P, Fries D, Mittermayr M, Innerhofer N, von Langen D, Hell T, et al. Reversal of trauma-induced coagulopathy using first-line coagulation factor concentrates or fresh frozen plasma (RETIC): a



single-centre, parallel-group, open-label, randomised trial. *Lancet Haematol.* 2017;4(6):e258–71.

37. Nutbeam T, Roberts I, Weekes L, Shakur-Still H, Brenner A, Ageron FX. Use of tranexamic acid in major trauma: a sex-disaggregated analysis of the Clinical Randomisation of an Antifibrinolytic in Significant Haemorrhage (CRASH-2 and CRASH-3) trials and UK trauma registry (Trauma and Audit Research Network) data. *Br J Anaesth.* 2022;S0007091222001842.
38. Cole E, Curry N, Davenport R. Sex discrimination after injury: is inequity in tranexamic acid administration just the tip of the iceberg? *Br J Anaesth.* 2022;129(2):144–7.
39. Vang M, Østberg M, Steinmetz J, Rasmussen LS. Shock index as a predictor for mortality in trauma patients: a systematic review and meta-analysis. *Eur J Trauma Emerg Surg.* 2022. <https://doi.org/10.1007/s00068-022-01932-z>.

### Publisher's Note

Springer Nature remains neutral with regard to jurisdictional claims in published maps and institutional affiliations.

**Ready to submit your research? Choose BMC and benefit from:**

- fast, convenient online submission
- thorough peer review by experienced researchers in your field
- rapid publication on acceptance
- support for research data, including large and complex data types
- gold Open Access which fosters wider collaboration and increased citations
- maximum visibility for your research: over 100M website views per year

**At BMC, research is always in progress.**

Learn more [biomedcentral.com/submissions](https://biomedcentral.com/submissions)

