

Published in final edited form as:

ISME J. 2018 October ; 12(10): 2363–2375. doi:10.1038/s41396-018-0178-x.

Eavesdropping and crosstalk between secreted quorum sensing peptide signals that regulate bacteriocin production in *Streptococcus pneumoniae*

Eric L. Miller^{#a,b}, Morten Kjos^{#c,d}, Monica I. Abrudan^{e,g}, Ian S. Roberts^{a,1}, Jan-Willem Veening^{c,f,1}, and Daniel E. Rozen^{b,1}

^aSchool of Biological Science, Faculty of Biology, Medicine, and Health, Manchester Academic Health Science Centre, University of Manchester, Manchester, M13 9PL, UK ^bInstitute of Biology Leiden, Leiden University, Leiden, 2333 BE, The Netherlands ^cMolecular Genetics Group, Groningen Biomolecular Sciences and Biotechnology Institute, Centre for Synthetic Biology, University of Groningen, Groningen, 9700 AE, The Netherlands ^dFaculty of Chemistry, Biotechnology and Food Science, Norwegian University of Life Sciences, N-1432 Ås, Norway ^eWellcome Trust Sanger Institute, Genome Campus, Cambridge, CB10 1SA, UK ^fDepartment of Fundamental Microbiology, Faculty of Biology and Medicine, University of Lausanne, Biophore Building, CH-1015 Lausanne, Switzerland ^gFaculty of Medicine, School of Public Health, Imperial College, London W2 1PG, United Kingdom

These authors contributed equally to this work.

Abstract

Quorum sensing (QS), where bacteria secrete and respond to chemical signals to coordinate population-wide behaviors, has revealed that bacteria are highly social. Here, we investigate how diversity in QS signals and receptors can modify social interactions controlled by the QS system regulating bacteriocin secretion in *Streptococcus pneumoniae*, encoded by the *blp* operon (bacteriocin-like peptide). Analysis of 4 096 pneumococcal genomes detected nine *blp* QS signals (BlpC) and five QS receptor groups (BlpH). Imperfect concordance between signals and receptors suggested widespread social interactions between cells, specifically eavesdropping (where cells respond to signals that they do not produce) and crosstalk (where cells produce signals that non-clones detect). This was confirmed *in vitro* by measuring the response of reporter strains containing six different *blp* QS receptors to cognate and non-cognate peptides. Assays between pneumococcal colonies grown adjacent to one another provided further evidence that crosstalk and eavesdropping occur at endogenous levels of signal secretion. Finally, simulations of QS strains producing bacteriocins revealed that eavesdropping can be evolutionarily beneficial even when the affinity for non-cognate signals is very weak. Our results highlight that social interactions can

Users may view, print, copy, and download text and data-mine the content in such documents, for the purposes of academic research, subject always to the full Conditions of use:http://www.nature.com/authors/editorial_policies/license.html#terms

¹Correspondence to: d.e.rozen@biology.leidenuniv.nl, Jan-Willem.Veening@unil.ch, i.s.roberts@manchester.ac.uk.

Conflict of Interest

The authors declare no conflict of interest.

mediate intraspecific competition among bacteria and reveal that competitive interactions can be modified by polymorphic QS systems.

Keywords

Streptococcus; quorum sensing; intra-species competition; signaling; eavesdropping; crosstalk

Subject Category

Evolutionary genetics

Introduction

Quorum sensing (QS) is a mechanism of intercellular communication that allows bacterial populations to coordinately regulate gene expression in response to changes in population density. QS is controlled by the secretion and detection of diffusible signaling molecules that, at threshold concentrations, lead to increased signal secretion and the induction of coupled downstream pathways (Miller and Bassler, 2001; Waters and Bassler, 2005). By this process, QS ensures that metabolically costly products are only produced when this would benefit the bacterial population, i.e. when they are at high concentrations (Waters and Bassler, 2005). QS systems are coordinated by the fact that cells simultaneously send and detect a specific signal (Bassler *et al.*, 1997; Redfield, 2002; Waters and Bassler, 2005), a characteristic that increases the likelihood that QS functions as a private message between clonemates that share evolutionary interests (Crespi, 2001; West *et al.*, 2006; Schluter *et al.*, 2016). However, although QS works as an effective means of gene regulation in the laboratory in single strain cultures, QS in nature may be less reliable because it is susceptible to signal eavesdropping (i.e. where a promiscuous QS receptor can detect a QS signal not produced by that genotype) and signal crosstalk (i.e. where a non-specific QS signal can activate QS receptors in genotypes that produce other QS signals) (Redfield, 2002; Atkinson and Williams, 2009). This variation in QS signals and QS signal detection is widespread in nature (Bouillaut *et al.*, 2008; Swem *et al.*, 2008; Ansaldi and Dubnau, 2004; Ji *et al.*, 1997) and distinct from well-studied cheater/cooperator dynamics (e.g. Jiricny *et al.* 2010; Strassmann & Queller 2011). For example, signal-blind bacteria that produce, but are incapable of responding to, QS signals can engage in signal crosstalk to manipulate the behavior of other cells, e.g. by inducing them to produce expensive public goods (Diggle *et al.*, 2007). Crosstalk and eavesdropping can occur even if all cells within a population are otherwise phenotypically wild-type if (i) QS signals and receptors are polymorphic and (ii) signals can bind and activate more than one receptor variant. Here we examine these issues using the polymorphic QS system regulating bacteriocin production in the Gram-positive opportunistic pathogen *Streptococcus pneumoniae*, where QS is integral for mediating intraspecific competition.

To initiate infection, *S. pneumoniae* must successfully colonize the nasopharynx and then persist during subsequent colonization attempts from other strains. Commensal carriage of *S. pneumoniae* is widespread, affecting up to 88% of children worldwide (Regev-Yochay *et*

al., 2004; Wyllie *et al.*, 2014), and between 5-52% of individuals are co-colonized with multiple strains (Wyllie *et al.*, 2014; Sauver *et al.*, 2000; García-Rodríguez and Fresnadillo Martínez, 2002; Brugger *et al.*, 2010). Interactions between different strains during colonization are common and dynamic, and the rate of clonal turnover — where one strain displaces another — occurs on a timescale of days to months (Meats *et al.*, 2003; Turner *et al.*, 2012). Among the factors thought to mediate intraspecific competition among pneumococcal strains are small anti-microbial peptides with narrow target ranges called bacteriocins (Dawid *et al.*, 2007), which are regulated by QS. The most diverse bacteriocins in *S. pneumoniae* are encoded by the *blp* (bacteriocin-like peptides) locus (Lux *et al.*, 2007; Dawid *et al.*, 2007). We recently showed that the number of possible combinations of bacteriocins and immunity genes at this locus can extend into the trillions, although only several hundred combinations are actually observed (Miller *et al.*, 2016). As with other Gram-positive peptide signals, the QS signal peptide (BlpC) regulating the *blp* operon is constitutively produced at low levels, but is auto-induced at high levels once a threshold concentration has been reached (Lux *et al.*, 2007). Secreted BlpC binds to the extracellular domain of the membrane-bound histidine kinase BlpH, and upon binding the kinase phosphorylates the response regulator BlpR (Fig 1b; De Saizieu *et al.* 2000; Reichmann & Hakenbeck 2000) which initiates production of the *blp* bacteriocin and immunity genes and increases production of the BlpC signal (De Saizieu *et al.*, 2000). *blpC* expression is also enhanced by the response regulator ComE during the induction of pneumococcal competence, which is regulated by the paralogous *com* QS signaling system (Kjos *et al.*, 2016). Both ABC transporters BlpAB (Håvarstein *et al.*, 1995) and ComAB (Kjos *et al.*, 2016; Wholey *et al.*, 2016) cleave the N-terminal, double-glycine leader sequence of BlpC before export of the mature peptide signal by the same transporters (Fig. 1b). Using QS to regulate secretion presumably ensures that Blp bacteriocins are only produced when there is a sufficiently high cell number to allow these anti-competitor toxins to reach effective concentrations.

Both the BlpC signal and its receptor, BlpH, are highly polymorphic (Miller *et al.*, 2016). What are the effects of this variation, and how does this diversity influence the competitive interactions between strains that are mediated by *blp* bacteriocins? One possibility is that each unique BlpC signal corresponds to a distinct BlpH receptor to which it specifically and exclusively binds. By this explanation, strains detect and respond only to their own signal to determine the threshold at which they induce the *blp* operon. Such exclusivity is found in the *S. pneumoniae* competence signaling system where the two dominant peptide signals, CSP1 and CSP2, only induce cells expressing the cognate receptor (Iannelli *et al.*, 2005). Similarly, there is near perfect concordance between the signal and receptor carried by any single genome, suggesting that tight coupling of these loci is crucial for the activation of competence (Miller *et al.*, 2017). An alternative possibility, considered in a recent experimental study (Pinchas *et al.*, 2015), is that BlpC peptides cross-react via crosstalk or eavesdropping with different BlpH receptors, thereby leading to a scenario where competing strains interact socially to induce the production of either immunity or bacteriocins at densities that would be insufficient for activation by auto-induction. Bacterial strains may benefit from this cross-reactivity if they are forewarned of the threats from others, allowing them to induce their own bacteriocins or immunity. Alternatively, eavesdropping may be

costly if strains with promiscuous receptors are induced to secrete bacteriocins at densities that are too low to provide sufficient benefits to offset the costs of their production. *S. pneumoniae* presents an ideal opportunity to study the evolution of QS systems beyond cheater/cooperator dynamics (Pollak *et al.*, 2016; Eldar, 2011; Son *et al.*, 2011) in an easily manipulated, highly relevant study system in which much is already known about signal/receptor dynamics (Pinchas *et al.*, 2015). Our results extend previous work by highlighting the extensive diversity in both Blp signals and receptors and by demonstrating how this diversity can influence *blp* operon regulation in both theory and *in vitro*.

Materials and Methods

Phylogenetic and Sequence Analysis

We analyzed *S. pneumoniae* genomes from eight publicly available sets, six of which contain strains that were randomly sampled from cases of disease or asymptomatic carriage: 3 017 genomes from refugees in Maela, Thailand (Chewapreecha *et al.*, 2014); 616 genomes from Massachusetts carriage strains (Croucher *et al.*, 2013a); 295 genomes from GenBank, which include 121 genomes from Atlanta, Georgia, The United States (Chancey *et al.*, 2015); 142 genomes from Rotterdam, the Netherlands (Hermans data set) (Bogaert *et al.*, 2001; Miller *et al.*, 2016); and 26 PMEN (Pneumococcal Molecular Epidemiology Network) genomes (McGee *et al.*, 2001; Miller *et al.*, 2016). The PMEN-1 (Croucher *et al.*, 2011) and Clonal Complex 3 (Croucher *et al.*, 2013b) data sets, containing 240 and 82 genomes, respectively, were a result of targeted sampling for specific clonal complexes of *S. pneumoniae*; as such, these strains were excluded from analyses that assumed random sampling. Contigs for the 142 Rotterdam strains have been deposited the European Nucleotide Archive as Study ID PRJEB10892, and contigs for the 26 PMEN strains have been deposited as Study ID PRJEB10893. Sequences for BlpH for strains manipulated in this paper have been deposited as MG675558 – MG675563 in NCIB. Details of the phylogenetic and sequence analysis are provided in the Supplemental Materials.

Bacterial strains and growth conditions

S. pneumoniae strains were grown as liquid cultures in C+Y medium (Moreno-Gamez *et al.*, 2016) at 37°C and transformed as described previously (Kjos *et al.*, 2016). For selection, *S. pneumoniae* was plated on Columbia agar supplemented with 2% defibrinated sheep blood (Johnny Rottier, Kloosterzande, Netherlands) and 1 µg/ml tetracycline, 100 µg/ml spectinomycin or 0.25 µg/ml erythromycin, when appropriate. *E. coli* was grown in LB medium with shaking at 37°C or plated on LA containing 100 µg/ml ampicillin.

Strain construction

Strains and plasmids used in this study are listed in Table S3. Full descriptions of strain construction for the expression of *blpSRH* alleles, the deletion of *blpSRHC*, and gene reporter constructs are given in the Supplemental Materials and Methods.

Luciferase assays

Luciferase assays were performed as described (Slager *et al.*, 2014; Kjos *et al.*, 2016). Briefly, *S. pneumoniae* cultures grown to OD₆₀₀ 0.4 were diluted 100-fold in C+Y medium

(pH 6.8) with 340 µg/ml luciferin. Luc-activity was measured in 96-well plates at 37°C, and OD₆₀₀ and luminescence (as relative luminescence units, RLU) were recorded every 10 minutes using Tecan Infinite 200 PRO. Synthetic peptides (BlpCs) were purchased from Genscript (Piscataway, NJ). Different concentrations of BlpCs were added to the culture wells after 100 min or in the beginning of the experiment, depending on the experiment. The data was plotted as RLU/OD over time to analyze induction of *blp* expression. Activation of a receptor from a signal was assigned when the luc-expression values (RLU/OD) were above the baseline in each experiment after the peptides were added, with the baseline defined as RLU/OD when no BlpC was added.

LacZ assays on agar plates

LacZ assays for testing induction by neighbouring colonies on plates were performed on C +Y agar (pH 8.0) covered with 40 µl of 40 mg/ml solution X-gal (spread on top of the plates). All strains were pre-grown to OD₆₀₀ 0.4, before 2 µl of the wild-type strains (BlpC producers) were spotted and allowed to dry. Then 2 µl of the different reporter strains were spotted next to the dried spot. The plates were incubated at 37°C over-night.

For induction with synthetic BlpC, C+Y agar plates (pH 7.2) were covered with 40 µl of 40 mg/ml solution X-gal and 5 µl 1 mg/ml BlpC (spread on top of the plates), and different reporter strains were spotted on top. The plates were incubated at 37°C over-night.

Stochastic Model

We built an individual-based spatial, stochastic model in which cells interact on a grid. We modeled four genotypes, which differ in the signaling molecule and bacteriocins that they produce as well as in the number and identity of signals that they respond to (Table S2). Bacteriocins produced by genotypes 1 and 2 specifically could kill genotypes 3 and 4 and vice versa. Signals produced by genotype 1 could induce genotypes 1 and 2 and similarly, signals produced by genotype 3 could induce genotypes 3 and 4; we therefore classify genotypes 2 and 4 as “eavesdropping genotypes”. Genotypes 1 and 3 can only respond to their own signal, as “signal-faithful genotypes”. All four genotypes have equivalent growth rates, which are only variable depending on if a cell is induced or uninduced. Eavesdropping cells respond to signals that they do not produce with variable degrees of affinity. We consider the affinity of a cell to its own signal as 100%, and ranged the affinity to the other signals in the case of eavesdropping genotypes to 0% - 90% for different simulations. Full model details are given in the Supplemental Materials and Methods.

Results

Molecular diversity of *blpH* and *blpC*

We examined 4 096 *S. pneumoniae* genomes taken from six data sets of strains (Maela, Massachusetts Asymptomatic, GenBank, Hermans, Georgia GenBank, and PMEN: 4 096 genomes in total) alongside two additional data sets that are intentionally biased to specific clonal sub-groups (Complex 3 and PMEN-1: 322 genomes in total). We identified *blpC* in 99.0% and *blpH* in 99.0% of the combined 4 418 genomes using a DNA reciprocal BLAST algorithm (Miller *et al.*, 2016); 98.2% of these strains contained both *blpC* and *blpH*. We

note that the few genomes apparently lacking a *blp* gene may still contain these genes, as the data sets contain incomplete draft genomes. Consistent with earlier work (Miller *et al.*, 2016), we found extensive allelic variation within *blpC*, which contains 37 alleles at the nucleotide level, 29 protein precursors, and 20 different BlpC signal peptides (range of 18 to 51-residue predicted mature signals), including signal peptides lacking a canonical double-glycine cleavage site. Nine of these peptide signal sequences were found in more than 0.5% of genomes (i.e., over 20 genomes; Table 1), and together these nine comprise ~98% of all signal variants. All signals under this 0.5% threshold were each confined to a single clade in the whole-genome phylogeny (Fig. S1). Each unique BlpC signal was designated with a letter from the NATO phonetic alphabet (Table 1). As expected for the genomes from intentionally biased samples, the PMEN-1 dataset almost exclusively carried the Golf signal (93.8%; Table S1), while the Clonal Complex 3 dataset almost exclusively carried the Kilo signal (97.6%; Table 1). The Bravo and Hotel signal peptides were exclusively found in strains collected as part of the Maela data set possibly indicating limited admixture between these strains and those from the other collections.

***blpC/blpH* intragenomic pairing is highly biased but not exclusive**

Phylogenetic analysis of *blpC* revealed four well-supported clades (Fig. 2) containing the following signals: 1) Alpha, Bravo, and Kilo; 2) Golf and Hotel; 3) Charlie; and 4) Delta, Echo, and Foxtrot. With the exception of the Delta signal, within-group signals are differentiated by a single amino acid or stop codon. The relationships between signaling groups within these major clades are uncertain, although there is evidence ($0.75 < \text{posterior probability} < 0.95$) that the Hotel, Bravo, and Delta signals are each monophyletic within their respective larger clades.

After accounting for recombination, phylogenetic analysis of the receptor domain of *blpH* (residues 1-229) identified five paraphyletic clades that are broadly concordant with the divisions observed for BlpC signals (Fig. 3), although there are many exceptions to this correspondence. Across the five clades, the classification of *blpH* alleles correlated with the BlpC signal in at least 75% of cases: (Alpha / Bravo / Kilo Clade: 86.6%; Echo / Foxtrot Clade: 90.0%; Delta Clade: 100%; Charlie Clade: 86.2%; Golf / Hotel Clade: 75.0%). Evidence of extensive recombination affecting the *blpH* kinase, intergenic region, and *blpC* signal (Fig. S2) suggests that recombination has caused some of these mismatches. Overall, from the 4 002 genomes with full-length *blpH* genes, 16.7% (667 genomes) show a lack of correspondence between signal and peptide, suggesting either that these strains are deficient in *blp* signaling or that these BlpH histidine kinases can be cross-induced by non-cognate BlpC signals. Overall frequencies by signal and receptor class are summarized in Fig. 4a.

Crosstalk and eavesdropping between BlpC signals and BlpH receptors

To examine the incidence of crosstalk and eavesdropping between signals and receptors experimentally, we measured the responsiveness of each of the major BlpH clades to synthetic peptides from each BlpC class. We transformed a *S. pneumoniae* D39 strain lacking the native *blp* regulatory genes (*blpSRHC*) with constructs expressing one of six different BlpH histidine kinases alleles: *blpSRH*^{D39} from the Alpha/Bravo/Kilo clade,

blpSRH^{PMEN-2} from the Echo/Foxtrot clade, *blpSRH*^{Hermans-33} from the Delta clade, *blpSRH*^{Hermans-1012} and *blpSRH*^{PMEN-14} from the Charlie clade, and *blpSRH*^{PMEN-18} from the Golf/Hotel clade. These strains also contained a reporter cassette, in which the *blp*-promoter from either P_{*blpK*} or P_{*blpT*} controlled expression of firefly luciferase (*luc*), GFP (*(sf)gfp*), and β-galactosidase (*lacZ*) (Kjos *et al.*, 2016). Deletion of the *blpC* signal gene and the native *blpSRH* genes from the D39 ancestor ensured that the reporter strains would only be induced in response to exogenously added signal via the introduced *blpSRH* systems. By exposing cells to a concentration gradient of exogenous peptide, we could estimate the peptide concentration that induced the maximum response as well the minimum concentration required to elicit a response. While the maximum response indicates the overall influence of a given peptide on each receptor, the minimal concentration required to induce a response provides an indication of the sensitivity of each receptor to every potential peptide partner.

Figures 4a-b shows that five of six P_{*blpK*} reporter strains were maximally induced by the BlpC signal carried by a significant majority of their wild type counterparts. However, we also see extensive evidence for crosstalk and eavesdropping between mismatched peptide:receptor pairs, demonstrating that some BlpH receptors are highly promiscuous while equally, several BlpC peptides can induce the *blp* operon in strains carrying non-cognate BlpH receptors. For example, *blpSRH*^{PMEN-2} (Echo / Foxtrot BlpH clade) could be induced by 4 out of 6 synthetic peptides, and the strain with *blpSRH*^{Hermans-1012} (Charlie BlpH clade) was strongly induced by the Echo and Foxtrot signals at 65% and 71% expression of its cognate signal. While there is clear evidence for cross-induction, these responses tended to be less sensitive to non-cognate peptides, with a minimum concentration required for induction of between 2-500-fold greater than with the cognate signal (Fig. 4c). By contrast, the strain with *blpSRH*^{Hermans-1012} (Charlie BlpH clade) was more sensitive to the non-cognate Echo and Foxtrot signals (1 ng/ml and 3.9 ng/ml) than to its cognate Charlie signal (7.8 ng/ml; Fig. 4c). The reporter strain carrying *blpSRH*^{Hermans-33} did not respond to any of the BlpC peptides, not even its cognate Delta BlpC (Fig. 4b-c). Interestingly, *blpSRH*^{Hermans-33}, as well as all other strains with *blpH* alleles in the Delta clade, contains a frameshift in the *blpR* gene, encoding the response regulator, thus preventing expression of the full-length *blpR*. This probably renders the QS systems non-functional and therefore not responsive to added peptide. All results with P_{*blpK*} were mirrored with a different set of reporter strains that used the *blpT* promoter for the reporter cassette (Fig. S3).

We conclude from these results that crosstalk among quorum-dependent peptide BlpC signals is common and concentration dependent, with strains able to eavesdrop onto multiple signals using cross-responsive receptors. Furthermore, these results are concordant with the patterns of co-association observed in our bioinformatics survey of pneumococcal strains. When only considering genomes carrying *blpC* and *blpH* alleles potentially capable of *blp* activation (as determined in Fig. 4b and 4c), 88.0 % of the strains are predicted to autoinduce *blp* expression under appropriate conditions, i.e., their genomes contain functionally active *blpC/blpH* pairs. Notably, however, this also indicates that a substantial proportion of strains (12.0%, 364 of 3 046 genomes) may not be able to autoinduce *blp* expression since they carry *blpC/blpH* pairs that were inactive in our experimental assay;

this is in addition to strains carrying Delta *blpC/blpH*, which was also unable to autoinduce *blp* expression in our assay.

Cross-induction between colonies

Pneumococci in the nasopharynx live in spatially structured colonies or biofilms. In order to determine if cross-induction between signaling cells could occur under these conditions where QS efficiency may be limited by signal diffusion (Redfield, 2002; Kümmerli and Brown, 2010; Yang *et al.*, 2010), we examined interactions between neighboring colonies endogenously secreting either cognate or non-cognate signals (Fig. 5). In control assays, we first demonstrated that colonies were induced by exogenous addition of peptide to the plate surface; these results were concordant with those in Figure 4b in 14 of 15 combinations (Fig. S4). Next, we measured expression of reporter strains when grown adjacent to wild-type colonies that secreted BlpC peptides at endogenous levels (Fig. 5A). We observed a response in the reporter strains as estimated by increased LacZ activity in 3 out of 6 strains, with 2 examples of induction by non-cognate BlpC signals. Interestingly, when the reporter strain expressing the BlpH from Hermans-1012 was grown adjacent to its wild type counterpart, there was no induction; instead this strain was induced by PMEN-14, which also produced the Charlie signal. The same strain was also induced by PMEN-2, which produced the Foxtrot signal (which induces Hermans-1012 at a lower concentration than with its cognate signal; Fig. 4C), and strain PMEN-18 (Golf/Hotel BlpH clade) was induced by PMEN-14, which produced the Charlie signal (Fig. 5). This may suggest that in addition to differences in the binding sensitivity of BlpC and BlpH, strains may also vary in the concentration of the diffusible signals that they secrete, at least under these experimental conditions. Consistent with our *in vitro* assays with synthesized peptides, these results show that *blp* operon expression can be activated by crosstalk between neighboring competing colonies secreting peptides at wild-type concentrations.

Evolutionary consequences of eavesdropping genotypes

Because the *blp* operon is auto-induced via a quorum-dependent process, cross-induction can potentially influence other strains by lowering the population density required for auto-induction. To examine the possible effects of cross-induction on bacteriocins, we developed a spatially explicit stochastic model to investigate conditions where genotypes with eavesdropping receptors may be favored over strains only able to respond to a single peptide signal. We further varied the signal affinity to eavesdropping receptors to determine how this altered the selective benefits of cross-induction. Simulations are initiated with cells of four genotypes randomly spaced upon a plane. The four genotypes each release their own QS signal at equal concentrations (Table S2). Cells bind these secreted signals in a concentration dependent manner, at which point they are induced to produce bacteriocins that kill susceptible neighbor cells at the cost of reduced growth for the producer (Ruparell *et al.*, 2016). While two faithful-signaling genotypes are only able to respond to their own signals, the two other eavesdropping genotypes can respond to multiple signals. The model does not take into account the complex regulatory interplay between quorum-sensing systems (ie. *blp* and *com* systems; (Kjos *et al.*, 2016; Wholey *et al.*, 2016)), but instead serves as a general model for studying eavesdropping in social bacteria. Our results shown in Fig. 6 lead to two conclusions. First, we observe strong benefits to eavesdropping cells that depends on the

degree of cross-sensitivity, or affinity, to non-cognate signals. Specifically, we found that higher affinity to non-cognate signal provides stronger ecological benefits. This results from earlier potential activation (Fig. S3) and secretion of bacteriocins in these cells, an effect that increases with greater affinity to non-cognate signals. Second, we find that the benefits to eavesdropping are strongly negative frequency-dependent, i.e. eavesdropping cells only gain benefits (in the form of earlier bacteriocin induction) when surrounded by faithful-signaling cells. When eavesdropping cells are rare, they benefit through maximum exposure to the alternative peptide, while after they increase in frequency they must rely solely on auto-induction. Because the benefits of eavesdropping are frequency-dependent, these simple simulations thus suggest that promiscuous receptor mutants with increased affinity to non-cognate signals will be able to rapidly invade populations of cells that can only respond to a single signal. Interestingly, the simulations also clarify that the affinity to non-cognate signals can be extremely low — even at 10% of the affinity to cognate signals — to provide benefits (Fig. 6).

Discussion

Pneumococcal bacteriocins are believed to play an important role in mediating intraspecific competitive interactions (Dawid *et al.*, 2007), and bacteriocins are found in nearly all strains (Miller *et al.*, 2016). However, individual strain *blp* composition shows no patterns with which strains are found to co-colonize the nasopharynx (Valente *et al.*, 2016). One possible explanation is that these bacteriocin dynamics are influenced by the social dynamics of their respective signaling systems, although this remains to be tested. Here, we show that the QS system regulating *blp* bacteriocins is highly polymorphic, that QS signals are frequently cross-reactive (crosstalk), and that promiscuous receptors can detect and respond to non-cognate signals (eavesdropping). Assays between adjacent colonies revealed that both behaviors occur at endogenous concentrations of secreted peptides, and simulations showed ecological benefits to strains that express promiscuous receptors. Together, these results suggest that social interactions influenced by QS signaling may strongly influence pneumococcal competition.

Previous surveys (De Saizieu *et al.*, 2000; Reichmann and Hakenbeck, 2000) of BlpC and BlpH identified four BlpC signals: the Alpha, Charlie, Foxtrot, and Golf signals in our nomenclature, which together represent ~75% of the strains in our sample (Table 1). By expanding our survey to thousands of strains, we identified several additional signal peptide families beyond those signals previously investigated (Pinchas *et al.* 2015): the Echo, Hotel, Delta, Bravo, and Kilo signals. The concordance between the phylogenies of *blpC* and *blpH* and the extensive co-occurrence in individual genomes suggest that these genes are co-evolving (Fig. 2, Fig. 3).

Previous work suggested that differences in the electric charge of residue 14 in BlpC is crucial for specificity (Pinchas *et al.* 2015). This residue is undoubtedly important because it differentiates the Alpha/Bravo/Kilo, Echo/Foxtrot, and Golf/Hotel signal groups; however, other BlpC residues are also likely to be important for BlpH binding, as signals that are identical at position 14 (e.g. Golf/Hotel, and Alpha/Bravo/Kilo/Charlie) differentially activate BlpH (Fig. 4). The co-variation between BlpC and BlpH also allows us to identify

residues in BlpH that are correlated with the QS signal. These results can serve as a guide for future experiments to unravel the specificity of the BlpC/BlpH interaction (Fig. S7, S8). Notably, our analysis of the BlpH receptor support previous findings that residues 17 and 119-124 are important for activation by BlpC signals (Pinchas et al. 2015), although additional residues also co-vary with specific BlpC signals (Fig. S7, S8).

While the correlation between *blpH* clade and co-occurring BlpC signal is high, in some clades the correlation drops to 75.0%, and BlpH / BlpC mismatches (Fig. 3) are common across the pneumococcal phylogeny. This can be compared to the exceptionally tight, > 99% correlation between the ComD QS receptor and CSP signal also in *S. pneumoniae* (Miller et al., 2017). There are at least two explanations for this difference. First, we do not know if different BlpH variants are functionally distinct. All *blpH* alleles could, in principle, be most responsive to their co-occurring BlpC. This seems unlikely, given the high frequency (up to 45 signal:receptor pairs) of *blpH* clade / BlpC mismatches (Fig. 3). Second, weaker selection for a highly auto-inducing *blp* QS could explain the difference between the *blp* and *com* QS systems. After a recombination event that results in a sub-optimal BlpH/BlpC pair for auto-induction, the BlpC signal may still be able to activate the co-occurring BlpH variant through crosstalk, albeit at a higher concentration of BlpC (Fig. 4C). While auto-induction may be decreased, such a genotype would gain an eavesdropping receptor that can potentially detect signals of surrounding genotypes. For comparison, there is no eavesdropping between CSP phenotypes in the *com* QS system, and very rare signal/receptor mismatches (Iannelli et al., 2005; Miller et al., 2017).

Signal/receptor mismatches can result in two outcomes for cell:cell communication. First, cells may be unable to detect the signal that they produce, rendering them unable to auto-induce. The lack of QS activation in strains producing the Delta signal (Hermans-33; Fig. 4) seemingly fits this description; however, interestingly, this is not caused by signal / receptor mismatch because there is perfect concordance between the Delta signal and the Delta *blpH* clade, and no tested signal activated strains with Delta *blpH*. Instead, all 143 strains carrying the Delta signal have a frameshift in *blpR*, which suggests functional deterioration of the QS system in these strains, which has not yet led to deterioration of *blpH* and *blpC*. At present, it is unclear if these Delta BlpC strains benefit in some way from the inactivation of *blpR*; however, such strains may continue to pay the cost of synthesizing BlpC if *blpC* is actively transcribed through another mechanism, such as via phosphorylated ComE from an activated competence system. This possibility suggests there may be weakened selection for functional *blp* QS.

The second outcome of signal/receptor mismatches for cell-to-cell communication is crosstalk and eavesdropping. We have ample evidence for crosstalk in the *blp* QS system, as all signal peptides except for the Alpha signal activated QS receptors in genotypes that produce other QS signals (Fig. 4b-c). Similarly, BlpH receptors (aside from the Alpha clade) were eavesdropping QS receptors able to detect more than one QS peptide signal (Fig. 4b, Fig. 4c). Each of the receptors we tested (except for the signal-blind BlpH Delta clade) was maximally induced with a single set of related signals and decreased to 3-71% with signals that the receptors were eavesdropping upon (Fig 4b). This suggests that there are no 'generalist' receptors that are able to listen to multiple signals with equal responsiveness.

Crosstalk was observed in previous research on the *blp* system (Pinchas et al. 2015; see asterisks in Fig. 4c and Table 1 alternative signal names), and results from this study indicated that *blpH* alleles with more crosstalk were less sensitive to BlpC (Pinchas *et al.*, 2015). However, the results reported here show that receptors from strains PMEN-2 and PMEN-14 were highly sensitive to their cognate signal (1.0 ng/ml) despite showing crosstalk at low (15.6 ng/ml; Fig. 4c) signal concentrations of non-cognate peptides, thereby suggesting that the trade-off between crosstalk and sensitivity of *blpH* alleles is not universal. Building upon the results of previous studies (Pinchas *et al.*, 2015), we demonstrate that eavesdropping can activate *blp* expression patterns in neighboring colonies.

What are the potential consequences of crosstalk and eavesdropping? Crosstalk may enable one strain to manipulate competing strains into inducing their QS system at lower densities, thereby causing them to secrete bacteriocins and induced immunity proteins earlier. At present, it is unclear how such crosstalk would be beneficial to cells producing cross-reactive signals, unless premature production of bacteriocins or immunity introduces energetic or other costs to cells responding at sub-quorum densities. Similar benefits have been shown to exist for public goods in Gram-negative bacteria (West *et al.*, 2012; Diggle *et al.*, 2007) and specifically for public goods that offer higher benefits to QS responding cells in *Bacillus subtilis* (Zhang *et al.*, 2015). By contrast, it is easier to envision the potential benefits of eavesdropping, which can both lead to earlier activation of bacteriocins (although this may also have attendant costs) and earlier induction of cross-reactive immunity. Our simulations suggest that this could be beneficial even if the affinity of promiscuous receptors is only 10% of the affinity for their cognate signal (Fig. 6). This value falls within the range of responses we measured experimentally (Fig. 4c). This level of responsiveness is also sufficient to induce the *blp* operon among adjacent colonies secreting peptides at endogenous levels (Fig. 5).

How does this amount of crosstalk specifically affect bacteriocin-mediated competition between *S. pneumoniae* strains? This is challenging to answer conclusively. First, extensive variation in the kinase domain of BlpH, the response regulator BlpR, and the leader sequences of the *blp* bacteriocins (Miller *et al.*, 2016) prevents a full understanding of how signal concentrations translate into increased bacteriocin export. A systematic approach to investigate each of these molecules and their variants in the laboratory will be required to address this question. Second, a bioinformatics approach to examine evidence of selection in coordination with the BlpH receptor or BlpC signal is not possible due to the inability to align the entire *blp* operon and because recombination breaks up potential associations that are otherwise selected for. Third, the effects of crosstalk and eavesdropping will also depend on the activation of the *com* QS system, which promotes the expression and export of *blpC* at a low level (Fig. 1), even when the ABC-transporter genes *blpAB* are disrupted by early termination mutations (Kjos *et al.*, 2016; Wholey *et al.*, 2016). For example, we found that both wildtype strains D39 and PMEN-14 could activate *blp* expression in neighboring colonies (Fig. 5) despite having disrupted *blpA* (for PMEN-14) or disrupted *blpA* and *blpB* (for D39).

Signaling interactions *in vitro* can lead to complex ecological outcomes that may influence competitive interactions between strains. As yet, however, it is unclear how these

interactions will play out in the complex within-host environment of the human nasopharynx (Valente *et al.*, 2016). In addition, it remains unclear how these interactions directly influence bacteriocin-mediated killing and immunity. Clearly, the heterogeneous conditions *in vivo* differ markedly between liquid cultures or agar surfaces. Diffusion is more limited; population densities may be strongly constrained overall and spatially, and unknown host factors may further modify intra-strain competitive dynamics. These factors, among others, may alter the level and dispersion of signal peptides as well as the sensitivity of individual strains to these signals. More generally, our results reinforce the importance of social interactions among bacteria for mediating competitive dynamics. Many ecologically relevant bacterial traits are regulated by QS, and many of these systems, especially in Gram-positive peptide signaling systems, are polymorphic. While some of these systems (e.g. pneumococcal competence regulated by the *com* QS system) have only few signal types and show no cross-reactivity, many others signal are polymorphic with substantial cross-reactivity (e.g. Agr in *S. aureus* (Ji *et al.*, 1997) and ComX in *B. subtilis* (Stefanic *et al.*, 2012)). It remains to be investigated which of these polymorphic QS signals have ecological effects and which factors (such as co-colonization or extensive intraspecific competition) result in the evolution of crosstalk and eavesdropping.

Supplementary Material

Refer to Web version on PubMed Central for supplementary material.

Acknowledgements

We would like to thank Frank Lake for technical assistance. This work was supported by the Biotechnology and Biological Sciences Research Council (grant number BB/J006009/1) to DER and ISR and by the Wellcome Trust (105610/Z/14/Z) to the University of Manchester. MA is supported by the Biotechnology and Biological Sciences Research Council (grant number BB/M000281/1). Work in the Veening lab is supported by the EMBO Young Investigator Program, a VIDI fellowship (864.12.001) from the Netherlands Organisation for Scientific Research, Earth and Life Sciences (NWO-ALW) and ERC starting grant 337399-PneumoCell. MK is supported by a grant from The Research Council of Norway (250976/F20).

References

- Ansaldi M, Dubnau D. Diversifying selection at the Bacillus quorum-sensing locus and determinants of modification specificity during synthesis of the ComX pheromone. *J Bacteriol.* 2004; 186:15–21. [PubMed: 14679219]
- Atkinson S, Williams P. Quorum sensing and social networking in the microbial world. *J R Soc.* 2009; 6:959–78.
- Bassler BL, Greenberg EP, Stevens AM. Cross-species induction of luminescence in the quorum-sensing bacterium *Vibrio harveyi*. *J Bacteriol.* 1997; 179:4043–4045. [PubMed: 9190823]
- Bogaert D, Engelen MN, Timmers-Reker AJM, Elzenaar KP, Peerbooms PGH, Coutinho RA, et al. Pneumococcal carriage in children in the Netherlands: A molecular epidemiological study. *J Clin Microbiol.* 2001; 39:3316–3320. [PubMed: 11526169]
- Bouillaut L, Perchat S, Arold S, Zorrilla S, Slamti L, Henry C, et al. Molecular basis for group-specific activation of the virulence regulator PlcR by PapR heptapeptides. *Nucleic Acids Res.* 2008; 36:3791–3801. [PubMed: 18492723]
- Brugger SD, Frey P, Aebi S, Hinds J, Muhlemann K. Multiple colonization with *S. pneumoniae* before and after introduction of the seven-valent conjugated pneumococcal polysaccharide vaccine. *PLoS One.* 2010; 5:e11638. [PubMed: 20661289]

- Chancey ST, Agrawal S, Schroeder MR, Farley MM, Tettelin HH, Stephens DS. Composite mobile genetic elements disseminating macrolide resistance in *Streptococcus pneumoniae*. *Front Microbiol.* 2015; 6:1–14. [PubMed: 25653648]
- Chewapreecha C, Harris SR, Croucher NJ, Turner C, Marttinen P, Cheng L, et al. Dense genomic sampling identifies highways of pneumococcal recombination. *Nat Genet.* 2014; 46:305–9. [PubMed: 24509479]
- Crespi BJ. The evolution of social behavior in microorganisms. *Trends Ecol Evol.* 2001; 16:178–183. [PubMed: 11245940]
- Croucher NJ, Finkelstein Ja, Pelton SI, Mitchell PK, Lee GM, Parkhill J, et al. Population genomics of post-vaccine changes in pneumococcal epidemiology. *Nat Genet.* 2013a; 45:656–63. [PubMed: 23644493]
- Croucher NJ, Harris SR, Fraser C, Quail MA, Burton J, van der Linden M, et al. Rapid pneumococcal evolution in response to clinical interventions. *Science (80-).* 2011; 331:430–434.
- Croucher NJ, Mitchell AM, Gould KA, Inverarity D, Barquist L, Feltwell T, et al. Dominant role of nucleotide substitution in the diversification of serotype 3 pneumococci over decades and during a single infection. *PLoS Genet.* 2013b; 9 e-pub ahead of print. doi: 10.1371/journal.pgen.1003868
- Dawid S, Roche AM, Weiser JN. The *blp* bacteriocins of *Streptococcus pneumoniae* mediate intraspecies competition both *in vitro* and *in vivo*. *Infect Immun.* 2007; 75:443–451. [PubMed: 17074857]
- Diggle SP, Griffin AS, Campbell GS, West SA. Cooperation and conflict in quorum-sensing bacterial populations. *Nature.* 2007; 450:411–414. [PubMed: 18004383]
- Eldar A. Social conflict drives the evolutionary divergence of quorum sensing. *Proc Natl Acad Sci.* 2011; 108:13635–13640. [PubMed: 21807995]
- García-Rodríguez JA, Fresnadillo Martínez MJ. Dynamics of nasopharyngeal colonization by potential respiratory pathogens. *J Antimicrob Chemother.* 2002; 50(Suppl S):59–73.
- Håvarstein LS, Diep DB, Nes IF. A family of bacteriocin ABC transporters carry out proteolytic processing of their substrates concomitant with export. *Mol Microbiol.* 1995; 16:229–240. [PubMed: 7565085]
- Iannelli F, Oggioni MR, Pozzi G. Sensor domain of histidine kinase ComD confers competence phenotype specificity in *Streptococcus pneumoniae*. *FEMS Microbiol Lett.* 2005; 252:321–326. [PubMed: 16209911]
- Ji G, Beavis R, Novick RP. Bacterial interference caused by autoinducing peptide variants. *Science (80-).* 1997; 276:2027–2030.
- Jiricny N, Diggle SP, West SA, Evans BA, Ballantyne G, Ross-Gillespie A, et al. Fitness correlates with the extent of cheating in a bacterium. *J Evol Biol.* 2010; 23:738–747. [PubMed: 20210835]
- Kjos M, Miller E, Slager J, Lake FB, Gericke O, Roberts IS, et al. Expression of *Streptococcus pneumoniae* bacteriocins is induced by antibiotics via regulatory interplay with the competence system. *PLOS Pathog.* 2016; 12:e1005422. [PubMed: 26840404]
- Kümmerli R, Brown SP. Molecular and regulatory properties of a public good shape the evolution of cooperation. *Proc Natl Acad Sci.* 2010; 107:18921–18926. [PubMed: 20944065]
- Lux T, Nuhn M, Hakenbeck R, Reichmann P. Diversity of bacteriocins and activity spectrum in *Streptococcus pneumoniae*. *J Bacteriol.* 2007; 189:7741–7751. [PubMed: 17704229]
- McGee L, McDougal L, Zhou J, Spratt BG, Tenover FC, George R, et al. Nomenclature of major antimicrobial-resistant clones of *Streptococcus pneumoniae* defined by the pneumococcal molecular epidemiology network. *J Clin Microbiol.* 2001; 39:2565–2571. [PubMed: 11427569]
- Meats E, Brueggemann AB, Enright MC, Sleeman K, Griffiths DT, Crook DW, et al. Stability of serotypes during nasopharyngeal carriage of *Streptococcus pneumoniae*. *J Clin Microbiol.* 2003; 41:386–392. [PubMed: 12517877]
- Miller EL, Abrudan MI, Roberts IS, Rozen DE. Diverse ecological strategies are encoded by *Streptococcus pneumoniae* bacteriocin-like peptides. *Genome Biol Evol.* 2016; 8:1072–1090. [PubMed: 26983823]
- Miller EL, Evans BA, Cornejo OE, Roberts IS, Rozen D. Pherotype polymorphism in *Streptococcus pneumoniae* has no obvious effects on population structure and recombination. *Genome Biol Evol.* 2017; 9:2546–2559. [PubMed: 28992304]

- Miller MB, Bassler BL. Quorum sensing in bacteria. *Annu Rev Microbiol.* 2001; 55:165–199. [PubMed: 11544353]
- Moreno-Gamez S, Sorg R, Kjos M, Weissing F, van Doorn GS, Veening J. Quorum sensing integrates environmental cues, cell density and cell history to control bacterial competence. *bioRxiv.* 2016; 31 75762.
- Pinchas MD, LaCross NC, Dawid S. An electrostatic interaction between BlpC and BlpH dictates pheromone specificity in the control of bacteriocin production and immunity in *Streptococcus pneumoniae*. *J Bacteriol.* 2015; 197:1236–1248. [PubMed: 25622617]
- Pollak S, Omer-Bendori S, Even-Tov E, Lipsman V, Bareia T, Ben-Zion I, et al. Facultative cheating supports the coexistence of diverse quorum-sensing alleles. *Proc Natl Acad Sci.* 2016; 113:2152–2157. [PubMed: 26787913]
- Redfield RJ. Is quorum sensing a side effect of diffusion sensing? *Trends Microbiol.* 2002; 10:365–370. [PubMed: 12160634]
- Regev-Yochay G, Raz M, Dagan R, Porat N, Shainberg B, Pinco E, et al. Nasopharyngeal carriage of *Streptococcus pneumoniae* by adults and children in community and family settings. *Clin Infect Dis.* 2004; 38:632–639. [PubMed: 14986245]
- Reichmann P, Hakenbeck R. Allelic variation in a peptide-inducible two-component system of *Streptococcus pneumoniae*. *FEMS Microbiol Lett.* 2000; 190:231–236. [PubMed: 11034284]
- Ruparell A, Dubern JF, Ortori CA, Harrison F, Halliday NM, Emtage A, et al. The fitness burden imposed by synthesizing quorum sensing signals. *Sci Rep.* 2016; 6 33101.
- De Saizieu A, Gardes C, Flint N, Wagner C, Kamber M, Mitchell TJ, et al. Microarray-based identification of a novel *Streptococcus pneumoniae* regulon controlled by an autoinduced peptide. *J Bacteriol.* 2000; 182:4696–4703. [PubMed: 10940007]
- Sauver JS, Marrs CF, Foxman B, Somsel P, Madera R, Gilsdorf JR. Risk factors for otitis media and carriage of multiple strains of *Haemophilus influenzae* and *Streptococcus pneumoniae*. *Emerg Infect Dis.* 2000; 6:622–630. [PubMed: 11076721]
- Schluter J, Schoech AP, Foster KR, Mitri S. The evolution of quorum sensing as a mechanism to infer kinship. *PLOS Comput Biol.* 2016; 12:e1004848. [PubMed: 27120081]
- Slager J, Kjos M, Attaiech L, Veening J-W. Antibiotic-induced replication stress triggers bacterial competence by increasing gene dosage near the origin. *Cell.* 2014; 157:395–406. [PubMed: 24725406]
- Son MR, Shchepetov M, Adrian PV, Madhi SA, de Gouveia L, von Gottberg A, et al. Conserved mutations in the pneumococcal bacteriocin transporter gene, *blpA*, result in a complex population consisting of producers and cheaters. *MBio.* 2011; 2 e-pub ahead of print. doi: 10.1128/mBio.00179-11
- Stefanic P, Decorosi F, Viti C, Petito J, Cohan FM, Mandic-Mulec I. The quorum sensing diversity within and between ecotypes of *Bacillus subtilis*. *Environ Microbiol.* 2012; 14:1378–1389. [PubMed: 22390407]
- Strassmann JE, Queller DC. Evolution of cooperation and control of cheating in a social microbe. *Proc Natl Acad Sci.* 2011; 108:10855–10862. [PubMed: 21690338]
- Swem LR, Swem DL, Wingreen NS, Bassler BL. Deducing receptor signaling parameters from in vivo analysis: LuxN/AI-1 quorum sensing in *Vibrio harveyi*. *Cell.* 2008; 134:461–473. [PubMed: 18692469]
- Turner P, Turner C, Jankhot A, Helen N, Lee SJ, Day NP, et al. A longitudinal study of *Streptococcus pneumoniae* carriage in a cohort of infants and their mothers on the Thailand-Myanmar border. *PLoS One.* 2012; 7 e-pub ahead of print. doi: 10.1371/journal.pone.0038271
- Valente C, Dawid S, Pinto FR, Hinds J, Simões AS, Gould KA, et al. The *blp* locus of *Streptococcus pneumoniae* plays a limited role in the selection of strains that can cocolonize the human nasopharynx. *Appl Environ Microbiol.* 2016; 82:5206–5215. [PubMed: 27316956]
- Waters CM, Bassler BL. Quorum Sensing: Cell-to-cell communication in bacteria. *Annu Rev Cell Dev Biol.* 2005; 21:319–346. [PubMed: 16212498]
- West SaGriffin AS, Gardner A, Diggle SP. Social evolution theory for microorganisms. *Nat Rev Microbiol.* 2006; 4:597–607. [PubMed: 16845430]

- West SA, Winzer K, Gardner A, Diggle SP. Quorum sensing and the confusion about diffusion. *Trends Microbiol.* 2012; 20:586–594. [PubMed: 23084573]
- Wholey W-Y, Kochan TJ, Storck DN, Dawid S. Coordinated bacteriocin expression and competence in *Streptococcus pneumoniae* contributes to genetic adaptation through neighbor predation. *PLoS Pathog.* 2016; 12:e1005413. [PubMed: 26840124]
- Wyllie AL, Chu MLJN, Schellens MHB, Gastelaars JVE, Jansen MD, Van Der Ende A, et al. *Streptococcus pneumoniae* in saliva of Dutch primary school children. *PLoS One.* 2014; 9:1–8.
- Yang J, Evans BA, Rozen DE. Signal diffusion and the mitigation of social exploitation in pneumococcal competence signalling. *Proc R Soc B Biol Sci.* 2010; 277:2991–2999.
- Zhang F, Kwan A, Xu A, Süel GM. A synthetic quorum sensing system reveals a potential private benefit for public good production in a biofilm. *PLoS One.* 2015; 10:15–19.

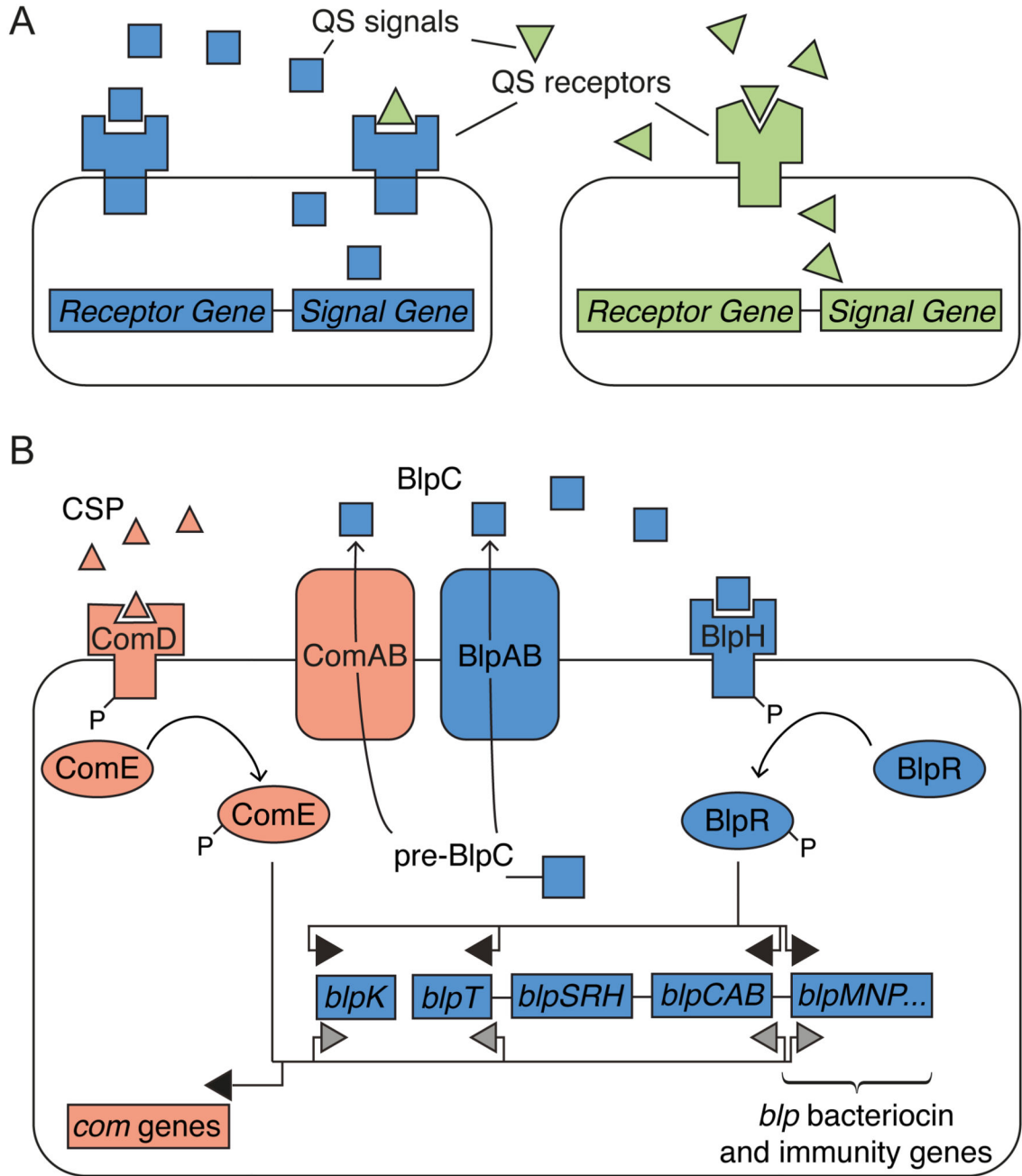


Figure 1. QS eavesdropping, crosstalk, and regulation. A) Eavesdropping occurs when a QS receptor of a cell is activated by a QS signal that the cell does not produce, such as activation of the blue QS receptor by both the cognate blue square signal and non-cognate green triangle signal. Crosstalk occurs when a QS signal activates more than one receptor, such as the green triangle signal activating both the cognate green QS receptor and the non-cognate blue QS receptor. B) *blp* QS regulation. External BlpC signal binds to histidine kinase receptor BlpH. This activates response regulator BlpR through phosphorylation, which increases

transcription of *blpABC*, *blpT*, the *blp* bacteriocins (including *blpK*), and immunity genes. Pre-BlpC is processed and transported out of the cell by ABC transporters ComAB and BlpAB. Similarly, QS signal CSP binds to the histidine kinase receptor ComD, thereby phosphorylating the response regulator ComE, which increases transcription of *blpC* and the *blp* operon (although to a lower level than BlpR) as well as *com*-specific genes.

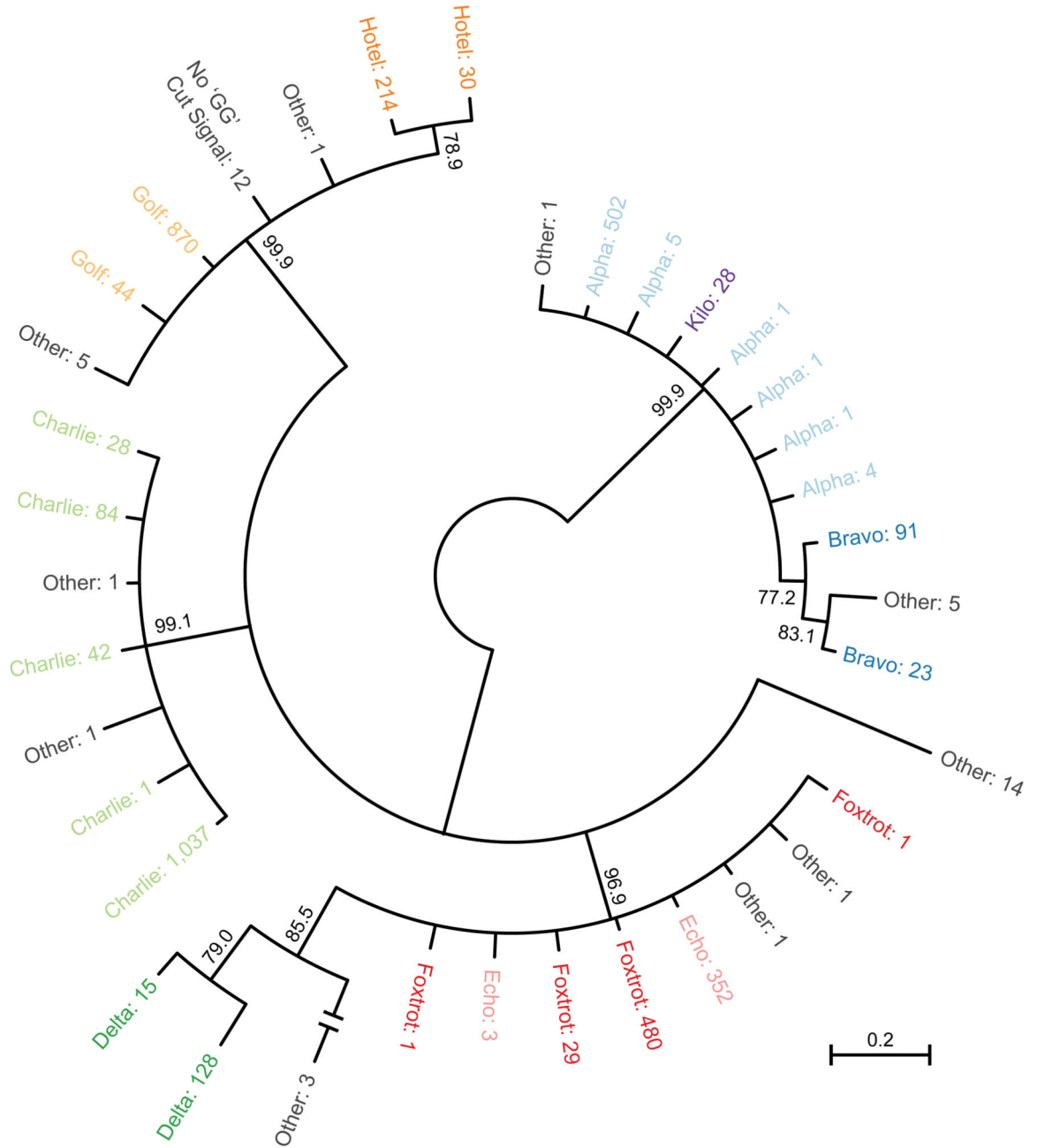


Figure 2. Bayesian unrooted phylogenetic tree of *blpC*. Taxa are colored by mature BlpC signal with the signal designation followed by the number of genomes containing the allele. Internal nodes show the posterior probabilities of clades; we collapsed clades with less than 0.75 posterior probability.

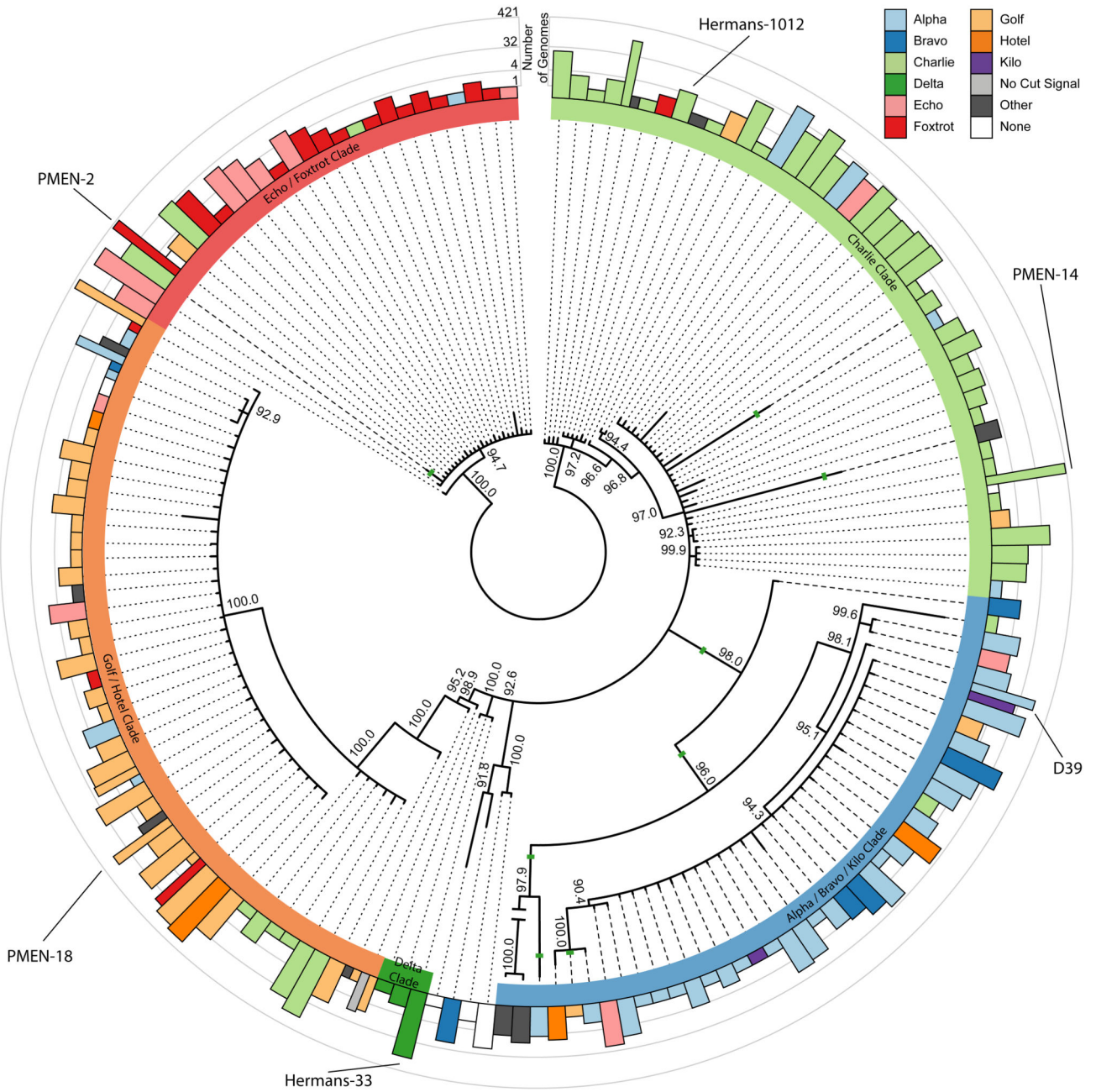


Figure 3. Bayesian unrooted phylogenetic tree of *blpH* alleles. The outer ring shows the number of 4 096 genomes with each *blpH* allele, color-coded by their co-occurring B1pC signal and on a log scale. The inner ring denotes the *blpH* clade type, and recombination events within *blpH* are shown as solid green lines. Mismatches between *blpH* clade and B1pC signal are indicated by dashed lines. Internal nodes show the posterior probabilities of clades; we collapsed clades with less than 90.0% posterior probability.

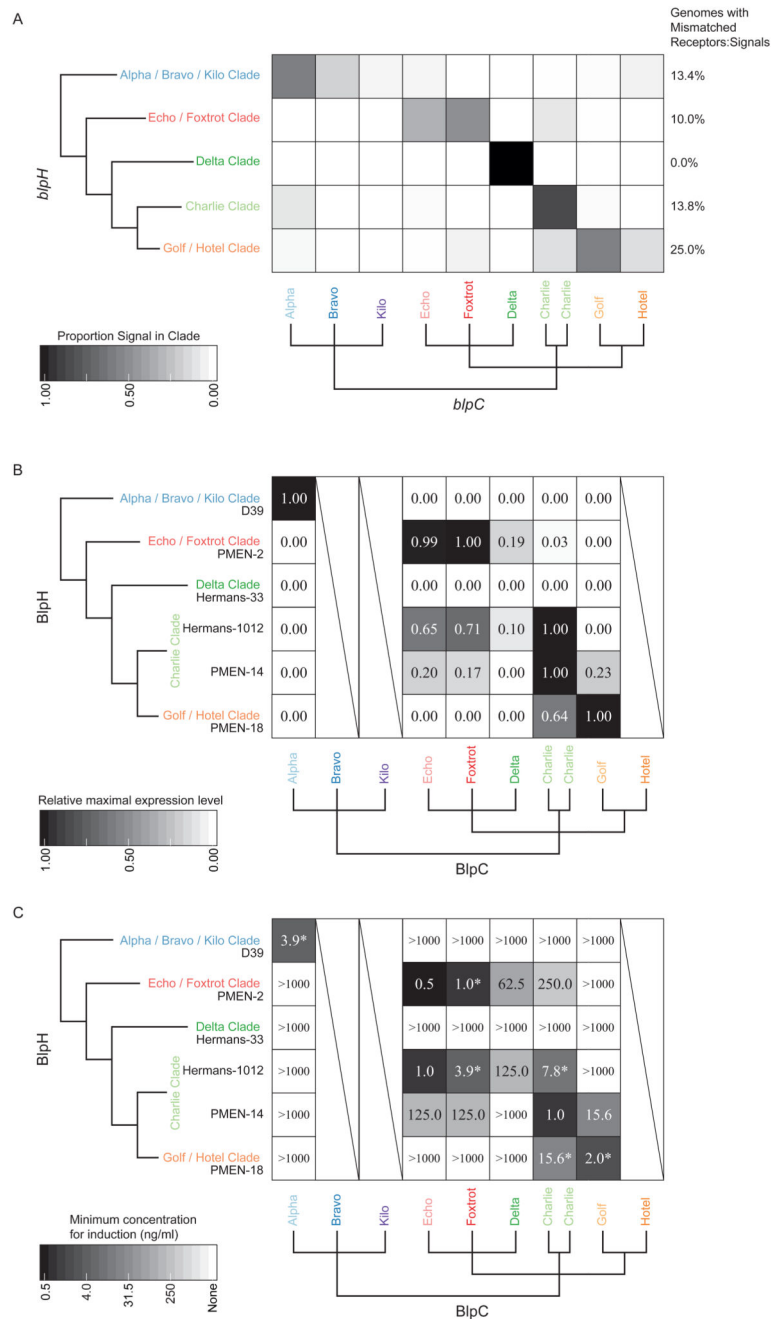


Figure 4. A) Proportion of each BlpC signal within genomes containing each *blpH* clade. The phylograms are simplified versions of Fig. 1 and Fig. 2. B) The relative maximal expression levels of *luc* following addition of 1 μ g/ml of synthesized BlpC signal peptide. The maximum expression level for each reporter strain was set to 1. Raw data is found in Fig. S5 C) The minimum concentration of synthesized BlpC signal peptide required for *luc* induction in reporter strains with different BlpH. Asterisks indicate receptor/signal pair *blp*

activation reported in (Pinchas *et al.*, 2015). Example of raw data is provided in Fig. S6. The Bravo, Kilo, and Hotel signal peptides were not synthesized and are denoted with slashes.

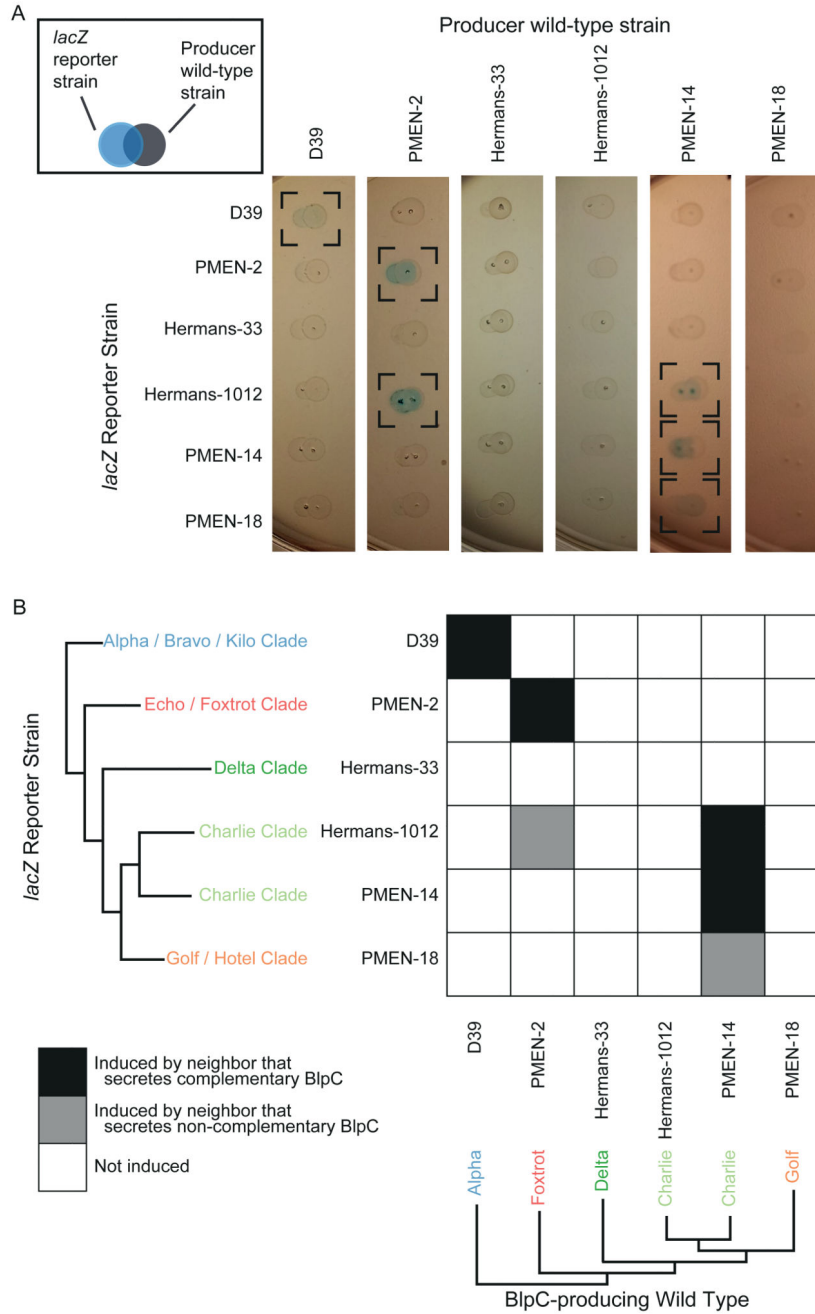


Figure 5. LacZ induction by neighboring colonies on agar plates. A) The wild-type strains were spotted next to the reporter strains (see box), and induction of *blp* expression by the wild-type produced BlpC is shown as faint blue colonies (indicated by brackets). The experiment was repeated three times with the same result, and a representative photo of the plates is shown. B) Summary of the results from B. Squares in white indicate no induction of the reporter strain for colony pairs, while black and blue indicate induction by cognate and non-cognate BlpCs, respectively.

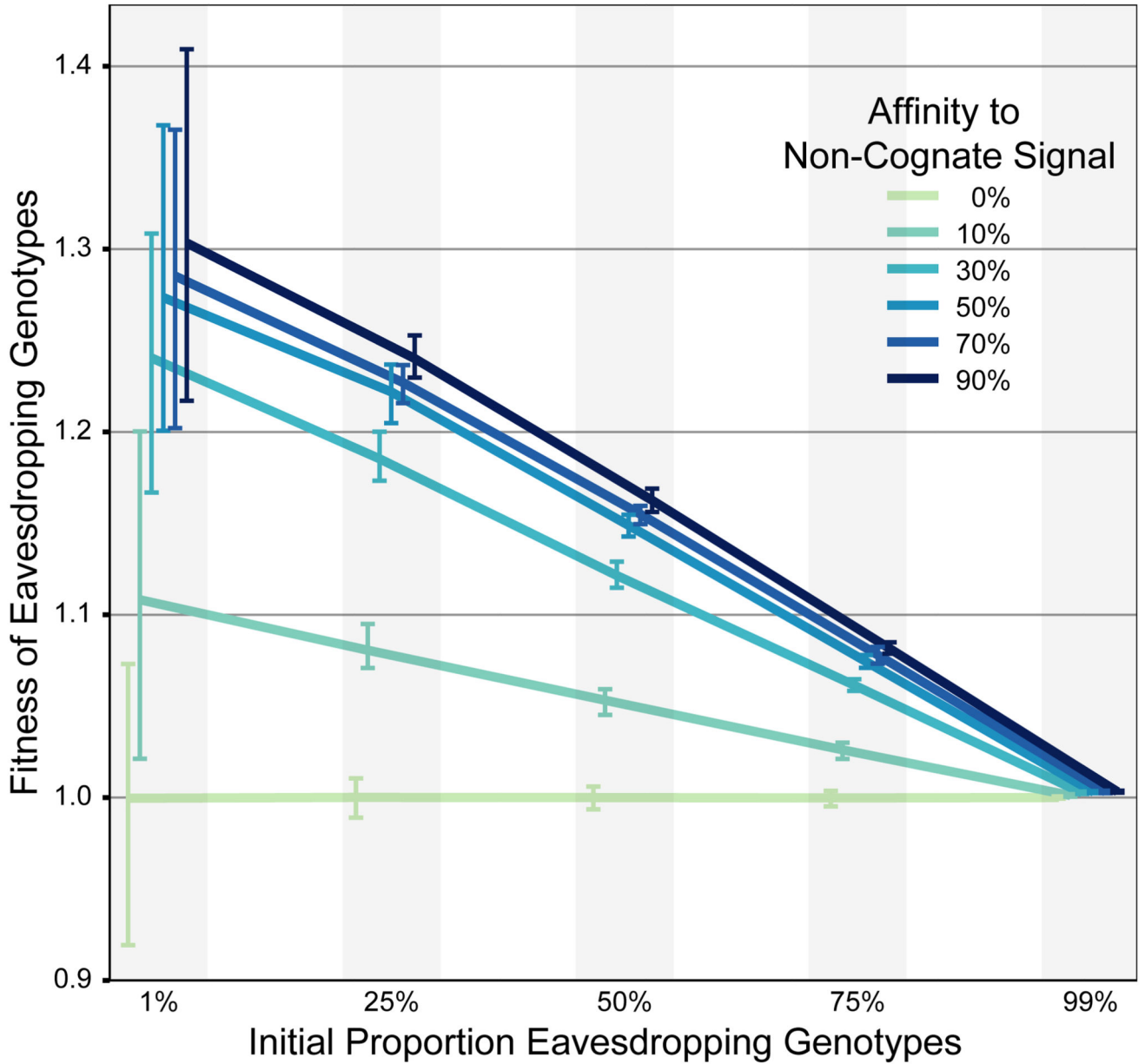


Figure 6. Average fitness of eavesdropping genotypes that produce bacteriocins in response to multiple signals in a spatially explicit, stochastic model. Simulations were started with five proportions of eavesdropping genotypes mixed with signal-faithful genotypes, as indicated on the x-axis. Absolute fitness values on the y-axis above 1.0 indicate that the genotype can increase in frequency in the population. Affinity to other genotypes' signals are a percentage of affinity to a genotype's own signal for eavesdropping genotypes. Error bars link the 25% and 75% quantiles for the final eavesdropping genotypes' fitness across 100 simulations.

Table 1

Signal	Signal Group	Mature AA Sequence ^d	Frequency in Unbiased Sets	Genomes Used in This Paper with Mature Signal	Reference Genomes with Mature Signal	Alternative Name for Signal
Alpha	Alpha/Bravo/Kilo	G W W E L L H E T I L S K F K I T K A L E L P I Q L	0.125	D39	R6	R6
Bravo	Alpha/Bravo/Kilo	<u>G</u> L W E L L H E T I L S K F K I T K A L E L P I Q L	0.028			
Kilo	Alpha/Bravo/Kilo	<u>E</u> W W E L L H E T I L S K F K I T K A L E L P I Q L	0.007		OXC141	
Charlie	Charlie	G L W E D L Y S L N I K H N N T K G L H H P I Q L	0.291	Hermans-1012, PMEN-14	SPNA45, INV200	6A
Delta	Delta	G W W K D L L H R E N V I E Q N N T K G F N Q P I Q L	0.035	Hermans-33	ECC_3510	
Echo	Echo/Foxtrot	G W W E D F L Y R F N I E Q K N T K G F H Q P I Q L	0.087			
Foxtrot	Echo/Foxtrot	G W W E D F L Y R F N I E Q K N T K G F Y Q P I Q L	0.125	PMEN-2	P164	P164
Golf	Golf/Hotel	G L W E D L L Y N I N R Y A H Y I T	0.223	PMEN-18	TIGR4, INV104	T4
Hotel	Golf/Hotel	G L W E D L L Y N I N R Y A H Y I T Q E L H H P I Q L	0.06			
Other, or no 'GG' cleavage site						
No <i>bpc</i>			0.009			
			0.011			

^aConserved residues are in bold. Residues that differentiate signals within a signal group are underlined.