

Additional file 1: Additional figures and tables

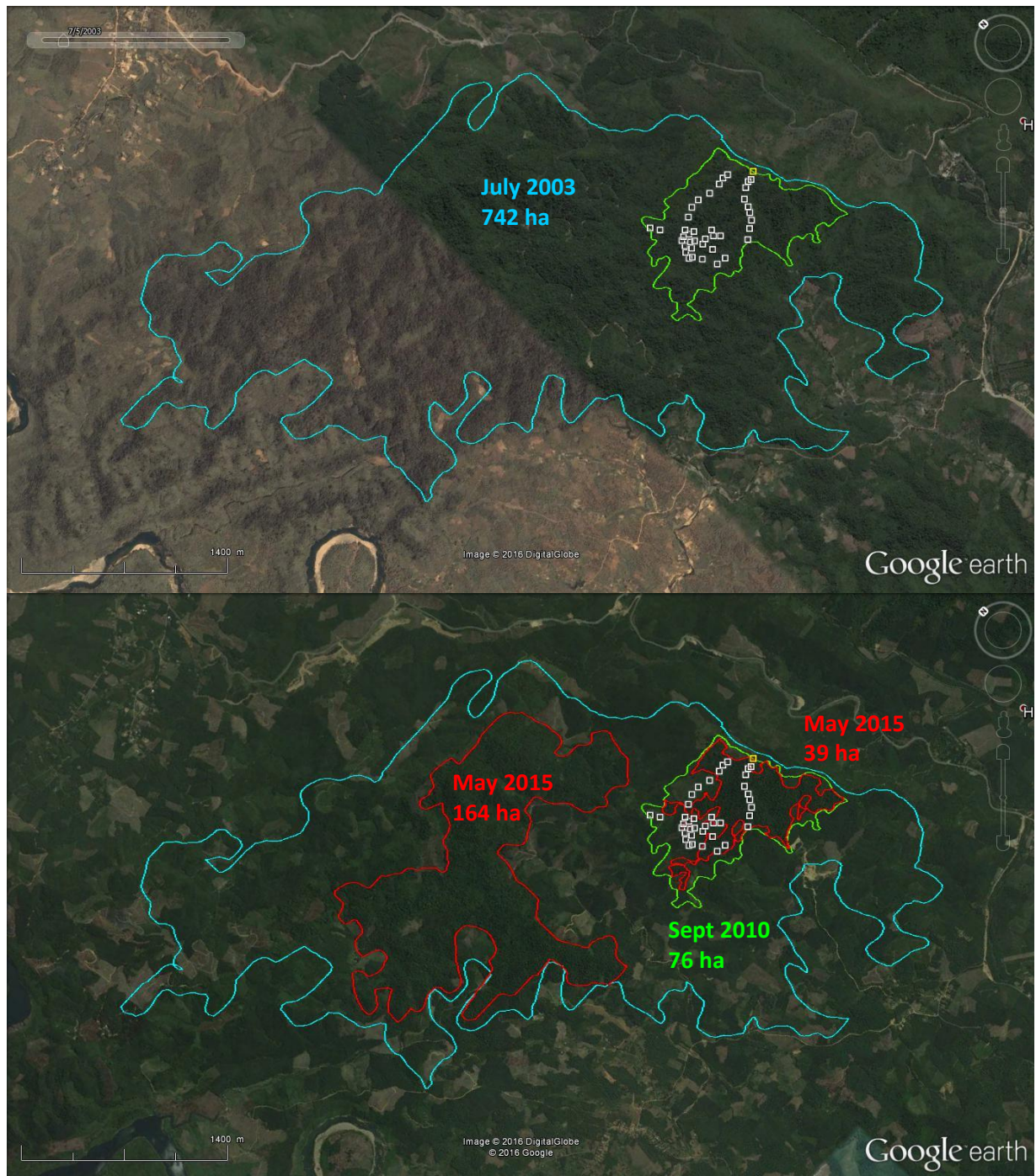


Fig. S1 Maps showing the reduction of the initial lowland forest from about 742 hectares in July 2003 (blue outline) to two smaller forest fragments totaling 203 hectares in May 2015 (red outlines). The smaller fragment (HPC-forest) was surveyed in July-August 2010 with the approximate extension shown in green color outline.

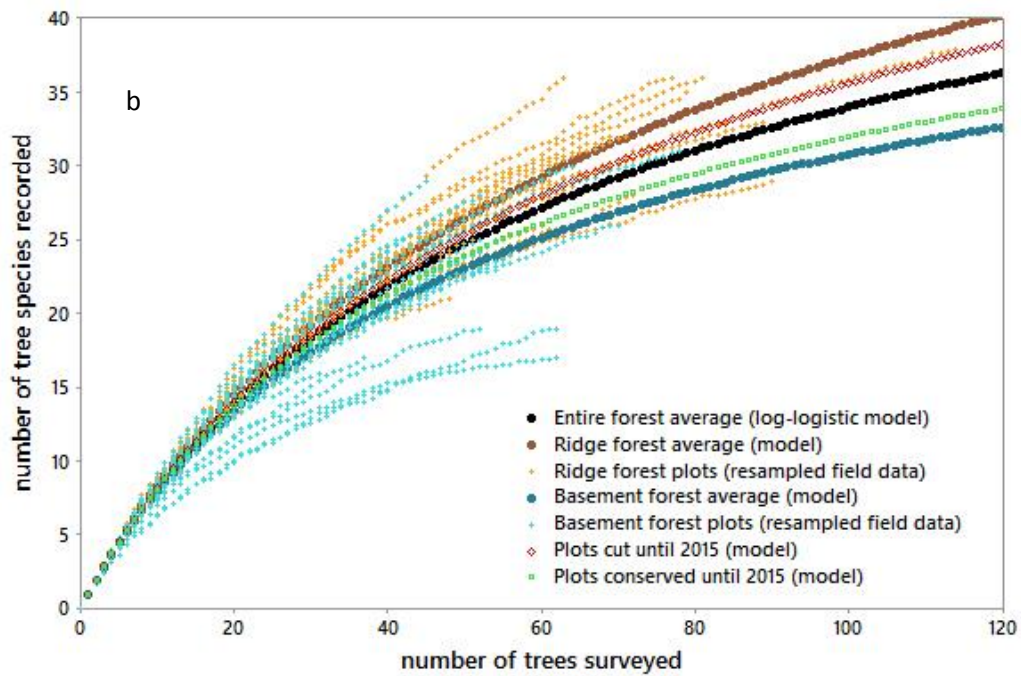
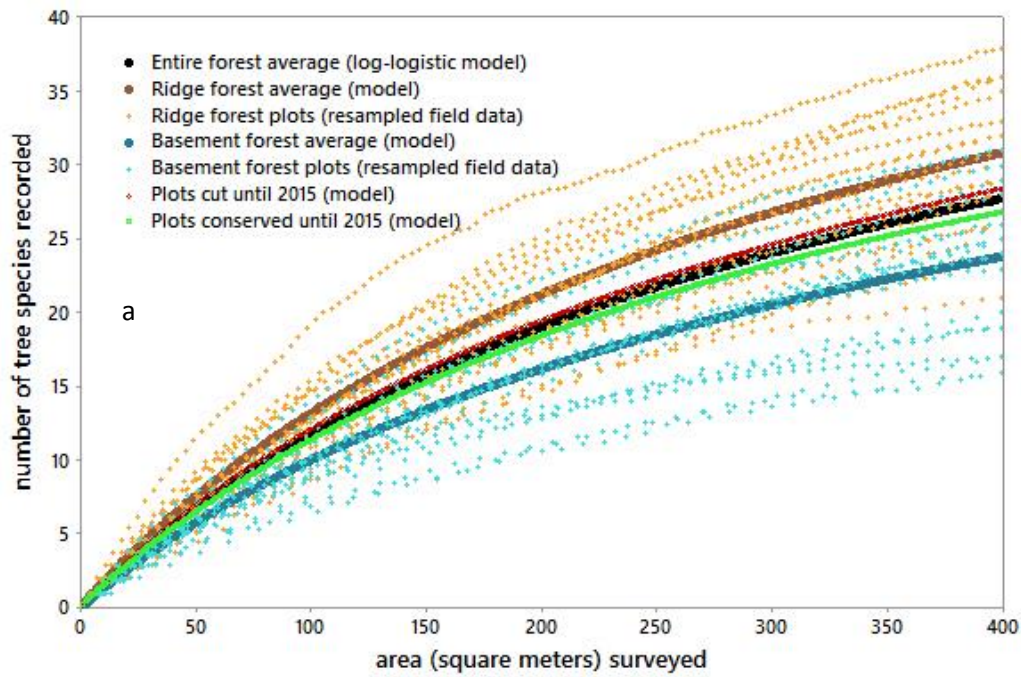


Fig. S2 Plot-level species rarefaction curves in terms of **a)** plot area and **b)** tree individuals recorded on plots. The true data (small dots, averages of 20 resamplings) are shown for plots in R- and B-forest. Fitted log-logistic models (large-dotted lines) are shown for the entire forest, for R- and B-forest, and for plots destroyed or conserved in between 2010-2015.



Fig. S3-a Relative abundance of species in different biomass (eAGB) size categories, i.e. ‘seedlings’, ‘<10 kg’, and ‘10-100 kg’ on R- and B-forest types.

