

# CADMUS

## A Novel MRI-Based Classification of Spontaneous Intracerebral Hemorrhage Associated With Cerebral Small Vessel Disease

Martina B. Goeldlin, MD, Madlaine Mueller, MD, Bernhard M. Siepen, MD, Wenpeng Zhang, MSc, Hatice Ozkan, MPhil, Martina Locatelli, MD, Yang Du, Waldo Valenzuela, PhD, Piotr Radojewski, MD, Arsany Hakim, MD, Johannes Kaesmacher, MD, PhD, Thomas R. Meinel, MD, PhD, Leander Clénin, MMed, Mattia Branca, PhD, Davide Strambo, MD, Tim Fischer, MD, Friedrich Medlin, MD, Nils Peters, MD, Emmanuel Carrera, MD, Karl-Olof Lovblad, MD, Grzegorz M. Karwacki, MD, Carlo W. Cereda, MD, Julien Niederhauser, MD, Marie-Luise Mono, MD, Achim Mueller, MD, Susanne Wegener, MD, Sabine Sartoretti, MD, Alexandros A. Polymeris, MD, PhD, Valerian Altersberger, MD, Mira Katan, MD, Marios Psychogios, MD, Rolf Sturzenegger, MD, Claude Nauer, MD, Michael Schaerer, MD, Carlos Buitrago Tellez, MD, Susanne Renaud, Katharina Minkner Klahre, Werner J. Z'Graggen, MD, David Bervini, Leo H. Bonati, MD, Roland Wiest, MD, Marcel Arnold, MD, Robert J. Simister, PhD, Duncan Wilson, MD, PhD, Hans Rolf Jäger, MD, Urs Fischer, MD,\* David J. Werring, MD, PhD,\* and David J. Seiffge, MD,\* for Swiss Stroke Registry Investigators and SIGNAL Investigators

### Correspondence

Dr. Seiffge  
david.seiffge@insel.ch

*Neurology*® 2024;102:e207977. doi:10.1212/WNL.0000000000207977

## Abstract

### Background and Objectives

Cerebral small vessel disease (SVD) is the major cause of intracerebral hemorrhage (ICH). There is no comprehensive, easily applicable classification of ICH subtypes according to the presumed underlying SVD using MRI. We developed an MRI-based classification for SVD-related ICH.

### Methods

We performed a retrospective study in the prospectively collected Swiss Stroke Registry (SSR, 2013–2019) and the Stroke InvestiGation in North And central London (SIGNAL) cohort. Patients with nontraumatic, SVD-related ICH and available MRI within 3 months were classified as Cerebral Amyloid angiopathy (CAA), Deep perforator arteriopathy (DPA), Mixed CAA-DPA, or Undetermined SVD using hemorrhagic and nonhemorrhagic MRI markers (CADMUS classification). The primary outcome was inter-rater reliability using Gwet's AC1. Secondary outcomes were recurrent ICH/ischemic stroke at 3 months according to the CADMUS phenotype. We performed Firth penalized logistic regressions and competing risk analyses.

### Results

The SSR cohort included 1,180 patients (median age [interquartile range] 73 [62–80] years, baseline NIH Stroke Scale 6 [2–12], 45.6% lobar hematoma, systolic blood pressure on

\*These authors contributed equally to this work as co-senior authors.

From the Departments of Neurology (M.B.G., M.M., B.M.S., T.R.M., L.C., M.A., U.F., D.J.S., W.J.Z.G.) and Neurosurgery (D.B., W.J.Z.G.), and the University Institute for Diagnostic and Interventional Neuroradiology (W.V., P.R., A.H., J.K., R.W.), Inselspital Bern University Hospital and University of Bern; Graduate School for Health Sciences (M.B.G., B.M.S.) and CTU Bern (M.B.), University of Bern, Switzerland; Stroke Research Centre (M.B.G., W.Z., H.O., M.L., Y.D., D.J.W.), University College London Queen Square Institute of Neurology, United Kingdom; Service of Neurology (D.S.), Department of Clinical Neurosciences, Lausanne University Hospital and University of Lausanne; Department of Radiology (T.F.), Cantonal Hospital St. Gallen; Department of Internal Medicine (F.M.), Stroke Unit and Division of Neurology, HFR Fribourg–Cantonal Hospital; Stroke Center Hirslanden (N.P.), Klinik Hirslanden Zurich; Stroke Research Group (E.C.), Department of Clinical Neurosciences, University Hospital and Faculty of Medicine, Geneva; Department of Radiology and Medical Informatics (K.-O.L.), University of Geneva; Department of Radiology and Nuclear Medicine (G.M.K.), Luzerner Kantonsspital; Stroke Center EOC (C.W.C.), Neurocenter of Southern Switzerland; Stroke Unit (J.N.), GHOL, Hôpital de zone de Nyon; Stadtspitaler Triemli und Waid (M.-L.M.), Zurich; Department of Neurology (A.M., S.W.), University Hospital and University of Zurich; Department of Radiology and Nuclear Medicine (S.S.), Kantonsspital Winterthur; Department of Neurology and Stroke Center (A.A.P., V.A., M.K., U.F., L.H.B.) and Center for Rehabilitation Rheinfelden (L.H.B.), University Hospital Basel and University of Basel; Diagnostic and Interventional Neuroradiology (M.P.), Department of Radiology and Nuclear Medicine, University Hospital Basel; Department of Neurology (R.S.), Kantonsspital Graubünden, Chur; Department of Radiology/Neuroradiology (C.N.), Kantonsspital Graubünden, Chur; Department of Neurology (M.S.), and Department of Radiology (C.B.T.), Buergerspital Solothurn; Division of Neurology (S.R.), Pourtalès Hospital, Neuchâtel; Department of Radiology (K.M.K.), Réseau Hospitalier Neuchâtelois, Switzerland; Comprehensive Stroke Service (R.J.S., D.J.W.) and Neuroradiological Academic Unit (H.R.J.), Department of Brain Repair & Rehabilitation, University College London Hospital, United Kingdom; and New Zealand Brain Research Institute (D.W.), Christchurch.

Go to [Neurology.org/N](https://www.neurology.org/N) for full disclosures. Funding information and disclosures deemed relevant by the authors, if any, are provided at the end of the article.

The Article Processing Charge was funded by the authors.

Coinvestigators are listed at [links.lww.com/WNL/D247](https://links.lww.com/WNL/D247).

This is an open access article distributed under the terms of the Creative Commons Attribution-NonCommercial-NoDerivatives License 4.0 (CC BY-NC-ND), which permits downloading and sharing the work provided it is properly cited. The work cannot be changed in any way or used commercially without permission from the journal.

## Glossary

CAA = cerebral amyloid angiopathy; CADMUS = CAA, Arteriosclerosis/DPA, Mixed CAA-DPA SVD, Undetermined SVD; CHARTS = Cerebral Hemorrhage Anatomic Rating Scale; DPA = deep perforator arteriopathy; GCS = Glasgow Coma Scale; ICH = intracerebral hemorrhage; IQR = interquartile range; MARS = Microbleed Anatomical Rating Scale; NIHSS = NIH Stroke Scale; OR = odds ratio; SIGNAL = Stroke InvestiGation in North And central London; SSR = Swiss Stroke Registry; SVD = small vessel disease; UCLH = University College London Hospitals; WMH = white matter hyperintensity.

admission 166 [145–185] mm Hg). The CADMUS phenotypes were as follows: mixed CAA-DPA (n = 751 patients, 63.6%), undetermined SVD (n = 203, 17.2%), CAA (n = 154, 13.1%), and DPA (n = 72, 6.3%), with a similar distribution in the SIGNAL cohort (n = 313). Inter-rater reliability was good (Gwet's AC1 for SSR/SIGNAL 0.69/0.74). During follow-up, 56 patients had 57 events (28 ICH, 29 ischemic strokes). Three-month event rates were comparable between the CADMUS phenotypes.

## Discussion

CADMUS, a novel MRI-based classification for SVD-associated ICH, is feasible and reproducible and may improve the classification of ICH subtypes in clinical practice and research.

## Introduction

Sporadic cerebral small vessel disease (SVD), including cerebral amyloid angiopathy (CAA) or deep perforator arteriosclerotic arteriopathy (DPA) is the most frequent cause of nontraumatic intracerebral hemorrhage (ICH) and accounts for approximately 80% of cases.<sup>1–3</sup> More than 50% of patients with ICH survive 1 year or longer<sup>4</sup> and face the risk of recurrent ICH and ischemic stroke. Individual risks of outcome events are believed to be related to the underlying SVD type, but data are scarce.<sup>4,5</sup> Recent studies used hematoma location as a surrogate for the underlying SVD type,<sup>6–8</sup> but both CAA and DPA can cause lobar ICH, and different SVD may often coexist in older people.<sup>9–11</sup>

ICH is a complex disease likely resulting from a combination of chronic arteriopathy (e.g., CAA/DPA) leading to higher vessel vulnerability and rupture in response to various forms of acute stress, for example, blood pressure variation.<sup>12,13</sup> Currently available classification systems are often based on single-center data, use a hierarchical approach (SMASH-U<sup>14</sup>), are rather complex for routine clinical use (CLAS-ICH,<sup>15</sup> H-ATOMIC<sup>16,17</sup>), and none require MRI—the reference standard for in vivo SVD diagnosis. Furthermore, these classifications include risk factors (which are not a reliable guide to the presence or type of SVD) and causes of ICH.<sup>14,16</sup> There is no widely accepted classification for ICH related to SVD. Studies using hematoma location as a surrogate for CAA or DPA have shown differences in long-term prognosis,<sup>6,7</sup> suggesting implications for secondary prevention. Although hematoma location is associated with the underlying SVD, conclusions are limited because lobar hemorrhage may be caused by CAA and DPA (or both)<sup>18</sup> while patients with deep ICH resulting from DPA may have concomitant CAA pathology<sup>9</sup> or macrovascular causes<sup>19</sup> on postmortem histopathology studies, with potential prognostic relevance.

MRI is the reference standard for noninvasive SVD detection and characterization<sup>2,20</sup> using various hemorrhagic and non-hemorrhagic lesions.<sup>13</sup> However, clearly defined neuroimaging criteria are only available for CAA (Boston criteria 2.0<sup>21</sup>) but not for other SVDs, including DPA or “mixed” CAA-DPA.

A comprehensive and easily applicable ICH classification system focusing on the likely underlying SVD pathology rather than vascular risk factors, using reference-standard MRI and well-defined criteria for the entire spectrum of SVD phenotypes, may be helpful for research and clinical practice. An MRI-based classification seems most suitable for survivors of ICH or patients enrolled in research projects where exact phenotyping and long-term outcome prognostication are warranted. Owing to the limited availability of MRI, such classification is not designed for unselected patients with ICH unlikely to undergo MRI, that is, patients with ICH in poor neurologic conditions likely to die of their index ICH. In these patients, long-term prognostication seems less relevant.

We therefore aimed to (1) develop a clinically useful, noninvasive classification for ICH subtypes according to their MRI SVD phenotype, (2) apply the classification in a broad sample of patients with ICH, and (3) determine the association of SVD phenotype with clinical outcome events. We sought a practical classification that accounts for the concomitant presence of the 2 main SVDs, CAA and DPA, including their combination.

## Methods

### Study Design

We derived a novel MRI-based classification system and applied it to 2 independent cohorts of patients: the prospective multicenter Swiss Stroke Registry (SSR) and the prospective

Stroke InvestiGation in North And central London (SIGNAL) cohort from University College London Hospitals (UCLH).

## Derivation of the MRI SVD Phenotype Classification

We (M.B.G., D.W., D.J.W., D.J.S.) reviewed available literature on MRI markers of SVD in patients with ICH.<sup>13</sup> Based on this preexisting evidence, we derived a novel, 3-step classification system (Figure 1): First, we excluded ICH secondary to a macrovascular (e.g., arteriovenous malformation and aneurysm), structural (tumor), or other defined cause (e.g., endocarditis and hemorrhagic transformation, based on clinically appropriate investigations<sup>3,22</sup>) and cryptogenic ICH (defined as the absence of SVD markers apart from  $\leq 20$  basal ganglia or centrum semiovale perivascular spaces). Second, we determined the hematoma location (based on the Cerebral Hemorrhage Anatomic Rating Scale [CHARTS<sup>23</sup>]). Third, we determined the presence and severity of all known hemorrhagic and nonhemorrhagic MRI markers of SVD. Finally, we classified patients according to predefined criteria (Table 1) based on steps 2 (hematoma location) and 3 (MRI markers) into 1 of 4 mutually exclusive SVD phenotypes: CAA, Arteriosclerosis/DPA, Mixed CAA-DPA SVD, Undetermined SVD, resulting in the acronym CADMUS.

## Cohorts

### Swiss Stroke Registry Cohort

The first cohort comprised patients from the prospective, national SSR, a compulsory registry including all patients treated at one of the certified Swiss Stroke Units or Stroke Centers.<sup>24,25</sup> We included all consecutive adult patients with nontraumatic ICH between 2013 and 2019 who had undergone MRI within 3 months after the index ICH.

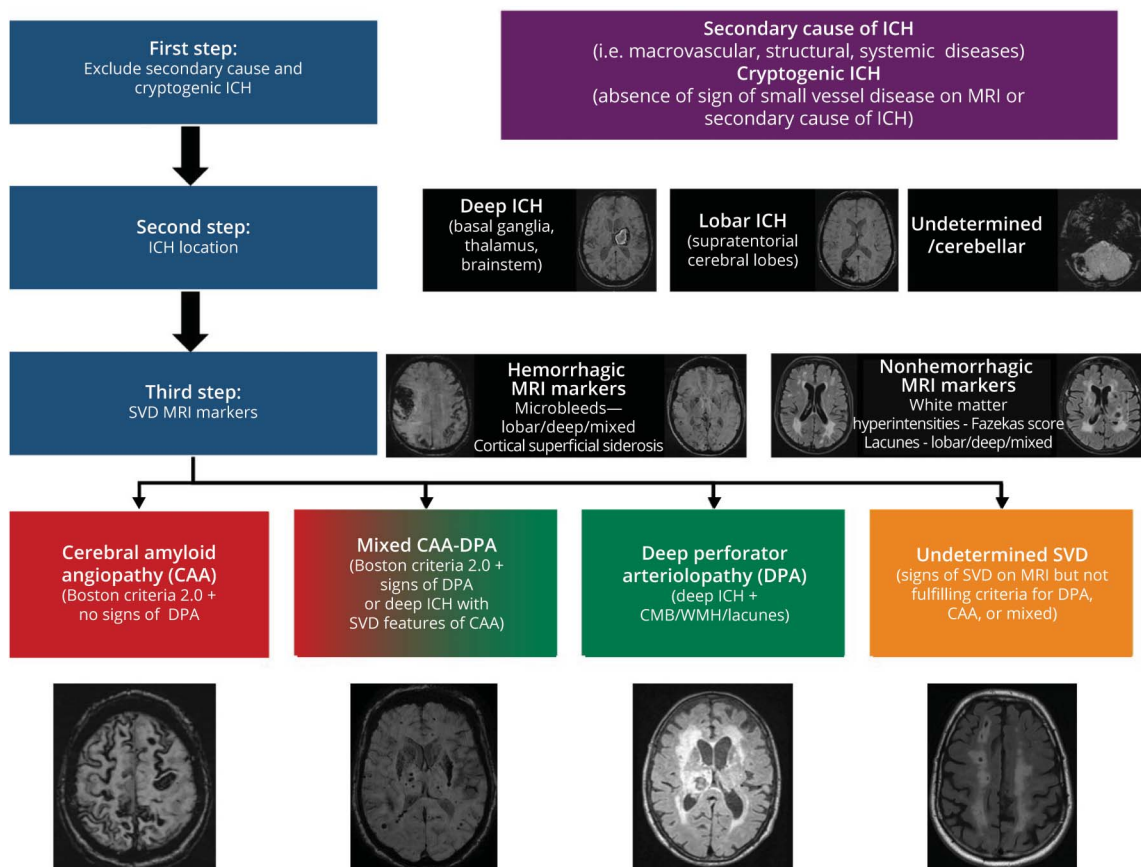
### SIGNAL Cohort

As a second external cohort, we used data from the SIGNAL cohort, a prospective stroke registry of consecutive patients admitted to the UCLH Hyperacute Stroke Unit with spontaneous ICH from a defined North Central London population. We included all patients with nontraumatic ICH between January 2015 and October 2021 who had undergone MRI up to 3 months after the index ICH.

### Clinical Registry Data

Local trained investigators collect clinical baseline data for all patients in both cohorts according to predefined variables. In the SSR, we extracted the following variables: age,

Figure 1 CADMUS SVD Classification



Steps to determine the SVD phenotype. CAA = cerebral amyloid angiopathy; CMB = cerebral microbleed; cSS = cortical superficial siderosis; DPA = deep perforator arteriopathy; SVD = small vessel disease; WMH = white matter hyperintensity.

**Table 1** SVD CADMUS Phenotype Criteria

	Main classification
<b>CAA</b>	Boston criteria 2.0 Supratentorial lobar ICH or nonaneurysmatic, cSAH AND ≥1 of the following: <ul style="list-style-type: none"> <li>• ≥1 additional, supratentorial lobar, cortical or subcortical hemorrhagic lesion (ICH, CMB, cSS/cSAH distant to the index ICH)</li> <li>• &gt;20 CSO-PVSs per hemisphere</li> <li>• Multispot white matter hyperintensity pattern</li> </ul>
<b>Mixed CAA-DPA</b>	Concomitant presence of characteristic features for CAA and DPA Deep supratentorial or brainstem ICH AND ≥1 of the following: <ul style="list-style-type: none"> <li>• ≥1 additional, supratentorial lobar, cortical or subcortical hemorrhagic lesion (ICH, CMB, cSS/cSAH distant to the index ICH)</li> <li>• &gt;20 CSO-PVSs per hemisphere</li> <li>• Multispot white matter hyperintensity pattern</li> </ul> OR Lobar supratentorial or nonaneurysmatic, cSAH AND ≥1 of the following: <ul style="list-style-type: none"> <li>• ≥1 additional, deep supratentorial or brainstem hemorrhagic lesion (ICH, CMB)</li> <li>• ≥1 deep supratentorial or brainstem lacune</li> <li>• Periventricular white matter lesions Fazekas grade ≥2</li> </ul> Additional SVD features can be present
<b>DPA</b>	Deep supratentorial or brainstem ICH AND ≥1 of the following: <ul style="list-style-type: none"> <li>• ≥1 additional, deep supratentorial or brainstem hemorrhagic lesion (ICH, CMB)</li> <li>• ≥1 deep supratentorial or brainstem lacune</li> <li>• Periventricular white matter lesions Fazekas grade ≥2</li> </ul> Additional SVD features can be present
<b>Undetermined SVD</b>	ICH of any location AND Signs of SVD not fulfilling the criteria for CAA, DPA or mixed CAA-DPA, e.g. ≥1 of the following: <ul style="list-style-type: none"> <li>• ≥1 lobar or cerebellar lacune</li> <li>• &gt;20 BG-PVS per hemisphere</li> <li>• Periventricular white matter lesions Fazekas grade 1 or any isolated, deep white matter lesions</li> <li>• Recent, small infarcts</li> </ul> OR Cerebellar or holo-hemispheric ICH or uncertain hematoma epicenter AND ≥1 of the following: <ul style="list-style-type: none"> <li>• ≥1 additional, deep supratentorial or brainstem hemorrhagic lesion (ICH, CMB)</li> <li>• ≥1 deep supratentorial or brainstem lacune</li> <li>• Periventricular white matter lesions Fazekas grade ≥2</li> <li>• ≥1 additional, supratentorial lobar, cortical or subcortical hemorrhagic lesion (ICH, CMB, cSS/cSAH distant to the index ICH)</li> </ul> Additional SVD features can be present

Abbreviations: BG = basal ganglia; CAA = cerebral amyloid angiopathy; CMB = cerebral microbleed; CSO = centrum semiovale; cSAH = convexity subarachnoid hemorrhage; cSS = cortical superficial siderosis; DPA = deep perforator arteriopathy; ICH = intracerebral hemorrhage; PVS = perivascular space; SVD = small vessel disease.

sex, cerebrovascular risk factors (hypertension, diabetes, hyperlipidemia, defined as previously known or diagnosed during hospitalization based on suggestive clinical findings, smoking, atrial fibrillation), history of previous cerebrovascular events, antithrombotic therapy on admission, clinical findings on admission (systolic and diastolic blood pressure, NIH Stroke Scale [NIHSS], Glasgow Coma Scale [GCS]), clinical outcomes (including ischemic stroke, intracerebral hemorrhage, or death). Etiology of ICH was classified according to a modified version of the SMASH-U classification by local raters.<sup>24</sup> In the SIGNAL cohort, we extracted demographic data (age and sex).

## MRI Analysis

Pseudonymized DICOMs were stored on a local server at the respective central imaging core laboratory (Bern for SSR and London for SIGNAL). We included all MRI scans performed as part of routine clinical care within 90 days after the index ICH that fulfilled minimum imaging requirements (availability of SWI or GRE-T2\* and T2-weighted or fluid-attenuated inversion recovery, see eTable 1, [links.lww.com/WNL/D248](https://links.lww.com/WNL/D248) for an overview of protocols according to centers for the SSR).

MRI analysis was performed by trained raters (M.B.G. for SSR, W.Z. for SIGNAL) blinded to outcomes at the time assessing



MRI scans. The analysis was supervised by 2 independent raters at each center (A.H., D.J.S., D.J.W., R.J.) to resolve unclear cases by consensus. The analysis followed the neuroimaging standards for research into SVD.<sup>20</sup> We determined the hematoma epicenter using CHARTS.<sup>23</sup> Cerebral microbleed location and count were assessed using the Microbleed Anatomical Rating Scale (MARS).<sup>26</sup> We evaluated cortical superficial siderosis distribution (focal vs disseminated) and multifocality.<sup>27,28</sup> In the absence of a validated rating for lacunes and recent small infarcts, we used the MARS classification to assess their location and count as done in previous research.<sup>26,29</sup> White matter hyperintensity (WMH) severity was assessed using the Fazekas scale<sup>30</sup> and WMH pattern.<sup>31</sup> Enlarged perivascular spaces were assessed using a 5-point scale.<sup>32</sup>

A second rater (D.J.S. for SSR, M.B.G. for SIGNAL) determined inter-rater reliability in a subset of 50 patients from the SSR (4.2%) and 44 patients from the SIGNAL cohort (14.1%) by a blinded review of source MRI and independent application of the CADMUS classification.

### Follow-up and Clinical Outcomes

All patients in the SSR receive standardized clinical 3-month follow-up by local investigators, including information on recurrent ICH, ischemic stroke, or death at 3 months after the index ICH.

### Statistical Analysis

Statistical analysis was performed by M.B.G. using STATA/MP 16.0 (StataCorp., College Station, TX) based on a prespecified statistical analysis plan developed by M.B.G., M.B., and D.J.S. We performed descriptive statistics using the `table1_mc` package and reported the findings using absolute and relative counts for categorical variables, median and interquartile range (IQR) for non-normally distributed, continuous variables and mean and standard deviation for normally distributed, continuous variables.<sup>33</sup> The significance level was set at  $\alpha < 0.05$ .

Inter-rater reliabilities for the CADMUS phenotype were assessed using Gwet's AC1. Comparison between the SMASH-U classification (local rater) and the CADMUS classification (central rater) was displayed using a Sankey diagram. We compared demographic variables and prevalence of CADMUS phenotypes in the 2 cohorts.

Nonadjusted event rates were reported according to the CADMUS phenotype with corresponding 95% CIs. We assessed the association of CADMUS phenotypes with the coprimary outcomes using Firth penalized regression analysis to account for the small number of outcome events, using listwise deletion. Regression models were specified before the statistical analysis. We selected up to 4 covariables based on clinical plausibility and findings from previous studies (adhering to the 1:10 rule of thumb, ~40 expected events per outcome).<sup>7,24</sup> To determine the association of SVD phenotypes with ischemic stroke at 3 months, we corrected for age, arterial hypertension, and atrial fibrillation while we adjusted

for age, arterial hypertension, and history of previous ICH in the model for recurrent ICH. We reported odds ratios (ORs) and 95% CIs in logistic regression analyses, using the largest subgroup as the reference, and subhazard ratios in cumulative incidence analysis according to Fine and Gray (competing outcomes for ICH: ischemic stroke and death, competing outcomes for ischemic stroke: ICH and death).

We performed 2 post hoc sensitivity analyses in the derivation cohort including only patients with first-ever ICH or who underwent MRI within 7 days after their ICH, respectively, using the same methods and regression models as in the primary analysis.

To further investigate the largest group of mixed CAA-DPA, we performed a post hoc sensitivity analysis according to whether these patients fulfill the Boston criteria 2.0.<sup>21</sup> This is of particular interest because the Boston criteria 2.0 consider deep hemorrhagic lesions as an exclusion criterion for the diagnosis of CAA, which is not the case for deep ischemic lesions (e.g., lacunes) or WMHs.<sup>21</sup>

### Standard Protocol Approvals, Registrations, and Patient Consents

Enrollment in the SSR is compulsory for all patients with cerebrovascular events according to Swiss law on highly specialized medicine, and patients are informed accordingly. Patients who denied the use of their data for research were excluded from the analyses. The competent ethical boards in Bern and London, respectively, reviewed and approved the use of these data for this study (SSR Project ID: 2019-00689, SIGNAL: 5-201920-SE).

## Results

Of 3,572 patients with ICH enrolled in the SSR, MRI was available in 1,439 patients (40.3%). In 212 patients (14.7%), ICH was due to a secondary cause. Forty-seven patients (3.3%) had cryptogenic ICH, resulting in 1,180 patients (82%) eligible for this study. In the SIGNAL cohort, MRI was available for 361 of 852 patients (42.4%), 39 (10.8%) had secondary ICH, and 9 (2.5%) had cryptogenic ICH (eFigure 1, [links.lww.com/WNL/D248](https://links.lww.com/WNL/D248)). Baseline characteristics of patients with vs without MRI in the SSR are presented in eTable 2.

### Baseline Data and Demographics

Among the 1,180 patients from the SSR, the median age was 73 years (IQR 62–80) and 44.5% of patients were female. Patients from the SIGNAL cohort were younger (median 68 years, IQR 57–78) and with a similar gender distribution (44.1% female). Baseline characteristics are summarized in Table 2 and eTable 3 ([links.lww.com/WNL/D248](https://links.lww.com/WNL/D248)). Probable CAA according to the Boston criteria 2.0<sup>21</sup> was present in 338 of 1,180 patients from the SSR (28.6%) and 52 of 313 patients from the SIGNAL cohort (16.6%). 823 of 1,180 patients (69.7%) from the SSR and 247 of 313 (78.9%) from the SIGNAL cohort had neuroimaging markers of DPA.

## CADMUS Phenotype Distribution and Inter-Rater Reliability

All patients were classified into one of the mutually exclusive groups. The most frequent CADMUS phenotype was mixed CAA-DPA (SSR: 751 patients, 63.3%; SIGNAL: 214 patients, 68.4%), followed by undetermined SVD (SSR: 203 patients, 17.2%; SIGNAL: 53 patients, 16.9%). DPA without SVD markers consistent with CAA was present in 72 patients (6.3%) from the SSR and 33 patients (10.5%) from the SIGNAL cohort; probable CAA without any evidence of (hemorrhagic or ischemic) lesions suggestive of DPA was present in 154 patients (13.1%) from the SSR and 13 (4.2%) from the SIGNAL cohort (eFigure 1, [links.lww.com/WNL/D248](https://links.lww.com/WNL/D248)). Baseline characteristics differed significantly between subgroups regarding age, hypertension, admission blood pressure, and admission NIHSS (Table 2 and eFigure 2). An overview of SVD markers according to the CADMUS phenotype is provided in eTable 4.

Findings in the subgroups restricted to patients with first-ever ICH and MRI within 7 days were comparable (eTable 5, [links.lww.com/WNL/D248](https://links.lww.com/WNL/D248)). The 2 raters agreed on the CADMUS phenotype in 38 of 50 evaluated cases from the SSR and in 35 of 44 evaluated cases from the SIGNAL cohort, resulting in a Gwet's AC1 inter-rater reliability of 0.69 (95% CI 0.53–0.85) for the SSR and 0.74 (95% CI 0.58–0.90) for the SIGNAL cohort.

## Comparison With the SMASH-U Classification

Agreement between SMASH-U and CADMUS was achieved in 144 of 1,180 patients (12.2%). 32 of 154 patients (20.8%) with CAA as defined according to the Boston criteria 2.0<sup>21</sup> and without additional signs of DPA were classified as CAA using SMASH-U. Figure 2 compares the SMASH-U and CADMUS phenotypes.

## Clinical Outcomes

Follow-up data were available for 1,113 of 1,180 patients from the SSR (follow-up rate 94.3%). Patients who were lost to follow-up were older (median age 76 years vs 73 years,  $p = 0.046$ ), but otherwise similar to patients with available outcomes. Fifty-six patients (5.0%) suffered 57 events during follow-up. Ischemic strokes occurred in 29 patients (2.8%) and recurrent ICH in 28 patients (2.5%) (Table 2).

In the univariable, penalized logistic regression, female sex, CAA, and previous intracranial hemorrhage were independently associated with recurrent ICH at 3 months. Anticoagulation and higher GCS on admission were associated with ischemic strokes within 3 months (eTable 6, [links.lww.com/WNL/D248](https://links.lww.com/WNL/D248)). None of the CADMUS phenotypes were independently associated with 3-month outcomes.

## Competing Risk Analysis

In the competing risk analysis over an observation period of 347.4 patient-years using the same models as for penalized logistic regression, we observed a trend toward a lower

subhazard ratio of ischemic stroke in CAA (SHR 0.34; 95% CI 0.04–2.69). DPA was independently associated with a lower risk of recurrent ICH (SHR  $7.06 \times 10^{-7}$ ; 95% CI  $3.94 \times 10^{-7}$  to  $1.03 \times 10^{-6}$ ) as compared with mixed CAA-DPA. For Nelson-Aalen curves, see Figure 3, A and B.

## Sensitivity Analyses

Baseline data in the populations restricted to patients with first-ever ICH and MRI within 7 days were comparable with the total population (eTable 5, [links.lww.com/WNL/D248](https://links.lww.com/WNL/D248)). In patients with first-ever ICH, CAA was independently associated with recurrent ICH (adjusted OR 4.47, 95% CI 1.54–12.97). Patients with mixed CAA-DPA who fulfilled the Boston criteria 2.0 (Boston-positive) were significantly older, more often had a history of ICH, and had a higher prevalence of antiplatelet therapy (eTable 7). On admission, blood pressure was significantly lower in Boston-positive mixed CAA-DPA. There were no significant differences in recurrence risks (eFigure 3).

## Discussion

We present a novel MRI-based classification of SVD in ICH, which we applied to a large, multicenter cohort of patients treated at Swiss Stroke Units or Stroke Centers and the prospective SIGNAL cohort study in London, United Kingdom.

The CADMUS classification provides reproducible definitions for all observed CADMUS phenotypes, including the Boston criteria 2.0 for CAA<sup>34</sup> in addition to other validated neuroimaging markers associated with the respective SVD phenotypes.<sup>13</sup> Because there is no gold standard for in vivo diagnosis of different SVD subtypes, our classification applied the best available surrogate by using MRI as the most reliable imaging modality to detect markers of SVD. The validation in 2 ICH cohorts with MRI from clinical routine care including around 1,500 patients with MRI is a strong argument for clinical usability. It overcomes the limitations of previous studies with a hierarchical, single-cause approach<sup>14</sup> or a complex rating system accounting for several concomitant etiologies.<sup>15,16</sup> Inter-rater reliability in our study was comparable with the H-ATOMIC study ( $\kappa = 0.76$ ) and slightly lower than the original study on the SMASH-U classification ( $\kappa = 0.82$ ).<sup>35</sup>

The MRI-based CADMUS classification provides patient groups with distinct clinical characteristics, risk factor profiles, and diverging risks of recurrent ICH and ischemic stroke at 3 months. While neuroimaging features of CAA were present in 1,162 of 1,493 patients (77.8%), only 26.1% had probable CAA according to the revised Boston criteria 2.0,<sup>21</sup> underlining the potential limited sensitivity of these criteria. In 64.6% of ICH cases, neuroimaging features for CAA and DPA both were present, resulting in a mixed CAA-DPA phenotype. The proportion of patients with mixed CAA-DPA is higher than in studies evaluating only single SVD markers, for example, CMBs<sup>36,37</sup> or lacunes,<sup>29</sup> which we expected based on

**Table 2** Baseline Table

	All ICH					p Value
	Total (N = 1,180, 100%)	CAA (N = 154, 13.1%)	DPA (N = 72, 6.3%)	Mixed CAA-DPA (N = 751, 63.6%)	Undetermined (N = 203, 17.2%)	
<b>Demographics</b>						
Age, y, median (IQR)	73 (62–80)	73 (65–79)	72 (61–79)	74 (64–80)	68 (56–78)	<0.001
Sex, female, n (%)	492 (44.5)	69 (49.6)	24 (35.3)	323 (45.4)	76 (40.9)	0.17
<b>Cerebrovascular risk factors, n (%)</b>						
Hypertension	797 (76.9)	80 (62.5)	54 (79.4)	529 (79.4)	134 (76.6)	<0.001
Diabetes mellitus	160 (16.4)	16 (13.8)	10 (15.9)	109 (17.0)	25 (15.7)	0.84
Hyperlipidemia (treatment or LDL >2.6 mmol/L)	500 (50.9)	55 (46.2)	35 (55.6)	336 (52.7)	74 (45.4)	0.22
Actively smoking (or stopped <2 y ago)	129 (14.6)	16 (15.0)	3 (5.6)	83 (14.6)	27 (17.9)	0.18
Atrial fibrillation (>1 documented episode)	148 (14.3)	18 (14.2)	13 (19.1)	96 (14.5)	21 (12.1)	0.57
History of intracranial hemorrhage	118 (11.4)	17 (13.4)	3 (4.4)	83 (12.5)	15 (8.6)	0.12
History of ischemic stroke or retinal infarction	110 (10.6)	10 (7.9)	8 (11.8)	69 (10.4)	23 (13.1)	0.52
Antiplatelets on admission	295 (27.8)	39 (29.3)	17 (25.4)	197 (28.6)	42 (24.0)	0.60
Anticoagulation on admission	184 (17.2)	22 (16.4)	11 (16.2)	118 (17.1)	33 (18.6)	0.95
<b>Clinical presentation on admission</b>						
Systolic blood pressure on admission, median (IQR)	166 (145–185)	153 (138–170.5)	177 (160–190)	168 (147–189)	165 (140–183)	<0.001
Diastolic blood pressure on admission, median (IQR)	89 (78–101)	83 (70–90)	92 (84–110)	90 (80–104)	90 (78–104)	<0.001
NIHSS on admission, median (IQR)	6 (2–12)	4 (1–11)	9 (5–14)	6 (3–12)	4.5 (1–11.5)	<0.001
GCS on admission, median (IQR)	15 (14–15)	15 (14–15)	15 (14–15)	15 (14–15)	15 (13–15)	0.57
<b>Hematoma epicenter, n (%)</b>						<0.001
Deep	439 (37.2)	0 (0.0)	65 (90.3)	347 (46.2)	27 (13.3)	
Lobar	538 (45.6)	139 (90.3)	0 (0.0)	362 (48.2)	37 (18.2)	
Brainstem	40 (3.4)	0 (0.0)	7 (9.7)	28 (3.7)	5 (2.5)	
Cerebellum	73 (6.2)	0 (0.0)	0 (0.0)	0 (0.0)	73 (36.0)	
Isolated IVH	11 (0.9)	0 (0.0)	0 (0.0)	0 (0.0)	11 (5.4)	
Isolated cSAH	33 (2.8)	15 (9.7)	0 (0.0)	14 (1.9)	4 (2.0)	
Undetermined	46 (3.9)	0 (0.0)	0 (0.0)	0 (0.0)	46 (22.7)	
<b>SMASH-U, n (%)</b>						<0.001
Hypertension	538 (45.6)	23 (14.9)	54 (75.0)	365 (48.6)	96 (47.3)	
Antithrombotic	68 (5.8)	12 (7.8)	1 (1.4)	47 (6.3)	8 (3.9)	
CAA	152 (12.9)	32 (20.8)	0 (0.0)	105 (14.0)	15 (7.4)	
Unknown	290 (24.6)	63 (40.9)	14 (19.4)	155 (20.6)	58 (28.6)	
Missing information	132 (11.2)	24 (15.6)	3 (4.2)	79 (10.5)	26 (12.8)	

Continued

**Table 2** Baseline Table (continued)

	All ICH					p Value
	Total (N = 1,180, 100%)	CAA (N = 154, 13.1%)	DPA (N = 72, 6.3%)	Mixed CAA-DPA (N = 751, 63.6%)	Undetermined (N = 203, 17.2%)	
<b>Outcomes (per 100 patient-years), median (IQR)</b>						
<b>Any event</b>	58.5 (50.0–68.6)	51.3 (32.3–81.3)	57.4 (29.9–110.3)	52.40 (42.6–64.5)	89.6 (65.2–123.1)	
<b>Ischemic stroke</b>	11.0 (7.7–15.9)	2.9 (0.4–20.2)	12.8 (3.2–51.0)	10.0 (6.2–16.1)	21.2 (11.0–40.8)	
<b>ICH</b>	10.6 (7.3–15.4)	17.1 (7.7–38.0)	0	8.8 (5.3–14.6)	16.5 (7.9–34.6)	
<b>Death</b>	43.71 (36.4–52.5)	39.9 (23.6–67.3)	44.6 (21.3–93.7)	39.4 (31.0–50.1)	63.6 (43.6–92.8)	

Abbreviations: CAA = cerebral amyloid angiopathy; cSAH = convexity subarachnoid hemorrhage; DPA = deep perforator arteriopathy; DOAC = direct oral anticoagulant; GCS = Glasgow Coma Scale; ICH = intracerebral hemorrhage; IQR = interquartile range; IVH = intraventricular hemorrhage; LDL = low-density lipoprotein; NIHSS = NIH Stroke Scale; SVD = small vessel disease.

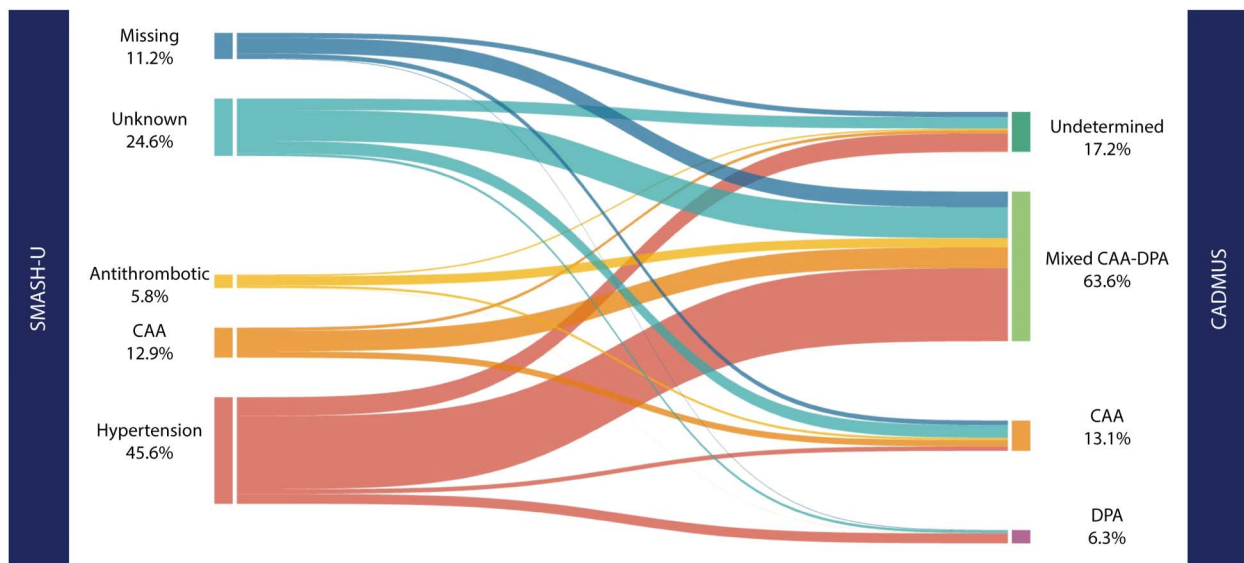
the different methodology. The CADMUS phenotypes were similarly distributed in both cohorts with the exception of CAA. The cause of this difference is unknown, although there are several potential contributors including population differences (the SIGNAL cohort is a multiethnic metropolitan population cohort while SSR covers all types of stroke hospitals in Switzerland) with differences in baseline characteristics or risk factor management (e.g., antihypertensive treatment regimens). However, these additional aspects were beyond the scope of this study.

Agreement with the clinically determined SMASH-U classification<sup>14</sup> was found in 12.2% of participants. This low proportion is likely related to differences in categories and the use of neuroimaging biomarkers in our classification, rather than

risk factors in SMASH-U. A substantial number of patients with mixed CAA-DPA were classified as CAA (according to the modified Boston criteria<sup>34</sup>) using SMASH-U, which might result from its hierarchical approach excluding potential concomitant diseases. Misclassification of this kind might lead to inappropriate therapies (e.g., reluctance toward antithrombotic therapy), with a risk of poorer patient outcomes. In particular, there is currently no evidence for withholding antithrombotic therapy in any patient group, if it was otherwise indicated.<sup>38</sup>

In a post hoc subanalysis splitting the mixed CAA-DPA group into Boston-positive and Boston-negative cases, we observed a numerically higher rate of ischemic events in patients with Boston-negative compared with Boston-positive mixed CAA-DPA while the rates of recurrent ICH were similar

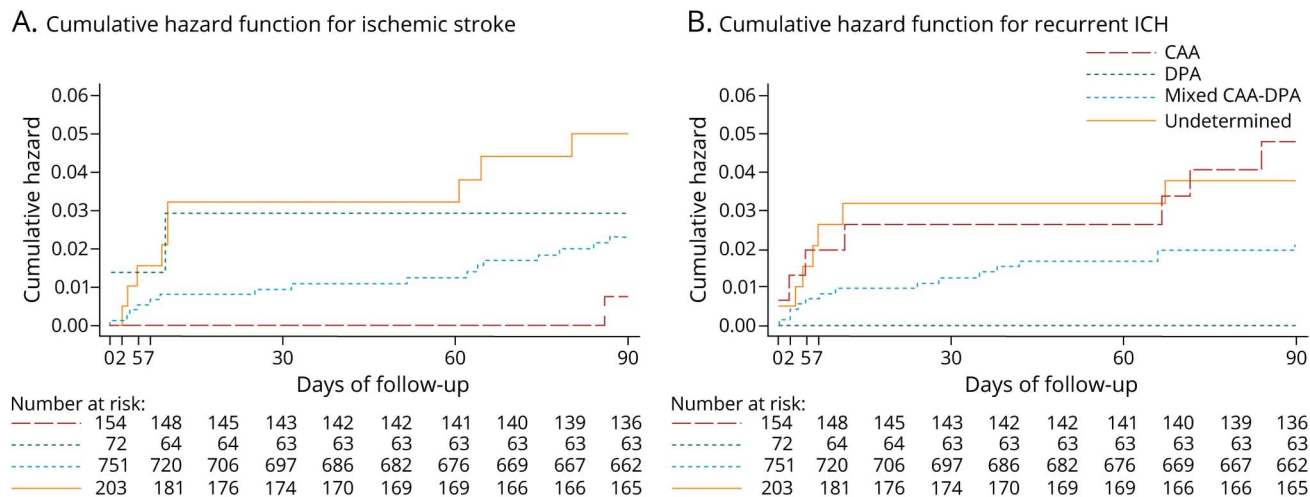
**Figure 2** Sankey Diagram Comparing SMASH-U and CADMUS Classification in the Swiss Stroke Registry



CAA = cerebral amyloid angiopathy; DPA = deep perforator arteriopathy; SVD = small vessel disease.



**Figure 3** Cumulative Hazards for Cerebrovascular Events at 3 Months



(A) Nelson-Aalen curves displaying cumulative hazard ratio for ischemic stroke at 3 months. (B) Nelson-Aalen curves displaying cumulative hazard ratio for recurrent ICH within 3 months. CAA = cerebral amyloid angiopathy; DPA = deep perforator arteriopathy; ICH = intracerebral hemorrhage.

in both subgroups (eTable 3, eFigure 3, [links.lww.com/WNL/D248](https://www.lww.com/WNL/D248)). Future studies should elaborate whether histopathologic findings in patients with Boston-negative CAA-DPA differ from those with Boston-positive CAA-DPA (e.g., regarding presence of vascular amyloid, as suggested in previous research<sup>9</sup>) and assess the long-term risks and benefits of antithrombotic therapy in this particular patient group.

Clinical characteristics of the CADMUS phenotypes in our classification differed significantly, arguing for the value of this classification to differentiate underlying pathomechanisms associated with ICH<sup>1</sup> and for research investigating targeted treatments. The observed differences are consistent with the current pathophysiologic concepts, including the importance of arterial hypertension for all types of ICH<sup>39</sup> and the high risk of recurrent ICH in CAA.<sup>40</sup>

While CAA was associated with recurrent ICH at 3 months in patients with first-ever ICH, the observation period of 3 months is probably too short to detect all but a very large difference in outcome event rates between the other CADMUS phenotypes, which we could not expect based on previous literature.<sup>6,7,24</sup> Long-term studies using ICH location as a surrogate for the SVD etiology reported differences in the risk of recurrent ICH and ischemic strokes.<sup>6,7</sup> These findings are a strong argument to investigate the prognostic performance of this classification in a cohort with longer follow-up, which might help to identify risk profiles and potentially relevant subgroups for preventive strategies.

This study has the following strengths. The classification is based on well-defined SVD markers<sup>20</sup> on MRI, which is the reference standard for in vivo detection of SVD. It is the first classification mandating MRI use, overcoming imprecisions in

prior classifications based on both CT imaging and MRI. All markers can be determined in a noncontrast MRI as part of the diagnostic routine workup in patients with ICH.<sup>2</sup> We provide detailed SVD neuroimaging criteria for all SVD phenotypes, resulting in a high reproducibility. Validation in an external cohort has revealed comparable distribution of phenotypes using clinically obtained MRI scans from different centers over several years with heterogeneous sequence parameters. Most of the SSR patients (62.2%) underwent MRI within 1 week after symptom onset. These are strong arguments for the generalizability and usability in clinical routine.

Our study has the following limitations: We only included patients who underwent MRI within 90 days after the index event. Patients with severe ICH were likely underrepresented. However, the CADMUS classification aims to provide the best possible classification of small vessel disease-related ICH. This information is of importance for survivors of ICH, where the risk of recurrence or subsequent treatment options is discussed. It is also of interest in research projects where MRI may be performed as part of the study to characterize patients with ICH. The information is of no relevance for patients in the hyperacute setting, in poor conditions, or likely to die of ICH who would not undergo MRI. All patients with ICH should undergo a basic comprehensive follow-up searching for macrovascular and non-SVD-related causes.<sup>13</sup> CADMUS was designed for the use in subacute/chronic patients with ICH where other causes—including suspicion of genetic SVD—have been eliminated.

CADMUS included only patients who underwent MRI within 3 months after the index ICH. All evaluated MRI scans were performed in clinical routine. Despite the different health care systems, both cohorts showed a similar prevalence of MRI,

suggesting that roughly 40% of all patients are deemed clinically suitable to undergo MRI within 3 months after an ICH. Owing to our stringent eligibility criteria, it is possible that we excluded patients who had undergone MRI recently before, but not after their ICH. Last but not the least, if CADMUS phenotyping proves to be prognostically relevant, this might prompt the use of MRI in the future.

The simplicity of this classification comes at the cost of omitting rare diseases that also lead to ICH (e.g., genetic SVD). However, it covers the great majority of ICH cases and may provide a foundation for further investigations. This classification is based on neuroimaging rather than clinical risk factors of SVD and ICH, but, nevertheless, allows us to determine the presumed CADMUS phenotype blinded to clinical information, making it potentially useful for clinical trials. Histopathologic validation of the type(s) of SVD present in our cohorts is lacking. This is a general problem in neurology because brain biopsy is potentially hazardous, and therefore, few data on this topic exist. However, for most markers, correlation with the underlying SVD has been shown in previous research.<sup>13</sup> As an exception, histopathology correlation for periventricular WMH is scarce, but periventricular venulopathy with concentric collagen deposition, resulting in vessel stenosis and occlusion, has been described.<sup>41</sup> We, therefore, included this marker based on clinical consensus as in previous classifications.<sup>15</sup> Information on treatment courses (e.g., secondary prevention after ICH) was not available, which might be an additional source of bias. Although this study was performed in a large, multicenter data set with 2 independent prospective cohorts, we urge caution in the interpretation of the results because our analysis was retrospective and thus prone to bias.

In conclusion, ICH can be classified into several CADMUS phenotypes, which are associated with different risk profiles and short-term outcomes. All patients with ICH have a considerable risk of recurrent cerebrovascular events. Therefore, targeted preventive strategies are paramount to improve the outcome for patients with ICH. Development of such therapies requires a clear understanding of the contribution of SVD pathologies leading to ICH.

### Study Funding

Young Talents in Clinical Research Grant 13/18, Swiss Academy of Medical Sciences and Bangerter-Rhyner-Foundation (protected research time grant to M.B. Goeldlin).

### Disclosure

M.B. Goeldlin: grants from the Swiss Academy of Medical Sciences/Bangerter-Rhyner-Foundation (for the submitted work), Swiss Stroke Society, European Stroke Organization, Mittelbauvereinigung der Universität Bern and Pfizer congress grant (outside the submitted work). B.M. Siepen: Bangerter-Rhyner Foundation/Swiss Academy of Medical Sciences (outside the submitted work). M. Branca is employed by CTU Bern, University of Bern, which has a staff

policy of not accepting honoraria or consultancy fees. However, CTU Bern is involved in design, conduct, or analysis of clinical studies funded by not-for-profit and for-profit organizations. In particular, pharmaceutical and medical device companies provide direct funding to some of these studies. For an up-to-date list of CTU Bern's conflicts of interest, see [ctu.unibe.ch/research/declaration\\_of\\_interest/index\\_eng.html](http://ctu.unibe.ch/research/declaration_of_interest/index_eng.html). S. Wegener received research funds by the Swiss National Science Foundation, the UZH Clinical research priority program (CRPP) stroke, the Swiss Heart foundation, the Zurich Neuroscience Center (ZNZ), Boehringer-Ingelheim (2016), speaker honoraria from Amgen (2018), Springer (2021), Teva Pharma (2021) and a consultancy fee from Bayer (2019) and Novartis (2021). U. Fischer: research support from Swiss National Science Foundation, Swiss Heart Foundation, Medtronic (BEYOND SWIFT, SWIFT DIRECT), Stryker, Rapid medical, Penumbra, Phenox (DISTAL), consultancies for Medtronic, Stryker, and CSL Behring (fees paid to institution), participation in an advisory board for Alexion/Portola and Boehringer Ingelheim (fees paid to institution). R.J. Simister is partly funded by the ULCH/UCL Biomedical Research Centre. D.J. Werring reports personal fees from Bayer, Portola, and Alnylam, outside the submitted work. D.J. Seiffge: advisory board for Bayer, Portola/Alexion, Bioxodes, and VamX and research grant from the Bangerter-Rhyner Foundation and Alexion/AstraZeneca. The other authors report no disclosures. Go to [Neurology.org/N](http://Neurology.org/N) for full disclosures.

### Publication History

Received by *Neurology* March 30, 2023. Accepted in final form October 4, 2023. Submitted and externally peer reviewed. The handling editor was Editor-in-Chief José Merino, MD, MPhil, FAAN.

### Appendix 1 Authors

Name	Location	Contribution
<b>Martina B. Goeldlin, MD</b>	Department of Neurology, Inselspital Bern University Hospital and University of Bern; Graduate School for Health Sciences, University of Bern, Switzerland; Stroke Research Centre, University College London Queen Square Institute of Neurology, United Kingdom	Drafting/revision of the manuscript for content, including medical writing for content; major role in the acquisition of data; study concept or design; analysis or interpretation of data
<b>Madlaine Mueller, MD</b>	Department of Neurology, Inselspital Bern University Hospital and University of Bern, Switzerland	Drafting/revision of the manuscript for content, including medical writing for content; major role in the acquisition of data
<b>Bernhard M. Siepen, MD</b>	Department of Neurology, Inselspital Bern University Hospital and University of Bern; Graduate School for Health Sciences, University of Bern, Switzerland	Drafting/revision of the manuscript for content, including medical writing for content
<b>Wenpeng Zhang, MSc</b>	Stroke Research Centre, University College London Queen Square Institute of Neurology, United Kingdom	Major role in the acquisition of data

## Appendix 1 (continued)

Name	Location	Contribution
<b>Hatice Ozkan, MPhil</b>	Stroke Research Centre, University College London Queen Square Institute of Neurology, United Kingdom	Drafting/revision of the manuscript for content, including medical writing for content; major role in the acquisition of data
<b>Martina Locatelli, MD</b>	Stroke Research Centre, University College London Queen Square Institute of Neurology, United Kingdom	Drafting/revision of the manuscript for content, including medical writing for content; major role in the acquisition of data
<b>Yang Du</b>	Stroke Research Centre, University College London Queen Square Institute of Neurology, United Kingdom	Drafting/revision of the manuscript for content, including medical writing for content; major role in the acquisition of data
<b>Waldo Valenzuela, PhD</b>	University Institute for Diagnostic and Interventional Neuroradiology, Inselspital Bern University Hospital and University of Bern, Switzerland	Drafting/revision of the manuscript for content, including medical writing for content
<b>Piotr Radojewski, MD</b>	University Institute for Diagnostic and Interventional Neuroradiology, Inselspital Bern University Hospital and University of Bern, Switzerland	Drafting/revision of the manuscript for content, including medical writing for content; major role in the acquisition of data
<b>Arsany Hakim, MD</b>	University Institute for Diagnostic and Interventional Neuroradiology, Inselspital Bern University Hospital and University of Bern, Switzerland	Drafting/revision of the manuscript for content, including medical writing for content; major role in the acquisition of data
<b>Johannes Kaesmacher, MD, PhD</b>	University Institute for Diagnostic and Interventional Neuroradiology, Inselspital Bern University Hospital and University of Bern, Switzerland	Drafting/revision of the manuscript for content, including medical writing for content
<b>Thomas R. Meinel, MD, PhD</b>	Department of Neurology, Inselspital Bern University Hospital and University of Bern, Switzerland	Drafting/revision of the manuscript for content, including medical writing for content
<b>Leander Clénin, MMed</b>	Department of Neurology, Inselspital Bern University Hospital and University of Bern, Switzerland	Drafting/revision of the manuscript for content, including medical writing for content; analysis or interpretation of data
<b>Mattia Branca, PhD</b>	CTU Bern, University of Bern, Switzerland	Drafting/revision of the manuscript for content, including medical writing for content; major role in the acquisition of data; analysis or interpretation of data
<b>Davide Strambo, MD</b>	Service of Neurology, Department of Clinical Neurosciences, Lausanne University Hospital and University of Lausanne, Switzerland	Drafting/revision of the manuscript for content, including medical writing for content; major role in the acquisition of data

## Appendix 1 (continued)

Name	Location	Contribution
<b>Tim Fischer, MD</b>	Department of Radiology, Cantonal Hospital St. Gallen, Switzerland	Drafting/revision of the manuscript for content, including medical writing for content; major role in the acquisition of data
<b>Friedrich Medlin, MD</b>	Department of Internal Medicine, Stroke Unit and Division of Neurology, HFR Fribourg–Cantonal Hospital, Switzerland	Drafting/revision of the manuscript for content, including medical writing for content; major role in the acquisition of data
<b>Nils Peters, MD</b>	Stroke Center Hirslanden, Klinik Hirslanden Zurich, Switzerland	Drafting/revision of the manuscript for content, including medical writing for content; major role in the acquisition of data
<b>Emmanuel Carrera, MD</b>	Stroke Research Group, Department of Clinical Neurosciences, University Hospital and Faculty of Medicine, Geneva, Switzerland	Drafting/revision of the manuscript for content, including medical writing for content; major role in the acquisition of data
<b>Karl-Olof Lovblad, MD</b>	Department of Radiology and Medical Informatics, University of Geneva, Switzerland	Major role in the acquisition of data
<b>Grzegorz M. Karwacki, MD</b>	Department of Radiology and Nuclear Medicine, Luzerner Kantonsspital, Switzerland	Drafting/revision of the manuscript for content, including medical writing for content; major role in the acquisition of data; study concept or design
<b>Carlo W. Cereda, MD</b>	Stroke Center EOC, Neurocenter of Southern Switzerland	Drafting/revision of the manuscript for content, including medical writing for content; major role in the acquisition of data; study concept or design
<b>Julien Niederhauser, MD</b>	Stroke Unit, GHOL, Hôpital de zone de Nyon, Switzerland	Drafting/revision of the manuscript for content, including medical writing for content; major role in the acquisition of data
<b>Marie-Luise Mono, MD</b>	Stadtspitäler Triemli und Waid, Zurich, Switzerland	Drafting/revision of the manuscript for content, including medical writing for content; major role in the acquisition of data
<b>Achim Mueller, MD</b>	Department of Neurology, University Hospital and University of Zurich, Switzerland	Drafting/revision of the manuscript for content, including medical writing for content; major role in the acquisition of data
<b>Susanne Wegener, MD</b>	Department of Neurology, University Hospital and University of Zurich, Switzerland	Drafting/revision of the manuscript for content, including medical writing for content; major role in the acquisition of data
<b>Sabine Sartoretti, MD</b>	Department of Radiology and Nuclear Medicine, Kantonsspital Winterthur, Switzerland	Drafting/revision of the manuscript for content, including medical writing for content; major role in the acquisition of data

Continued

## Appendix 1 (continued)

Name	Location	Contribution
<b>Alexandros A. Polymeris, MD, PhD</b>	Department of Neurology and Stroke Center, University Hospital Basel and University of Basel, Switzerland	Drafting/revision of the manuscript for content, including medical writing for content; major role in the acquisition of data
<b>Valerian Altersberger, MD</b>	Department of Neurology and Stroke Center, University Hospital Basel and University of Basel, Switzerland	Drafting/revision of the manuscript for content, including medical writing for content; major role in the acquisition of data; study concept or design
<b>Mira Katan, MD</b>	Department of Neurology and Stroke Center, University Hospital Basel and University of Basel, Switzerland	Drafting/revision of the manuscript for content, including medical writing for content; major role in the acquisition of data; study concept or design
<b>Marios Psychogios, MD</b>	Diagnostic and Interventional Neuroradiology, Department of Radiology and Nuclear Medicine, University Hospital Basel, Switzerland	Drafting/revision of the manuscript for content, including medical writing for content; major role in the acquisition of data
<b>Rolf Sturzenegger, MD</b>	Department of Neurology, Kantonsspital Graubünden, Chur, Switzerland	Drafting/revision of the manuscript for content, including medical writing for content
<b>Claude Nauer, MD</b>	Department of Radiology/Neuroradiology, Kantonsspital Graubünden, Chur, Switzerland	Drafting/revision of the manuscript for content, including medical writing for content
<b>Michael Schaerer, MD</b>	Department of Neurology, Buegerspital Solothurn, Switzerland	Drafting/revision of the manuscript for content, including medical writing for content; major role in the acquisition of data
<b>Carlos Buitrago Tellez, MD</b>	Department of Radiology, Buegerspital Solothurn, Switzerland	Drafting/revision of the manuscript for content, including medical writing for content; major role in the acquisition of data
<b>Susanne Renaud</b>	Division of Neurology, Pourtalès Hospital, Neuchâtel, Switzerland	Drafting/revision of the manuscript for content, including medical writing for content; major role in the acquisition of data
<b>Katharina Minkner Klahre</b>	Department of Radiology, Réseau Hospitalier Neuchâtelois, Switzerland	Drafting/revision of the manuscript for content, including medical writing for content
<b>Werner J. Z'Graggen, MD</b>	Departments of Neurology and Neurosurgery, Inselspital Bern University Hospital and University of Bern	Drafting/revision of the manuscript for content, including medical writing for content; major role in the acquisition of data
<b>David Bervini</b>	Department of Neurosurgery, Inselspital Bern University Hospital and University of Bern, Switzerland	Drafting/revision of the manuscript for content, including medical writing for content; major role in the acquisition of data; study concept or design

## Appendix 1 (continued)

Name	Location	Contribution
<b>Leo H. Bonati, MD</b>	Center for Rehabilitation Rheinfelden and Department of Neurology and Stroke Center, University Hospital Basel and University of Basel, Switzerland	Drafting/revision of the manuscript for content, including medical writing for content; major role in the acquisition of data; study concept or design
<b>Roland Wiest, MD</b>	University Institute for Diagnostic and Interventional Neuroradiology, Inselspital Bern University Hospital and University of Bern, Switzerland	Drafting/revision of the manuscript for content, including medical writing for content; major role in the acquisition of data; study concept or design
<b>Marcel Arnold, MD</b>	Department of Neurology, Inselspital Bern University Hospital and University of Bern, Switzerland	Drafting/revision of the manuscript for content, including medical writing for content; major role in the acquisition of data; study concept or design
<b>Robert J. Simister, PhD</b>	Comprehensive Stroke Service, University College London Hospital, United Kingdom	Drafting/revision of the manuscript for content, including medical writing for content; major role in the acquisition of data; study concept or design
<b>Duncan Wilson, MD, PhD</b>	New Zealand Brain Research Institute, Christchurch, Switzerland	Drafting/revision of the manuscript for content, including medical writing for content; major role in the acquisition of data; study concept or design
<b>Hans Rolf Jäger, MD</b>	Neuroradiological Academic Unit, Department of Brain Repair & Rehabilitation, University College London, United Kingdom	Drafting/revision of the manuscript for content, including medical writing for content; study concept or design
<b>Urs Fischer, MD</b>	Department of Neurology, Inselspital Bern University Hospital and University of Bern; Department of Neurology and Stroke Center, University Hospital Basel and University of Basel, Switzerland	Drafting/revision of the manuscript for content, including medical writing for content; major role in the acquisition of data; study concept or design; analysis or interpretation of data
<b>David J. Werring, MD, PhD</b>	Stroke Research Centre, University College London Queen Square Institute of Neurology; Comprehensive Stroke Service, University College London Hospital, United Kingdom	Drafting/revision of the manuscript for content, including medical writing for content; major role in the acquisition of data; study concept or design; analysis or interpretation of data
<b>David J. Seiffge, MD</b>	Department of Neurology, Inselspital Bern University Hospital and University of Bern, Switzerland	Drafting/revision of the manuscript for content, including medical writing for content; major role in the acquisition of data; study concept or design; analysis or interpretation of data



## Appendix 2 Coinvestigators

Coinvestigators are listed at [links.lww.com/WNL/D247](https://links.lww.com/WNL/D247).

### References

1. Pasi M, Cordonnier C. Clinical relevance of cerebral small vessel diseases. *Stroke*. 2020;51(1):47-53. doi:10.1161/STROKEAHA.119.024148
2. Hostettler IC, Seiffge DJ, Werring DJ. Intracerebral hemorrhage: an update on diagnosis and treatment. *Expert Rev Neurother*. 2019;19(7):679-694. doi:10.1080/14737175.2019.1623671
3. van Asch CJ, Velthuis BK, Rinkel GJ, et al. Diagnostic yield and accuracy of CT angiography, MR angiography, and digital subtraction angiography for detection of macrovascular causes of intracerebral haemorrhage: prospective, multicentre cohort study. *BMJ*. 2015;351:h5762. doi:10.1136/bmj.h5762
4. Poon MT, Fonville AF, Al-Shahi Salman R. Long-term prognosis after intracerebral haemorrhage: systematic review and meta-analysis. *J Neurol Neurosurg Psychiatry*. 2014;85(6):660-667. doi:10.1136/jnnp-2013-306476
5. Puy L, Pasi M, Rodrigues M, et al. Cerebral microbleeds: from depiction to interpretation. *J Neurol Neurosurg Psychiatry*. 2021;92(6):598-607. doi:10.1136/jnnp-2020-323951
6. Casolla B, Moulin S, Kyheng M, et al. Five-year risk of major ischemic and hemorrhagic events after intracerebral hemorrhage. *Stroke*. 2019;50(5):1100-1107. doi:10.1161/STROKEAHA.118.024449
7. Banerjee G, Wilson D, Ambler G, et al. Longer term stroke risk in intracerebral haemorrhage survivors. *J Neurol Neurosurg Psychiatry*. 2020;91(8):840-845. doi:10.1136/jnnp-2020-323079
8. Li L, Poon MTC, Samarasekera NE, et al. Risks of recurrent stroke and all serious vascular events after spontaneous intracerebral haemorrhage: pooled analyses of two population-based studies. *Lancet Neurol*. 2021;20(6):437-447. doi:10.1016/S1474-4422(21)00075-2
9. Rodrigues MA, Samarasekera N, Lerpiniere C, et al. The Edinburgh CT and genetic diagnostic criteria for lobar intracerebral haemorrhage associated with cerebral amyloid angiopathy: model development and diagnostic test accuracy study. *Lancet Neurol*. 2018;17(3):232-240. doi:10.1016/S1474-4422(18)30006-1
10. Guidoux C, Hauw JJ, Klein IF, et al. Amyloid angiopathy in brain hemorrhage: a postmortem neuropathological-magnetic resonance imaging study. *Cerebrovasc Dis*. 2018;45(3-4):124-131. doi:10.1159/000486554
11. Schreiber S, Wilisch-Neumann A, Schreiber F, et al. Invited review: the spectrum of age-related small vessel diseases: potential overlap and interactions of amyloid and nonamyloid vasculopathies. *Neuropathol Appl Neurobiol*. 2020;46(3):219-239. doi:10.1111/nan.12576
12. Wilson D, Charidimou A, Werring DJ. Advances in understanding spontaneous intracerebral hemorrhage: insights from neuroimaging. *Expert Rev Neurother*. 2014;14(6):661-678. doi:10.1586/14737175.2014.918506
13. Goeldin M, Stewart C, Radojewski P, Wiest R, Seiffge D, Werring DJ. Clinical neuroimaging in intracerebral haemorrhage related to cerebral small vessel disease: contemporary practice and emerging concepts. *Expert Rev Neurother*. 2022;22(7):579-594. doi:10.1080/14737175.2022.2104157
14. Meretoja A, Strbian D, Putaala J, et al. SMASH-U: a proposal for etiologic classification of intracerebral hemorrhage. *Stroke*. 2012;43(10):2592-2597. doi:10.1161/STROKEAHA.112.661603
15. Raposo N, Zanon Zotin MC, Seiffge DJ, et al. A causal classification system for intracerebral hemorrhage subtypes. *Ann Neurol*. 2023;93(1):16-28. doi:10.1002/ana.26519
16. Martí-Fàbregas J, Prats-Sánchez L, Martínez-Domeño A, et al. The H-ATOMIC criteria for the etiologic classification of patients with intracerebral hemorrhage. *PLoS One*. 2016;11(6):e0156992. doi:10.1371/journal.pone.0156992
17. Rannikmäe K, Woodfield R, Anderson CS, et al. Reliability of intracerebral hemorrhage classification systems: a systematic review. *Int J Stroke*. 2016;11(6):626-636. doi:10.1177/1747493016641962
18. Das AS, Gokcal E, Regenhardt RW, et al. Improving detection of cerebral small vessel disease aetiology in patients with isolated lobar intracerebral haemorrhage. *Stroke Vasc Neurol*. 2023;8(1):26-33. doi:10.1136/svn-2022-001653
19. Hilkens NA, van Asch CJ, Werring DJ, et al. Predicting the presence of macrovascular causes in non-traumatic intracerebral haemorrhage: the DIAGRAM prediction score. *J Neurol Neurosurg Psychiatry*. 2018;89(7):674-679. doi:10.1136/jnnp-2017-317262
20. Wardlaw JM, Smith EE, Biessels GJ, et al. Neuroimaging standards for research into small vessel disease and its contribution to ageing and neurodegeneration. *Lancet Neurol*. 2013;12(8):822-838. doi:10.1016/S1474-4422(13)70124-8
21. Charidimou A, Boulouis G, Frosch MP, et al. The Boston criteria version 2.0 for cerebral amyloid angiopathy: a multicentre, retrospective, MRI-neuropathology diagnostic accuracy study. *Lancet Neurol*. 2022;21(8):714-725. doi:10.1016/S1474-4422(22)00208-3
22. Wilson D, Ogungbemi A, Ambler G, Jones I, Werring DJ, Jäger HR. Developing an algorithm to identify patients with intracerebral haemorrhage secondary to a macrovascular cause. *Eur Stroke J*. 2017;2(4):369-376. doi:10.1177/2396987317732874
23. Charidimou A, Schmitt A, Wilson D, et al. The Cerebral Haemorrhage Anatomical Rating in Stratum (CHARTS): development and assessment of reliability. *J Neurol Sci*. 2017;372:178-183. doi:10.1016/j.jns.2016.11.021
24. Goeldin MB, Mueller A, Siepen BM, et al. Etiology, 3-month functional outcome and recurrent events in non-traumatic intracerebral hemorrhage. *J Stroke*. 2022;24(2):266-277. doi:10.5853/jos.2021.01823
25. Meinel TR, Branca M, De Marchis GM, et al. Prior anticoagulation in patients with ischemic stroke and atrial fibrillation. *Ann Neurol*. 2021;89(1):42-53. doi:10.1002/ana.25917
26. Gregoire SM, Chaudhary UJ, Brown MM, et al. The Microbleed Anatomical Rating Scale (MARS): reliability of a tool to map brain microbleeds. *Neurology*. 2009;73(21):1759-1766. doi:10.1212/WNL.0b013e3181c34a7d
27. Charidimou A, Linn J, Vernooij MW, et al. Cortical superficial siderosis: detection and clinical significance in cerebral amyloid angiopathy and related conditions. *Brain*. 2015;138(pt 8):2126-2139. doi:10.1093/brain/aww162
28. Charidimou A, Boulouis G, Roongpiboonsopit D, et al. Cortical superficial siderosis multifocality in cerebral amyloid angiopathy: a prospective study. *Neurology*. 2017;89(21):2128-2135. doi:10.1212/WNL.0000000000004665
29. Pasi M, Boulouis G, Fotiadis P, et al. Distribution of lacunes in cerebral amyloid angiopathy and hypertensive small vessel disease. *Neurology*. 2017;88(23):2162-2168. doi:10.1212/WNL.0000000000004007
30. Fazekas F, Chawluk JB, Alavi A, Hurtig HI, Zimmerman RA. MR signal abnormalities at 1.5 T in Alzheimer's dementia and normal aging. *AJR Am J Roentgenol*. 1987;149(2):351-356. doi:10.2214/ajr.149.2.351
31. Charidimou A, Boulouis G, Haley K, et al. White matter hyperintensity patterns in cerebral amyloid angiopathy and hypertensive arteriopathy. *Neurology*. 2016;86(6):505-511. doi:10.1212/WNL.0000000000002362
32. Charidimou A, Boulouis G, Pasi M, et al. MRI-visible perivascular spaces in cerebral amyloid angiopathy and hypertensive arteriopathy. *Neurology*. 2017;88(12):1157-1164. doi:10.1212/WNL.0000000000003746
33. *TABLE1\_MC: Stata module to create "table 1" of baseline characteristics for a manuscript [computer program]*. Department of Economics, Boston College, 2017.
34. Linn J, Halpin A, Demaerel P, et al. Prevalence of superficial siderosis in patients with cerebral amyloid angiopathy. *Neurology*. 2010;74(17):1346-1350. doi:10.1212/WNL.0b013e3181dada605
35. Martí-Fàbregas J, Prats-Sánchez L, Guisado-Alonso D, Martínez-Domeño A, Delgado-Mederos R, Camps-Renom P. SMASH-U versus H-ATOMIC: a head-to-head comparison for the etiologic classification of intracerebral hemorrhage. *J Stroke Cerebrovasc Dis*. 2018;27(9):2375-2380. doi:10.1016/j.jstrokecerebrovasdis.2018.04.026
36. Blanc C, Viguier A, Calviere L, et al. Underlying small vessel disease associated with mixed cerebral microbleeds. *Front Neurol*. 2019;10:1126. doi:10.3389/fneur.2019.01126
37. Pasi M, Charidimou A, Boulouis G, et al. Mixed-location cerebral hemorrhage/microbleeds: underlying microangiopathy and recurrence risk. *Neurology*. 2018;90(2):e119-e126. doi:10.1212/WNL.0000000000004797
38. Al-Shahi Salman R, Dennis MS, Sandercock PAG, et al. Effects of antiplatelet therapy after stroke due to intracerebral haemorrhage (RESTART): a randomised, open-label trial. *Lancet*. 2019;393(10191):2613-2623. doi:10.1016/S0140-6736(19)30840-2
39. Fischer U, Cooney MT, Bull LM, et al. Acute post-stroke blood pressure relative to pre-morbid levels in intracerebral haemorrhage versus major ischaemic stroke: a population-based study. *Lancet Neurol*. 2014;13(4):374-384. doi:10.1016/S1474-4422(14)70031-6
40. Charidimou A, Imaizumi T, Moulin S, et al. Brain hemorrhage recurrence, small vessel disease type, and cerebral microbleeds: a meta-analysis. *Neurology*. 2017;89(8):820-829. doi:10.1212/WNL.0000000000004259
41. Black S, Gao F, Bilbao J. Understanding white matter disease: imaging-pathological correlations in vascular cognitive impairment. *Stroke*. 2009;40(3 suppl):S48-S52. doi:10.1161/STROKEAHA.108.537704