

Peer reviewed article

Successful embolization of Rasmussen's aneurysm for severe haemoptysis

Pierre-Yves Jayet^a, Alban Denys^b, Jean-Pierre Zellweger^a, Caroline Chapuis-Taillard^c, Jacques-Olivier Maillard^d, Grégoire Christen^d, John-David Aubert^a

^a Pulmonology Service, University Hospital Lausanne, Switzerland

^b Department of Radiology and Interventional Radiology, University Hospital Lausanne, Switzerland

^c Department of Infectious Diseases, University Hospital Lausanne, Switzerland

^d Department of Internal Medicine, University Hospital Lausanne, Switzerland

Case report

A 56 year old man with a history of smoking related COPD was admitted to our hospital with a one week history of worsening chronic cough with the recent development of haemorrhagic phlegm and a subfebrile state. Chest x-rays showed a cavitory infiltrate in the left upper lobe, a right pleural effusion and bilateral mediastinal partially calcified enlarged lymph nodes. Direct sputum examination was positive for *M. tuberculosis* and was confirmed by culture. Eight days after initiation of a standard four drug antituberculosis treatment regime the patient presented with repeated and major haemoptysis of up to 200 ml/event. Chest x-ray showed a new air fluid level in the left superior cavity. A CT-scan of the thorax disclosed a voluminous Rasmussen's pseudoaneurysm (figure 1). Selective catheterization using a femoral approach to the left apical superior pulmonary artery showed the pseudoaneurysm arising from a subsegmental branch (figure 2). The branch was selectively embolized with 3 coils (0.035 inches 5–3 mm in diameter [COOK, Bloomington, Indiana, USA]) resulting in occlusion of this segmental branch and no filling of the pseudoaneurysm (figure 2). Haemoptysis stopped and over the next few days sputum became negative for acid fast bacilli. No further surgical intervention was performed.

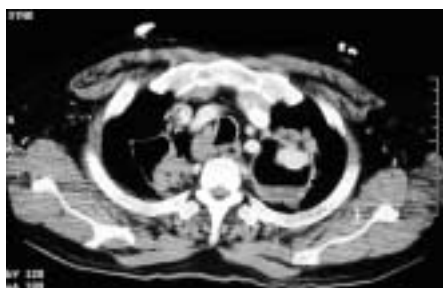


Figure 1

CT Scan shows enhancement by contrast of a voluminous Rasmussen's pseudoaneurysm of the left superior cavity wall.

Chest x-ray after one year follow-up showed resolution of the cavitory lesion and no recurrence of haemoptysis. Standardized tuberculosis treatment with a four drug regime (isoniazid – rifampicin – pyrazinamide – ethambutol) over two months followed by four months of a two drug regime (isoniazid – rifampicin) was successfully completed and the patient was declared cured at the end of the treatment (1 direct exam and 2 negative cultures before the end of the treatment) [1].

Discussion

Numerous sequelae and complications occurring in pulmonary tuberculosis can give rise to haemoptysis [2]: parenchymal lesions (aspergilloma invading an open healed cavity, scar carcinoma), airway lesions (bronchiectasis, broncholithiasis) or vascular lesions (pulmonary or bronchial arteritis and thrombosis or dilatation). Up to one third of patients with pulmonary tuberculosis will develop haemoptysis during the course of their illness [3] and before the advent of antibiotic therapy massive haemoptysis was the cause of 4–7% of deaths [4]. In the United States tuberculosis is responsible for 7 to 16 percent of all cases of haemoptysis [4]. In approximately 80% of cases the hemorrhagic source is found in the bronchial or other systemic arteries supplying the lung and in the remaining 20% in the pulmonary arteries [5]. Most bleeds are caused by vascular erosion without development of a pseudoaneurysm. In 1868, in a series of autopsies performed on tuberculous patients with a fatal haemoptysis, Rasmussen described nine cases of ruptured aneurysmal vessels originating from branches of the pulmonary artery in a tangential position to the cavity wall [6]. Systematic autopsies performed on patients who died with cavitory

lesions has shown the presence of a pseudoaneurysm of Rasmussen in four percent of cases [7]. Inflammatory response and destruction due to the spread of tuberculosis into the adventitia and media of pulmonary or bronchial artery walls results in the weakening of the arterial wall, allowing the development of a herniation of the vessel into the lumen of the cavity (pseudoaneurysm). The risk of rupture is then high due to the development of the aneurysm and the inflammatory processes in the arterial wall.

The indication for radiological or surgical intervention is considered when major (>200 ml per 24 hours) haemoptysis occurs. No randomised study has compared the results of interventional radiology with surgical resection. Surgical resection of the bleeding site (usually lobectomy) allows a definitive recovery when the patient is operable [4]. Alternatively, bronchial or pulmonary embolization is considered first-line treatment in the case of massive haemoptysis or when a patient is not a candidate for surgery, either as a temporary measure before surgery or as a definitive therapy [8]. Contrast-enhanced CT-scan is the cornerstone procedure to localize haemoptysis and also to detect any obvious vascular anomalies such as Rasmussen's pseudoaneurysm. If systemic and pulmonary angiographies fail to supply the diagnosis, bronchial or other systemic arteries supplying the lung may be electively embolized either on the side of bleeding or in their totality. Selective angiographic embolization of the supplying pulmonary arteries may also be performed when the haemorrhagic source is obviously from the pulmonary circulation (Rasmussen's pseudoaneurysm), or in the case of recurrent bleeding after embolization of the systemic circulation, having excluded a

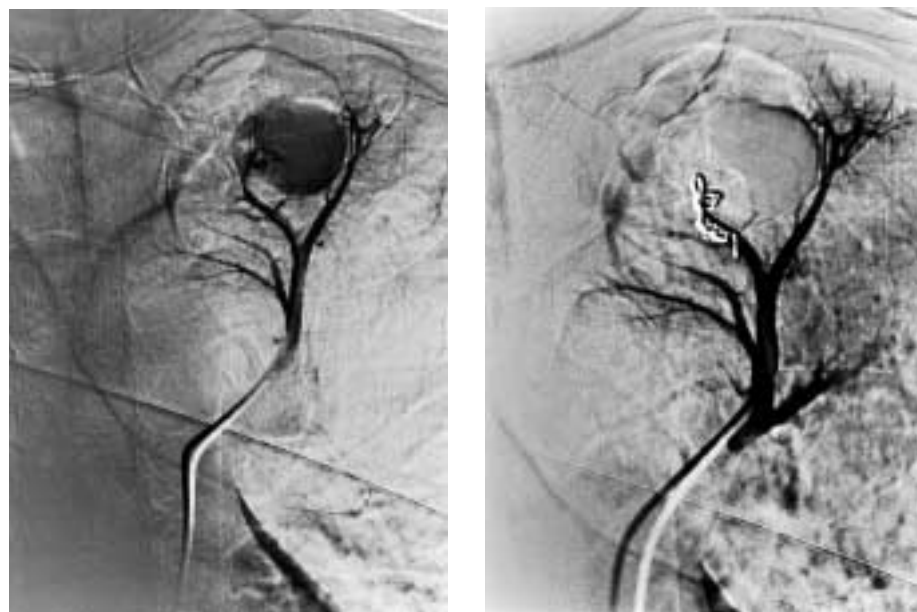


Figure 2

On the left side, selective catheterization of the apical left superior pulmonary artery demonstrates a voluminous pseudoaneurysm deriving from a subsegmental branch. On the right side, angiography shows complete occlusion of the involved branch and no filling of the pseudoaneurysm after the embolization with coils.

recurrence in the territory already treated. While conservative pulmonary transcatheter occlusion is generally a safe procedure, a small number of major complications cannot be avoided, as for example, the rupture of an aneurysm or of fragile vessels caused by increased pressure during hyperselective injection [9]. These complications cannot always be managed conservatively so that the availability of a thoracic surgeon on site is necessary during the procedure [10].

Conclusion

Rasmussen's aneurysm is a rare condition that may lead to life threatening haemoptysis during the course of pulmonary tuberculosis. Selective angiographic embolization of arteries supplying the aneurysm is a safe alternative to surgery for stopping the haemorrhage with minimal risk.

Acknowledgments: We are indebted to Dr Raymond Fesselet for his help in finding radiological documents and to Mrs Kathy Grant for her help with English grammar.

Correspondence:

Pierre-Yves Jayet MD
Pulmonology Service
University Hospital Lausanne (CHUV)
CH-1011 Lausanne
Switzerland
E-mail: pierre-yves.jayet@chuv.hospvd.ch

References

- 1 Veen J, Raviglione M, Rieder HL, Migliori GB, Graf P, Grzemska M, et al. Standardized tuberculosis treatment outcome monitoring in Europe. Recommendations of a Working Group of the World Health Organization (WHO) and the European Region of the International Union Against Tuberculosis and Lung Disease (IU-ATLD) for uniform reporting by cohort analysis of treatment outcome in tuberculosis patients. *Eur Respir J* 1998;12:505–10.
- 2 Kim HY, Song KS, Goo JM, Lee JS, Lee KS, Lim TH. Thoracic sequelae and complications of tuberculosis. *Radiographics* 2001;21:839–58; discussion 859–60.
- 3 Iseman M. Haemoptysis: origins and management. In: Wilkins LW, editor. *A clinical guide to tuberculosis*; 2000. p. 140–144.
- 4 Ran W, Garay S. Haemoptysis. In: Little BaC, editor. *A clinical guide to tuberculosis*; 1996. p. 392–393.
- 5 Sanyika C, Corr P, Royston D, Blyth DF. Pulmonary angiography and embolization for severe haemoptysis due to cavitary pulmonary tuberculosis. *Cardiovasc Intervent Radiol* 1999;22:457–60.
- 6 Rasmussen V. In: *Hemoptysis, namentlich der lethalen in anatomischer und klinischer Beziehung*. Hospital Tidende; 1868.
- 7 Santelli ED, Katz DS, Goldschmidt AM, Thomas HA. Embolization of multiple Rasmussen aneurysms as a treatment of haemoptysis. *Radiology* 1994;193:396–8.
- 8 Picard C, Parrot A, Boussaud V, Lavole A, Saïdi F, Mayaud C, et al. Massive haemoptysis due to Rasmussen aneurysm: detection with helicoidal CT angiography and successful steel coil embolization. *Intensive Care Med* 2003;29:1837–9.
- 9 Remy-Jardin M, Wattinne L, Remy J. Transcatheter occlusion of pulmonary arterial circulation and collateral supply: failures, incidents, and complications. *Radiology* 1991;180:699–705.
- 10 Patankar T, Prasad S, Deshmukh H, Mukherji SK. Fatal haemoptysis caused by ruptured giant Rasmussen's aneurysm. *AJR Am J Roentgenol* 2000;174:262–3.

The many reasons why you should choose SMW to publish your research

What Swiss Medical Weekly has to offer:

- SMW's impact factor has been steadily rising, to the current 1.537
- Open access to the publication via the Internet, therefore wide audience and impact
- Rapid listing in Medline
- LinkOut-button from PubMed with link to the full text website <http://www.smw.ch> (direct link from each SMW record in PubMed)
- No-nonsense submission – you submit a single copy of your manuscript by e-mail attachment
- Peer review based on a broad spectrum of international academic referees
- Assistance of our professional statistician for every article with statistical analyses
- Fast peer review, by e-mail exchange with the referees
- Prompt decisions based on weekly conferences of the Editorial Board
- Prompt notification on the status of your manuscript by e-mail
- Professional English copy editing
- No page charges and attractive colour offprints at no extra cost

Editorial Board

Prof. Jean-Michel Dayer, Geneva
 Prof. Peter Gehr, Berne
 Prof. André P. Perruchoud, Basel
 Prof. Andreas Schaffner, Zurich
 (Editor in chief)
 Prof. Werner Straub, Berne
 Prof. Ludwig von Segesser, Lausanne

International Advisory Committee

Prof. K. E. Juhani Airaksinen, Turku, Finland
 Prof. Anthony Bayes de Luna, Barcelona, Spain
 Prof. Hubert E. Blum, Freiburg, Germany
 Prof. Walter E. Haefeli, Heidelberg, Germany
 Prof. Nino Kuenzli, Los Angeles, USA
 Prof. René Lutter, Amsterdam, The Netherlands
 Prof. Claude Martin, Marseille, France
 Prof. Josef Patsch, Innsbruck, Austria
 Prof. Luigi Tavazzi, Pavia, Italy

We evaluate manuscripts of broad clinical interest from all specialities, including experimental medicine and clinical investigation.

We look forward to receiving your paper!

Guidelines for authors:

http://www.smw.ch/set_authors.html

Impact factor Swiss Medical Weekly



All manuscripts should be sent in electronic form, to:

EMH Swiss Medical Publishers Ltd.
 SMW Editorial Secretariat
 Farnsburgerstrasse 8
 CH-4132 Muttenz

Manuscripts: submission@smw.ch
 Letters to the editor: letters@smw.ch
 Editorial Board: red@smw.ch
 Internet: <http://www.smw.ch>