
UNIVERSITE DE LAUSANNE - FACULTE DE BIOLOGIE ET DE MEDECINE

Département universitaire de médecine et santé communautaires
Institut universitaire de médecine sociale et préventive

**The 'help' question doesn't help when screening for major depression:
external validation of the three-question screening test for primary care
patients managed for physical complaints**

THESE

préparée sous la direction du Professeur Bernard Burnand
(avec la collaboration du Docteur Lilli Herzig, Chargée de cours)

et présentée à la Faculté de biologie et de médecine de
l'Université de Lausanne pour l'obtention du grade de

DOCTEUR EN MEDECINE

par

Patrick LOMBARDO

Médecin diplômé de la Confédération Suisse
Originaire de Montreux (VD)

Lausanne

2012

Bibliothèque Universitaire
de Médecine / BiUM
CHUV-BH08 - Bugnon 46
CH-1011 Lausanne

R 00226-1179

Unil

UNIL | Université de Lausanne
Faculté de biologie
et de médecine

*Ecole Doctorale
Doctorat en médecine*

Imprimatur

Vu le rapport présenté par le jury d'examen, composé de

Directeur de thèse Monsieur le Professeur Bernard Burnand

Co-Directeur de thèse

Expert Monsieur le Professeur Martin Preisig

*Directrice de l'Ecole Madame le Professeur Stephanie Clarke
doctorale*

la Commission MD de l'Ecole doctorale autorise l'impression de la thèse de

Monsieur Patrick Lombardo

intitulée

*The "help" question doesn't help when screening for major
depression: external validation of the three-question screening
test for primary care patients managed for physical
complaints*

Lausanne, le 18 octobre 2012

*pour Le Doyen
de la Faculté de Biologie et de Médecine*



*Madame le Professeur Stephanie Clarke
Directrice de l'Ecole doctorale*

Rapport de synthèse

Introduction

La dépression majeure est fréquente chez les patients qui consultent un cabinet de médecine générale. Elle reste toutefois difficile à diagnostiquer car elle est souvent masquée par une ou plusieurs plaintes physiques qui sont l'unique motif de consultation. Pour aider le médecin généraliste à démasquer ce trouble, un test de dépistage composé de deux questions a été développé et validé. Ce test indique une probabilité accrue de dépression si le patient répond positivement à au moins une des deux questions suivantes : « Est-ce que, durant le mois qui a précédé, vous vous êtes senti(e) triste, déprimé(e), désespéré(e) ? » et « Durant le mois qui a précédé, avez-vous ressenti un manque d'intérêt et de plaisir dans la plupart des activités que d'habitude vous appréciez ? ». Une troisième question, ajoutée aux deux questions ci-dessus, a été proposée récemment afin d'améliorer les performances de ce test de dépistage. Cette troisième question rend le test négatif si le patient répond négativement à la question suivante : « Souhaitez-vous de l'aide pour cela ? ». Une étude avait indiqué que l'ajout de la question supplémentaire améliorerait la spécificité du test sans réduire sa sensibilité.

Objectifs

Il s'agissait de décrire la performance de deux tests de dépistage de la dépression majeure, composés, respectivement, de deux et de trois questions, dans une population de patients consultant dans un cabinet de médecine générale pour une plainte physique, et de les valider.

Méthode

Les réponses aux questions des tests de dépistage de la dépression dans la population de la cohorte SODA (Somatisation, Depression, Anxiety) ont été utilisées. Il s'agissait de patients de plus de 18 ans, sélectionnés aléatoirement, consultant pour au moins une plainte physique auprès de 24 médecins généralistes de Suisse Romande, réexaminés une année après l'inclusion dans la cohorte. Le questionnaire validé « Full Patient Health Questionnaire » a été utilisé, le même jour, pour diagnostiquer une dépression majeure. Ce résultat a été utilisé pour évaluer les performances des deux tests de dépistage en calculant la sensibilité et la spécificité, notamment.

Résultats

Les données de 724 / 937 patients inclus ont pu être utilisées. Un diagnostic de dépression majeure a été posé chez 9.5% des patients (n = 69). La sensibilité et la spécificité des deux questions de dépistage étaient de 91.3% (IC_{95%} : 81.4-96.4%) et 65.0% (IC_{95%} : 61.2-68.6%), respectivement. En ajoutant la troisième question, la sensibilité des deux questions de dépistage a diminué à 59.4% (IC_{95%} : 47.0-70.9%) et la spécificité a augmenté à 88.2% (IC_{95%} : 85.4-90.5%).

Conclusions

L'utilisation des deux questions pour le dépistage de la dépression majeure est associée à une haute sensibilité et à une basse spécificité chez des patients se présentant en cabinet de médecine générale pour une plainte physique. En ajoutant la troisième question, la spécificité augmente, mais la sensibilité diminue. Ainsi, en ajoutant la troisième question, quatre patients dépressifs majeurs sur dix ne sont pas détectés, alors que seulement un patient sur dix n'est pas détecté avec les deux questions de dépistage. Notre étude montre que le test composé de deux questions reste une méthode de choix pour le dépistage de la dépression majeure et que l'ajout de la troisième question n'est pas recommandée. Celle-ci reste toutefois pertinente dans l'incitation au dialogue sur le sujet de la dépression entre le médecin et son patient.

RESEARCH ARTICLE

Open Access

The 'help' question doesn't help when screening for major depression: external validation of the three-question screening test for primary care patients managed for physical complaints

Patrick Lombardo¹, Paul Vaucher¹, Nader Haftgoli¹, Bernard Burnand², Bernard Favrat³, François Verdon¹, Thomas Bischoff¹ and Lilli Herzig^{1*}

Abstract

Background: Major depression, although frequent in primary care, is commonly hidden behind multiple physical complaints that are often the first and only reason for patient consultation. Major depression can be screened by two validated questions that are easier to use in primary care than the full *Diagnostic and Statistical Manual of Mental Disorders*, fourth edition (DSM-IV) criteria. A third question, called the 'help' question, improves the specificity without apparently decreasing the sensitivity of this screening procedure. We validated the abbreviated screening procedure for major depression with and without the 'help' question in primary care patients managed for a physical complaint.

Methods: This diagnostic accuracy study used data from the SODA (for "SOmatisation Depression Anxiety") cohort study conducted by 24 general practitioners (GPs) in western Switzerland that included patients over 18 years of age with at least a single physical complaint at index consultation. Major depression was identified with the full Patient Health Questionnaire. GPs were asked to screen patients for major depression with the three screening questions 1 year after inclusion.

Results: Of 937 patients with at least a single physical complaint, 751 were eligible 1 year after index consultation. Major depression was diagnosed in 69/724 (9.5%) patients. The sensitivity and specificity of the two-question method alone were 91.3% (95% CI 81.4 to 96.4) and 65.0% (95% CI 61.2 to 68.6), respectively. Adding the 'help' question decreased the sensitivity (59.4%; 95% CI 47.0 to 70.9) but improved the specificity (88.2%; 95% CI 85.4 to 90.5) of the three-question method.

Conclusions: The use of two screening questions for major depression was associated with high sensitivity and low specificity in primary care patients presenting a physical complaint. Adding the 'help' question improved the specificity but clearly decreased the sensitivity; when using the 'help' question, four out of ten patients with depression will be missed, compared to only one out of ten with the two-question method. Therefore, the 'help' question is not useful as a screening question, but may help discussing management strategies.

Background

Major depression is found in 3.9% of the general population in Europe [1] and a prevalence of 5% to 14% has been reported in primary care patients [2-6]. In a more recent meta-analysis the rate of depression was even of 17% to 19% [7]. However, major depression is commonly

hidden behind multiple and sometimes unexplained physical complaints that are often the first and only reason for patients to request consultation [8-12]. Detecting mental disorders in the presence of such complaints is thus an important challenge for general practitioners (GPs) [13]. To help GPs detect major depression, a screening tool containing two questions has been derived from the *Diagnostic and Statistical Manual of Mental Disorders*, fourth edition (DSM-IV) criteria and validated

* Correspondence: lilli.herzig@hin.ch

¹Institute of General Medicine, University of Lausanne, Lausanne, Switzerland
Full list of author information is available at the end of the article

[14]. These questions are simple, respectful, easy to integrate into the consultation, and require less time than the full DSM-IV criteria. Arroll *et al.* [15,16] suggested the addition of a third question called the 'help' question, in which the patient is asked whether they would like help regarding the issues raised by the first two screening questions. This new screening tool was reported to result in increased specificity (from 67% to 89%) not accompanied by decreased sensitivity (from 97% to 96%). In general, the addition of a mandatory qualifying question to a screening tool usually decreases the sensitivity and increases the specificity of the test, unless the added question is perfectly discriminatory.

Since most primary care patients are usually followed by their GP for many years, we conducted a novel investigation into the utility of these screening procedures over time. We examined the contribution to diagnosis of the two screening questions and the additional 'help' question in patients previously seen by a GP for a physical complaint (index consultation) and followed-up for a year. The accuracies of the two-question and three-question screening methods were explored across subgroups defined by age, gender, education level, migration status, presence of other mental disorders (anxiety, somatoform disorder, alcohol abuse), and presentation of major or minor depression at the time of index consultation.

Methods

This diagnostic accuracy study was nested within a larger cohort study on the occurrence and correlations of depression, anxiety, and somatoform disorders (the SODA (for 'SOMatisation Depression Anxiety') cohort study [17]) in primary care patients with physical complaints who were followed over 1 year. Data were collected in western French-speaking Switzerland by 21 GPs in private practice and 3 medical doctor (MD) trainees from 1 academic primary care centre from November 2004 to March 2007. This study protocol was approved by the State Ethics Committee of the Canton of Vaud (Prot.100/04).

Patients and follow-up

This study, conducted 1 year after the index consultation, included consenting patients aged 18 years and over who presented with at least 1 physical complaint during the index consultation at 1 of 22 recruiting centres. Patients with vital emergencies, dementia, intellectual deficiency, inability to understand French, or acute psychiatric diseases that prevented the patient from answering appropriately were excluded. The GPs included one patient per each half-day of consultation. To minimise selection bias, patients eligible for inclusion were selected by each GP using a pre-established, daily, randomised rank order list, thus defining each eligible patient for every half-day. In the academic primary care centre all eligible patients were

enrolled (MD trainees see fewer patients) nevertheless more patients could not be included, mainly due to language barriers. GPs completed a case report form for each patient. Each patient received a self-administered questionnaire that was either to be completed in the waiting room or returned by mail in the next few days. Patients were followed-up by their GPs as needed according to usual practice. The 1-year follow-up consultation took place during a scheduled visit 9-15 months after the index consultation. Patients who did not consult their physicians spontaneously during the 1-year follow-up were invited by phone to plan a visit within the next 3 months. Data collected during the follow-up consultation allowed the assessment of the accuracy of the screening questions in detecting major depression.

The participating primary care physicians were all trained in family practice or general internal medicine and worked in primary care settings. These physicians were trained in the use of the three screening questions for major depression. GPs were allowed to investigate depression only after they asked the three screening questions. Physicians were blinded to the reference standard results of both the initial and follow-up consultations, but were not necessarily blinded to the patient's depression status.

Questionnaires

During the index and follow-up consultations, GPs read out the two screening questions for major depression: 'During the past month have you often been bothered by feeling down, depressed, or hopeless?' and 'During the past month have you often been bothered by little interest or pleasure in doing things?'. Patients responding positively to either of these questions were asked the 'help' question: 'Is this something with which you would like help?' with three possible responses: 'no', 'yes, but not today', or 'yes'. These three screening questions were translated from English to French and then reverse translated. Patients responding positively to either of the first two questions were considered 'positive' for the two screening questions. Patients who responded positively to either of the two questions and to the 'help' question ('yes' or 'yes, but not today') were considered 'positive' for the three screening questions. All other patients were considered 'negative'.

After the consultation, the patients independently completed the reference standard questionnaire (full Patient Health Questionnaire (PHQ)) [3,18,19], a validated French version of the self-reported Primary Care Evaluation of Mental Disorders (PRIME-MD) [20] questionnaire. This questionnaire was designed to detect mental disorders in primary care practice, including depression, anxiety, alcohol abuse, and eating and somatoform disorders. To classify whether patients had major depression, we used nine questions corresponding to DSM-IV criteria (questions 2a

to 2i) [18]. Patients who responded positively to at least one of the first two screening questions and to five or more of the nine questions were considered to have major depressive syndrome. Minor depression was considered present when three or four of the nine questions were answered positively and at least one of the two core questions.

Anxiety, somatoform disorder, alcohol abuse and exposure to psychosocial stressors were assessed with PHQ questions. Patients were considered to be exposed to a psychosocial stressor if they reported being bothered a lot by at least one of the ten stressors assessed with question 12 of the full PHQ [18] (1, health; 2, weight or appearance; 3, having little or no sexual desire or pleasure during sex; 4, difficulties with husband/wife, partner/lover or boyfriend/girlfriend; 5, the stress of taking care of children, parents or other family members; 6, stress at work or outside of the home or at school; 7, financial problems or worries; 8, having no one to turn to when having a problem; 9, something bad that happened recently; 10, thinking or dreaming about something terrible that happened in the past). Sociodemographic questions included age, gender, and nationality (dichotomised into Swiss or non-Swiss). Professional education included eight categories summarised in a dichotomised variable: presence or absence of fully achieved training beyond compulsory school.

Questionnaires were sent to the data centre, and all variables were double entered and checked. A researcher, blinded to index consultation results, determined which patients presented PHQ criteria for major depression.

Statistical methods

The sample size necessary to obtain a 10%-wide interval around a 70% expected sensitivity ($\alpha = 0.05$) was calculated, assuming a 10% prevalence of major depression. The expectation of 20% loss to follow-up led to a total of 947 patients required for inclusion, a figure that was rounded to 1,000 patients.

Sensitivity, specificity, positive and negative likelihoods, and predictive values were calculated, with their respective 95% confidence intervals (95% CIs), to determine screening test accuracy. Sensitivity, specificity, and 95% CIs were also calculated for subpopulations stratified by age, gender, nationality, education level, anxiety, somatoform disorder, depression status at the index consultation, and exposure to a psychosocial stressor. Although these variables were predefined before analysis, this study was not sufficiently powerful to detect significant clinical differences between subgroups. The effects of these factors on the screening method were estimated by likelihood ratio test comparing logistic regression models with or without an interaction term. Characteristics of the patients (age, gender, level of education, and depression at index consultation) were

compared between patients included and those excluded from the analysis to assess potential selection bias.

Results

Between November 2004 and July 2005, 937 patients were included in the present study. At 1 year after inclusion, 751 patients agreed to be questioned (Figure 1). A total of 12 patients did not answer all PHQ questions, making it impossible to know whether they were suffering from depression, and the physician did not report the results of 3 screening questions for 15 other patients. Thus, 724 patients were included in the analysis. The included patients were similar to those excluded regarding gender (63.3% of women in the group included vs 62.4%), age of 65 years or over (29.8% vs 25.3%), education level (79.9% vs 79.8%), and presence of major depression at the index consultation (11.3% vs 14.0%). Most patients (91.3%) were recruited from private practices, with the number of patients from each practice ranging from 6 to 58. Patients were mainly women (63.3%) and had a mean age of 54.7 years (SD 17 years). The most frequent diagnoses for the main physical complaint were musculoskeletal (29.9%) or digestive (8.4%). In 94 patients (13%), a mental disorder was considered to be related to the initial physical complaint. During the year of follow-up, 83.1% of patients visited their GP at least once, and 40.4% received psychotherapeutic care from their GP. Psychotropic drugs were used by 34.2% of the patients and 8.1% were referred to either a psychiatrist or a psychologist. At 1 year after the index consultation the prevalence of major depression was of 9.5%.

The depression screening test administered by GPs was completed on the same day as the reference test (PHQ) by 59.3% and within 1 week by additional 25% of patients. Physicians did not report any adverse effects of using the three screening questions. GPs did not report an answer to the 'help' question in five patients (0.7%).

The sensitivity and specificity of the two screening questions were 91.3% (95% CI 81.4 to 96.4) and 65.0% (95% CI 61.2 to 68.6), respectively (Table 1). Adding the 'help' question improved the specificity to 88.2% (95% CI 85.4 to 90.5), but the sensitivity decreased to 59.4% (95% CI 47.0 to 70.9). In fact, 118 (40.4%) of the patients initially screened positive for depression (N 292) were willing to accept help (Figure 2). Considering the patients who were not already being treated for major depression only, the sensitivity and the specificity of the two-question method are, respectively, 84.6% (95% CI 54.6 to 98.1) and 76.8% (95% CI 72.0 to 81.2). For the three-question method the sensitivity decreased to 46.2% (95% CI 19.2 to 74.9) and the specificity increased to 94.5% (95% CI 91.5 to 96.7).

We next explored the sensitivity and specificity of both screening instruments in various patient subpopulations

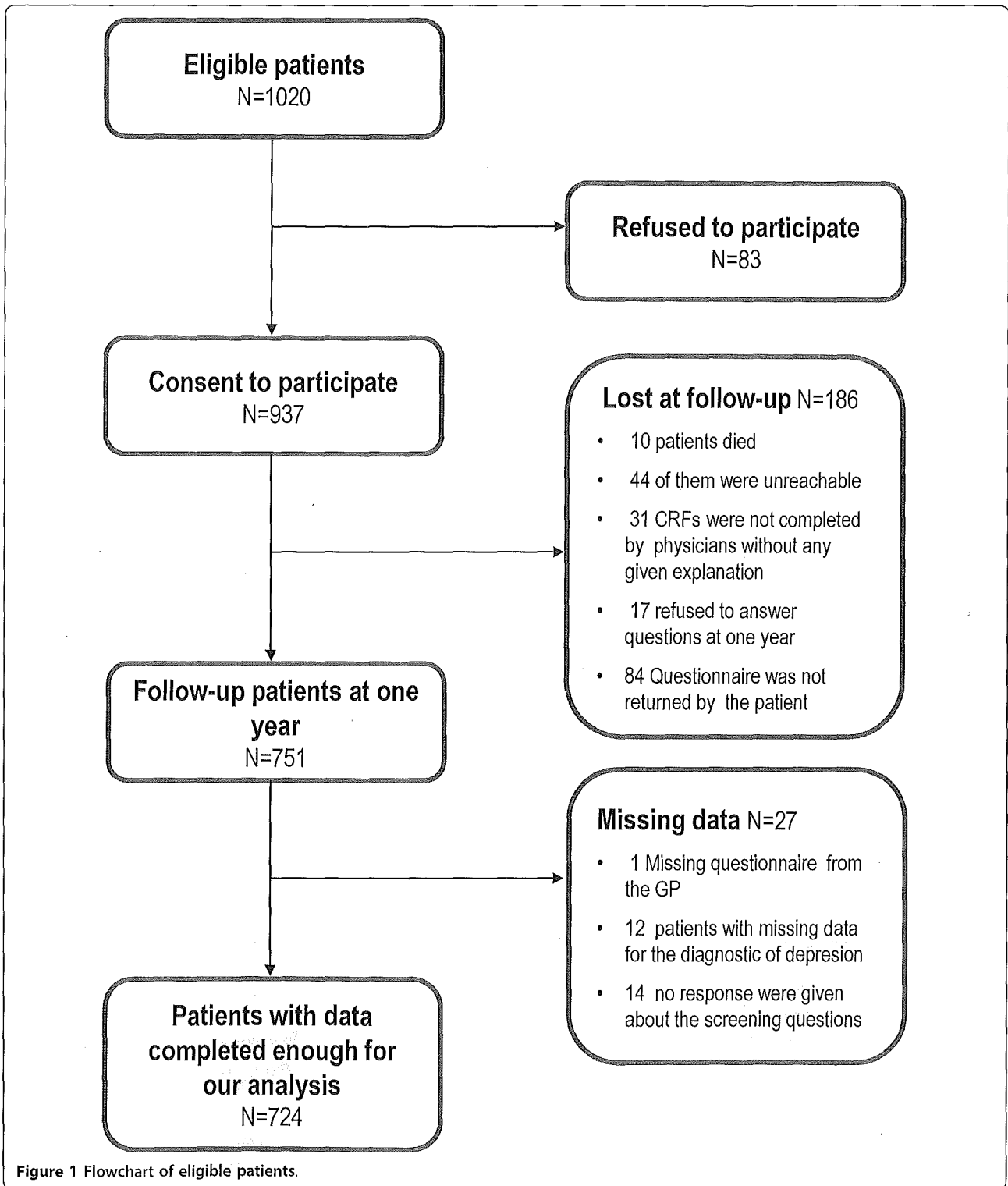


Figure 1 Flowchart of eligible patients.

(Table 2). The sensitivity of the two-question method was high and consistent through the entire population, ranging from 80% (95% CI 51.3 to 94.6) in patients older than 65 years to 100% (95% CI 83.4 to 100) in men. The

specificity of both screening instruments exhibited important disparities across patients with various mental states. Patients who suffered from depression at the index consultation, who were exposed to a psychosocial

Table 1 Sensitivity, specificity, positive/negative predictive values, positive/negative likelihood ratios for major depression

Parameter	Two screening questions % (95% CI)	Three screening questions % (95% CI)
Sensitivity	91.3% (81.4 to 96.4)	59.4% (47.0 to 70.9)
Specificity	65.0% (61.2 to 68.6)	88.2% (85.4 to 90.5)
Positive predictive value	21.6% (17.1 to 26.8)	34.7% (26.4 to 44.1)
Negative predictive value	98.6% (96.8 to 99.4)	95.3% (93.3 to 96.8)
Positive likelihood ratio	2.6 (2.3 to 3.0)	5.0 (3.8 to 6.7)
Negative likelihood ratio	0.1 (0.06 to 0.28)	0.5 (0.3 to 0.6)

stressor during the 4 previous weeks, or who were diagnosed with either anxiety or somatoform disorder were more likely to answer positively to each screening instrument without being diagnosed as having depression, as indicated by a lower specificity (Table 2).

Discussion

In primary care patients well known by their GPs, the two-question screening method for major depression displayed high sensitivity (91%) and low specificity (65%). As suspected, adding the 'help' question led to a decreased sensitivity (59%) but a higher specificity (88%). We also observed a lower specificity for the two-question and three-question methods in subpopulations with other psychiatric conditions (such as generalised anxiety) and in patients who had exhibited major depression 1 year previously.

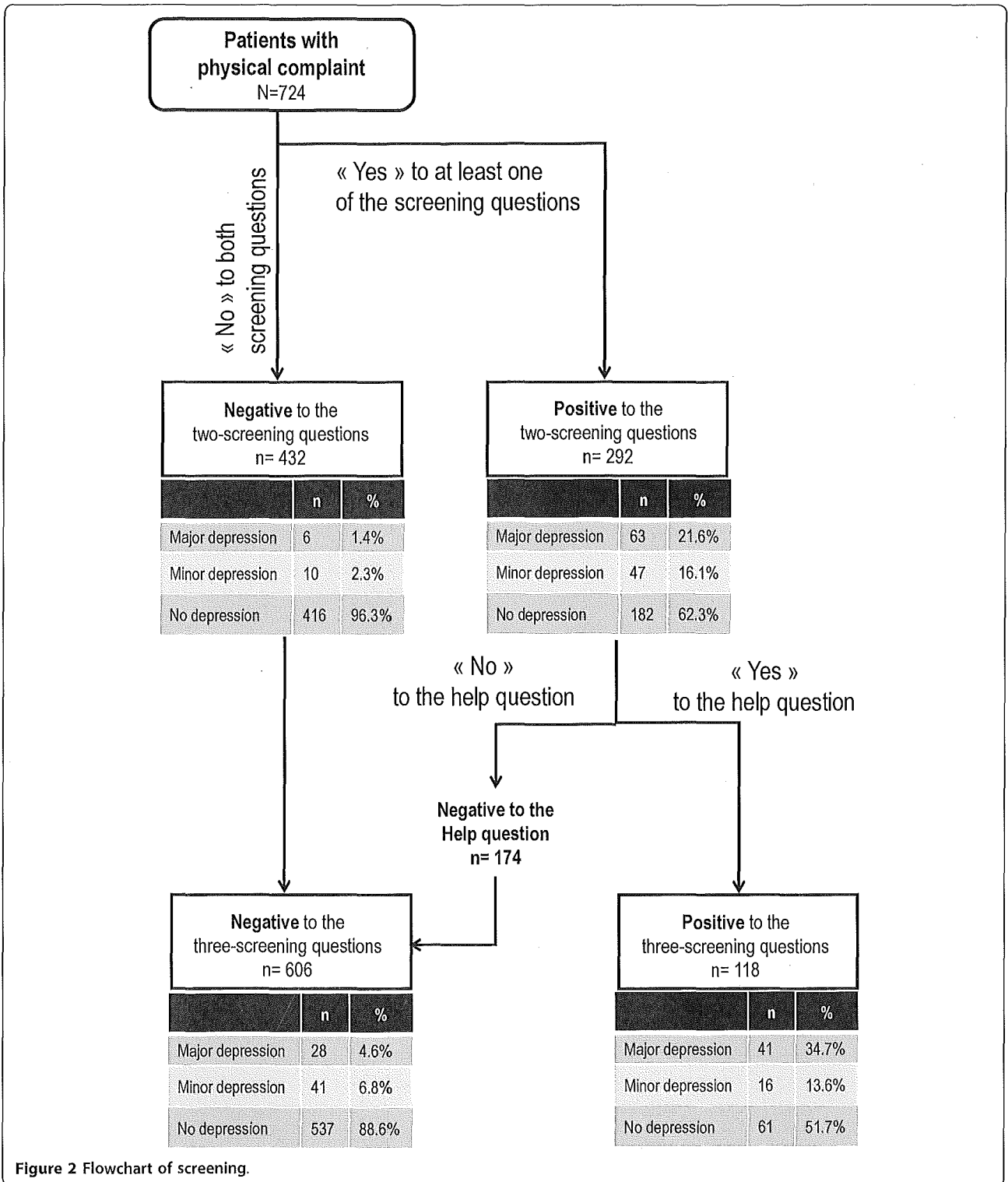
The strengths of our study are its large sample size, the number and diversity of the participating GPs, and the use of standardised, validated measures for mental disorders. Furthermore, the random selection of patients and their recruitment from a large number of GPs in various settings decreased the risk of selection bias. We therefore believe that our observations are relevant for most patients with physical complaints in primary care in developed countries. However, our study is limited because the two screening questions for major depression were similar to those of the PHQ-9, our reference standard. Therefore, the sensitivity of the screening method is expected to be very high. Finally, the PHQ-9 may not be the best reference standard for major depression for the following three reasons: (1) it is self-report, (2) it doesn't apply exclusion criteria, and (3) it doesn't apply clinical significance criteria. Thus PHQ-9 can only be interpreted as a proxy of DSM-IV [21,22]. Therefore a standardised visit to a psychiatrist would have been preferred.

Whooley *et al.* [23] and Arroll *et al.* [24] first introduced the two-question screening method and reported high sensitivities (96% and 97%, respectively) and low

specificities (57% and 67%, respectively). Löwe *et al.* [25] evaluated the two screening questions in outpatients and obtained similar results with a dichotomous answer (yes/no). Furthermore, the two-question method was able to detect changes in a patient's state of depression. Here we report observations similar to those of Arroll *et al.* [24] regarding screening for major depression with two questions. The high sensitivity of these questions allows GPs to securely rule out negative patients, but the relatively low specificity requires further investigations to confidently diagnose major depression in positive cases [14].

Introduction of the third 'help' question was a very interesting and logical proposition, and should have facilitated the diagnosis of major depression. When we added the 'help' question to the screening method, however, our observations were substantially different from those of Arroll *et al.*, [15] who reported increased specificity (89%) but identical sensitivity (96%). As an important number of their patients with major depression responded 'no' to the 'help' question, it is not clear why the sensitivity remained identical. In a second study, Goodyear *et al.* [16] validated the two-question and three-question methods using the PHQ-9 as a reference standard for major depression. Although the two-question method was associated with a sensitivity of 98% and a specificity of 73%, and the specificity of the three-question method questions was reported to be 99%, the sensitivity of the three-question method was not provided. A recent publication by the same authors determines a sensitivity of 99.2% and a specificity of 70.4% for the two-question method, whereas the sensitivity decreased to 87.1% and the specificity increased to 94.8% for the three-question method [26].

An independent study by Baker-Glenn *et al.* [27] observed a sensitivity of 23.7% and specificity 97.8% in patients attending chemotherapy with the three-question method. We therefore believe Arroll *et al.*'s [15] results to be misleading. These findings support the latest NICE [28] guidelines that recommend only the use of the two screening questions.



Our analysis indicates that although the three-question method has high negative predictive value, the high false negative rate implies that as many as four patients out of ten (28/69) with major depression would not be

correctly diagnosed with this method. In comparison, less than one out of ten patients (6/69) with major depression will not be diagnosed when using the two-question method. It is therefore not helpful to include

Table 2 Stratified specificity of screening questions for major depression

Characteristic	Prevalence of depression, % (95% CI)	Specificity, % (95% CI)	
		Two screening questions	Three screening questions
Overall	9.5% (7.6 to 12.0)	65.0% (61.2 to 68.6)	88.2% (85.4 to 90.5)
Gender			
Male	9.4% (6.3 to 13.7)	69.2% (63.0 to 75.0)	90.0% (85.4 to 93.4)
Female	9.6% (7.1 to 12.8)	62.5% (57.7 to 67.2)	87.2% (83.5 to 90.2)
Age			
< 65 years	10.9% (8.4 to 14.1)	66.1% (61.4 to 70.5)	87.4% (83.8 to 90.3)
≥ 65 years	6.4% (3.8 to 10.6)	62.8% (56.0 to 69.2)	89.9% (84.9 to 93.4)
Nationality			
Swiss	8.0% (6.0 to 10.6)	67.6% (63.3 to 71.5)	89.1% (86.0 to 91.5)
Not Swiss	14.8% (9.4 to 22.5)	53.2% (43.4 to 62.7)	84.4% (75.9 to 90.4)
Education level			
Professional training	9.4% (7.5 to 12.3)	66.8% (62.4 to 70.9)	88.3% (85.1 to 91.0)
No professional training	9.0% (5.0 to 15.1)	60.6% (51.7 to 68.8)	88.6% (81.7 to 93.3)
Psychosocial stressors			
≥ 1 major stressor	21.5% (16.9 to 26.9)	44.3% (37.6 to 51.1)	77.6% (71.4 to 82.8)
No major stressor	2.0% (1.0 to 4.0)	76.0% (71.7 to 79.9)	93.7% (90.9 to 95.7)
Mood disorders 1 year previously			
Major depression	39.0% (28.6 to 50.4)	34.0% (21.6 to 48.8)	62.0% (47.1 to 75.0)
Minor depression	15.0% (7.5 to 27.1)	43.1% (29.6 to 57.7)	84.3% (70.8 to 92.5)
No depression	39.1% (25.2 to 59.5)	70.1% (66.0 to 73.9)	91.1% (88.3 to 93.3)
Anxiety			
Anxiety syndrome	60.0% (45.2 to 73.2)	5% (0.2 to 26.9)	40.0% (20.0 to 63.6)
No anxiety	57.1% (41.2 to 78.3)	67.1% (63.3 to 70.8)	89.8% (87.1 to 92.0)
Somatiform disorder			
≥ 3 symptoms	31.7% (22.1 to 43.0)	46.4% (33.2 to 60.1)	67.9% (53.9 to 79.4)
< 3 symptoms	6.7% (5.0 to 9.0)	67.7% (62.7 to 70.4)	90.1% (87.4 to 92.3)

the third 'help' question to rule out major depression in patients well known by their GPs. But as Kroenke [29] suggests, 'screening for depression is not enough'. Patients identified with depression have to be treated. Therefore the 'help' question remains clinically relevant, even if more than half of patients with major depression did not ask for help. But within the context of the consultation, the 'help' question enables a continuing discussion about mood disorders and allows evaluation of the appropriateness of a psychiatric treatment and referral. Baker-Glenn *et al.* conclude, as we do, that the 'help' question may highlight patients willing to accept support [27]. This also underlines GPs' role in investigating and answering patient expectations for their psychological distress as described by Walters showing that patients with milder symptoms usually prefer simple human contact, and informal resource rather than formal interventions or medication [30]. While all these questions may help GPs screen for major depression in their patients, this tool should not replace clinical

judgment; indeed, GPs seldom rely on questionnaires alone [31,32].

Our observations suggest that the sensitivity of the two screening questions is consistent across various patient subpopulations guaranteeing a low number of false negatives regardless of patient characteristics. However, as the specificity differs across patients, GPs may frequently and falsely diagnose major depression in patients who present other mental disorders. Additional studies are necessary to quantify the actual benefits of screening mental disorders in primary care with the two-question and three-question screening methods.

Conclusions

The two-question screening method for major depression exhibited a high sensitivity and a low specificity when applied to well known primary care patients with a physical complaint. Adding the 'help' question improved the specificity of the test, but clearly decreased its sensitivity: four out of ten patients will thus be missed with the

three-question method, compared to only one out of ten with the two-question method. Although the 'help' question is not useful as a screening question in this patient group, it may facilitate discussion about mood disorders and its management.

Acknowledgements

We thank all physicians who participated in the present study: Dr C Bonnard, Dr M Bonnard, Dr J-P Bussien, Dr C Chapuis, Dr G Conne, Dr M Dafflon, Dr M Danese, Dr M De Vevey, Dr C Dvorak, Dr M Junod, Dr G Lorenz, Dr A Michaud, Dr N Mühlemann, Dr F Pilet, Dr P-A Schmied, Dr A Schwob, Dr J-P Studer, Dr M Wenner, and Dr K Würzner. We also thank Françoise Secretan and Dr B Chiarini for data management. This study was supported and financed by the Department of Ambulatory Care and Community Medicine, University of Lausanne, Switzerland and by a grant from the Swiss Academy of Medical Sciences (Projekt RRMA 2/04). The sponsors were not involved in data collection and analysis, or in writing or editing the manuscript.

Author details

¹Institute of General Medicine, University of Lausanne, Lausanne, Switzerland. ²Clinical Epidemiology Centre, Institute of Social and Preventive Medicine, University of Lausanne, Lausanne, Switzerland. ³Department of Ambulatory Care and Community Medicine, University of Lausanne, Lausanne, Switzerland.

Authors' contributions

LH, BF, FV, and BB participated in the conception and design of the study. NH, LH, FV, and TB collected data. NH monitored data collection and completed missing data, PL, PV, LH, and BF planned and analysed the data, PL, PV, BF, and LH participated in data interpretation, drafting, and revising the manuscript. NH, BB, BF, FV, and TB reviewed the manuscript. LH is the guarantor of the paper. All authors read and approved the final manuscript.

Competing interests

All authors had full access to all data (including statistical reports and tables) and take responsibility for the integrity of the data and the accuracy of the data analysis. All authors declare that they have no competing interests.

Received: 22 May 2011 Accepted: 18 October 2011

Published: 18 October 2011

References

- Alonso J, Angermeyer MC, Bernert S, Bruffaerts R, Brugha TS, Bryson H, de Girolamo G, Graaf R, Demyttenaere K, Gasquet I, Haro JM, Katz SJ, Kessler RC, Kovess V, Lépine JP, Ormel J, Polidori G, Russo LJ, Vilagut G, Almansa J, Arbabzadeh-Bouchez S, Autonell J, Bernal M, Buist-Bouwman MA, Codony M, Domingo-Salvany A, Ferrer M, Joo SS, Martínez-Alonso M, et al: 12-Month comorbidity patterns and associated factors in Europe: results from the European Study of the Epidemiology of Mental Disorders (ESEMeD) project. *Acta Psychiatr Scand Suppl* 2004, **420**:28-37.
- Serrano-Blanco A, Palao DJ, Luciano JV, Pinto-Meza A, Lujan L, Fernandez A, Roura P, Bertsch J, Mercader M, Haro JM: Prevalence of mental disorders in primary care: results from the diagnosis and treatment of mental disorders in primary care study (DASMAP). *Soc Psychiatry Psychiatr Epidemiol* 2010, **45**:201-210.
- Spitzer RL, Kroenke K, Williams JB: Validation and utility of a self-report version of PRIME-MD: the PHQ primary care study. *Primary Care Evaluation of Mental Disorders. Patient Health Questionnaire. JAMA* 1999, **282**:1737-1744.
- Ansseau M, Dierick M, Buntinx F, Cnockaert P, De Smedt J, Van Den Haute M, Vander Mijnsbrugge D: High prevalence of mental disorders in primary care. *J Affect Disord* 2004, **78**:49-55.
- Ansseau M, Fischler B, Dierick M, Mignon A, Leyman S: Prevalence and impact of generalized anxiety disorder and major depression in primary care in Belgium and Luxemburg: the GADIS study. *Eur Psychiatry* 2005, **20**:229-235.
- Norton J, De Roquefeuil G, Boulenger JP, Ritchie K, Mann A, Tylee A: Use of the PRIME-MD Patient Health Questionnaire for estimating the prevalence of psychiatric disorders in French primary care: comparison with family practitioner estimates and relationship to psychotropic medication use. *Gen Hosp Psychiatry* 2007, **29**:285-293.
- Mitchell AJ, Vaze A, Rao S: Clinical diagnosis of depression in primary care: a meta-analysis. *Lancet* 2009, **374**:609-619.
- Kroenke K, Jackson JL, Chamberlin J: Depressive and anxiety disorders in patients presenting with physical complaints: clinical predictors and outcome. *Am J Med* 1997, **103**:339-347.
- Haug TT, Mykletun A, Dahl AA: The association between anxiety, depression, and somatic symptoms in a large population: the HUNT-II study. *Psychosom Med* 2004, **66**:845-851.
- Simon GE, VonKorff M, Piccinelli M, Fullerton C, Ormel J: An international study of the relation between somatic symptoms and depression. *N Engl J Med* 1999, **341**:1329-1335.
- Kroenke K, Spitzer RL, Williams JB, Linzer M, Hahn SR, de Gruy FV, Brody D: Physical symptoms in primary care. Predictors of psychiatric disorders and functional impairment. *Arch Fam Med* 1994, **3**:774-779.
- Ohayon MM, Schatzberg AF: Using chronic pain to predict depressive morbidity in the general population. *Arch Gen Psychiatry* 2003, **60**:39-47.
- Simon GE, Goldberg SD, Tiemens BG, Ustun TB: Outcomes of recognized and unrecognized depression in an international primary care study. *Gen Hosp Psychiatry* 1999, **21**(2):97-105.
- Mitchell AJ, Coyne JC: Do ultra-short screening instruments accurately detect depression in primary care? A pooled analysis and meta-analysis of 22 studies. *Br J Gen Pract* 2007, **57**:144-151.
- Arroll B, Goodyear-Smith F, Kerse N, Fishman T, Gunn J: Effect of the addition of a "help" question to two screening questions on specificity for diagnosis of depression in general practice: diagnostic validity study. *BMJ* 2005, **331**:884.
- Goodyear-Smith F, Arroll B, Coupe N: Asking for help is helpful: validation of a brief lifestyle and mood assessment tool in primary health care. *Ann Fam Med* 2009, **7**:239-244.
- Haftgoli N, Favrat B, Verdon F, Vaucher P, Bischoff T, Burnand B, Herzig L: Patients presenting with somatic complaints in general practice: depression, anxiety and somatoform disorders are frequent and associated with psychosocial stressors. *BMC Fam Pract* 2010, **11**:67.
- Deployment Health Clinical Center: Full Patient Health Questionnaire (English). (<http://www.pdhealth.mil/guidelines/downloads/appendix2.pdf>).
- Kroenke K, Spitzer RL, Williams JB: The PHQ-9: validity of a brief depression severity measure. *J Gen Intern Med* 2001, **16**:606-613.
- Spitzer RL, Williams JB, Kroenke K, Linzer M, de Gruy FV, Hahn SR, Brody D, Johnson JG: Utility of a new procedure for diagnosing mental disorders in primary care. The PRIME-MD 1000 study. *JAMA* 1994, **272**:1749-1756.
- Wittkampf KA, Naeije L, Schene AH, Huyser J, van Weert HC: Diagnostic accuracy of the mood module of the Patient Health Questionnaire: a systematic review. *Gen Hosp Psychiatry* 2007, **29**:388-395.
- Wittkampf K, van Ravesteijn H, Baas K, van de Hoogen H, Schene A, Bindels P, Lucassen P, van de Lisdonk E, van Weert H: The accuracy of Patient Health Questionnaire-9 in detecting depression and measuring depression severity in high-risk groups in primary care. *Gen Hosp Psychiatry* 2009, **31**:451-459.
- Whooley MA, Avins AL, Miranda J, Browner WS: Case-finding instruments for depression. Two questions are as good as many. *J Gen Intern Med* 1997, **12**:439-445.
- Arroll B, Khin N, Kerse N: Screening for depression in primary care with two verbally asked questions: cross sectional study. *BMJ* 2003, **327**:1144-1146.
- Lowe B, Kroenke K, Grafe K: Detecting and monitoring depression with a two-item questionnaire (PHQ-2). *J Psychosom Res* 2005, **58**:163-171.
- Mohd-Sidik S, Arroll B, Goodyear-Smith F, Zain AM: Screening for depression with a brief questionnaire in a primary care setting: validation of the two questions with help question (Malay version). *Int J Psychiatry Med* 2011, **41**:143-154.
- Baker-Glenn EA, Park B, Granger L, Symonds P, Mitchell AJ: Desire for psychological support in cancer patients with depression or distress: validation of a simple help question. *Psychooncology* 2011, **20**:525-531.
- National Collaborating Centre for Mental Health: Nice clinical guidelines 90; Depression: the treatment and management of depression in adults

(partial update of NICE clinical guideline 23), [<http://www.nice.org.uk/CG90>].

29. Kroenke K: Depression screening is not enough. *Ann Intern Med* 2001, **134**:418-420.
30. Walters K, Buszewicz M, Weich S, King M: Help-seeking preferences for psychological distress in primary care: effect of current mental state. *Br J Gen Pract* 2008, **58**:694-698.
31. Dowrick C, Leydon GM, McBride A, Howe A, Burgess H, Clarke P, Maisey S, Kendrick T: Patients' and doctors' views on depression severity questionnaires incentivised in UK quality and outcomes framework: qualitative study. *BMJ* 2009, **338**:b663.
32. Kendrick T, Dowrick C, McBride A, Howe A, Clarke P, Maisey S, Moore M, Smith PW: Management of depression in UK general practice in relation to scores on depression severity questionnaires: analysis of medical record data. *BMJ* 2009, **338**:b750.

Pre-publication history

The pre-publication history for this paper can be accessed here:
<http://www.biomedcentral.com/1741-7015/9/114/prepub>

doi:10.1186/1741-7015-9-114

Cite this article as: Lombardo *et al.*: The 'help' question doesn't help when screening for major depression: external validation of the three-question screening test for primary care patients managed for physical complaints. *BMC Medicine* 2011 **9**:114.

**Submit your next manuscript to BioMed Central
and take full advantage of:**

- Convenient online submission
- Thorough peer review
- No space constraints or color figure charges
- Immediate publication on acceptance
- Inclusion in PubMed, CAS, Scopus and Google Scholar
- Research which is freely available for redistribution

Submit your manuscript at
www.biomedcentral.com/submit

